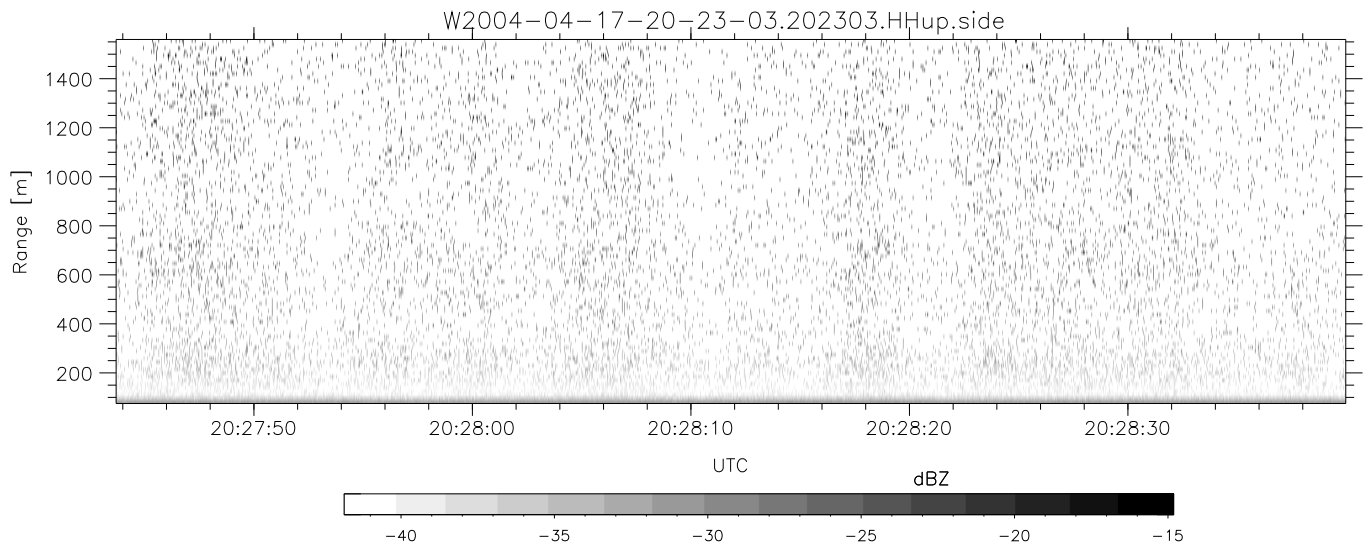
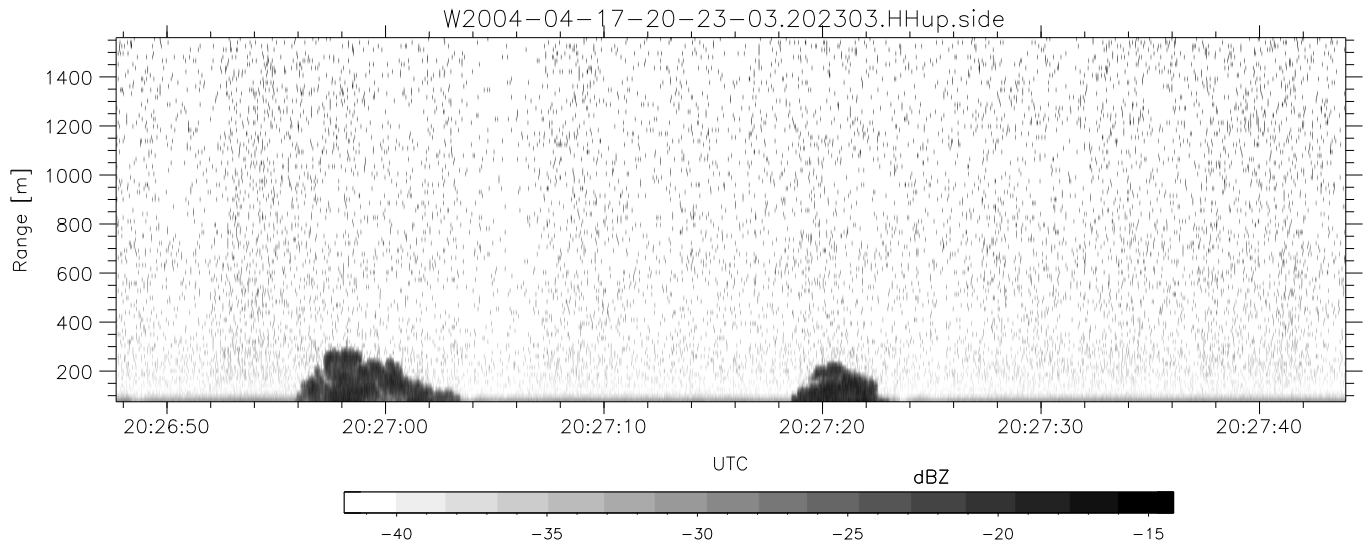
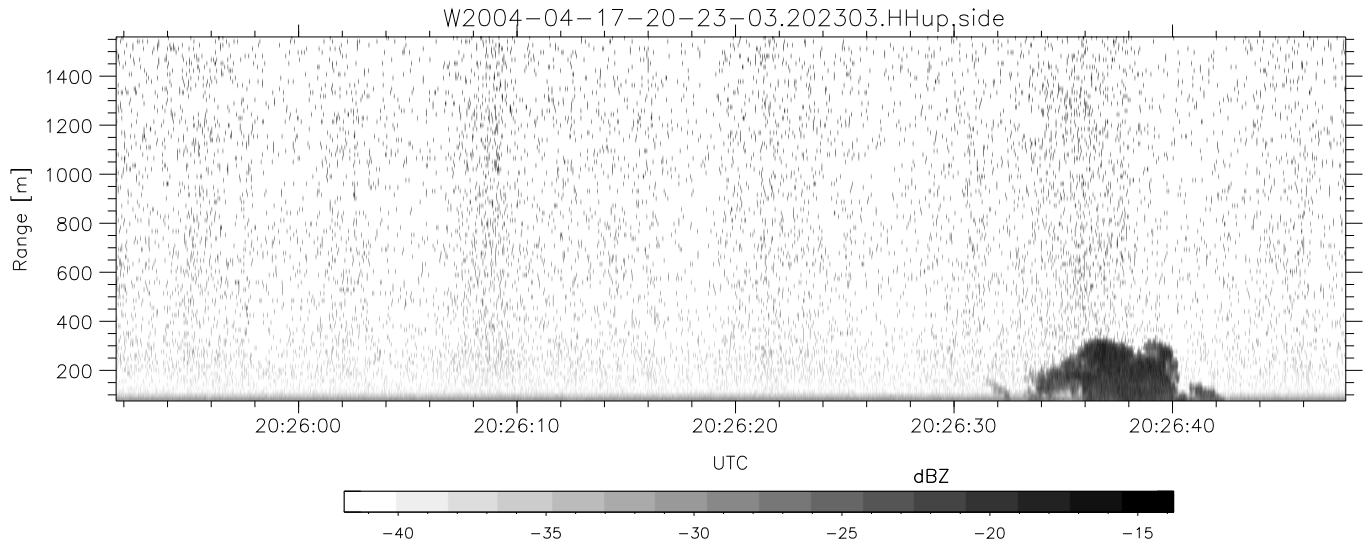


CIFEX 2004 Data (cal/250ns+2.5/100ns-3.5/500ns: 53.0,50.0)

W2004-04-17-20-23-03 - PPMAG4, IRIG:1/0/6  
 UTC: 20:23:03.61 to 20:53:46.90, Dur: 1843s  
 TimeLngth: 1843.32s, TimeInt: 28ms (35.4pps)  
 TimeCor=-13.0s, PPS(min,max,med): 35,36,35  
 Timeint/DSPdiff(mn,min,mx):28,28,28/28,28,28  
 Prof: 354 to 65700, NumProf(r/t): 17571/65346  
 ProcTime/Recs: 20:23:03-20:31:19/0-17570  
 ADacqtime: 25ms; DRate: 198.4KB/s; Flags: 0, 0, 0  
 Pulse: 275ns, IFilt: 5.0MHz; ppPol: HH HV VV  
 TxPol: HHV, PRF: 20 10 20 10 kHz, Noiseflg:2,2  
 Range: Delay 75m, Spacing 15m, Gates 100  
 Ave. Pulses: 84, Rng/Prof Aspect@90m/s: 5.9

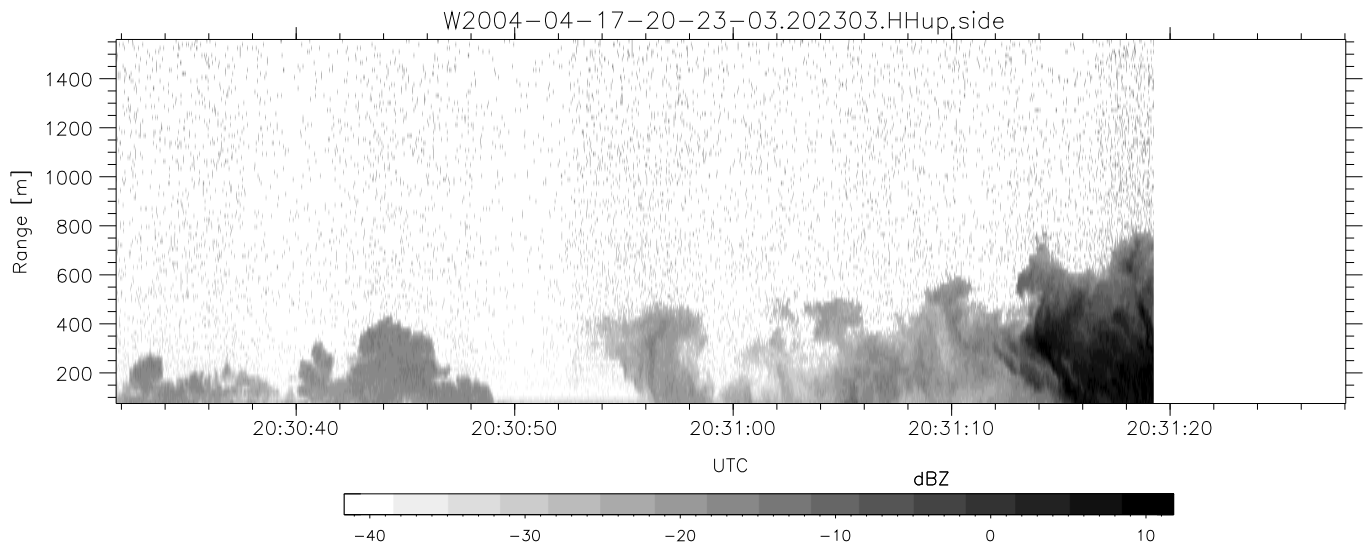
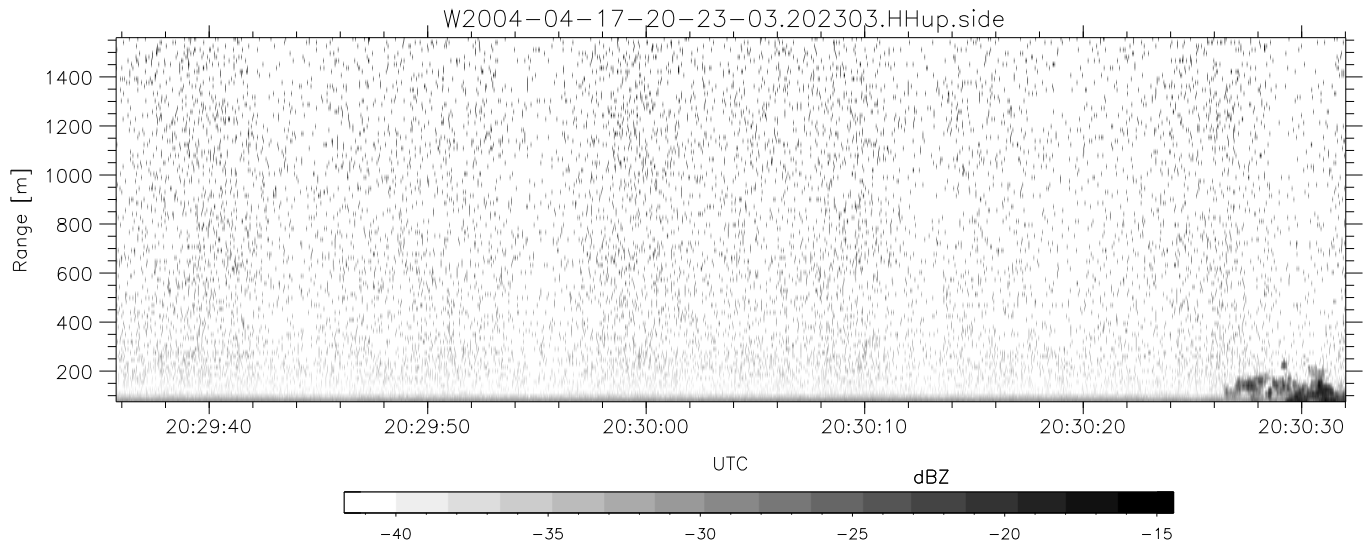
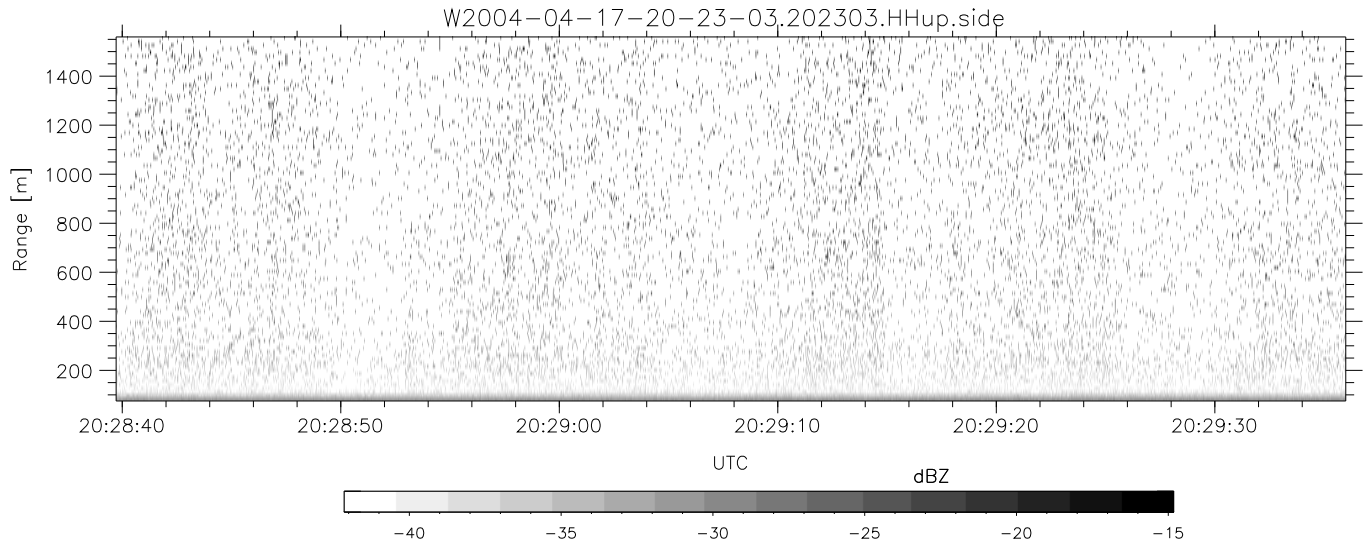
	Min	Max	Mean	Std	Varc%
hhN (dB)	-67.83	-64.57	-66.18	-76.20	10.0
vvN (dB)	-67.99	-64.71	-66.25	-76.24	10.0
hhL (dB)	-16.09	-2.28	-5.58	-12.16	22.0
vvL (dB)	-1.41	6.00	5.99	-9.47	2.8
ppN (m/s)	-12.49	12.59	-0.06	4.14	
ppT (m/s)	-98.69	99.45	-0.44	32.68	
hh/vv (dB)	NaN	46.07	13.14	28.25	3245
vh/hh (dB)	NaN	-29.23	-40.10	-38.34	149.
hv/vv (dB)	NaN	-35.39	-57.59	-46.75	1215
hn_jmp (dB)			-0.16		
vn_jmp (dB)			-0.16		



CIFEX 2004 Data (cal/250ns+2.5/100ns-3.5/500ns: 53.0,50.0)

W2004-04-17-20-23-03 - PPMAG4, IRIG:1/0/6  
 UTC: 20:23:03.61 to 20:53:46.90, Dur: 1843s  
 TimeLngth: 1843.32s, TimeInt: 28ms (35.4pps)  
 TimeCor=-13.0s, PPS(min,max,med): 35,36,35  
 Timeint/DSPdiff(mn,min,mx):28,28,28/28,28,28  
 Prof: 354 to 65700, NumProf(r/t): 17571/65346  
 ProcTime/Recs: 20:23:03-20:31:19/0-17570  
 ADacqtime: 25ms; DRate: 198.4KB/s; Flags: 0, 0, 0  
 Pulse: 275ns, IFfilt: 5.0MHz; ppPol: HH HV VV  
 TxPol: HHVV, PRF: 20 10 20 10 kHz, Noiseflg:2,2  
 Range: Delay 75m, Spacing 15m, Gates 100  
 Ave. Pulses: 84, Rng/Prof Aspect@90m/s: 5.9

	Min	Max	Mean	Std	Varc%
hhN(dB)	-67.83	-64.57	-66.18	-76.20	10.0
vvN(dB)	-67.99	-64.71	-66.25	-76.24	10.0
hhL(dB)	-16.09	-2.28	-5.58	-12.16	22.0
vvL(dB)	-1.41	6.00	5.99	-9.47	2.8
ppN(m/s)	-12.49	12.59	-0.06	4.14	
ppT(m/s)	-98.69	99.45	-0.44	32.68	
hh/vv(dB)	NaN	46.07	13.14	28.25	3245
vh/hh(dB)	NaN	-29.23	-40.10	-38.34	149.
hv/vv(dB)	NaN	-35.39	-57.59	-46.75	1215
hnjmp(dB)			-0.16		
vnjmp(dB)			-0.16		



CIFEX 2004 Data (cal/250ns+2.5/100ns-3.5/500ns: 53.0,50.0)

W2004-04-17-20-23-03 - PPMAG4, IRIG:1/0/6  
 UTC: 20:23:03.61 to 20:53:46.90, Dur: 1843s  
 TimeLngth: 1843.32s, TimeInt: 28ms (35.4pps)  
 TimeCor=-13.0s, PPS(min,max,med): 35,36,35  
 Timeint/DSPdiff(mn,min,mx):28,28,28/28,28,28  
 Prof: 354 to 65700, NumProf(r/t): 17571/65346  
 ProcTime/Recs: 20:23:03-20:31:19/0-17570  
 ADacqtime: 25ms; DRate: 198.4KB/s; Flags: 0, 0, 0  
 Pulse: 275ns, IFfilt: 5.0MHz; ppPol: HH HV VV  
 TxPol: HHVV, PRF: 20 10 20 10 kHz, Noiseflg:2,2  
 Range: Delay 75m, Spacing 15m, Gates 100  
 Ave. Pulses: 84, Rng/Prof Aspect@90m/s: 5.9

	Min	Max	Mean	Std	Varc%
hhN (dB)	-67.83	-64.57	-66.18	-76.20	10.0
vvN (dB)	-67.99	-64.71	-66.25	-76.24	10.0
hhL (dB)	-16.09	-2.28	-5.58	-12.16	22.0
vvL (dB)	-1.41	6.00	5.99	-9.47	2.8
ppN (m/s)	-12.49	12.59	-0.06	4.14	
ppT (m/s)	-98.69	99.45	-0.44	32.68	
hh/vv (dB)	NaN	46.07	13.14	28.25	3245
vh/hh (dB)	NaN	-29.23	-40.10	-38.34	149.
hv/vv (dB)	NaN	-35.39	-57.59	-46.75	1215
hnjmp (dB)			-0.16		
vnjmp (dB)			-0.16		