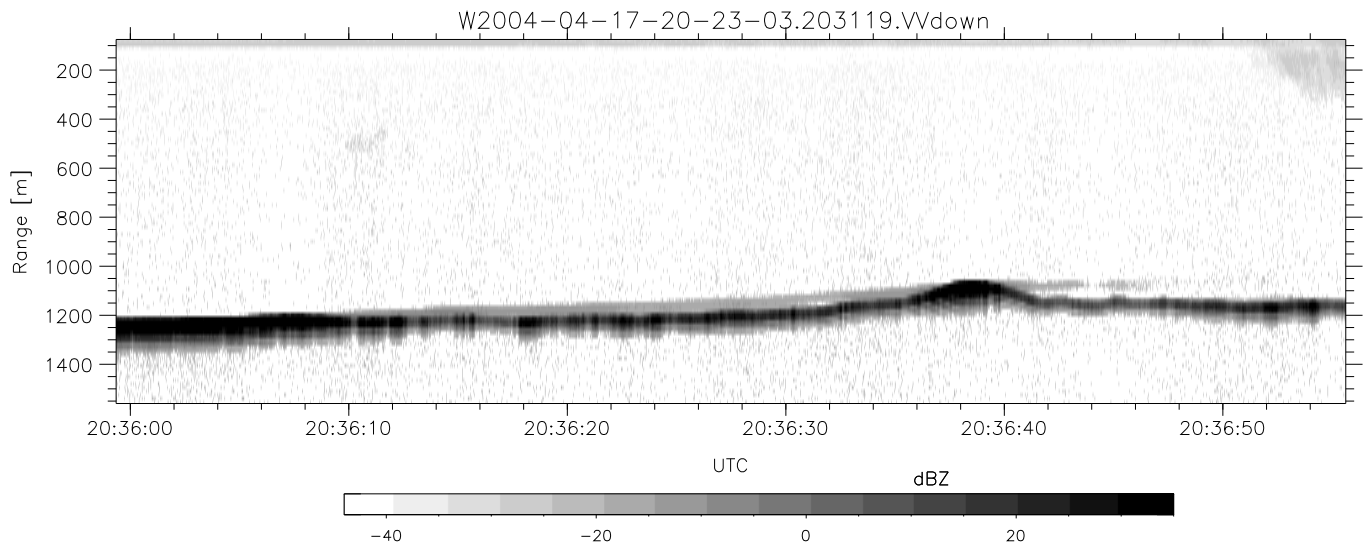
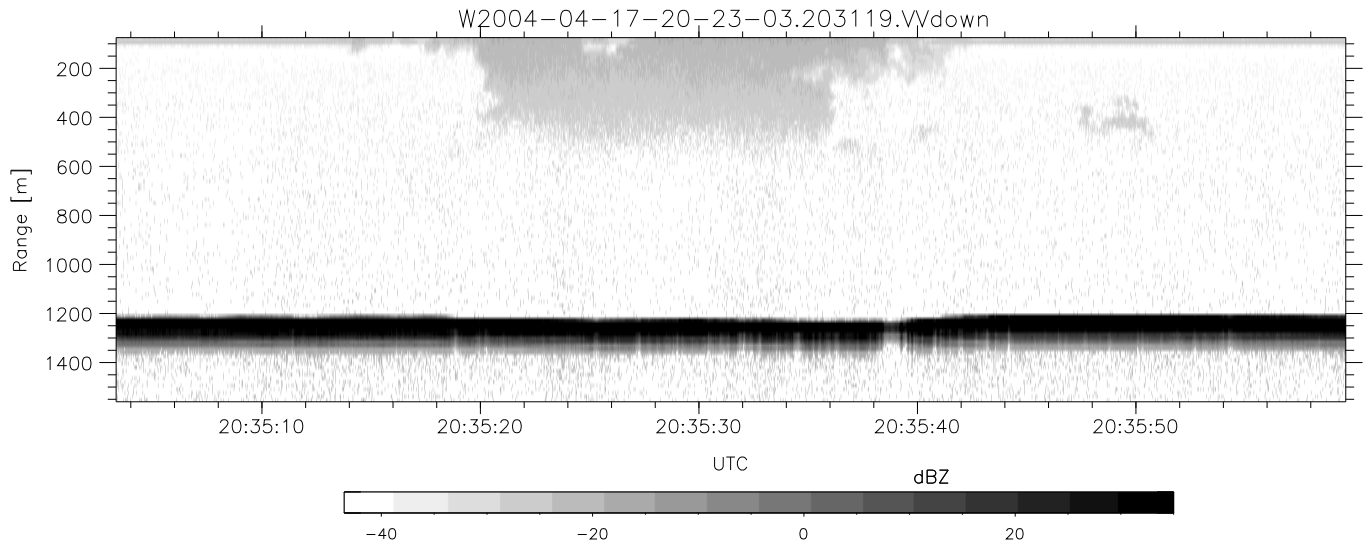
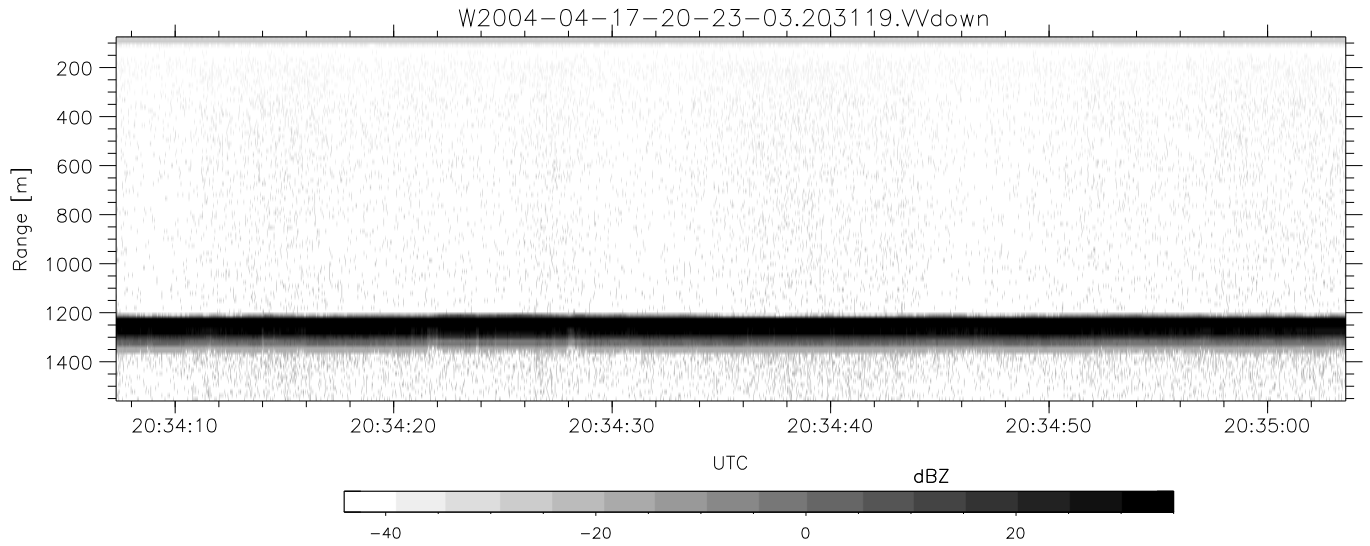


CIFEX 2004 Data (cal/250ns+2.5/100ns-3.5/500ns: 53.0,50.0)

W2004-04-17-20-23-03 - PPMAG4, IRIG:1/0/6
 UTC: 20:23:03.61 to 20:53:46.90, Dur: 1843s
 TimeLngth: 1843.32s, TimeInt: 28ms (35.4pps)
 TimeCor=-13.0s, PPS(min,max,med): 35,36,35
 Timeint/DSPdiff(mn,min,mx):28,28,31/28,28,29
 Prof: 354 to 65700, NumProf(r/t): 17571/65346
 ProcTime/Recs: 20:31:19-20:39:34/17571-35141
 ADacqtime: 25ms; DRate: 198.4KB/s; Flags: 0, 0, 0
 Pulse: 275ns, IFfilt: 5.0MHz; ppPol: HH HV VV
 TxPol: HHVV, PRF: 20 10 20 10 kHz, Noiseflg:4,2
 Range: Delay 75m, Spacing 15m, Gates 100
 Ave. Pulses: 84, Rng/Prof Aspect@90m/s: 5.9

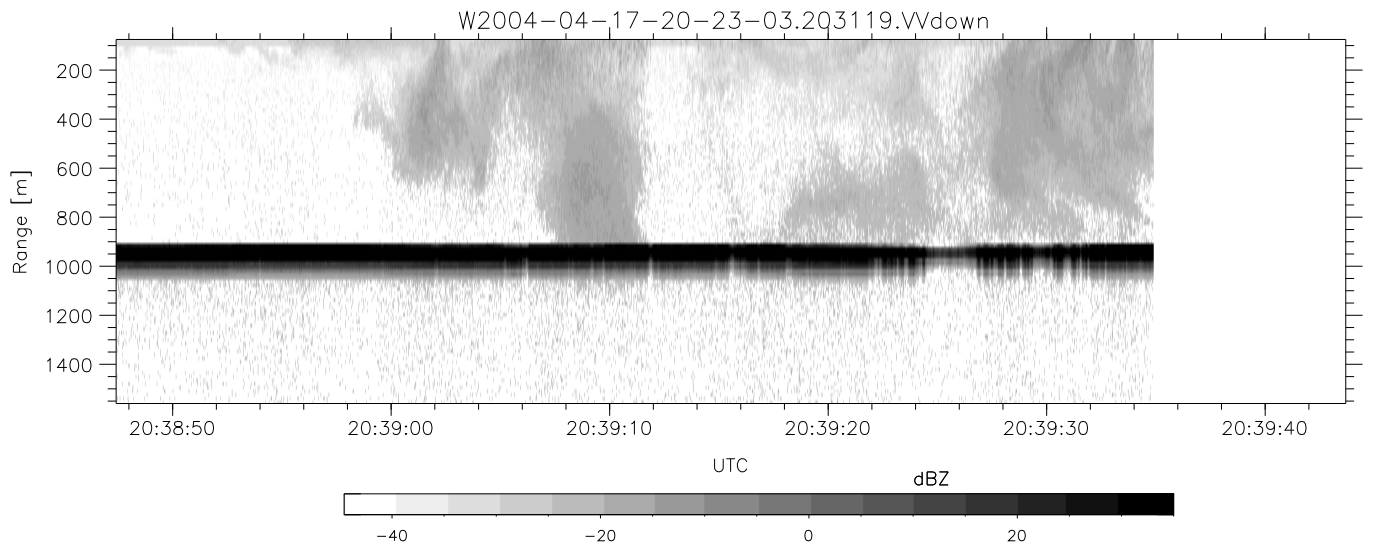
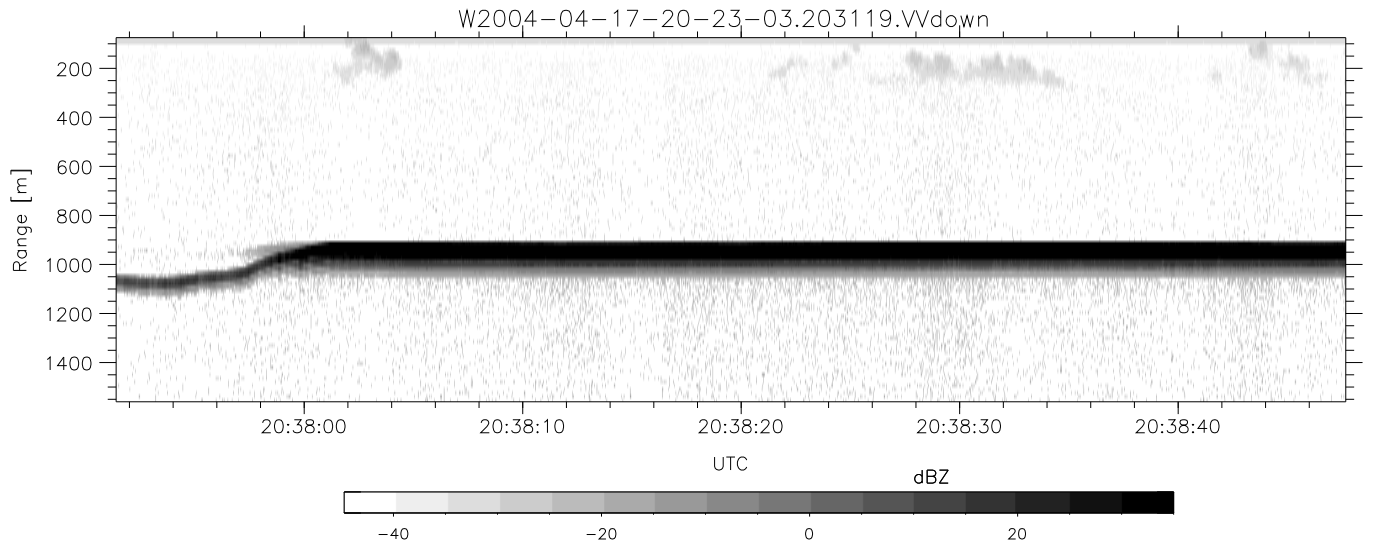
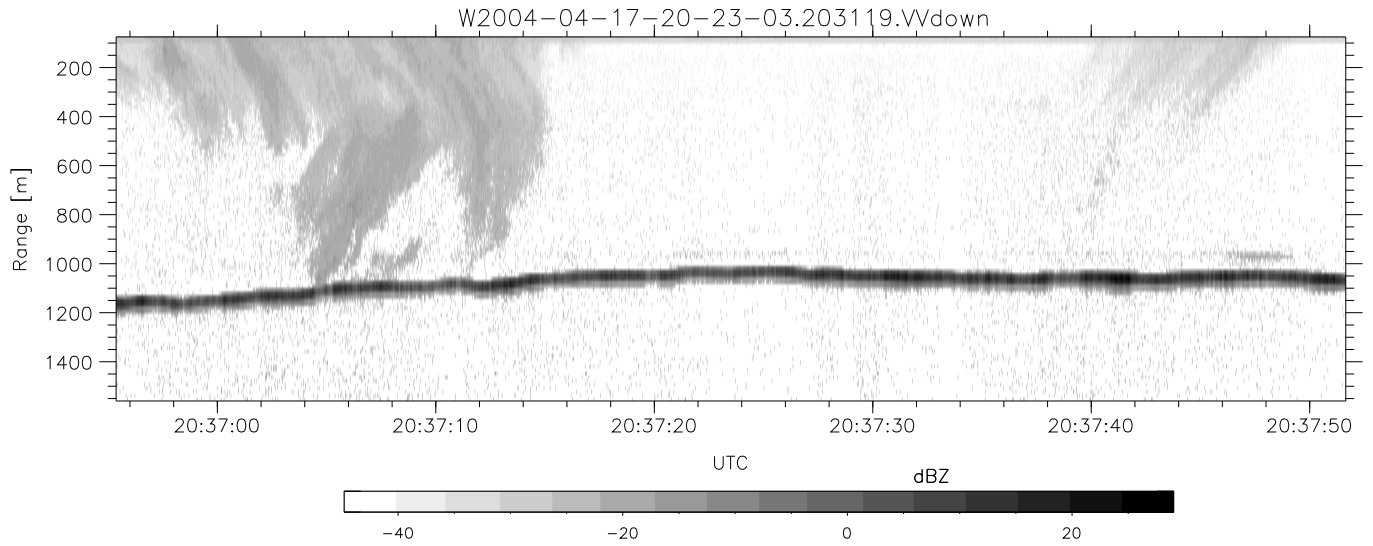
	Min	Max	Mean	Std	Varc%
hhN (dB)	-68.22	-64.44	-66.18	-76.18	10.0
vvN (dB)	-68.02	-64.57	-66.23	-76.12	10.2
hhL (dB)	-12.99	1.34	-2.33	-4.55	60.0
vvL (dB)	-9.54	6.00	5.07	0.35	33.7
ppN (m/s)	-12.98	12.82	-0.03	4.16	
ppT (m/s)	-102.5	101.29	-0.22	32.87	
hh/vv (dB)	NaN	69.57	20.00	44.65	2916
vh/hh (dB)	NaN	-24.64	-37.11	-36.73	109.
hv/vv (dB)	NaN	-32.34	-50.46	-44.85	364.
hnjmp (dB)			0.16		
vnjmp (dB)			0.17		



CIFEX 2004 Data (cal/250ns+2.5/100ns-3.5/500ns: 53.0,50.0)

W2004-04-17-20-23-03 - PPMAG4, IRIG:1/0/6
 UTC: 20:23:03.61 to 20:53:46.90, Dur: 1843s
 TimeLngth: 1843.32s, TimeInt: 28ms (35.4pps)
 TimeCor=-13.0s, PPS(min,max,med): 35,36,35
 Timeint/DSPdiff(mn,min,mx):28,28,31/28,28,29
 Prof: 354 to 65700, NumProf(r/t): 17571/65346
 ProcTime/Recs: 20:31:19-20:39:34/17571-35141
 ADacqtime: 25ms; DRate: 198.4KB/s; Flags: 0, 0, 0
 Pulse: 275ns, IFfilt: 5.0MHz; ppPol: HH HV VV
 TxPol: HHVV, PRF: 20 10 20 10 kHz, Noiseflg:4,2
 Range: Delay 75m, Spacing 15m, Gates 100
 Ave. Pulses: 84, Rng/Prof Aspect@90m/s: 5.9

	Min	Max	Mean	Std	Varc%
hhN (dB)	-68.22	-64.44	-66.18	-76.18	10.0
vvN (dB)	-68.02	-64.57	-66.23	-76.12	10.2
hhL (dB)	-12.99	1.34	-2.33	-4.55	60.0
vvL (dB)	-9.54	6.00	5.07	0.35	33.7
ppN (m/s)	-12.98	12.82	-0.03	4.16	
ppT (m/s)	-102.5	101.29	-0.22	32.87	
hh/vv (dB)	NaN	69.57	20.00	44.65	2916
vh/hh (dB)	NaN	-24.64	-37.11	-36.73	109.
hv/vv (dB)	NaN	-32.34	-50.46	-44.85	364.
hnjmp (dB)			0.16		
vnjmp (dB)			0.17		



CIFEX 2004 Data (cal/250ns+2.5/100ns-3.5/500ns: 53.0,50.0)

W2004-04-17-20-23-03 - PPMAG4, IRIG:1/0/6
 UTC: 20:23:03.61 to 20:53:46.90, Dur: 1843s
 TimeLngth: 1843.32s, TimeInt: 28ms (35.4pps)
 TimeCor=-13.0s, PPS(min,max,med): 35,36,35
 Timeint/DSPdiff(mn,min,mx):28,28,31/28,28,29
 Prof: 354 to 65700, NumProf(r/t): 17571/65346
 ProcTime/Recs: 20:31:19-20:39:34/17571-35141
 ADacqtime: 25ms; DRate: 198.4KB/s; Flags: 0, 0, 0
 Pulse: 275ns, IFfilt: 5.0MHz; ppPol: HH HV VV
 TxPol: HHVV, PRF: 20 10 20 10 kHz, Noiseflg:4,2
 Range: Delay 75m, Spacing 15m, Gates 100
 Ave. Pulses: 84, Rng/Prof Aspect@90m/s: 5.9

	Min	Max	Mean	Std	Varc%
hhN(dB)	-68.22	-64.44	-66.18	-76.18	10.0
vvN(dB)	-68.02	-64.57	-66.23	-76.12	10.2
hhL(dB)	-12.99	1.34	-2.33	-4.55	60.0
vvL(dB)	-9.54	6.00	5.07	0.35	33.7
ppN(m/s)	-12.98	12.82	-0.03	4.16	
ppT(m/s)	-102.5	101.29	-0.22	32.87	
hh/vv(dB)	NaN	69.57	20.00	44.65	2916
vh/hh(dB)	NaN	-24.64	-37.11	-36.73	109.
hv/vv(dB)	NaN	-32.34	-50.46	-44.85	364.
hnjmp(dB)				0.16	
vnjmp(dB)				0.17	