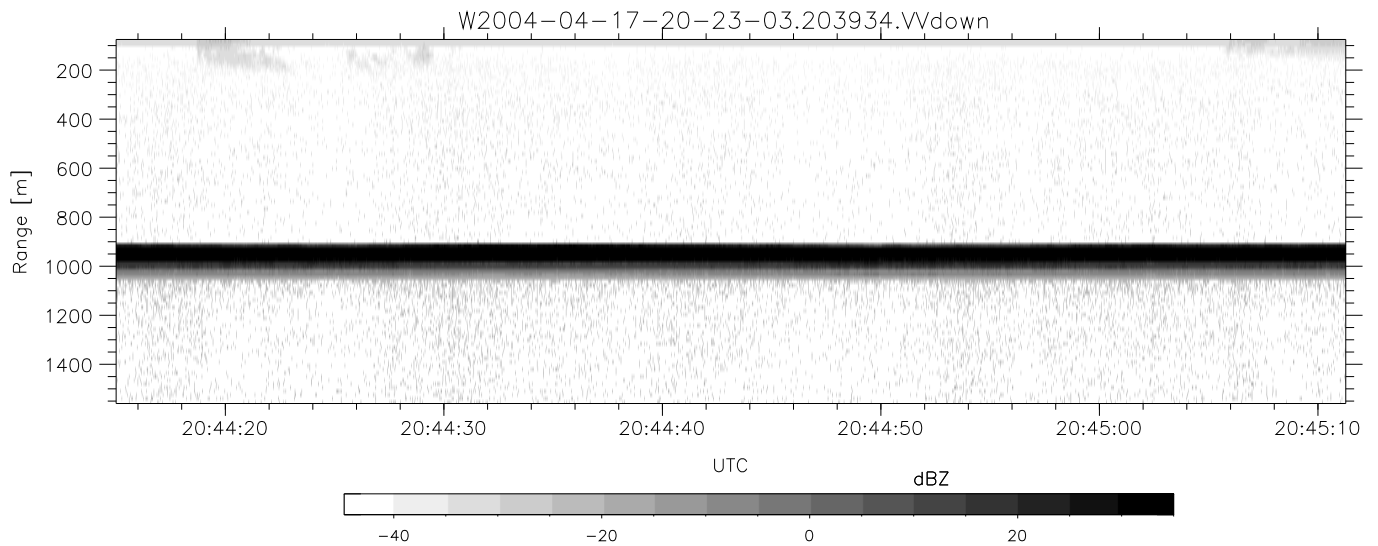
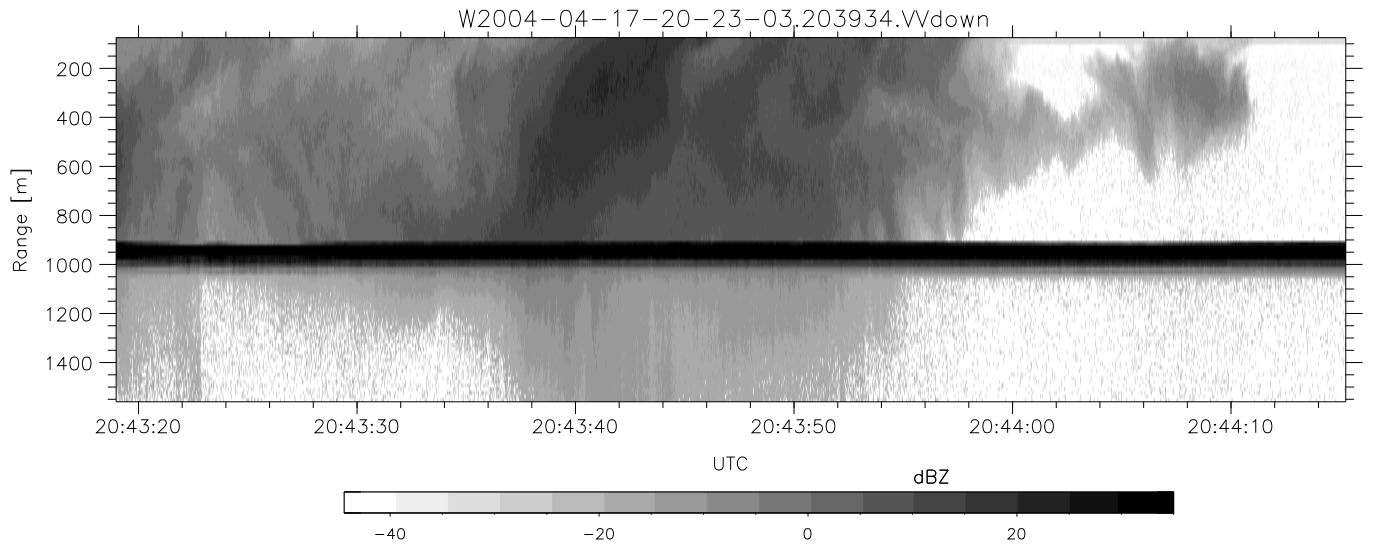
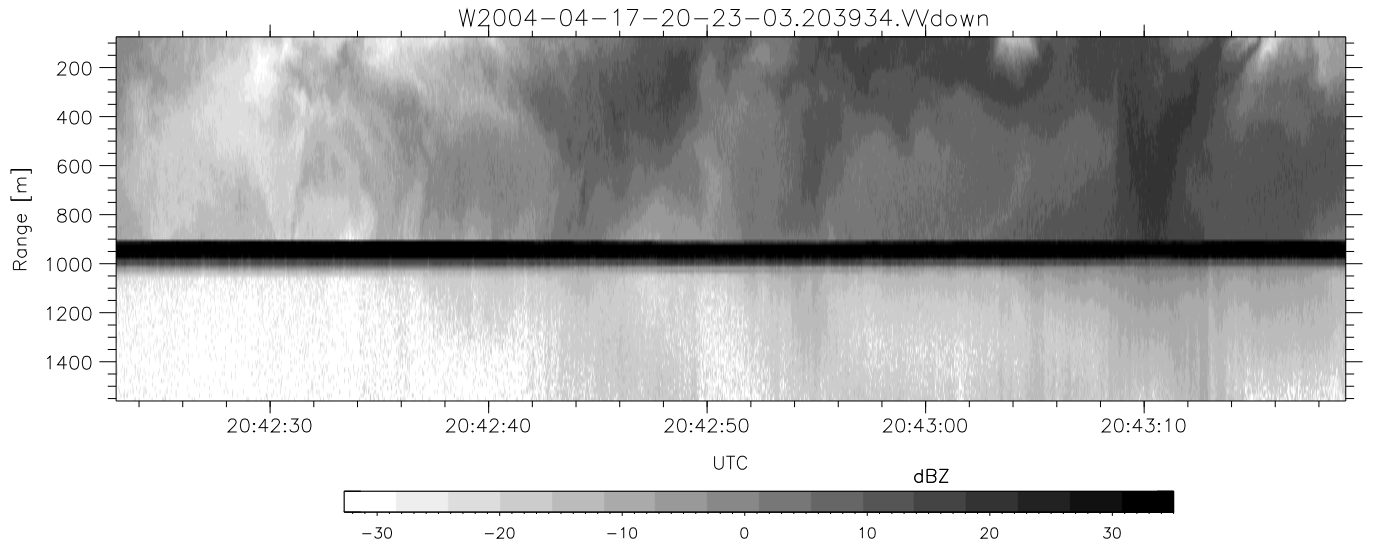


CIFEX 2004 Data (cal/250ns+2.5/100ns-3.5/500ns: 53.0,50.0)

W2004-04-17-20-23-03 - PPMAG4, IRIG:1/0/6
 UTC: 20:23:03.61 to 20:53:46.90, Dur: 1843s
 TimeLngth: 1843.32s, TimeInt: 28ms (35.4pps)
 TimeCor=-13.0s, PPS(min,max,med): 35,36,35
 Timeint/DSPdiff(mn,min,mx):28,28,28/28,28,28
 Prof: 354 to 65700, NumProf(r/t): 17571/65346
 ProcTime/Recs: 20:39:34-20:47:50/35142-52712
 ADacqtime: 25ms; DRate: 198.4KB/s; Flags: 0, 0, 0
 Pulse: 275ns, IFfilt: 5.0MHz; ppPol: HH HV VV
 TxPol: HHVV, PRF: 20 10 20 10 kHz, NoiseFlg:4,3
 Range: Delay 75m, Spacing 15m, Gates 100
 Ave. Pulses: 84, Rng/Prof Aspect@90m/s: 5.9

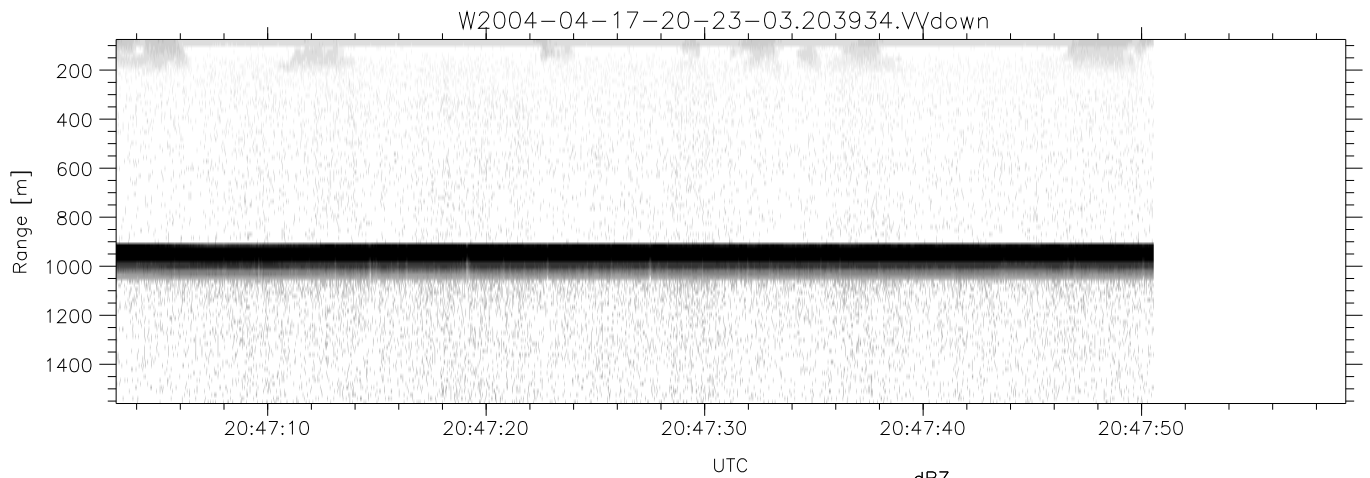
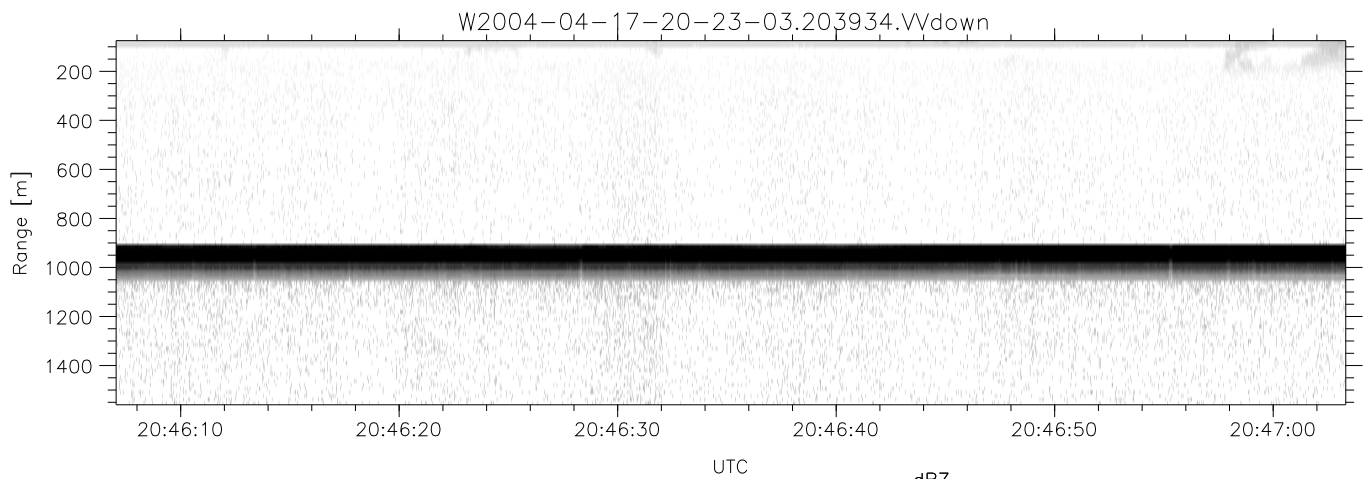
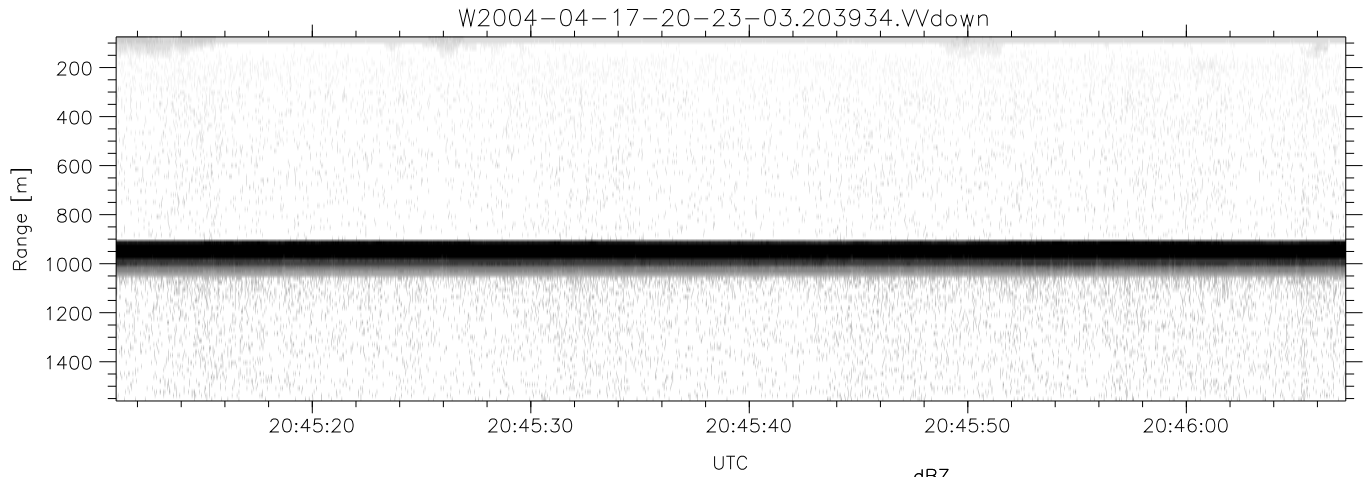
	Min	Max	Mean	Std	Varc%
hhN(dB)	-67.97	-64.68	-66.20	-76.23	9.9
vvN(dB)	-67.97	-64.74	-66.25	-76.18	10.1
hhL(dB)	-1.52	1.34	0.14	-10.24	9.2
vvL(dB)	-0.83	5.25	1.75	-6.09	16.4
ppN(m/s)	-12.80	12.25	-0.02	4.17	
ppT(m/s)	-101.1	96.77	-0.16	32.92	
hh/vv(dB)	NaN	64.08	16.41	39.10	1858
vh/hh(dB)	NaN	-2.96	-35.64	-23.80	1526
hv/vv(dB)	NaN	-30.60	-50.64	-44.17	444.
hnjmp(dB)			-0.15		
vnjmp(dB)			-0.17		



CIFEX 2004 Data (cal/250ns+2.5/100ns-3.5/500ns: 53.0,50.0)

W2004-04-17-20-23-03 - PPMAG4, IRIG:1/0/6
 UTC: 20:23:03.61 to 20:53:46.90, Dur: 1843s
 TimeLngth: 1843.32s, TimeInt: 28ms (35.4pps)
 TimeCor=-13.0s, PPS(min,max,med): 35,36,35
 Timeint/DSPdiff(mn,min,mx):28,28,28/28,28,28
 Prof: 354 to 65700, NumProf(r/t): 17571/65346
 ProcTime/Recs: 20:39:34-20:47:50/35142-52712
 ADacqtime: 25ms; DRate: 198.4KB/s; Flags: 0, 0, 0
 Pulse: 275ns, IFilt: 5.0MHz; ppPol: HH HV VV
 TxPol: HHVV, PRF: 20 10 20 10 kHz, NoiseFlg:4,3
 Range: Delay 75m, Spacing 15m, Gates 100
 Ave. Pulses: 84, Rng/Prof Aspect@90m/s: 5.9

	Min	Max	Mean	Std	Varc%
hhN(dB)	-67.97	-64.68	-66.20	-76.23	9.9
vvN(dB)	-67.97	-64.74	-66.25	-76.18	10.1
hhL(dB)	-1.52	1.34	0.14	-10.24	9.2
vvL(dB)	-0.83	5.25	1.75	-6.09	16.4
ppN(m/s)	-12.80	12.25	-0.02	4.17	
ppT(m/s)	-101.1	96.77	-0.16	32.92	
hh/vv(dB)	NaN	64.08	16.41	39.10	1858
vh/hh(dB)	NaN	-2.96	-35.64	-23.80	1526
hv/vv(dB)	NaN	-30.60	-50.64	-44.17	444.
hnjmp(dB)			-0.15		
vnjmp(dB)			-0.17		



CIFEX 2004 Data (cal/250ns+2.5/100ns-3.5/500ns: 53.0,50.0)

W2004-04-17-20-23-03 - PPMAG4, IRIG:1/0/6
 UTC: 20:23:03.61 to 20:53:46.90, Dur: 1843s
 TimeLngth: 1843.32s, TimeInt: 28ms (35.4pps)
 TimeCor=-13.0s, PPS(min,max,med): 35,36,35
 Timeint/DSPdiff(mn,min,mx):28,28,28/28,28,28
 Prof: 354 to 65700, NumProf(r/t): 17571/65346
 ProcTime/Recs: 20:39:34-20:47:50/35142-52712
 ADacqtime: 25ms; DRate: 198.4KB/s; Flags: 0, 0, 0
 Pulse: 275ns, IFilt: 5.0MHz; ppPol: HH HV VV
 TxPol: HHVV, PRF: 20 10 20 10 kHz, NoiseFlg:4,3
 Range: Delay 75m, Spacing 15m, Gates 100
 Ave. Pulses: 84, Rng/Prof Aspect@90m/s: 5.9

	Min	Max	Mean	Std	Varc%
hhN (dB)	-67.97	-64.68	-66.20	-76.23	9.9
vvN (dB)	-67.97	-64.74	-66.25	-76.18	10.1
hhL (dB)	-1.52	1.34	0.14	-10.24	9.2
vvL (dB)	-0.83	5.25	1.75	-6.09	16.4
ppN (m/s)	-12.80	12.25	-0.02	4.17	
ppT (m/s)	-101.1	96.77	-0.16	32.92	
hh/vv (dB)	NaN	64.08	16.41	39.10	1858
vh/hh (dB)	NaN	-2.96	-35.64	-23.80	1526
hv/vv (dB)	NaN	-30.60	-50.64	-44.17	444.
hn_jmp (dB)			-0.15		
vn_jmp (dB)			-0.17		