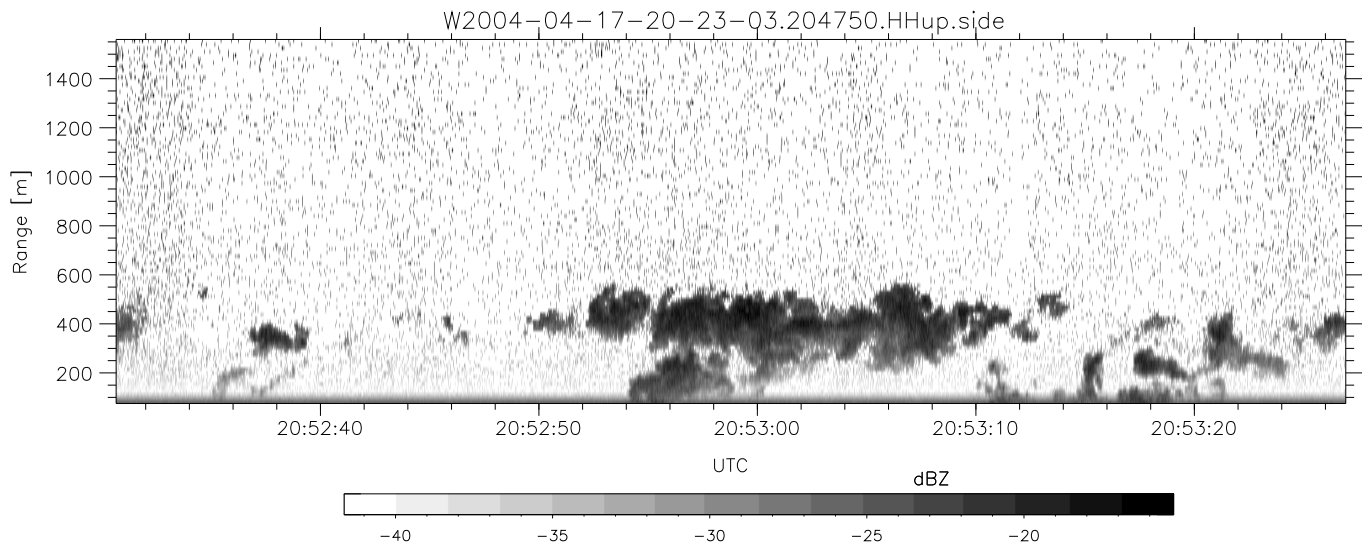
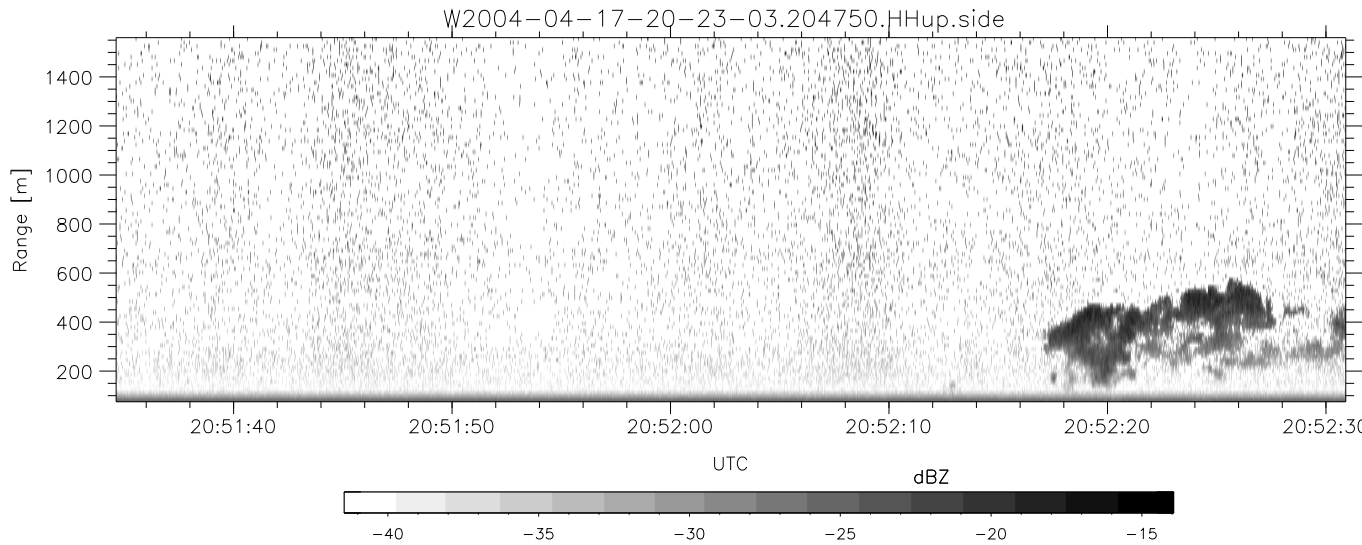
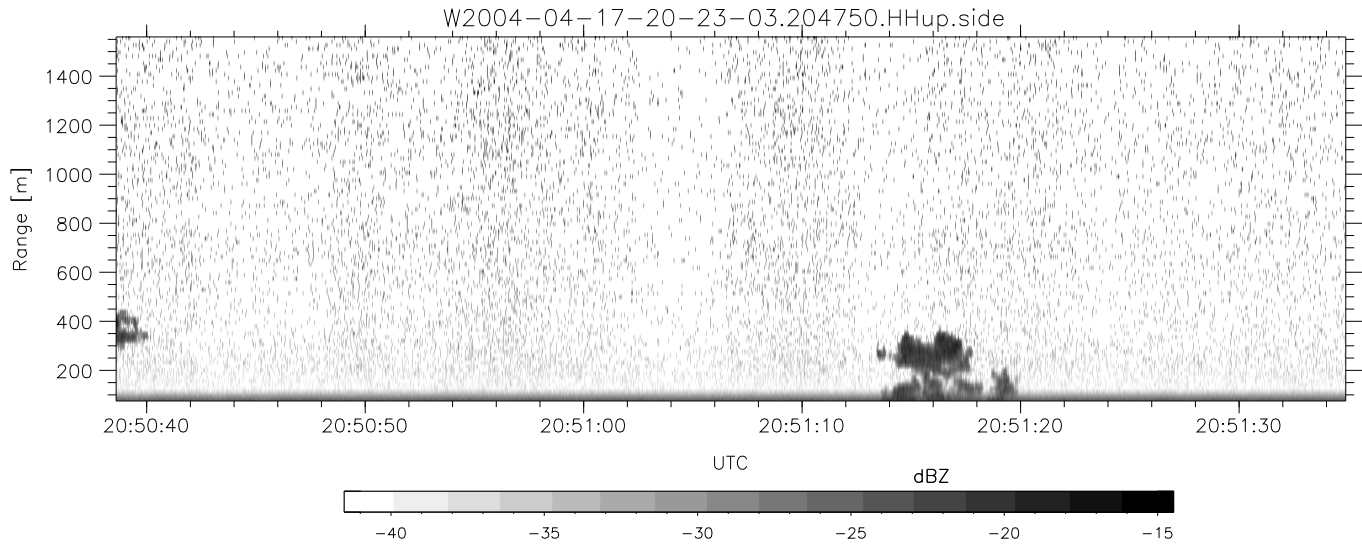


CIFEX 2004 Data (cal/250ns+2.5/100ns-3.5/500ns: 53.0,50.0)

W2004-04-17-20-23-03 - PPMAG4, IRIG:1/0/6
 UTC: 20:23:03.61 to 20:53:46.90, Dur: 1843s
 TimeLngth: 1843.32s, TimeInt: 28ms (35.4pps)
 TimeCor=-13.0s, PPS(min,max,med): 35,36,35
 Timeint/DSPdiff(mn,min,mx):28,28,28/28,28,28
 Prof: 354 to 65700, NumProf(r/t): 12633/65346
 ProcTime/Recs: 20:47:50-20:53:46/52713-65345
 ADacqtime: 25ms; DRate: 198.4KB/s; Flags: 0, 0, 0
 Pulse: 275ns, IFilt: 5.0MHz; ppPol: HH HV VV
 TxPol: HHVV, PRF: 20 10 20 10 kHz, NoiseFlg:2,2
 Range: Delay 75m, Spacing 15m, Gates 100
 Ave. Pulses: 84, Rng/Prof Aspect@90m/s: 5.9

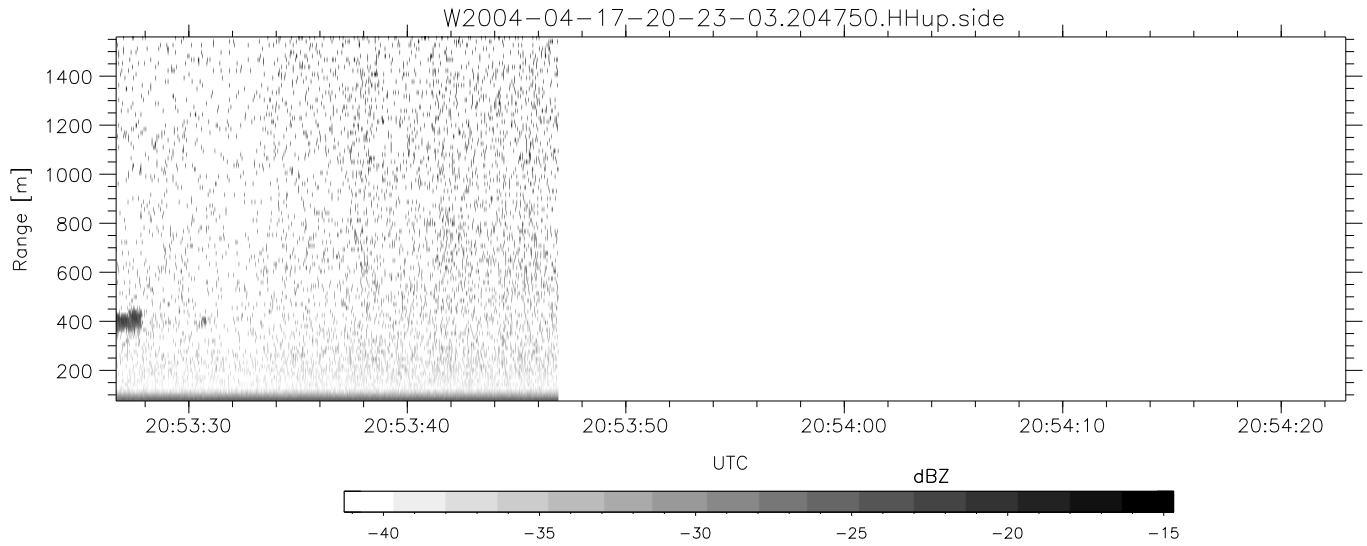
	Min	Max	Mean	Std	Varc%
hhN (dB)	-67.99	-64.71	-66.25	-76.31	9.9
vvN (dB)	-68.15	-64.40	-66.30	-76.21	10.2
hhL (dB)	-1.63	1.15	-0.34	-10.52	9.6
vvL (dB)	-0.68	5.41	2.37	-5.17	17.6
ppN (m/s)	-12.00	12.57	-0.03	4.17	
ppT (m/s)	-94.78	99.34	-0.25	32.96	
hh/vv (dB)	NaN	34.66	14.32	28.62	2693
vh/hh (dB)	-99	-99	-99	-99	-99
hv/vv (dB)	NaN	-35.12	-58.33	-45.81	1785
hn_jmp (dB)				0.16	
vn_jmp (dB)				0.17	



CIFEX 2004 Data (cal/250ns+2.5/100ns-3.5/500ns: 53.0,50.0)

W2004-04-17-20-23-03 - PPMAG4, IRIG:1/0/6
 UTC: 20:23:03.61 to 20:53:46.90, Dur: 1843s
 TimeLngth: 1843.32s, TimeInt: 28ms (35.4pps)
 TimeCor=-13.0s, PPS(min,max,med): 35,36,35
 Timeint/DSPdiff(mn,min,mx):28,28,28/28,28,28
 Prof: 354 to 65700, NumProf(r/t): 12633/65346
 ProcTime/Recs: 20:47:50-20:53:46/52713-65345
 ADacqtime: 25ms; DRate: 198.4KB/s; Flags: 0, 0, 0
 Pulse: 275ns, IFilt: 5.0MHz; ppPol: HH HV VV
 TxPol: HHVV, PRF: 20 10 20 10 kHz, NoiseFlg:2,2
 Range: Delay 75m, Spacing 15m, Gates 100
 Ave. Pulses: 84, Rng/Prof Aspect@90m/s: 5.9

	Min	Max	Mean	Std	Varc%
hhN (dB)	-67.99	-64.71	-66.25	-76.31	9.9
vvN (dB)	-68.15	-64.40	-66.30	-76.21	10.2
hhL (dB)	-1.63	1.15	-0.34	-10.52	9.6
vvL (dB)	-0.68	5.41	2.37	-5.17	17.6
ppN (m/s)	-12.00	12.57	-0.03	4.17	
ppT (m/s)	-94.78	99.34	-0.25	32.96	
hh/vv (dB)	NaN	34.66	14.32	28.62	2693
vh/hh (dB)	-99	-99	-99	-99	-99
hv/vv (dB)	NaN	-35.12	-58.33	-45.81	1785
hn_jmp (dB)			0.16		
vn_jmp (dB)			0.17		



CIFEX 2004 Data (cal/250ns+2.5/100ns-3.5/500ns: 53.0,50.0)

W2004-04-17-20-23-03 - PPMAG4, IRIG:1/0/6
 UTC: 20:23:03.61 to 20:53:46.90, Dur: 1843s
 TimeLngth: 1843.32s, TimeInt: 28ms (35.4pps)
 TimeCor=-13.0s, PPS(min,max,med): 35,36,35
 Timeint/DSPdiff(mn,min,mx):28,28,28/28,28,28
 Prof: 354 to 65700, NumProf(r/t): 12633/65346
 ProcTime/Recs: 20:47:50-20:53:46/52713-65345
 ADacqtime: 25ms; DRate: 198.4KB/s; Flags: 0, 0, 0
 Pulse: 275ns, IFilt: 5.0MHz; ppPol: HH HV VV
 TxPol: HHVV, PRF: 20 10 20 10 kHz, NoiseFlg:2,2
 Range: Delay 75m, Spacing 15m, Gates 100
 Ave. Pulses: 84, Rng/Prof Aspect@90m/s: 5.9

	Min	Max	Mean	Std	Varc%
hhN(dB)	-67.99	-64.71	-66.25	-76.31	9.9
vvN(dB)	-68.15	-64.40	-66.30	-76.21	10.2
hhL(dB)	-1.63	1.15	-0.34	-10.52	9.6
vvL(dB)	-0.68	5.41	2.37	-5.17	17.6
ppN(m/s)	-12.00	12.57	-0.03	4.17	
ppT(m/s)	-94.78	99.34	-0.25	32.96	
hh/vv(dB)	NaN	34.66	14.32	28.62	2693
vh/hh(dB)	-99	-99	-99	-99	-99
hv/vv(dB)	NaN	-35.12	-58.33	-45.81	1785
hnjmp(dB)			0.16		
vnjmp(dB)			0.17		