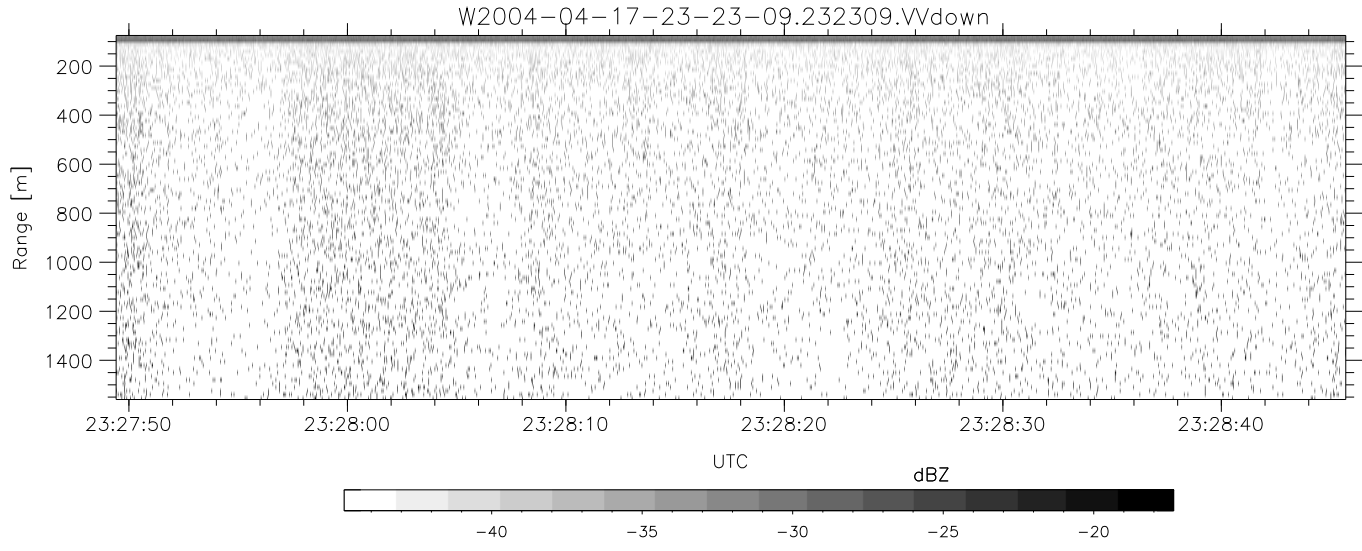
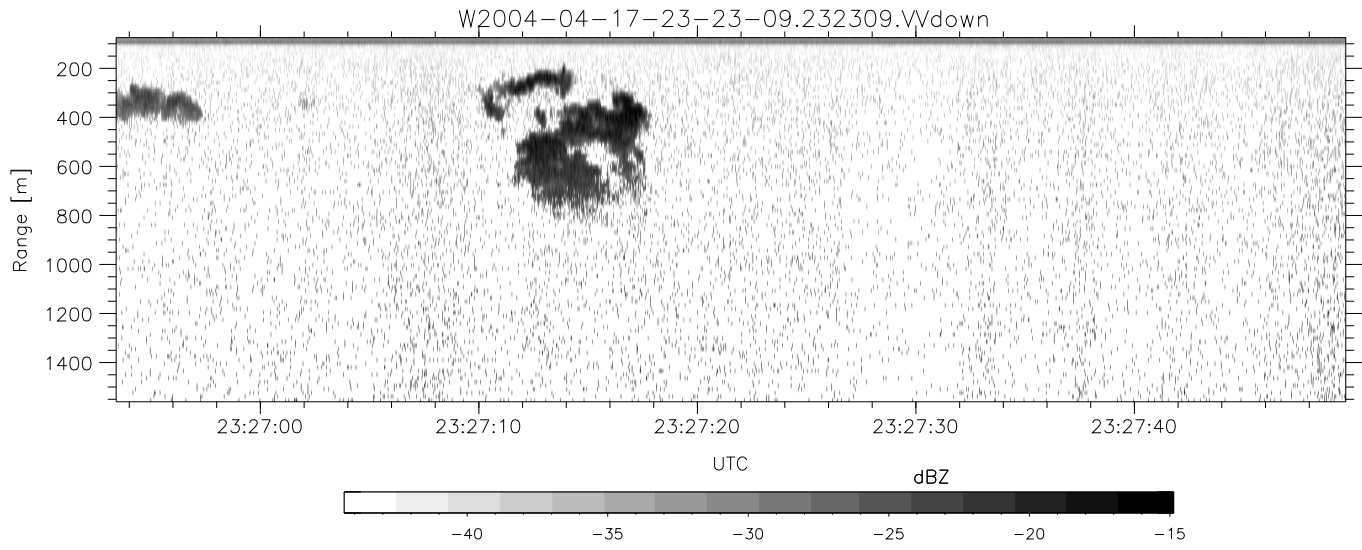
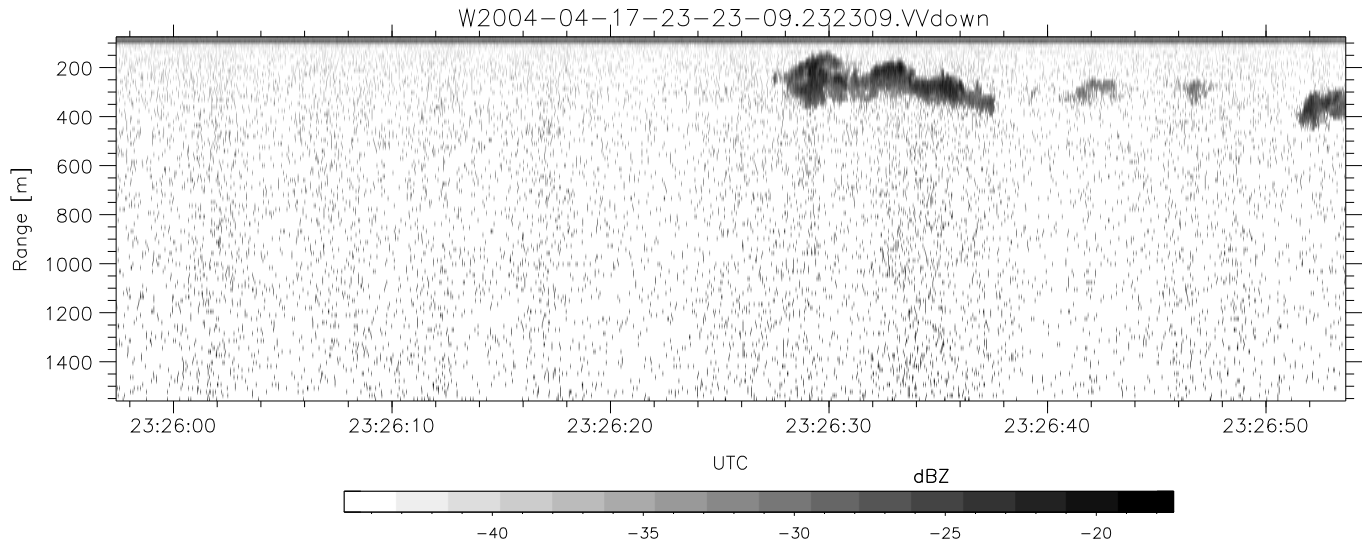


CIFEX 2004 Data (cal/250ns+2.5/100ns-3.5/500ns: 53.0,50.0)

W2004-04-17-23-23-09 - PPMAG4, IRIG:1/0/2
 UTC: 23:23:09.33 to 23:46:55.66, Dur: 1426s
 TimeLngth: 1426.33s, TimeInt: 28ms (35.4pps)
 TimeCor=-13.0s, PPS(min,max,med): 35,36,35
 Timeint/DSPdiff(mn,min,mx):28,28,28/28,28,28
 Prof: 322 to 50886, NumProf(r/t): 17571/50564
 ProcTime/Recs: 23:23:09-23:31:24/0-17570
 ADacqtime: 25ms; DRate: 198.4KB/s; Flags: 0, 0, 0
 Pulse: 275ns, IFfilt: 5.0MHz; ppPol: HH HV VV
 TxPol: HHVV, PRF: 20 10 20 10 kHz, Noiseflg:4,1
 Range: Delay 75m, Spacing 15m, Gates 100
 Ave. Pulses: 84, Rng/Prof Aspect@90m/s: 5.9

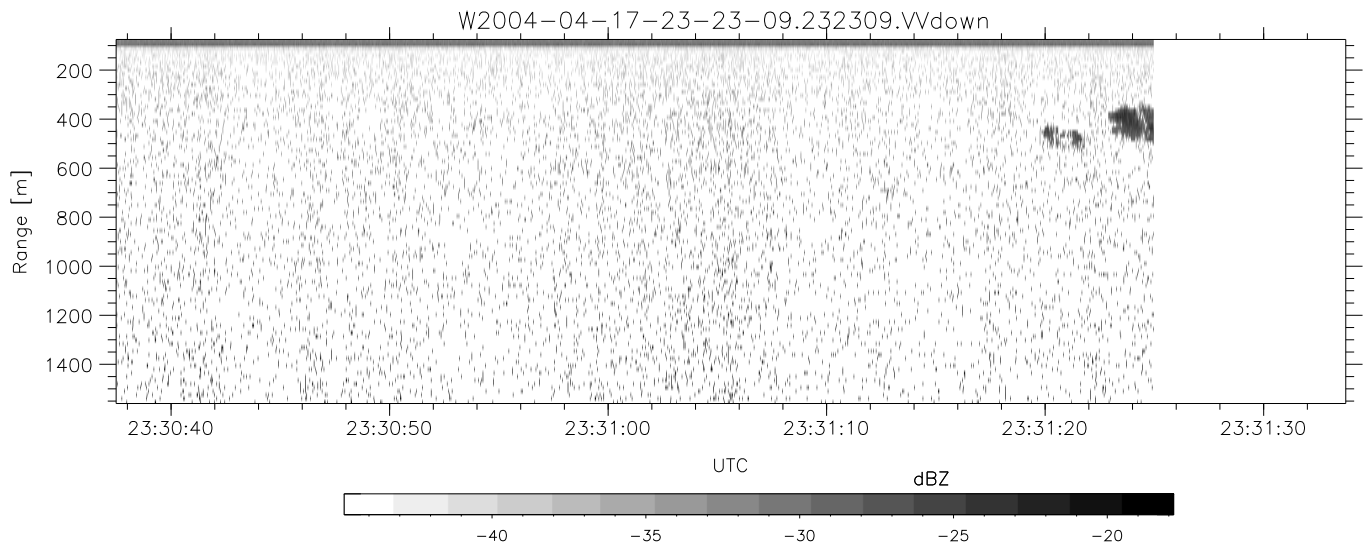
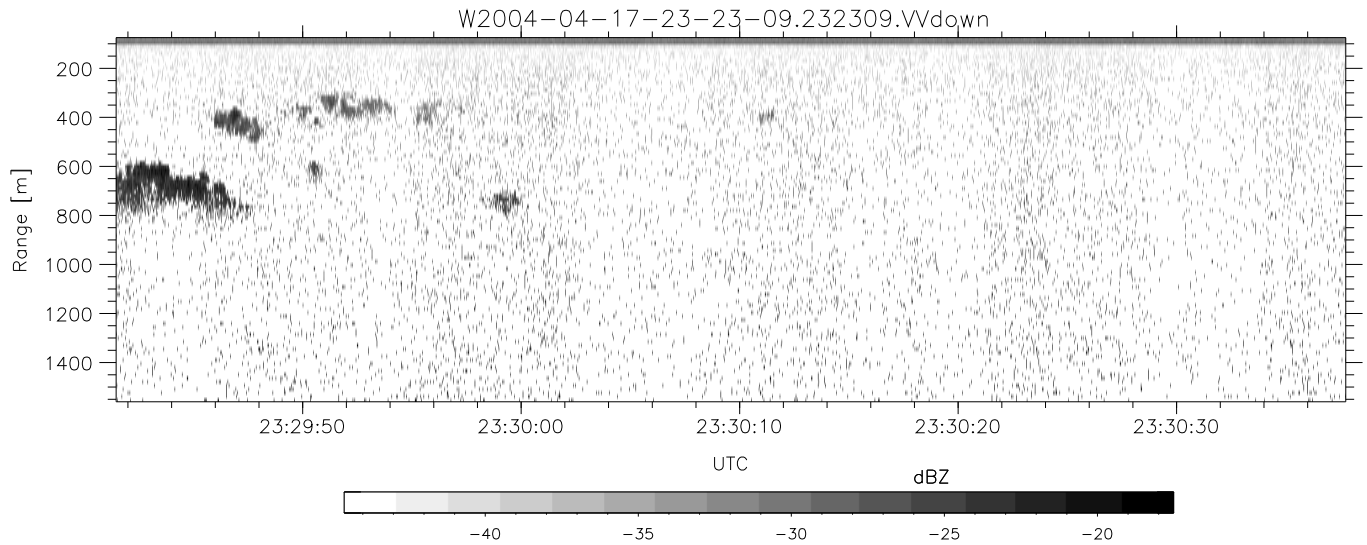
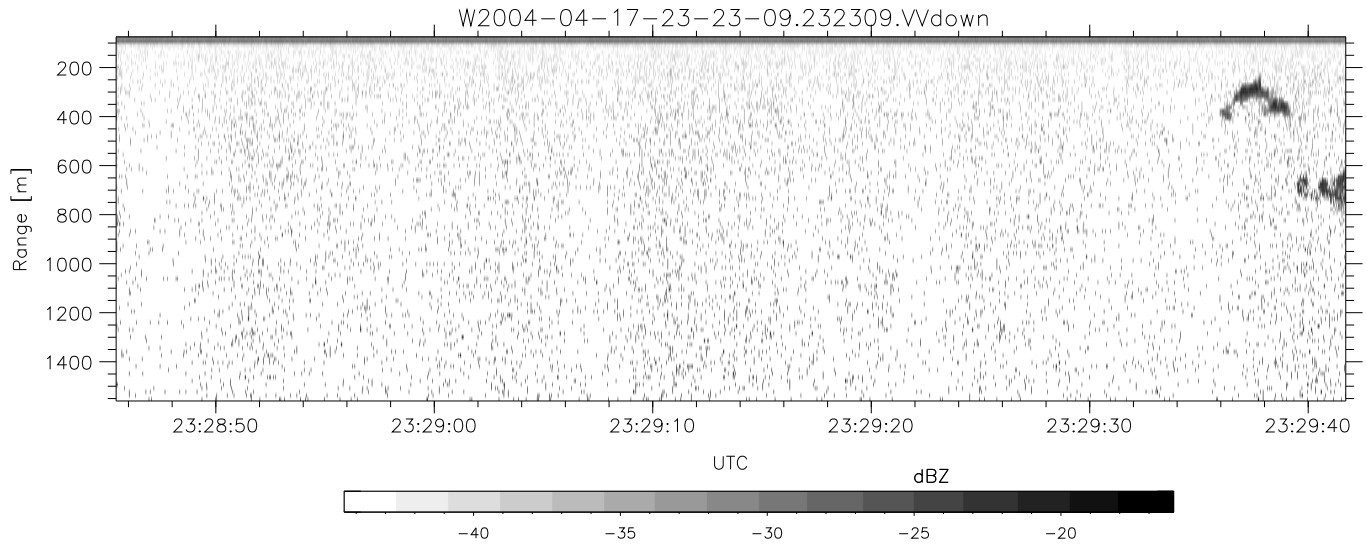
	Min	Max	Mean	Std	Varc%
hhN(dB)	-68.49	-64.68	-66.31	-76.29	10.1
vvN(dB)	-68.04	-64.55	-66.26	-76.16	10.2
hhL(dB)	-6.84	-3.48	-4.82	-14.60	10.5
vvL(dB)	1.12	6.00	4.73	-3.42	15.3
ppN(m/s)	-12.74	12.63	-0.06	4.14	
ppT(m/s)	-100.6	99.80	-0.51	32.74	
hh/vv(dB)	-99	-99	-99	-99	-99
vh/hh(dB)	-99	-99	-99	-99	-99
hv/vv(dB)	-99	-99	-99	-99	-99
hnjmp(dB)			-0.17		
vnjmp(dB)			-0.17		



CIFEX 2004 Data (cal/250ns+2.5/100ns-3.5/500ns: 53.0,50.0)

W2004-04-17-23-23-09 - PPMAG4, IRIG:1/0/2
 UTC: 23:23:09.33 to 23:46:55.66, Dur: 1426s
 TimeLngth: 1426.33s, TimeInt: 28ms (35.4pps)
 TimeCor=-13.0s, PPS(min,max,med): 35,36,35
 Timeint/DSPdiff(mn,min,mx):28,28,28/28,28,28
 Prof: 322 to 50886, NumProf(r/t): 17571/50564
 ProcTime/Recs: 23:23:09-23:31:24/0-17570
 ADacqtime: 25ms; DRate: 198.4KB/s; Flags: 0, 0, 0
 Pulse: 275ns, IFfilt: 5.0MHz; ppPol: HH HV VV
 TxPol: HHVV, PRF: 20 10 20 10 kHz, Noiseflg:4,1
 Range: Delay 75m, Spacing 15m, Gates 100
 Ave. Pulses: 84, Rng/Prof Aspect@90m/s: 5.9

	Min	Max	Mean	Std	Varc%
hhN (dB)	-68.49	-64.68	-66.31	-76.29	10.1
vvN (dB)	-68.04	-64.55	-66.26	-76.16	10.2
hhL (dB)	-6.84	-3.48	-4.82	-14.60	10.5
vvL (dB)	1.12	6.00	4.73	-3.42	15.3
ppN (m/s)	-12.74	12.63	-0.06	4.14	
ppT (m/s)	-100.6	99.80	-0.51	32.74	
hh/vv (dB)	-99	-99	-99	-99	-99
vh/hh (dB)	-99	-99	-99	-99	-99
hv/vv (dB)	-99	-99	-99	-99	-99
hnjmp (dB)			-0.17		
vnjmp (dB)			-0.17		



CIFEX 2004 Data (cal/250ns+2.5/100ns-3.5/500ns: 53.0,50.0)

W2004-04-17-23-23-09 - PPMAG4, IRIG:1/0/2
 UTC: 23:23:09.33 to 23:46:55.66, Dur: 1426s
 TimeLngth: 1426.33s, TimeInt: 28ms (35.4pps)
 TimeCor=-13.0s, PPS(min,max,med): 35,36,35
 Timeint/DSPdiff(mn,min,mx):28,28,28/28,28,28
 Prof: 322 to 50886, NumProf(r/t): 17571/50564
 ProcTime/Recs: 23:23:09-23:31:24/0-17570
 ADacqtime: 25ms; DRate: 198.4KB/s; Flags: 0, 0, 0
 Pulse: 275ns, IFfilt: 5.0MHz; ppPol: HH HV VV
 TxPol: HHVV, PRF: 20 10 20 10 kHz, NoiseFlg:4,1
 Range: Delay 75m, Spacing 15m, Gates 100
 Ave. Pulses: 84, Rng/Prof Aspect@90m/s: 5.9

	Min	Max	Mean	Std	Varc%
hhN(dB)	-68.49	-64.68	-66.31	-76.29	10.1
vvN(dB)	-68.04	-64.55	-66.26	-76.16	10.2
hhL(dB)	-6.84	-3.48	-4.82	-14.60	10.5
vvL(dB)	1.12	6.00	4.73	-3.42	15.3
ppN(m/s)	-12.74	12.63	-0.06	4.14	
ppT(m/s)	-100.6	99.80	-0.51	32.74	
hh/vv(dB)	-99	-99	-99	-99	-99
vh/hh(dB)	-99	-99	-99	-99	-99
hv/vv(dB)	-99	-99	-99	-99	-99
hn_jmp(dB)			-0.17		
vn_jmp(dB)			-0.17		