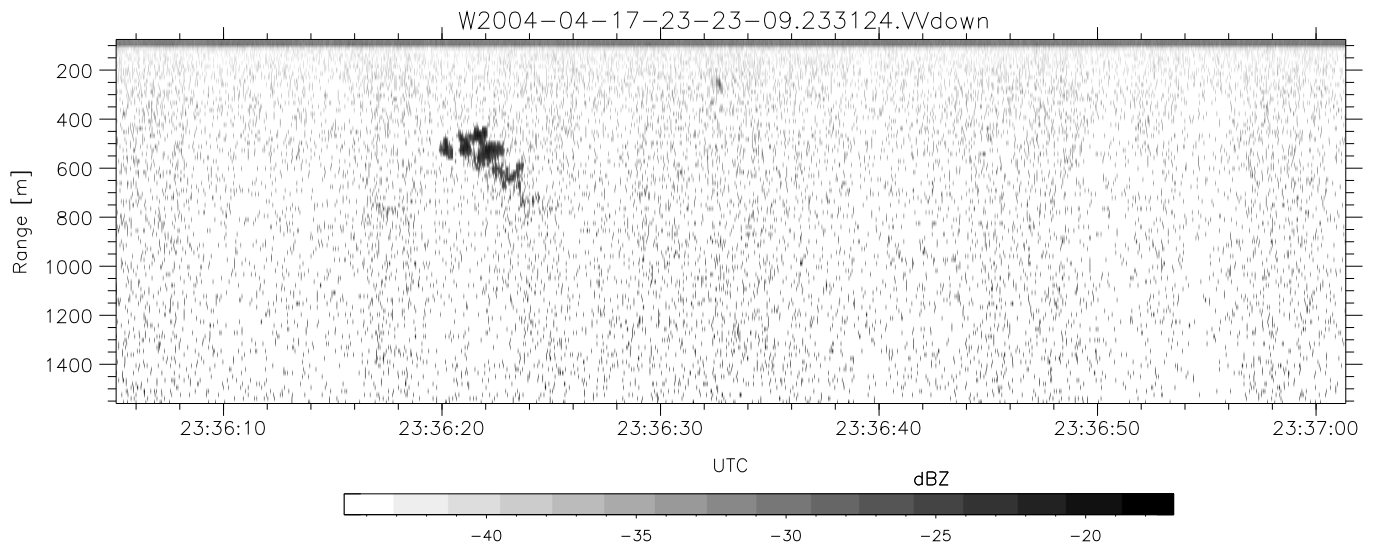
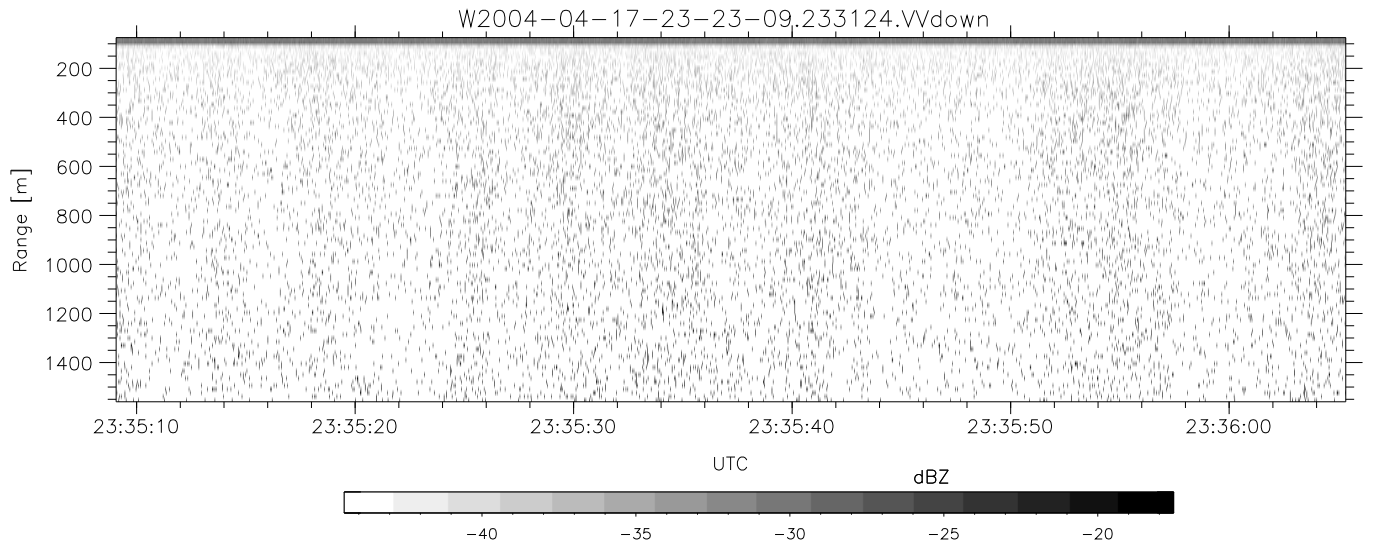
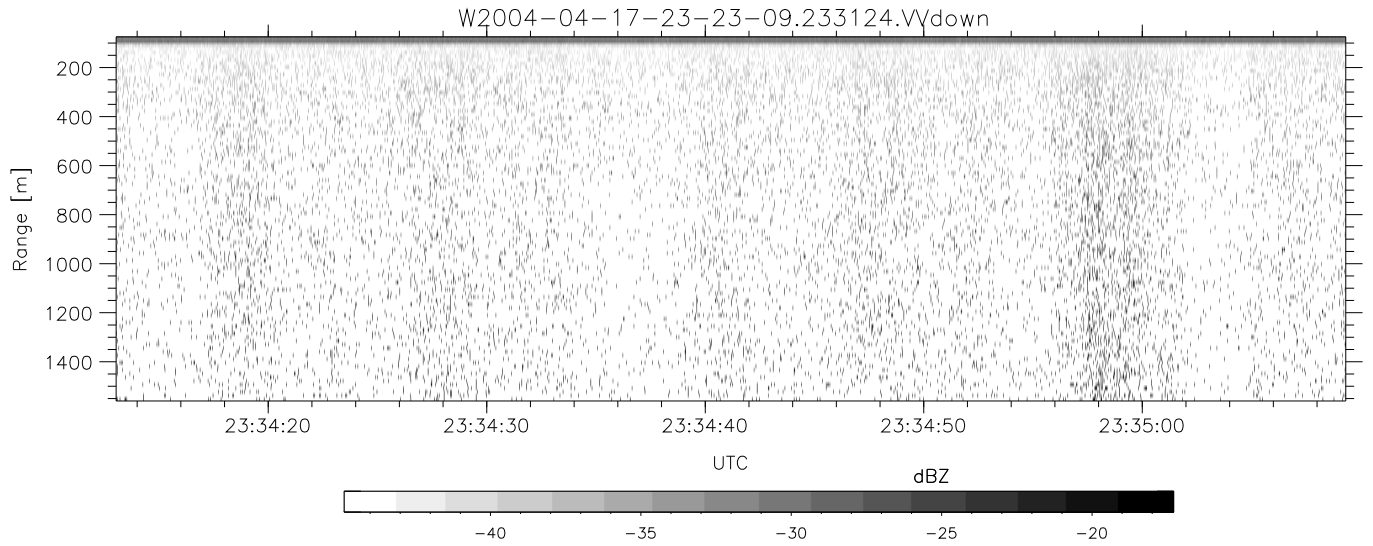


CIFEX 2004 Data (cal/250ns+2.5/100ns-3.5/500ns: 53.0,50.0)

W2004-04-17-23-23-09 - PPMAG4, IRIG:1/0/2
 UTC: 23:23:09.33 to 23:46:55.66, Dur: 1426s
 TimeLngth: 1426.33s, TimeInt: 28ms (35.4pps)
 TimeCor=-13.0s, PPS(min,max,med): 35,36,35
 Timeint/DSPdiff(mn,min,mx):28,28,39/28,28,28
 Prof: 322 to 50886, NumProf(r/t): 17571/50564
 ProcTime/Recs: 23:31:24-23:39:40/17571-35141
 ADacqtime: 25ms; DRate: 198.4KB/s; Flags: 0, 0, 0
 Pulse: 275ns, IFfilt: 5.0MHz; ppPol: HH HV VV
 TxPol: HHVV, PRF: 20 10 20 10 kHz, NoiseFlg:2,1
 Range: Delay 75m, Spacing 15m, Gates 100
 Ave. Pulses: 84, Rng/Prof Aspect@90m/s: 5.9

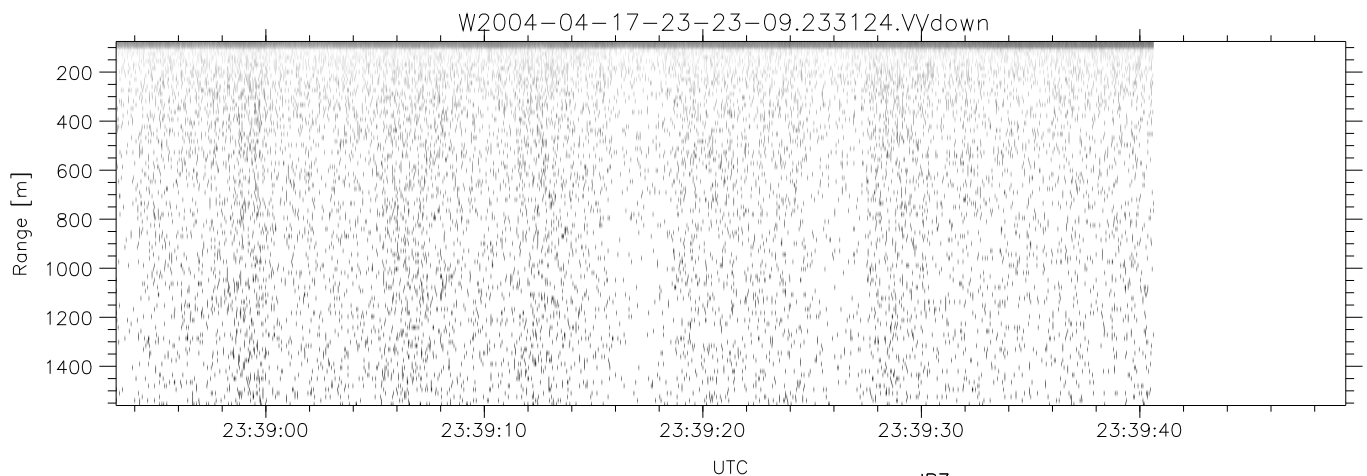
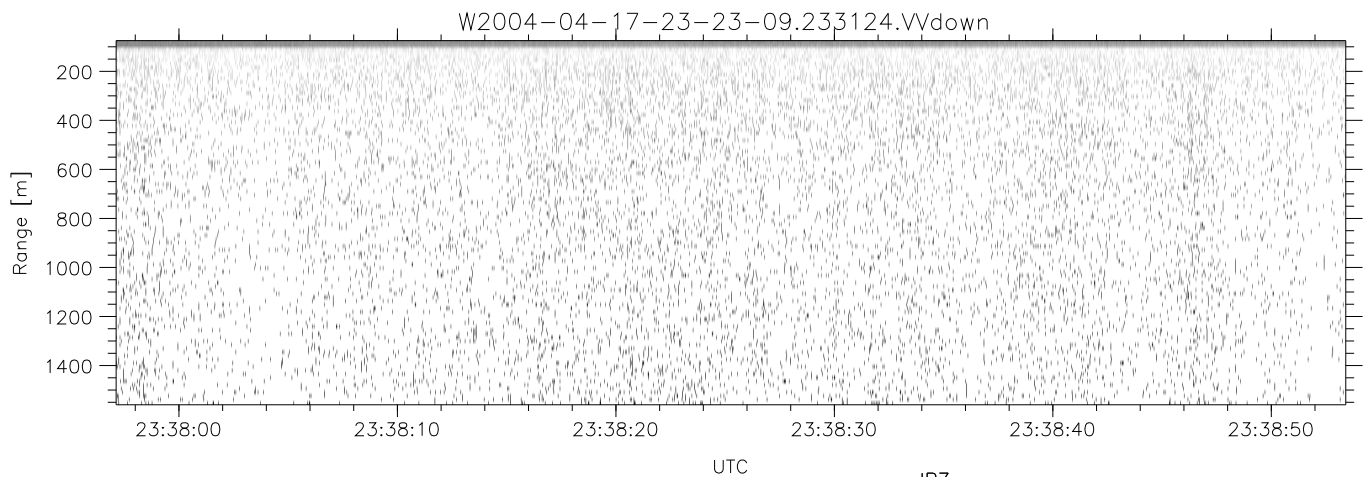
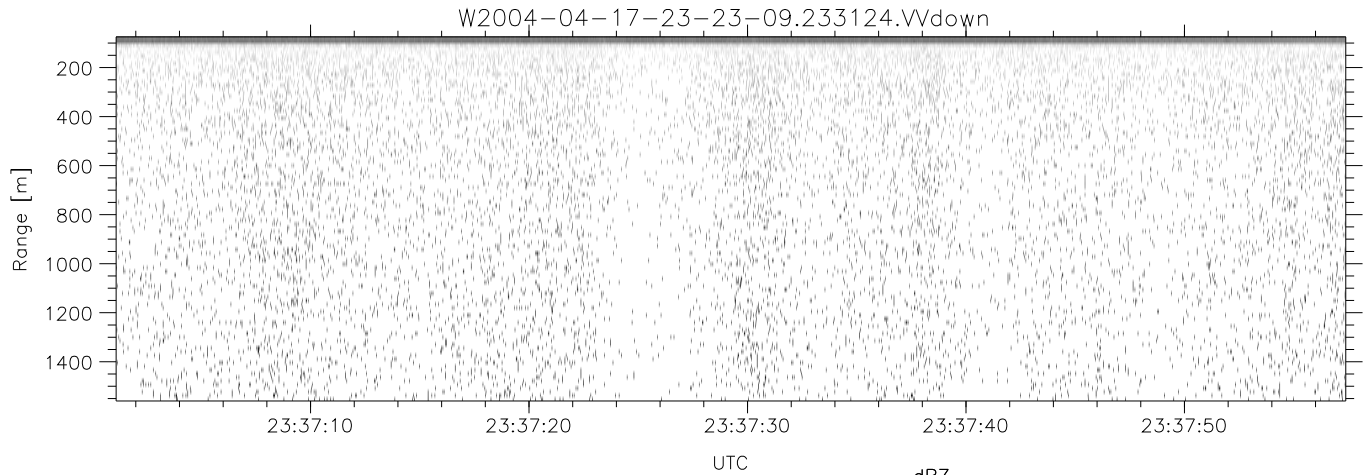
	Min	Max	Mean	Std	Varc%
hhN (dB)	-68.01	-64.84	-66.33	-76.34	10.0
vvN (dB)	-68.11	-64.67	-66.31	-76.24	10.1
hhL (dB)	-11.34	-4.56	-6.31	-12.47	24.2
vvL (dB)	-4.09	6.00	4.24	-0.31	35.1
ppN (m/s)	-12.71	12.72	0.01	4.14	
ppT (m/s)	-100.3	100.46	0.11	32.67	
hh/vv (dB)	-99	-99	-99	-99	-99
vh/hh (dB)	-99	-99	-99	-99	-99
hv/vv (dB)	-99	-99	-99	-99	-99
hn_jmp (dB)			0.15		
vn_jmp (dB)			0.17		



CIFEX 2004 Data (cal/250ns+2.5/100ns-3.5/500ns: 53.0,50.0)

W2004-04-17-23-23-09 - PPMAG4, IRIG:1/0/2
 UTC: 23:23:09.33 to 23:46:55.66, Dur: 1426s
 TimeLngth: 1426.33s, TimeInt: 28ms (35.4pps)
 TimeCor=-13.0s, PPS(min,max,med): 35,36,35
 Timeint/DSPdiff(mn,min,mx):28,28,39/28,28,28
 Prof: 322 to 50886, NumProf(r/t): 17571/50564
 ProcTime/Recs: 23:31:24-23:39:40/17571-35141
 ADacqtime: 25ms; DRate: 198.4KB/s; Flags: 0, 0, 0
 Pulse: 275ns, IFilt: 5.0MHz; ppPol: HH HV VV
 TxPol: HHVV, PRF: 20 10 20 10 kHz, NoiseFlg:2,1
 Range: Delay 75m, Spacing 15m, Gates 100
 Ave. Pulses: 84, Rng/Prof Aspect@90m/s: 5.9

	Min	Max	Mean	Std	Varc%
hhN (dB)	-68.01	-64.84	-66.33	-76.34	10.0
vvN (dB)	-68.11	-64.67	-66.31	-76.24	10.1
hhL (dB)	-11.34	-4.56	-6.31	-12.47	24.2
vvL (dB)	-4.09	6.00	4.24	-0.31	35.1
ppN (m/s)	-12.71	12.72	0.01	4.14	
ppT (m/s)	-100.3	100.46	0.11	32.67	
hh/vv (dB)	-99	-99	-99	-99	-99
vh/hh (dB)	-99	-99	-99	-99	-99
hv/vv (dB)	-99	-99	-99	-99	-99
hn_jmp (dB)			0.15		
vn_jmp (dB)			0.17		



CIFEX 2004 Data (cal/250ns+2.5/100ns-3.5/500ns: 53.0,50.0)

W2004-04-17-23-23-09 - PPMAG4, IRIG:1/0/2
 UTC: 23:23:09.33 to 23:46:55.66, Dur: 1426s
 TimeLngth: 1426.33s, TimeInt: 28ms (35.4pps)
 TimeCor=-13.0s, PPS(min,max,med): 35,36,35
 Timeint/DSPdiff(mn,min,mx):28,28,39/28,28,28
 Prof: 322 to 50886, NumProf(r/t): 17571/50564
 ProcTime/Recs: 23:31:24-23:39:40/17571-35141
 ADacqtime: 25ms; DRate: 198.4KB/s; Flags: 0, 0, 0
 Pulse: 275ns, IFilt: 5.0MHz; ppPol: HH HV VV
 TxPol: HHV, PRF: 20 10 20 10 kHz, NoiseFlg:2,1
 Range: Delay 75m, Spacing 15m, Gates 100
 Ave. Pulses: 84, Rng/Prof Aspect@90m/s: 5.9

	Min	Max	Mean	Std	Varc%
hhN (dB)	-68.01	-64.84	-66.33	-76.34	10.0
vvN (dB)	-68.11	-64.67	-66.31	-76.24	10.1
hhL (dB)	-11.34	-4.56	-6.31	-12.47	24.2
vvL (dB)	-4.09	6.00	4.24	-0.31	35.1
ppN (m/s)	-12.71	12.72	0.01	4.14	
ppT (m/s)	-100.3	100.46	0.11	32.67	
hh/vv (dB)	-99	-99	-99	-99	-99
vh/hh (dB)	-99	-99	-99	-99	-99
hv/vv (dB)	-99	-99	-99	-99	-99
hn_jmp (dB)			0.15		
vn_jmp (dB)			0.17		