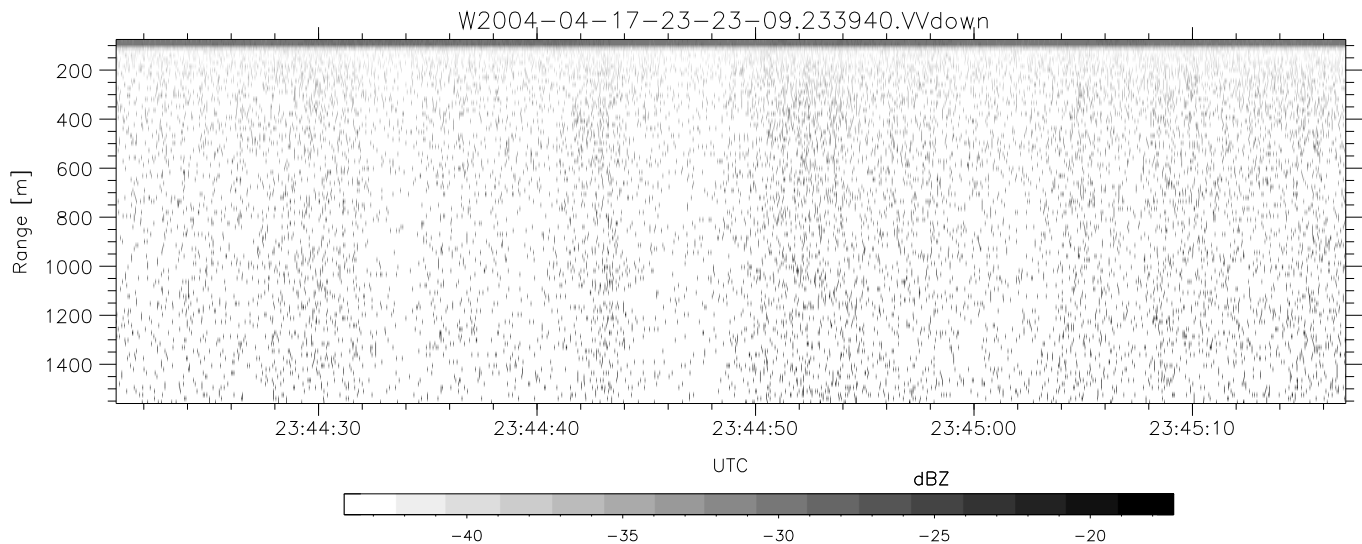
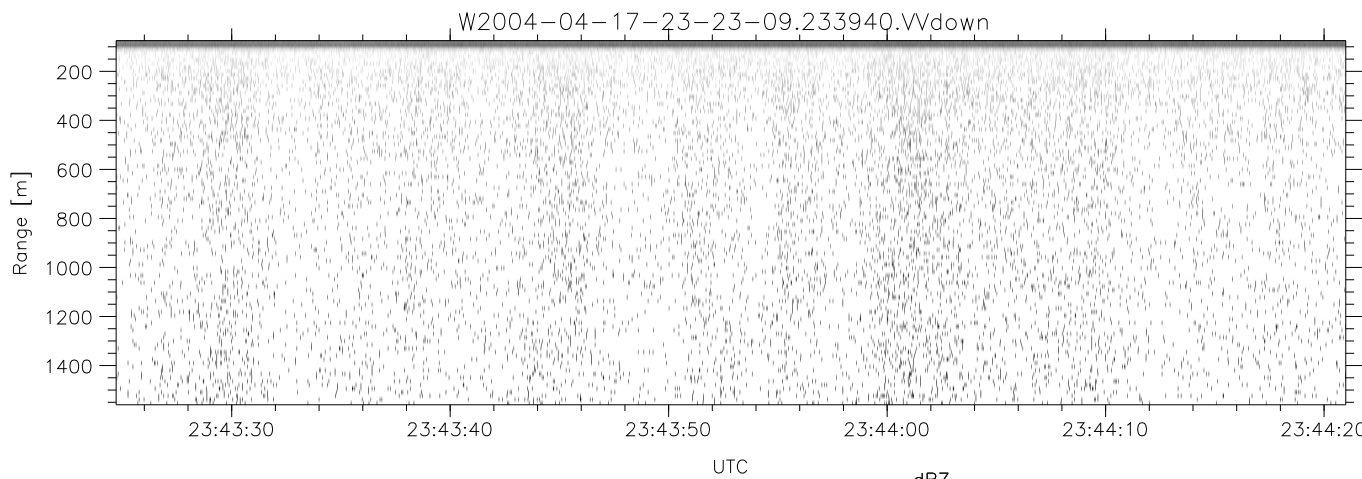
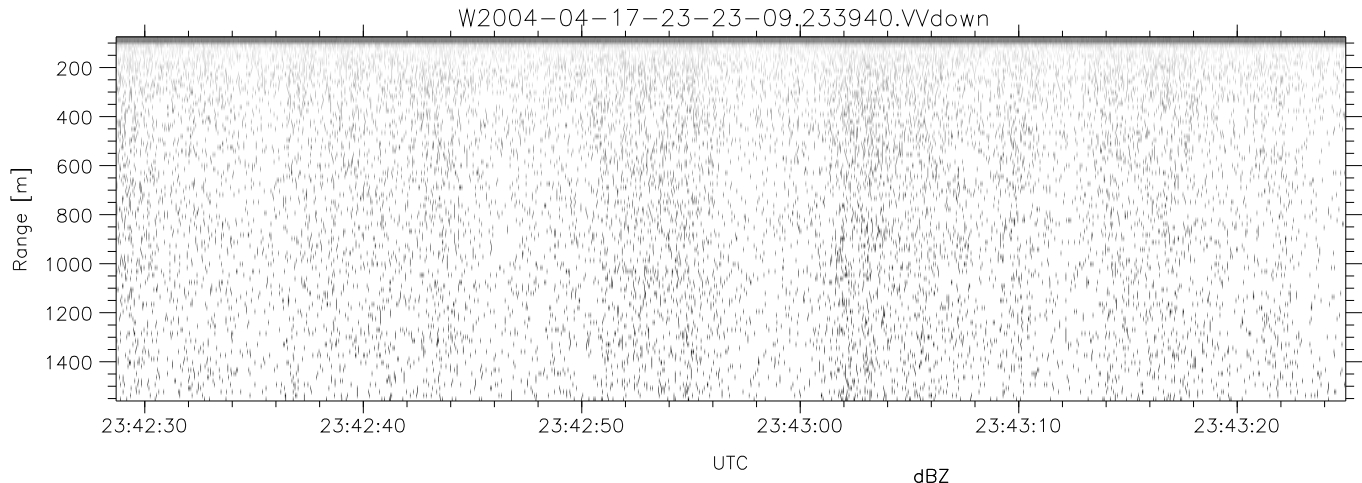


CIFEX 2004 Data (cal/250ns+2.5/100ns-3.5/500ns: 53.0,50.0)

W2004-04-17-23-23-09 - PPMAG4, IRIG:1/0/2
 UTC: 23:23:09.33 to 23:46:55.66, Dur: 1426s
 TimeLngth: 1426.33s, TimeInt: 28ms (35.4pps)
 TimeCor=-13.0s, PPS(min,max,med): 35,36,35
 Timeint/DSPdiff(mn,min,mx):28,28,28/28,28,28
 Prof: 322 to 50886, NumProf(r/t): 15422/50564
 ProcTime/Recs: 23:39:40-23:46:55/35142-50563
 ADacqtime: 25ms; DRate: 198.4KB/s; Flags: 0, 0, 0
 Pulse: 275ns, IFfilt: 5.0MHz; ppPol: HH HV VV
 TxPol: HHVV, PRF: 20 10 20 10 kHz, Noiseflg:4,4
 Range: Delay 75m, Spacing 15m, Gates 100
 Ave. Pulses: 84, Rng/Prof Aspect@90m/s: 5.9

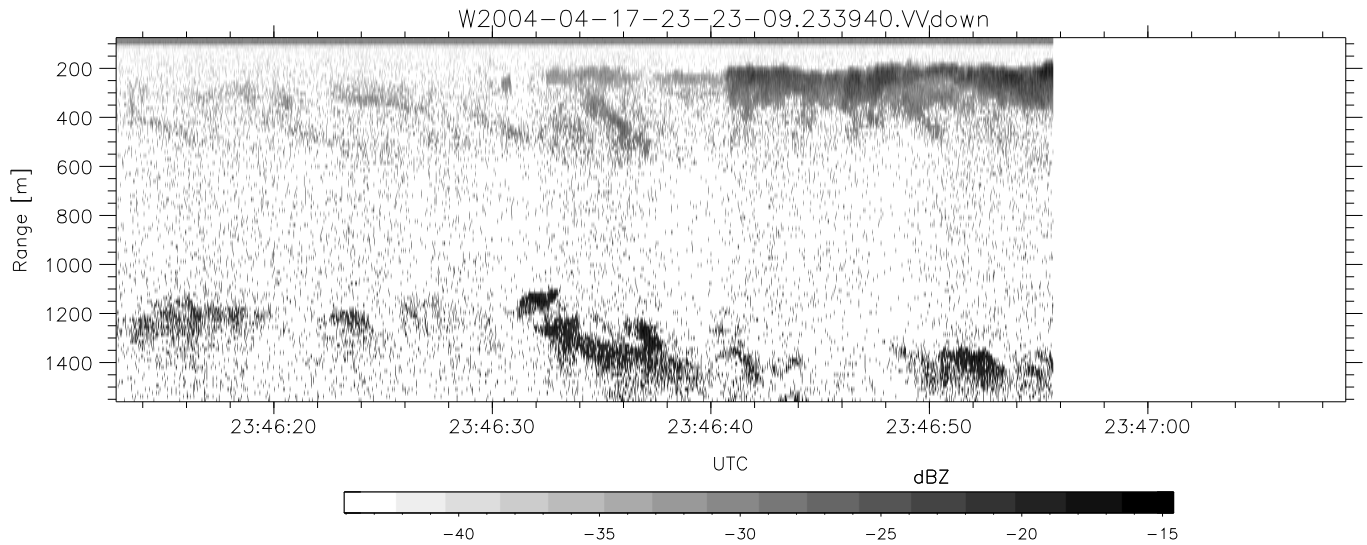
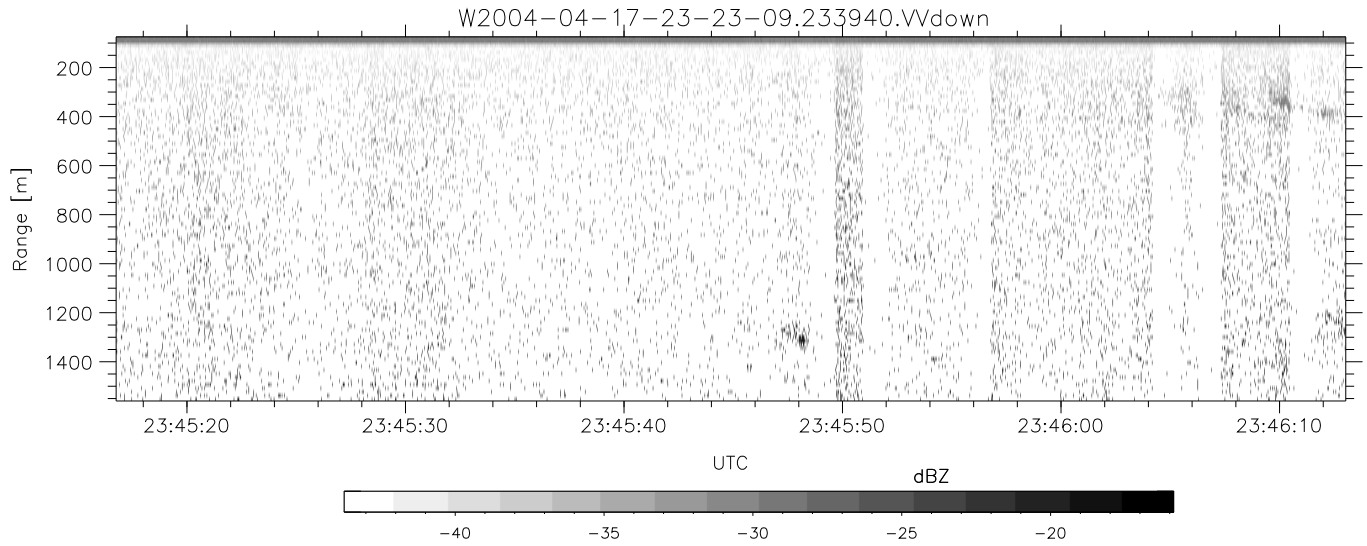
	Min	Max	Mean	Std	Varc%
hhN (dB)	-68.16	-64.77	-66.30	-76.26	10.1
vvN (dB)	-68.29	-64.53	-66.35	-76.09	10.6
hhL (dB)	-7.31	2.37	0.59	-4.49	31.1
vvL (dB)	-3.07	6.00	4.38	1.01	46.1
ppN (m/s)	-12.48	12.71	-0.12	4.19	
ppT (m/s)	-98.61	100.41	-0.93	33.06	
hh/vv (dB)	-99	-99	-99	-99	-99
vh/hh (dB)	-99	-99	-99	-99	-99
hv/vv (dB)	-99	-99	-99	-99	-99
hn_jmp (dB)			-0.17		
vn_jmp (dB)			-0.16		



CIFEX 2004 Data (cal/250ns+2.5/100ns-3.5/500ns: 53.0,50.0)

W2004-04-17-23-23-09 - PPMAG4, IRIG:1/0/2
 UTC: 23:23:09.33 to 23:46:55.66, Dur: 1426s
 TimeLngth: 1426.33s, TimeInt: 28ms (35.4pps)
 TimeCor=-13.0s, PPS(min,max,med): 35,36,35
 Timeint/DSPdiff(mn,min,mx):28,28,28/28,28,28
 Prof: 322 to 50886, NumProf(r/t): 15422/50564
 ProcTime/Recs: 23:39:40-23:46:55/35142-50563
 ADacqtime: 25ms; DRate: 198.4KB/s; Flags: 0, 0, 0
 Pulse: 275ns, IFfilt: 5.0MHz; ppPol: HH HV VV
 TxPol: HHVV, PRF: 20 10 20 10 kHz, NoiseFlg:4,4
 Range: Delay 75m, Spacing 15m, Gates 100
 Ave. Pulses: 84, Rng/Prof Aspect@90m/s: 5.9

	Min	Max	Mean	Std	Varc%
hhN (dB)	-68.16	-64.77	-66.30	-76.26	10.1
vvN (dB)	-68.29	-64.53	-66.35	-76.09	10.6
hhL (dB)	-7.31	2.37	0.59	-4.49	31.1
vvL (dB)	-3.07	6.00	4.38	1.01	46.1
ppN (m/s)	-12.48	12.71	-0.12	4.19	
ppT (m/s)	-98.61	100.41	-0.93	33.06	
hh/vv (dB)	-99	-99	-99	-99	-99
vh/hh (dB)	-99	-99	-99	-99	-99
hv/vv (dB)	-99	-99	-99	-99	-99
hn_jmp (dB)			-0.17		
vn_jmp (dB)			-0.16		



CIFEX 2004 Data (cal/250ns+2.5/100ns-3.5/500ns: 53.0,50.0)

W2004-04-17-23-23-09 - PPMAG4, IRIG:1/0/2
 UTC: 23:23:09.33 to 23:46:55.66, Dur: 1426s
 TimeLngth: 1426.33s, TimeInt: 28ms (35.4pps)
 TimeCor=-13.0s, PPS(min,max,med): 35,36,35
 Timeint/DSPdiff(mn,min,mx):28,28,28/28,28,28
 Prof: 322 to 50886, NumProf(r/t): 15422/50564
 ProcTime/Recs: 23:39:40-23:46:55/35142-50563
 ADacqtime: 25ms; DRate: 198.4KB/s; Flags: 0, 0, 0
 Pulse: 275ns, IFfilt: 5.0MHz; ppPol: HH HV VV
 TxPol: HHVV, PRF: 20 10 20 10 kHz, NoiseFlg:4,4
 Range: Delay 75m, Spacing 15m, Gates 100
 Ave. Pulses: 84, Rng/Prof Aspect@90m/s: 5.9

	Min	Max	Mean	Std	Varc%
hhN (dB)	-68.16	-64.77	-66.30	-76.26	10.1
vvN (dB)	-68.29	-64.53	-66.35	-76.09	10.6
hhL (dB)	-7.31	2.37	0.59	-4.49	31.1
vvL (dB)	-3.07	6.00	4.38	1.01	46.1
ppN (m/s)	-12.48	12.71	-0.12	4.19	
ppT (m/s)	-98.61	100.41	-0.93	33.06	
hh/vv (dB)	-99	-99	-99	-99	-99
vh/hh (dB)	-99	-99	-99	-99	-99
hv/vv (dB)	-99	-99	-99	-99	-99
hnjmp (dB)			-0.17		
vnjmp (dB)			-0.16		