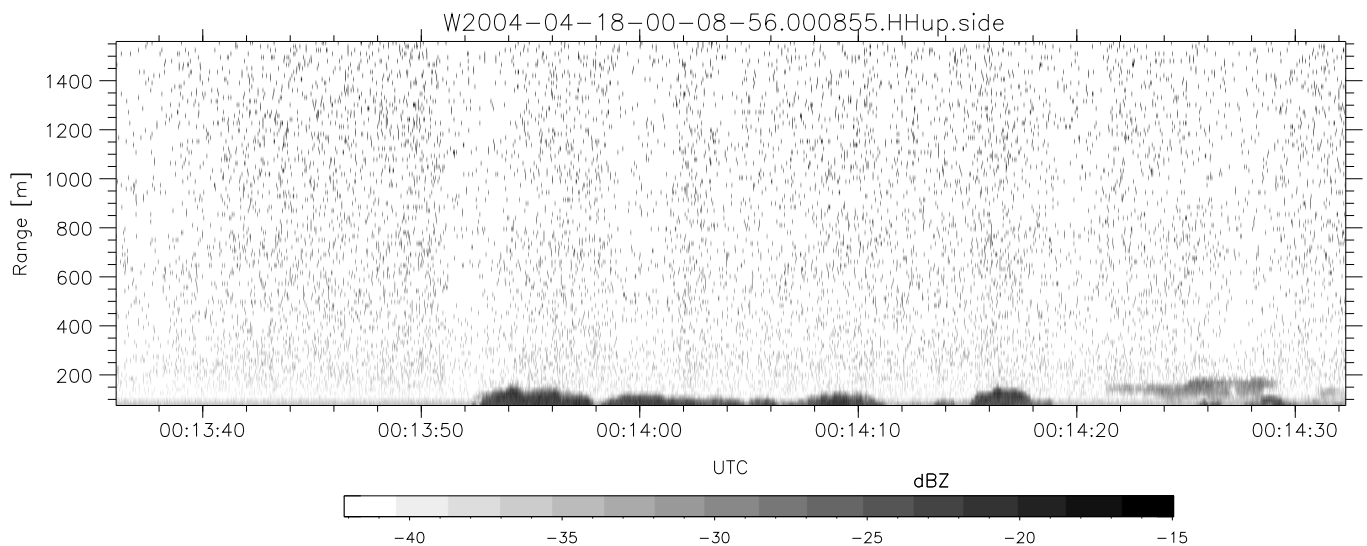
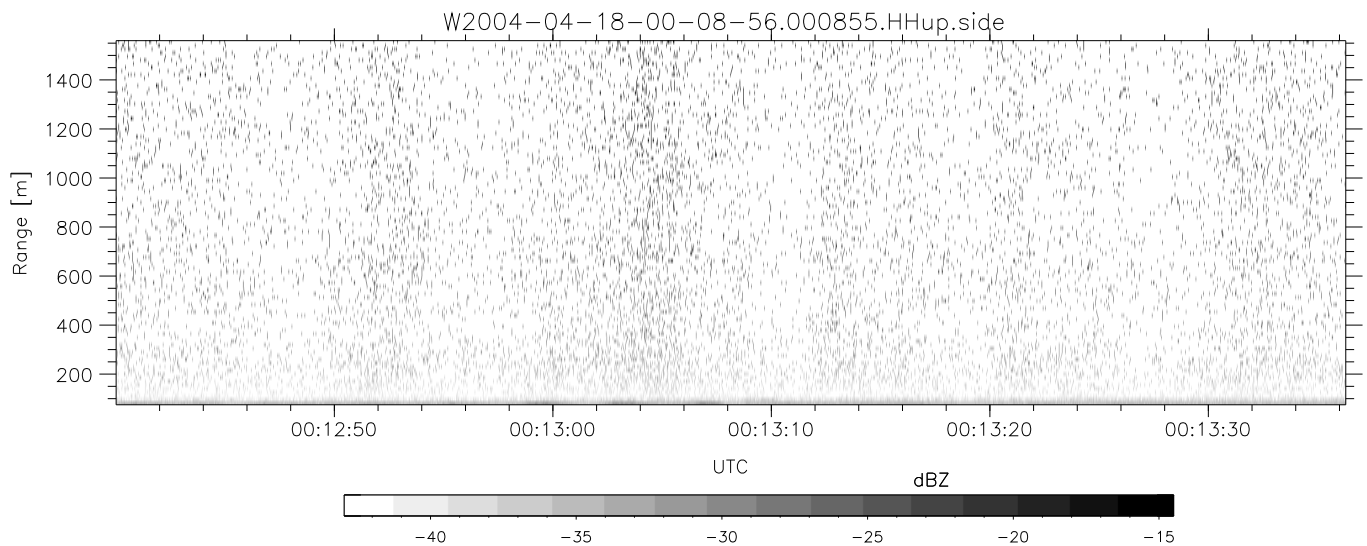
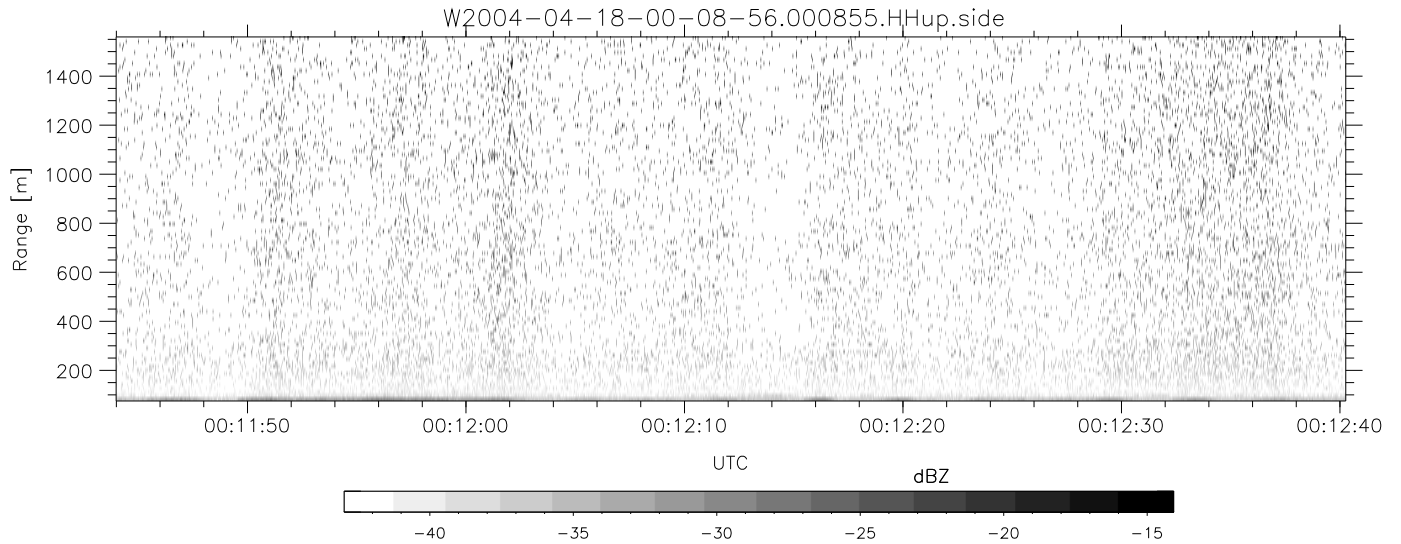


CIFEX 2004 Data (cal/250ns+2.5/100ns-3.5/500ns: 53.0,50.0)

W2004-04-18-00-08-56 - PPMAG4, IRIG:1/0/2
 UTC: 00:08:55.95 to 00:52:49.34, Dur: 2634s
 TimeLngth: 2633.42s, TimeInt: 28ms (35.4pps)
 TimeCor=-13.0s, PPS(min,max,med): 35,36,35
 Timeint/DSPdiff(mn,min,mx):28,28,28/28,28,28
 Prof: 459 to 93814, NumProf(r/t): 17571/93355
 ProcTime/Recs: 00:08:55-00:17:11/0-17570
 ADacqtime: 25ms; DRate: 198.4KB/s; Flags: 0, 0, 0
 Pulse: 275ns, IFfilt: 5.0MHz; ppPol: HH HV VV
 TxPol: HHVV, PRF: 20 10 20 10 kHz, NoiseFlg:4,3
 Range: Delay 75m, Spacing 15m, Gates 100
 Ave. Pulses: 84, Rng/Prof Aspect@90m/s: 5.9

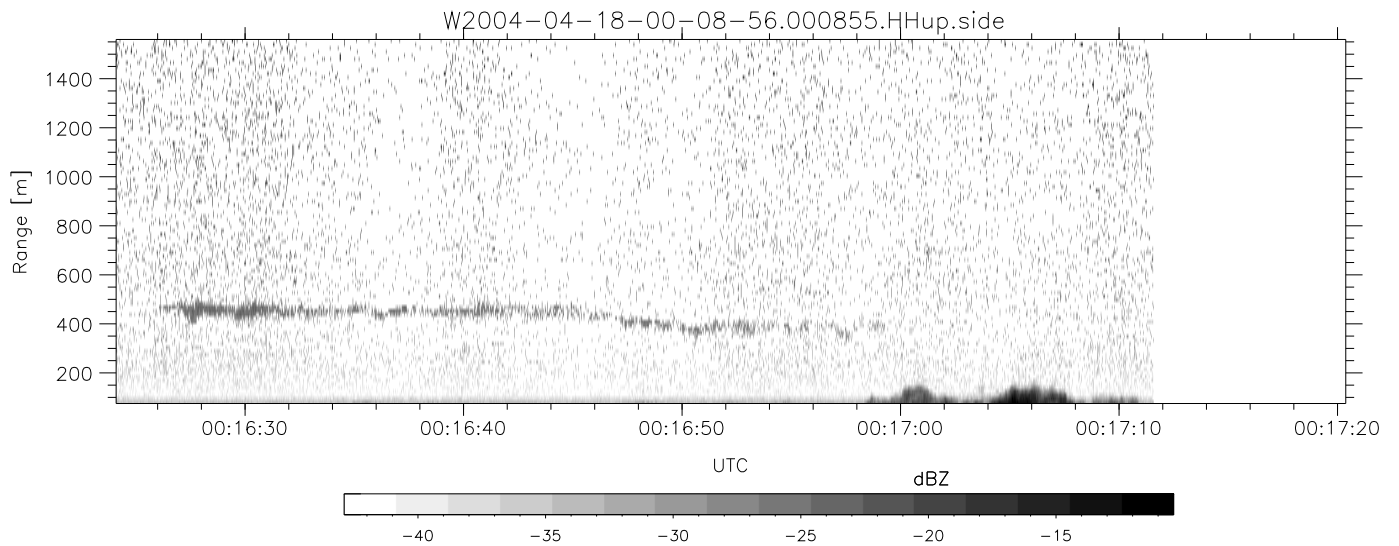
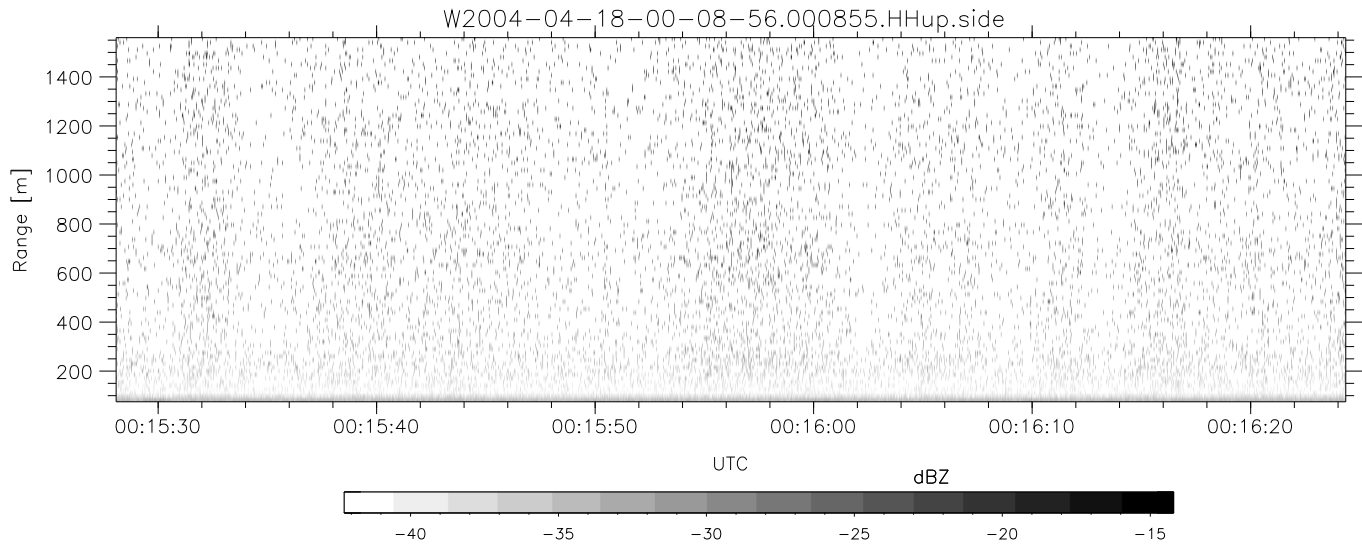
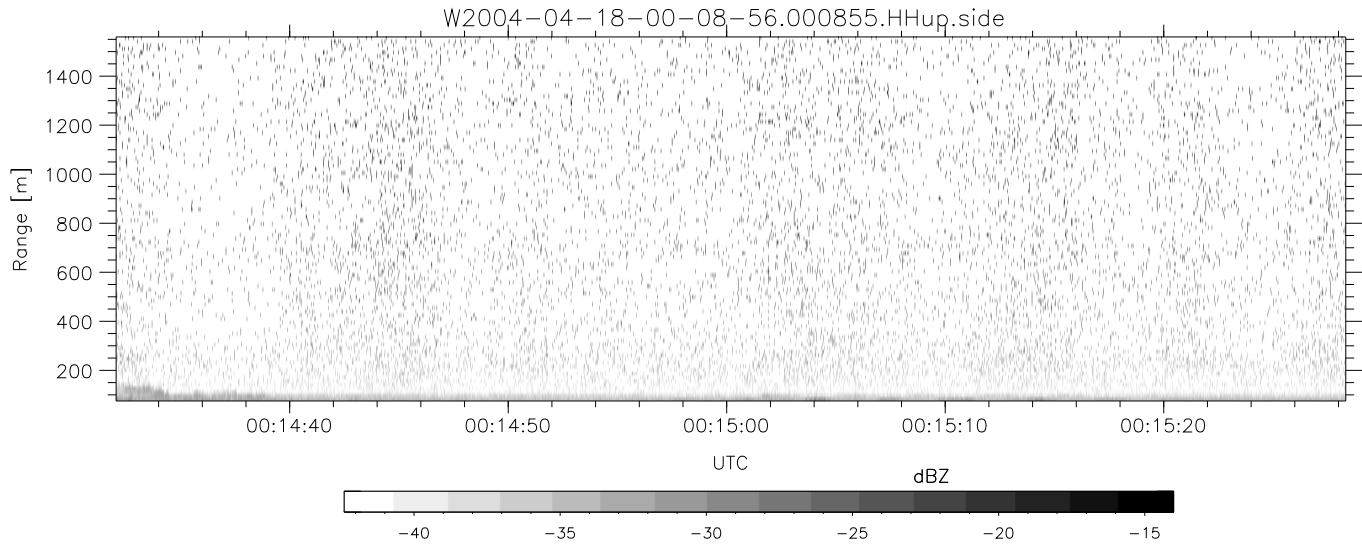
	Min	Max	Mean	Std	Varc%
hhN (dB)	-67.71	-64.44	-66.08	-76.10	10.0
vvN (dB)	-67.96	-64.56	-66.19	-76.15	10.1
hhL (dB)	-18.52	0.53	-7.19	-6.28	123.
vvL (dB)	-15.90	2.60	-5.65	-5.11	113.
ppN (m/s)	-12.04	12.38	0.01	4.15	
ppT (m/s)	-95.08	97.82	0.05	32.82	
hh/vv (dB)	NaN	47.73	28.49	37.49	794.
vh/hh (dB)	-99	-99	-99	-99	-99
hv/vv (dB)	-42.24	-38.20	-39.19	-43.71	35.3
hn_jmp (dB)			0.14		
vn_jmp (dB)			0.16		



CIFEX 2004 Data (cal/250ns+2.5/100ns-3.5/500ns: 53.0,50.0)

W2004-04-18-00-08-56 - PPMAG4, IRIG:1/0/2
 UTC: 00:08:55.95 to 00:52:49.34, Dur: 2634s
 TimeLngth: 2633.42s, TimeInt: 28ms (35.4pps)
 TimeCor=-13.0s, PPS(min,max,med): 35,36,35
 Timeint/DSPdiff(mn,min,mx):28,28,28/28,28,28
 Prof: 459 to 93814, NumProf(r/t): 17571/93355
 ProcTime/Recs: 00:08:55-00:17:11/0-17570
 ADacqtime: 25ms; DRate: 198.4KB/s; Flags: 0, 0, 0
 Pulse: 275ns, IFilt: 5.0MHz; ppPol: HH HV VV
 TxPol: HHVV, PRF: 20 10 20 10 kHz, NoiseFlg:4,3
 Range: Delay 75m, Spacing 15m, Gates 100
 Ave. Pulses: 84, Rng/Prof Aspect@90m/s: 5.9

	Min	Max	Mean	Std	Varc%
hhN(dB)	-67.71	-64.44	-66.08	-76.10	10.0
vvN(dB)	-67.96	-64.56	-66.19	-76.15	10.1
hhL(dB)	-18.52	0.53	-7.19	-6.28	123.
vvL(dB)	-15.90	2.60	-5.65	-5.11	113.
ppN(m/s)	-12.04	12.38	0.01	4.15	
ppT(m/s)	-95.08	97.82	0.05	32.82	
hh/vv(dB)	NaN	47.73	28.49	37.49	794.
vh/hh(dB)	-99	-99	-99	-99	-99
hv/vv(dB)	-42.24	-38.20	-39.19	-43.71	35.3
hnjmp(dB)			0.14		
vnjmp(dB)			0.16		



CIFEX 2004 Data (cal/250ns+2.5/100ns-3.5/500ns: 53.0,50.0)

W2004-04-18-00-08-56 - PPMAG4, IRIG:1/0/2
 UTC: 00:08:55.95 to 00:52:49.34, Dur: 2634s
 TimeLngth: 2633.42s, TimeInt: 28ms (35.4pps)
 TimeCor=-13.0s, PPS(min,max,med): 35,36,35
 Timeint/DSPdiff(mn,min,mx):28,28,28/28,28,28
 Prof: 459 to 93814, NumProf(r/t): 17571/93355
 ProcTime/Recs: 00:08:55-00:17:11/0-17570
 ADacqtime: 25ms; DRate: 198.4KB/s; Flags: 0, 0, 0
 Pulse: 275ns, IFilt: 5.0MHz; ppPol: HH HV VV
 TxPol: HHVV, PRF: 20 10 20 10 kHz, NoiseFlg:4,3
 Range: Delay 75m, Spacing 15m, Gates 100
 Ave. Pulses: 84, Rng/Prof Aspect@90m/s: 5.9

	Min	Max	Mean	Std	Varc%
hhN(dB)	-67.71	-64.44	-66.08	-76.10	10.0
vvN(dB)	-67.96	-64.56	-66.19	-76.15	10.1
hhL(dB)	-18.52	0.53	-7.19	-6.28	123.
vvL(dB)	-15.90	2.60	-5.65	-5.11	113.
ppN(m/s)	-12.04	12.38	0.01	4.15	
ppT(m/s)	-95.08	97.82	0.05	32.82	
hh/vv(dB)	NaN	47.73	28.49	37.49	794
vh/hh(dB)	-99	-99	-99	-99	-99
hv/vv(dB)	-42.24	-38.20	-39.19	-43.71	35.3
hnjmp(dB)			0.14		
vnjmp(dB)			0.16		