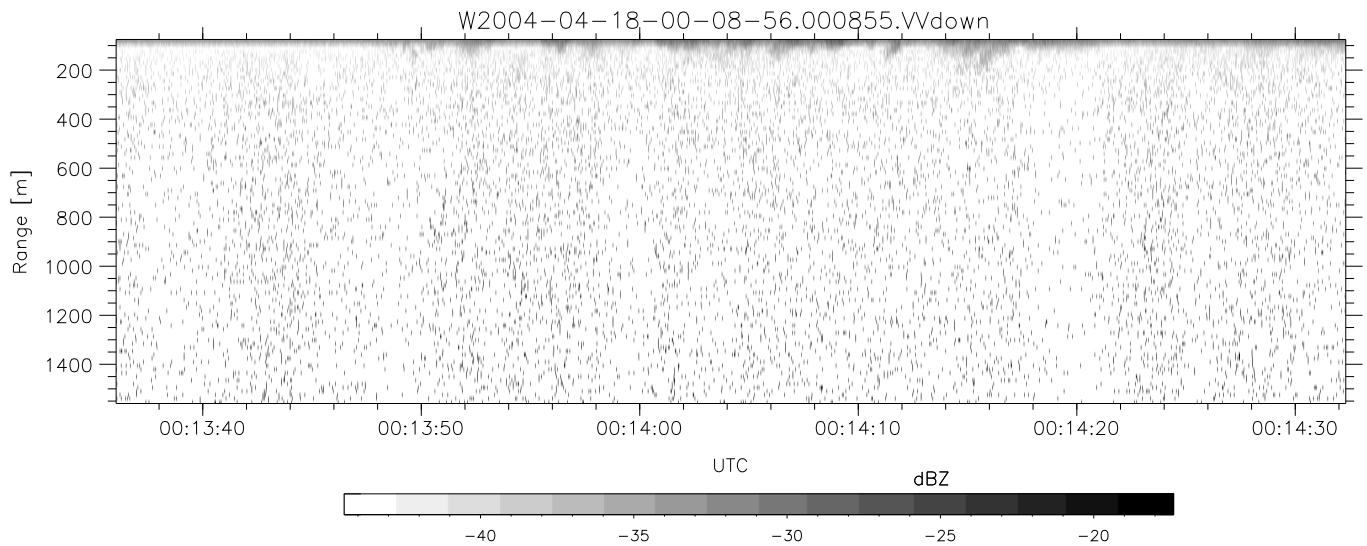
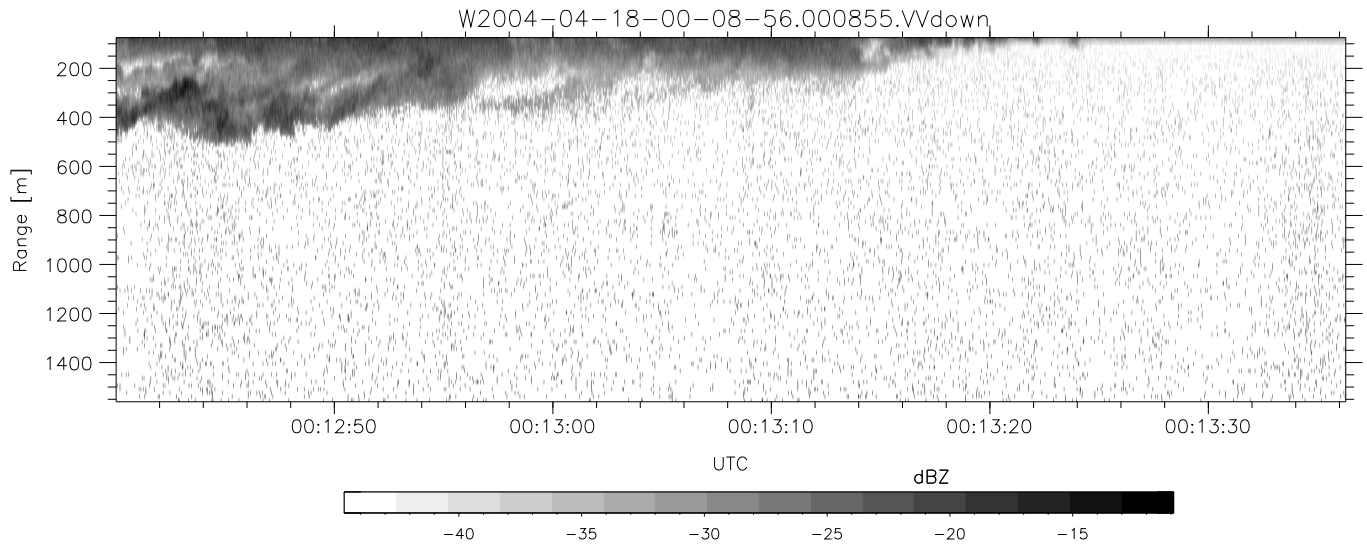
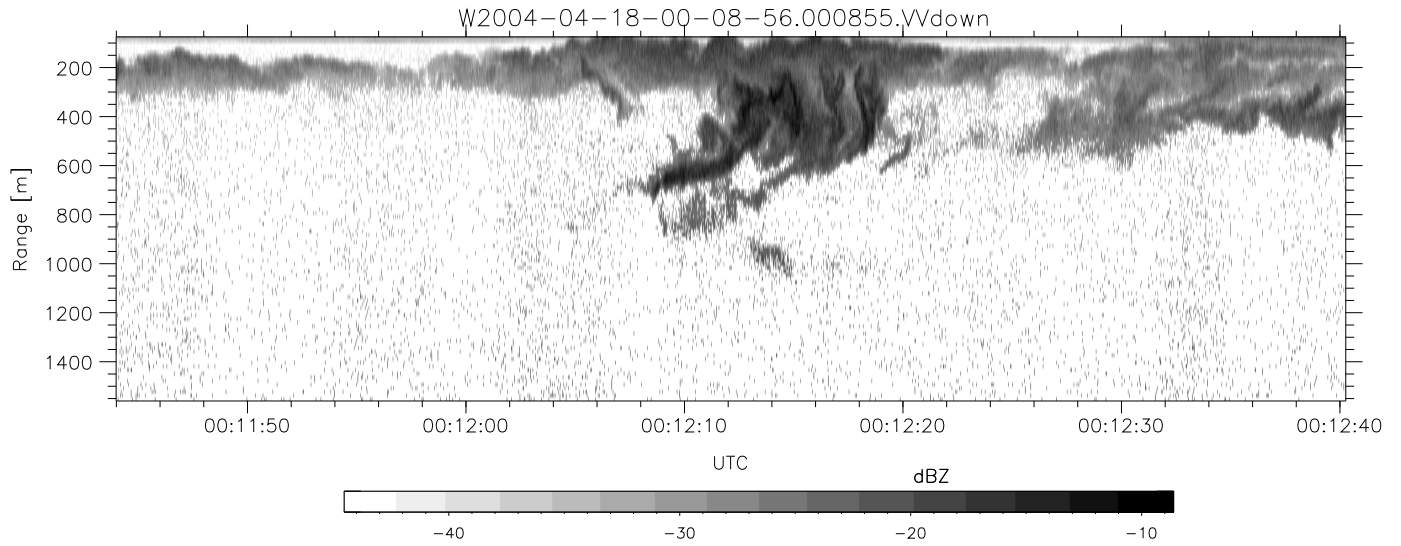


CIFEX 2004 Data (cal/250ns+2.5/100ns-3.5/500ns: 53.0,50.0)

W2004-04-18-00-08-56 - PPMAG4, IRIG:1/0/2  
 UTC: 00:08:55.95 to 00:52:49.34, Dur: 2634s  
 TimeLngth: 2633.42s, TimeInt: 28ms (35.4pps)  
 TimeCor=-13.0s, PPS(min,max,med): 35,36,35  
 Timeint/DSPdiff(mn,min,mx):28,28,28/28,28,28  
 Prof: 459 to 93814, NumProf(r/t): 17571/93355  
 ProcTime/Recs: 00:08:55-00:17:11/0-17570  
 ADacqtime: 25ms; DRate: 198.4KB/s; Flags: 0, 0, 0  
 Pulse: 275ns, IFfilt: 5.0MHz; ppPol: HH HV VV  
 TxPol: HHV, PRF: 20 10 20 10 kHz, Noiseflg:4,3  
 Range: Delay 75m, Spacing 15m, Gates 100  
 Ave. Pulses: 84, Rng/Prof Aspect@90m/s: 5.9

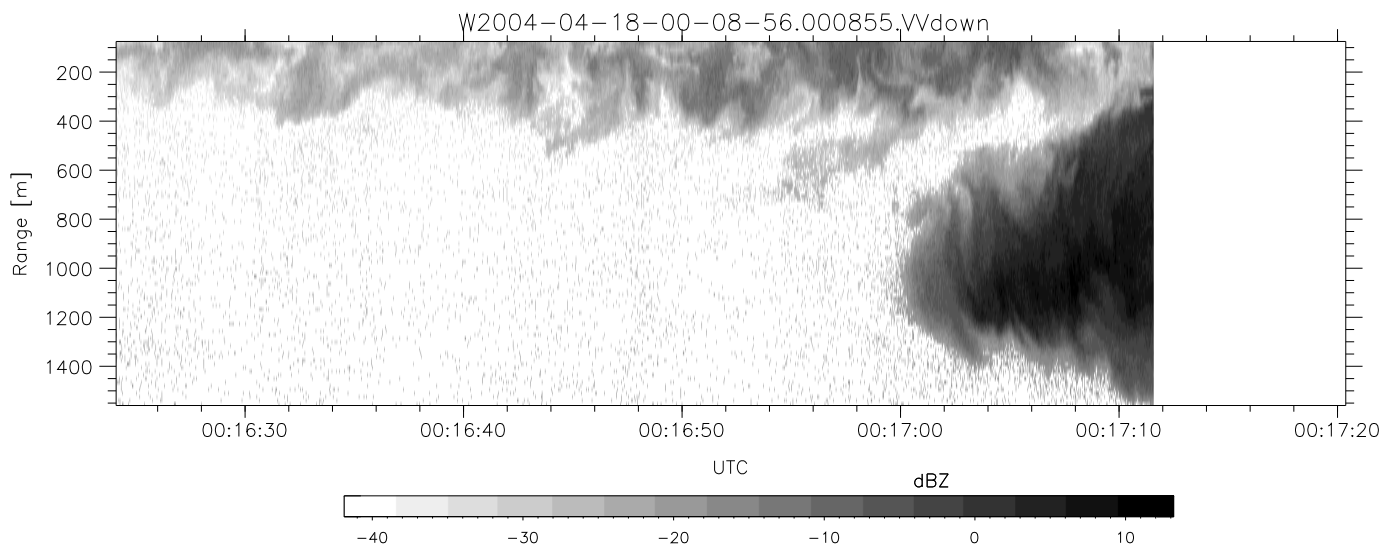
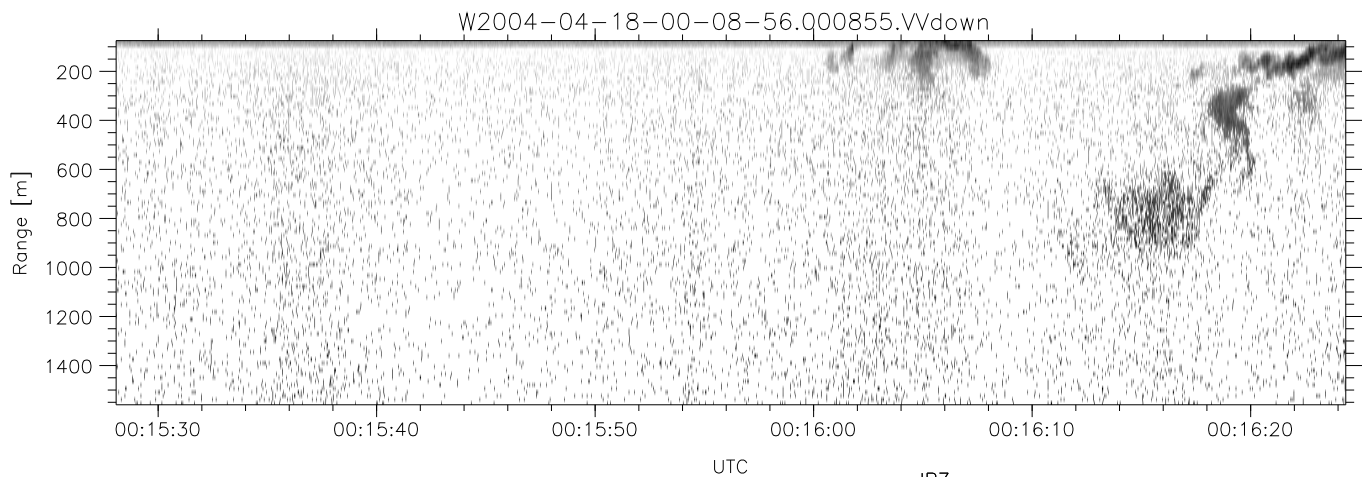
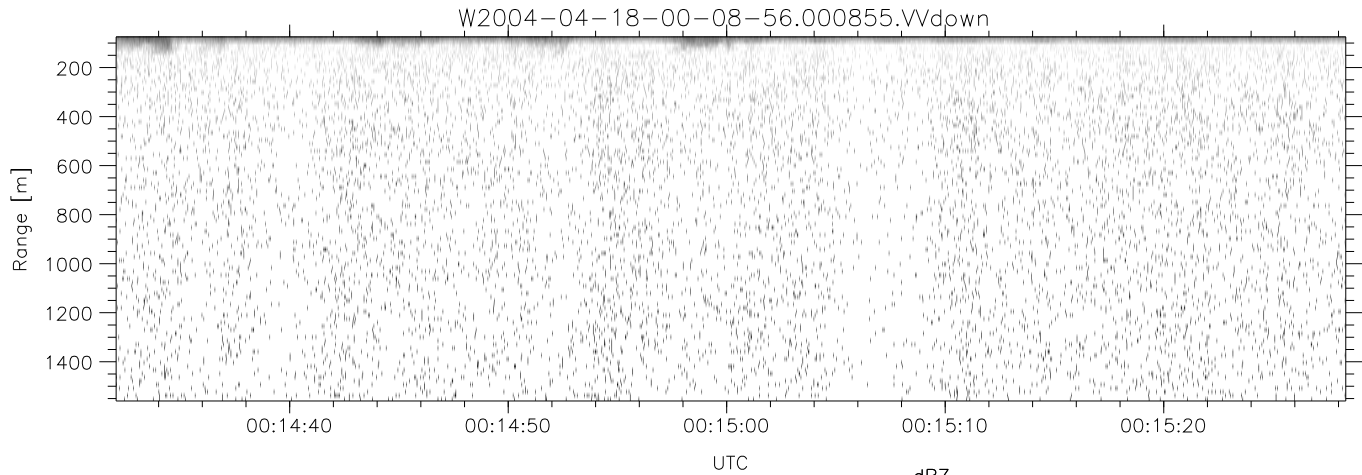
|             | Min    | Max    | Mean   | Std    | Varc% |
|-------------|--------|--------|--------|--------|-------|
| hhN (dB)    | -67.71 | -64.44 | -66.08 | -76.10 | 10.0  |
| vvN (dB)    | -67.96 | -64.56 | -66.19 | -76.15 | 10.1  |
| hhL (dB)    | -18.52 | 0.53   | -7.19  | -6.28  | 123.  |
| vvL (dB)    | -15.90 | 2.60   | -5.65  | -5.11  | 113.  |
| ppN (m/s)   | -12.04 | 12.38  | 0.01   | 4.15   |       |
| ppT (m/s)   | -95.08 | 97.82  | 0.05   | 32.82  |       |
| hh/vv (dB)  | NaN    | 47.73  | 28.49  | 37.49  | 794.  |
| vh/hh (dB)  | -99    | -99    | -99    | -99    | -99   |
| hv/vv (dB)  | -42.24 | -38.20 | -39.19 | -43.71 | 35.3  |
| hn_jmp (dB) |        |        | 0.14   |        |       |
| vn_jmp (dB) |        |        | 0.16   |        |       |



CIFEX 2004 Data (cal/250ns+2.5/100ns-3.5/500ns: 53.0,50.0)

W2004-04-18-00-08-56 - PPMAG4, IRIG:1/0/2  
 UTC: 00:08:55.95 to 00:52:49.34, Dur: 2634s  
 TimeLngth: 2633.42s, TimeInt: 28ms (35.4pps)  
 TimeCor=-13.0s, PPS(min,max,med): 35,36,35  
 Timeint/DSPdiff(mn,min,mx):28,28,28/28,28,28  
 Prof: 459 to 93814, NumProf(r/t): 17571/93355  
 ProcTime/Recs: 00:08:55-00:17:11/0-17570  
 ADacqtime: 25ms; DRate: 198.4KB/s; Flags: 0, 0, 0  
 Pulse: 275ns, IFilt: 5.0MHz; ppPol: HH HV VV  
 TxPol: HHVV, PRF: 20 10 20 10 kHz, NoiseFlg:4,3  
 Range: Delay 75m, Spacing 15m, Gates 100  
 Ave. Pulses: 84, Rng/Prof Aspect@90m/s: 5.9

|             | Min    | Max    | Mean   | Std    | Varc% |
|-------------|--------|--------|--------|--------|-------|
| hhN (dB)    | -67.71 | -64.44 | -66.08 | -76.10 | 10.0  |
| vvN (dB)    | -67.96 | -64.56 | -66.19 | -76.15 | 10.1  |
| hhL (dB)    | -18.52 | 0.53   | -7.19  | -6.28  | 123.  |
| vvL (dB)    | -15.90 | 2.60   | -5.65  | -5.11  | 113.  |
| ppN (m/s)   | -12.04 | 12.38  | 0.01   | 4.15   |       |
| ppT (m/s)   | -95.08 | 97.82  | 0.05   | 32.82  |       |
| hh/vv (dB)  | NaN    | 47.73  | 28.49  | 37.49  | 794.  |
| vh/hh (dB)  | -99    | -99    | -99    | -99    | -99   |
| hv/vv (dB)  | -42.24 | -38.20 | -39.19 | -43.71 | 35.3  |
| hn_jmp (dB) |        |        | 0.14   |        |       |
| vn_jmp (dB) |        |        | 0.16   |        |       |



CIFEX 2004 Data (cal/250ns+2.5/100ns-3.5/500ns: 53.0,50.0)

W2004-04-18-00-08-56 - PPMAG4, IRIG:1/0/2  
 UTC: 00:08:55.95 to 00:52:49.34, Dur: 2634s  
 TimeLngth: 2633.42s, TimeInt: 28ms (35.4pps)  
 TimeCor=-13.0s, PPS(min,max,med): 35,36,35  
 Timeint/DSPdiff(mn,min,mx):28,28,28/28,28,28  
 Prof: 459 to 93814, NumProf(r/t): 17571/93355  
 ProcTime/Recs: 00:08:55-00:17:11/0-17570  
 ADacqtime: 25ms; DRate: 198.4KB/s; Flags: 0, 0, 0  
 Pulse: 275ns, IFilt: 5.0MHz; ppPol: HH HV VV  
 TxPol: HHVV, PRF: 20 10 20 10 kHz, NoiseFlg:4,3  
 Range: Delay 75m, Spacing 15m, Gates 100  
 Ave. Pulses: 84, Rng/Prof Aspect@90m/s: 5.9

|           | Min    | Max    | Mean   | Std    | Varc% |
|-----------|--------|--------|--------|--------|-------|
| hhN(dB)   | -67.71 | -64.44 | -66.08 | -76.10 | 10.0  |
| vvN(dB)   | -67.96 | -64.56 | -66.19 | -76.15 | 10.1  |
| hhL(dB)   | -18.52 | 0.53   | -7.19  | -6.28  | 123.  |
| vvL(dB)   | -15.90 | 2.60   | -5.65  | -5.11  | 113.  |
| ppN(m/s)  | -12.04 | 12.38  | 0.01   | 4.15   |       |
| ppT(m/s)  | -95.08 | 97.82  | 0.05   | 32.82  |       |
| hh/vv(dB) | NaN    | 47.73  | 28.49  | 37.49  | 794   |
| vh/hh(dB) | -99    | -99    | -99    | -99    | -99   |
| hv/vv(dB) | -42.24 | -38.20 | -39.19 | -43.71 | 35.3  |
| hnjmp(dB) |        |        | 0.14   |        |       |
| vnjmp(dB) |        |        | 0.16   |        |       |