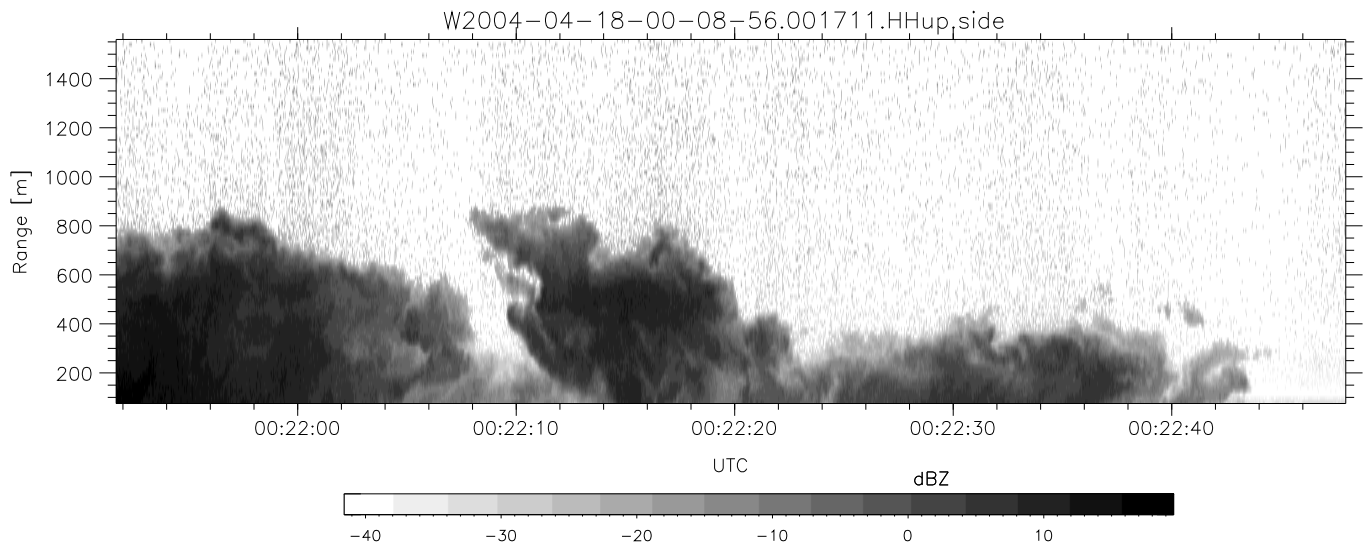
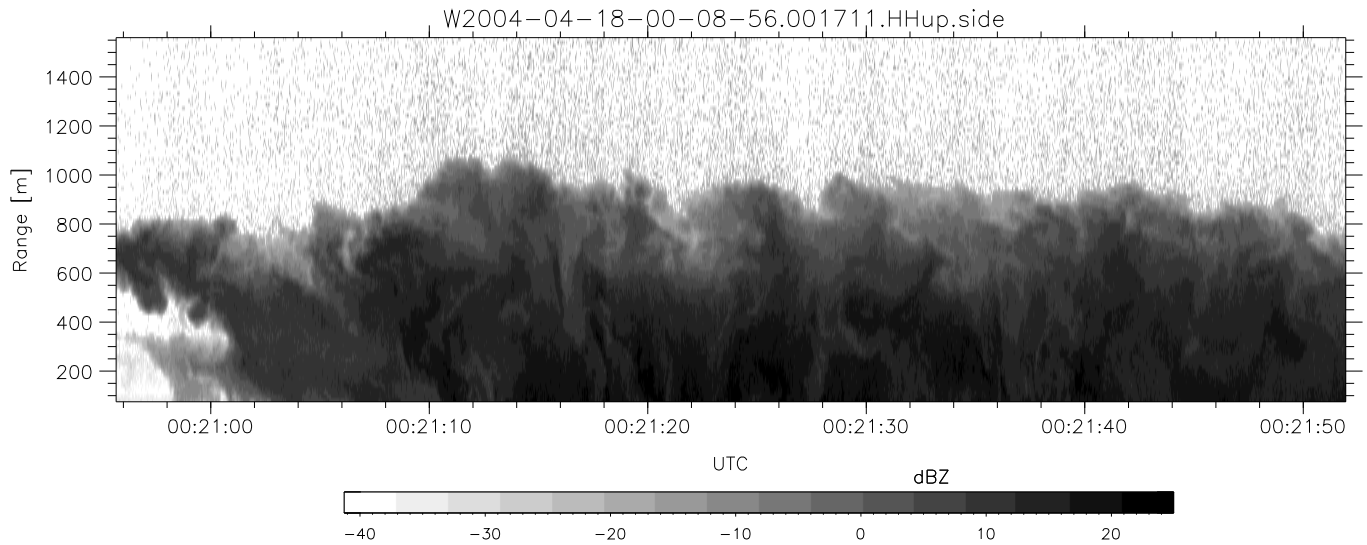
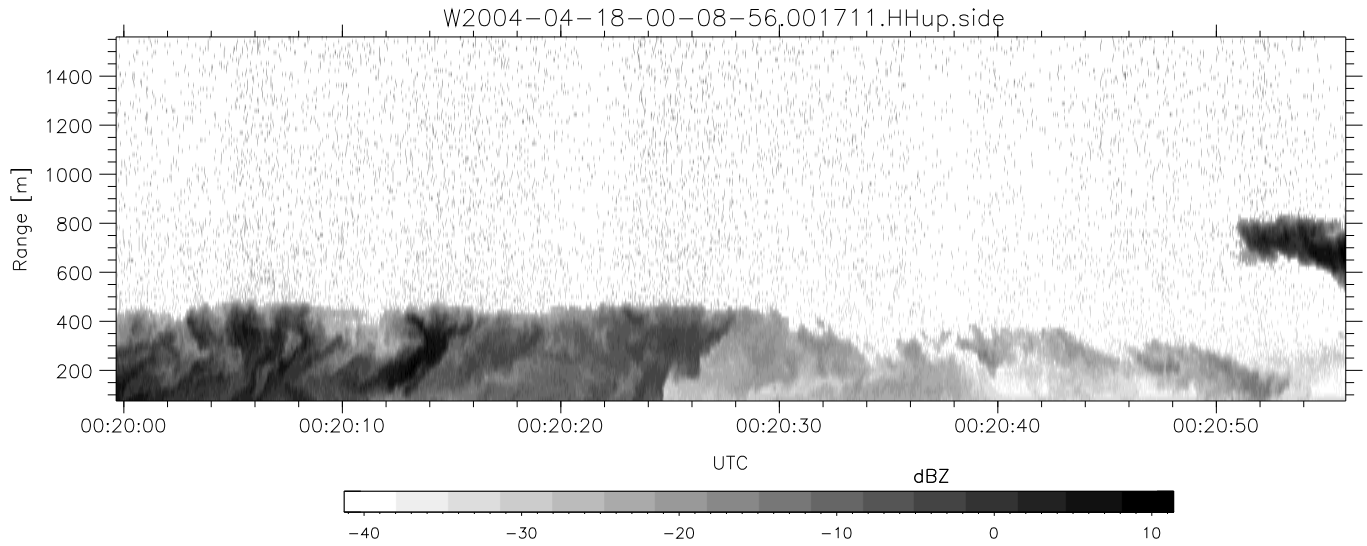


CIFEX 2004 Data (cal/250ns+2.5/100ns-3.5/500ns: 53.0,50.0)

W2004-04-18-00-08-56 - PPMAG4, IRIG:1/0/2
 UTC: 00:08:55.95 to 00:52:49.34, Dur: 2634s
 TimeLngth: 2633.33s, TimeInt: 28ms (35.5pps)
 TimeCor=-13.0s, PPS(min,max,med): 35,36,35
 Timeint/DSPdiff(mn,min,mx):28,28,34/28,28,28
 Prof: 459 to 93814, NumProf(r/t): 17571/93355
 ProcTime/Recs: 00:17:11-00:25:27/17571-35141
 ADacqtime: 25ms; DRate: 198.4KB/s; Flags: 0, 0, 0
 Pulse: 275ns, IFilt: 5.0MHz; ppPol: HH HV VV
 TxPol: HHVV, PRF: 20 10 20 10 kHz, Noiseflg:4,3
 Range: Delay 75m, Spacing 15m, Gates 100
 Ave. Pulses: 84, Rng/Prof Aspect@90m/s: 5.9

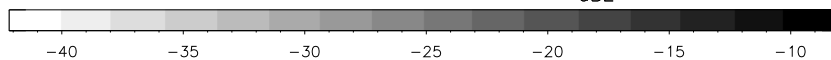
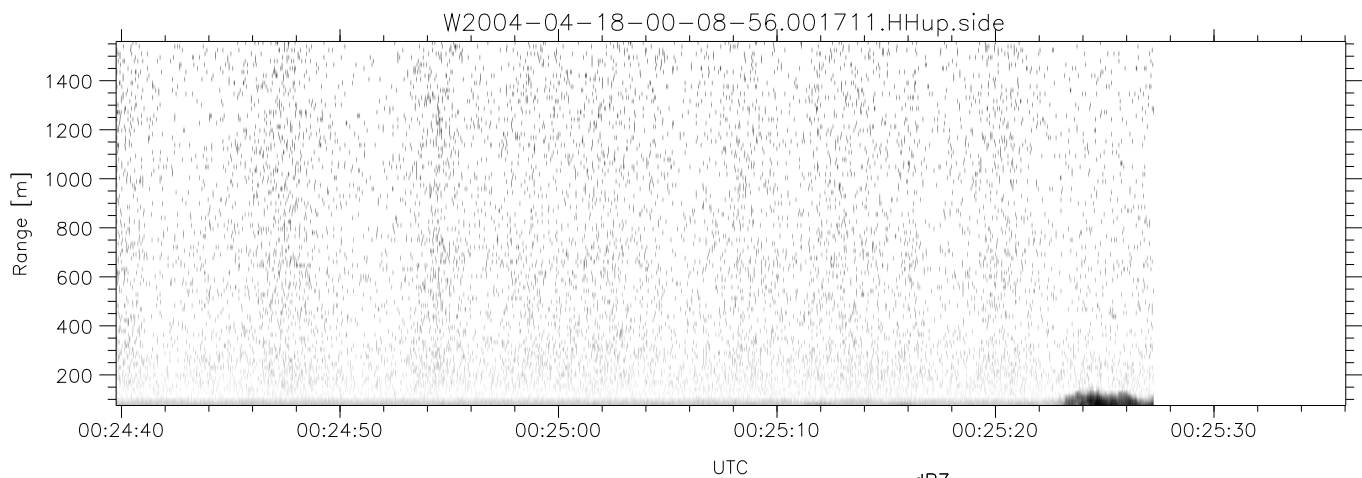
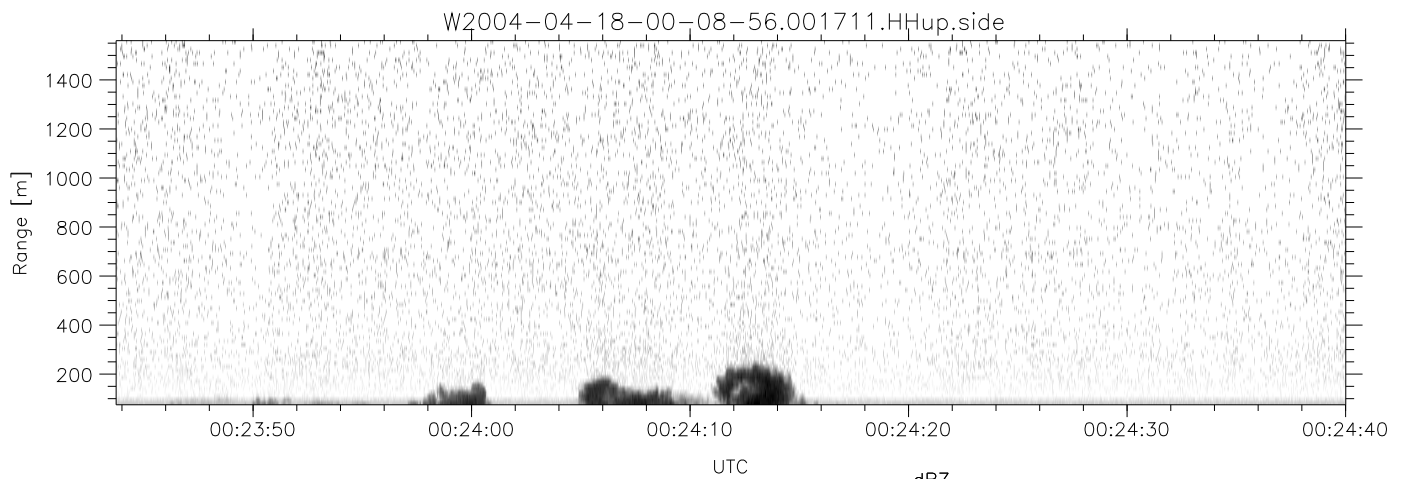
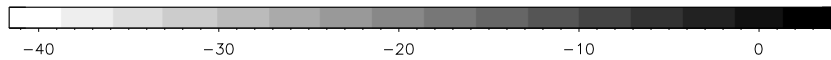
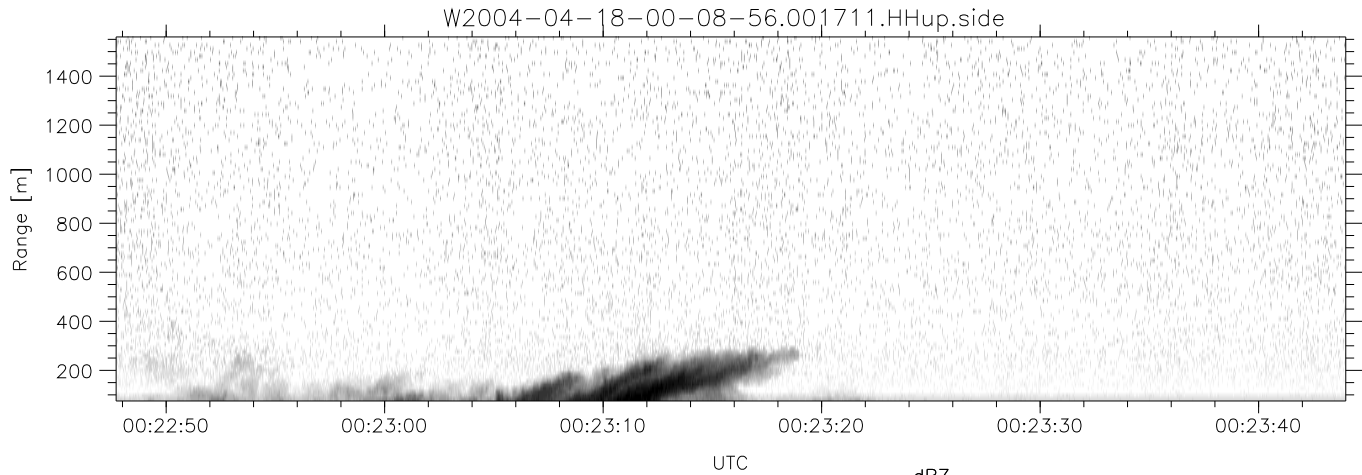
	Min	Max	Mean	Std	Varc%
hhN (dB)	-67.77	-64.24	-65.98	-76.03	9.9
vvN (dB)	-67.73	-64.36	-66.02	-75.90	10.3
hhL (dB)	-12.34	-4.53	-8.81	-15.74	20.3
vvL (dB)	-15.46	6.00	-7.44	-7.85	91.0
ppN (m/s)	-11.91	12.61	-0.05	4.14	
ppT (m/s)	-94.05	99.66	-0.41	32.70	
hh/vv (dB)	NaN	71.30	19.88	46.85	4973
vh/hh (dB)	NaN	-27.50	-39.63	-38.13	141.
hv/vv (dB)	NaN	-32.41	-47.00	-43.20	240.
hnjmp (dB)				-0.14	
vnjmp (dB)				-0.15	



CIFEX 2004 Data (cal/250ns+2.5/100ns-3.5/500ns: 53.0,50.0)

W2004-04-18-00-08-56 - PPMAG4, IRIG:1/0/2
 UTC: 00:08:55.95 to 00:52:49.34, Dur: 2634s
 TimeLngth: 2633.33s, TimeInt: 28ms (35.5pps)
 TimeCor=-13.0s, PPS(min,max,med): 35,36,35
 Timeint/DSPdiff(mn,min,mx):28,28,34/28,28,28
 Prof: 459 to 93814, NumProf(r/t): 17571/93355
 ProcTime/Recs: 00:17:11-00:25:27/17571-35141
 ADacqtime: 25ms; DRate: 198.4KB/s; Flags: 0, 0, 0
 Pulse: 275ns, IFfilt: 5.0MHz; ppPol: HH HV VV
 TxPol: HHVV, PRF: 20 10 20 10 kHz, Noiseflg:4,3
 Range: Delay 75m, Spacing 15m, Gates 100
 Ave. Pulses: 84, Rng/Prof Aspect@90m/s: 5.9

	Min	Max	Mean	Std	Varc%
hhN(dB)	-67.77	-64.24	-65.98	-76.03	9.9
vvN(dB)	-67.73	-64.36	-66.02	-75.90	10.3
hhL(dB)	-12.34	-4.53	-8.81	-15.74	20.3
vvL(dB)	-15.46	6.00	-7.44	-7.85	91.0
ppN(m/s)	-11.91	12.61	-0.05	4.14	
ppT(m/s)	-94.05	99.66	-0.41	32.70	
hh/vv(dB)	NaN	71.30	19.88	46.85	4973
vh/hh(dB)	NaN	-27.50	-39.63	-38.13	141.
hv/vv(dB)	NaN	-32.41	-47.00	-43.20	240.
hnjmp(dB)			-0.14		
vnjmp(dB)			-0.15		



CIFEX 2004 Data (cal/250ns+2.5/100ns-3.5/500ns: 53.0,50.0)

W2004-04-18-00-08-56 - PPMAG4, IRIG:1/0/2
 UTC: 00:08:55.95 to 00:52:49.34, Dur: 2634s
 TimeLngth: 2633.33s, TimeInt: 28ms (35.5pps)
 TimeCor=-13.0s, PPS(min,max,med): 35,36,35
 Timeint/DSPdiff(mn,min,mx):28,28,34/28,28,28
 Prof: 459 to 93814, NumProf(r/t): 17571/93355
 ProcTime/Recs: 00:17:11-00:25:27/17571-35141
 ADacqtime: 25ms; DRate: 198.4KB/s; Flags: 0, 0, 0
 Pulse: 275ns, IFilt: 5.0MHz; ppPol: HH HV VV
 TxPol: HHVV, PRF: 20 10 20 10 kHz, Noiseflg:4,3
 Range: Delay 75m, Spacing 15m, Gates 100
 Ave. Pulses: 84, Rng/Prof Aspect@90m/s: 5.9

	Min	Max	Mean	Std	Varc%
hhN (dB)	-67.77	-64.24	-65.98	-76.03	9.9
vvN (dB)	-67.73	-64.36	-66.02	-75.90	10.3
hhL (dB)	-12.34	-4.53	-8.81	-15.74	20.3
vvL (dB)	-15.46	6.00	-7.44	-7.85	91.0
ppN (m/s)	-11.91	12.61	-0.05	4.14	
ppT (m/s)	-94.05	99.66	-0.41	32.70	
hh/vv (dB)	NaN	71.30	19.88	46.85	4973
vh/hh (dB)	NaN	-27.50	-39.63	-38.13	141.
hv/vv (dB)	NaN	-32.41	-47.00	-43.20	240.
hh_jmp (dB)				-0.14	
vv_jmp (dB)				-0.15	