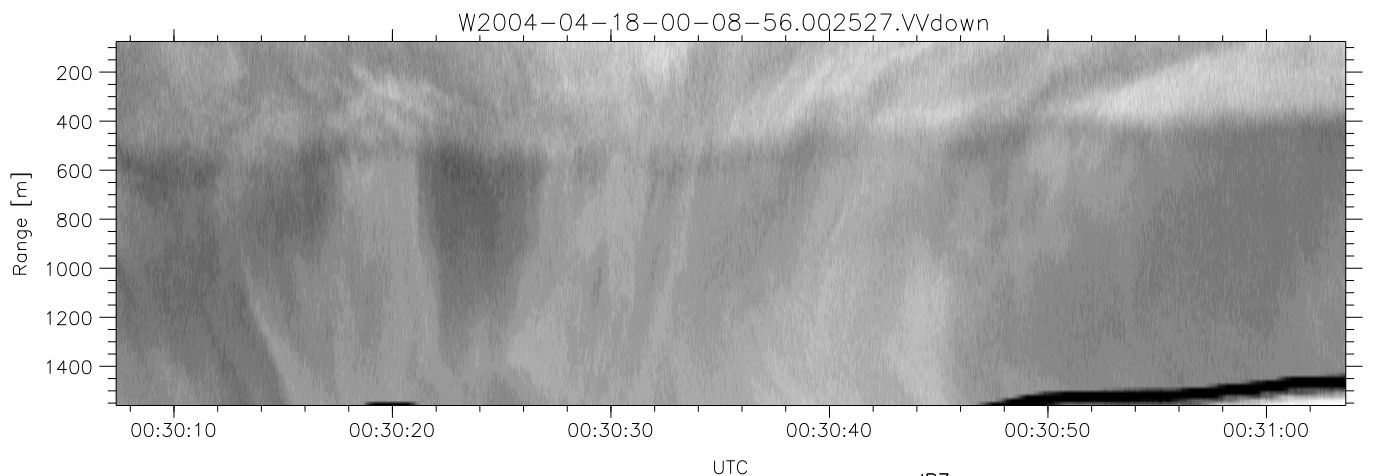
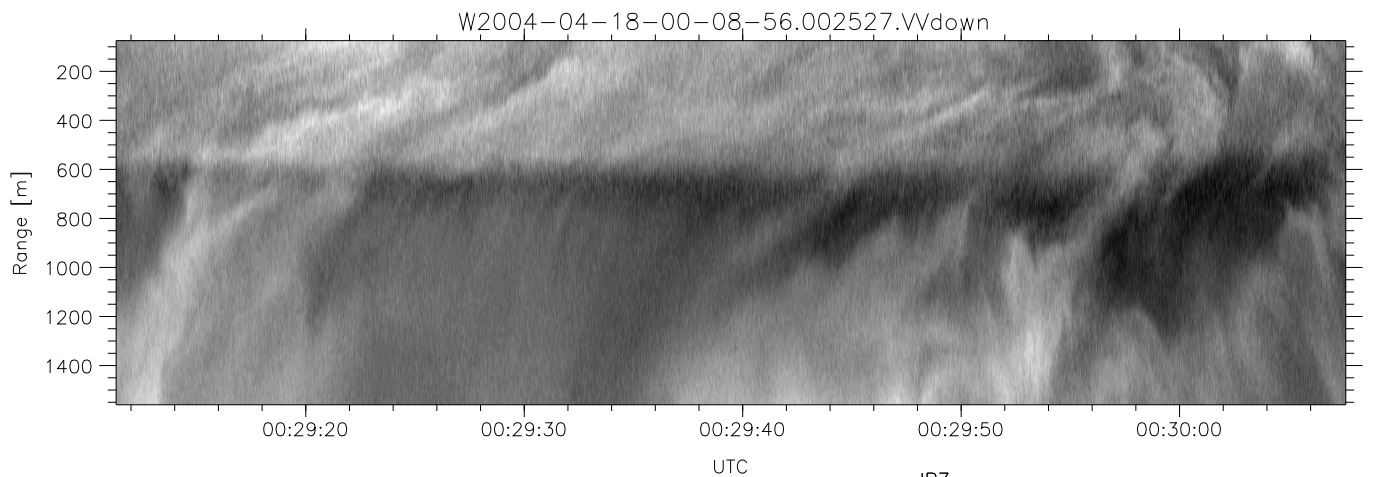
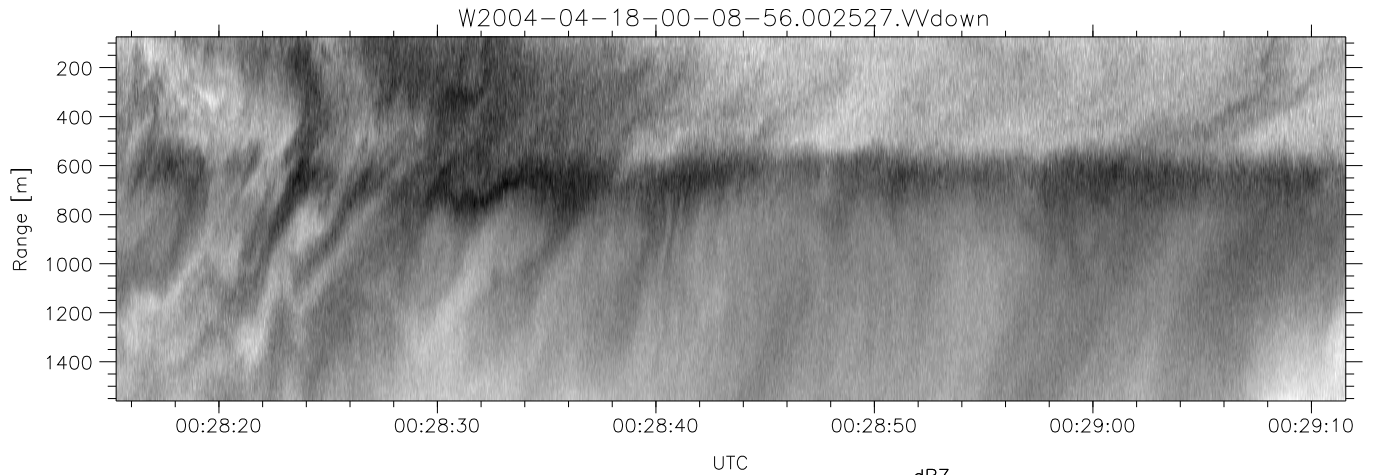


CIFEX 2004 Data (cal/250ns+2.5/100ns-3.5/500ns: 53.0,50.0)

W2004-04-18-00-08-56 - PPMAG4, IRIG:1/0/2
 UTC: 00:08:55.95 to 00:52:49.34, Dur: 2634s
 TimeLngth: 2633.42s, TimeInt: 28ms (35.4pps)
 TimeCor=-13.0s, PPS(min,max,med): 35,36,35
 Timeint/DSPdiff(mn,min,mx):28,28,42/28,28,42
 Prof: 459 to 93814, NumProf(r/t): 17571/93355
 ProcTime/Recs: 00:25:27-00:33:42/35142-52712
 ADacqtime: 25ms; DRate: 198.4KB/s; Flags: 0, 0, 0
 Pulse: 275ns, IFfilt: 5.0MHz; ppPol: HH HV VV
 TxPol: HHVV, PRF: 20 10 20 10 kHz, Noiseflg:2,3
 Range: Delay 75m, Spacing 15m, Gates 100
 Ave. Pulses: 84, Rng/Prof Aspect@90m/s: 5.9

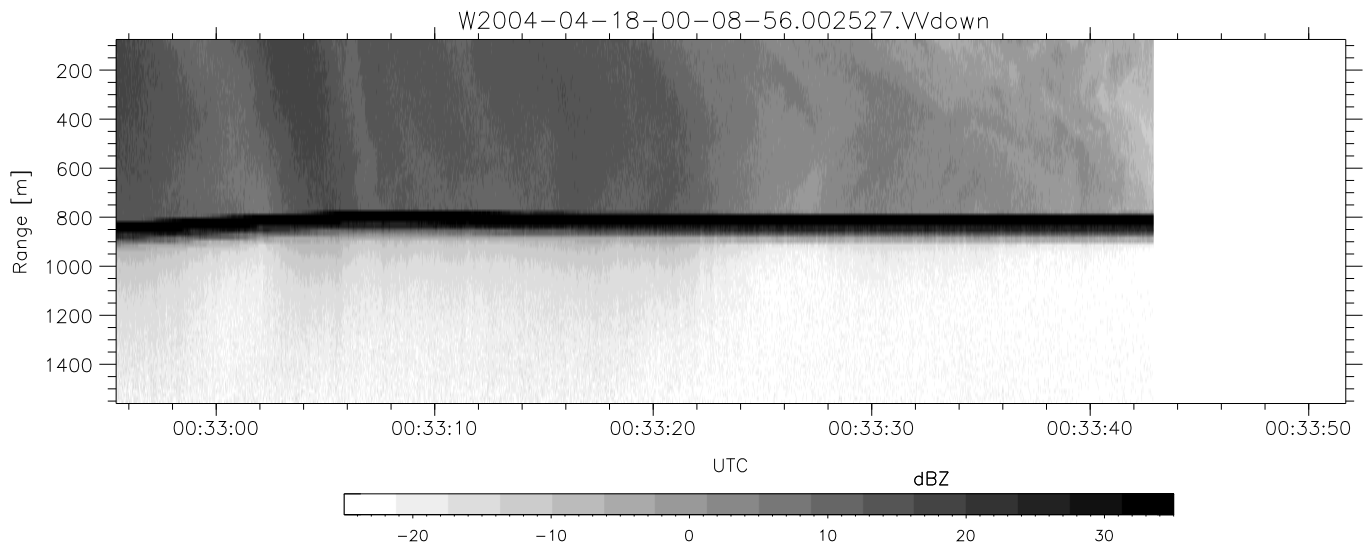
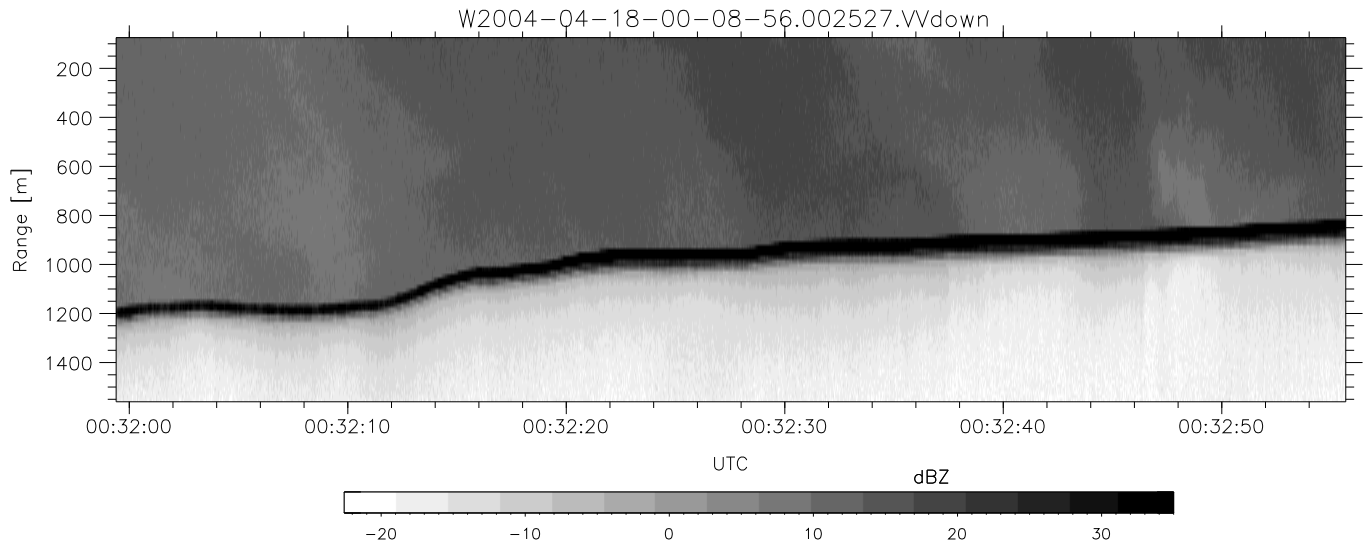
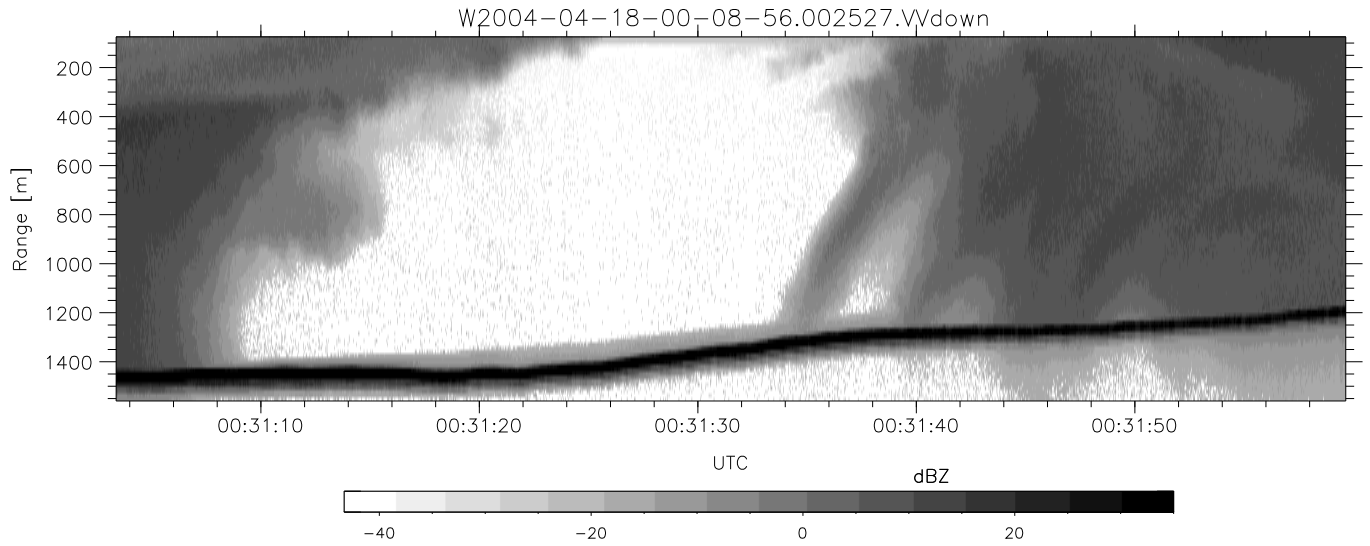
	Min	Max	Mean	Std	Varc%
hhN(dB)	-67.75	-64.22	-65.91	-75.90	10.0
vvN(dB)	-67.74	-64.23	-65.87	-75.80	10.2
hhL(dB)	-24.09	3.06	-3.26	-2.17	128.
vvL(dB)	-16.56	6.00	1.92	2.50	114.
ppN(m/s)	-12.86	12.85	-0.01	4.14	
ppT(m/s)	-101.6	101.55	-0.05	32.73	
hh/vv(dB)	NaN	76.25	14.97	49.50	2837
vh/hh(dB)	NaN	-26.01	-38.11	-37.27	121.
hv/vv(dB)	NaN	-32.58	-49.66	-43.72	392.
hnjmp(dB)			0.14		
vnjmp(dB)			0.15		



CIFEX 2004 Data (cal/250ns+2.5/100ns-3.5/500ns: 53.0,50.0)

W2004-04-18-00-08-56 - PPMAG4, IRIG:1/0/2
 UTC: 00:08:55.95 to 00:52:49.34, Dur: 2634s
 TimeLngth: 2633.42s, TimeInt: 28ms (35.4pps)
 TimeCor=-13.0s, PPS(min,max,med): 35,36,35
 Timeint/DSPdiff(mn,min,mx):28,28,42/28,28,42
 Prof: 459 to 93814, NumProf(r/t): 17571/93355
 ProcTime/Recs: 00:25:27-00:33:42/35142-52712
 ADacqtime: 25ms; DRate: 198.4KB/s; Flags: 0, 0, 0
 Pulse: 275ns, IFfilt: 5.0MHz; ppPol: HH HV VV
 TxPol: HHVV, PRF: 20 10 20 10 kHz, Noiseflg:2,3
 Range: Delay 75m, Spacing 15m, Gates 100
 Ave. Pulses: 84, Rng/Prof Aspect@90m/s: 5.9

	Min	Max	Mean	Std	Varc%
hhN (dB)	-67.75	-64.22	-65.91	-75.90	10.0
vvN (dB)	-67.74	-64.23	-65.87	-75.80	10.2
hhL (dB)	-24.09	3.06	-3.26	-2.17	128.
vvL (dB)	-16.56	6.00	1.92	2.50	114.
ppN (m/s)	-12.86	12.85	-0.01	4.14	
ppT (m/s)	-101.6	101.55	-0.05	32.73	
hh/vv (dB)	NaN	76.25	14.97	49.50	2837
vh/hh (dB)	NaN	-26.01	-38.11	-37.27	121.
hv/vv (dB)	NaN	-32.58	-49.66	-43.72	392.
hnjmp (dB)			0.14		
vnjmp (dB)			0.15		



CIFEX 2004 Data (cal/250ns+2.5/100ns-3.5/500ns: 53.0,50.0)

W2004-04-18-00-08-56 - PPMAG4, IRIG:1/0/2
 UTC: 00:08:55.95 to 00:52:49.34, Dur: 2634s
 TimeLngth: 2633.42s, TimeInt: 28ms (35.4pps)
 TimeCor=-13.0s, PPS(min,max,med): 35,36,35
 Timeint/DSPdiff(mn,min,mx):28,28,42/28,28,42
 Prof: 459 to 93814, NumProf(r/t): 17571/93355
 ProcTime/Recs: 00:25:27-00:33:42/35142-52712
 ADacqtime: 25ms; DRate: 198.4KB/s; Flags: 0, 0, 0
 Pulse: 275ns, IFfilt: 5.0MHz; ppPol: HH HV VV
 TxPol: HHVV, PRF: 20 10 20 10 kHz, Noiseflg:2,3
 Range: Delay 75m, Spacing 15m, Gates 100
 Ave. Pulses: 84, Rng/Prof Aspect@90m/s: 5.9

	Min	Max	Mean	Std	Varc%
hhN(dB)	-67.75	-64.22	-65.91	-75.90	10.0
vvN(dB)	-67.74	-64.23	-65.87	-75.80	10.2
hhL(dB)	-24.09	3.06	-3.26	-2.17	128.
vvL(dB)	-16.56	6.00	1.92	2.50	114.
ppN(m/s)	-12.86	12.85	-0.01	4.14	
ppT(m/s)	-101.6	101.55	-0.05	32.73	
hh/vv(dB)	NaN	76.25	14.97	49.50	2837
vh/hh(dB)	NaN	-26.01	-38.11	-37.27	121.
hv/vv(dB)	NaN	-32.58	-49.66	-43.72	392.
hnjmp(dB)			0.14		
vnjmp(dB)			0.15		