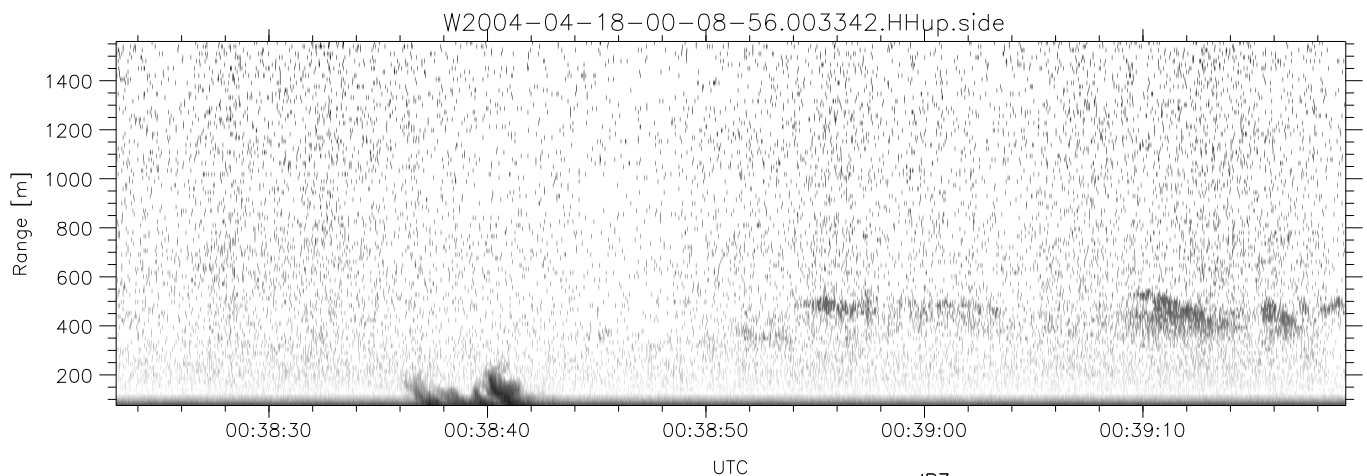
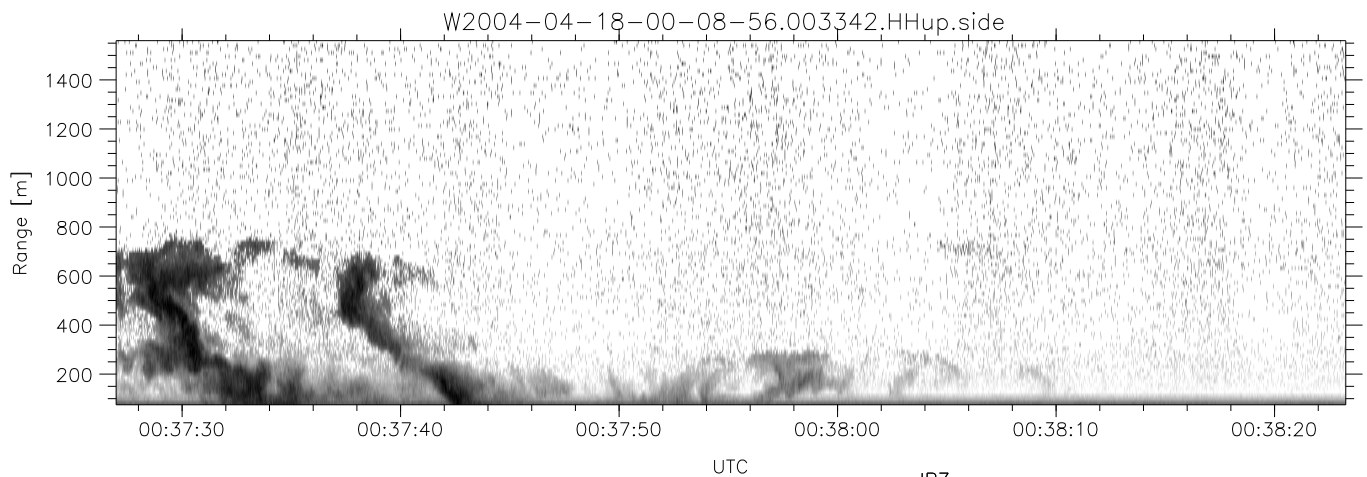
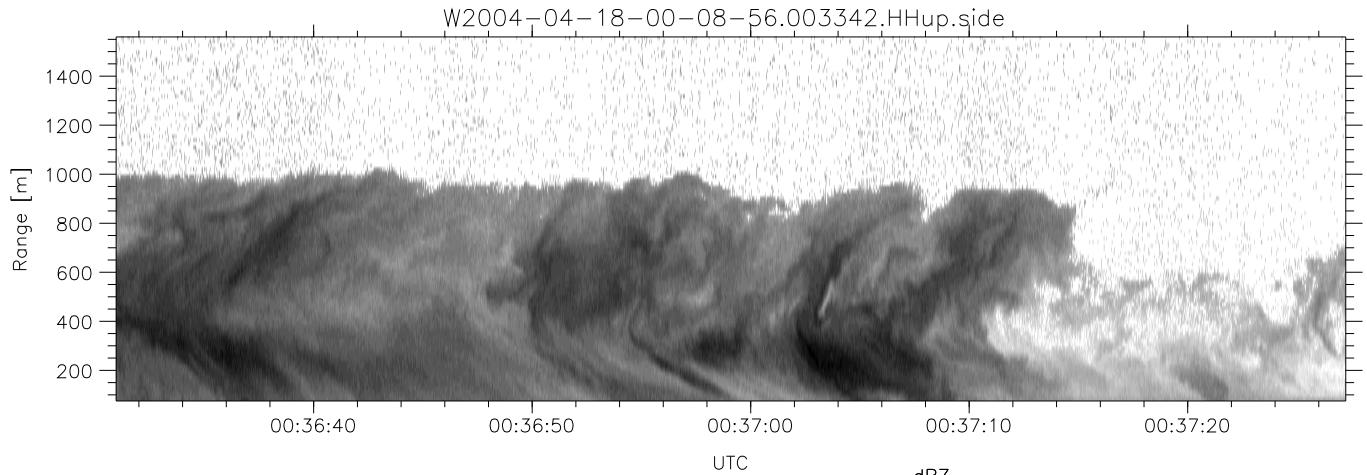


CIFEX 2004 Data (cal/250ns+2.5/100ns-3.5/500ns: 53.0,50.0)

W2004-04-18-00-08-56 - PPMAG4, IRIG:1/0/2
 UTC: 00:08:55.95 to 00:52:49.34, Dur: 2634s
 TimeLngth: 2633.33s, TimeInt: 28ms (35.5pps)
 TimeCor=-13.0s, PPS(min,max,med): 35,36,35
 Timeint/DSPdiff(mn,min,mx):28,28,30/28,28,30
 Prof: 459 to 93814, NumProf(r/t): 17571/93355
 ProcTime/Recs: 00:33:42-00:41:58/52713-70283
 ADacqtime: 25ms; DRate: 198.4KB/s; Flags: 0, 0, 0
 Pulse: 275ns, IFfilt: 5.0MHz; ppPol: HH HV VV
 TxPol: HHVV, PRF: 20 10 20 10 kHz, Noiseflg:2,2
 Range: Delay 75m, Spacing 15m, Gates 100
 Ave. Pulses: 84, Rng/Prof Aspect@90m/s: 5.9

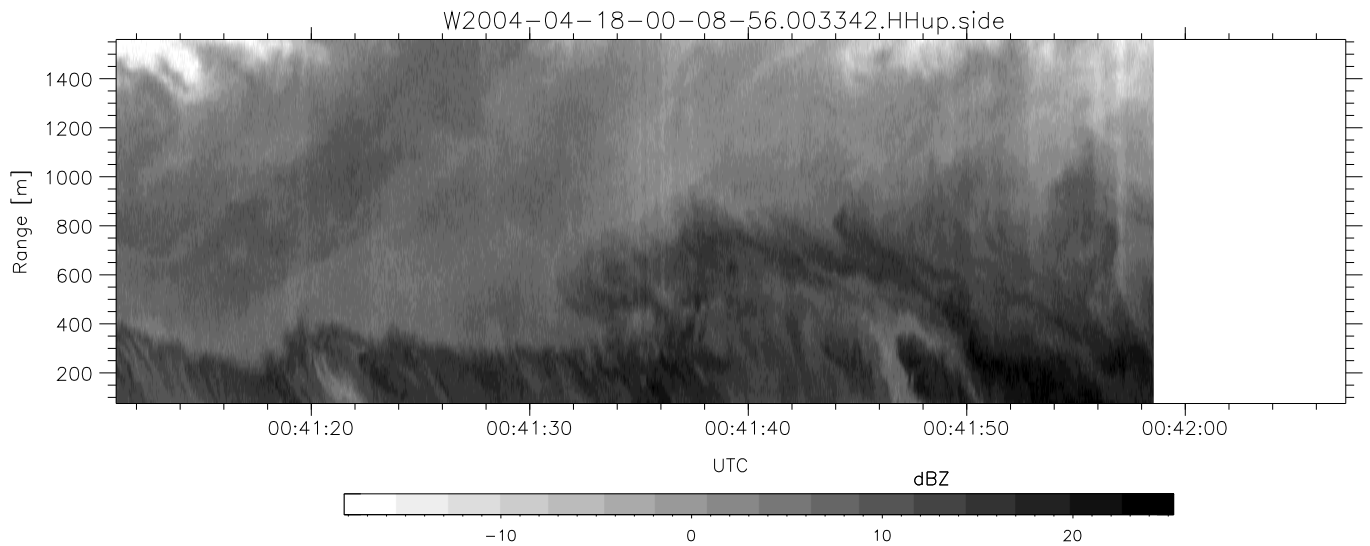
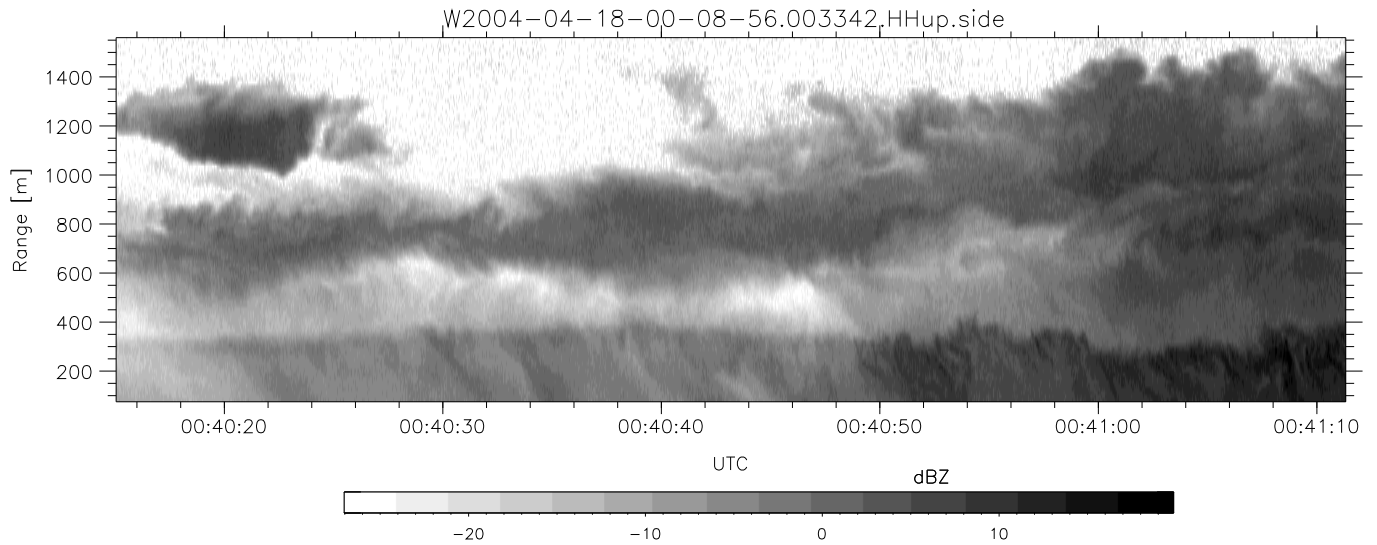
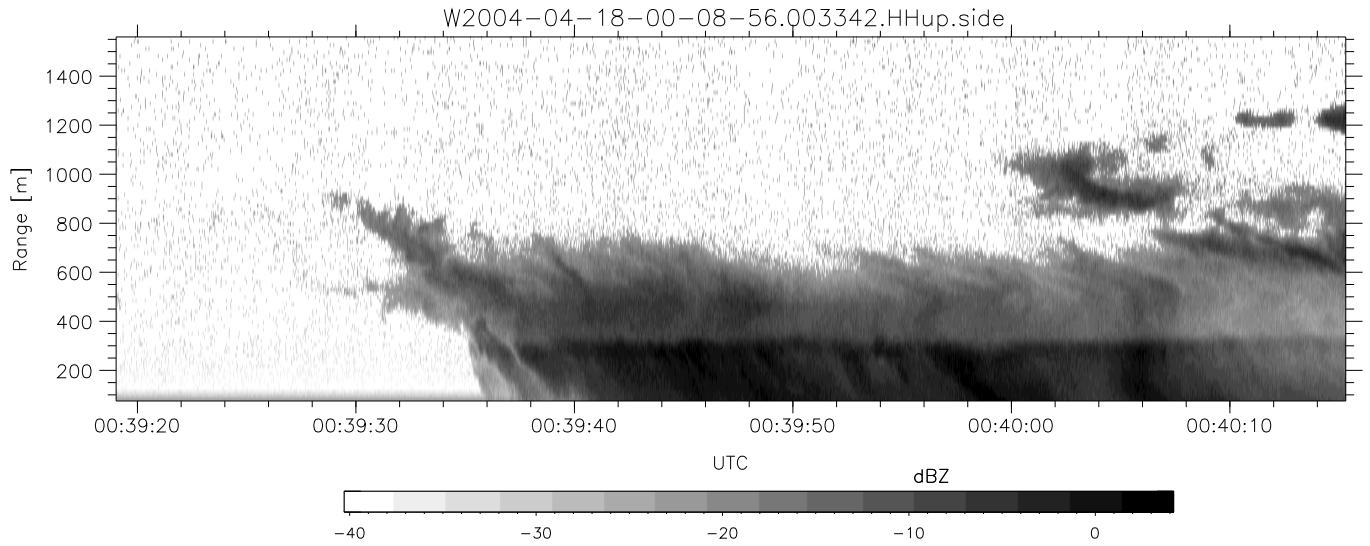
	Min	Max	Mean	Std	Varc%
hhN(dB)	-67.87	-64.22	-65.86	-75.86	10.0
vvN(dB)	-68.19	-64.34	-65.96	-75.93	10.1
hhL(dB)	-1.23	3.14	1.67	-6.83	14.1
vvL(dB)	0.50	6.00	5.98	-9.48	2.8
ppN(m/s)	-12.81	11.98	-0.05	4.12	
ppT(m/s)	-101.1	94.62	-0.41	32.55	
hh/vv(dB)	NaN	63.18	13.68	39.28	3630
vh/hh(dB)	NaN	-1.68	-26.65	-16.88	948.
hv/vv(dB)	NaN	-25.67	-48.33	-43.47	306.
hnjmp(dB)			-0.14		
vnjmp(dB)			-0.15		



CIFEX 2004 Data (cal/250ns+2.5/100ns-3.5/500ns: 53.0,50.0)

W2004-04-18-00-08-56 - PPMAG4, IRIG:1/0/2
 UTC: 00:08:55.95 to 00:52:49.34, Dur: 2634s
 TimeLngth: 2633.33s, TimeInt: 28ms (35.5pps)
 TimeCor=-13.0s, PPS(min,max,med): 35,36,35
 Timeint/DSPdiff(mn,min,mx):28,28,30/28,28,30
 Prof: 459 to 93814, NumProf(r/t): 17571/93355
 ProcTime/Recs: 00:33:42-00:41:58/52713-70283
 ADacqtime: 25ms; DRate: 198.4KB/s; Flags: 0, 0, 0
 Pulse: 275ns, IFilt: 5.0MHz; ppPol: HH HV VV
 TxPol: HHV, PRF: 20 10 20 10 kHz, NoiseFlg:2,2
 Range: Delay 75m, Spacing 15m, Gates 100
 Ave. Pulses: 84, Rng/Prof Aspect@90m/s: 5.9

	Min	Max	Mean	Std	Varc%
hhN(dB)	-67.87	-64.22	-65.86	-75.86	10.0
vvN(dB)	-68.19	-64.34	-65.96	-75.93	10.1
hhL(dB)	-1.23	3.14	1.67	-6.83	14.1
vvL(dB)	0.50	6.00	5.98	-9.48	2.8
ppN(m/s)	-12.81	11.98	-0.05	4.12	
ppT(m/s)	-101.1	94.62	-0.41	32.55	
hh/vv(dB)	NaN	63.18	13.68	39.28	3630
vh/hh(dB)	NaN	-1.68	-26.65	-16.88	948.
hv/vv(dB)	NaN	-25.67	-48.33	-43.47	306.
hnjmp(dB)			-0.14		
vnjmp(dB)			-0.15		



CIFEX 2004 Data (cal/250ns+2.5/100ns-3.5/500ns: 53.0,50.0)

W2004-04-18-00-08-56 - PPMAG4, IRIG:1/0/2
 UTC: 00:08:55.95 to 00:52:49.34, Dur: 2634s
 TimeLngth: 2633.33s, TimeInt: 28ms (35.5pps)
 TimeCor=-13.0s, PPS(min,max,med): 35,36,35
 Timeint/DSPdiff(mn,min,mx):28,28,30/28,28,30
 Prof: 459 to 93814, NumProf(r/t): 17571/93355
 ProcTime/Recs: 00:33:42-00:41:58/52713-70283
 ADacqtime: 25ms; DRate: 198.4KB/s; Flags: 0, 0, 0
 Pulse: 275ns, IFilt: 5.0MHz; ppPol: HH HV VV
 TxPol: HHVV, PRF: 20 10 20 10 kHz, NoiseFlg:2,2
 Range: Delay 75m, Spacing 15m, Gates 100
 Ave. Pulses: 84, Rng/Prof Aspect@90m/s: 5.9

	Min	Max	Mean	Std	Varc%
hhN (dB)	-67.87	-64.22	-65.86	-75.86	10.0
vvN (dB)	-68.19	-64.34	-65.96	-75.93	10.1
hhL (dB)	-1.23	3.14	1.67	-6.83	14.1
vvL (dB)	0.50	6.00	5.98	-9.48	2.8
ppN (m/s)	-12.81	11.98	-0.05	4.12	
ppT (m/s)	-101.1	94.62	-0.41	32.55	
hh/vv (dB)	NaN	63.18	13.68	39.28	3630
vh/hh (dB)	NaN	-1.68	-26.65	-16.88	948.
hv/vv (dB)	NaN	-25.67	-48.33	-43.47	306.
hnjmp (dB)			-0.14		
vnjmp (dB)			-0.15		