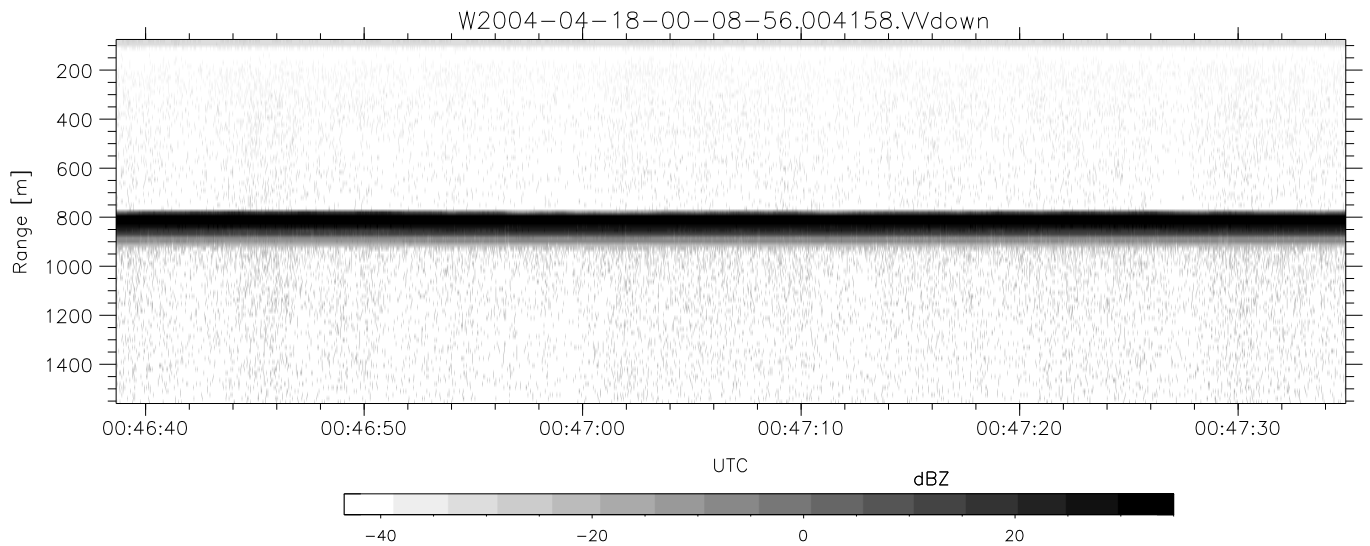
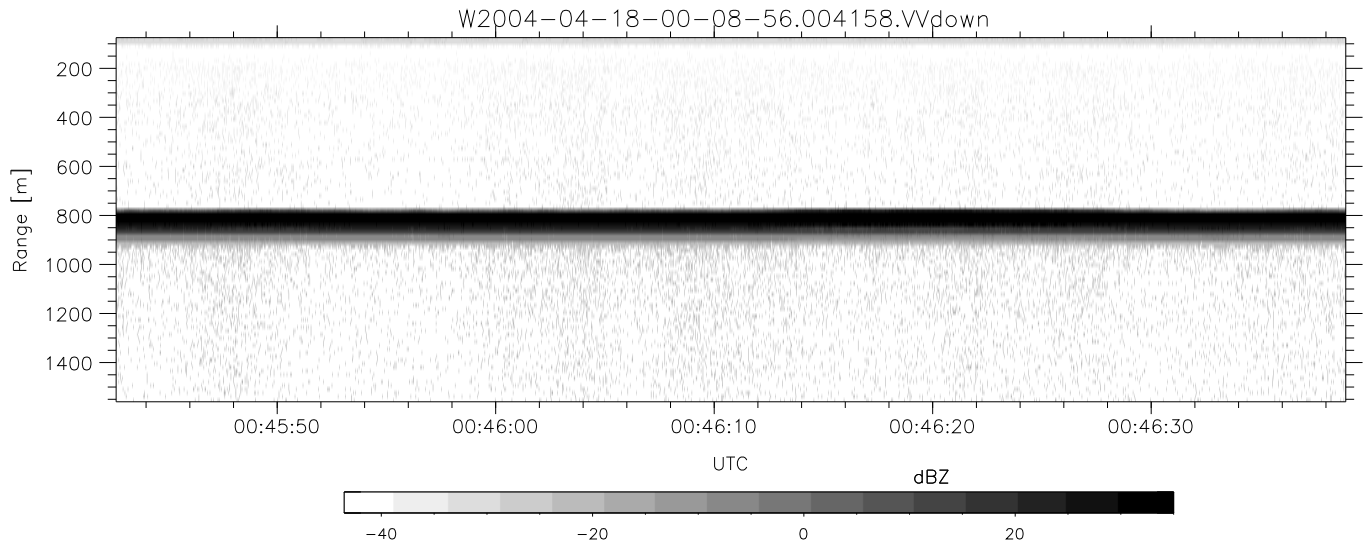
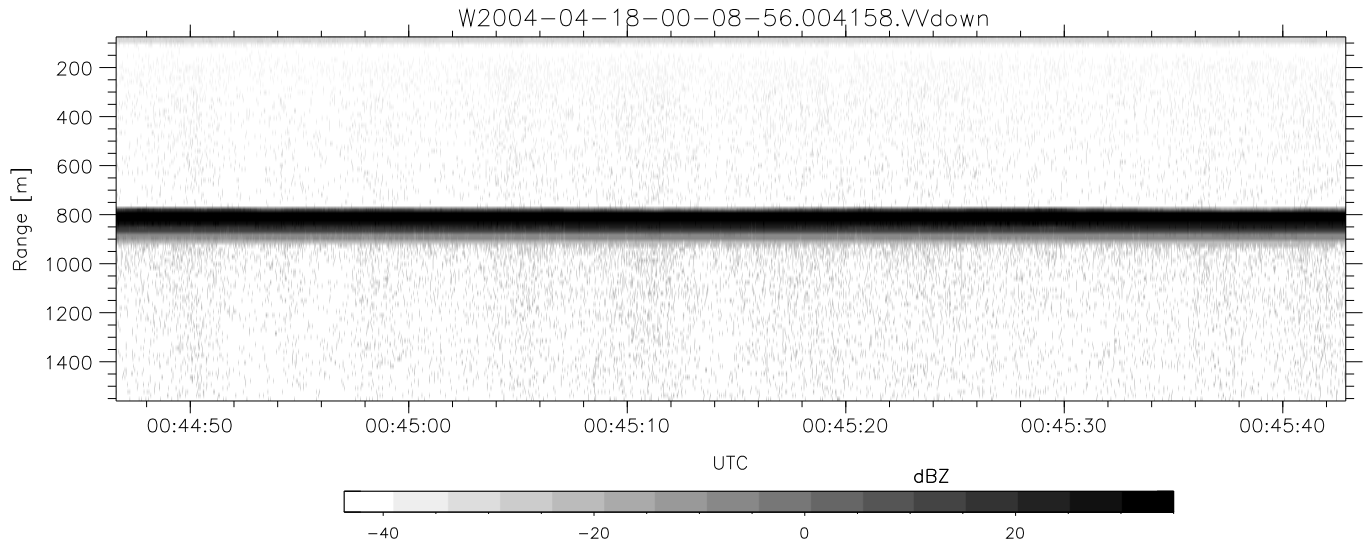


CIFEX 2004 Data (cal/250ns+2.5/100ns-3.5/500ns: 53.0,50.0)

W2004-04-18-00-08-56 - PPMAG4, IRIG:1/0/2  
 UTC: 00:08:55.95 to 00:52:49.34, Dur: 2634s  
 TimeLngth: 2633.42s, TimeInt: 28ms (35.4pps)  
 TimeCor=-13.0s, PPS(min,max,med): 35,36,35  
 Timeint/DSPdiff(mn,min,mx):28,28,28/28,28,28  
 Prof: 459 to 93814, NumProf(r/t): 17571/93355  
 ProcTime/Recs: 00:41:58-00:50:14/70284-87854  
 ADacqtime: 25ms; DRate: 198.4KB/s; Flags: 0, 0, 0  
 Pulse: 275ns, IFilt: 5.0MHz; ppPol: HH HV VV  
 TxPol: HHV, PRF: 20 10 20 10 kHz, NoiseFlg:4,2  
 Range: Delay 75m, Spacing 15m, Gates 100  
 Ave. Pulses: 84, Rng/Prof Aspect@90m/s: 5.9

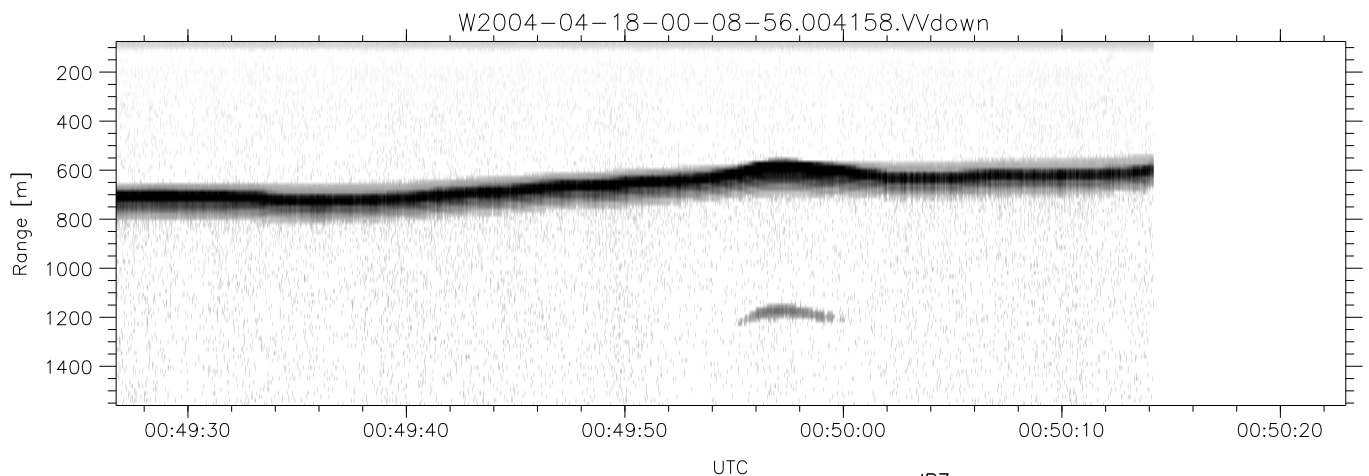
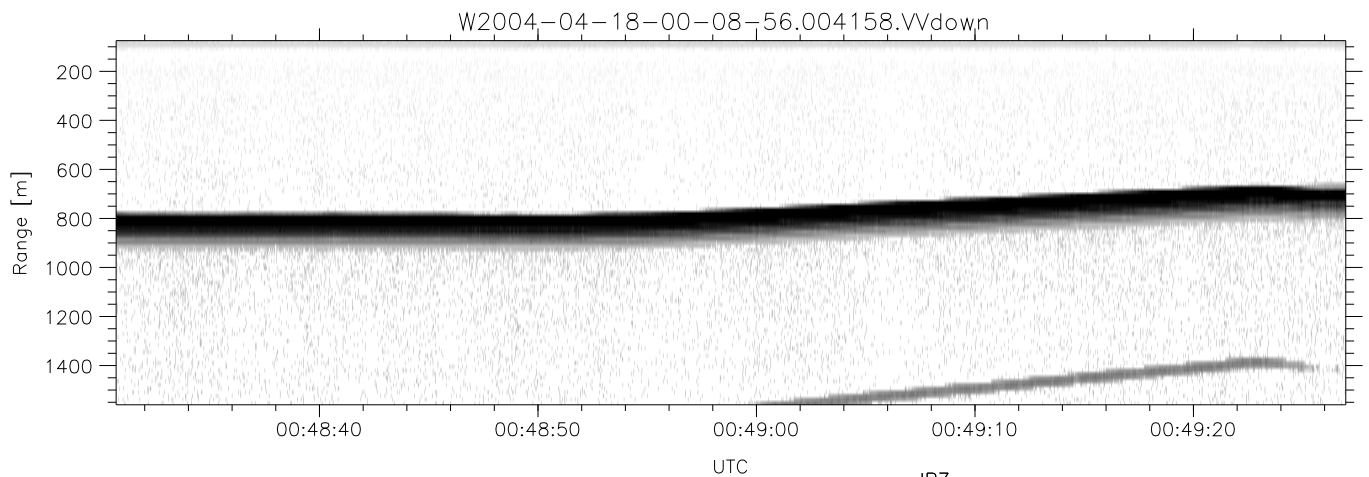
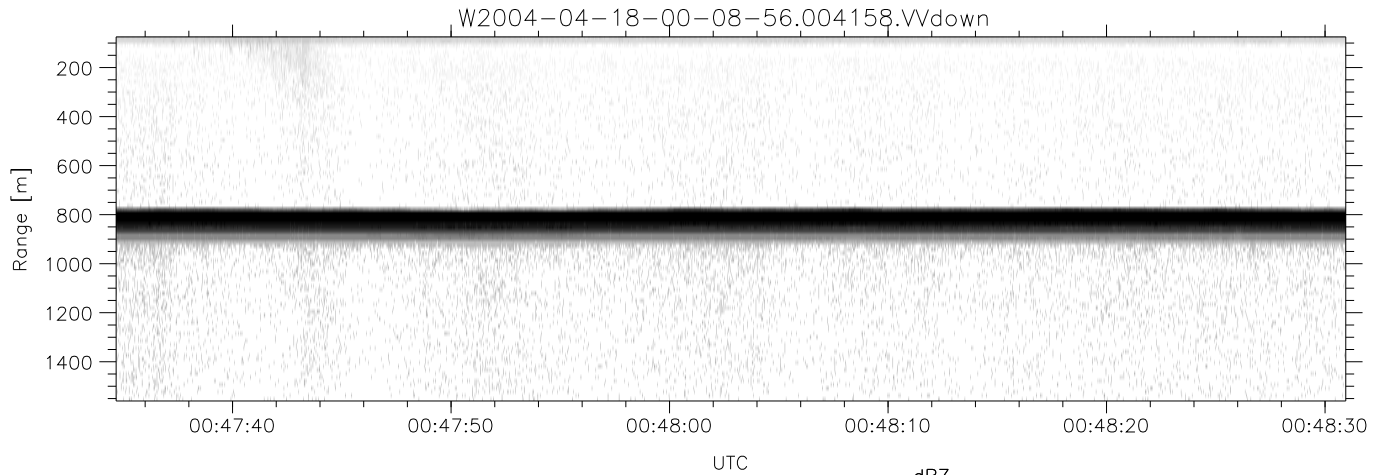
	Min	Max	Mean	Std	Varc%
hhN (dB)	-67.84	-64.33	-65.95	-75.92	10.1
vvN (dB)	-67.75	-64.58	-66.02	-76.00	10.0
hhL (dB)	-9.25	2.72	-0.42	-5.34	32.2
vvL (dB)	0.32	6.00	5.94	-7.18	4.9
ppN (m/s)	-12.60	12.93	-0.00	4.13	
ppT (m/s)	-99.54	102.17	-0.00	32.67	
hh/vv (dB)	NaN	52.84	14.05	31.58	5673
vh/hh (dB)	NaN	-3.73	-26.66	-18.45	661.
hv/vv (dB)	NaN	-31.50	-51.85	-45.02	481.
hnjmp (dB)			0.15		
vnjmp (dB)			0.15		



CIFEX 2004 Data (cal/250ns+2.5/100ns-3.5/500ns: 53.0,50.0)

W2004-04-18-00-08-56 - PPMAG4, IRIG:1/0/2  
 UTC: 00:08:55.95 to 00:52:49.34, Dur: 2634s  
 TimeLngth: 2633.42s, TimeInt: 28ms (35.4pps)  
 TimeCor=-13.0s, PPS(min,max,med): 35,36,35  
 Timeint/DSPdiff(mn,min,mx):28,28,28/28,28,28  
 Prof: 459 to 93814, NumProf(r/t): 17571/93355  
 ProcTime/Recs: 00:41:58-00:50:14/70284-87854  
 ADacqtime: 25ms; DRate: 198.4KB/s; Flags: 0, 0, 0  
 Pulse: 275ns, IFfilt: 5.0MHz; ppPol: HH HV VV  
 TxPol: HHVV, PRF: 20 10 20 10 kHz, Noiseflg:4,2  
 Range: Delay 75m, Spacing 15m, Gates 100  
 Ave. Pulses: 84, Rng/Prof Aspect@90m/s: 5.9

	Min	Max	Mean	Std	Varc%
hhN (dB)	-67.84	-64.33	-65.95	-75.92	10.1
vvN (dB)	-67.75	-64.58	-66.02	-76.00	10.0
hhL (dB)	-9.25	2.72	-0.42	-5.34	32.2
vvL (dB)	0.32	6.00	5.94	-7.18	4.9
ppN (m/s)	-12.60	12.93	-0.00	4.13	
ppT (m/s)	-99.54	102.17	-0.00	32.67	
hh/vv (dB)	NaN	52.84	14.05	31.58	5673
vh/hh (dB)	NaN	-3.73	-26.66	-18.45	661.
hv/vv (dB)	NaN	-31.50	-51.85	-45.02	481.
hnjmp (dB)			0.15		
vnjmp (dB)			0.15		



CIFEX 2004 Data (cal/250ns+2.5/100ns-3.5/500ns: 53.0,50.0)

W2004-04-18-00-08-56 - PPMAG4, IRIG:1/0/2  
 UTC: 00:08:55.95 to 00:52:49.34, Dur: 2634s  
 TimeLngth: 2633.42s, TimeInt: 28ms (35.4pps)  
 TimeCor=-13.0s, PPS(min,max,med): 35,36,35  
 Timeint/DSPdiff(mn,min,mx):28,28,28/28,28,28  
 Prof: 459 to 93814, NumProf(r/t): 17571/93355  
 ProcTime/Recs: 00:41:58-00:50:14/70284-87854  
 ADacqtime: 25ms; DRate: 198.4KB/s; Flags: 0, 0, 0  
 Pulse: 275ns, IFfilt: 5.0MHz; ppPol: HH HV VV  
 TxPol: HHVV, PRF: 20 10 20 10 kHz, Noiseflg:4,2  
 Range: Delay 75m, Spacing 15m, Gates 100  
 Ave. Pulses: 84, Rng/Prof Aspect@90m/s: 5.9

	Min	Max	Mean	Std	Varc%
hhN (dB)	-67.84	-64.33	-65.95	-75.92	10.1
vvN (dB)	-67.75	-64.58	-66.02	-76.00	10.0
hhL (dB)	-9.25	2.72	-0.42	-5.34	32.2
vvL (dB)	0.32	6.00	5.94	-7.18	4.9
ppN (m/s)	-12.60	12.93	-0.00	4.13	
ppT (m/s)	-99.54	102.17	-0.00	32.67	
hh/vv (dB)	NaN	52.84	14.05	31.58	5673
vh/hh (dB)	NaN	-3.73	-26.66	-18.45	661.
hv/vv (dB)	NaN	-31.50	-51.85	-45.02	481.
hnjmp (dB)			0.15		
vnjmp (dB)			0.15		