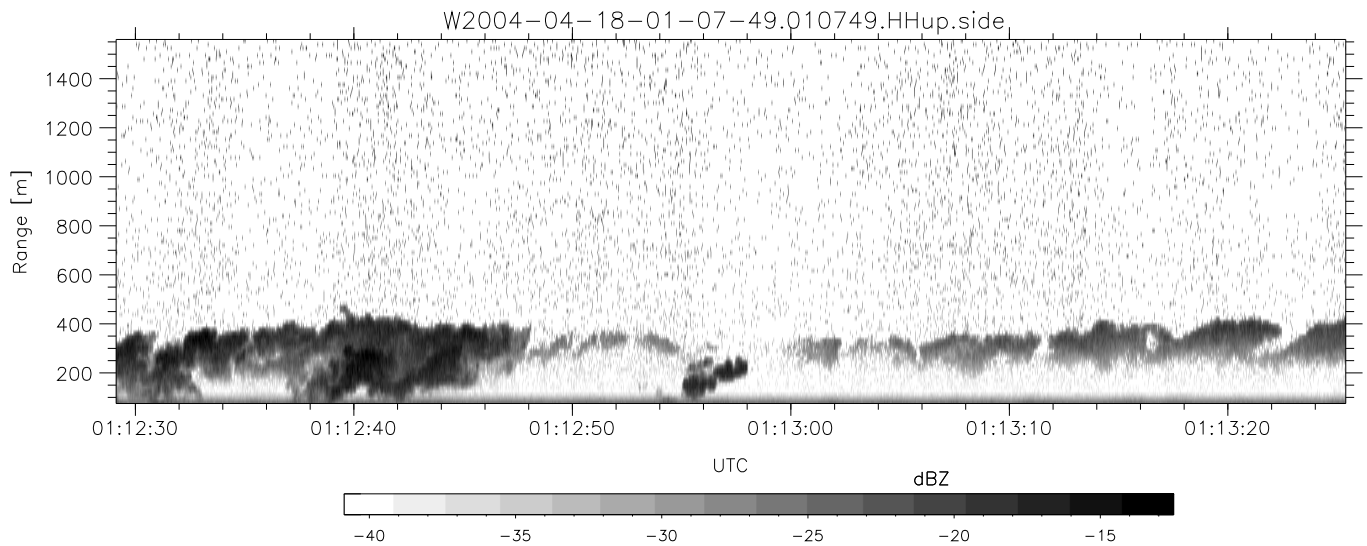
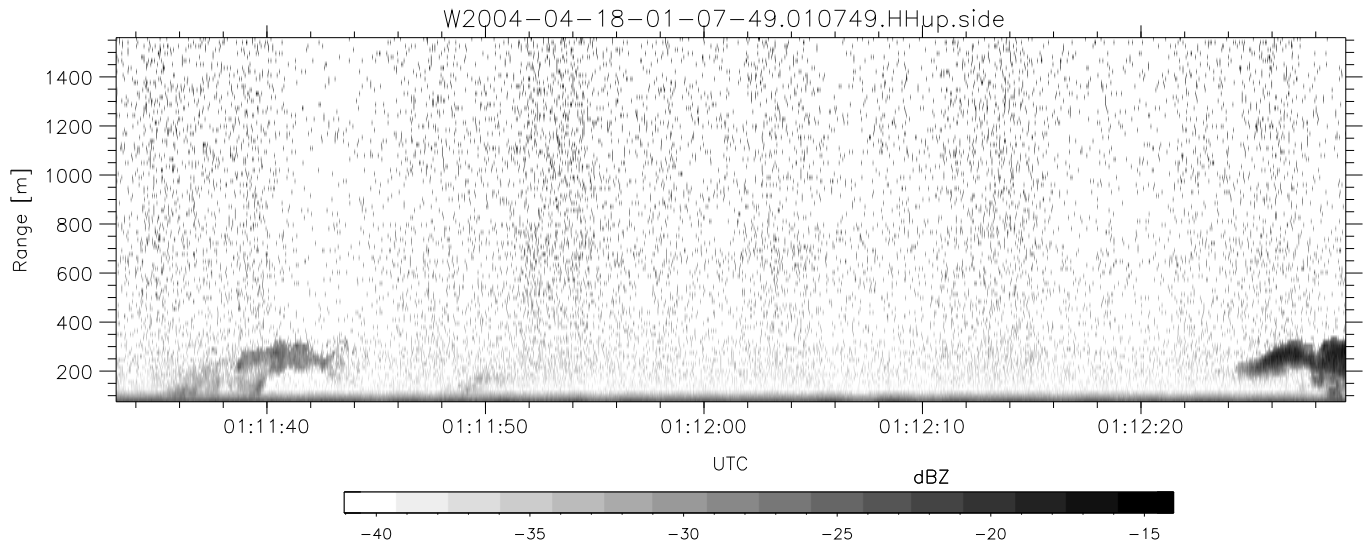
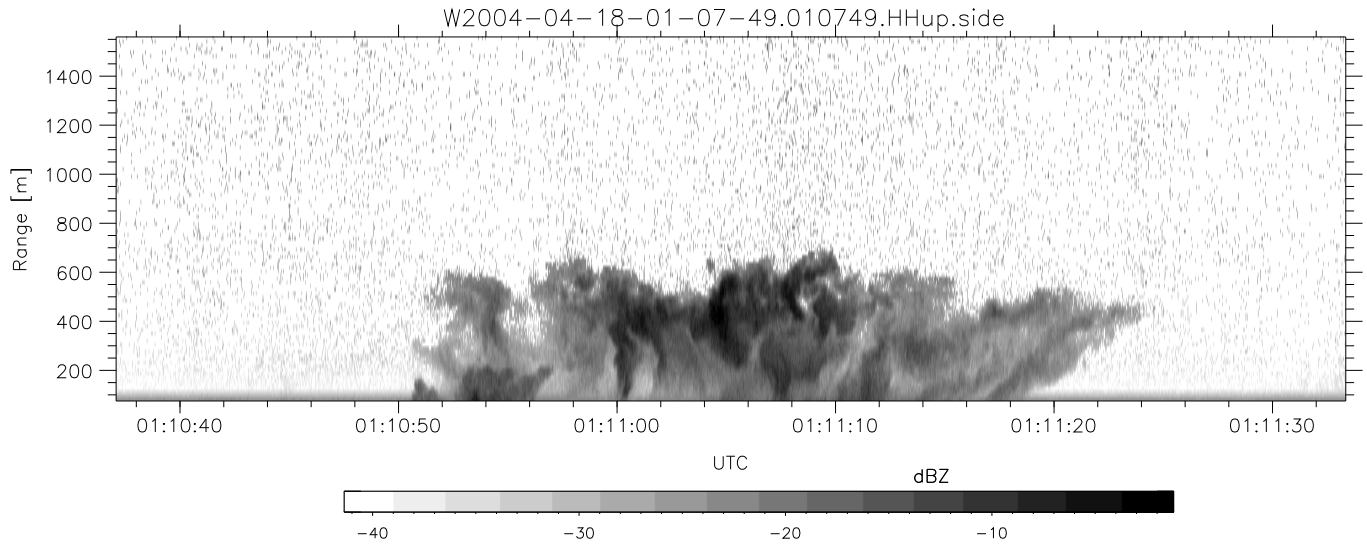


CIFEX 2004 Data (cal/250ns+2.5/100ns-3.5/500ns: 53.0,50.0)

W2004-04-18-01-07-49 - PPMAG4, IRIG:1/0/2
 UTC: 01:07:49.04 to 02:19:09.51, Dur: 4280s
 TimeLngth: 4280.54s, TimeInt: 28ms (35.4pps)
 TimeCor=-13.0s, PPS(min,max,med): 35,36,35
 Timeint/DSPdiff(mn,min,mx):28,28,28/28,28,28
 Prof: 378 to 152123, NumProf(r/t): 17571/151745
 ProcTime/Recs: 01:07:49-01:16:04/0-17570
 ADacqtime: 25ms; DRate: 198.4KB/s; Flags: 0, 0, 0
 Pulse: 275ns, IFfilt: 5.0MHz; ppPol: HH HV VV
 TxPol: HHVV, PRF: 20 10 20 10 kHz, Noiseflg:4,2
 Range: Delay 75m, Spacing 15m, Gates 100
 Ave. Pulses: 84, Rng/Prof Aspect@90m/s: 5.9

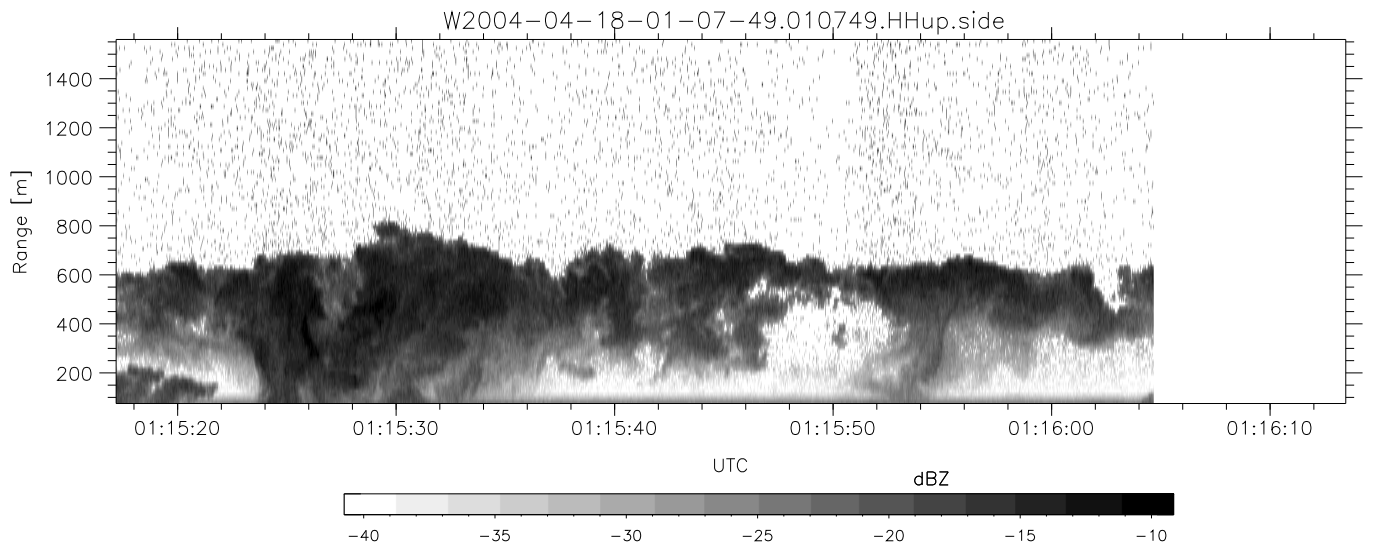
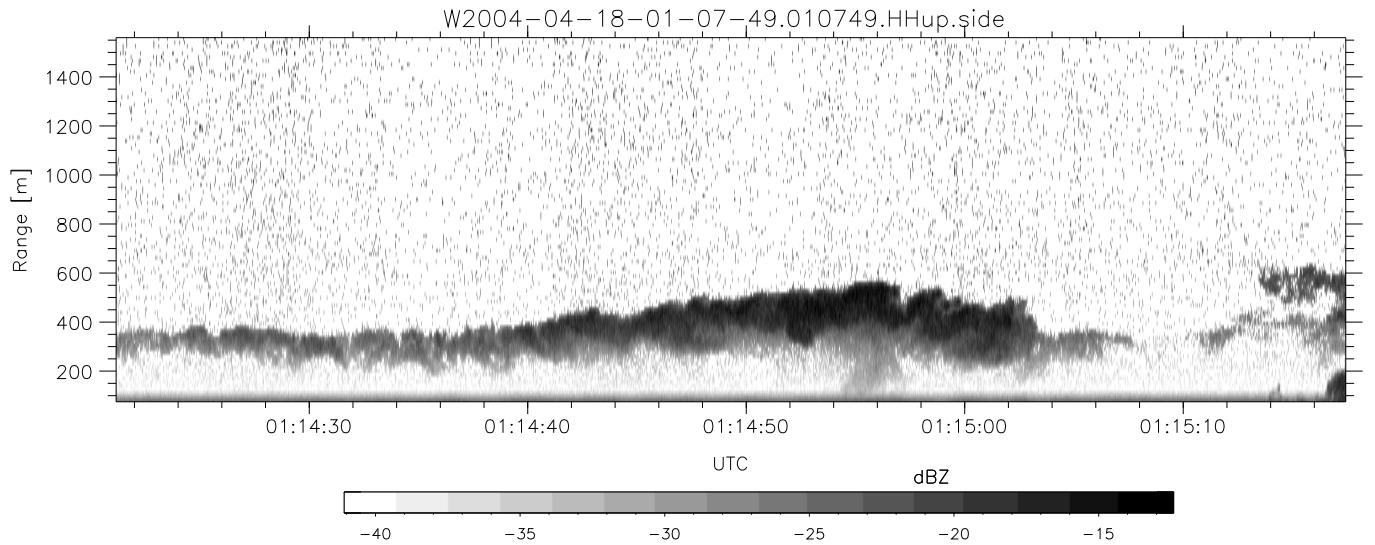
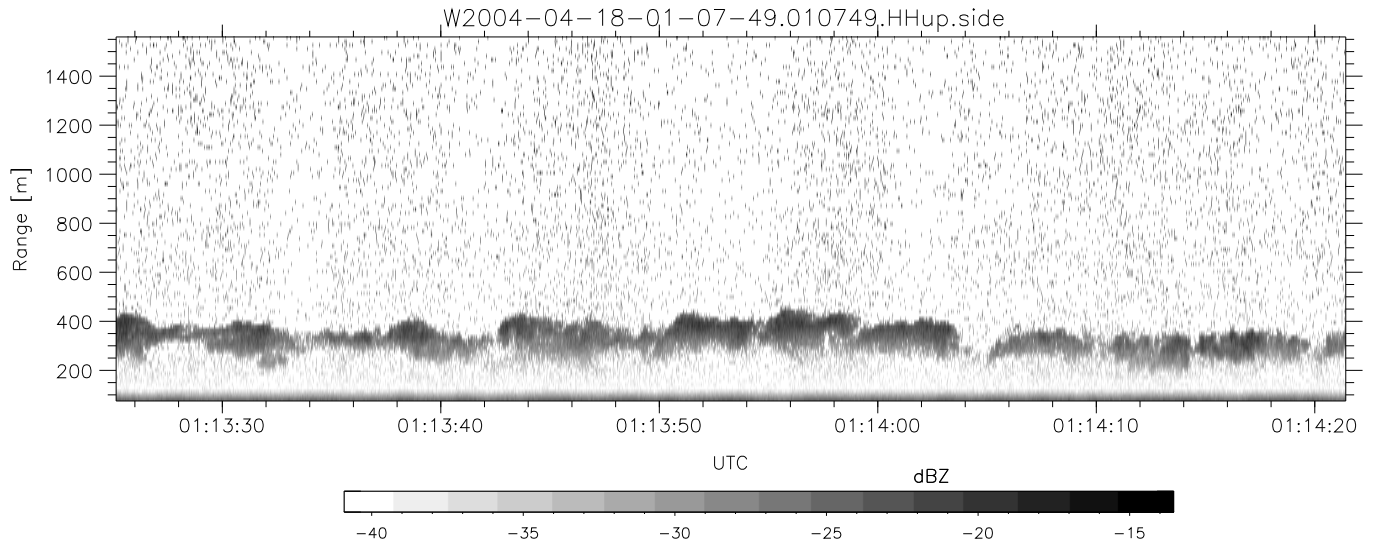
	Min	Max	Mean	Std	Varc%
hhN(dB)	-68.05	-64.57	-66.12	-76.10	10.1
vvN(dB)	-68.01	-64.19	-66.11	-75.80	10.7
hhL(dB)	-10.89	2.17	-0.44	-4.53	39.0
vvL(dB)	1.85	6.00	4.36	-2.82	19.2
ppN(m/s)	-12.35	12.44	-0.14	4.17	
ppT(m/s)	-97.53	98.30	-1.08	32.94	
hh/vv(dB)	NaN	70.18	NaN	52.17	-667
vh/hh(dB)	NaN	-1.03	-21.61	-13.51	645.
hv/vv(dB)	NaN	-32.94	-51.57	-44.92	461.
hnjmp(dB)			-0.17		
vnjmp(dB)			-0.16		



CIFEX 2004 Data (cal/250ns+2.5/100ns-3.5/500ns: 53.0,50.0)

W2004-04-18-01-07-49 - PPMAG4, IRIG:1/0/2
 UTC: 01:07:49.04 to 02:19:09.51, Dur: 4280s
 TimeLngth: 4280.54s, TimeInt: 28ms (35.4pps)
 TimeCor=-13.0s, PPS(min,max,med): 35,36,35
 Timeint/DSPdiff(mn,min,mx):28,28,28/28,28,28
 Prof: 378 to 152123, NumProf(r/t): 17571/151745
 ProcTime/Recs: 01:07:49-01:16:04/0-17570
 ADacqtime: 25ms; DRate: 198.4KB/s; Flags: 0, 0, 0
 Pulse: 275ns, IFfilt: 5.0MHz; ppPol: HH HV VV
 TxPol: HHVV, PRF: 20 10 20 10 kHz, Noiseflg:4,2
 Range: Delay 75m, Spacing 15m, Gates 100
 Ave. Pulses: 84, Rng/Prof Aspect@90m/s: 5.9

	Min	Max	Mean	Std	Varc%
hhN(dB)	-68.05	-64.57	-66.12	-76.10	10.1
vvN(dB)	-68.01	-64.19	-66.11	-75.80	10.7
hhL(dB)	-10.89	2.17	-0.44	-4.53	39.0
vvL(dB)	1.85	6.00	4.36	-2.82	19.2
ppN(m/s)	-12.35	12.44	-0.14	4.17	
ppT(m/s)	-97.53	98.30	-1.08	32.94	
hh/vv(dB)	NaN	70.18	NaN	52.17	-667
vh/hh(dB)	NaN	-1.03	-21.61	-13.51	645.
hv/vv(dB)	NaN	-32.94	-51.57	-44.92	461.
hnjmp(dB)				-0.17	
vnjmp(dB)				-0.16	



CIFEX 2004 Data (cal/250ns+2.5/100ns-3.5/500ns: 53.0,50.0)

W2004-04-18-01-07-49 - PPMAG4, IRIG:1/0/2
 UTC: 01:07:49.04 to 02:19:09.51, Dur: 4280s
 TimeLngth: 4280.54s, TimeInt: 28ms (35.4pps)
 TimeCor=-13.0s, PPS(min,max,med): 35,36,35
 Timeint/DSPdiff(mn,min,mx):28,28,28/28,28,28
 Prof: 378 to 152123, NumProf(r/t): 17571/151745
 ProcTime/Recs: 01:07:49-01:16:04/0-17570
 ADacqtime: 25ms; DRate: 198.4KB/s; Flags: 0, 0, 0
 Pulse: 275ns, IFfilt: 5.0MHz; ppPol: HH HV VV
 TxPol: HHVV, PRF: 20 10 20 10 kHz, Noiseflg:4,2
 Range: Delay 75m, Spacing 15m, Gates 100
 Ave. Pulses: 84, Rng/Prof Aspect@90m/s: 5.9

	Min	Max	Mean	Std	Varc%
hhN (dB)	-68.05	-64.57	-66.12	-76.10	10.1
vvN (dB)	-68.01	-64.19	-66.11	-75.80	10.7
hhL (dB)	-10.89	2.17	-0.44	-4.53	39.0
vvL (dB)	1.85	6.00	4.36	-2.82	19.2
ppN (m/s)	-12.35	12.44	-0.14	4.17	
ppT (m/s)	-97.53	98.30	-1.08	32.94	
hh/vv (dB)	NaN	70.18	NaN	52.17	-667
vh/hh (dB)	NaN	-1.03	-21.61	-13.51	645.
hv/vv (dB)	NaN	-32.94	-51.57	-44.92	461.
hnjmp (dB)				-0.17	
vnjmp (dB)				-0.16	