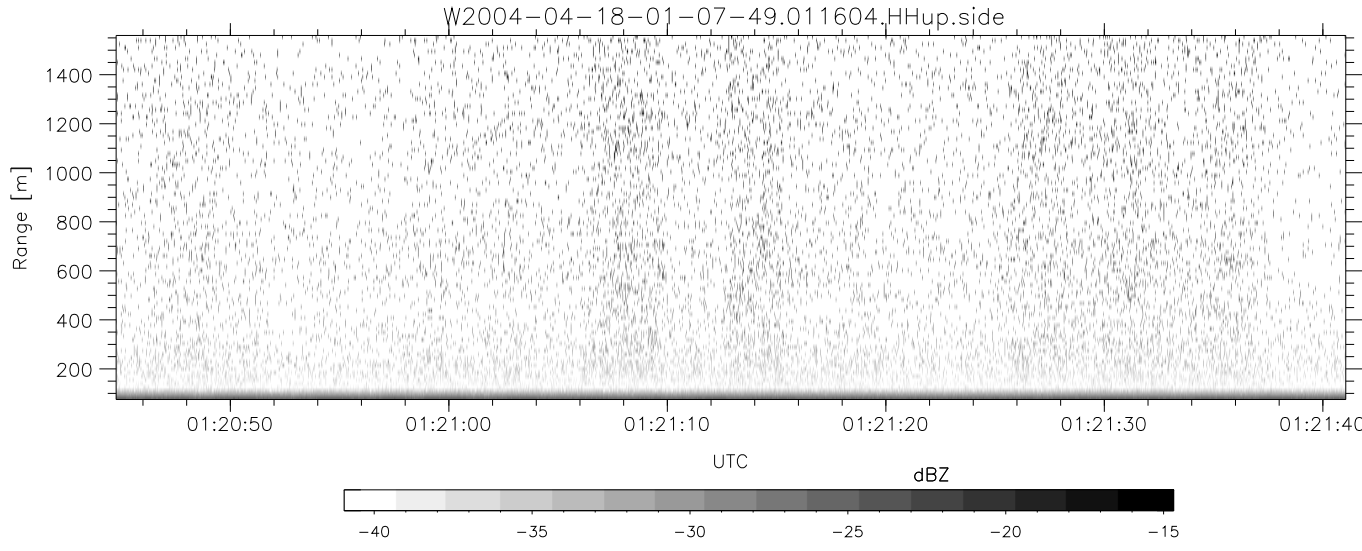
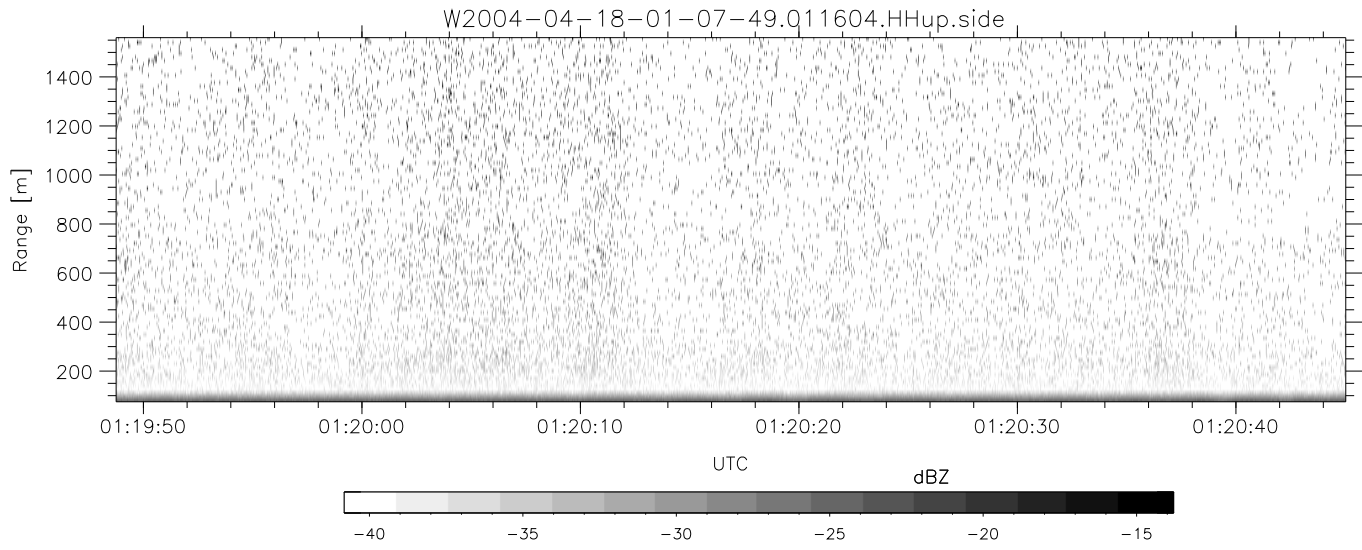
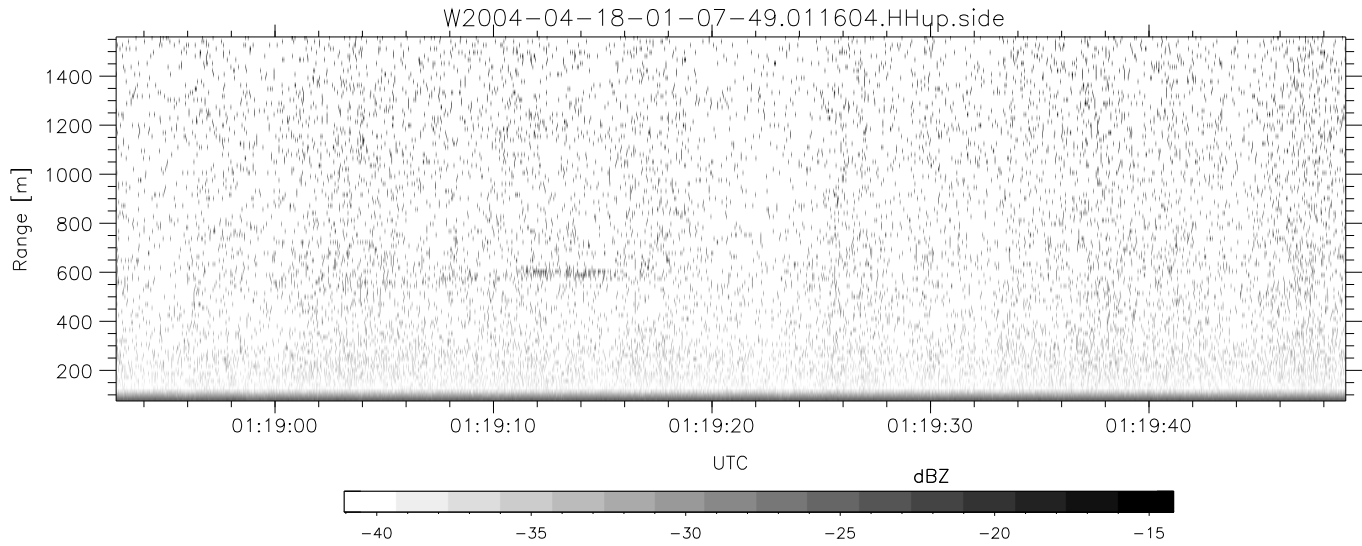


CIFEX 2004 Data (cal/250ns+2.5/100ns-3.5/500ns: 53.0,50.0)

W2004-04-18-01-07-49 - PPMAG4, IRIG:1/0/2  
 UTC: 01:07:49.04 to 02:19:09.51, Dur: 4280s  
 TimeLngth: 4280.54s, TimeInt: 28ms (35.4pps)  
 TimeCor=-13.0s, PPS(min,max,med): 35,36,35  
 Timeint/DSPdiff(mn,min,mx):28,28,28/28,28,28  
 Prof: 378 to 152123, NumProf(r/t): 17571/151745  
 ProcTime/Recs: 01:16:04-01:24:20/17571-35141  
 ADacqtime: 25ms; DRate: 198.4KB/s; Flags: 0, 0, 0  
 Pulse: 275ns, IFfilt: 5.0MHz; ppPol: HH HV VV  
 TxPol: HHVV, PRF: 20 10 20 10 kHz, Noiseflg:2,1  
 Range: Delay 75m, Spacing 15m, Gates 100  
 Ave. Pulses: 84, Rng/Prof Aspect@90m/s: 5.9

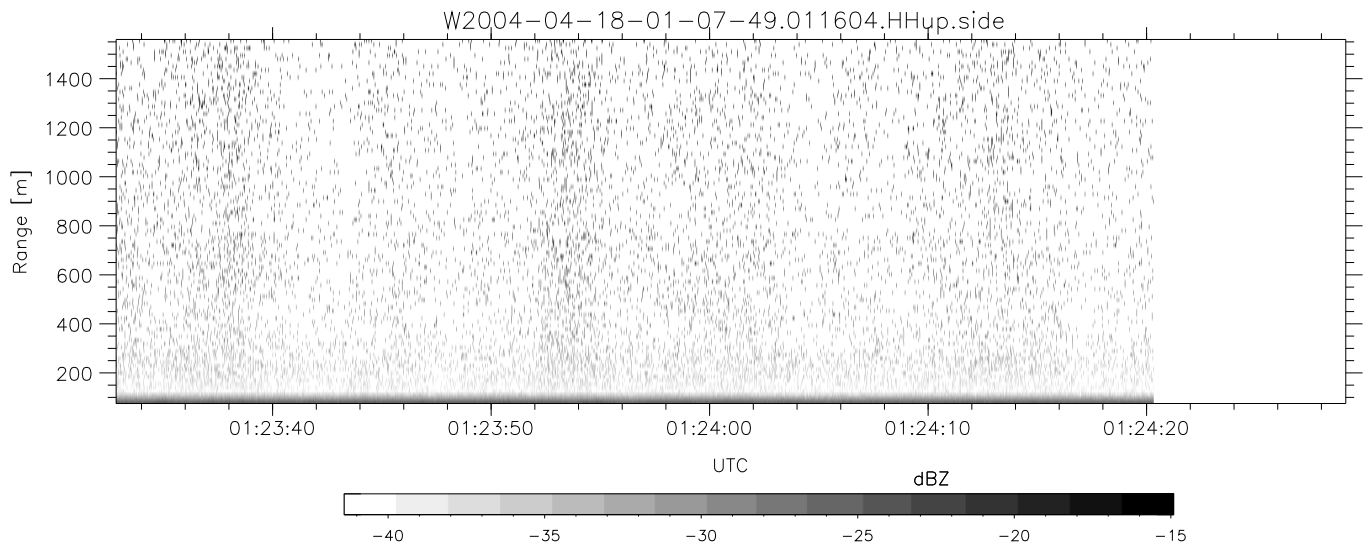
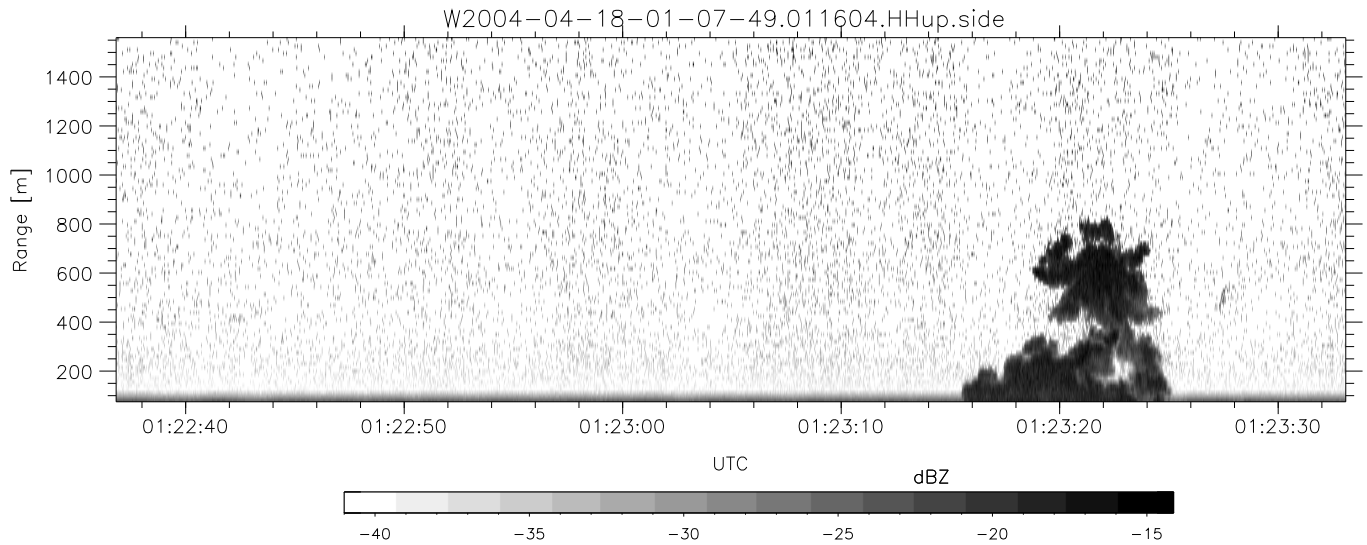
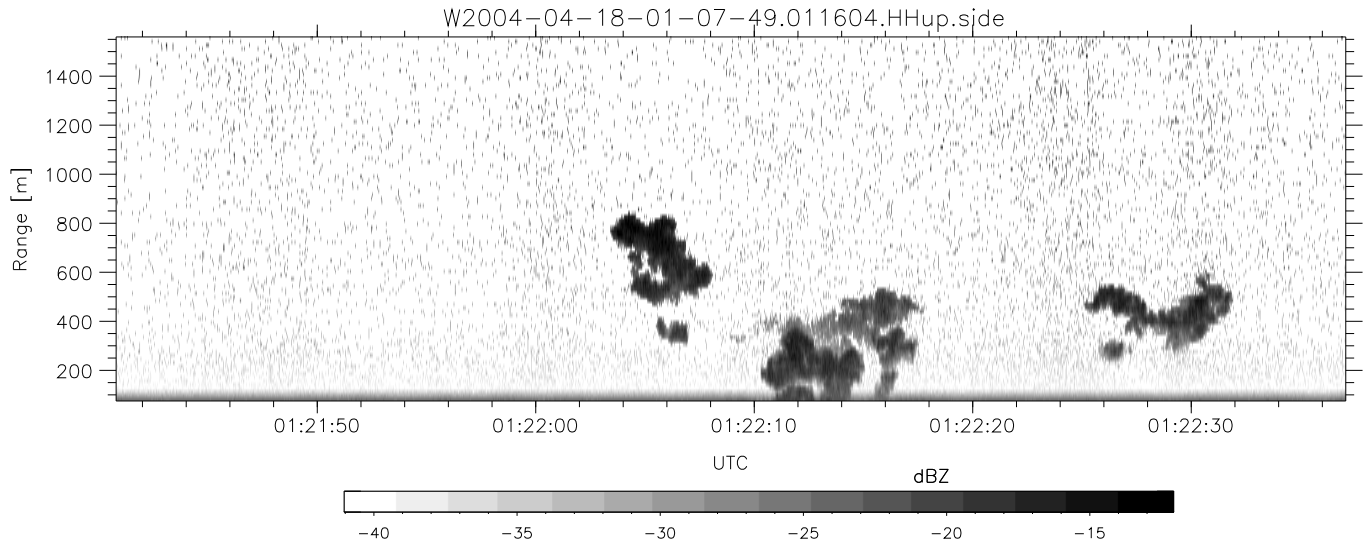
	Min	Max	Mean	Std	Varc%
hhN(dB)	-68.24	-64.51	-66.21	-76.18	10.1
vvN(dB)	-67.99	-64.44	-66.21	-76.11	10.2
hhL(dB)	-4.63	1.60	0.08	-9.10	12.1
vvL(dB)	1.34	6.00	4.78	-3.16	16.1
ppN(m/s)	-12.32	12.77	-0.03	4.17	
ppT(m/s)	-97.30	100.89	-0.23	32.95	
hh/vv(dB)	NaN	47.67	13.20	29.86	4633
vh/hh(dB)	NaN	-29.02	-32.55	-35.13	55.3
hv/vv(dB)	NaN	-34.93	-57.06	-46.21	1217
hnjmp(dB)				0.16	
vnjmp(dB)				0.18	



CIFEX 2004 Data (cal/250ns+2.5/100ns-3.5/500ns: 53.0,50.0)

W2004-04-18-01-07-49 - PPMAG4, IRIG:1/0/2  
 UTC: 01:07:49.04 to 02:19:09.51, Dur: 4280s  
 TimeLngth: 4280.54s, TimeInt: 28ms (35.4pps)  
 TimeCor=-13.0s, PPS(min,max,med): 35,36,35  
 Timeint/DSPdiff(mn,min,mx):28,28,28/28,28,28  
 Prof: 378 to 152123, NumProf(r/t): 17571/151745  
 ProcTime/Recs: 01:16:04-01:24:20/17571-35141  
 ADacqtime: 25ms; DRate: 198.4KB/s; Flags: 0, 0, 0  
 Pulse: 275ns, IFilt: 5.0MHz; ppPol: HH HV VV  
 TxPol: HHVV, PRF: 20 10 20 10 kHz, NoiseFlg:2,1  
 Range: Delay 75m, Spacing 15m, Gates 100  
 Ave. Pulses: 84, Rng/Prof Aspect@90m/s: 5.9

	Min	Max	Mean	Std	Varc%
hhN(dB)	-68.24	-64.51	-66.21	-76.18	10.1
vvN(dB)	-67.99	-64.44	-66.21	-76.11	10.2
hhL(dB)	-4.63	1.60	0.08	-9.10	12.1
vvL(dB)	1.34	6.00	4.78	-3.16	16.1
ppN(m/s)	-12.32	12.77	-0.03	4.17	
ppT(m/s)	-97.30	100.89	-0.23	32.95	
hh/vv(dB)	NaN	47.67	13.20	29.86	4633
vh/hh(dB)	NaN	-29.02	-32.55	-35.13	55.3
hv/vv(dB)	NaN	-34.93	-57.06	-46.21	1217
hnjmp(dB)			0.16		
vnjmp(dB)			0.18		



CIFEX 2004 Data (cal/250ns+2.5/100ns-3.5/500ns: 53.0,50.0)

W2004-04-18-01-07-49 - PPMAG4, IRIG:1/0/2  
 UTC: 01:07:49.04 to 02:19:09.51, Dur: 4280s  
 TimeLngth: 4280.54s, TimeInt: 28ms (35.4pps)  
 TimeCor=-13.0s, PPS(min,max,med): 35,36,35  
 Timeint/DSPdiff(mn,min,mx):28,28,28/28,28,28  
 Prof: 378 to 152123, NumProf(r/t): 17571/151745  
 ProcTime/Recs: 01:16:04-01:24:20/17571-35141  
 ADacqtime: 25ms; DRate: 198.4KB/s; Flags: 0, 0, 0  
 Pulse: 275ns, IFfilt: 5.0MHz; ppPol: HH HV VV  
 TxPol: HHVV, PRF: 20 10 20 10 kHz, NoiseFlg:2,1  
 Range: Delay 75m, Spacing 15m, Gates 100  
 Ave. Pulses: 84, Rng/Prof Aspect@90m/s: 5.9

	Min	Max	Mean	Std	Varc%
hhN(dB)	-68.24	-64.51	-66.21	-76.18	10.1
vvN(dB)	-67.99	-64.44	-66.21	-76.11	10.2
hhL(dB)	-4.63	1.60	0.08	-9.10	12.1
vvL(dB)	1.34	6.00	4.78	-3.16	16.1
ppN(m/s)	-12.32	12.77	-0.03	4.17	
ppT(m/s)	-97.30	100.89	-0.23	32.95	
hh/vv(dB)	NaN	47.67	13.20	29.86	4633
vh/hh(dB)	NaN	-29.02	-32.55	-35.13	55.3
hv/vv(dB)	NaN	-34.93	-57.06	-46.21	1217
hnjmp(dB)				0.16	
vnjmp(dB)				0.18	