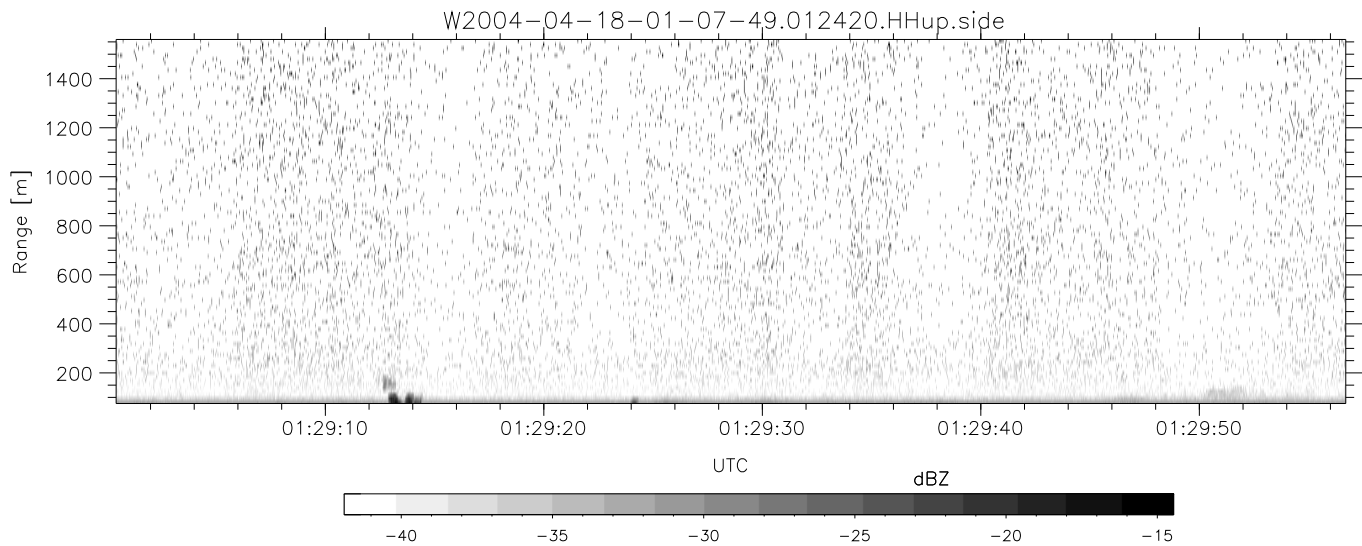
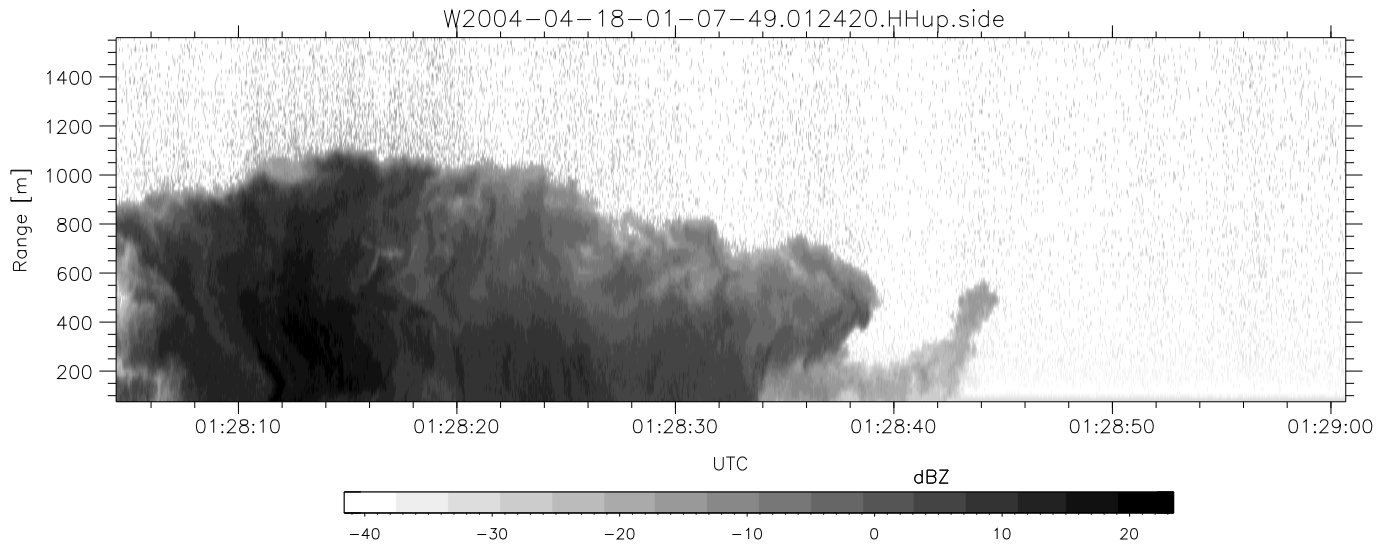
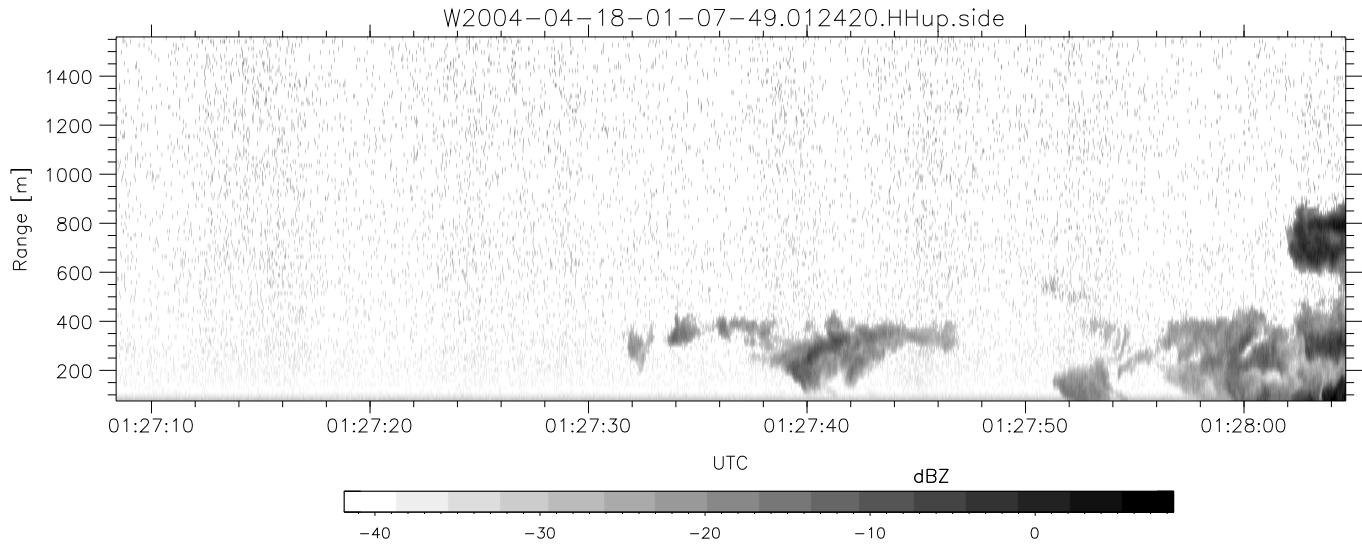


CIFEX 2004 Data (cal/250ns+2.5/100ns-3.5/500ns: 53.0,50.0)

W2004-04-18-01-07-49 - PPMAG4, IRIG:1/0/2
 UTC: 01:07:49.04 to 02:19:09.51, Dur: 4280s
 TimeLngth: 4280.54s, TimeInt: 28ms (35.4pps)
 TimeCor=-13.0s, PPS(min,max,med): 35,36,35
 Timeint/DSPdiff(mn,min,mx):28,28,28/28,28,28
 Prof: 378 to 152123, NumProf(r/t): 17571/151745
 ProcTime/Recs: 01:24:20-01:32:35/35142-52712
 ADacqtime: 25ms; DRate: 198.4KB/s; Flags: 0, 0, 0
 Pulse: 275ns, IFilt: 5.0MHz; ppPol: HH HV VV
 TxPol: HHVV, PRF: 20 10 20 10 kHz, NoiseFlg:4,2
 Range: Delay 75m, Spacing 15m, Gates 100
 Ave. Pulses: 84, Rng/Prof Aspect@90m/s: 5.9

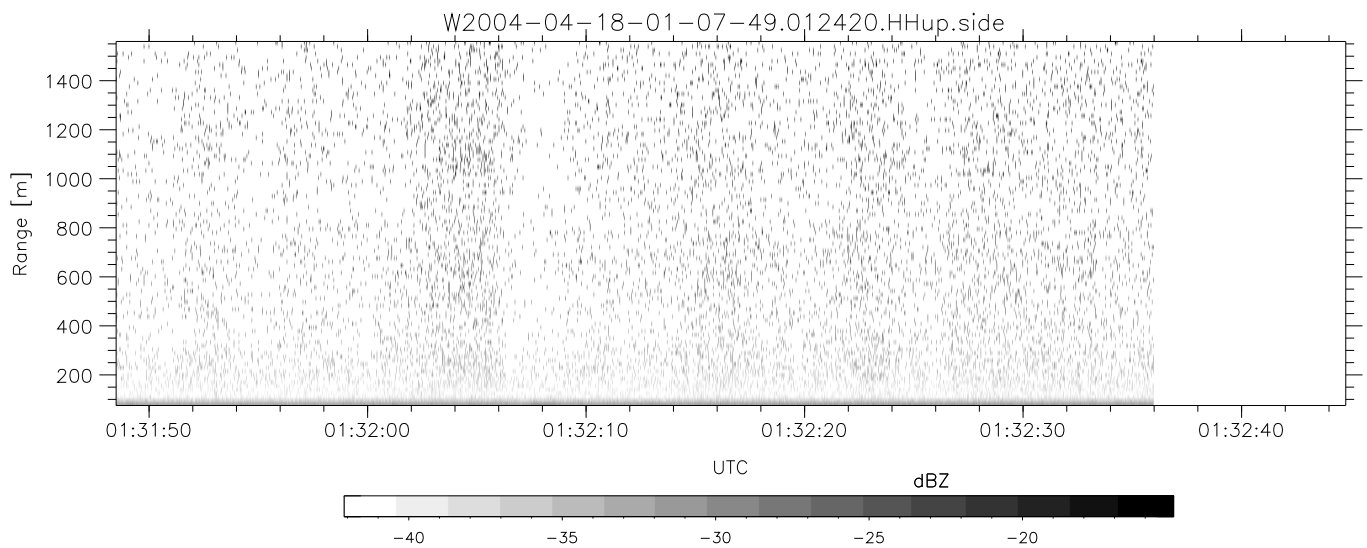
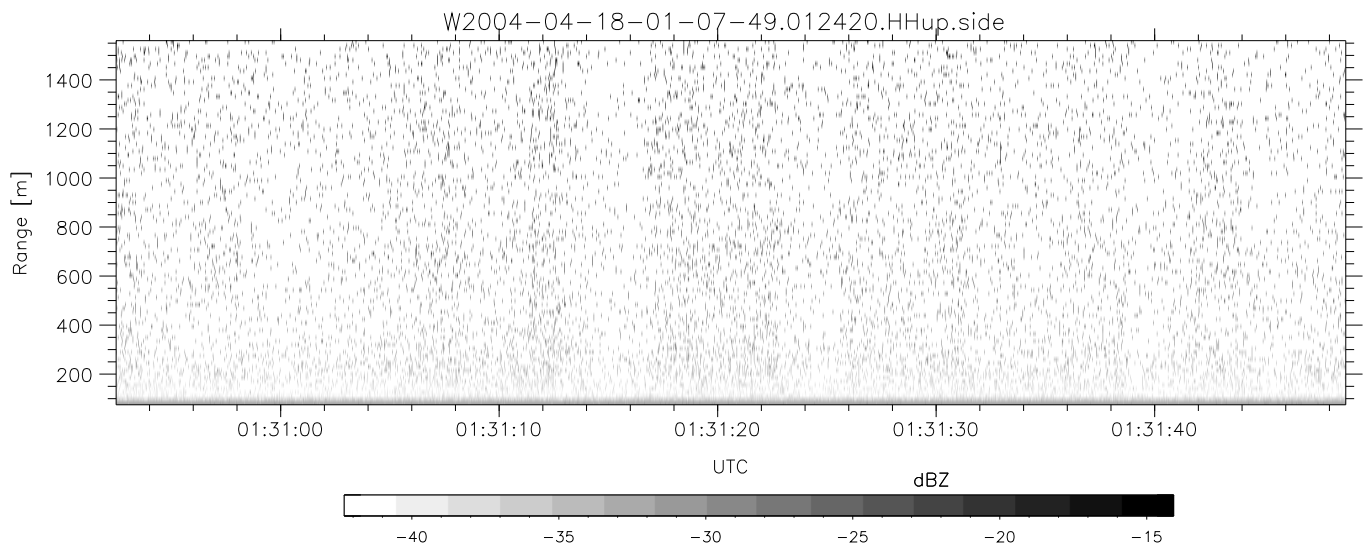
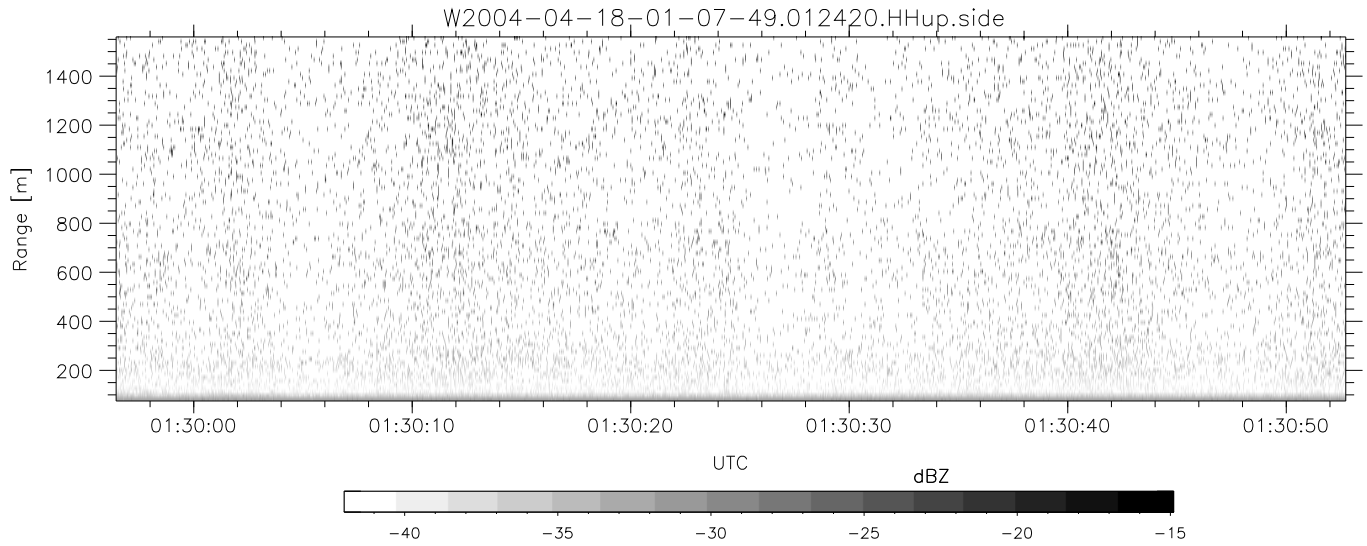
	Min	Max	Mean	Std	Varc%
hhN(dB)	-68.18	-64.69	-66.24	-76.24	10.0
vvN(dB)	-68.03	-64.61	-66.26	-76.16	10.2
hhL(dB)	-16.43	-0.04	-5.83	-8.30	56.6
vvL(dB)	1.85	6.00	5.99	-10.24	2.4
ppN(m/s)	-12.27	12.67	-0.02	4.15	
ppT(m/s)	-96.89	100.09	-0.18	32.78	
hh/vv(dB)	NaN	61.29	18.71	41.20	1773
vh/hh(dB)	NaN	-28.14	-39.73	-38.23	141.
hv/vv(dB)	NaN	-33.70	-51.05	-45.66	345.
hnjmp(dB)			-0.16		
vnjmp(dB)			-0.17		



CIFEX 2004 Data (cal/250ns+2.5/100ns-3.5/500ns: 53.0,50.0)

W2004-04-18-01-07-49 - PPMAG4, IRIG:1/0/2
 UTC: 01:07:49.04 to 02:19:09.51, Dur: 4280s
 TimeLngth: 4280.54s, TimeInt: 28ms (35.4pps)
 TimeCor=-13.0s, PPS(min,max,med): 35,36,35
 Timeint/DSPdiff(mn,min,mx):28,28,28/28,28,28
 Prof: 378 to 152123, NumProf(r/t): 17571/151745
 ProcTime/Recs: 01:24:20-01:32:35/35142-52712
 ADacqtime: 25ms; DRate: 198.4KB/s; Flags: 0, 0, 0
 Pulse: 275ns, IFilt: 5.0MHz; ppPol: HH HV VV
 TxPol: HHVV, PRF: 20 10 20 10 kHz, NoiseFlg:4,2
 Range: Delay 75m, Spacing 15m, Gates 100
 Ave. Pulses: 84, Rng/Prof Aspect@90m/s: 5.9

	Min	Max	Mean	Std	Varc%
hhN(dB)	-68.18	-64.69	-66.24	-76.24	10.0
vvN(dB)	-68.03	-64.61	-66.26	-76.16	10.2
hhL(dB)	-16.43	-0.04	-5.83	-8.30	56.6
vvL(dB)	1.85	6.00	5.99	-10.24	2.4
ppN(m/s)	-12.27	12.67	-0.02	4.15	
ppT(m/s)	-96.89	100.09	-0.18	32.78	
hh/vv(dB)	NaN	61.29	18.71	41.20	1773
vh/hh(dB)	NaN	-28.14	-39.73	-38.23	141.
hv/vv(dB)	NaN	-33.70	-51.05	-45.66	345.
hnjmp(dB)			-0.16		
vnjmp(dB)			-0.17		



CIFEX 2004 Data (cal/250ns+2.5/100ns-3.5/500ns: 53.0,50.0)

W2004-04-18-01-07-49 - PPMAG4, IRIG:1/0/2
 UTC: 01:07:49.04 to 02:19:09.51, Dur: 4280s
 TimeLngth: 4280.54s, TimeInt: 28ms (35.4pps)
 TimeCor=-13.0s, PPS(min,max,med): 35,36,35
 Timeint/DSPdiff(mn,min,mx):28,28,28/28,28,28
 Prof: 378 to 152123, NumProf(r/t): 17571/151745
 ProcTime/Recs: 01:24:20-01:32:35/35142-52712
 ADacqtime: 25ms; DRate: 198.4KB/s; Flags: 0, 0, 0
 Pulse: 275ns, IFfilt: 5.0MHz; ppPol: HH HV VV
 TxPol: HHVV, PRF: 20 10 20 10 kHz, Noiseflg:4,2
 Range: Delay 75m, Spacing 15m, Gates 100
 Ave. Pulses: 84, Rng/Prof Aspect@90m/s: 5.9

	Min	Max	Mean	Std	Varc%
hhN(dB)	-68.18	-64.69	-66.24	-76.24	10.0
vvN(dB)	-68.03	-64.61	-66.26	-76.16	10.2
hhL(dB)	-16.43	-0.04	-5.83	-8.30	56.6
vvL(dB)	1.85	6.00	5.99	-10.24	2.4
ppN(m/s)	-12.27	12.67	-0.02	4.15	
ppT(m/s)	-96.89	100.09	-0.18	32.78	
hh/vv(dB)	NaN	61.29	18.71	41.20	1773
vh/hh(dB)	NaN	-28.14	-39.73	-38.23	141.
hv/vv(dB)	NaN	-33.70	-51.05	-45.66	345.
hnjmp(dB)			-0.16		
vnjmp(dB)			-0.17		