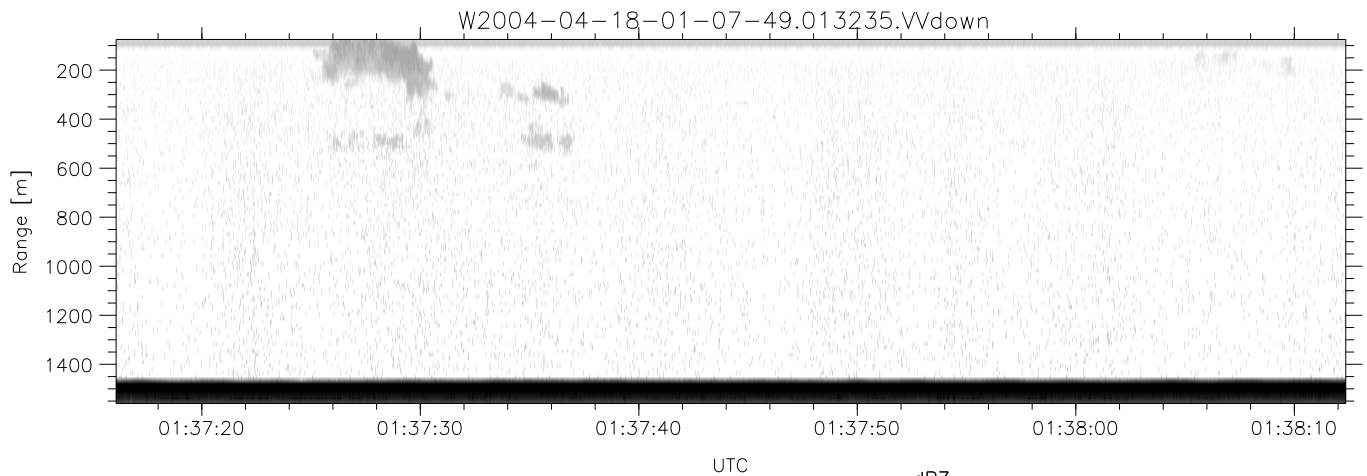
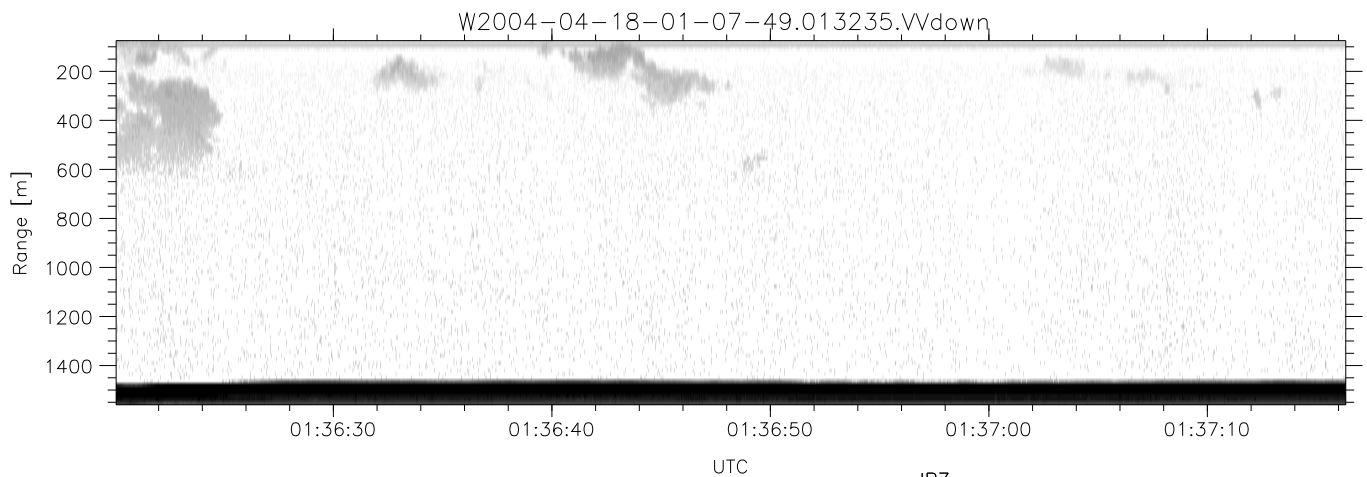
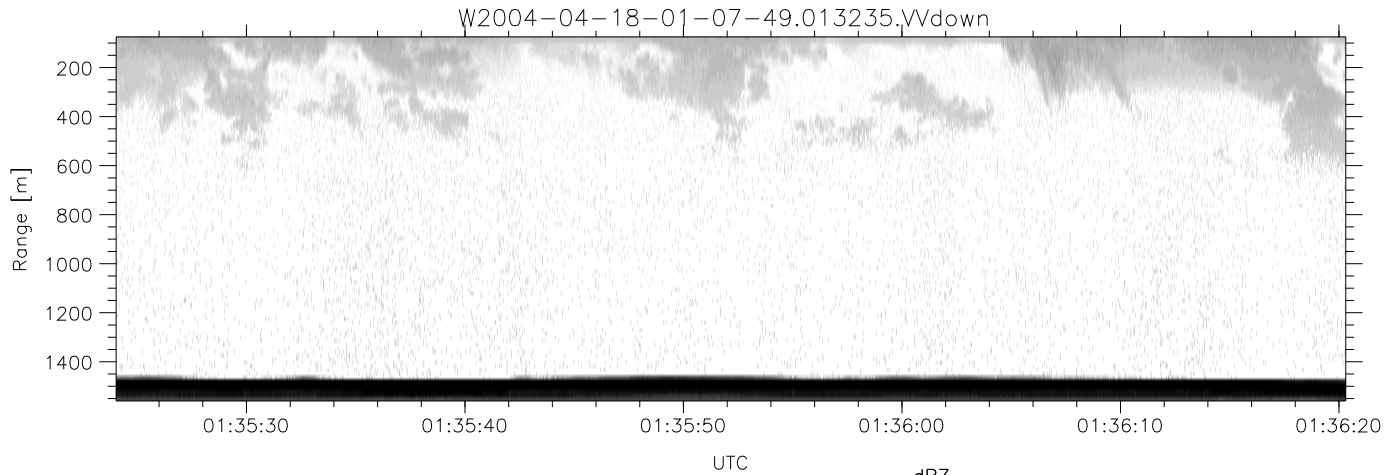


CIFEX 2004 Data (cal/250ns+2.5/100ns-3.5/500ns: 53.0,50.0)

W2004-04-18-01-07-49 - PPMAG4, IRIG:1/0/2  
 UTC: 01:07:49.04 to 02:19:09.51, Dur: 4280s  
 TimeLngth: 4280.54s, TimeInt: 28ms (35.4pps)  
 TimeCor=-13.0s, PPS(min,max,med): 35,36,35  
 Timeint/DSPdiff(mn,min,mx):28,28,28/28,28,28  
 Prof: 378 to 152123, NumProf(r/t): 17571/151745  
 ProcTime/Recs: 01:32:35-01:40:51/52713-70283  
 ADacqtime: 25ms; DRate: 198.4KB/s; Flags: 0, 0, 0  
 Pulse: 275ns, IFilt: 5.0MHz; ppPol: HH HV VV  
 TxPol: HHVV, PRF: 20 10 20 10 kHz, NoiseFlg:2,3  
 Range: Delay 75m, Spacing 15m, Gates 100  
 Ave. Pulses: 84, Rng/Prof Aspect@90m/s: 5.9

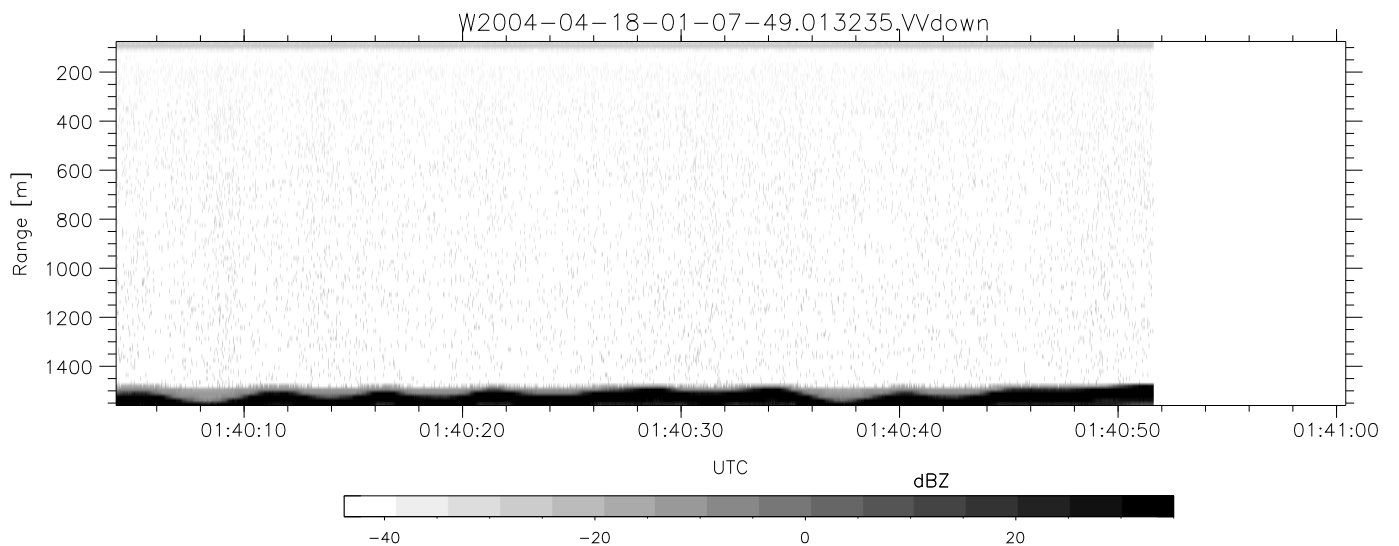
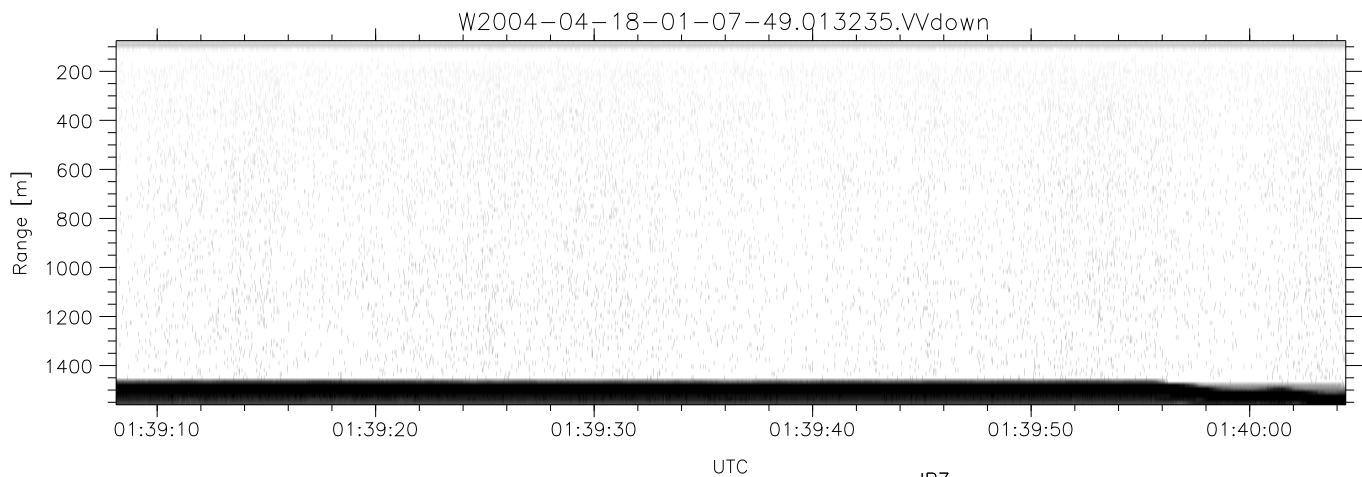
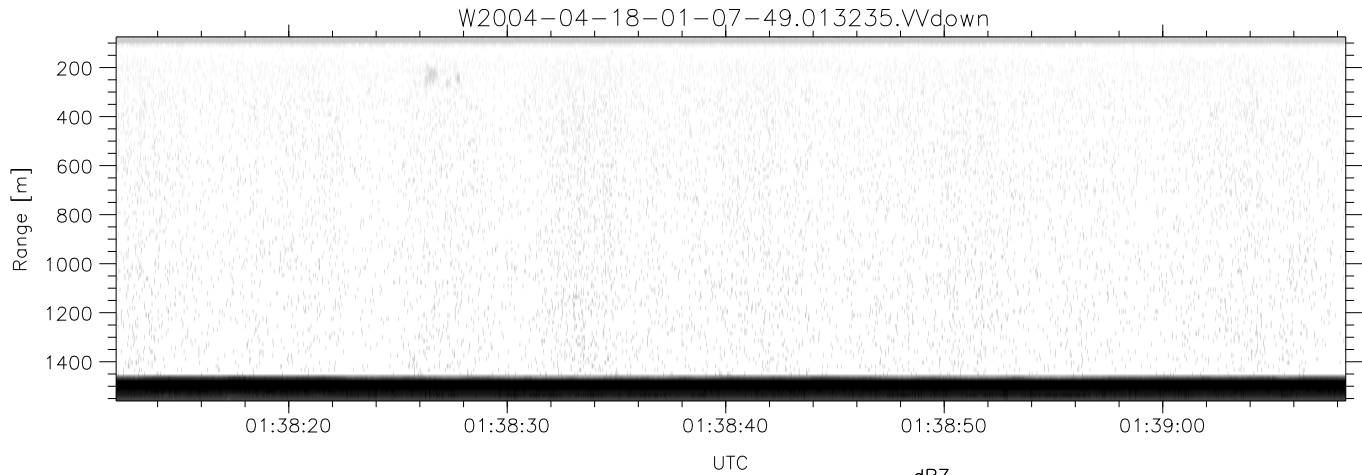
	Min	Max	Mean	Std	Varc%
hhN (dB)	-68.13	-64.76	-66.27	-76.31	9.9
vvN (dB)	-68.45	-64.45	-66.28	-76.20	10.2
hhL (dB)	-15.18	-4.80	-8.25	-14.86	21.8
vvL (dB)	4.53	6.00	6.00	-17.37	0.5
ppN (m/s)	-12.75	12.95	-0.08	4.15	
ppT (m/s)	-100.7	102.32	-0.65	32.80	
hh/vv (dB)	NaN	57.98	15.69	36.63	1239
vh/hh (dB)	-99	-99	-99	-99	-99
hv/vv (dB)	NaN	-35.38	-61.79	-49.72	1612
hn_jmp (dB)			0.17		
vn_jmp (dB)			0.17		



CIFEX 2004 Data (cal/250ns+2.5/100ns-3.5/500ns: 53.0,50.0)

W2004-04-18-01-07-49 - PPMAG4, IRIG:1/0/2  
 UTC: 01:07:49.04 to 02:19:09.51, Dur: 4280s  
 TimeLngth: 4280.54s, TimeInt: 28ms (35.4pps)  
 TimeCor=-13.0s, PPS(min,max,med): 35,36,35  
 Timeint/DSPdiff(mn,min,mx):28,28,28/28,28,28  
 Prof: 378 to 152123, NumProf(r/t): 17571/151745  
 ProcTime/Recs: 01:32:35-01:40:51/52713-70283  
 ADacqtime: 25ms; DRate: 198.4KB/s; Flags: 0, 0, 0  
 Pulse: 275ns, IFilt: 5.0MHz; ppPol: HH HV VV  
 TxPol: HHVV, PRF: 20 10 20 10 kHz, NoiseFlg:2,3  
 Range: Delay 75m, Spacing 15m, Gates 100  
 Ave. Pulses: 84, Rng/Prof Aspect@90m/s: 5.9

	Min	Max	Mean	Std	Varc%
hhN (dB)	-68.13	-64.76	-66.27	-76.31	9.9
vvN (dB)	-68.45	-64.45	-66.28	-76.20	10.2
hhL (dB)	-15.18	-4.80	-8.25	-14.86	21.8
vvL (dB)	4.53	6.00	6.00	-17.37	0.5
ppN (m/s)	-12.75	12.95	-0.08	4.15	
ppT (m/s)	-100.7	102.32	-0.65	32.80	
hh/vv (dB)	NaN	57.98	15.69	36.63	1239
vh/hh (dB)	-99	-99	-99	-99	-99
hv/vv (dB)	NaN	-35.38	-61.79	-49.72	1612
hnjmp (dB)			0.17		
vnjmp (dB)			0.17		



CIFEX 2004 Data (cal/250ns+2.5/100ns-3.5/500ns: 53.0,50.0)

W2004-04-18-01-07-49 - PPMAG4, IRIG:1/0/2  
 UTC: 01:07:49.04 to 02:19:09.51, Dur: 4280s  
 TimeLngth: 4280.54s, TimeInt: 28ms (35.4pps)  
 TimeCor=-13.0s, PPS(min,max,med): 35,36,35  
 Timeint/DSPdiff(mn,min,mx):28,28,28/28,28,28  
 Prof: 378 to 152123, NumProf(r/t): 17571/151745  
 ProcTime/Recs: 01:32:35-01:40:51/52713-70283  
 ADacqtime: 25ms; DRate: 198.4KB/s; Flags: 0, 0, 0  
 Pulse: 275ns, IFilt: 5.0MHz; ppPol: HH HV VV  
 TxPol: HHVV, PRF: 20 10 20 10 kHz, Noiseflg:2,3  
 Range: Delay 75m, Spacing 15m, Gates 100  
 Ave. Pulses: 84, Rng/Prof Aspect@90m/s: 5.9

	Min	Max	Mean	Std	Varc%
hhN (dB)	-68.13	-64.76	-66.27	-76.31	9.9
vvN (dB)	-68.45	-64.45	-66.28	-76.20	10.2
hhL (dB)	-15.18	-4.80	-8.25	-14.86	21.8
vvL (dB)	4.53	6.00	6.00	-17.37	0.5
ppN (m/s)	-12.75	12.95	-0.08	4.15	
ppT (m/s)	-100.7	102.32	-0.65	32.80	
hh/vv (dB)	NaN	57.98	15.69	36.63	1239
vh/hh (dB)	-99	-99	-99	-99	-99
hv/vv (dB)	NaN	-35.38	-61.79	-49.72	1612
hnjmp (dB)			0.17		
vnjmp (dB)			0.17		