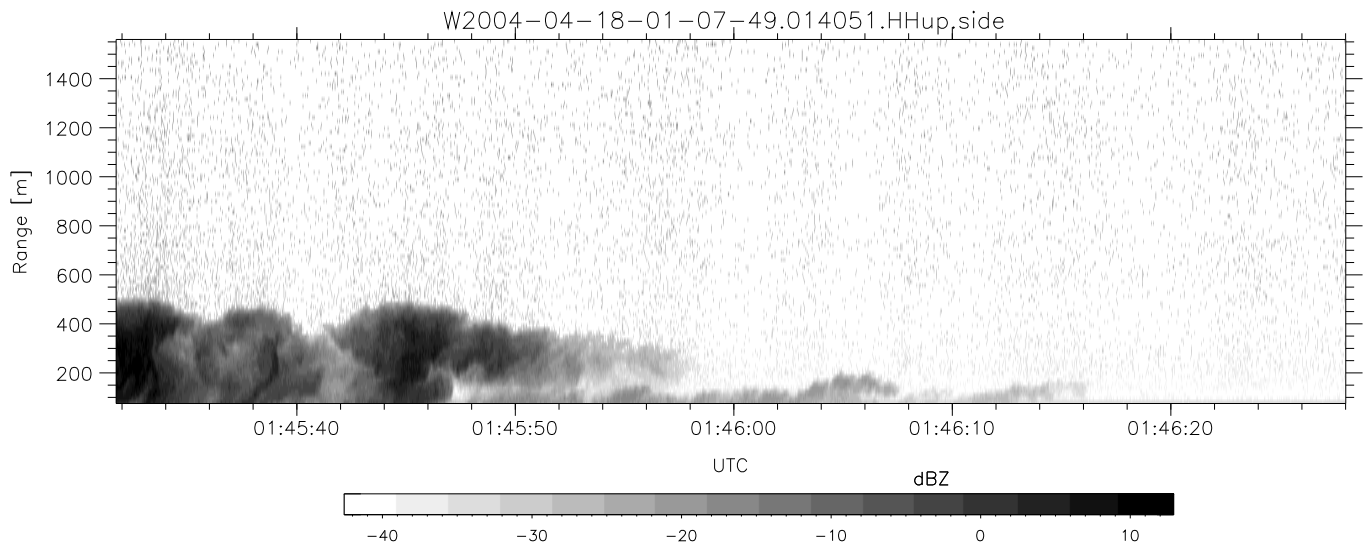
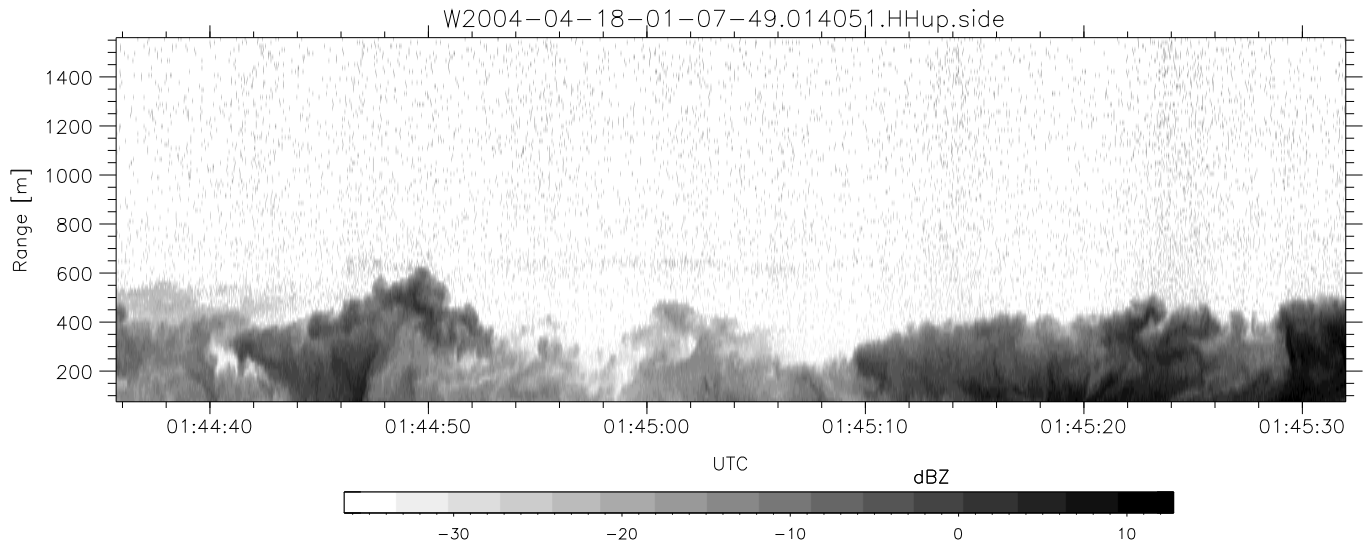
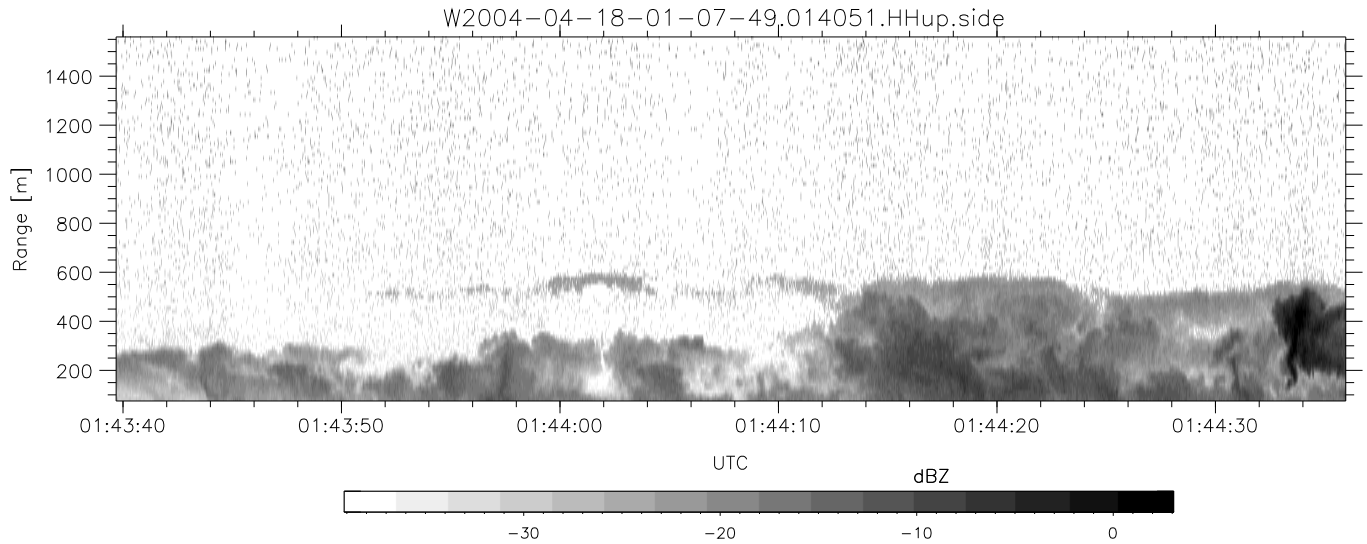


CIFEX 2004 Data (cal/250ns+2.5/100ns-3.5/500ns: 53.0,50.0)

W2004-04-18-01-07-49 - PPMAG4, IRIG:1/0/2
 UTC: 01:07:49.04 to 02:19:09.51, Dur: 4280s
 TimeLngth: 4280.54s, TimeInt: 28ms (35.4pps)
 TimeCor=-13.0s, PPS(min,max,med): 35,36,35
 Timeint/DSPdiff(mn,min,mx):28,28,28/28,28,28
 Prof: 378 to 152123, NumProf(r/t): 17571/151745
 ProcTime/Recs: 01:40:51-01:49:07/70284-87854
 ADacqtime: 25ms; DRate: 198.4KB/s; Flags: 0, 0, 0
 Pulse: 275ns, IFfilt: 5.0MHz; ppPol: HH HV VV
 TxPol: HHVV, PRF: 20 10 20 10 kHz, Noiseflg:4,2
 Range: Delay 75m, Spacing 15m, Gates 100
 Ave. Pulses: 84, Rng/Prof Aspect@90m/s: 5.9

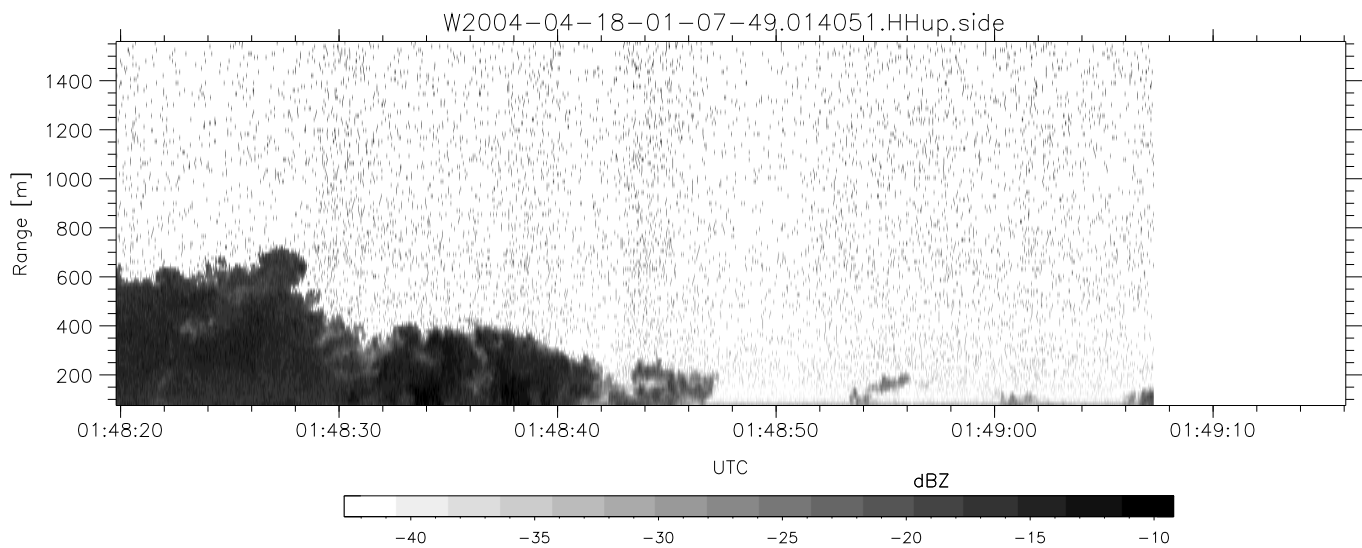
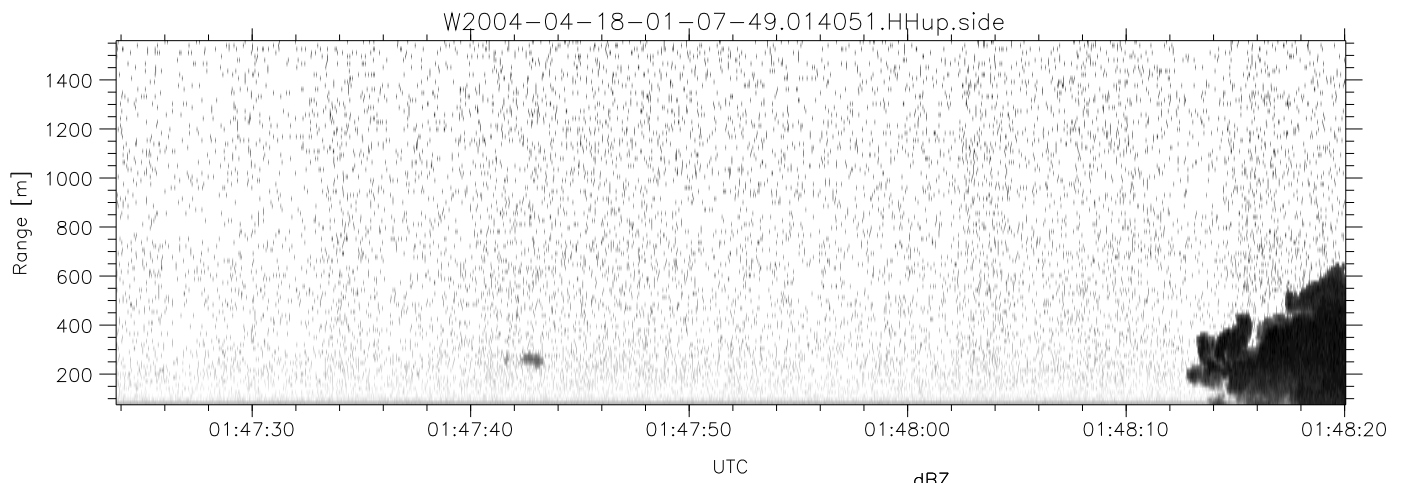
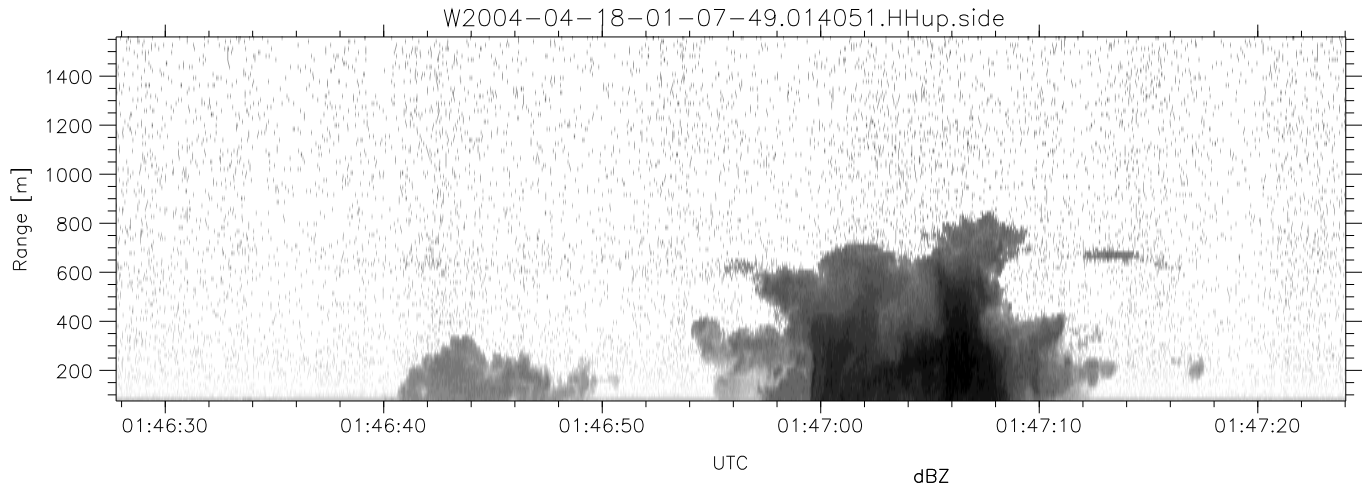
| | Min | Max | Mean | Std | Varc% |
|------------|--------|--------|--------|--------|-------|
| hhN (dB) | -68.04 | -64.56 | -66.25 | -76.25 | 10.0 |
| vvN (dB) | -68.10 | -64.77 | -66.26 | -76.21 | 10.1 |
| hhL (dB) | -14.47 | -6.41 | -8.89 | -16.28 | 18.2 |
| vvL (dB) | -6.20 | 6.00 | 5.99 | -9.86 | 2.6 |
| ppN (m/s) | -12.09 | 12.65 | -0.04 | 4.14 | |
| ppT (m/s) | -95.50 | 99.93 | -0.31 | 32.70 | |
| hh/vv (dB) | NaN | 67.93 | NaN | 51.76 | -203 |
| vh/hh (dB) | NaN | -27.30 | -37.62 | -36.86 | 119. |
| hv/vv (dB) | NaN | -33.85 | -53.57 | -46.16 | 550. |
| hnjmp (dB) | | | -0.17 | | |
| vnjmp (dB) | | | -0.18 | | |



CIFEX 2004 Data (cal/250ns+2.5/100ns-3.5/500ns: 53.0,50.0)

W2004-04-18-01-07-49 - PPMAG4, IRIG:1/0/2
 UTC: 01:07:49.04 to 02:19:09.51, Dur: 4280s
 TimeLngth: 4280.54s, TimeInt: 28ms (35.4pps)
 TimeCor=-13.0s, PPS(min,max,med): 35,36,35
 Timeint/DSPdiff(mn,min,mx):28,28,28/28,28,28
 Prof: 378 to 152123, NumProf(r/t): 17571/151745
 ProcTime/Recs: 01:40:51-01:49:07/70284-87854
 ADacqtime: 25ms; DRate: 198.4KB/s; Flags: 0, 0, 0
 Pulse: 275ns, IFilt: 5.0MHz; ppPol: HH HV VV
 TxPol: HHVV, PRF: 20 10 20 10 kHz, NoiseFlg:4,2
 Range: Delay 75m, Spacing 15m, Gates 100
 Ave. Pulses: 84, Rng/Prof Aspect@90m/s: 5.9

| | Min | Max | Mean | Std | Varc% |
|-----------|--------|--------|--------|--------|-------|
| hhN(dB) | -68.04 | -64.56 | -66.25 | -76.25 | 10.0 |
| vvN(dB) | -68.10 | -64.77 | -66.26 | -76.21 | 10.1 |
| hhL(dB) | -14.47 | -6.41 | -8.89 | -16.28 | 18.2 |
| vvL(dB) | -6.20 | 6.00 | 5.99 | -9.86 | 2.6 |
| ppN(m/s) | -12.09 | 12.65 | -0.04 | 4.14 | |
| ppT(m/s) | -95.50 | 99.93 | -0.31 | 32.70 | |
| hh/vv(dB) | NaN | 67.93 | NaN | 51.76 | -203 |
| vh/hh(dB) | NaN | -27.30 | -37.62 | -36.86 | 119. |
| hv/vv(dB) | NaN | -33.85 | -53.57 | -46.16 | 550. |
| hnjmp(dB) | | | -0.17 | | |
| vnjmp(dB) | | | -0.18 | | |



CIFEX 2004 Data (cal/250ns+2.5/100ns-3.5/500ns: 53.0,50.0)

W2004-04-18-01-07-49 - PPMAG4, IRIG:1/0/2
 UTC: 01:07:49.04 to 02:19:09.51, Dur: 4280s
 TimeLngth: 4280.54s, TimeInt: 28ms (35.4pps)
 TimeCor=-13.0s, PPS(min,max,med): 35,36,35
 Timeint/DSPdiff(mn,min,mx):28,28,28/28,28,28
 Prof: 378 to 152123, NumProf(r/t): 17571/151745
 ProcTime/Recs: 01:40:51-01:49:07/70284-87854
 ADacqtime: 25ms; DRate: 198.4KB/s; Flags: 0, 0, 0
 Pulse: 275ns, IFfilt: 5.0MHz; ppPol: HH HV VV
 TxPol: HHVV, PRF: 20 10 20 10 kHz, Noiseflg:4,2
 Range: Delay 75m, Spacing 15m, Gates 100
 Ave. Pulses: 84, Rng/Prof Aspect@90m/s: 5.9

| | Min | Max | Mean | Std | Varc% |
|-----------|--------|--------|--------|--------|-------|
| hhN(dB) | -68.04 | -64.56 | -66.25 | -76.25 | 10.0 |
| vvN(dB) | -68.10 | -64.77 | -66.26 | -76.21 | 10.1 |
| hhL(dB) | -14.47 | -6.41 | -8.89 | -16.28 | 18.2 |
| vvL(dB) | -6.20 | 6.00 | 5.99 | -9.86 | 2.6 |
| ppN(m/s) | -12.09 | 12.65 | -0.04 | 4.14 | |
| ppT(m/s) | -95.50 | 99.93 | -0.31 | 32.70 | |
| hh/vv(dB) | NaN | 67.93 | NaN | 51.76 | -203 |
| vh/hh(dB) | NaN | -27.30 | -37.62 | -36.86 | 119. |
| hv/vv(dB) | NaN | -33.85 | -53.57 | -46.16 | 550. |
| hnjmp(dB) | | | -0.17 | | |
| vnjmp(dB) | | | -0.18 | | |