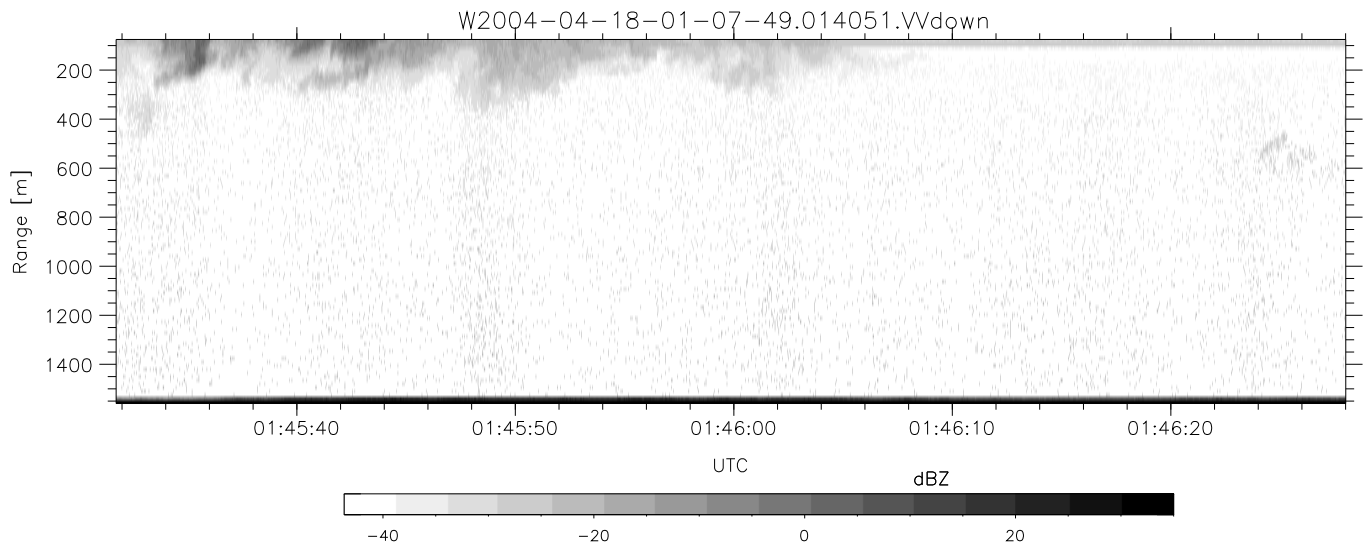
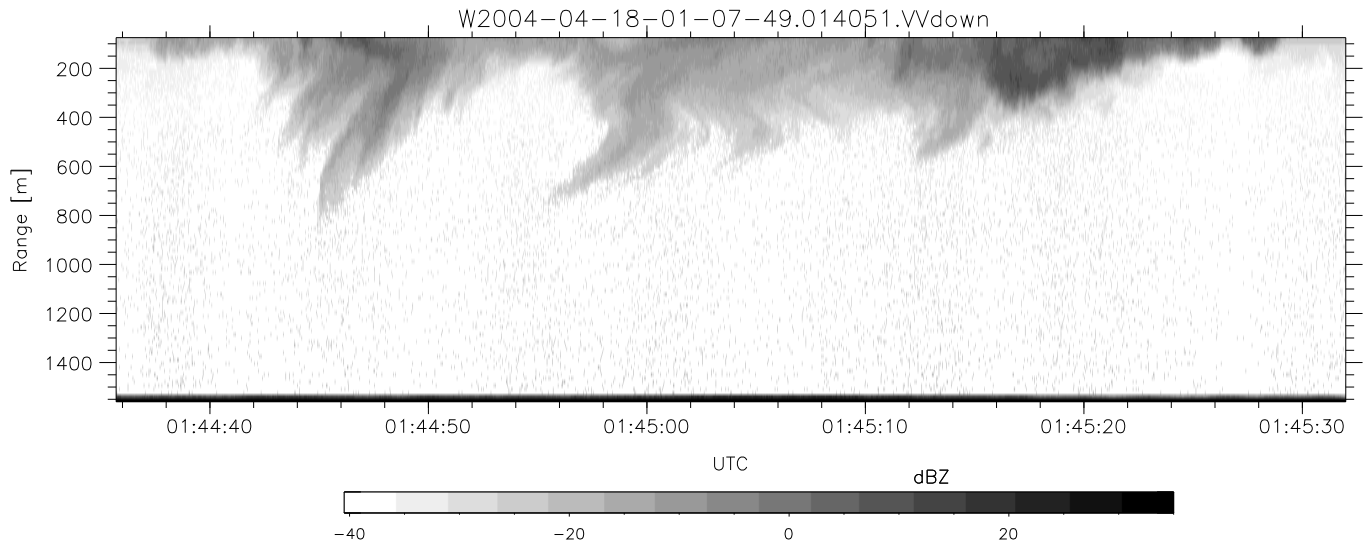
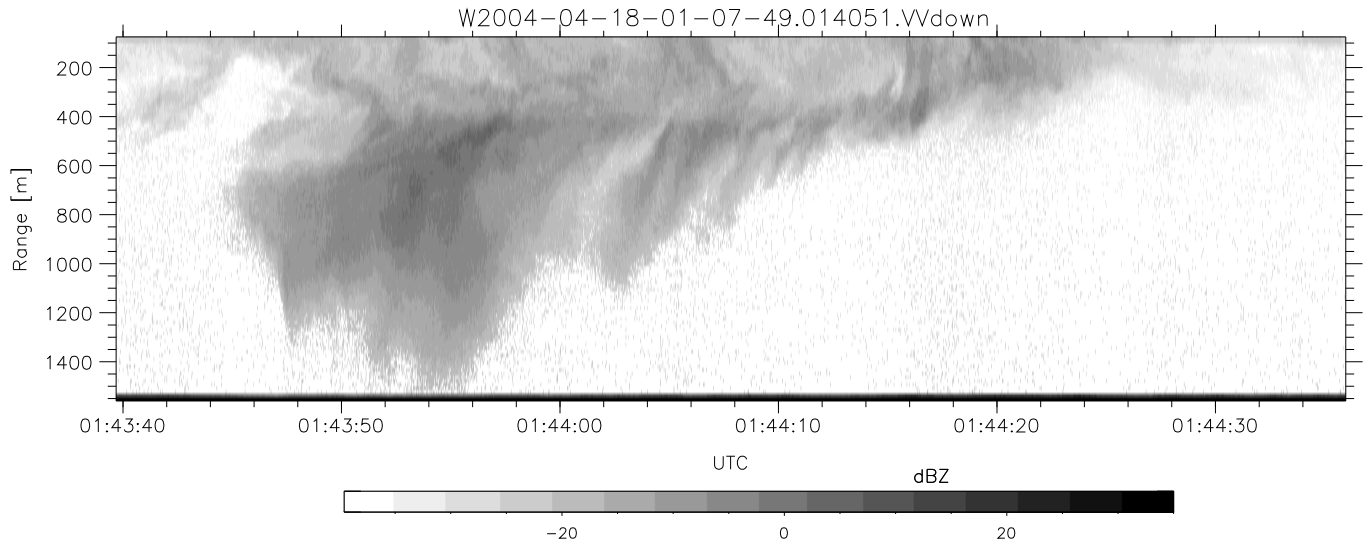


CIFEX 2004 Data (cal/250ns+2.5/100ns-3.5/500ns: 53.0,50.0)

W2004-04-18-01-07-49 - PPMAG4, IRIG:1/0/2
 UTC: 01:07:49.04 to 02:19:09.51, Dur: 4280s
 TimeLngth: 4280.54s, TimeInt: 28ms (35.4pps)
 TimeCor=-13.0s, PPS(min,max,med): 35,36,35
 Timeint/DSPdiff(mn,min,mx):28,28,28/28,28,28
 Prof: 378 to 152123, NumProf(r/t): 17571/151745
 ProcTime/Recs: 01:40:51-01:49:07/70284-87854
 ADacqtime: 25ms; DRate: 198.4KB/s; Flags: 0, 0, 0
 Pulse: 275ns, IFilt: 5.0MHz; ppPol: HH HV VV
 TxPol: HHV, PRF: 20 10 20 10 kHz, NoiseFlg:4,2
 Range: Delay 75m, Spacing 15m, Gates 100
 Ave. Pulses: 84, Rng/Prof Aspect@90m/s: 5.9

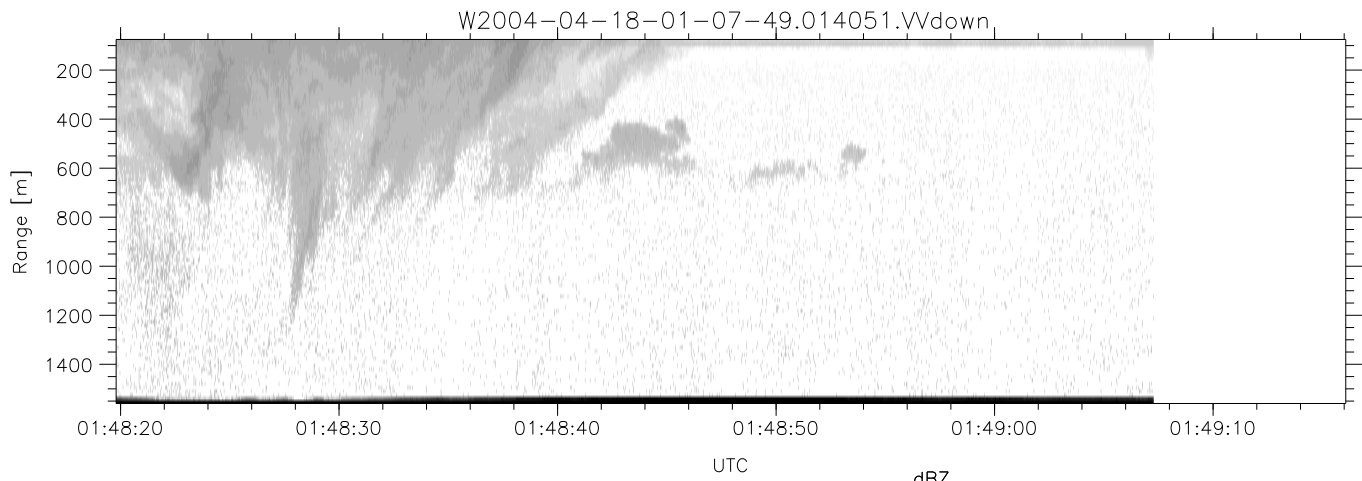
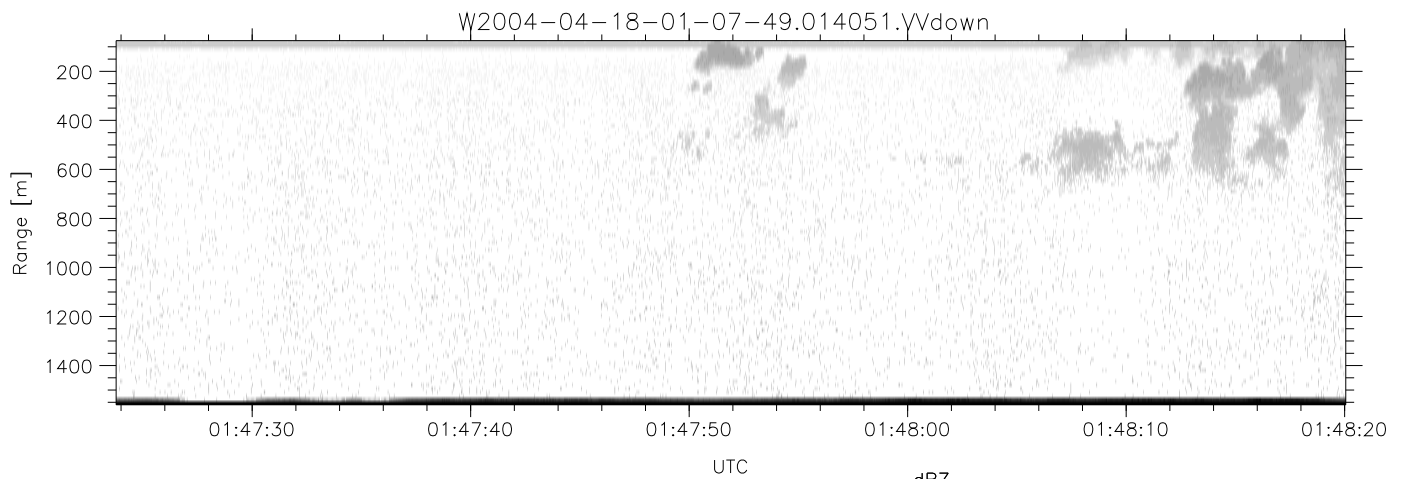
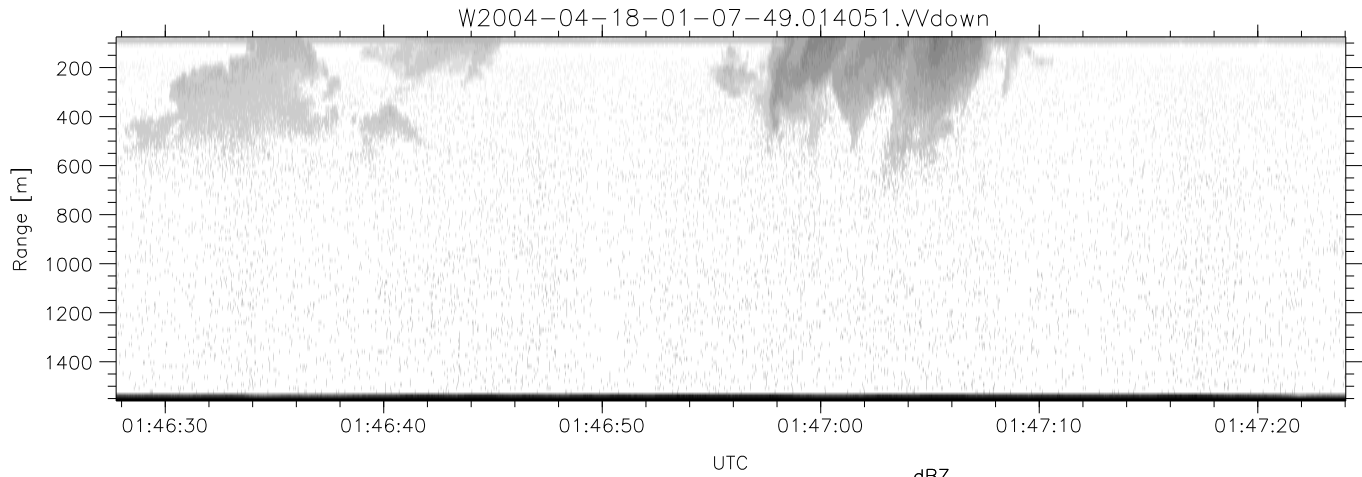
	Min	Max	Mean	Std	Varc%
hhN(dB)	-68.04	-64.56	-66.25	-76.25	10.0
vvN(dB)	-68.10	-64.77	-66.26	-76.21	10.1
hhL(dB)	-14.47	-6.41	-8.89	-16.28	18.2
vvL(dB)	-6.20	6.00	5.99	-9.86	2.6
ppN(m/s)	-12.09	12.65	-0.04	4.14	
ppT(m/s)	-95.50	99.93	-0.31	32.70	
hh/vv(dB)	NaN	67.93	NaN	51.76	-203
vh/hh(dB)	NaN	-27.30	-37.62	-36.86	119.
hv/vv(dB)	NaN	-33.85	-53.57	-46.16	550.
hnjmp(dB)			-0.17		
vnjmp(dB)			-0.18		



CIFEX 2004 Data (cal/250ns+2.5/100ns-3.5/500ns: 53.0,50.0)

W2004-04-18-01-07-49 - PPMAG4, IRIG:1/0/2
 UTC: 01:07:49.04 to 02:19:09.51, Dur: 4280s
 TimeLngth: 4280.54s, TimeInt: 28ms (35.4pps)
 TimeCor=-13.0s, PPS(min,max,med): 35,36,35
 Timeint/DSPdiff(mn,min,mx):28,28,28/28,28,28
 Prof: 378 to 152123, NumProf(r/t): 17571/151745
 ProcTime/Recs: 01:40:51-01:49:07/70284-87854
 ADacqtime: 25ms; DRate: 198.4KB/s; Flags: 0, 0, 0
 Pulse: 275ns, IFilt: 5.0MHz; ppPol: HH HV VV
 TxPol: HHVV, PRF: 20 10 20 10 kHz, Noiseflg:4,2
 Range: Delay 75m, Spacing 15m, Gates 100
 Ave. Pulses: 84, Rng/Prof Aspect@90m/s: 5.9

	Min	Max	Mean	Std	Varc%
hhN(dB)	-68.04	-64.56	-66.25	-76.25	10.0
vvN(dB)	-68.10	-64.77	-66.26	-76.21	10.1
hhL(dB)	-14.47	-6.41	-8.89	-16.28	18.2
vvL(dB)	-6.20	6.00	5.99	-9.86	2.6
ppN(m/s)	-12.09	12.65	-0.04	4.14	
ppT(m/s)	-95.50	99.93	-0.31	32.70	
hh/vv(dB)	NaN	67.93	NaN	51.76	-203
vh/hh(dB)	NaN	-27.30	-37.62	-36.86	119.
hv/vv(dB)	NaN	-33.85	-53.57	-46.16	550.
hnjmp(dB)			-0.17		
vnjmp(dB)			-0.18		



CIFEX 2004 Data (cal/250ns+2.5/100ns-3.5/500ns: 53.0,50.0)

W2004-04-18-01-07-49 - PPMAG4, IRIG:1/0/2
 UTC: 01:07:49.04 to 02:19:09.51, Dur: 4280s
 TimeLngth: 4280.54s, TimeInt: 28ms (35.4pps)
 TimeCor=-13.0s, PPS(min,max,med): 35,36,35
 Timeint/DSPdiff(mn,min,mx):28,28,28/28,28,28
 Prof: 378 to 152123, NumProf(r/t): 17571/151745
 ProcTime/Recs: 01:40:51-01:49:07/70284-87854
 ADacqtime: 25ms; DRate: 198.4KB/s; Flags: 0, 0, 0
 Pulse: 275ns, IFfilt: 5.0MHz; ppPol: HH HV VV
 TxPol: HHVV, PRF: 20 10 20 10 kHz, NoiseFlg:4,2
 Range: Delay 75m, Spacing 15m, Gates 100
 Ave. Pulses: 84, Rng/Prof Aspect@90m/s: 5.9

	Min	Max	Mean	Std	Varc%
hhN (dB)	-68.04	-64.56	-66.25	-76.25	10.0
vvN (dB)	-68.10	-64.77	-66.26	-76.21	10.1
hhL (dB)	-14.47	-6.41	-8.89	-16.28	18.2
vvL (dB)	-6.20	6.00	5.99	-9.86	2.6
ppN (m/s)	-12.09	12.65	-0.04	4.14	
ppT (m/s)	-95.50	99.93	-0.31	32.70	
hh/vv (dB)	NaN	67.93	NaN	51.76	-203
vh/hh (dB)	NaN	-27.30	-37.62	-36.86	119.
hv/vv (dB)	NaN	-33.85	-53.57	-46.16	550.
hnjmp (dB)			-0.17		
vnjmp (dB)			-0.18		