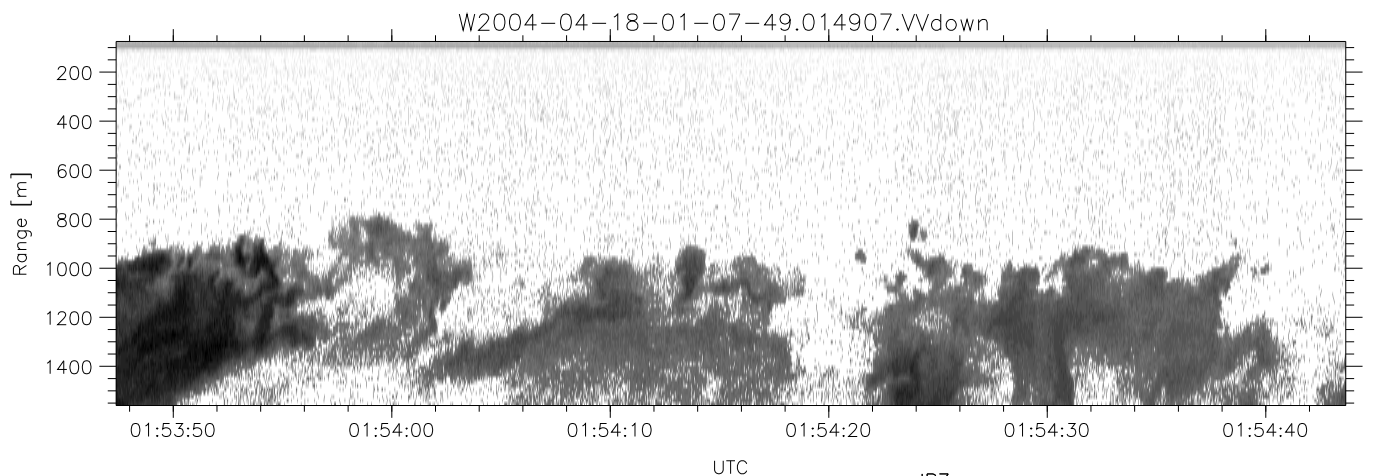
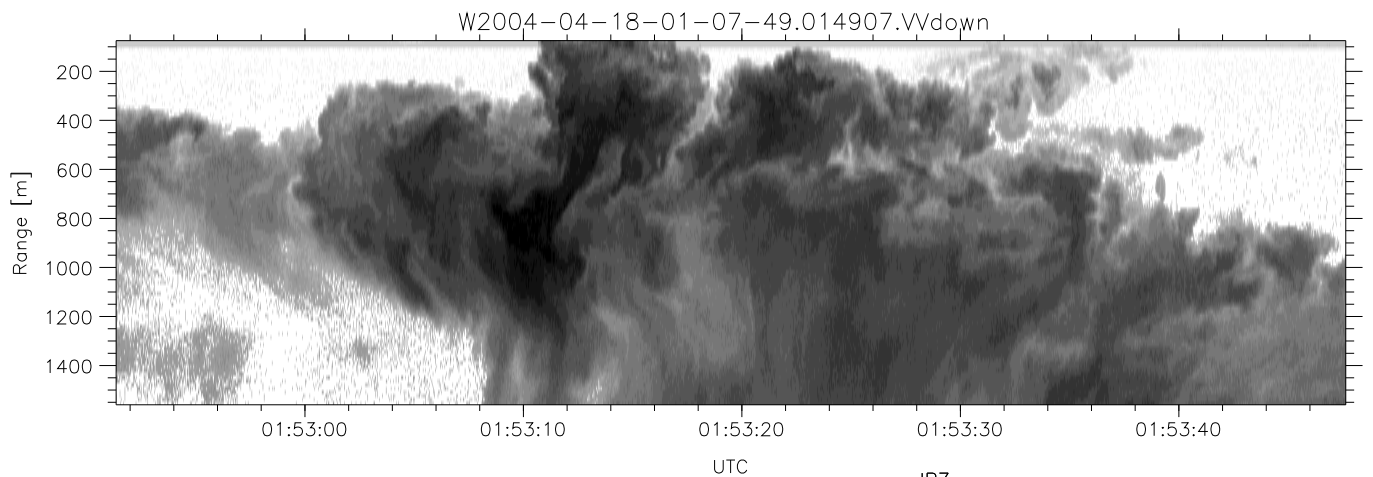
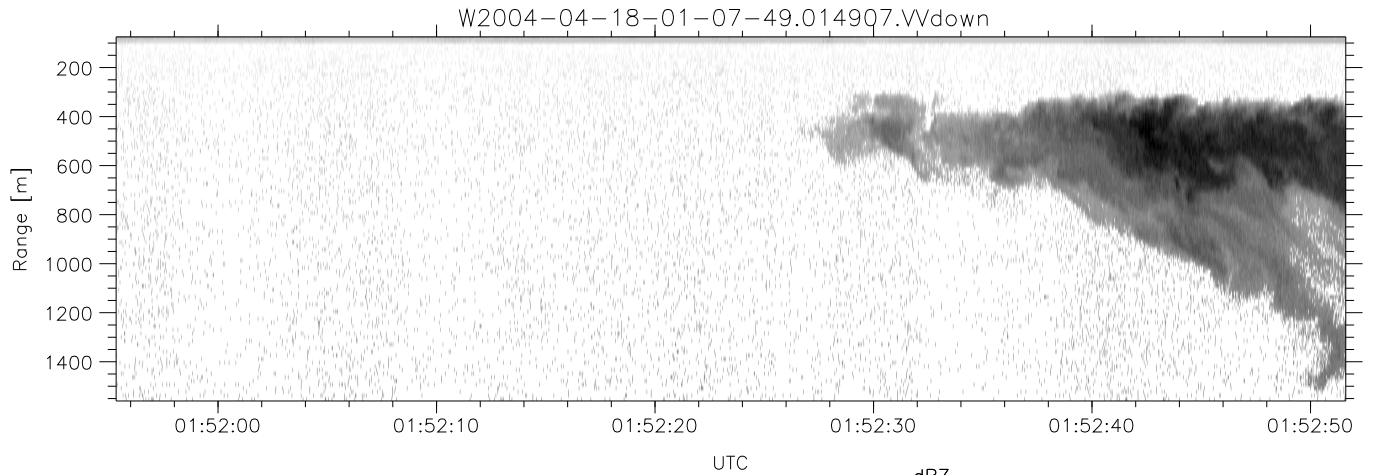


CIFEX 2004 Data (cal/250ns+2.5/100ns-3.5/500ns: 53.0,50.0)

W2004-04-18-01-07-49 - PPMAG4, IRIG:1/0/2  
 UTC: 01:07:49.04 to 02:19:09.51, Dur: 4280s  
 TimeLngth: 4280.54s, TimeInt: 28ms (35.4pps)  
 TimeCor=-13.0s, PPS(min,max,med): 35,36,35  
 Timeint/DSPdiff(mn,min,mx):28,28,31/28,28,28  
 Prof: 378 to 152123, NumProf(r/t): 17571/151745  
 ProcTime/Recs: 01:49:07-01:57:22/87855-105425  
 ADacqtime: 25ms; DRate: 198.4KB/s; Flags: 0, 0, 0  
 Pulse: 275ns, IFfilt: 5.0MHz; ppPol: HH HV VV  
 TxPol: HHVV, PRF: 20 10 20 10 kHz, Noiseflg:4,1  
 Range: Delay 75m, Spacing 15m, Gates 100  
 Ave. Pulses: 84, Rng/Prof Aspect@90m/s: 5.9

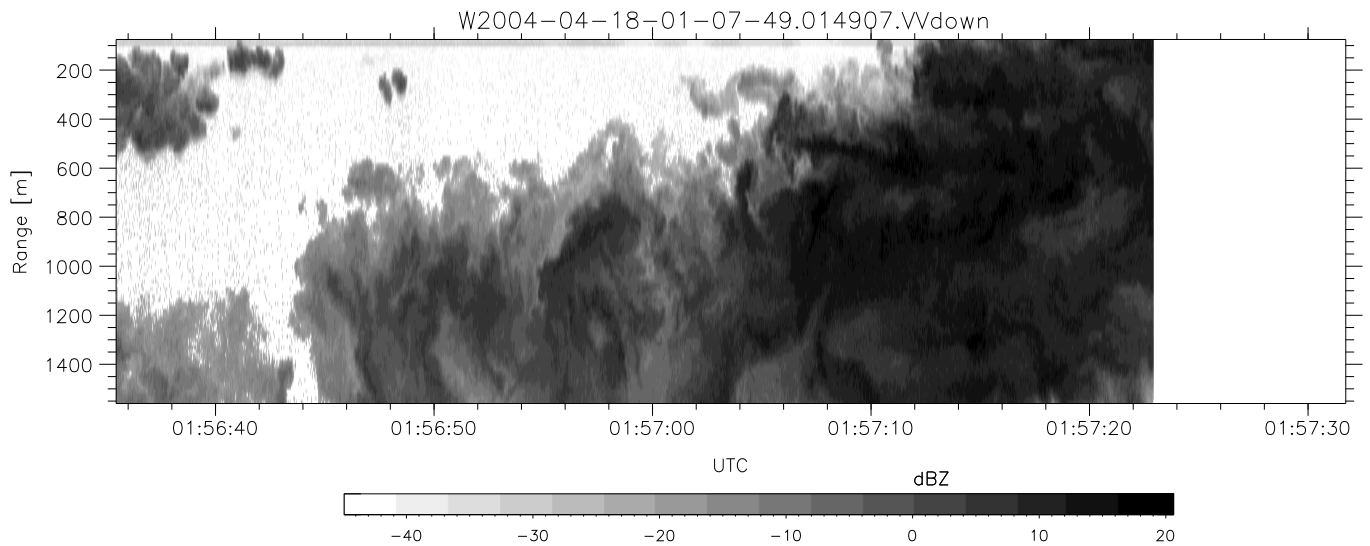
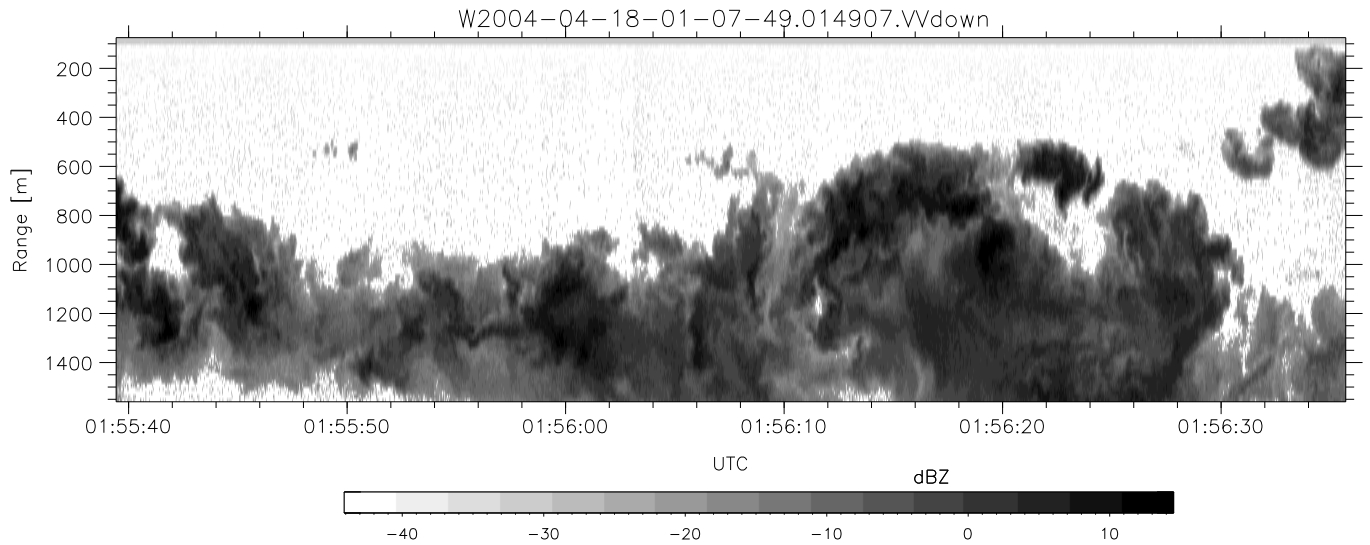
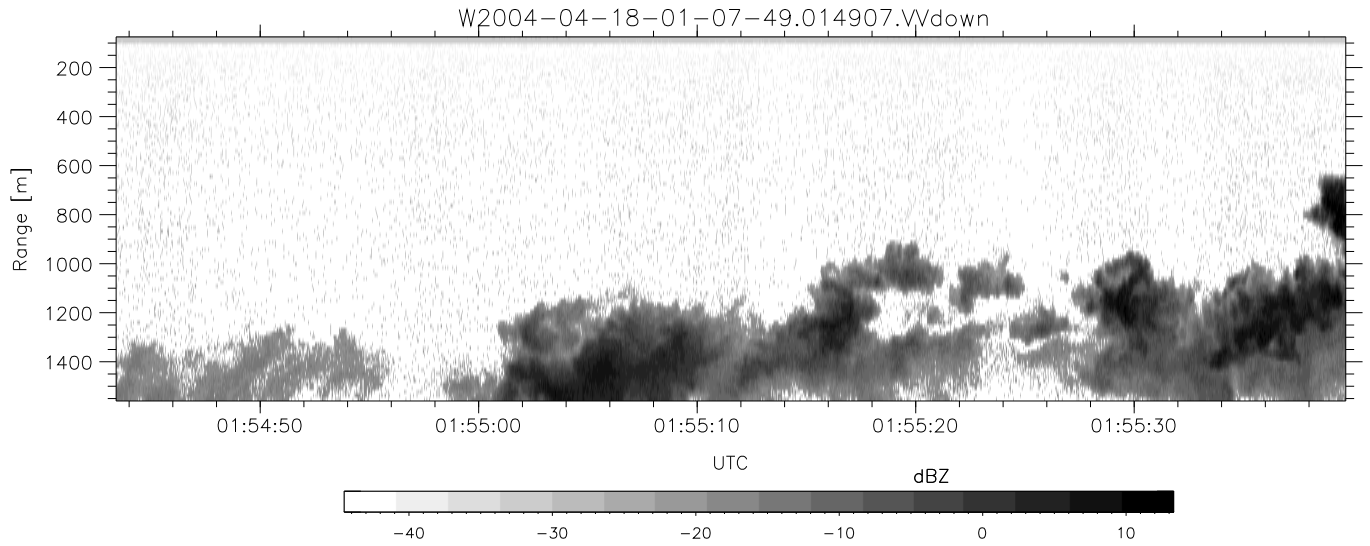
	Min	Max	Mean	Std	Varc%
hhN (dB)	-68.09	-64.41	-66.24	-76.23	10.0
vvN (dB)	-68.16	-64.74	-66.26	-76.13	10.3
hhL (dB)	-13.45	2.89	-1.00	-2.63	68.6
vvL (dB)	-10.81	6.00	4.20	0.96	47.5
ppN (m/s)	-12.65	12.26	-0.06	4.18	
ppT (m/s)	-99.92	96.86	-0.45	33.03	
hh/vv (dB)	NaN	33.59	11.42	22.46	1269
vh/hh (dB)	-99	-99	-99	-99	-99
hv/vv (dB)	NaN	-34.29	-49.74	-43.74	398.
hn_jmp (dB)			0.17		
vn_jmp (dB)			0.17		



CIFEX 2004 Data (cal/250ns+2.5/100ns-3.5/500ns: 53.0,50.0)

W2004-04-18-01-07-49 - PPMAG4, IRIG:1/0/2  
 UTC: 01:07:49.04 to 02:19:09.51, Dur: 4280s  
 TimeLngth: 4280.54s, TimeInt: 28ms (35.4pps)  
 TimeCor=-13.0s, PPS(min,max,med): 35,36,35  
 Timeint/DSPdiff(mn,min,mx):28,28,31/28,28,28  
 Prof: 378 to 152123, NumProf(r/t): 17571/151745  
 ProcTime/Recs: 01:49:07-01:57:22/87855-105425  
 ADacqtime: 25ms; DRate: 198.4KB/s; Flags: 0, 0, 0  
 Pulse: 275ns, IFilt: 5.0MHz; ppPol: HH HV VV  
 TxPol: HHVV, PRF: 20 10 20 10 kHz, NoiseFlg:4,1  
 Range: Delay 75m, Spacing 15m, Gates 100  
 Ave. Pulses: 84, Rng/Prof Aspect@90m/s: 5.9

	Min	Max	Mean	Std	Varc%
hhN (dB)	-68.09	-64.41	-66.24	-76.23	10.0
vvN (dB)	-68.16	-64.74	-66.26	-76.13	10.3
hhL (dB)	-13.45	2.89	-1.00	-2.63	68.6
vvL (dB)	-10.81	6.00	4.20	0.96	47.5
ppN (m/s)	-12.65	12.26	-0.06	4.18	
ppT (m/s)	-99.92	96.86	-0.45	33.03	
hh/vv (dB)	NaN	33.59	11.42	22.46	1269
vh/hh (dB)	-99	-99	-99	-99	-99
hv/vv (dB)	NaN	-34.29	-49.74	-43.74	398.
hnj (dB)			0.17		
vnj (dB)			0.17		



CIFEX 2004 Data (cal/250ns+2.5/100ns-3.5/500ns: 53.0,50.0)

W2004-04-18-01-07-49 - PPMAG4, IRIG:1/0/2  
 UTC: 01:07:49.04 to 02:19:09.51, Dur: 4280s  
 TimeLngth: 4280.54s, TimeInt: 28ms (35.4pps)  
 TimeCor=-13.0s, PPS(min,max,med): 35,36,35  
 Timeint/DSPdiff(mn,min,mx):28,28,31/28,28,28  
 Prof: 378 to 152123, NumProf(r/t): 17571/151745  
 ProcTime/Recs: 01:49:07-01:57:22/87855-105425  
 ADacqtime: 25ms; DRate: 198.4KB/s; Flags: 0, 0, 0  
 Pulse: 275ns, IFilt: 5.0MHz; ppPol: HH HV VV  
 TxPol: HHV, PRF: 20 10 20 10 kHz, NoiseFlg:4,1  
 Range: Delay 75m, Spacing 15m, Gates 100  
 Ave. Pulses: 84, Rng/Prof Aspect@90m/s: 5.9

	Min	Max	Mean	Std	Varc%
hhN(dB)	-68.09	-64.41	-66.24	-76.23	10.0
vvN(dB)	-68.16	-64.74	-66.26	-76.13	10.3
hhL(dB)	-13.45	2.89	-1.00	-2.63	68.6
vvL(dB)	-10.81	6.00	4.20	0.96	47.5
ppN(m/s)	-12.65	12.26	-0.06	4.18	
ppT(m/s)	-99.92	96.86	-0.45	33.03	
hh/vv(dB)	NaN	33.59	11.42	22.46	1269
vh/hh(dB)	-99	-99	-99	-99	-99
hv/vv(dB)	NaN	-34.29	-49.74	-43.74	398.
hnjmp(dB)			0.17		
vnjmp(dB)			0.17		