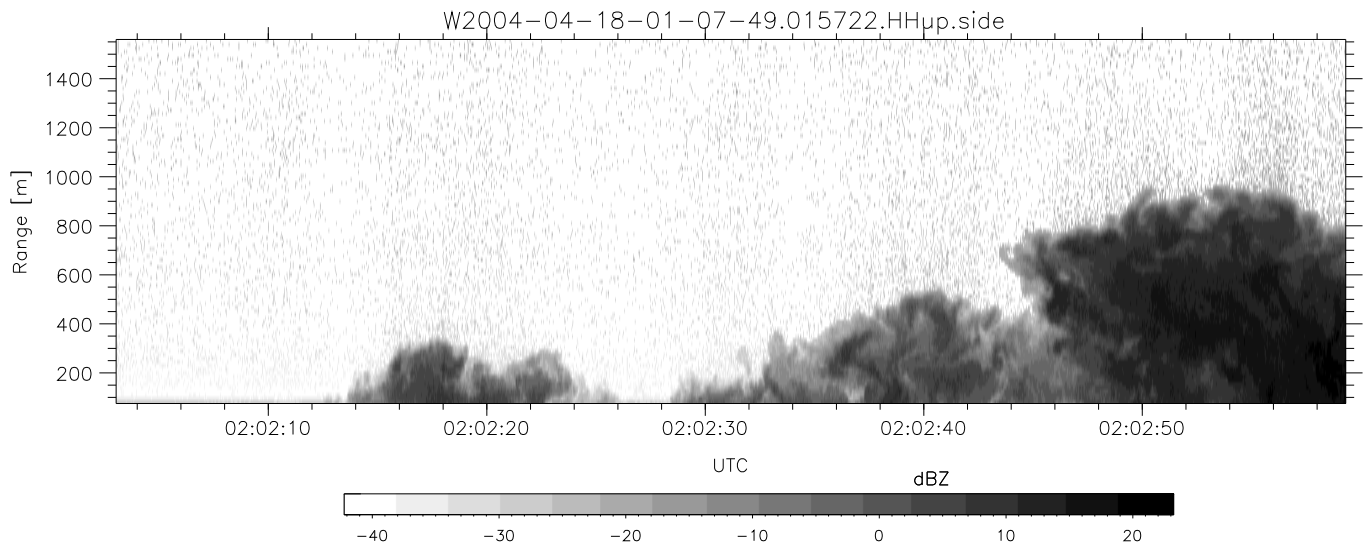
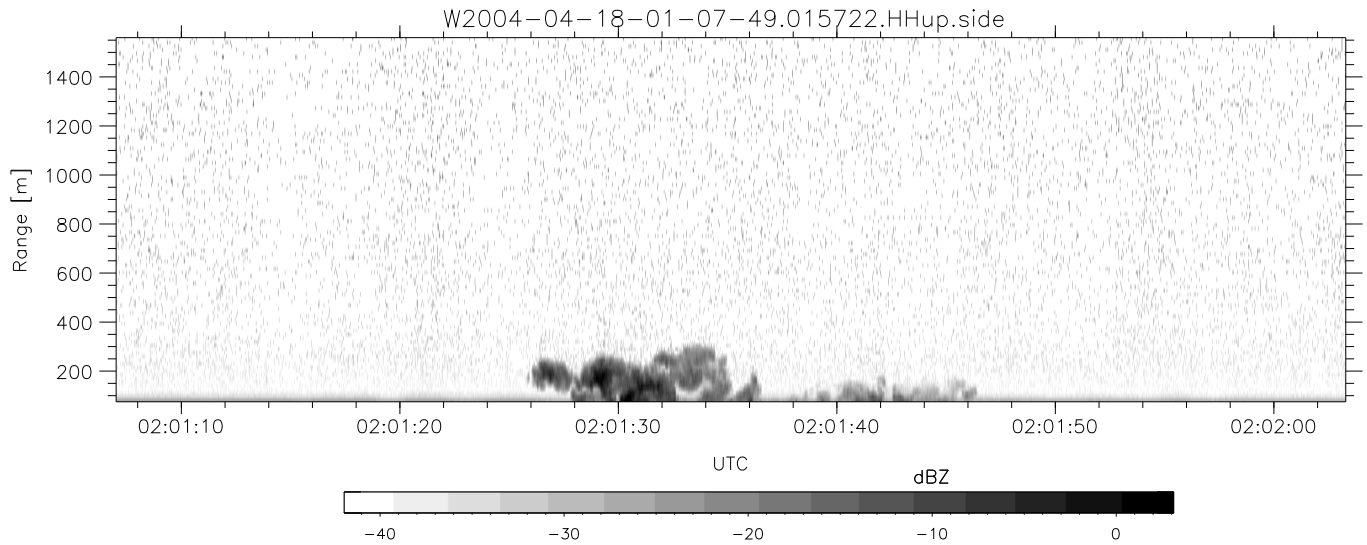
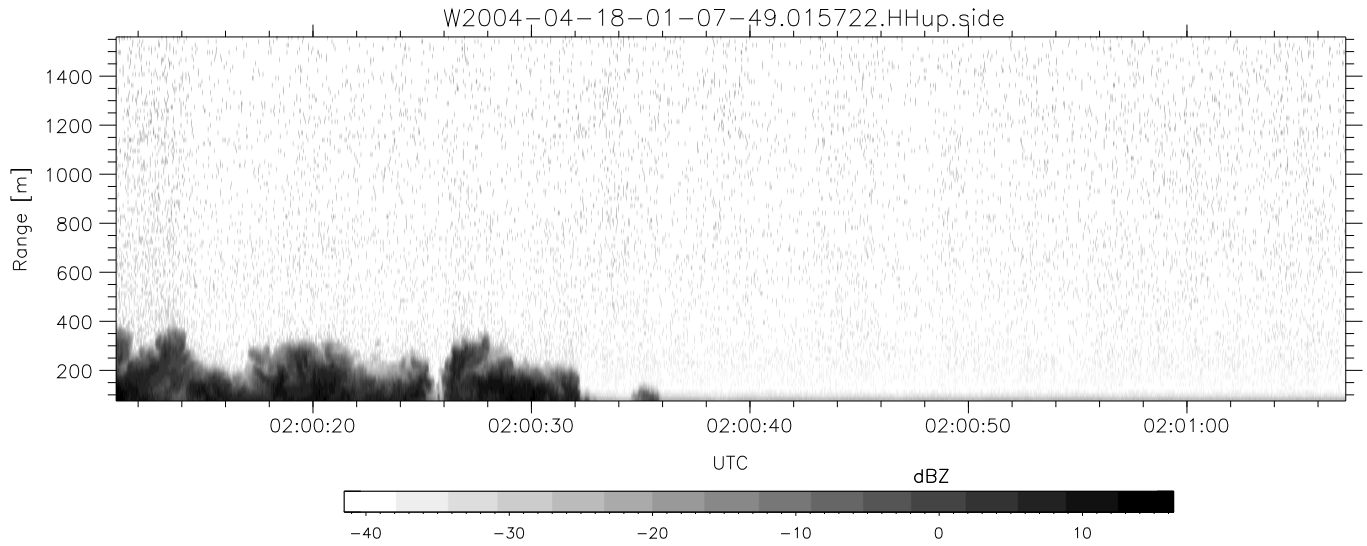


CIFEX 2004 Data (cal/250ns+2.5/100ns-3.5/500ns: 53.0,50.0)

W2004-04-18-01-07-49 - PPMAG4, IRIG:1/0/2
 UTC: 01:07:49.04 to 02:19:09.51, Dur: 4280s
 TimeLngth: 4280.54s, TimeInt: 28ms (35.4pps)
 TimeCor=-13.0s, PPS(min,max,med): 35,36,35
 Timeint/DSPdiff(mn,min,mx):28,28,28/28,28,28
 Prof: 378 to 152123, NumProf(r/t): 17571/151745
 ProcTime/Recs: 01:57:22-02:05:38/105426-122996
 ADacqtime: 25ms; DRate: 198.4KB/s; Flags: 0, 0, 0
 Pulse: 275ns, IFilt: 5.0MHz; ppPol: HH HV VV
 TxPol: HHVV, PRF: 20 10 20 10 kHz, NoiseFlg:4,3
 Range: Delay 75m, Spacing 15m, Gates 100
 Ave. Pulses: 84, Rng/Prof Aspect@90m/s: 5.9

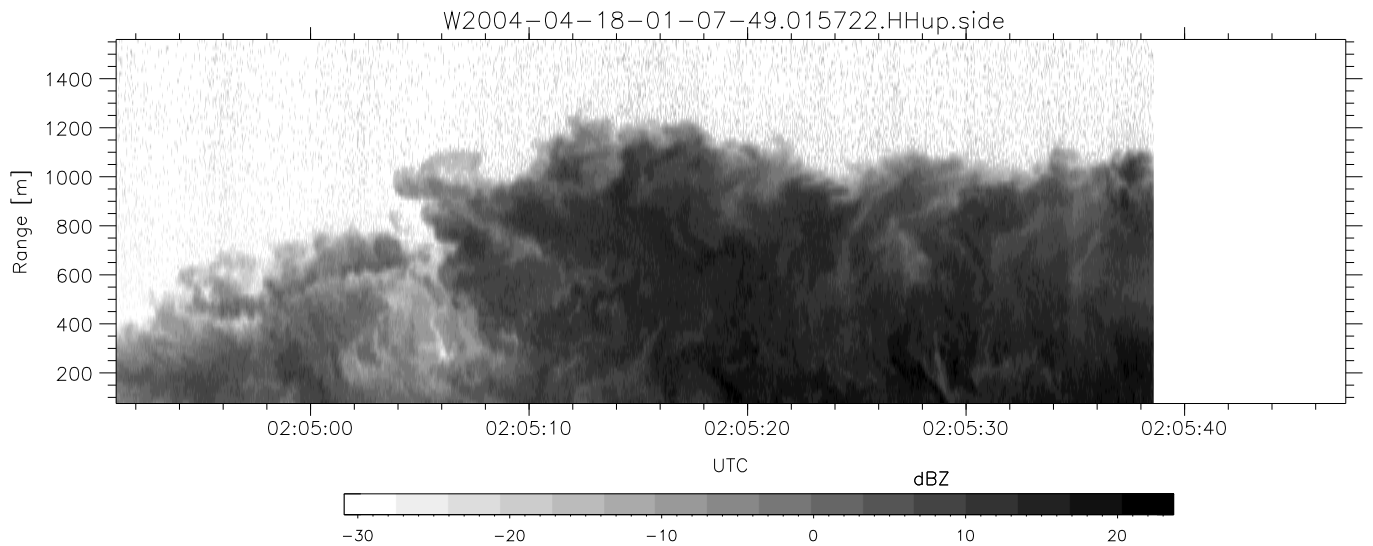
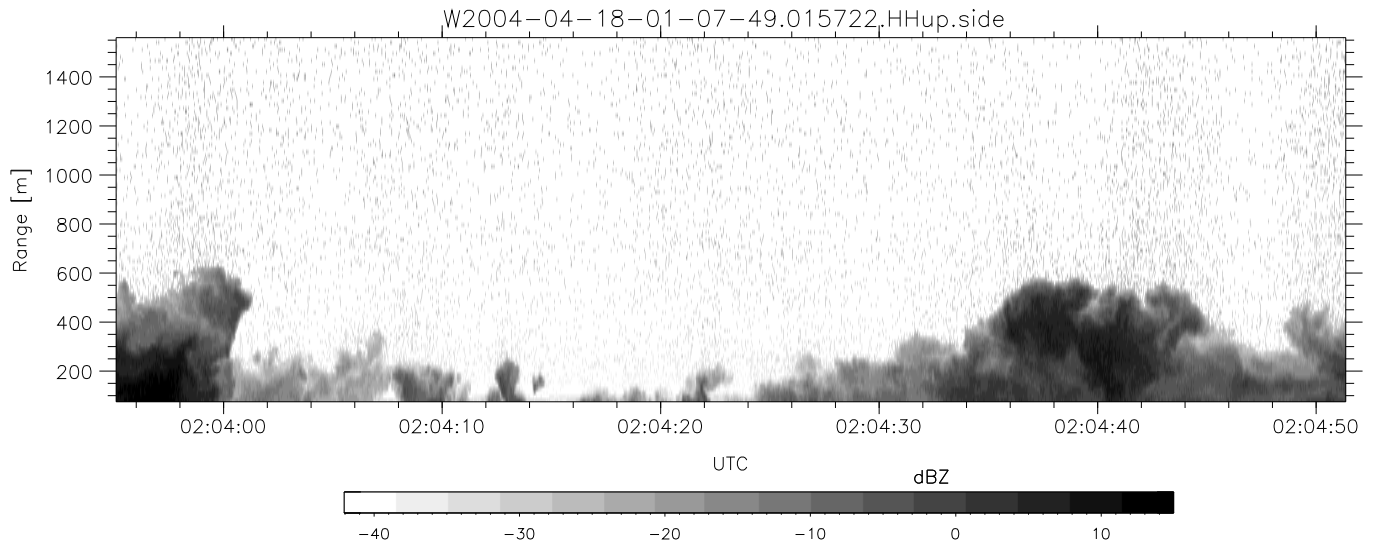
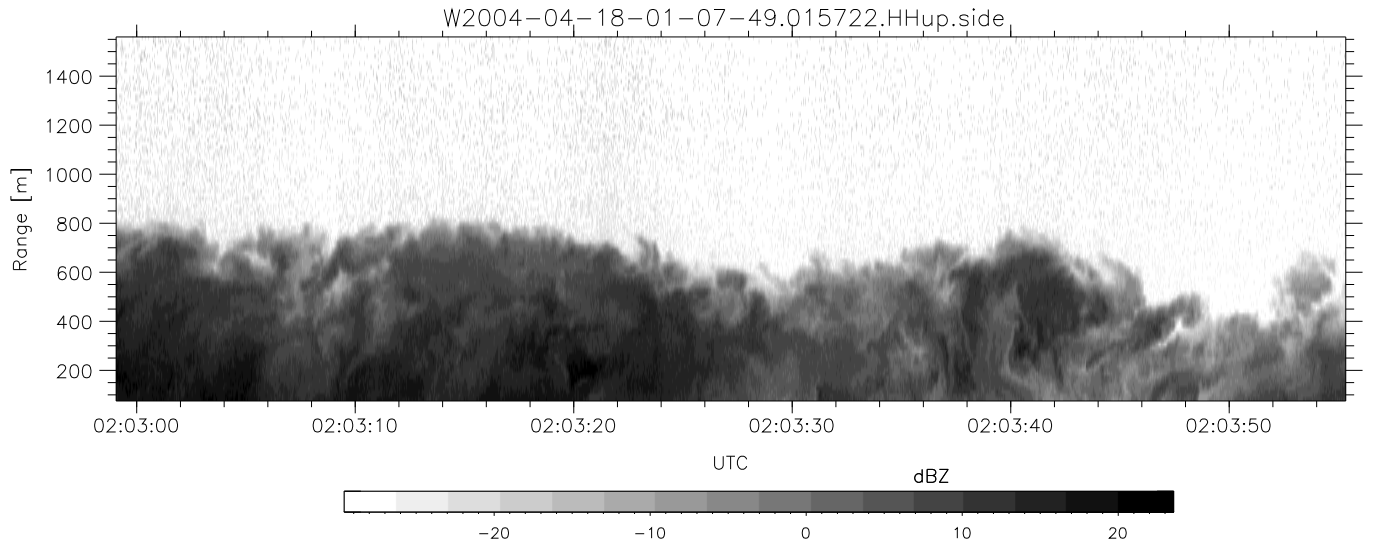
	Min	Max	Mean	Std	Varc%
hhN (dB)	-68.12	-64.35	-66.18	-76.16	10.1
vvN (dB)	-68.06	-64.51	-66.18	-76.07	10.2
hhL (dB)	-18.11	1.44	-3.02	-4.41	72.5
vvL (dB)	-15.38	6.00	-1.87	-2.79	81.0
ppN (m/s)	-12.45	12.40	-0.06	4.11	
ppT (m/s)	-98.34	97.98	-0.47	32.48	
hh/vv (dB)	NaN	83.25	31.13	56.51	3455
vh/hh (dB)	NaN	-23.87	-40.00	-37.56	175.
hv/vv (dB)	NaN	-32.35	-48.27	-43.80	280.
hnjmp (dB)			-0.16		
vnjmp (dB)			-0.17		



CIFEX 2004 Data (cal/250ns+2.5/100ns-3.5/500ns: 53.0,50.0)

W2004-04-18-01-07-49 - PPMAG4, IRIG:1/0/2
 UTC: 01:07:49.04 to 02:19:09.51, Dur: 4280s
 TimeLngth: 4280.54s, TimeInt: 28ms (35.4pps)
 TimeCor=-13.0s, PPS(min,max,med): 35,36,35
 Timeint/DSPdiff(mn,min,mx):28,28,28/28,28,28
 Prof: 378 to 152123, NumProf(r/t): 17571/151745
 ProcTime/Recs: 01:57:22-02:05:38/105426-122996
 ADacqtime: 25ms; DRate: 198.4KB/s; Flags: 0, 0, 0
 Pulse: 275ns, IFilt: 5.0MHz; ppPol: HH HV VV
 TxPol: HHVV, PRF: 20 10 20 10 kHz, NoiseFlg:4,3
 Range: Delay 75m, Spacing 15m, Gates 100
 Ave. Pulses: 84, Rng/Prof Aspect@90m/s: 5.9

	Min	Max	Mean	Std	Varc%
hhN(dB)	-68.12	-64.35	-66.18	-76.16	10.1
vvN(dB)	-68.06	-64.51	-66.18	-76.07	10.2
hhL(dB)	-18.11	1.44	-3.02	-4.41	72.5
vvL(dB)	-15.38	6.00	-1.87	-2.79	81.0
ppN(m/s)	-12.45	12.40	-0.06	4.11	
ppT(m/s)	-98.34	97.98	-0.47	32.48	
hh/vv(dB)	NaN	83.25	31.13	56.51	3455
vh/hh(dB)	NaN	-23.87	-40.00	-37.56	175.
hv/vv(dB)	NaN	-32.35	-48.27	-43.80	280.
hnjmb(dB)			-0.16		
vnjmb(dB)			-0.17		



CIFEX 2004 Data (cal/250ns+2.5/100ns-3.5/500ns: 53.0,50.0)

W2004-04-18-01-07-49 - PPMAG4, IRIG:1/0/2
 UTC: 01:07:49.04 to 02:19:09.51, Dur: 4280s
 TimeLngth: 4280.54s, TimeInt: 28ms (35.4pps)
 TimeCor=-13.0s, PPS(min,max,med): 35,36,35
 Timeint/DSPdiff(mn,min,mx):28,28,28/28,28,28
 Prof: 378 to 152123, NumProf(r/t): 17571/151745
 ProcTime/Recs: 01:57:22-02:05:38/105426-122996
 ADacqtime: 25ms; DRate: 198.4KB/s; Flags: 0, 0, 0
 Pulse: 275ns, IFilt: 5.0MHz; ppPol: HH HV VV
 TxPol: HHVV, PRF: 20 10 20 10 kHz, NoiseFlg:4,3
 Range: Delay 75m, Spacing 15m, Gates 100
 Ave. Pulses: 84, Rng/Prof Aspect@90m/s: 5.9

	Min	Max	Mean	Std	Varc%
hhN (dB)	-68.12	-64.35	-66.18	-76.16	10.1
vvN (dB)	-68.06	-64.51	-66.18	-76.07	10.2
hhL (dB)	-18.11	1.44	-3.02	-4.41	72.5
vvL (dB)	-15.38	6.00	-1.87	-2.79	81.0
ppN (m/s)	-12.45	12.40	-0.06	4.11	
ppT (m/s)	-98.34	97.98	-0.47	32.48	
hh/vv (dB)	NaN	83.25	31.13	56.51	3455
vh/hh (dB)	NaN	-23.87	-40.00	-37.56	175.
hv/vv (dB)	NaN	-32.35	-48.27	-43.80	280.
hnjmp (dB)			-0.16		
vnjmp (dB)			-0.17		