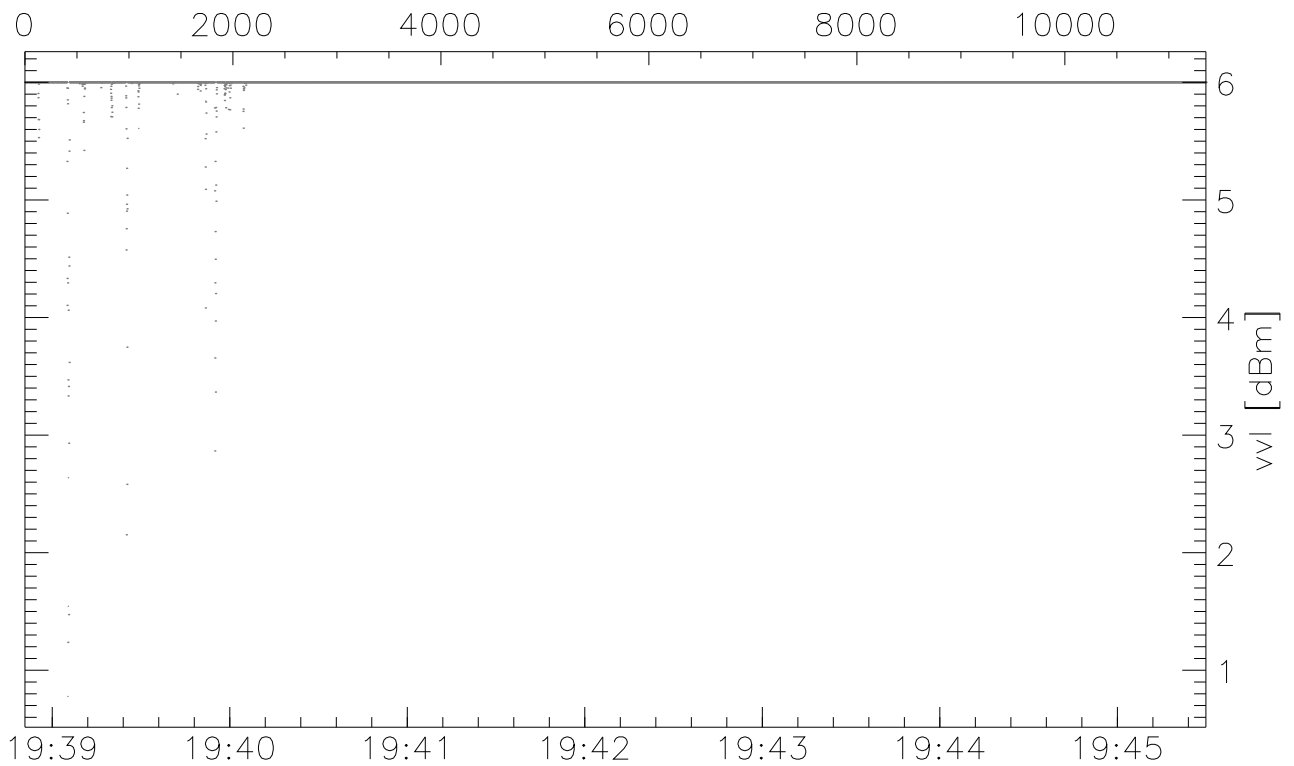
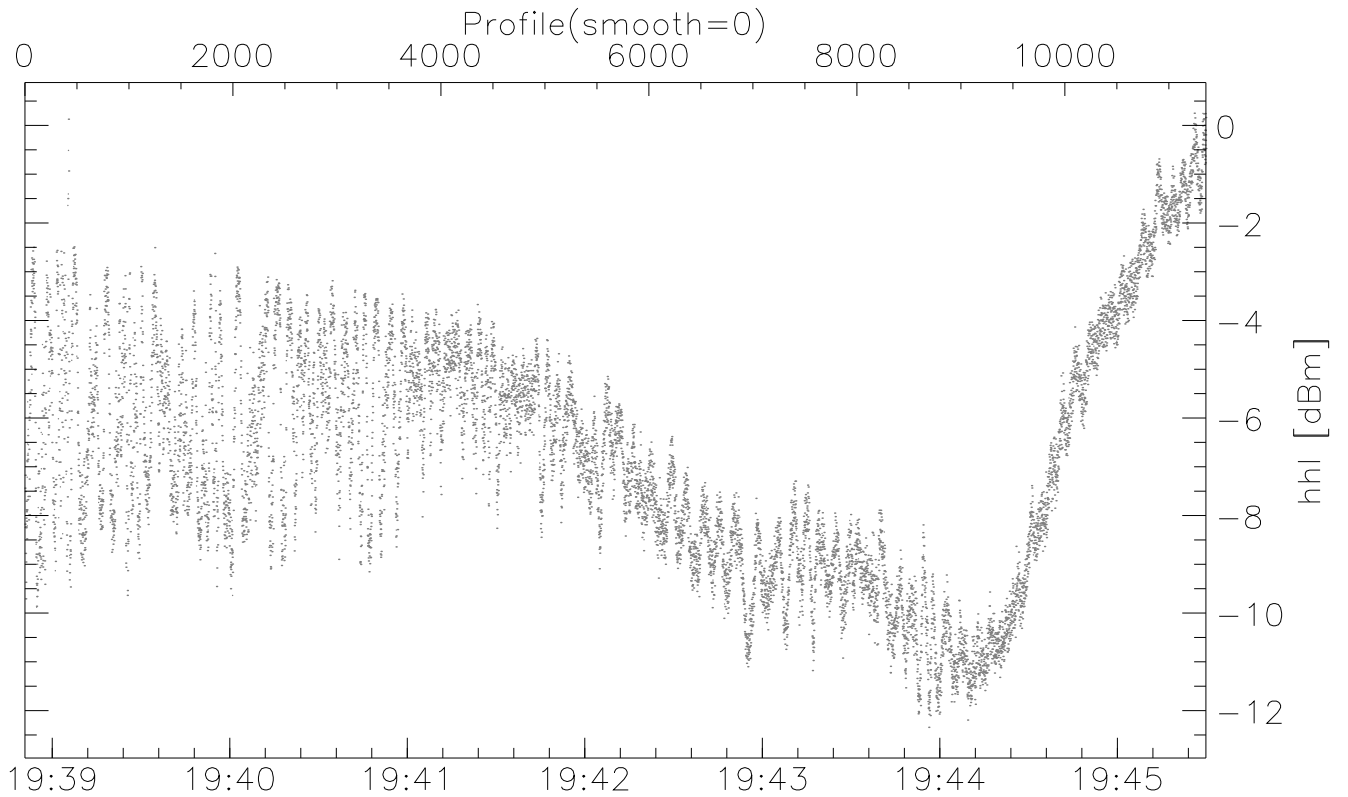


CIFEX 2004

W2004-04-18-19-29-00 - SPPMAG, IRIG:1/0/0
 UTC: 19:29:00.28 to 19:45:29.92, Dur: 989s
 TimeLngth: 989.62s, TimeInt: 35ms (28.5pps)
 TimeCor=-13.0s, PPS(min,max,med): 28,29,28
 Timeint/DSPdiff(mn,min,mx):35,35,35/35,35,35
 Prof: 632 to 28789, NumProf(r/t): 11357/28157
 ProcTime/Recs: 19:38:50-19:45:29/16800-28156
 ADacqtime: 32ms; DRate: 45.9KB/s; Flags: 0, 0, 0
 Pulse: 275ns, IFfilt: 5.0MHz; ppPol: HH
 TxPol: H, PRF: 20 20 20 10 kHz, NoiseFlg:1234
 Range: Delay 75m, Spacing 30m, Gates 100
 Ave. Pulses: 520, Rng/Prof Aspect@90m/s: 9.5

	Min	Max	Mean	Std	Varc%
hhN(dB)	-65.83	-63.88	-64.97	-76.74	6.6
vvN(dB)	-66.04	-64.40	-65.28	-78.30	5.0
hhL(dB)	-12.34	0.25	-6.03	-8.03	63.1
vhL(dB)	0.78	6.00	5.99	-10.17	2.4
ppN(m/s)	-15.79	15.80	-0.43	7.88	
ppT(m/s)	-0.07	0.03	-0.02	0.01	
vh/hh(dB)	NaN	-30.62	-35.62	-37.27	68.3
hnjmp(dB)			-0.16		
vnjmp(dB)			-0.16		

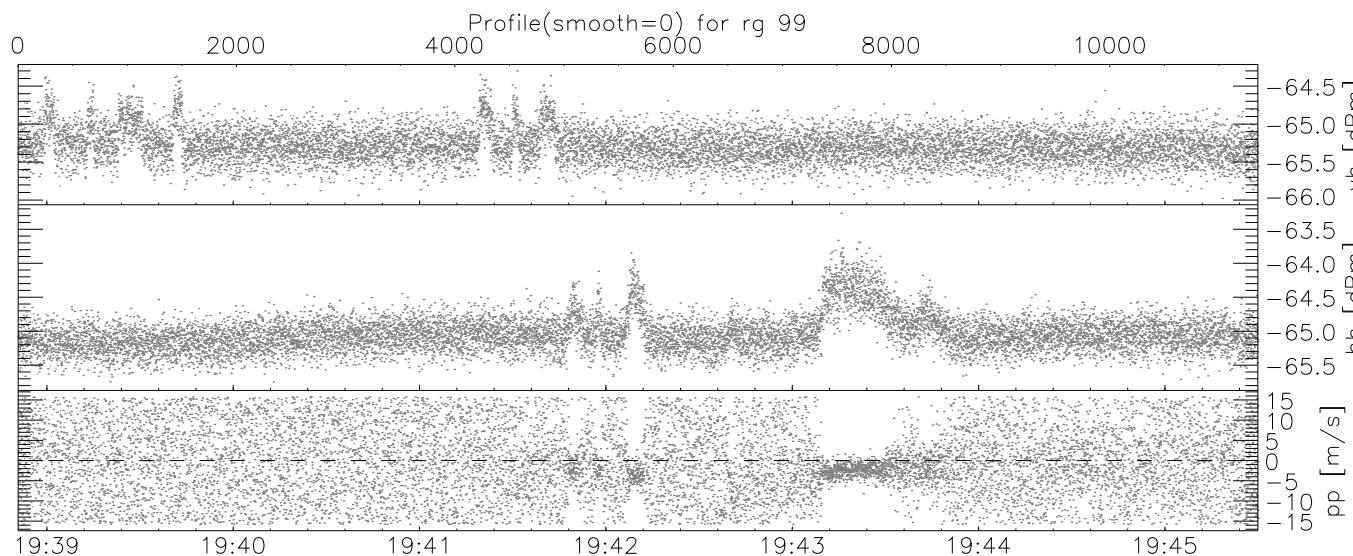
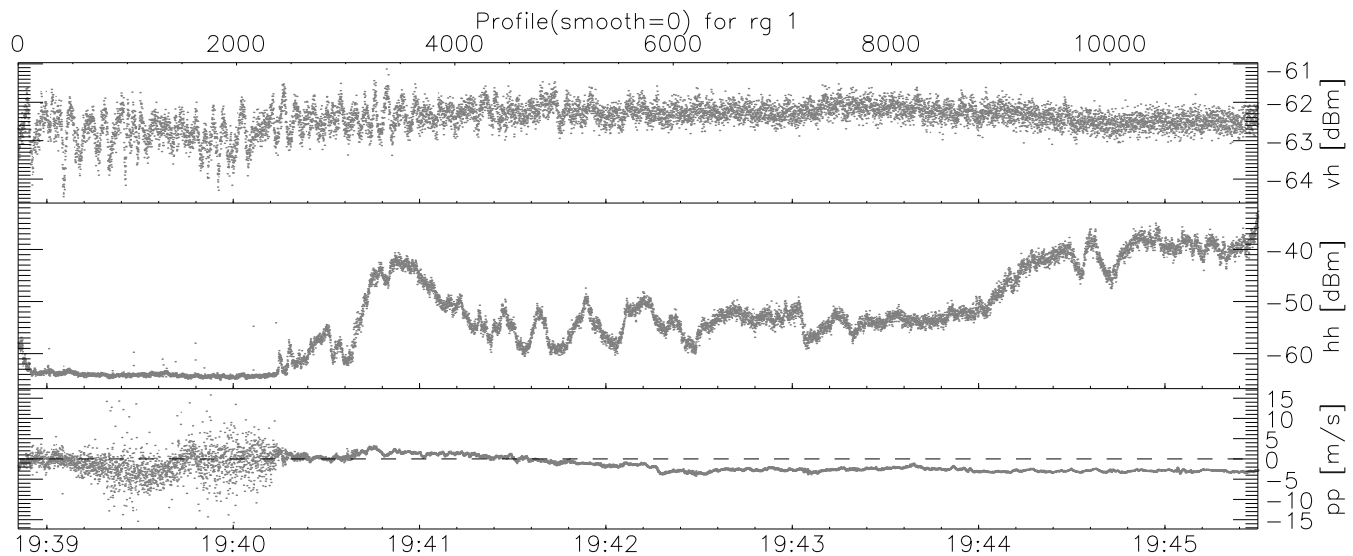
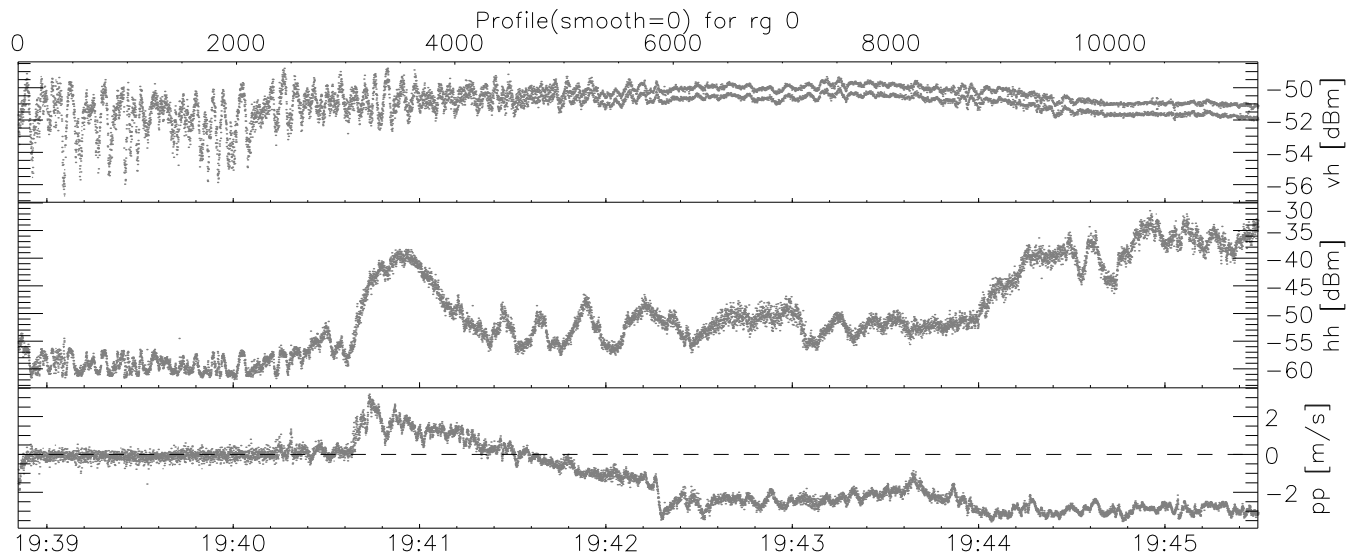


UTC

CIFEX 2004

W2004-04-18-19-29-00 - SPPMAG, IRIG:1/0/0
 UTC: 19:29:00.28 to 19:45:29.92, Dur: 989s
 TimeLngth: 989.62s, TimeInt: 35ms (28.5pps)
 TimeCor=-13.0s, PPS(min,max,med): 28,29,28
 Timeint/DSPdiff(mn,min,mx):35,35,35/35,35,35
 Prof: 632 to 28789, NumProf(r/t): 11357/28157
 ProcTime/Recs: 19:38:50-19:45:29/16800-28156
 ADacqtime: 32ms; DRate: 45.9KB/s; Flags: 0, 0, 0
 Pulse: 275ns, IFfilt: 5.0MHz; ppPol: HH
 TxPol: H, PRF: 20 20 20 10 kHz, NoiseFlg:1234
 Range: Delay 75m, Spacing 30m, Gates 100
 Ave. Pulses: 520, Rng/Prof Aspect@90m/s: 9.5

	Min	Max	Mean	Std	Varc%
hhN(dB)	-65.83	-63.88	-64.97	-76.74	6.6
vvN(dB)	-66.04	-64.40	-65.28	-78.30	5.0
hhL(dB)	-12.34	0.25	-6.03	-8.03	63.1
vhL(dB)	0.78	6.00	5.99	-10.17	2.4
ppN(m/s)	-15.79	15.80	-0.43	7.88	
ppT(m/s)	-0.07	0.03	-0.02	0.01	
vh/hh(dB)	NaN	-30.62	-35.62	-37.27	68.3
hnjmp(dB)			-0.16		
vnjmp(dB)			-0.16		



UTC

CIFEX 2004

W2004-04-18-19-29-00 - SPPMAG, IRIG:1/0/0
 UTC: 19:29:00.28 to 19:45:29.92, Dur: 989s
 TimeLngth: 989.62s, TimeInt: 35ms (28.5pps)
 TimeCor=-13.0s, PPS(min,max,med): 28,29,28
 Timeint/DSPdiff(mn,min,mx):35,35,35/35,35,35
 Prof: 632 to 28789, NumProf(r/t): 11357/28157
 ProcTime/Recs: 19:38:50-19:45:29/16800-28156
 ADacqtime: 32ms; DRate: 45.9KB/s; Flags: 0, 0, 0
 Pulse: 275ns, IFfilt: 5.0MHz; ppPol: HH
 TxPol: H, PRF: 20 20 20 10 kHz, NoiseFlg:1234
 Range: Delay 75m, Spacing 30m, Gates 100
 Ave. Pulses: 520, Rng/Prof Aspect@90m/s: 9.5

	Min	Max	Mean	Std	Varc%
hhN(dB)	-65.83	-63.88	-64.97	-76.74	6.6
vvN(dB)	-66.04	-64.40	-65.28	-78.30	5.0
hhL(dB)	-12.34	0.25	-6.03	-8.03	63.1
vhL(dB)	0.78	6.00	5.99	-10.17	2.4
ppN(m/s)	-15.79	15.80	-0.43	7.88	
ppT(m/s)	-0.07	0.03	-0.02	0.01	
vh/hh(dB)	NaN	-30.62	-35.62	-37.27	68.3
hnjmp(dB)			-0.16		
vnjmp(dB)			-0.16		