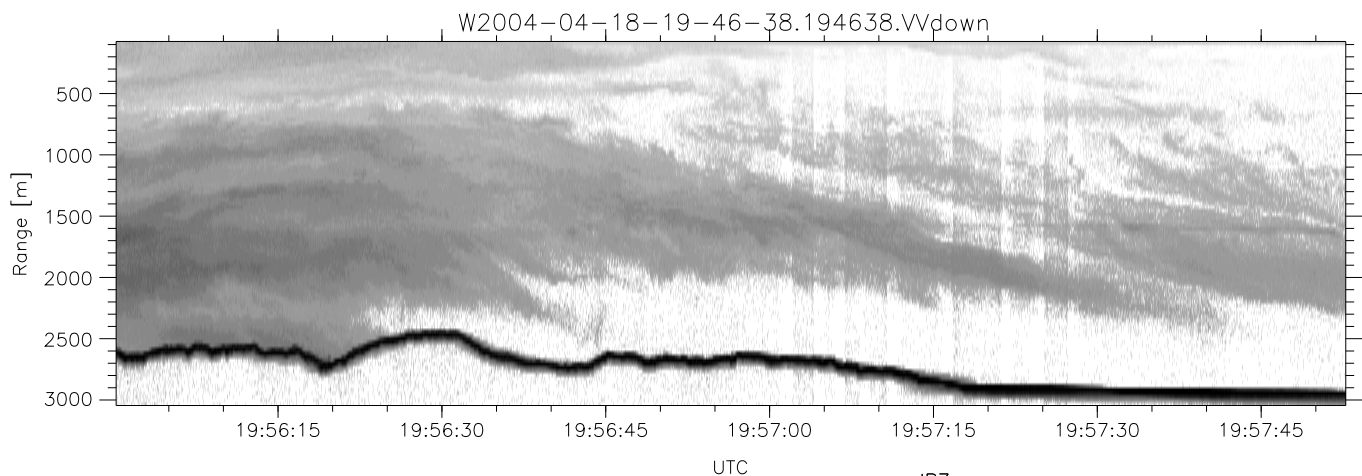
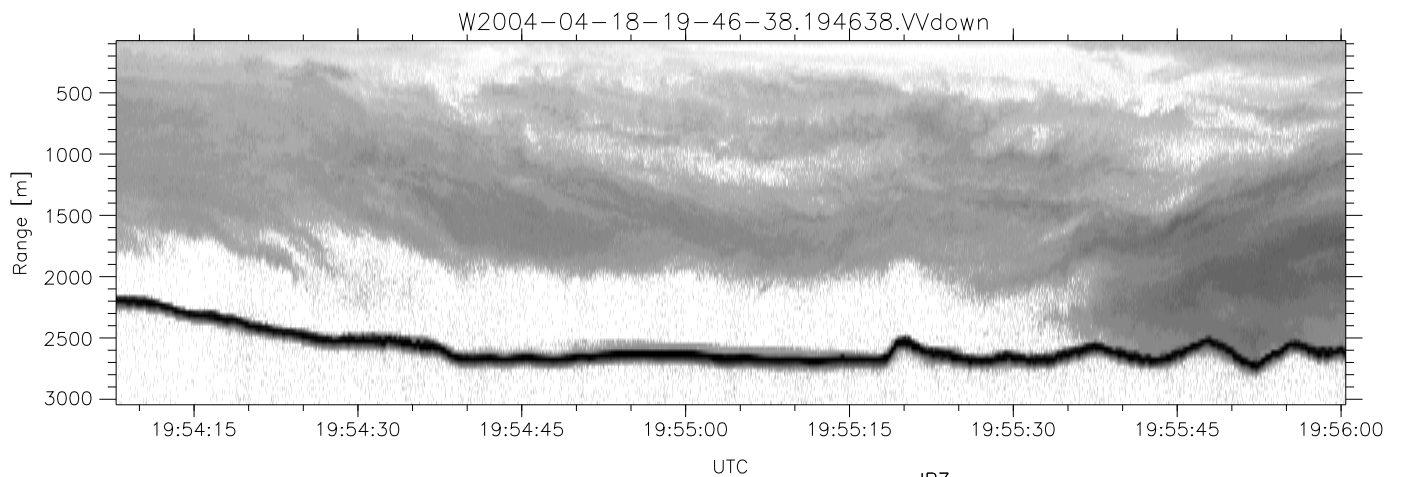
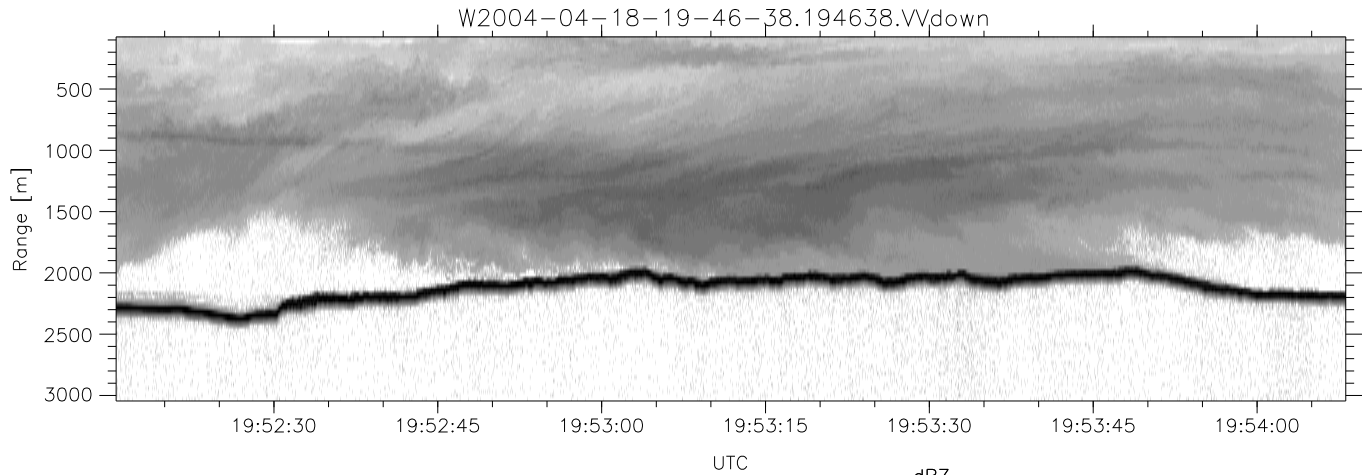


CIFEX 2004 Data (cal/250ns+2.5/100ns-3.5/500ns: 53.0,50.0)

W2004-04-18-19-46-38 - PPMAG4, IRIG:1/0/2
 UTC: 19:46:38.65 to 22:40:44.81, Dur: 10446s ???
 TimeLngth: 10447.02s, TimeInt: 27ms (35.9pps)
 TimeCor=-13.0s, PPS(min,max,med): 35,36,36
 Timeint/DSPdiff(mn,min,mx):27,27,27/27,27,27
 Prof: 630 to 375278, NumProf(r/t): 35142/374648
 ProcTime/Recs: 19:46:38-20:02:58/0-35141
 ADacqtime: 25ms; DRate: 200.8KB/s; Flags: 1, 0, 0
 Pulse: 275ns, IFfilt: 5.0MHz; ppPol: HH HV VV
 TxPol: HHVV, PRF: 20 10 20 10 kHz, Noiseflg:4,2
 Range: Delay 75m, Spacing 30m, Gates 100
 Ave. Pulses: 84, Rng/Prof Aspect@90m/s: 12.0

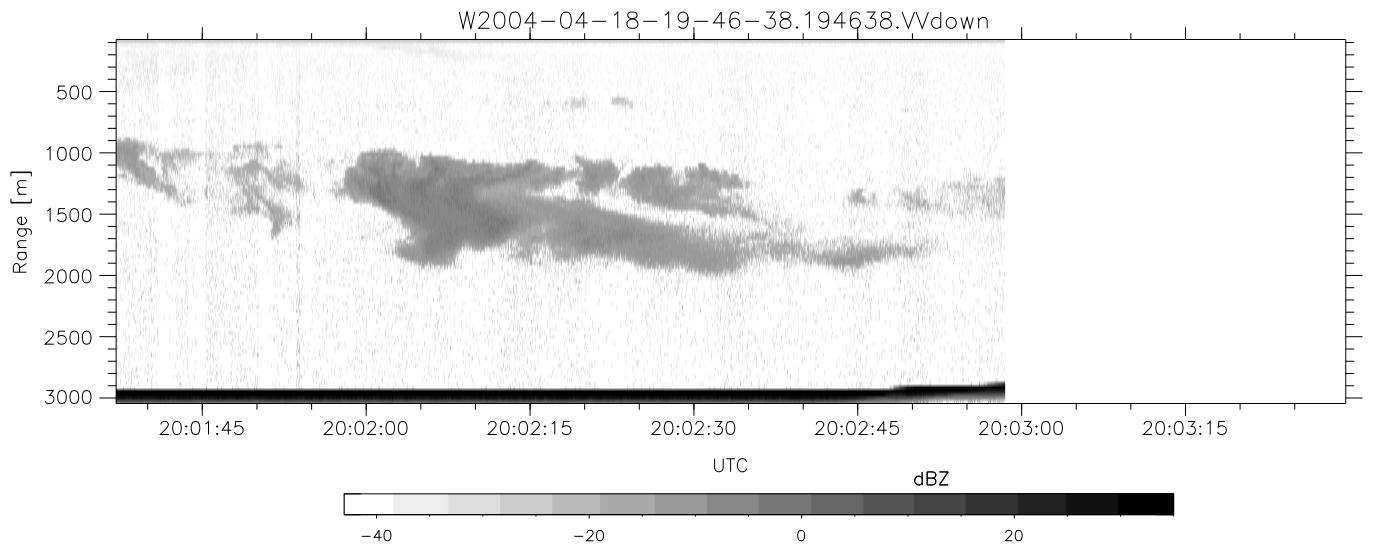
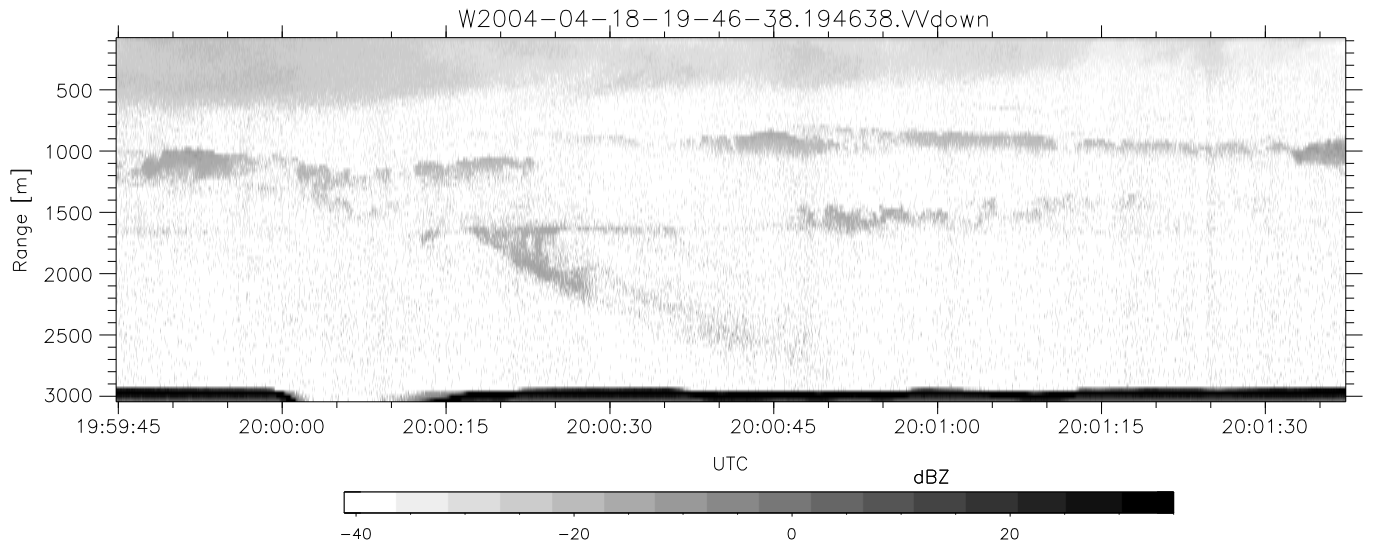
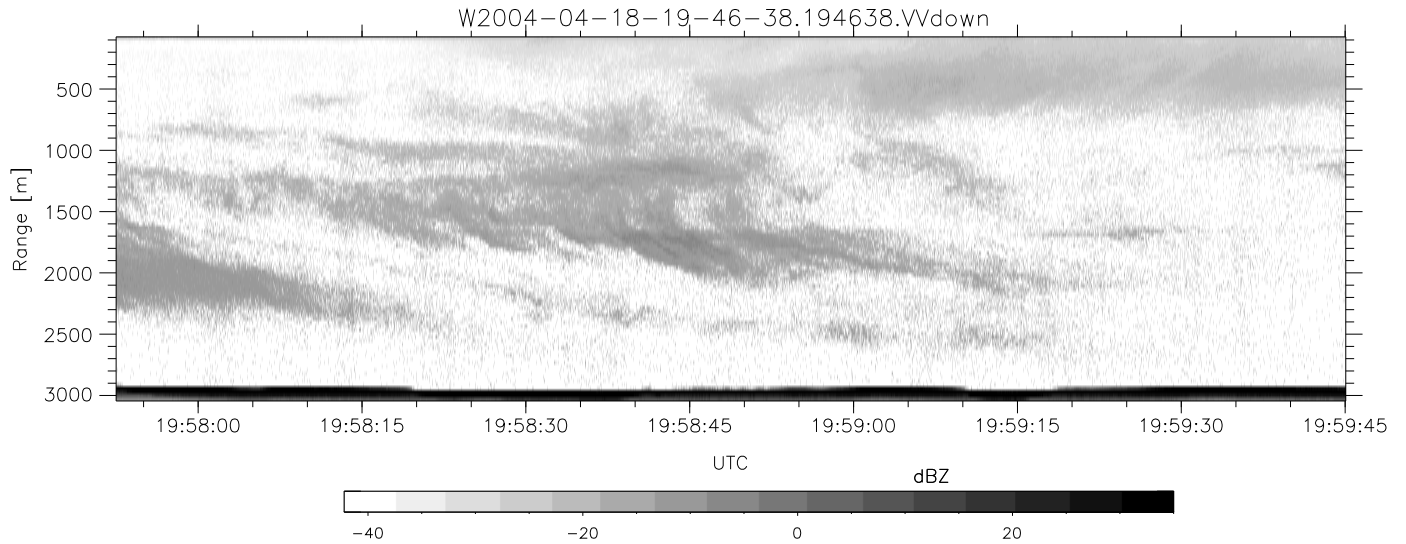
	Min	Max	Mean	Std	Varc%
hhN (dB)	-67.49	-63.95	-65.42	-75.44	9.9
vvN (dB)	-67.35	-63.54	-65.40	-75.17	10.5
hhL (dB)	-8.30	3.43	0.27	-2.93	47.9
vvL (dB)	-2.67	6.00	5.31	0.42	32.4
ppN (m/s)	-13.05	12.76	-0.07	4.17	
ppT (m/s)	-103.0	100.82	-0.52	32.98	
hh/vv (dB)	NaN	65.42	5.88	42.56	4660
vh/hh (dB)	NaN	-27.24	-33.55	-35.26	67.6
hv/vv (dB)	NaN	-33.75	-50.57	-43.34	528.
hnjmp (dB)			-0.16		
vnjmp (dB)			-0.16		



CIFEX 2004 Data (cal/250ns+2.5/100ns-3.5/500ns: 53.0,50.0)

W2004-04-18-19-46-38 - PPMAG4, IRIG:1/0/2
 UTC: 19:46:38.65 to 22:40:44.81, Dur: 10446s ???
 TimeLngth: 10447.02s, TimeInt: 27ms (35.9pps)
 TimeCor=-13.0s, PPS(min,max,med): 35,36,36
 Timeint/DSPdiff(mn,min,mx):27,27,27/27,27,27
 Prof: 630 to 375278, NumProf(r/t): 35142/374648
 ProcTime/Recs: 19:46:38-20:02:58/0-35141
 ADacqtime: 25ms; DRate: 200.8KB/s; Flags: 1, 0, 0
 Pulse: 275ns, IFfilt: 5.0MHz; ppPol: HH HV VV
 TxPol: HHVV, PRF: 20 10 20 10 kHz, Noiseflg:4,2
 Range: Delay 75m, Spacing 30m, Gates 100
 Ave. Pulses: 84, Rng/Prof Aspect@90m/s: 12.0

	Min	Max	Mean	Std	Varc%
hhN (dB)	-67.49	-63.95	-65.42	-75.44	9.9
vvN (dB)	-67.35	-63.54	-65.40	-75.17	10.5
hhL (dB)	-8.30	3.43	0.27	-2.93	47.9
vvL (dB)	-2.67	6.00	5.31	0.42	32.4
ppN (m/s)	-13.05	12.76	-0.07	4.17	
ppT (m/s)	-103.0	100.82	-0.52	32.98	
hh/vv (dB)	NaN	65.42	5.88	42.56	4660
vh/hh (dB)	NaN	-27.24	-33.55	-35.26	67.6
hv/vv (dB)	NaN	-33.75	-50.57	-43.34	528.
hn_jmp (dB)			-0.16		
vn_jmp (dB)			-0.16		



CIFEX 2004 Data (cal/250ns+2.5/100ns-3.5/500ns: 53.0,50.0)

W2004-04-18-19-46-38 - PPMAG4, IRIG:1/0/2
 UTC: 19:46:38.65 to 22:40:44.81, Dur: 10446s ???
 TimeLngth: 10447.02s, TimeInt: 27ms (35.9pps)
 TimeCor=-13.0s, PPS(min,max,med): 35,36,36
 Timeint/DSPdiff(mn,min,mx):27,27,27/27,27,27
 Prof: 630 to 375278, NumProf(r/t): 35142/374648
 ProcTime/Recs: 19:46:38-20:02:58/0-35141
 ADacqtime: 25ms; DRate: 200.8KB/s; Flags: 1, 0, 0
 Pulse: 275ns, IFilt: 5.0MHz; ppPol: HH HV VV
 TxPol: HHVV, PRF: 20 10 20 10 kHz, NoiseFlg:4,2
 Range: Delay 75m, Spacing 30m, Gates 100
 Ave. Pulses: 84, Rng/Prof Aspect@90m/s: 12.0

	Min	Max	Mean	Std	Varc%
hhN (dB)	-67.49	-63.95	-65.42	-75.44	9.9
vvN (dB)	-67.35	-63.54	-65.40	-75.17	10.5
hhL (dB)	-8.30	3.43	0.27	-2.93	47.9
vvL (dB)	-2.67	6.00	5.31	0.42	32.4
ppN (m/s)	-13.05	12.76	-0.07	4.17	
ppT (m/s)	-103.0	100.82	-0.52	32.98	
hh/vv (dB)	NaN	65.42	5.88	42.56	4660
vh/hh (dB)	NaN	-27.24	-33.55	-35.26	67.6
hv/vv (dB)	NaN	-33.75	-50.57	-43.34	528.
hnjmp (dB)			-0.16		
vnjmp (dB)			-0.16		