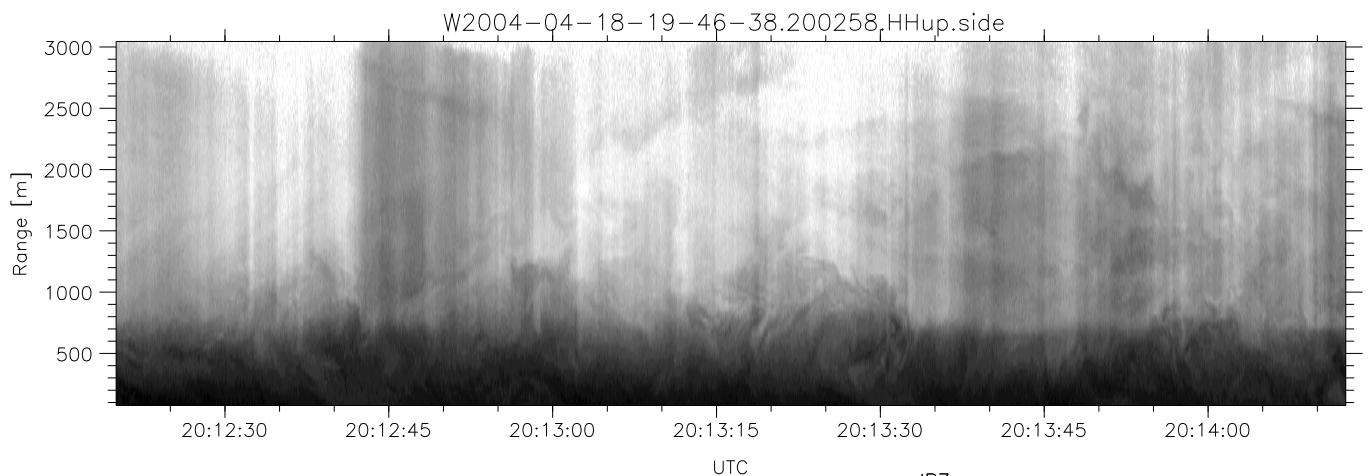
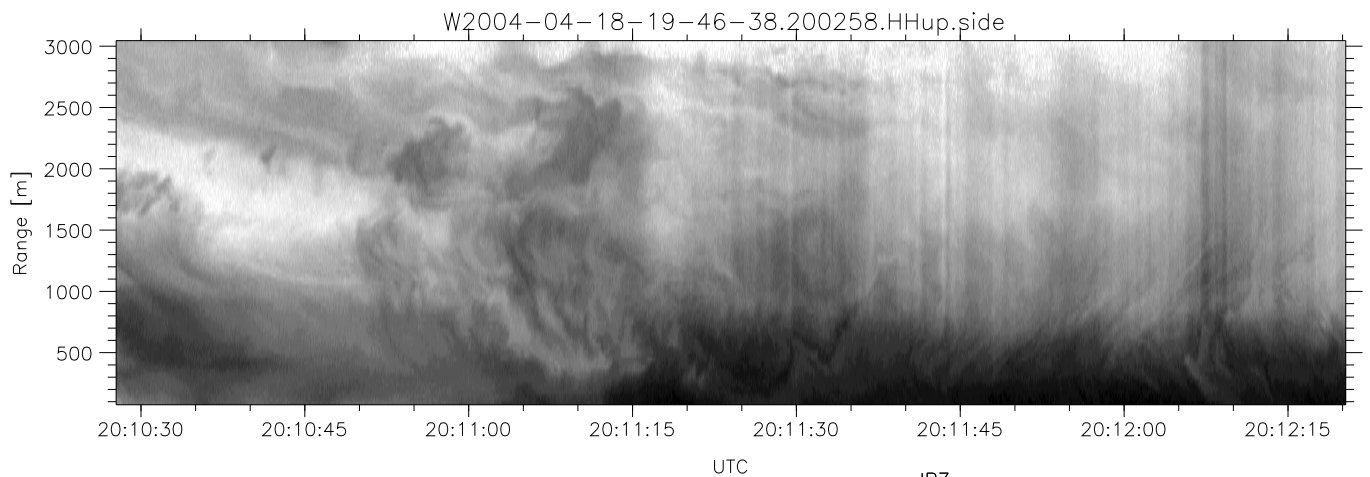
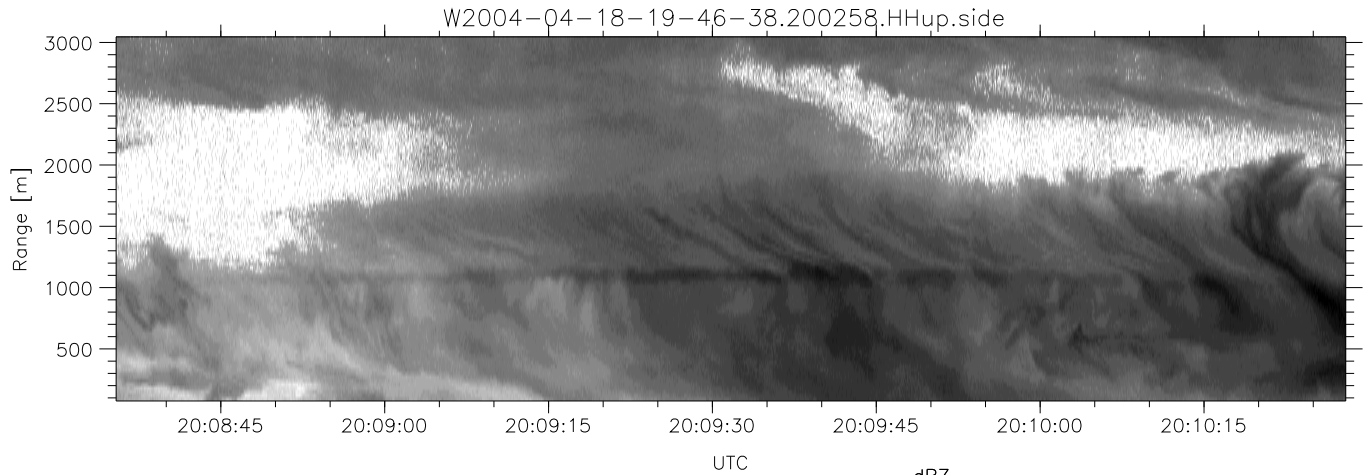


CIFEX 2004 Data (cal/250ns+2.5/100ns-3.5/500ns: 53.0,50.0)

W2004-04-18-19-46-38 - PPMAG4, IRIG:1/0/2
 UTC: 19:46:38.65 to 22:40:44.81, Dur: 10446s
 TimeLngth: 10446.66s, TimeInt: 27ms (35.9pps)
 TimeCor=-13.0s, PPS(min,max,med): 35,36,36
 Timeint/DSPdiff(mn,min,mx):27,27,40/27,27,40
 Prof: 630 to 375278, NumProf(r/t): 35142/374648
 ProcTime/Recs: 20:02:58-20:19:18/35142-70283
 ADacqtime: 25ms; DRate: 200.8KB/s; Flags: 1, 0, 0
 Pulse: 275ns, IFilt: 5.0MHz; ppPol: HH HV VV
 TxPol: HHVV, PRF: 20 10 20 10 kHz, Noiseflg:4,2
 Range: Delay 75m, Spacing 30m, Gates 100
 Ave. Pulses: 84, Rng/Prof Aspect@90m/s: 12.0

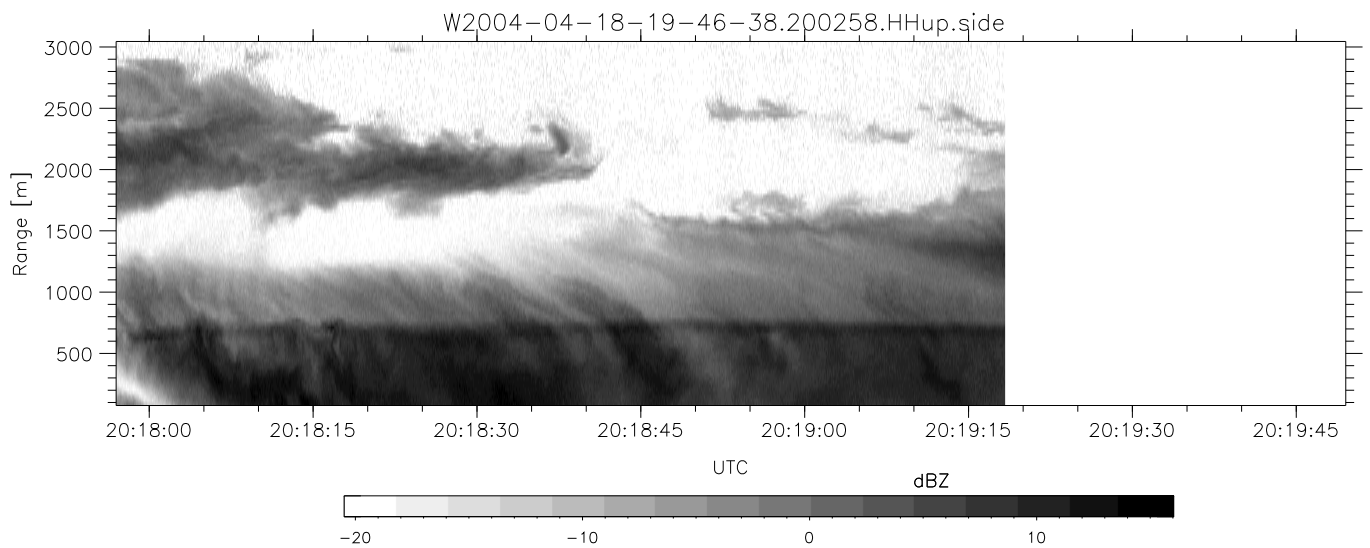
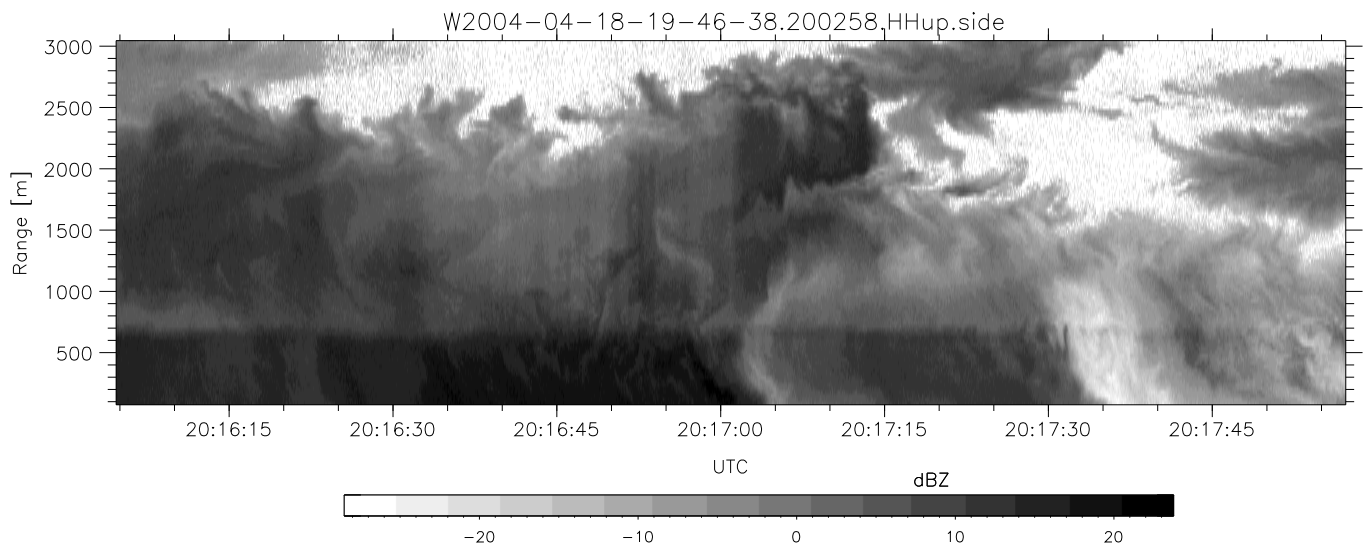
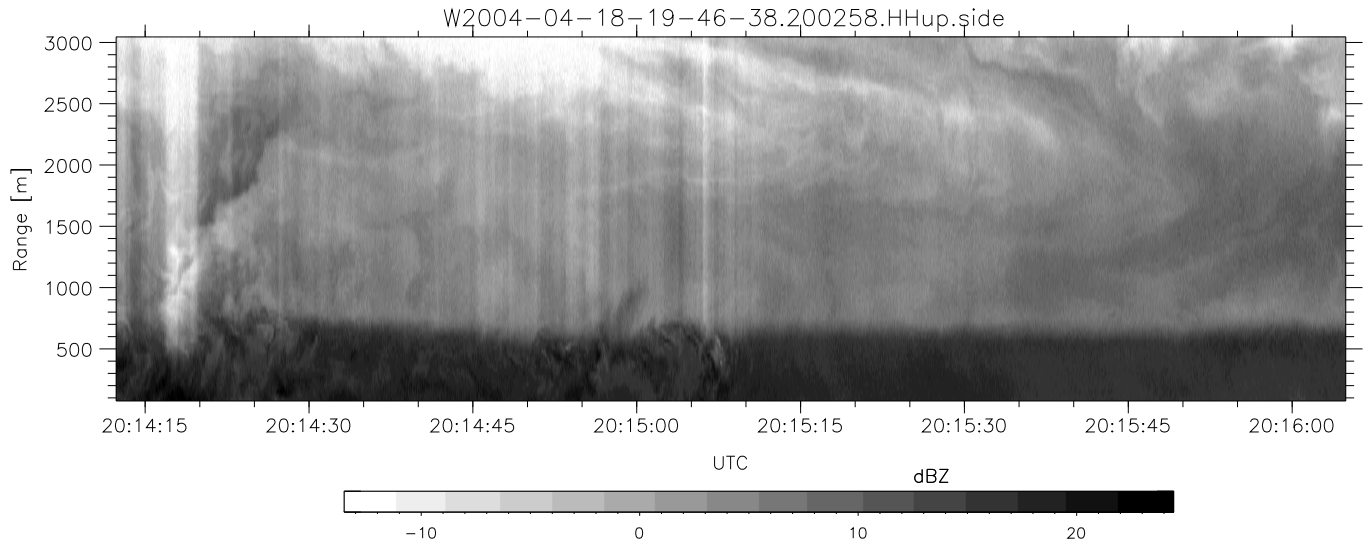
	Min	Max	Mean	Std	Varc%
hhN(dB)	-67.34	-63.61	-65.44	-75.44	10.0
vvN(dB)	-67.47	-63.74	-65.57	-75.55	10.0
hhL(dB)	-22.65	2.33	-4.11	-4.78	85.9
vvL(dB)	-15.75	6.00	4.99	0.70	37.3
ppN(m/s)	-12.64	12.65	0.01	4.17	
ppT(m/s)	-99.83	99.90	0.09	32.94	
hh/vv(dB)	NaN	77.99	15.81	51.17	3435
vh/hh(dB)	NaN	9.11	-22.21	-11.56	1161
hv/vv(dB)	NaN	-25.57	-49.14	-43.68	351.
hnjmp(dB)			-0.17		
vnjmp(dB)			-0.16		



CIFEX 2004 Data (cal/250ns+2.5/100ns-3.5/500ns: 53.0,50.0)

W2004-04-18-19-46-38 - PPMAG4, IRIG:1/0/2
 UTC: 19:46:38.65 to 22:40:44.81, Dur: 10446s
 TimeLngth: 10446.66s, TimeInt: 27ms (35.9pps)
 TimeCor=-13.0s, PPS(min,max,med): 35,36,36
 Timeint/DSPdiff(mn,min,mx):27,27,40/27,27,40
 Prof: 630 to 375278, NumProf(r/t): 35142/374648
 ProcTime/Recs: 20:02:58-20:19:18/35142-70283
 ADacqtime: 25ms; DRate: 200.8KB/s; Flags: 1, 0, 0
 Pulse: 275ns, IFfilt: 5.0MHz; ppPol: HH HV VV
 TxPol: HHVV, PRF: 20 10 20 10 kHz, Noiseflg:4,2
 Range: Delay 75m, Spacing 30m, Gates 100
 Ave. Pulses: 84, Rng/Prof Aspect@90m/s: 12.0

	Min	Max	Mean	Std	Varc%
hhN(dB)	-67.34	-63.61	-65.44	-75.44	10.0
vvN(dB)	-67.47	-63.74	-65.57	-75.55	10.0
hhL(dB)	-22.65	2.33	-4.11	-4.78	85.9
vvL(dB)	-15.75	6.00	4.99	0.70	37.3
ppN(m/s)	-12.64	12.65	0.01	4.17	
ppT(m/s)	-99.83	99.90	0.09	32.94	
hh/vv(dB)	NaN	77.99	15.81	51.17	3435
vh/hh(dB)	NaN	9.11	-22.21	-11.56	1161
hv/vv(dB)	NaN	-25.57	-49.14	-43.68	351.
hn_jmp(dB)			-0.17		
vn_jmp(dB)			-0.16		



CIFEX 2004 Data (cal/250ns+2.5/100ns-3.5/500ns: 53.0,50.0)

W2004-04-18-19-46-38 - PPMAG4, IRIG:1/0/2
 UTC: 19:46:38.65 to 22:40:44.81, Dur: 10446s
 TimeLngth: 10446.66s, TimeInt: 27ms (35.9pps)
 TimeCor=-13.0s, PPS(min,max,med): 35,36,36
 Timeint/DSPdiff(mn,min,mx):27,27,40/27,27,40
 Prof: 630 to 375278, NumProf(r/t): 35142/374648
 ProcTime/Recs: 20:02:58-20:19:18/35142-70283
 ADacqtime: 25ms; DRate: 200.8KB/s; Flags: 1, 0, 0
 Pulse: 275ns, IFfilt: 5.0MHz; ppPol: HH HV VV
 TxPol: HHVV, PRF: 20 10 20 10 kHz, Noiseflg:4,2
 Range: Delay 75m, Spacing 30m, Gates 100
 Ave. Pulses: 84, Rng/Prof Aspect@90m/s: 12.0

	Min	Max	Mean	Std	Varc%
hhN (dB)	-67.34	-63.61	-65.44	-75.44	10.0
vvN (dB)	-67.47	-63.74	-65.57	-75.55	10.0
hhL (dB)	-22.65	2.33	-4.11	-4.78	85.9
vvL (dB)	-15.75	6.00	4.99	0.70	37.3
ppN (m/s)	-12.64	12.65	0.01	4.17	
ppT (m/s)	-99.83	99.90	0.09	32.94	
hh/vv (dB)	NaN	77.99	15.81	51.17	3435
vh/hh (dB)	NaN	9.11	-22.21	-11.56	1161
hv/vv (dB)	NaN	-25.57	-49.14	-43.68	351.
hnjmp (dB)			-0.17		
vnjmp (dB)			-0.16		