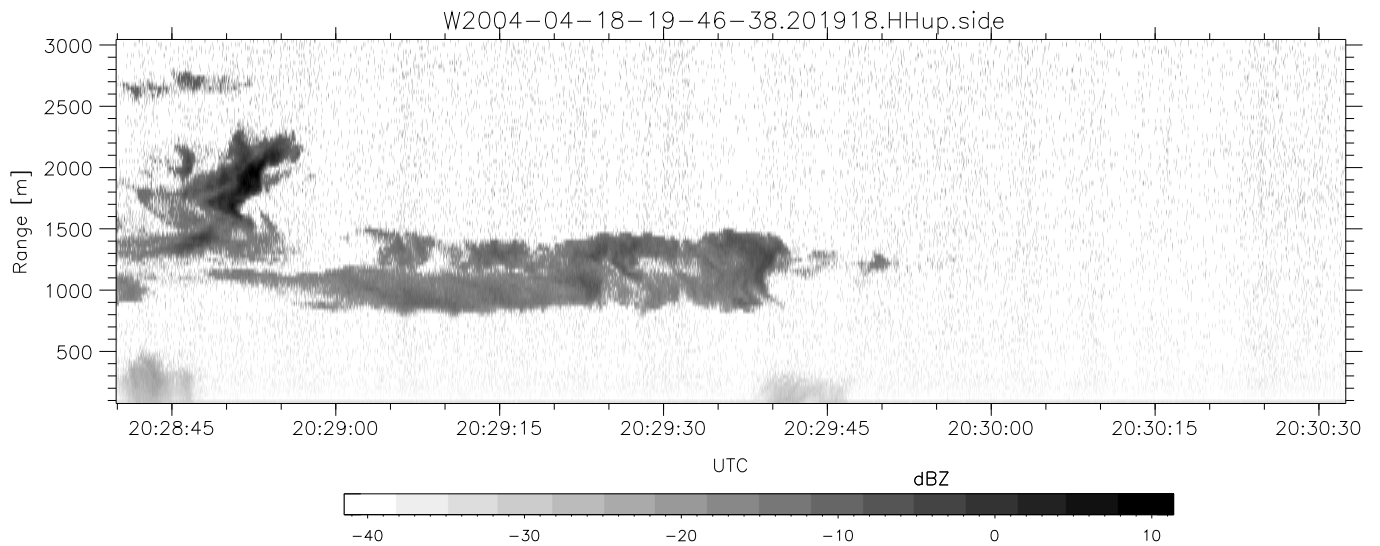
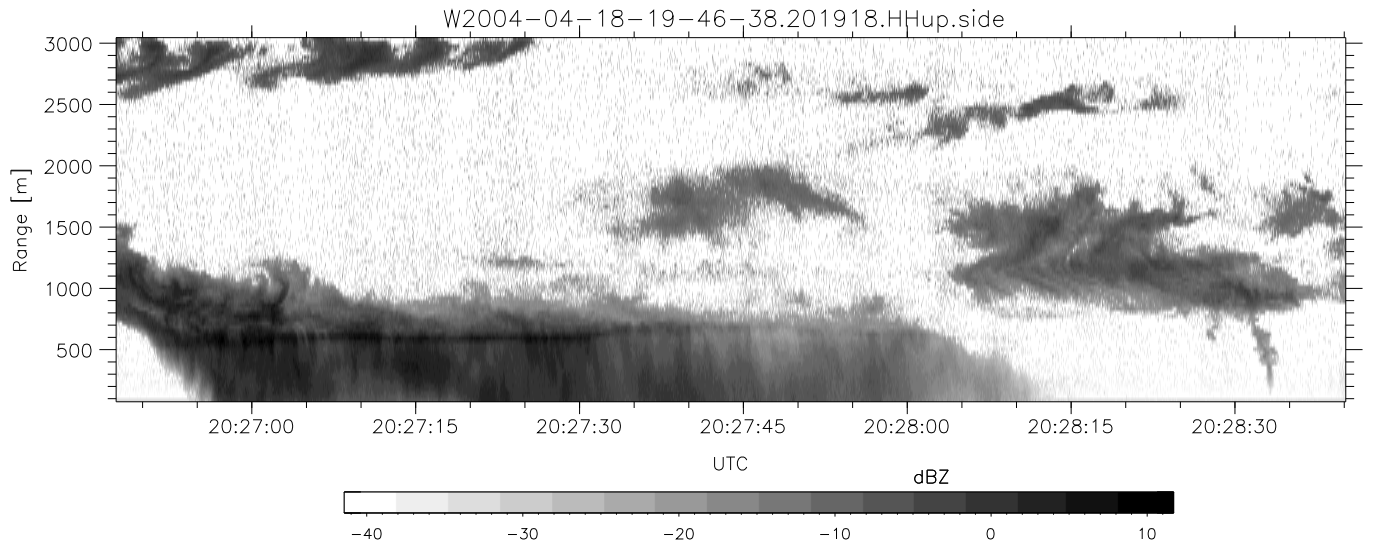
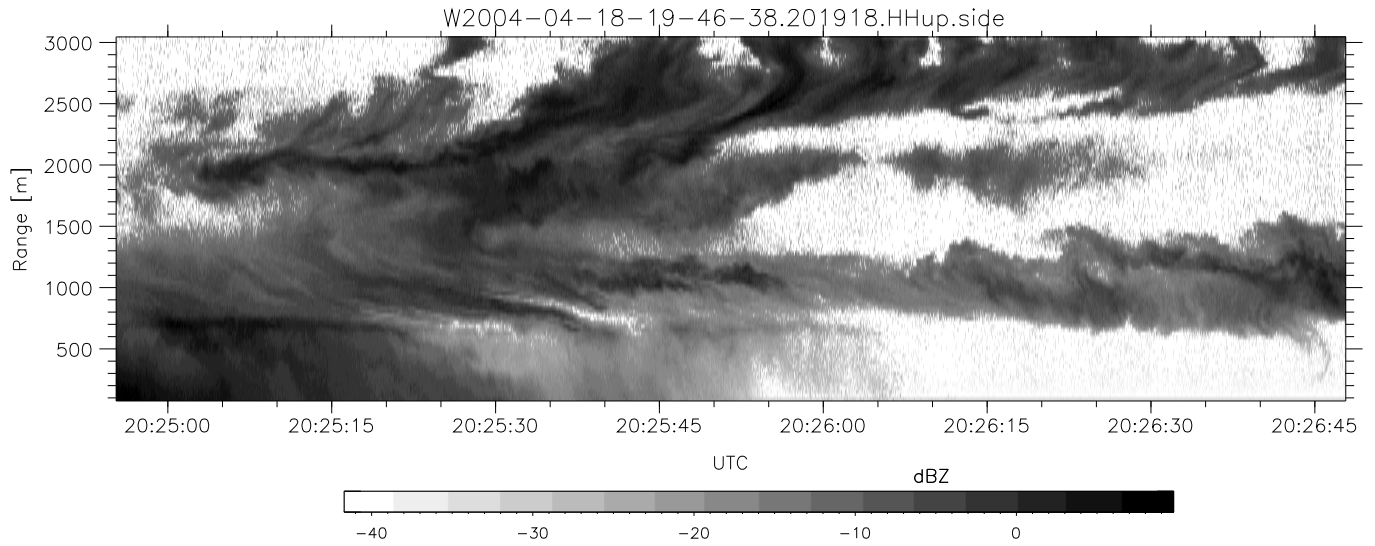


CIFEX 2004 Data (cal/250ns+2.5/100ns-3.5/500ns: 53.0,50.0)

W2004-04-18-19-46-38 - PPMAG4, IRIG:1/0/2
 UTC: 19:46:38.65 to 22:40:44.81, Dur: 10446s ???
 TimeLngth: 10447.02s, TimeInt: 27ms (35.9pps)
 TimeCor=-13.0s, PPS(min,max,med): 35,36,36
 Timeint/DSPdiff(mn,min,mx):27,27,27/27,27,27
 Prof: 630 to 375278, NumProf(r/t): 35142/374648
 ProcTime/Recs: 20:19:18-20:35:38/70284-105425
 ADacqtime: 25ms; DRate: 200.8KB/s; Flags: 1, 0, 0
 Pulse: 275ns, IFilt: 5.0MHz; ppPol: HH HV VV
 TxPol: HHVV, PRF: 20 10 20 10 kHz, NoiseFlg:4,4
 Range: Delay 75m, Spacing 30m, Gates 100
 Ave. Pulses: 84, Rng/Prof Aspect@90m/s: 12.0

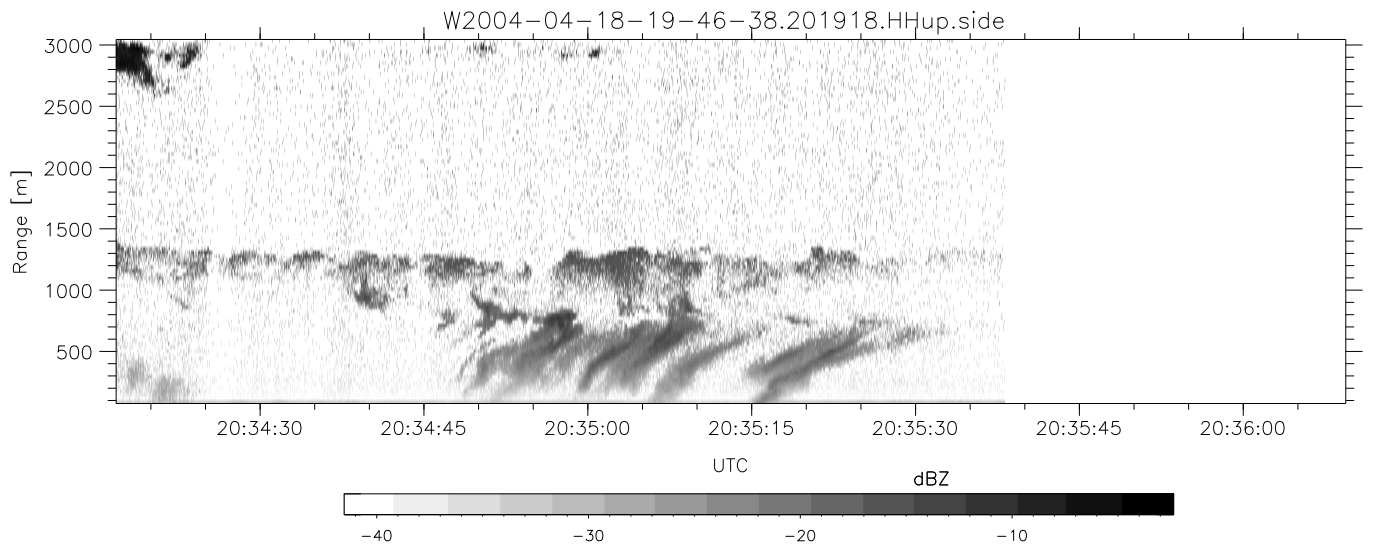
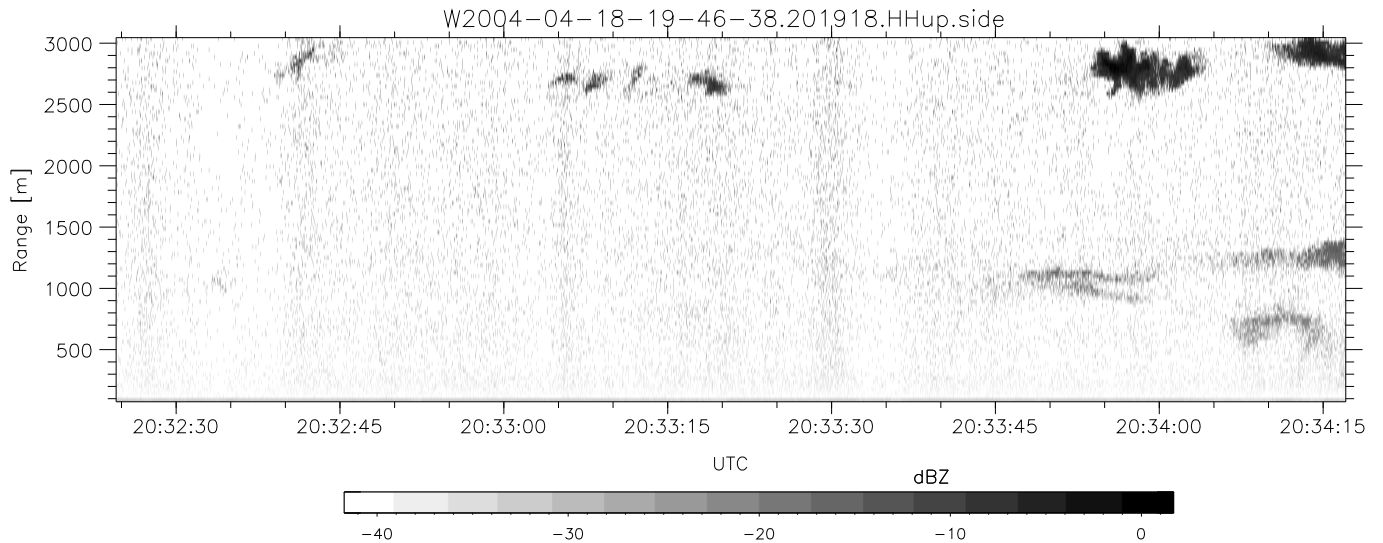
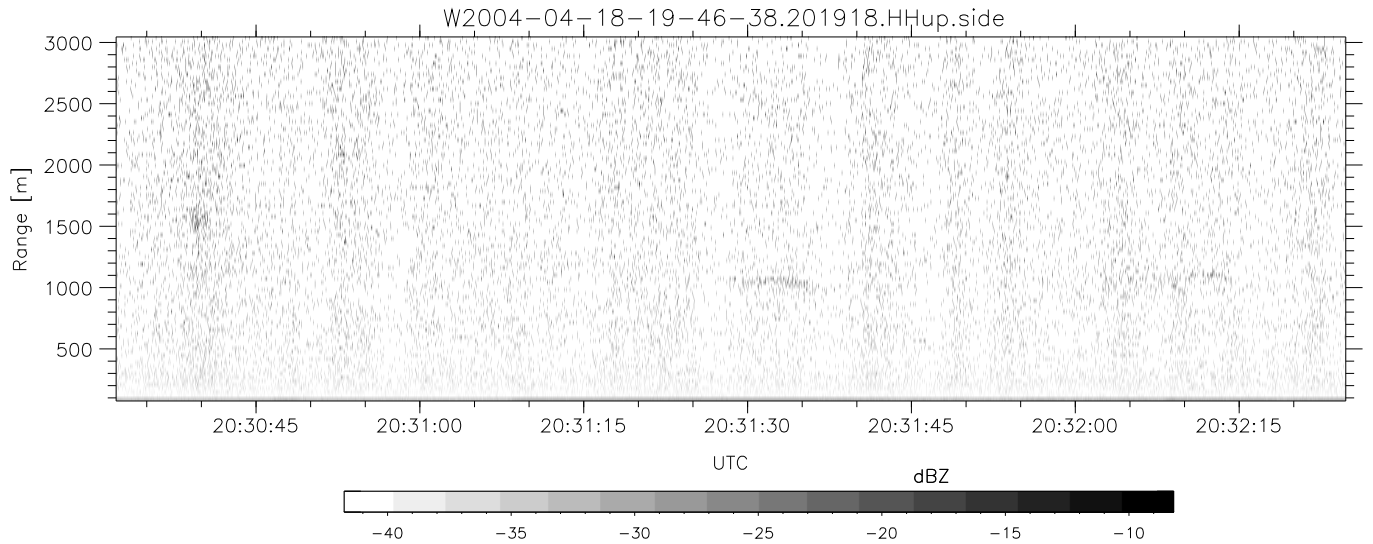
	Min	Max	Mean	Std	Varc%
hhN (dB)	-67.61	-63.96	-65.70	-75.53	10.4
vvN (dB)	-67.63	-64.05	-65.79	-75.70	10.2
hhL (dB)	-14.14	-4.07	-8.60	-12.87	37.4
vvL (dB)	1.34	6.00	5.47	-4.84	9.3
ppN (m/s)	-12.38	12.52	0.00	4.16	
ppT (m/s)	-97.79	98.90	0.03	32.87	
hh/vv (dB)	NaN	73.44	22.01	46.35	2716
vh/hh (dB)	NaN	-0.39	-22.36	-14.80	569.
hv/vv (dB)	NaN	-30.32	-47.51	-43.09	277.
hnjmp (dB)			-0.17		
vnjmp (dB)			-0.17		



CIFEX 2004 Data (cal/250ns+2.5/100ns-3.5/500ns: 53.0,50.0)

W2004-04-18-19-46-38 - PPMAG4, IRIG:1/0/2
 UTC: 19:46:38.65 to 22:40:44.81, Dur: 10446s ???
 TimeLngth: 10447.02s, TimeInt: 27ms (35.9pps)
 TimeCor=-13.0s, PPS(min,max,med): 35,36,36
 Timeint/DSPdiff(mn,min,mx):27,27,27/27,27,27
 Prof: 630 to 375278, NumProf(r/t): 35142/374648
 ProcTime/Recs: 20:19:18-20:35:38/70284-105425
 ADacqtime: 25ms; DRate: 200.8KB/s; Flags: 1, 0, 0
 Pulse: 275ns, IFfilt: 5.0MHz; ppPol: HH HV VV
 TxPol: HHVV, PRF: 20 10 20 10 kHz, Noiseflg:4,4
 Range: Delay 75m, Spacing 30m, Gates 100
 Ave. Pulses: 84, Rng/Prof Aspect@90m/s: 12.0

	Min	Max	Mean	Std	Varc%
hhN(dB)	-67.61	-63.96	-65.70	-75.53	10.4
vvN(dB)	-67.63	-64.05	-65.79	-75.70	10.2
hhL(dB)	-14.14	-4.07	-8.60	-12.87	37.4
vvL(dB)	1.34	6.00	5.47	-4.84	9.3
ppN(m/s)	-12.38	12.52	0.00	4.16	
ppT(m/s)	-97.79	98.90	0.03	32.87	
hh/vv(dB)	NaN	73.44	22.01	46.35	2716
vh/hh(dB)	NaN	-0.39	-22.36	-14.80	569.
hv/vv(dB)	NaN	-30.32	-47.51	-43.09	277.
hn_jmp(dB)			-0.17		
vn_jmp(dB)			-0.17		



CIFEX 2004 Data (cal/250ns+2.5/100ns-3.5/500ns: 53.0,50.0)

W2004-04-18-19-46-38 - PPMAG4, IRIG:1/0/2
 UTC: 19:46:38.65 to 22:40:44.81, Dur: 10446s ???
 TimeLngth: 10447.02s, TimeInt: 27ms (35.9pps)
 TimeCor=-13.0s, PPS(min,max,med): 35,36,36
 Timeint/DSPdiff(mn,min,mx):27,27,27/27,27,27
 Prof: 630 to 375278, NumProf(r/t): 35142/374648
 ProcTime/Recs: 20:19:18-20:35:38/70284-105425
 ADacqtime: 25ms; DRate: 200.8KB/s; Flags: 1, 0, 0
 Pulse: 275ns, IFilt: 5.0MHz; ppPol: HH HV VV
 TxPol: HHVV, PRF: 20 10 20 10 kHz, NoiseFlg:4,4
 Range: Delay 75m, Spacing 30m, Gates 100
 Ave. Pulses: 84, Rng/Prof Aspect@90m/s: 12.0

	Min	Max	Mean	Std	Varc%
hhN (dB)	-67.61	-63.96	-65.70	-75.53	10.4
vvN (dB)	-67.63	-64.05	-65.79	-75.70	10.2
hhL (dB)	-14.14	-4.07	-8.60	-12.87	37.4
vvL (dB)	1.34	6.00	5.47	-4.84	9.3
ppN (m/s)	-12.38	12.52	0.00	4.16	
ppT (m/s)	-97.79	98.90	0.03	32.87	
hh/vv (dB)	NaN	73.44	22.01	46.35	2716
vh/hh (dB)	NaN	-0.39	-22.36	-14.80	569.
hv/vv (dB)	NaN	-30.32	-47.51	-43.09	277.
hnjmp (dB)			-0.17		
vnjmp (dB)			-0.17		