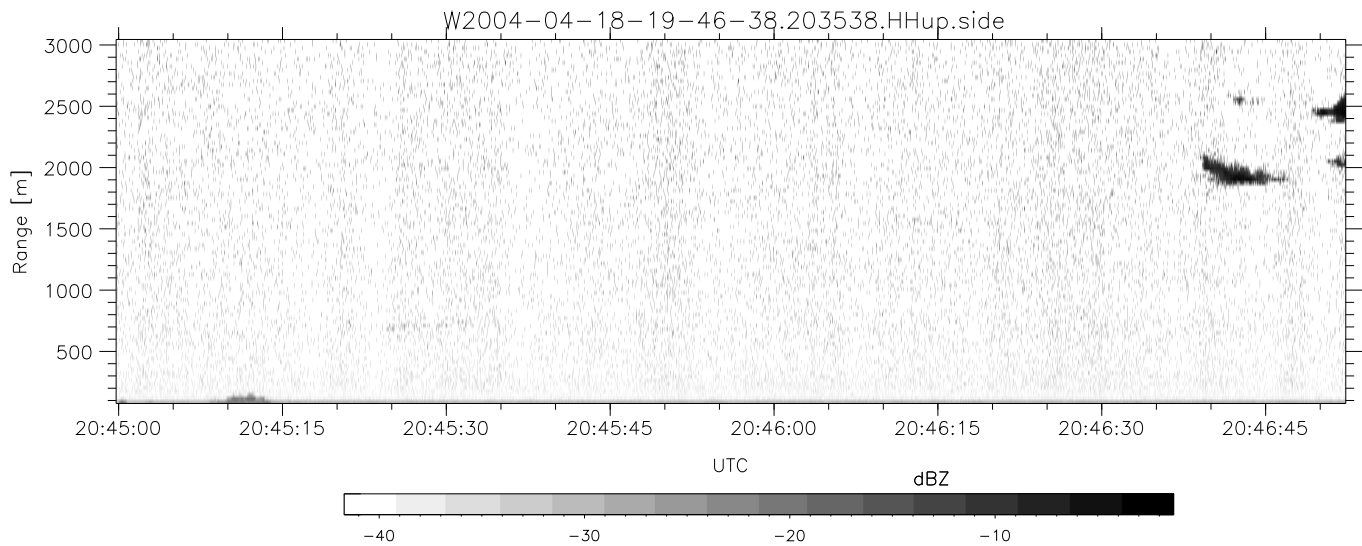
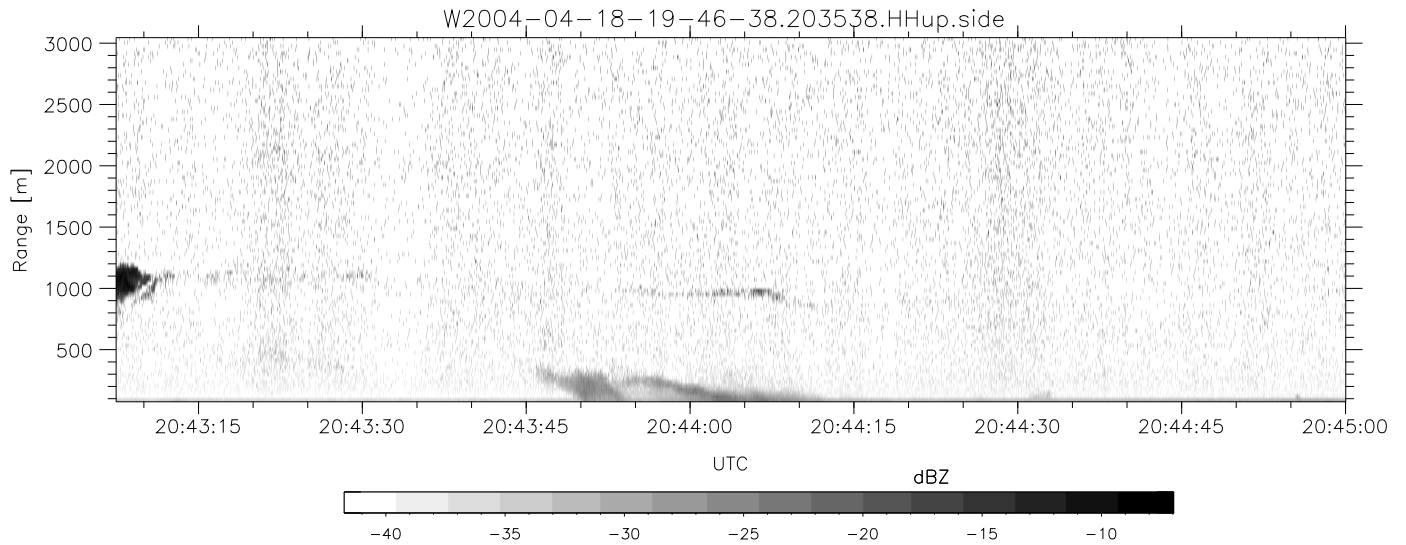
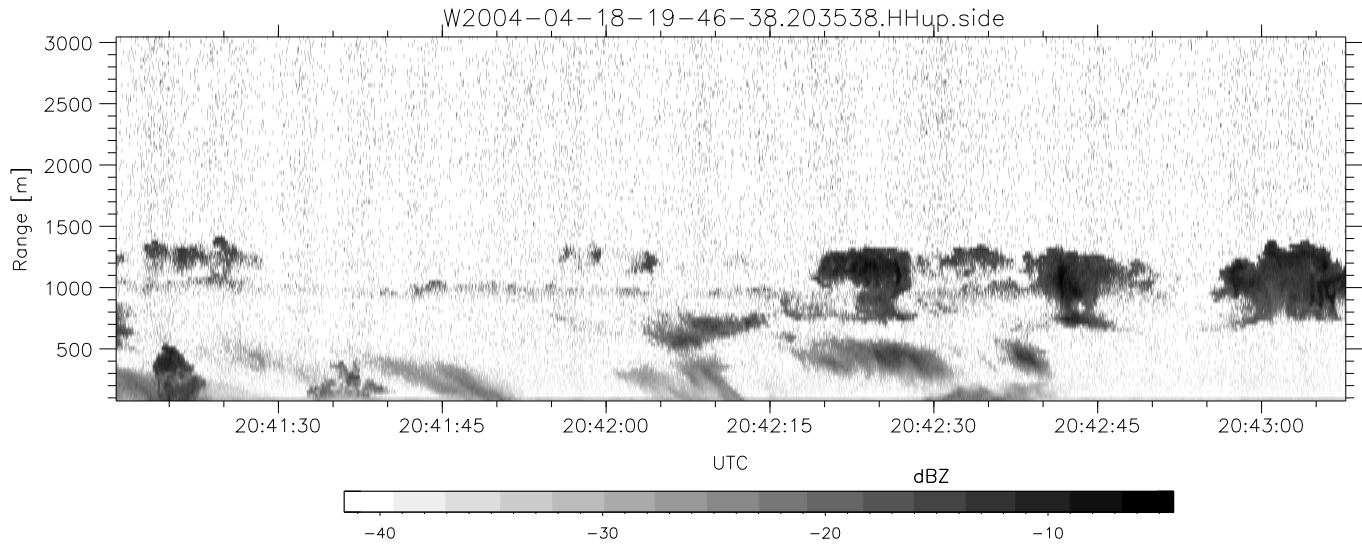


CIFEX 2004 Data (cal/250ns+2.5/100ns-3.5/500ns: 53.0,50.0)

W2004-04-18-19-46-38 - PPMAG4, IRIG:1/0/2  
 UTC: 19:46:38.65 to 22:40:44.81, Dur: 10446s ???  
 TimeLngth: 10447.02s, TimeInt: 27ms (35.9pps)  
 TimeCor=-13.0s, PPS(min,max,med): 35,36,36  
 Timeint/DSPdiff(mn,min,mx):27,27,41/27,27,41  
 Prof: 630 to 375278, NumProf(r/t): 35142/374648  
 ProcTime/Recs: 20:35:38-20:51:58/105426-140567  
 ADacqtime: 25ms; DRate: 200.8KB/s; Flags: 1, 0, 0  
 Pulse: 275ns, IFfilt: 5.0MHz; ppPol: HH HV VV  
 TxPol: HHVV, PRF: 20 10 20 10 kHz, Noiseflg:4,2  
 Range: Delay 75m, Spacing 30m, Gates 100  
 Ave. Pulses: 84, Rng/Prof Aspect@90m/s: 12.0

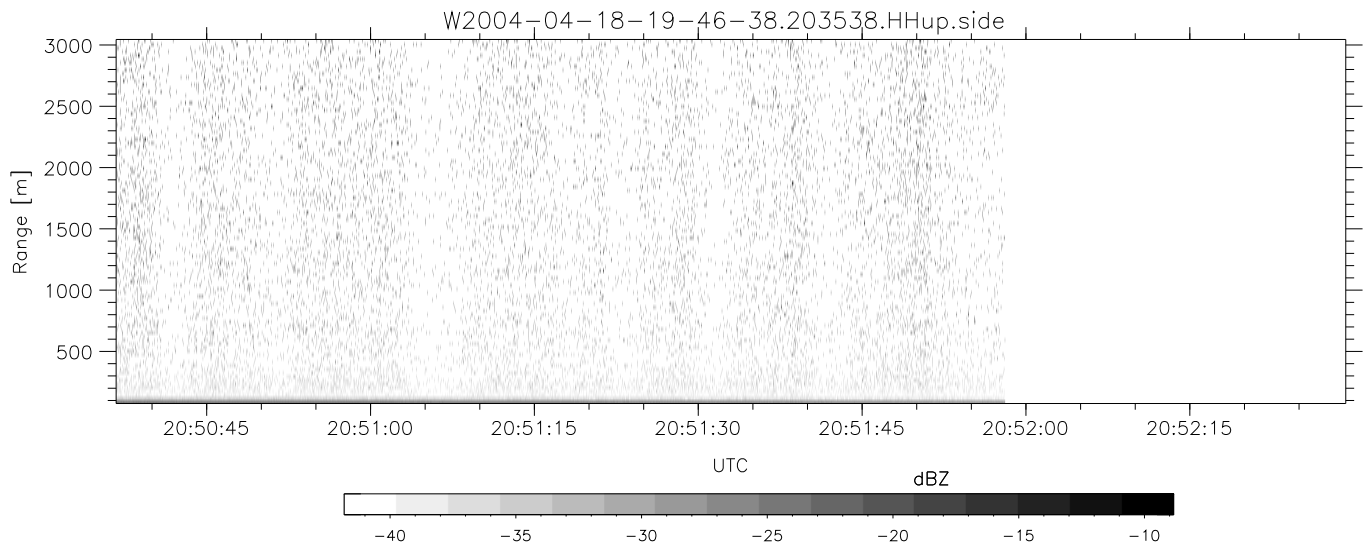
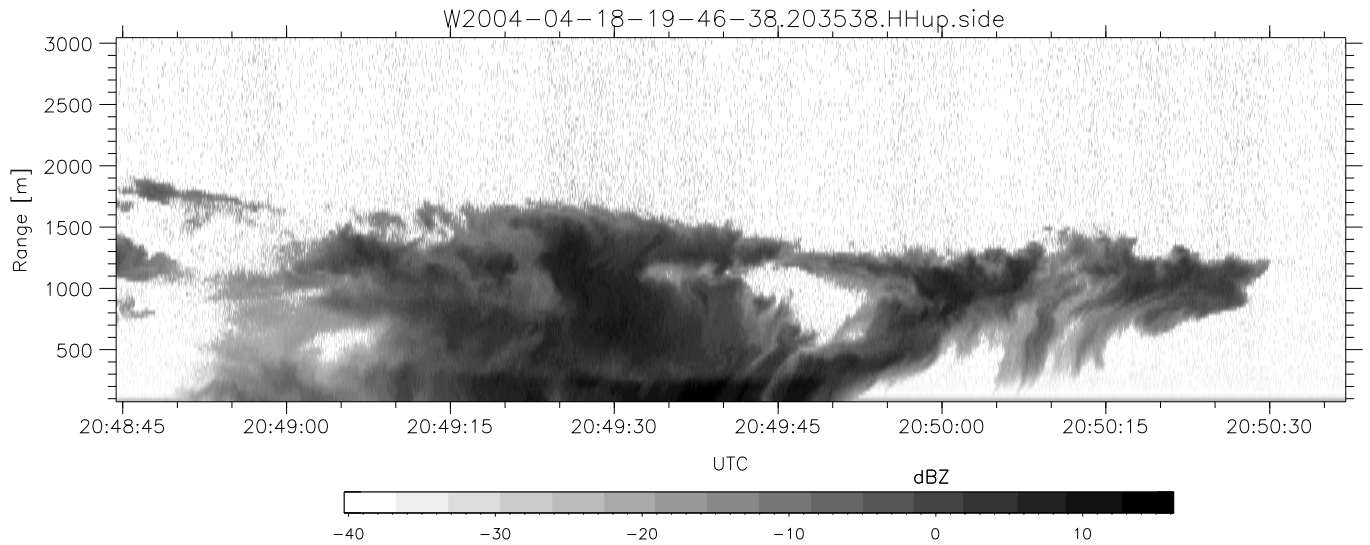
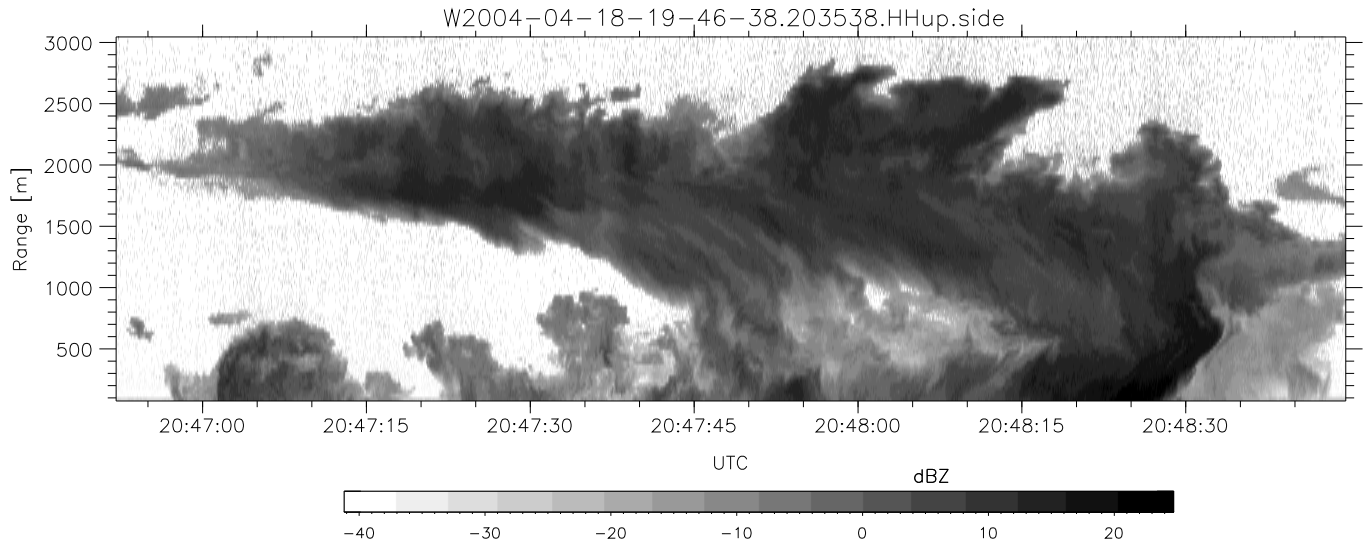
	Min	Max	Mean	Std	Varc%
hhN(dB)	-67.85	-64.16	-65.91	-75.90	10.0
vvN(dB)	-68.02	-64.32	-65.96	-75.91	10.1
hhL(dB)	-16.78	1.79	-4.23	-4.15	102.
vvL(dB)	1.10	6.00	5.22	-2.52	16.8
ppN(m/s)	-12.46	12.58	-0.02	4.16	
ppT(m/s)	-98.45	99.42	-0.14	32.87	
hh/vv(dB)	NaN	Inf	Inf	-NaN	-NaN
vh/hh(dB)	NaN	-0.36	-26.70	-16.77	984.
hv/vv(dB)	NaN	-31.50	-49.49	-44.10	345.
hnjmp(dB)			-0.17		
vnjmp(dB)			-0.18		



CIFEX 2004 Data (cal/250ns+2.5/100ns-3.5/500ns: 53.0,50.0)

W2004-04-18-19-46-38 - PPMAG4, IRIG:1/0/2  
 UTC: 19:46:38.65 to 22:40:44.81, Dur: 10446s ???  
 TimeLngth: 10447.02s, TimeInt: 27ms (35.9pps)  
 TimeCor=-13.0s, PPS(min,max,med): 35,36,36  
 Timeint/DSPdiff(mn,min,mx):27,27,41/27,27,41  
 Prof: 630 to 375278, NumProf(r/t): 35142/374648  
 ProcTime/Recs: 20:35:38-20:51:58/105426-140567  
 ADacqtime: 25ms; DRate: 200.8KB/s; Flags: 1, 0, 0  
 Pulse: 275ns, IFilt: 5.0MHz; ppPol: HH HV VV  
 TxPol: HHVV, PRF: 20 10 20 10 kHz, Noiseflg:4,2  
 Range: Delay 75m, Spacing 30m, Gates 100  
 Ave. Pulses: 84, Rng/Prof Aspect@90m/s: 12.0

	Min	Max	Mean	Std	Varc%
hhN (dB)	-67.85	-64.16	-65.91	-75.90	10.0
vvN (dB)	-68.02	-64.32	-65.96	-75.91	10.1
hhL (dB)	-16.78	1.79	-4.23	-4.15	102.
vvL (dB)	1.10	6.00	5.22	-2.52	16.8
ppN (m/s)	-12.46	12.58	-0.02	4.16	
ppT (m/s)	-98.45	99.42	-0.14	32.87	
hh/vv (dB)	NaN	Inf	Inf	-NaN	-NaN
vh/hh (dB)	NaN	-0.36	-26.70	-16.77	984.
hv/vv (dB)	NaN	-31.50	-49.49	-44.10	345.
hnjmp (dB)			-0.17		
vnjmp (dB)			-0.18		



CIFEX 2004 Data (cal/250ns+2.5/100ns-3.5/500ns: 53.0,50.0)

W2004-04-18-19-46-38 - PPMAG4, IRIG:1/0/2	Min	Max	Mean	Std	Varc%	
UTC: 19:46:38.65 to 22:40:44.81, Dur: 10446s ???	-67.85	-64.16	-65.91	-75.90	10.0	
TimeLngth: 10447.02s, TimeInt: 27ms (35.9pps)	hhN (dB)	-68.02	-64.32	-65.96	-75.91	10.1
TimeCor=-13.0s, PPS(min,max,med): 35,36,36	vvN (dB)	-16.78	1.79	-4.23	-4.15	102.
Timeint/DSPdiff(mn,min,mx):27,27,41/27,27,41	hhL (dB)	1.10	6.00	5.22	-2.52	16.8
Prof: 630 to 375278, NumProf(r/t): 35142/374648	vvL (dB)	ppN(m/s)	-12.46	12.58	-0.02	4.16
ProcTime/Recs: 20:35:38-20:51:58/105426-140567	ppT(m/s)	-98.45	99.42	-0.14	32.87	
ADAcqtime: 25ms; DRate: 200.8KB/s; Flags: 1, 0, 0	hh/vv (dB)	NaN	Inf	Inf	-NaN	-NaN
Pulse: 275ns, IFilt: 5.0MHz; ppPol: HH HV VV	vh/hh (dB)	NaN	-0.36	-26.70	-16.77	984.
TxPol: HHVV, PRF: 20 10 20 10 kHz, NoiseFlg:4,2	hv/vv (dB)	NaN	-31.50	-49.49	-44.10	345.
Range: Delay 75m, Spacing 30m, Gates 100	hn/jmp (dB)			-0.17		
Ave. Pulses: 84, Rng/Prof Aspect@90m/s: 12.0	vn/jmp (dB)			-0.18		