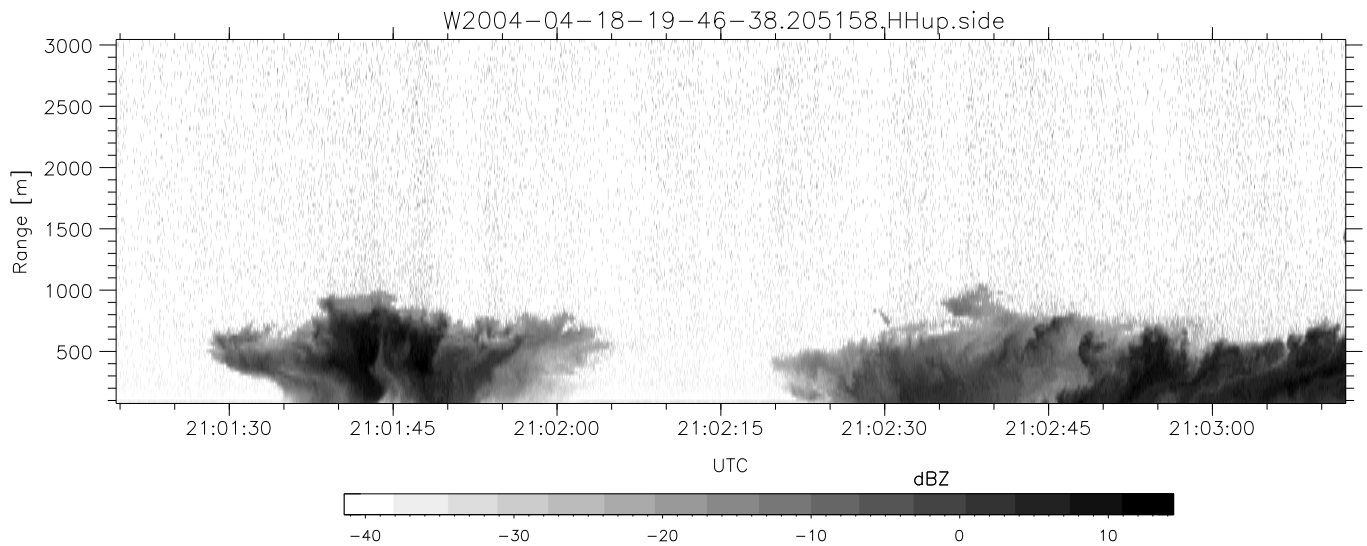
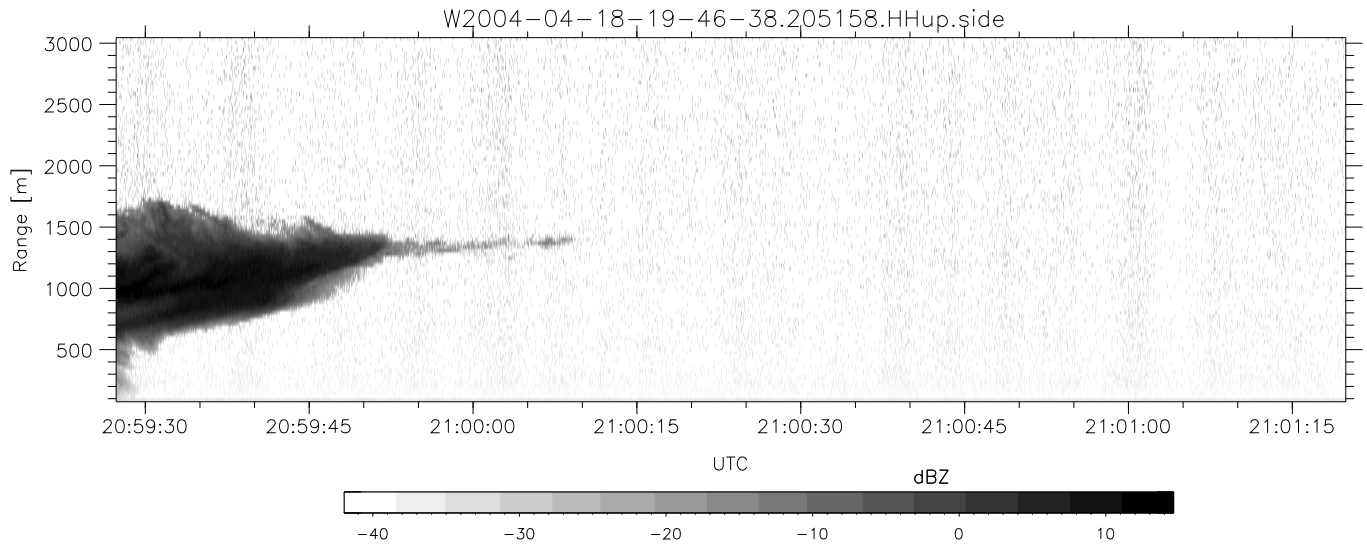
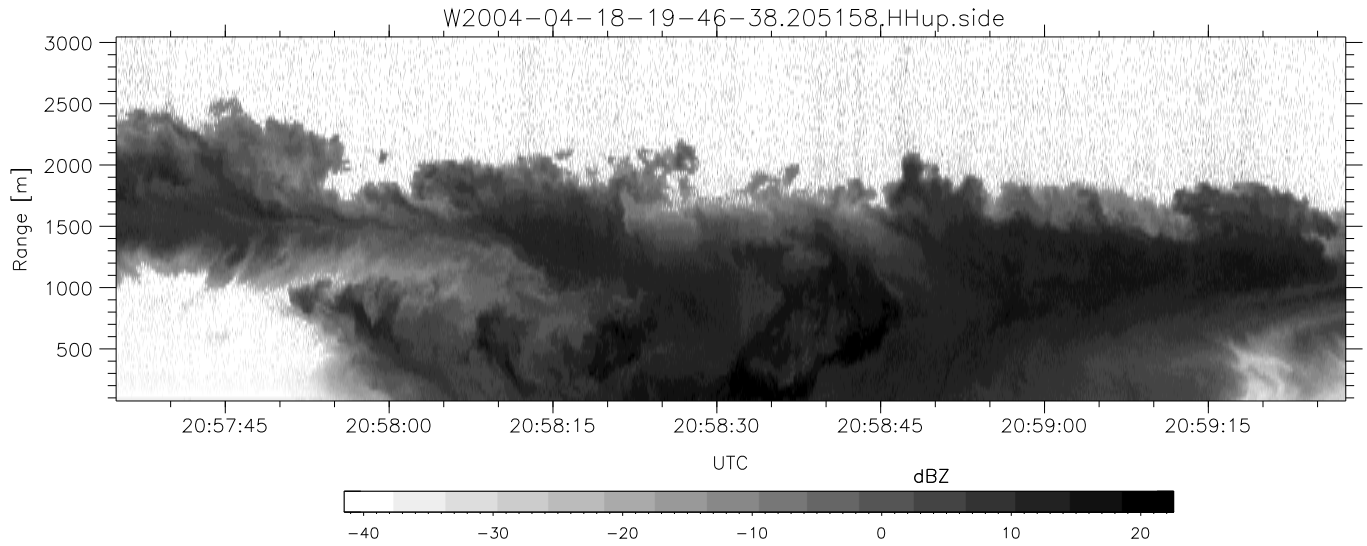


CIFEX 2004 Data (cal/250ns+2.5/100ns-3.5/500ns: 53.0,50.0)

W2004-04-18-19-46-38 - PPMAG4, IRIG:1/0/2
 UTC: 19:46:38.65 to 22:40:44.81, Dur: 10446s ???
 TimeLngth: 10447.02s, TimeInt: 27ms (35.9pps)
 TimeCor=-13.0s, PPS(min,max,med): 35,36,36
 Timeint/DSPdiff(mn,min,mx):27,27,33/27,27,27
 Prof: 630 to 375278, NumProf(r/t): 35142/374648
 ProcTime/Recs: 20:51:58-21:08:17/140568-175709
 ADacqtime: 25ms; DRate: 200.8KB/s; Flags: 1, 0, 0
 Pulse: 275ns, IFfilt: 5.0MHz; ppPol: HH HV VV
 TxPol: HHVV, PRF: 20 10 20 10 kHz, Noiseflg:4,2
 Range: Delay 75m, Spacing 30m, Gates 100
 Ave. Pulses: 84, Rng/Prof Aspect@90m/s: 12.0

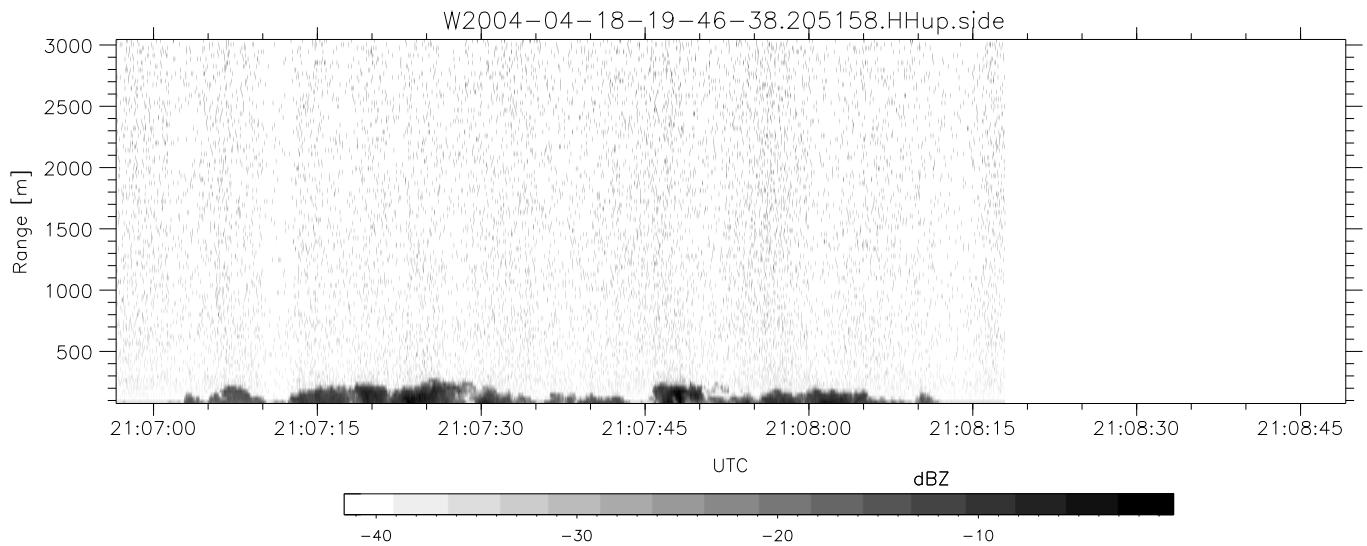
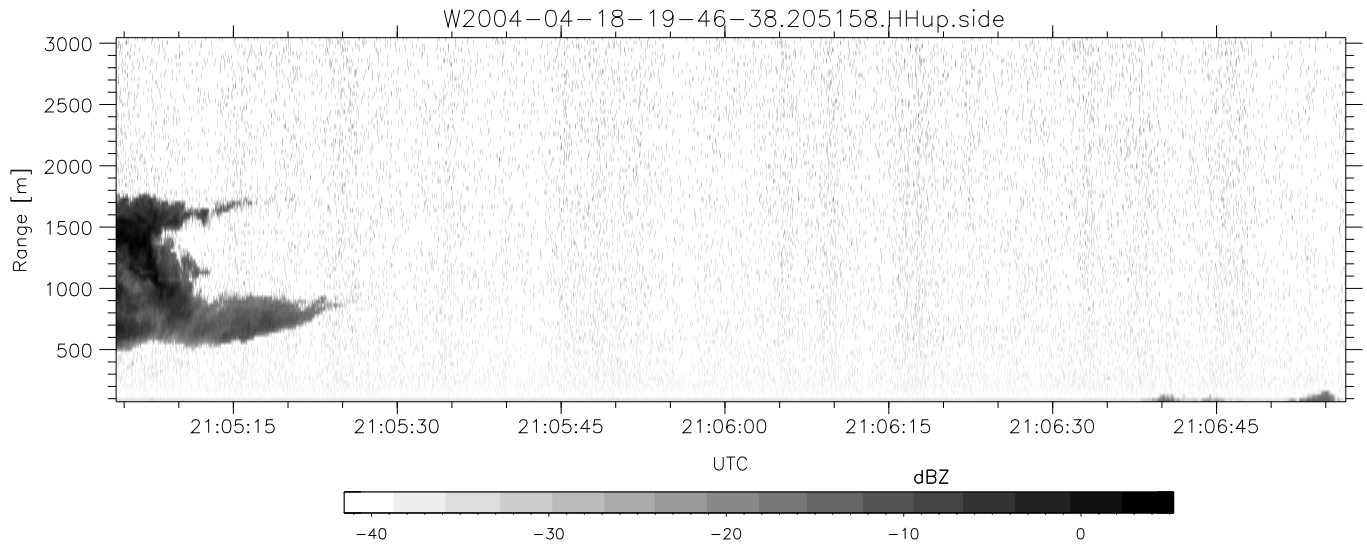
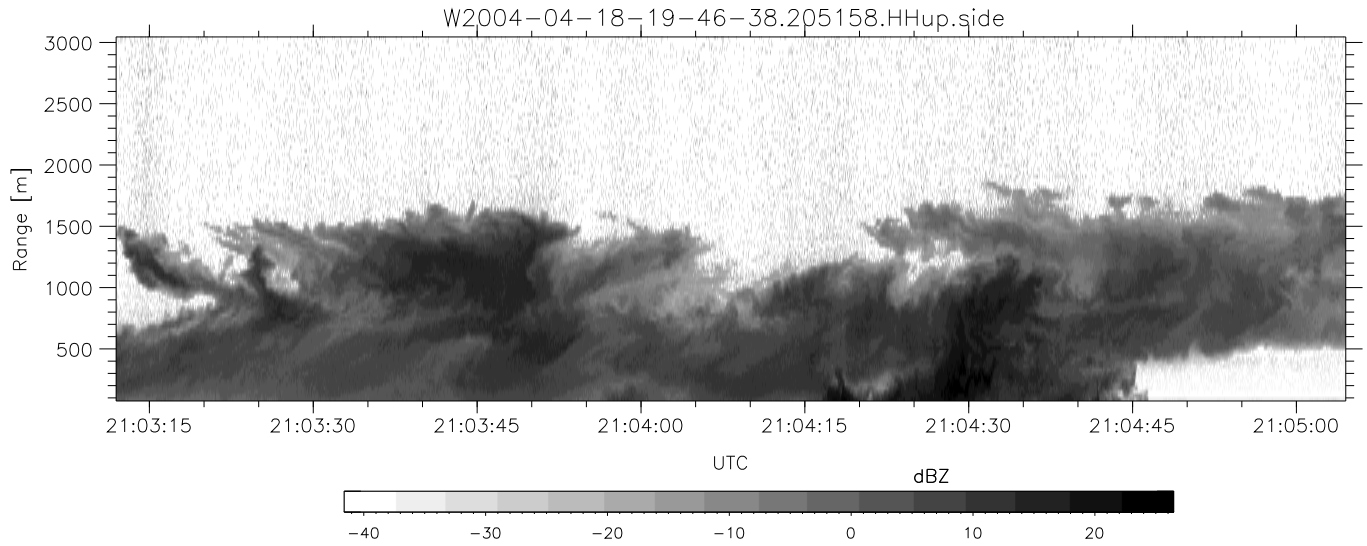
	Min	Max	Mean	Std	Varc%
hhN(dB)	-67.93	-64.13	-65.89	-75.82	10.2
vvN(dB)	-67.92	-64.28	-65.92	-75.79	10.3
hhL(dB)	-14.75	-3.31	-8.87	-13.06	38.1
vvL(dB)	-7.80	6.00	1.20	0.36	82.5
ppN(m/s)	-12.50	12.58	-0.00	4.16	
ppT(m/s)	-98.74	99.36	-0.00	32.83	
hh/vv(dB)	NaN	75.22	14.54	49.42	3079
vh/hh(dB)	NaN	-21.35	-38.97	-37.34	145.
hv/vv(dB)	NaN	-32.69	-47.38	-43.77	229.
hn_jmp(dB)			-0.16		
vn_jmp(dB)			-0.17		



CIFEX 2004 Data (cal/250ns+2.5/100ns-3.5/500ns: 53.0,50.0)

W2004-04-18-19-46-38 - PPMAG4, IRIG:1/0/2
 UTC: 19:46:38.65 to 22:40:44.81, Dur: 10446s ???
 TimeLngth: 10447.02s, TimeInt: 27ms (35.9pps)
 TimeCor=-13.0s, PPS(min,max,med): 35,36,36
 Timeint/DSPdiff(mn,min,mx):27,27,33/27,27,27
 Prof: 630 to 375278, NumProf(r/t): 35142/374648
 ProcTime/Recs: 20:51:58-21:08:17/140568-175709
 ADacqtime: 25ms; DRate: 200.8KB/s; Flags: 1, 0, 0
 Pulse: 275ns, IFilt: 5.0MHz; ppPol: HH HV VV
 TxPol: HHV, PRF: 20 10 20 10 kHz, NoiseFlg:4,2
 Range: Delay 75m, Spacing 30m, Gates 100
 Ave. Pulses: 84, Rng/Prof Aspect@90m/s: 12.0

	Min	Max	Mean	Std	Varc%
hhN (dB)	-67.93	-64.13	-65.89	-75.82	10.2
vvN (dB)	-67.92	-64.28	-65.92	-75.79	10.3
hhL (dB)	-14.75	-3.31	-8.87	-13.06	38.1
vvL (dB)	-7.80	6.00	1.20	0.36	82.5
ppN (m/s)	-12.50	12.58	-0.00	4.16	
ppT (m/s)	-98.74	99.36	-0.00	32.83	
hh/vv (dB)	NaN	75.22	14.54	49.42	3079
vh/hh (dB)	NaN	-21.35	-38.97	-37.34	145.
hv/vv (dB)	NaN	-32.69	-47.38	-43.77	229.
hn_jmp (dB)			-0.16		
vn_jmp (dB)			-0.17		



CIFEX 2004 Data (cal/250ns+2.5/100ns-3.5/500ns: 53.0,50.0)

W2004-04-18-19-46-38 - PPMAG4, IRIG:1/0/2
 UTC: 19:46:38.65 to 22:40:44.81, Dur: 10446s ???
 TimeLngth: 10447.02s, TimeInt: 27ms (35.9pps)
 TimeCor=-13.0s, PPS(min,max,med): 35,36,36
 Timeint/DSPdiff(mn,min,mx):27,27,33/27,27,27
 Prof: 630 to 375278, NumProf(r/t): 35142/374648
 ProcTime/Recs: 20:51:58-21:08:17/140568-175709
 ADacqtime: 25ms; DRate: 200.8KB/s; Flags: 1, 0, 0
 Pulse: 275ns, IFilt: 5.0MHz; ppPol: HH HV VV
 TxPol: HHVV, PRF: 20 10 20 10 kHz, NoiseFlg:4,2
 Range: Delay 75m, Spacing 30m, Gates 100
 Ave. Pulses: 84, Rng/Prof Aspect@90m/s: 12.0

	Min	Max	Mean	Std	Varc%
hhN (dB)	-67.93	-64.13	-65.89	-75.82	10.2
vvN (dB)	-67.92	-64.28	-65.92	-75.79	10.3
hhL (dB)	-14.75	-3.31	-8.87	-13.06	38.1
vvL (dB)	-7.80	6.00	1.20	0.36	82.5
ppN (m/s)	-12.50	12.58	-0.00	4.16	
ppT (m/s)	-98.74	99.36	-0.00	32.83	
hh/vv (dB)	NaN	75.22	14.54	49.42	3079
vh/hh (dB)	NaN	-21.35	-38.97	-37.34	145.
hv/vv (dB)	NaN	-32.69	-47.38	-43.77	229.
hn_jmp (dB)			-0.16		
vn_jmp (dB)			-0.17		