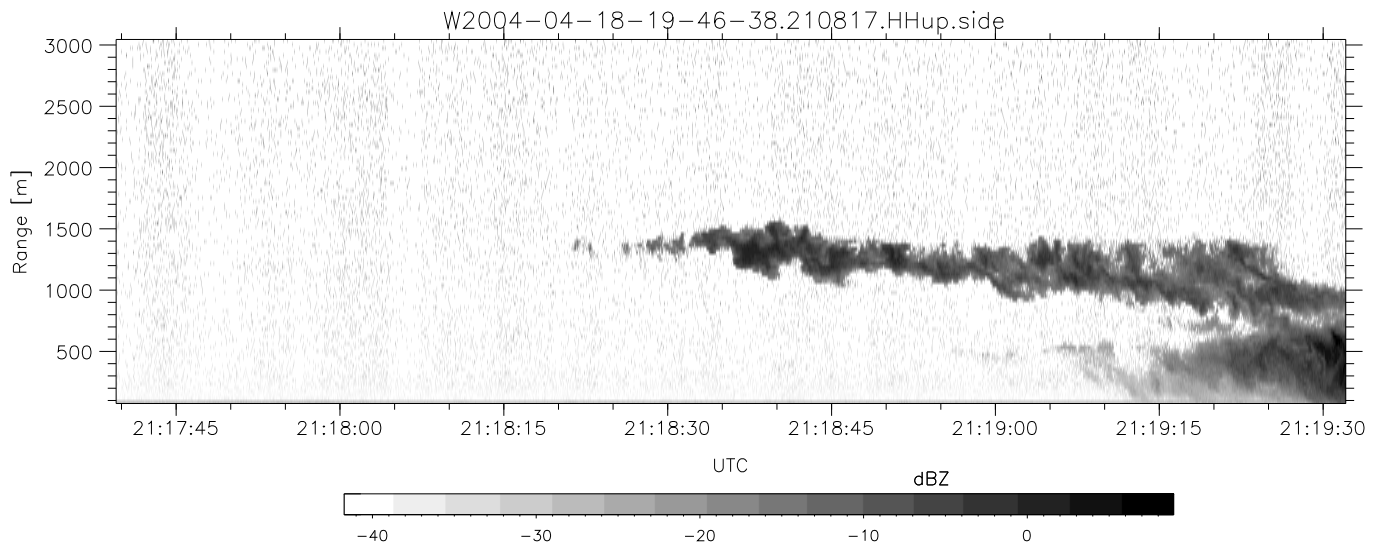
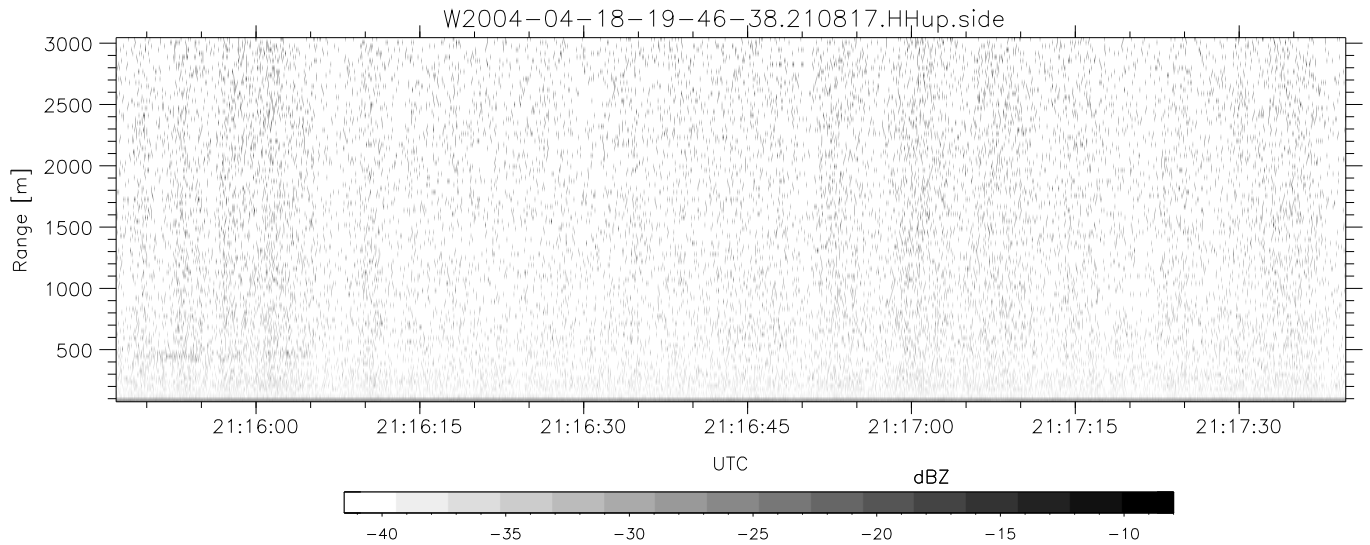
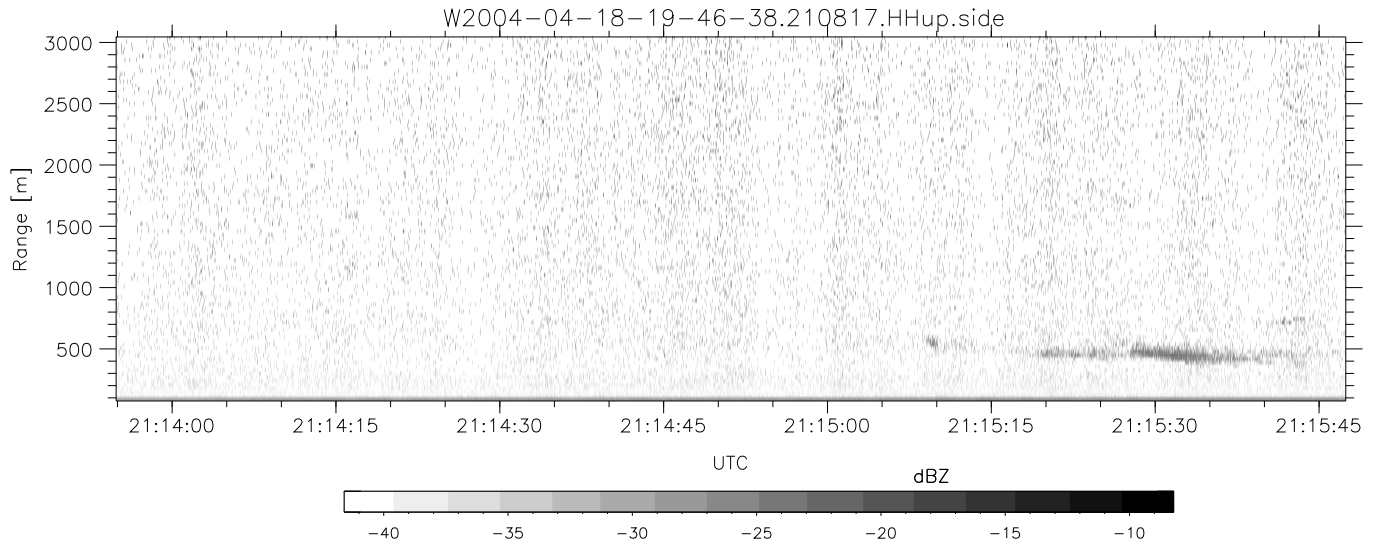


CIFEX 2004 Data (cal/250ns+2.5/100ns-3.5/500ns: 53.0,50.0)

W2004-04-18-19-46-38 - PPMAG4, IRIG:1/0/2  
 UTC: 19:46:38.65 to 22:40:44.81, Dur: 10446s ???  
 TimeLngth: 10447.02s, TimeInt: 27ms (35.9pps)  
 TimeCor=-13.0s, PPS(min,max,med): 35,36,36  
 Timeint/DSPdiff(mn,min,mx):27,27,36/27,27,27  
 Prof: 630 to 375278, NumProf(r/t): 35142/374648  
 ProcTime/Recs: 21:08:17-21:24:37/175710-210851  
 ADacqtime: 25ms; DRate: 200.8KB/s; Flags: 1, 0, 0  
 Pulse: 275ns, IFilt: 5.0MHz; ppPol: HH HV VV  
 TxPol: HHVV, PRF: 20 10 20 10 kHz, NoiseFlg:4,3  
 Range: Delay 75m, Spacing 30m, Gates 100  
 Ave. Pulses: 84, Rng/Prof Aspect@90m/s: 12.0

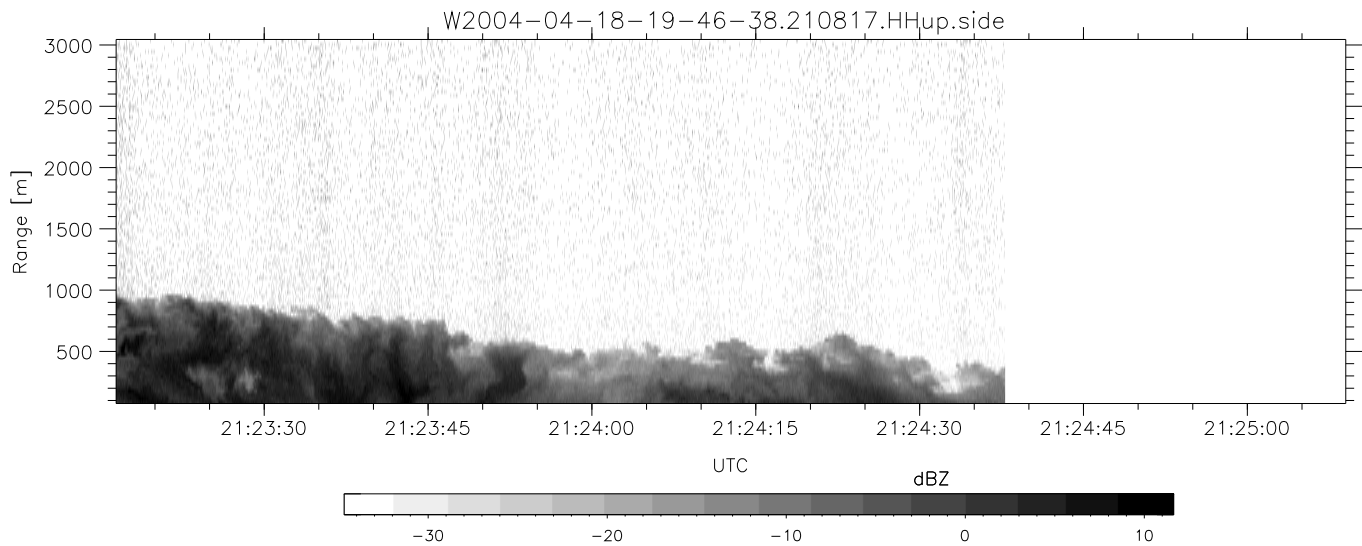
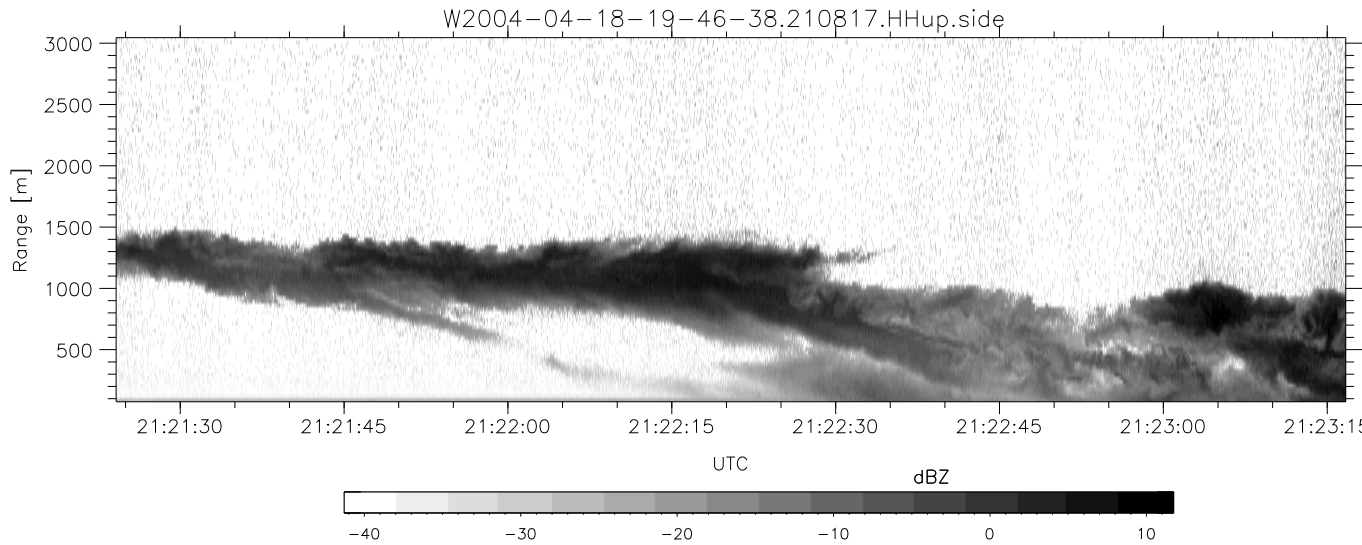
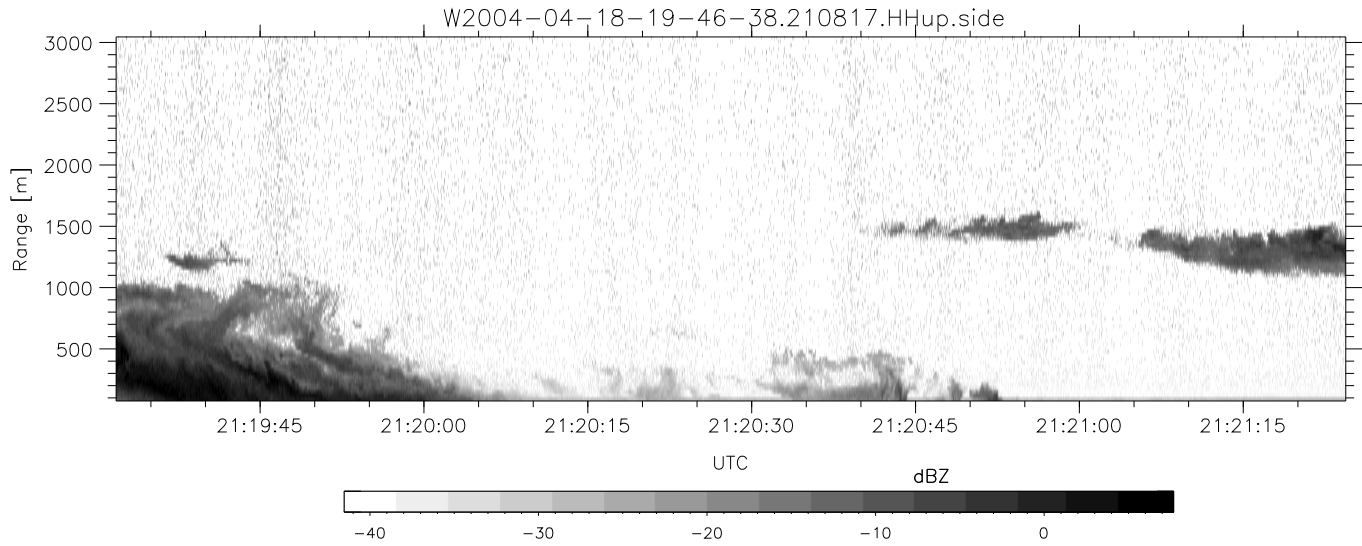
|             | Min    | Max    | Mean   | Std    | Varc% |
|-------------|--------|--------|--------|--------|-------|
| hhN (dB)    | -67.61 | -63.87 | -65.88 | -75.88 | 10.0  |
| vvN (dB)    | -67.82 | -63.75 | -65.90 | -75.64 | 10.6  |
| hhL (dB)    | -11.37 | 2.72   | -2.84  | -3.29  | 90.3  |
| vvL (dB)    | -7.09  | 6.00   | 1.24   | 0.33   | 81.2  |
| ppN (m/s)   | -12.73 | 12.88  | -0.05  | 4.14   |       |
| ppT (m/s)   | -100.5 | 101.78 | -0.43  | 32.67  |       |
| hh/vv (dB)  | NaN    | 91.57  | 39.15  | 65.18  | 4006  |
| vh/hh (dB)  | NaN    | -26.34 | -38.18 | -36.78 | 138.  |
| hv/vv (dB)  | NaN    | -32.99 | -48.63 | -43.78 | 305.  |
| hn_jmp (dB) |        |        | -0.16  |        |       |
| vn_jmp (dB) |        |        | -0.17  |        |       |



CIFEX 2004 Data (cal/250ns+2.5/100ns-3.5/500ns: 53.0,50.0)

W2004-04-18-19-46-38 - PPMAG4, IRIG:1/0/2  
 UTC: 19:46:38.65 to 22:40:44.81, Dur: 10446s ???  
 TimeLngth: 10447.02s, TimeInt: 27ms (35.9pps)  
 TimeCor=-13.0s, PPS(min,max,med): 35,36,36  
 Timeint/DSPdiff(mn,min,mx):27,27,36/27,27,27  
 Prof: 630 to 375278, NumProf(r/t): 35142/374648  
 ProcTime/Recs: 21:08:17-21:24:37/175710-210851  
 ADacqtime: 25ms; DRate: 200.8KB/s; Flags: 1, 0, 0  
 Pulse: 275ns, IFilt: 5.0MHz; ppPol: HH HV VV  
 TxPol: HHVV, PRF: 20 10 20 10 kHz, NoiseFlg:4,3  
 Range: Delay 75m, Spacing 30m, Gates 100  
 Ave. Pulses: 84, Rng/Prof Aspect@90m/s: 12.0

|            | Min    | Max    | Mean   | Std    | Varc% |
|------------|--------|--------|--------|--------|-------|
| hhN (dB)   | -67.61 | -63.87 | -65.88 | -75.88 | 10.0  |
| vvN (dB)   | -67.82 | -63.75 | -65.90 | -75.64 | 10.6  |
| hhL (dB)   | -11.37 | 2.72   | -2.84  | -3.29  | 90.3  |
| vvL (dB)   | -7.09  | 6.00   | 1.24   | 0.33   | 81.2  |
| ppN (m/s)  | -12.73 | 12.88  | -0.05  | 4.14   |       |
| ppT (m/s)  | -100.5 | 101.78 | -0.43  | 32.67  |       |
| hh/vv (dB) | NaN    | 91.57  | 39.15  | 65.18  | 4006  |
| vh/hh (dB) | NaN    | -26.34 | -38.18 | -36.78 | 138.  |
| hv/vv (dB) | NaN    | -32.99 | -48.63 | -43.78 | 305.  |
| hnjmp (dB) |        |        | -0.16  |        |       |
| vnjmp (dB) |        |        | -0.17  |        |       |



CIFEX 2004 Data (cal/250ns+2.5/100ns-3.5/500ns: 53.0,50.0)

W2004-04-18-19-46-38 - PPMAG4, IRIG:1/0/2  
 UTC: 19:46:38.65 to 22:40:44.81, Dur: 10446s ???  
 TimeLngth: 10447.02s, TimeInt: 27ms (35.9pps)  
 TimeCor=-13.0s, PPS(min,max,med): 35,36,36  
 Timeint/DSPdiff(mn,min,mx):27,27,36/27,27,27  
 Prof: 630 to 375278, NumProf(r/t): 35142/374648  
 ProcTime/Recs: 21:08:17-21:24:37/175710-210851  
 ADacqtime: 25ms; DRate: 200.8KB/s; Flags: 1, 0, 0  
 Pulse: 275ns, IFilt: 5.0MHz; ppPol: HH HV VV  
 TxPol: HHVV, PRF: 20 10 20 10 kHz, Noiseflg:4,3  
 Range: Delay 75m, Spacing 30m, Gates 100  
 Ave. Pulses: 84, Rng/Prof Aspect@90m/s: 12.0

|           | Min    | Max    | Mean   | Std    | Varc% |
|-----------|--------|--------|--------|--------|-------|
| hhN(dB)   | -67.61 | -63.87 | -65.88 | -75.88 | 10.0  |
| vvN(dB)   | -67.82 | -63.75 | -65.90 | -75.64 | 10.6  |
| hhL(dB)   | -11.37 | 2.72   | -2.84  | -3.29  | 90.3  |
| vvL(dB)   | -7.09  | 6.00   | 1.24   | 0.33   | 81.2  |
| ppN(m/s)  | -12.73 | 12.88  | -0.05  | 4.14   |       |
| ppT(m/s)  | -100.5 | 101.78 | -0.43  | 32.67  |       |
| hh/vv(dB) | NaN    | 91.57  | 39.15  | 65.18  | 4006  |
| vh/hh(dB) | NaN    | -26.34 | -38.18 | -36.78 | 138.  |
| hv/vv(dB) | NaN    | -32.99 | -48.63 | -43.78 | 305.  |
| hnjmp(dB) |        |        | -0.16  |        |       |
| vnjmp(dB) |        |        | -0.17  |        |       |