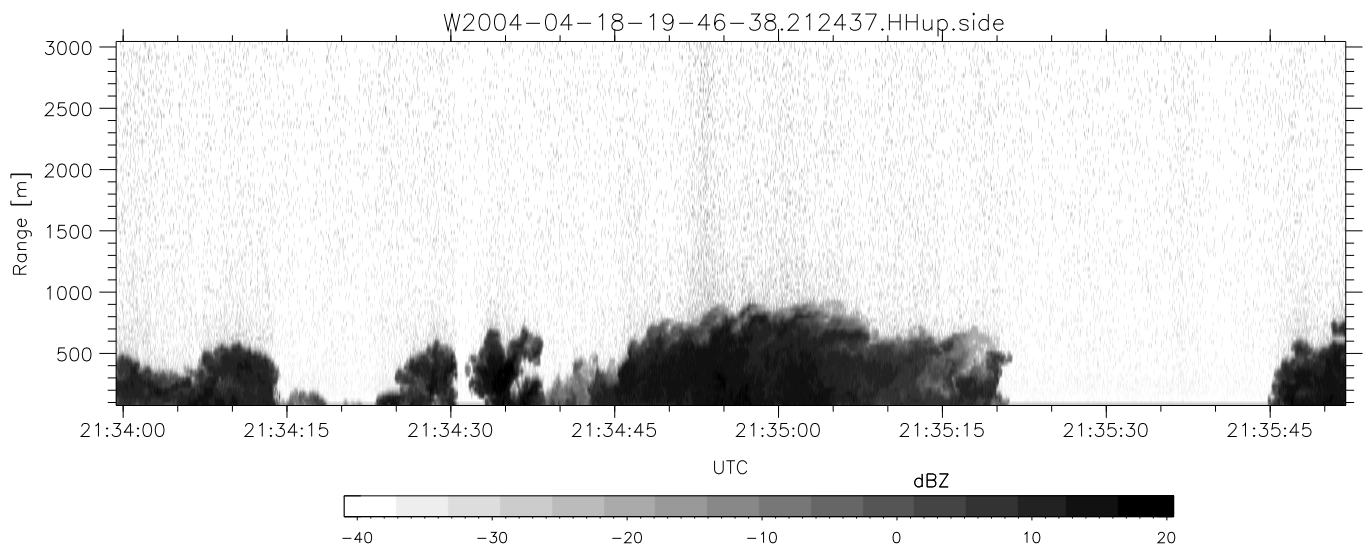
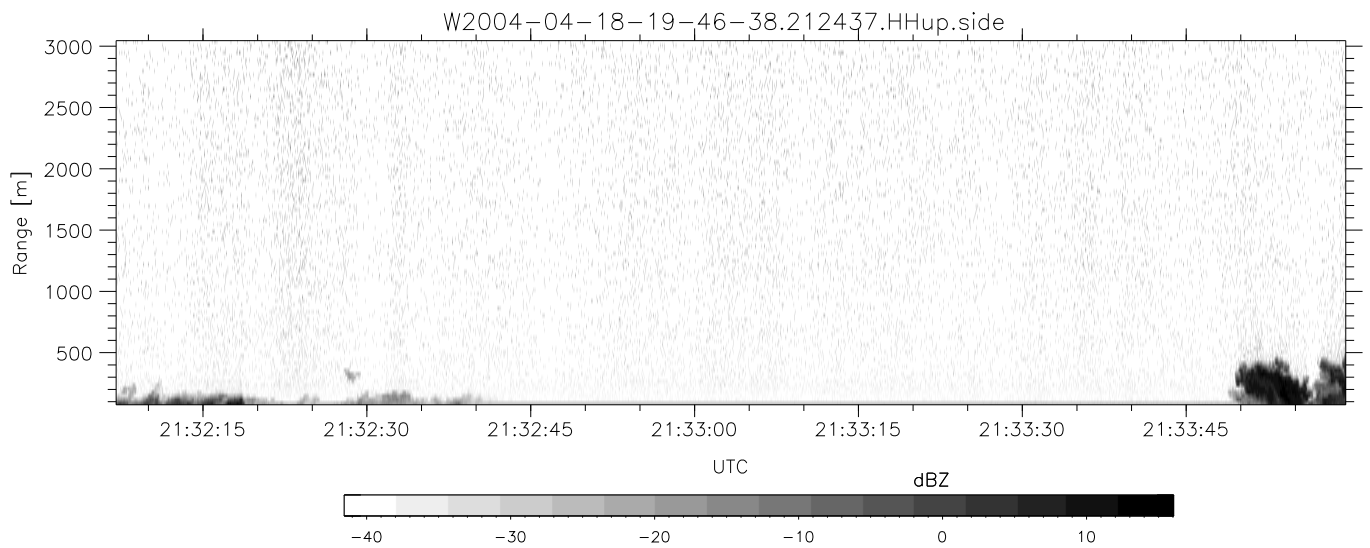
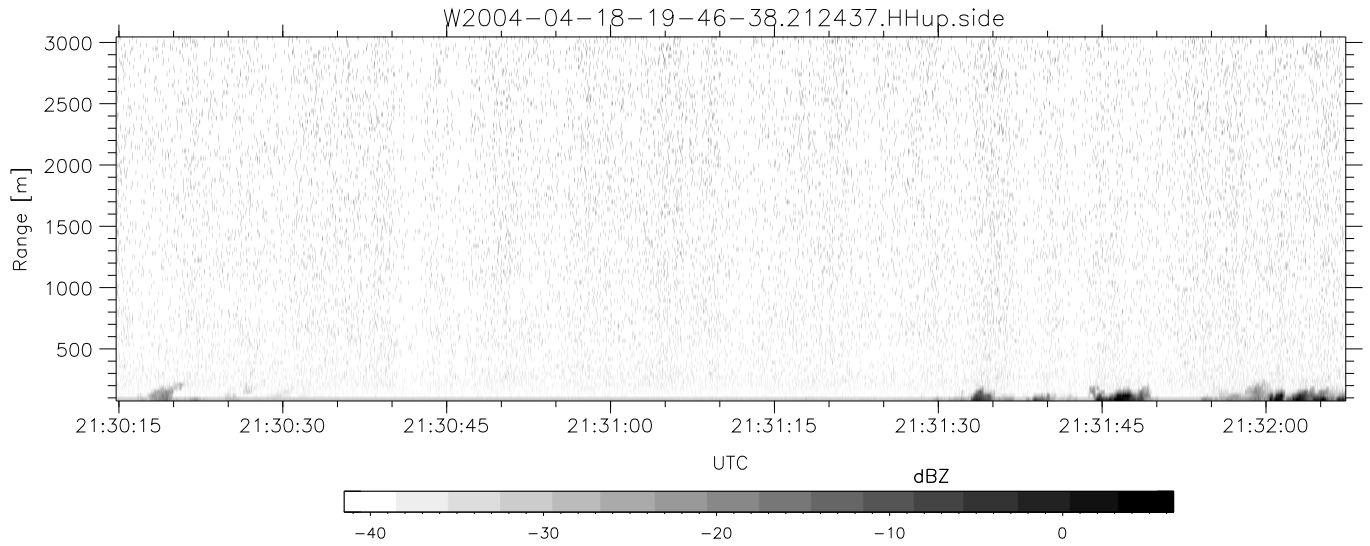


CIFEX 2004 Data (cal/250ns+2.5/100ns-3.5/500ns: 53.0,50.0)

W2004-04-18-19-46-38 - PPMAG4, IRIG:1/0/2
 UTC: 19:46:38.65 to 22:40:44.81, Dur: 10446s
 TimeLngth: 10446.66s, TimeInt: 27ms (35.9pps)
 TimeCor=-13.0s, PPS(min,max,med): 35,36,36
 Timeint/DSPdiff(mn,min,mx):27,27,31/27,27,28
 Prof: 630 to 375278, NumProf(r/t): 35142/374648
 ProcTime/Recs: 21:24:37-21:40:57/210852-245993
 ADacqtime: 25ms; DRate: 200.8KB/s; Flags: 1, 0, 0
 Pulse: 275ns, IFilt: 5.0MHz; ppPol: HH HV VV
 TxPol: HHVV, PRF: 20 10 20 10 kHz, NoiseFlg:4,3
 Range: Delay 75m, Spacing 30m, Gates 100
 Ave. Pulses: 84, Rng/Prof Aspect@90m/s: 12.0

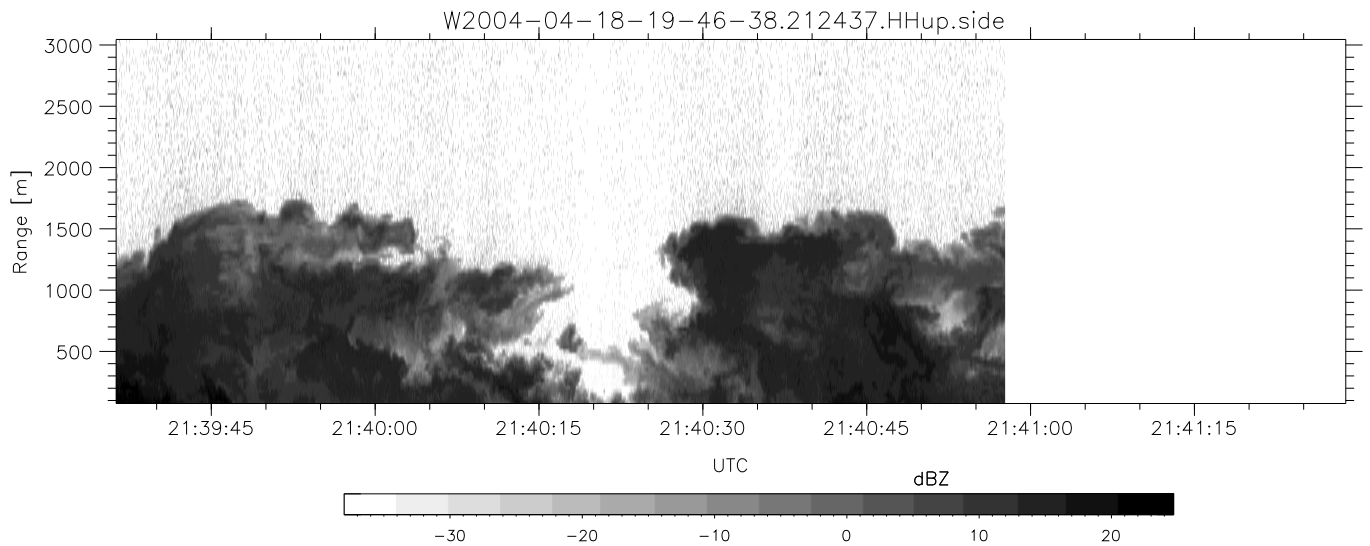
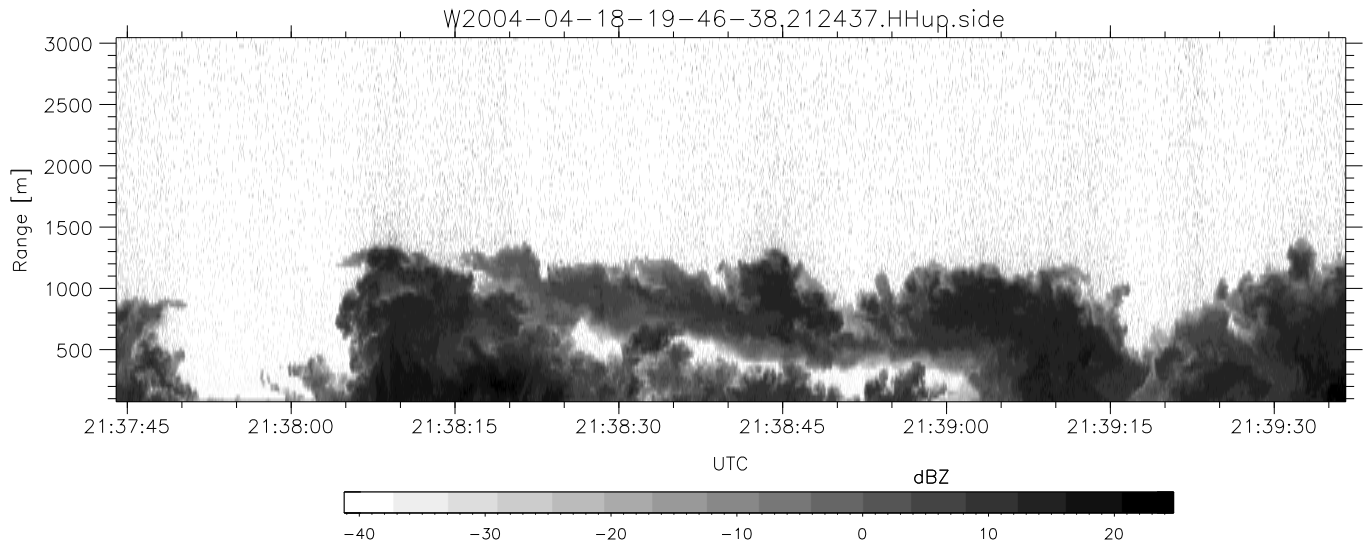
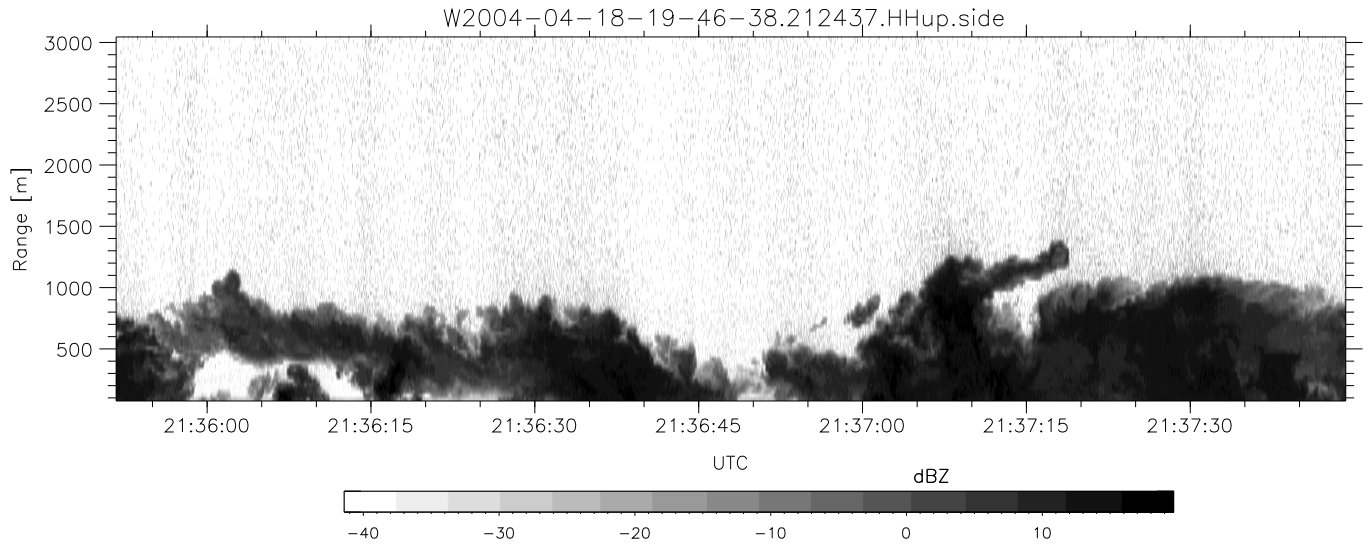
	Min	Max	Mean	Std	Varc%
hhN(dB)	-67.56	-64.10	-65.79	-75.76	10.1
vvN(dB)	-68.01	-64.10	-65.71	-75.53	10.4
hhL(dB)	-11.31	2.81	-1.95	-4.51	55.5
vvL(dB)	-6.07	6.00	2.12	-0.47	55.2
ppN(m/s)	-12.69	12.49	-0.04	4.15	
ppT(m/s)	-100.2	98.66	-0.29	32.81	
hh/vv(dB)	NaN	71.36	21.11	45.46	2724
vh/hh(dB)	NaN	-21.95	-38.65	-37.06	144.
hv/vv(dB)	NaN	-31.77	-48.93	-43.37	360.
hnjmp(dB)			-0.16		
vnjmp(dB)			-0.16		



CIFEX 2004 Data (cal/250ns+2.5/100ns-3.5/500ns: 53.0,50.0)

W2004-04-18-19-46-38 - PPMAG4, IRIG:1/0/2
 UTC: 19:46:38.65 to 22:40:44.81, Dur: 10446s
 TimeLngth: 10446.66s, TimeInt: 27ms (35.9pps)
 TimeCor=-13.0s, PPS(min,max,med): 35,36,36
 Timeint/DSPdiff(mn,min,mx):27,27,31/27,27,28
 Prof: 630 to 375278, NumProf(r/t): 35142/374648
 ProcTime/Recs: 21:24:37-21:40:57/210852-245993
 ADacqtime: 25ms; DRate: 200.8KB/s; Flags: 1, 0, 0
 Pulse: 275ns, IFilt: 5.0MHz; ppPol: HH HV VV
 TxPol: HHVV, PRF: 20 10 20 10 kHz, NoiseFlg:4,3
 Range: Delay 75m, Spacing 30m, Gates 100
 Ave. Pulses: 84, Rng/Prof Aspect@90m/s: 12.0

	Min	Max	Mean	Std	Varc%
hhN (dB)	-67.56	-64.10	-65.79	-75.76	10.1
vvN (dB)	-68.01	-64.10	-65.71	-75.53	10.4
hhL (dB)	-11.31	2.81	-1.95	-4.51	55.5
vvL (dB)	-6.07	6.00	2.12	-0.47	55.2
ppN (m/s)	-12.69	12.49	-0.04	4.15	
ppT (m/s)	-100.2	98.66	-0.29	32.81	
hh/vv (dB)	NaN	71.36	21.11	45.46	2724
vh/hh (dB)	NaN	-21.95	-38.65	-37.06	144.
hv/vv (dB)	NaN	-31.77	-48.93	-43.37	360.
hn_jmp (dB)			-0.16		
vn_jmp (dB)			-0.16		



CIFEX 2004 Data (cal/250ns+2.5/100ns-3.5/500ns: 53.0,50.0)

W2004-04-18-19-46-38 - PPMAG4, IRIG:1/0/2
 UTC: 19:46:38.65 to 22:40:44.81, Dur: 10446s
 TimeLngth: 10446.66s, TimeInt: 27ms (35.9pps)
 TimeCor=-13.0s, PPS(min,max,med): 35,36,36
 Timeint/DSPdiff(mn,min,mx):27,27,31/27,27,28
 Prof: 630 to 375278, NumProf(r/t): 35142/374648
 ProcTime/Recs: 21:24:37-21:40:57/210852-245993
 ADacqtime: 25ms; DRate: 200.8KB/s; Flags: 1, 0, 0
 Pulse: 275ns, IFilt: 5.0MHz; ppPol: HH HV VV
 TxPol: HHVV, PRF: 20 10 20 10 kHz, NoiseFlg:4,3
 Range: Delay 75m, Spacing 30m, Gates 100
 Ave. Pulses: 84, Rng/Prof Aspect@90m/s: 12.0

	Min	Max	Mean	Std	Varc%
hhN (dB)	-67.56	-64.10	-65.79	-75.76	10.1
vvN (dB)	-68.01	-64.10	-65.71	-75.53	10.4
hhL (dB)	-11.31	2.81	-1.95	-4.51	55.5
vvL (dB)	-6.07	6.00	2.12	-0.47	55.2
ppN (m/s)	-12.69	12.49	-0.04	4.15	
ppT (m/s)	-100.2	98.66	-0.29	32.81	
hh/vv (dB)	NaN	71.36	21.11	45.46	2724
vh/hh (dB)	NaN	-21.95	-38.65	-37.06	144.
hv/vv (dB)	NaN	-31.77	-48.93	-43.37	360.
hn_jmp (dB)			-0.16		
vn_jmp (dB)			-0.16		