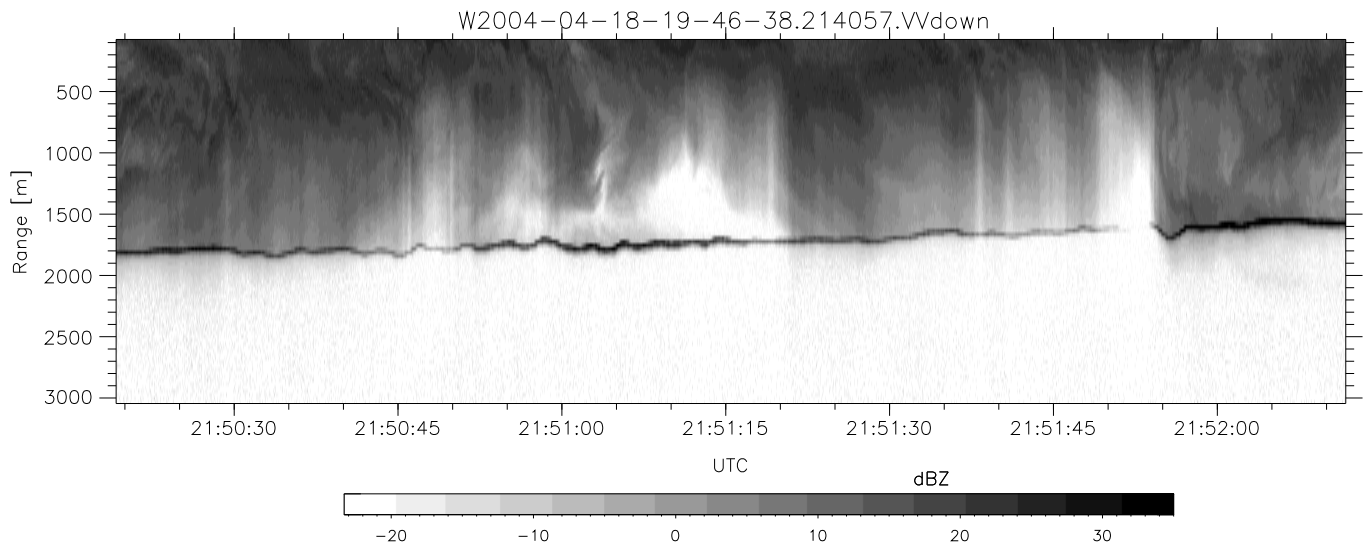
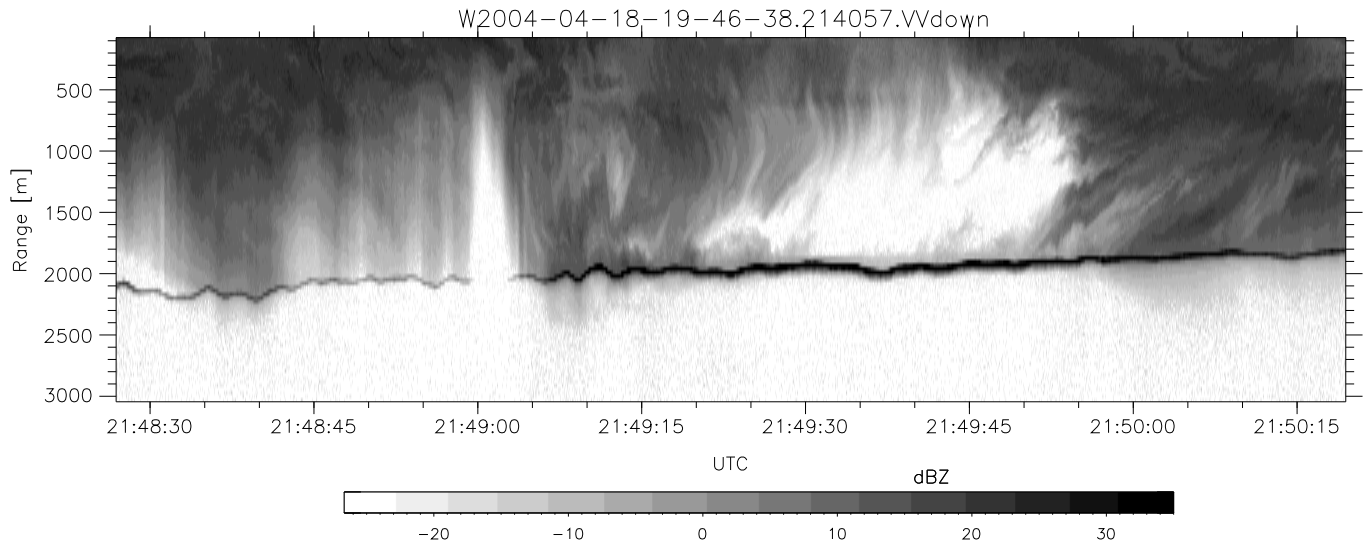
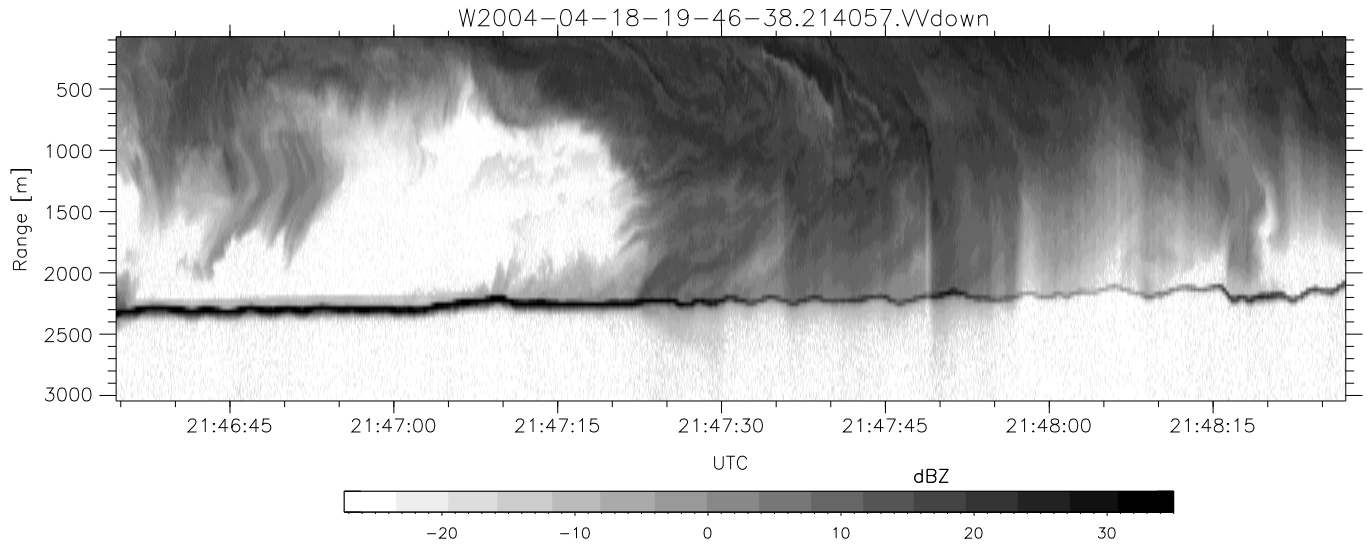


CIFEX 2004 Data (cal/250ns+2.5/100ns-3.5/500ns: 53.0,50.0)

W2004-04-18-19-46-38 - PPMAG4, IRIG:1/0/2  
 UTC: 19:46:38.65 to 22:40:44.81, Dur: 10446s  
 TimeLngth: 10446.66s, TimeInt: 27ms (35.9pps)  
 TimeCor=-13.0s, PPS(min,max,med): 35,36,36  
 Timeint/DSPdiff(mn,min,mx):27,27,27/27,27,27  
 Prof: 630 to 375278, NumProf(r/t): 35142/374648  
 ProcTime/Recs: 21:40:57-21:57:17/245994-281135  
 ADacqtime: 25ms; DRate: 200.8KB/s; Flags: 1, 0, 0  
 Pulse: 275ns, IFfilt: 5.0MHz; ppPol: HH HV VV  
 TxPol: HHVV, PRF: 20 10 20 10 kHz, Noiseflg:1,3  
 Range: Delay 75m, Spacing 30m, Gates 100  
 Ave. Pulses: 84, Rng/Prof Aspect@90m/s: 12.0

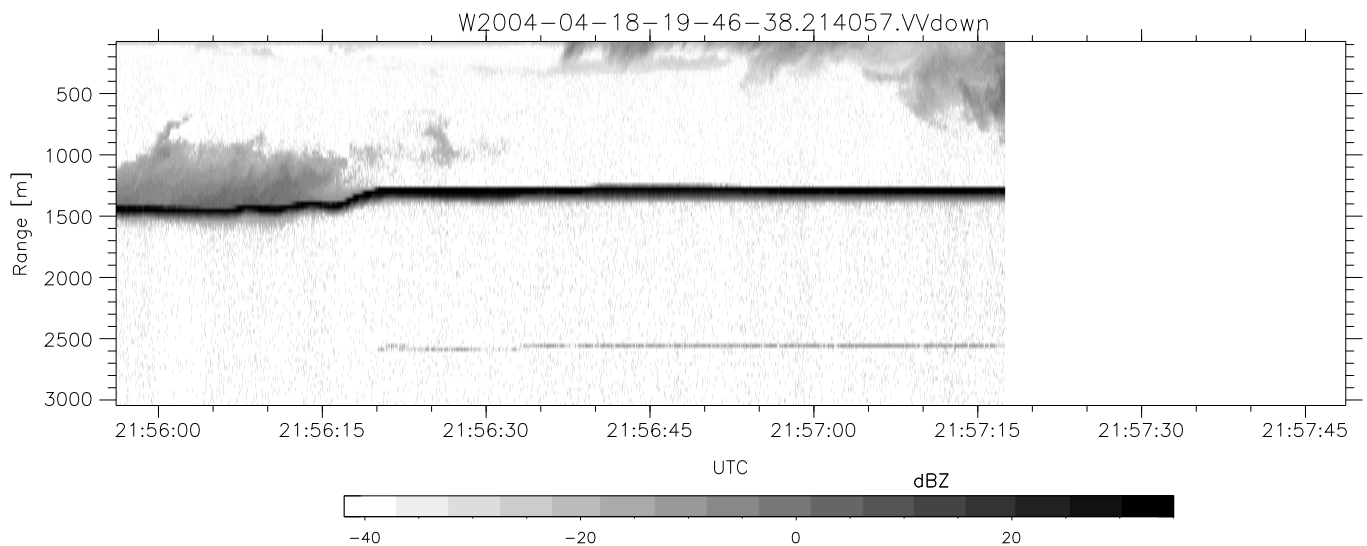
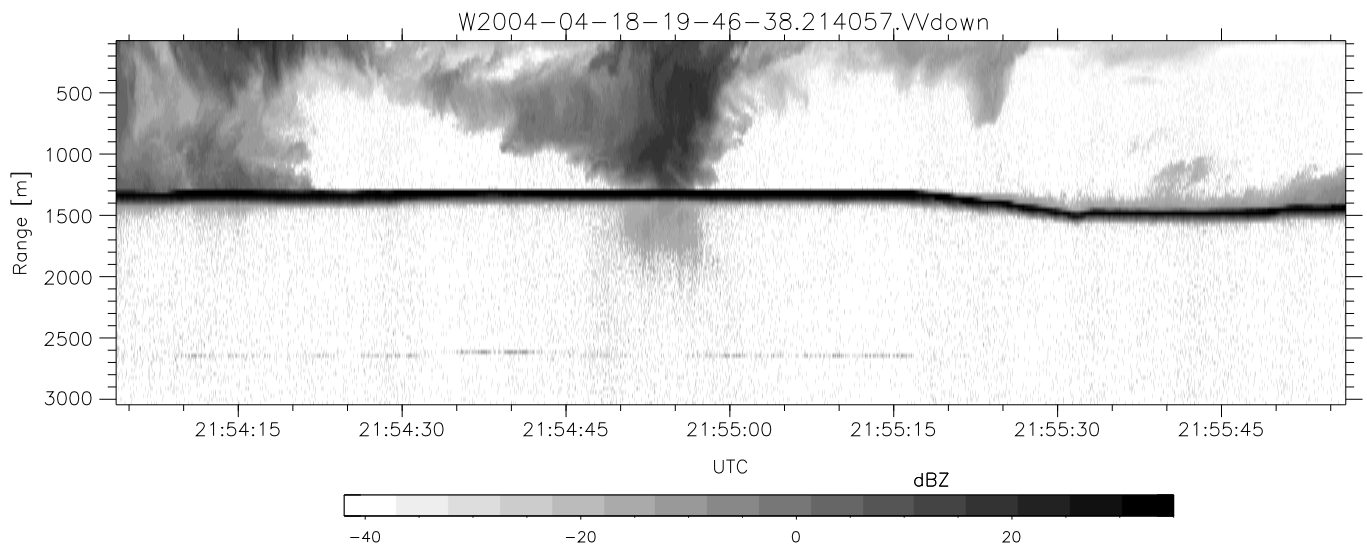
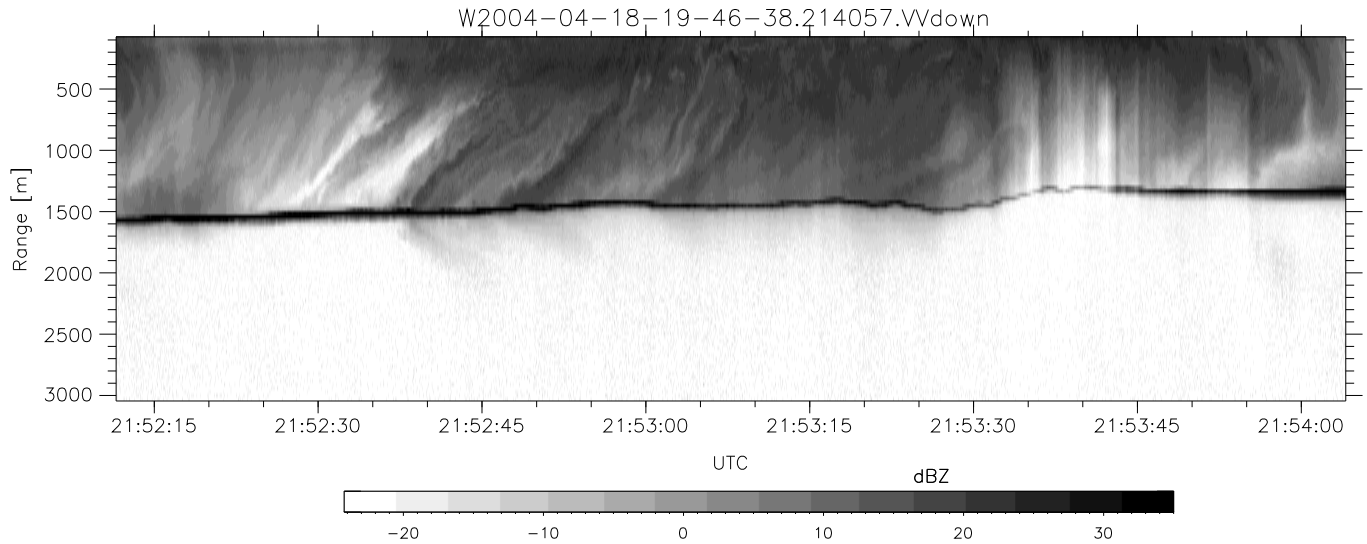
	Min	Max	Mean	Std	Varc%
hhN(dB)	-67.42	-63.90	-65.48	-75.44	10.1
vvN(dB)	-67.60	-63.95	-65.62	-75.56	10.1
hhL(dB)	-24.31	2.96	-2.15	-2.76	86.9
vvL(dB)	-13.71	6.00	3.04	1.49	70.0
ppN(m/s)	-12.85	12.47	-0.02	4.18	
ppT(m/s)	-101.5	98.49	-0.20	33.01	
hh/vv(dB)	NaN	86.49	27.27	56.30	7996
vh/hh(dB)	NaN	-12.97	-41.12	-37.05	255.
hv/vv(dB)	NaN	-30.46	-48.15	-43.75	275.
hnjmp(dB)			-0.16		
vnjmp(dB)			-0.16		



CIFEX 2004 Data (cal/250ns+2.5/100ns-3.5/500ns: 53.0,50.0)

W2004-04-18-19-46-38 - PPMAG4, IRIG:1/0/2  
 UTC: 19:46:38.65 to 22:40:44.81, Dur: 10446s  
 TimeLngth: 10446.66s, TimeInt: 27ms (35.9pps)  
 TimeCor=-13.0s, PPS(min,max,med): 35,36,36  
 Timeint/DSPdiff(mn,min,mx):27,27,27/27,27,27  
 Prof: 630 to 375278, NumProf(r/t): 35142/374648  
 ProcTime/Recs: 21:40:57-21:57:17/245994-281135  
 ADacqtime: 25ms; DRate: 200.8KB/s; Flags: 1, 0, 0  
 Pulse: 275ns, IFilt: 5.0MHz; ppPol: HH HV VV  
 TxPol: HHVV, PRF: 20 10 20 10 kHz, NoiseFlg:1,3  
 Range: Delay 75m, Spacing 30m, Gates 100  
 Ave. Pulses: 84, Rng/Prof Aspect@90m/s: 12.0

	Min	Max	Mean	Std	Varc%
hhN (dB)	-67.42	-63.90	-65.48	-75.44	10.1
vvN (dB)	-67.60	-63.95	-65.62	-75.56	10.1
hhL (dB)	-24.31	2.96	-2.15	-2.76	86.9
vvL (dB)	-13.71	6.00	3.04	1.49	70.0
ppN (m/s)	-12.85	12.47	-0.02	4.18	
ppT (m/s)	-101.5	98.49	-0.20	33.01	
hh/vv (dB)	NaN	86.49	27.27	56.30	7996
vh/hh (dB)	NaN	-12.97	-41.12	-37.05	255.
hv/vv (dB)	NaN	-30.46	-48.15	-43.75	275.
hnjmp (dB)			-0.16		
vnjmp (dB)			-0.16		



CIFEX 2004 Data (cal/250ns+2.5/100ns-3.5/500ns: 53.0,50.0)

W2004-04-18-19-46-38 - PPMAG4, IRIG:1/0/2  
 UTC: 19:46:38.65 to 22:40:44.81, Dur: 10446s  
 TimeLngth: 10446.66s, TimeInt: 27ms (35.9pps)  
 TimeCor=-13.0s, PPS(min,max,med): 35,36,36  
 Timeint/DSPdiff(mn,min,mx):27,27,27/27,27,27  
 Prof: 630 to 375278, NumProf(r/t): 35142/374648  
 ProcTime/Recs: 21:40:57-21:57:17/245994-281135  
 ADacqtime: 25ms; DRate: 200.8KB/s; Flags: 1, 0, 0  
 Pulse: 275ns, IFfilt: 5.0MHz; ppPol: HH HV VV  
 TxPol: HHVV, PRF: 20 10 20 10 kHz, Noiseflg:1,3  
 Range: Delay 75m, Spacing 30m, Gates 100  
 Ave. Pulses: 84, Rng/Prof Aspect@90m/s: 12.0

	Min	Max	Mean	Std	Varc%
hhN(dB)	-67.42	-63.90	-65.48	-75.44	10.1
vvN(dB)	-67.60	-63.95	-65.62	-75.56	10.1
hhL(dB)	-24.31	2.96	-2.15	-2.76	86.9
vvL(dB)	-13.71	6.00	3.04	1.49	70.0
ppN(m/s)	-12.85	12.47	-0.02	4.18	
ppT(m/s)	-101.5	98.49	-0.20	33.01	
hh/vv(dB)	NaN	86.49	27.27	56.30	7996
vh/hh(dB)	NaN	-12.97	-41.12	-37.05	255.
hv/vv(dB)	NaN	-30.46	-48.15	-43.75	275.
hnjmp(dB)			-0.16		
vnjmp(dB)			-0.16		