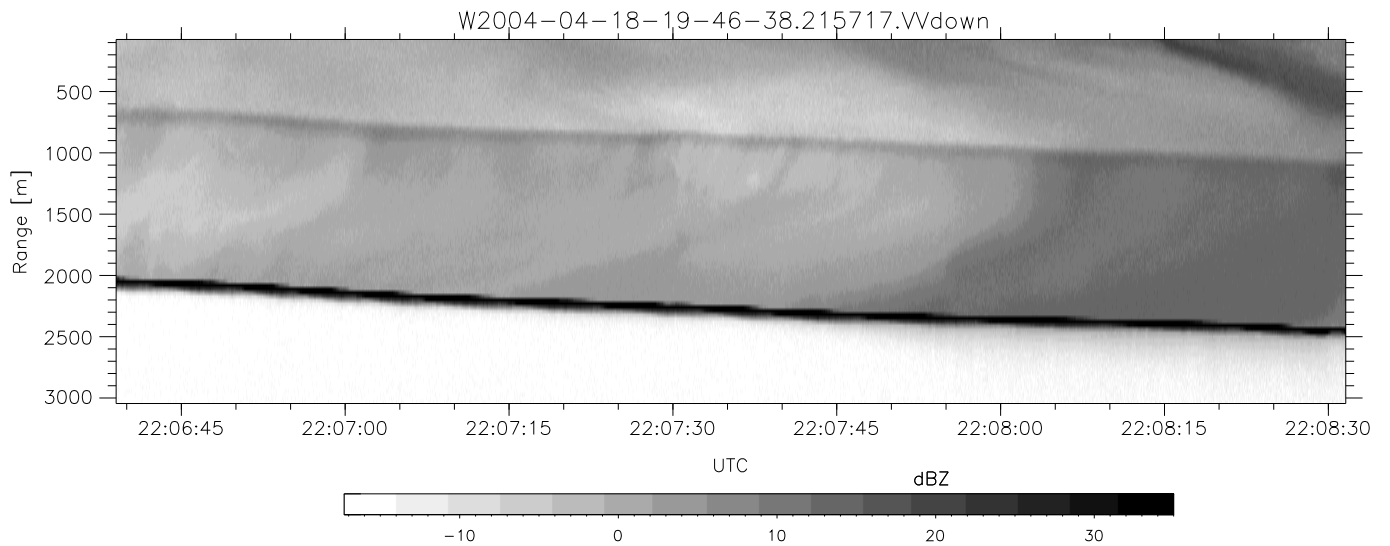
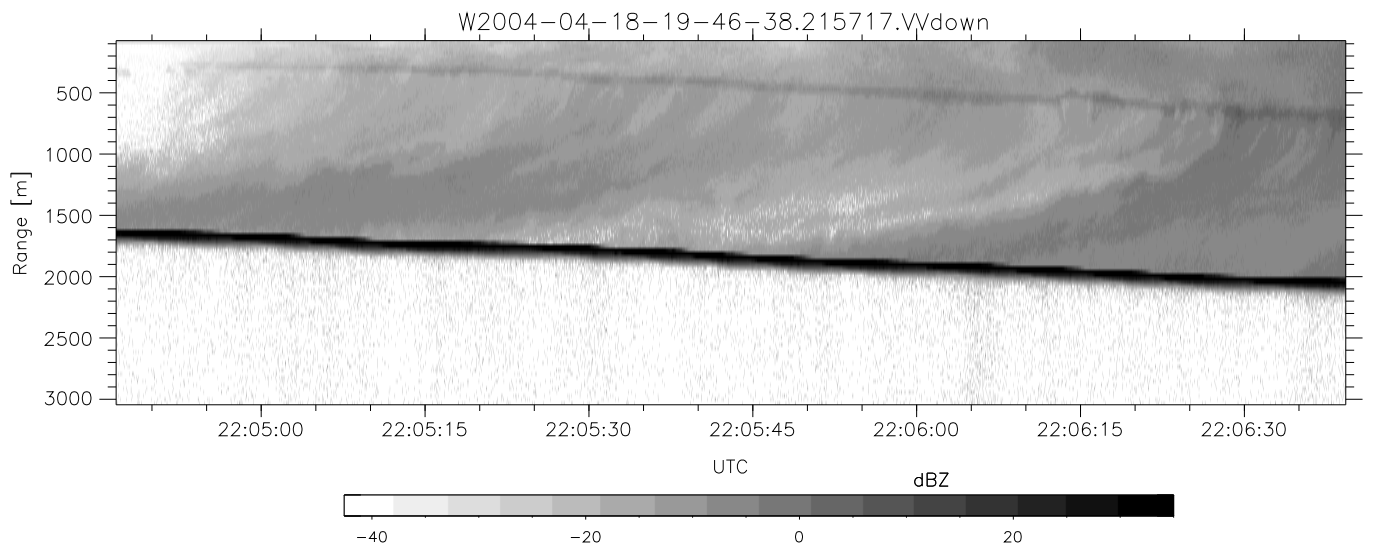
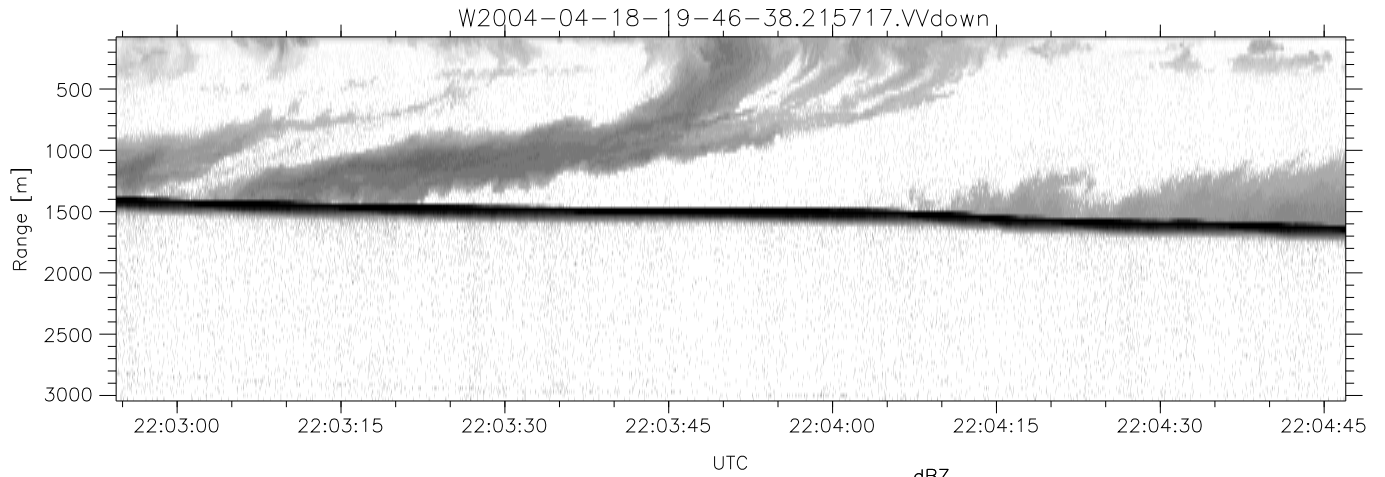


CIFEX 2004 Data (cal/250ns+2.5/100ns-3.5/500ns: 53.0,50.0)

W2004-04-18-19-46-38 - PPMAG4, IRIG:1/0/2
 UTC: 19:46:38.65 to 22:40:44.81, Dur: 10446s
 TimeLngth: 10446.66s, TimeInt: 27ms (35.9pps)
 TimeCor=-13.0s, PPS(min,max,med): 35,36,36
 Timeint/DSPdiff(mn,min,mx):27,27,29/27,27,27
 Prof: 630 to 375278, NumProf(r/t): 35142/374648
 ProcTime/Recs: 21:57:17-22:13:37/281136-316277
 ADacqtime: 25ms; DRate: 200.8KB/s; Flags: 1, 0, 0
 Pulse: 275ns, IFfilt: 5.0MHz; ppPol: HH HV VV
 TxPol: HHVV, PRF: 20 10 20 10 kHz, Noiseflg:4,3
 Range: Delay 75m, Spacing 30m, Gates 100
 Ave. Pulses: 84, Rng/Prof Aspect@90m/s: 12.0

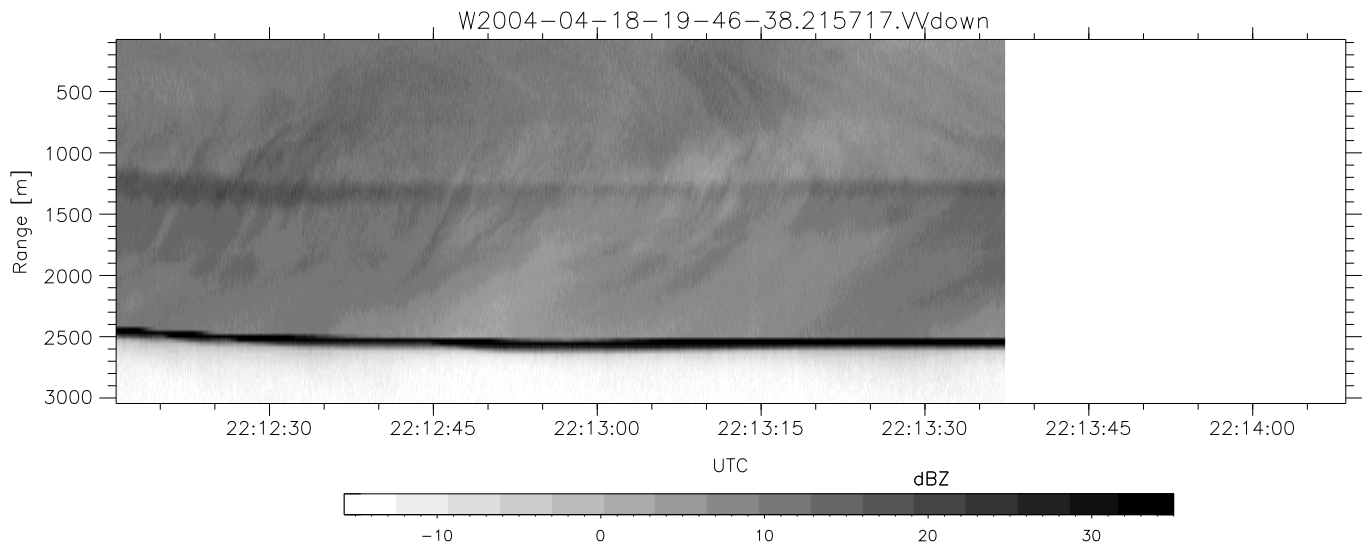
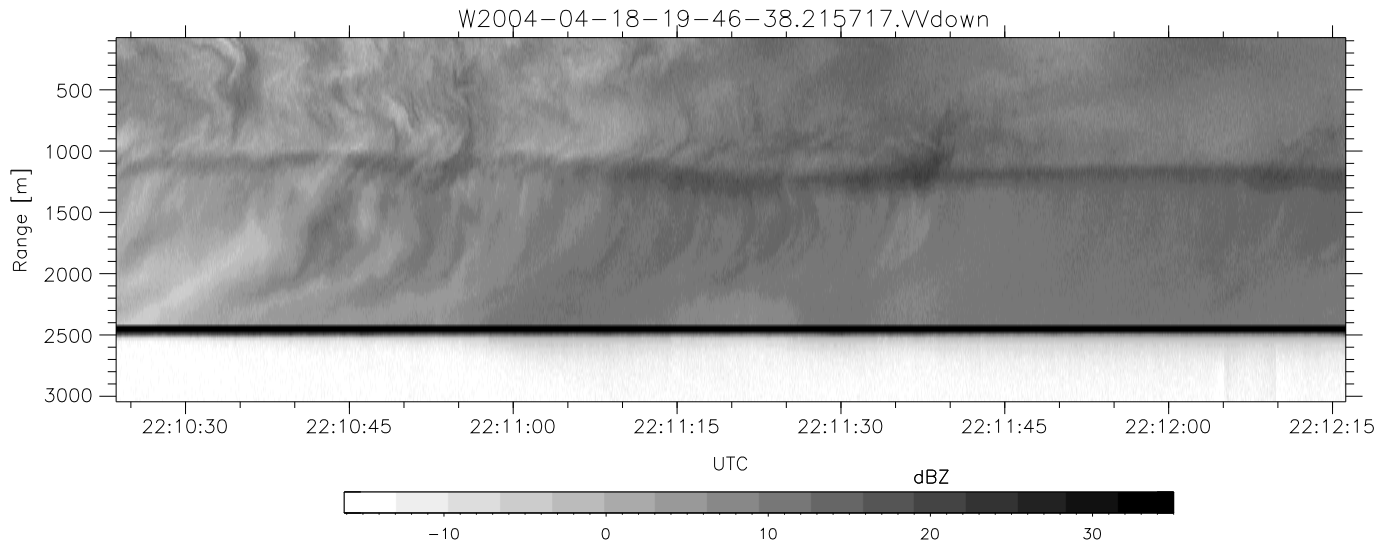
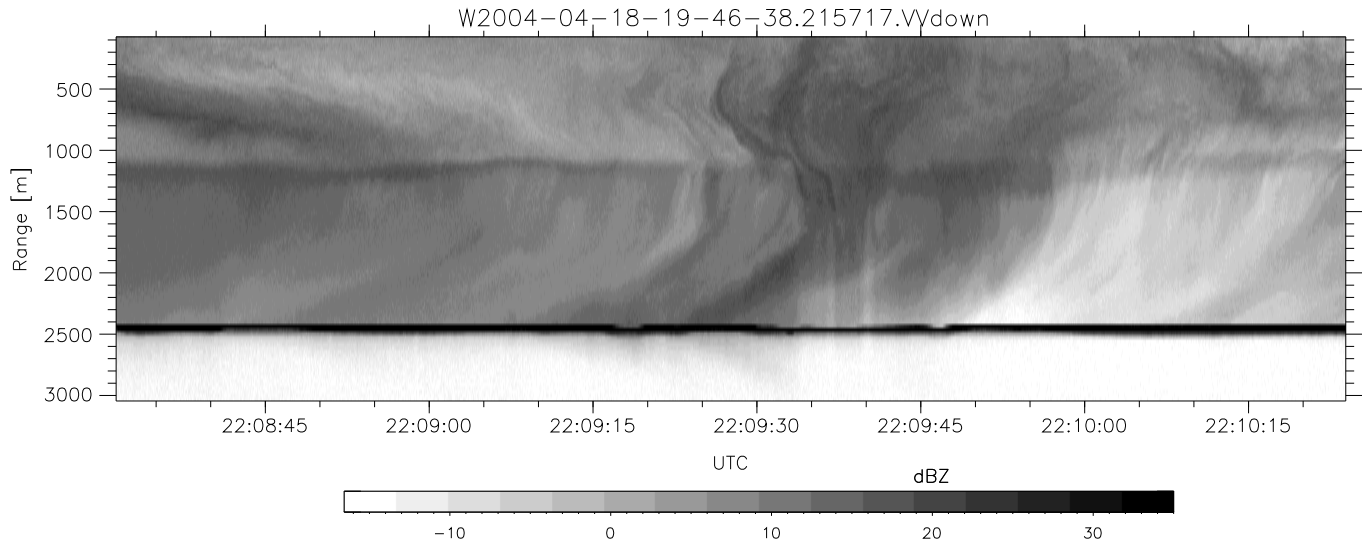
	Min	Max	Mean	Std	Varc%
hhN(dB)	-67.56	-63.90	-65.49	-75.48	10.0
vvN(dB)	-67.82	-63.02	-65.52	-75.35	10.4
hhL(dB)	-23.51	2.80	-1.82	-2.48	86.0
vvL(dB)	-12.71	6.00	4.42	1.18	47.4
ppN(m/s)	-12.83	12.69	-0.05	4.16	
ppT(m/s)	-101.3	100.28	-0.42	32.86	
hh/vv(dB)	NaN	72.52	15.23	45.44	1050
vh/hh(dB)	NaN	-20.44	-39.25	-36.90	171.
hv/vv(dB)	NaN	-32.89	-47.37	-43.08	268.
hnjmp(dB)			-0.15		
vnjmp(dB)			-0.16		



CIFEX 2004 Data (cal/250ns+2.5/100ns-3.5/500ns: 53.0,50.0)

W2004-04-18-19-46-38 - PPMAG4, IRIG:1/0/2
 UTC: 19:46:38.65 to 22:40:44.81, Dur: 10446s
 TimeLngth: 10446.66s, TimeInt: 27ms (35.9pps)
 TimeCor=-13.0s, PPS(min,max,med): 35,36,36
 Timeint/DSPdiff(mn,min,mx):27,27,29/27,27,27
 Prof: 630 to 375278, NumProf(r/t): 35142/374648
 ProcTime/Recs: 21:57:17-22:13:37/281136-316277
 ADacqtime: 25ms; DRate: 200.8KB/s; Flags: 1, 0, 0
 Pulse: 275ns, IFilt: 5.0MHz; ppPol: HH HV VV
 TxPol: HHVV, PRF: 20 10 20 10 kHz, NoiseFlg:4,3
 Range: Delay 75m, Spacing 30m, Gates 100
 Ave. Pulses: 84, Rng/Prof Aspect@90m/s: 12.0

	Min	Max	Mean	Std	Varc%
hhN (dB)	-67.56	-63.90	-65.49	-75.48	10.0
vvN (dB)	-67.82	-63.02	-65.52	-75.35	10.4
hhL (dB)	-23.51	2.80	-1.82	-2.48	86.0
vvL (dB)	-12.71	6.00	4.42	1.18	47.4
ppN (m/s)	-12.83	12.69	-0.05	4.16	
ppT (m/s)	-101.3	100.28	-0.42	32.86	
hh/vv (dB)	NaN	72.52	15.23	45.44	1050
vh/hh (dB)	NaN	-20.44	-39.25	-36.90	171.
hv/vv (dB)	NaN	-32.89	-47.37	-43.08	268.
hn_jmp (dB)			-0.15		
vn_jmp (dB)			-0.16		



CIFEX 2004 Data (cal/250ns+2.5/100ns-3.5/500ns: 53.0,50.0)

W2004-04-18-19-46-38 - PPMAG4, IRIG:1/0/2
 UTC: 19:46:38.65 to 22:40:44.81, Dur: 10446s
 TimeLngth: 10446.66s, TimeInt: 27ms (35.9pps)
 TimeCor=-13.0s, PPS(min,max,med): 35,36,36
 Timeint/DSPdiff(mn,min,mx):27,27,29/27,27,27
 Prof: 630 to 375278, NumProf(r/t): 35142/374648
 ProcTime/Recs: 21:57:17-22:13:37/281136-316277
 ADacqtime: 25ms; DRate: 200.8KB/s; Flags: 1, 0, 0
 Pulse: 275ns, IFilt: 5.0MHz; ppPol: HH HV VV
 TxPol: HHVV, PRF: 20 10 20 10 kHz, NoiseFlg:4,3
 Range: Delay 75m, Spacing 30m, Gates 100
 Ave. Pulses: 84, Rng/Prof Aspect@90m/s: 12.0

	Min	Max	Mean	Std	Varc%
hhN (dB)	-67.56	-63.90	-65.49	-75.48	10.0
vvN (dB)	-67.82	-63.02	-65.52	-75.35	10.4
hhL (dB)	-23.51	2.80	-1.82	-2.48	86.0
vvL (dB)	-12.71	6.00	4.42	1.18	47.4
ppN (m/s)	-12.83	12.69	-0.05	4.16	
ppT (m/s)	-101.3	100.28	-0.42	32.86	
hh/vv (dB)	NaN	72.52	15.23	45.44	1050
vh/hh (dB)	NaN	-20.44	-39.25	-36.90	171.
hv/vv (dB)	NaN	-32.89	-47.37	-43.08	268.
hn_jmp (dB)			-0.15		
vn_jmp (dB)			-0.16		