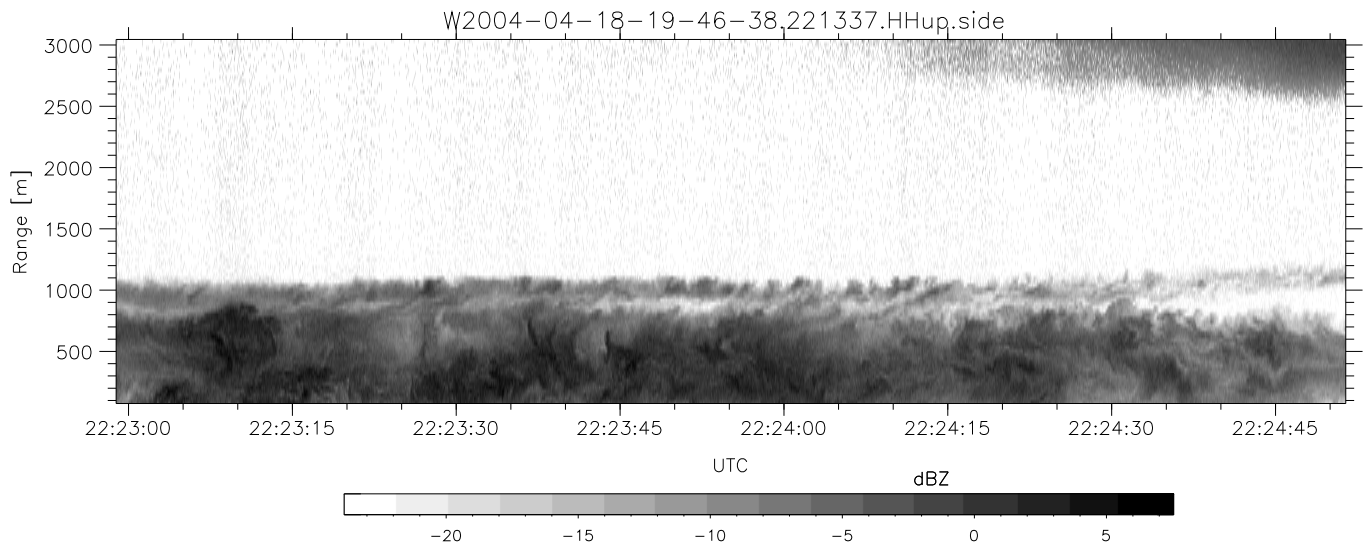
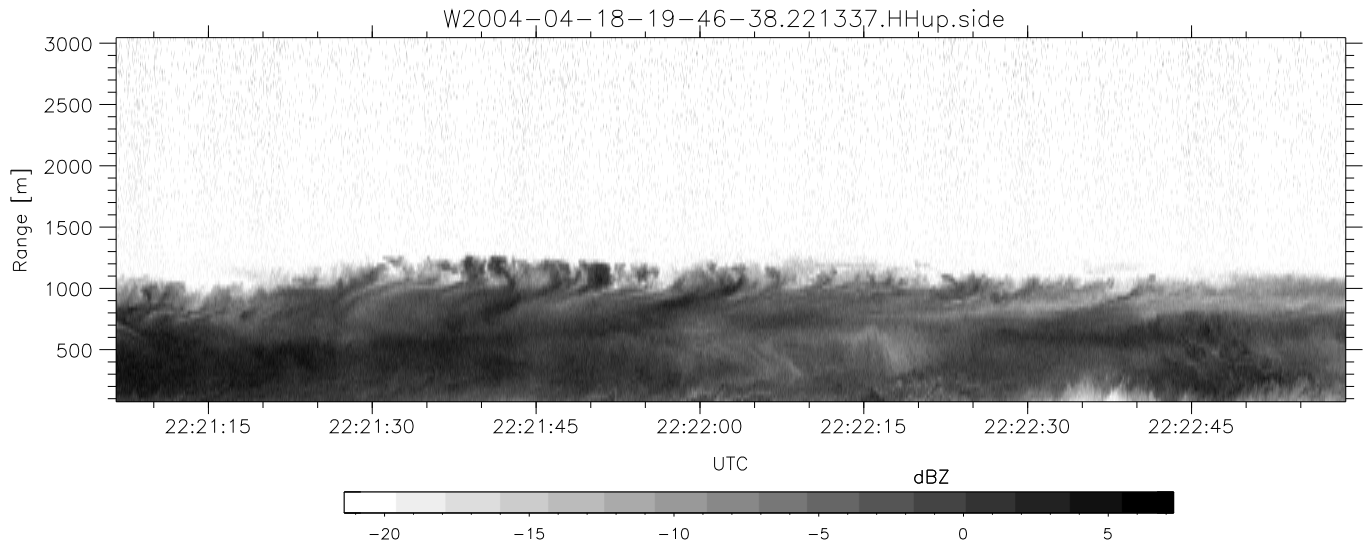
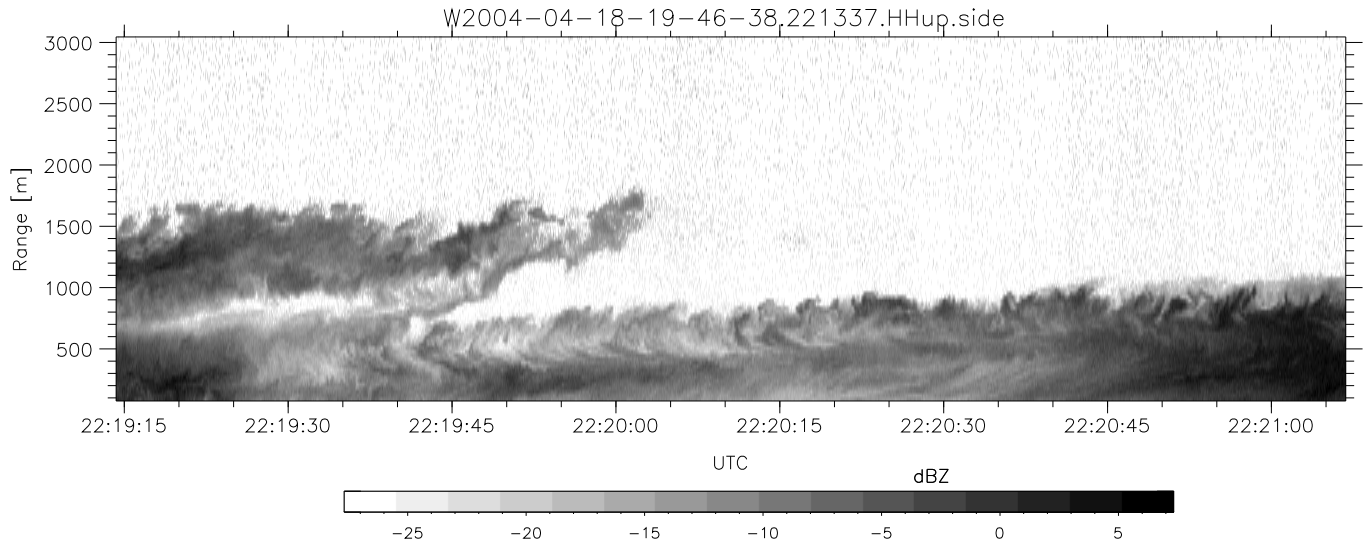


CIFEX 2004 Data (cal/250ns+2.5/100ns-3.5/500ns: 53.0,50.0)

W2004-04-18-19-46-38 - PPMAG4, IRIG:1/0/2
 UTC: 19:46:38.65 to 22:40:44.81, Dur: 10446s
 TimeLngth: 10446.66s, TimeInt: 27ms (35.9pps)
 TimeCor=-13.0s, PPS(min,max,med): 35,36,36
 Timeint/DSPdiff(mn,min,mx):27,27,28/27,27,27
 Prof: 630 to 375278, NumProf(r/t): 35142/374648
 ProcTime/Recs: 22:13:37-22:29:57/316278-351419
 ADacqtime: 25ms; DRate: 200.8KB/s; Flags: 1, 0, 0
 Pulse: 275ns, IFfilt: 5.0MHz; ppPol: HH HV VV
 TxPol: HHVV, PRF: 20 10 20 10 kHz, Noiseflg:4,2
 Range: Delay 75m, Spacing 30m, Gates 100
 Ave. Pulses: 84, Rng/Prof Aspect@90m/s: 12.0

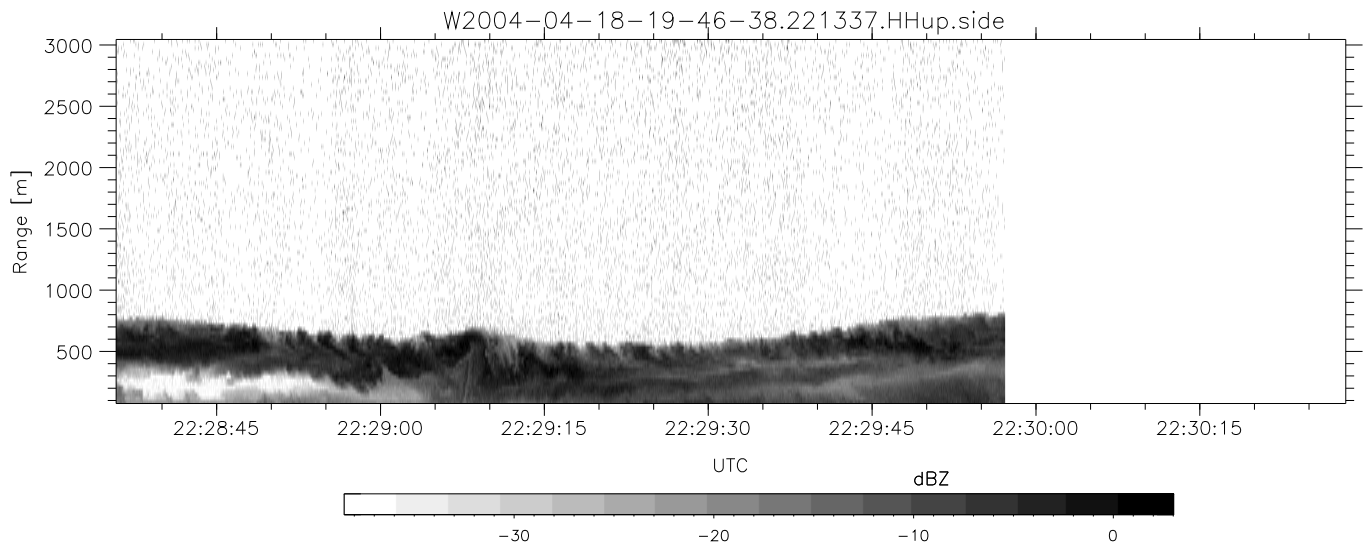
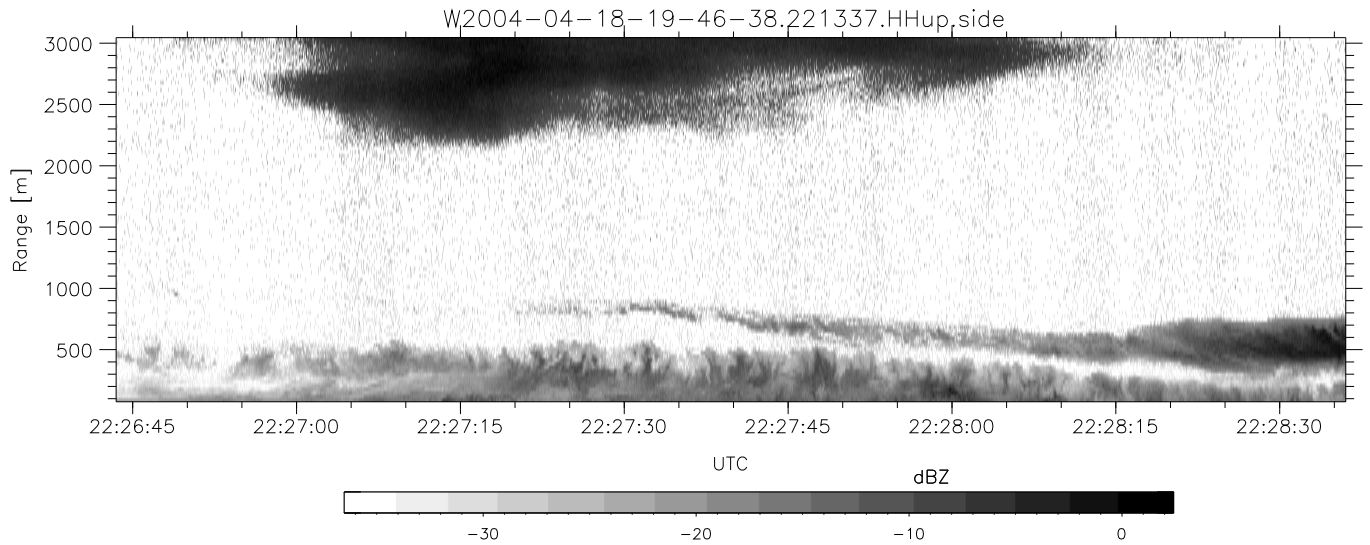
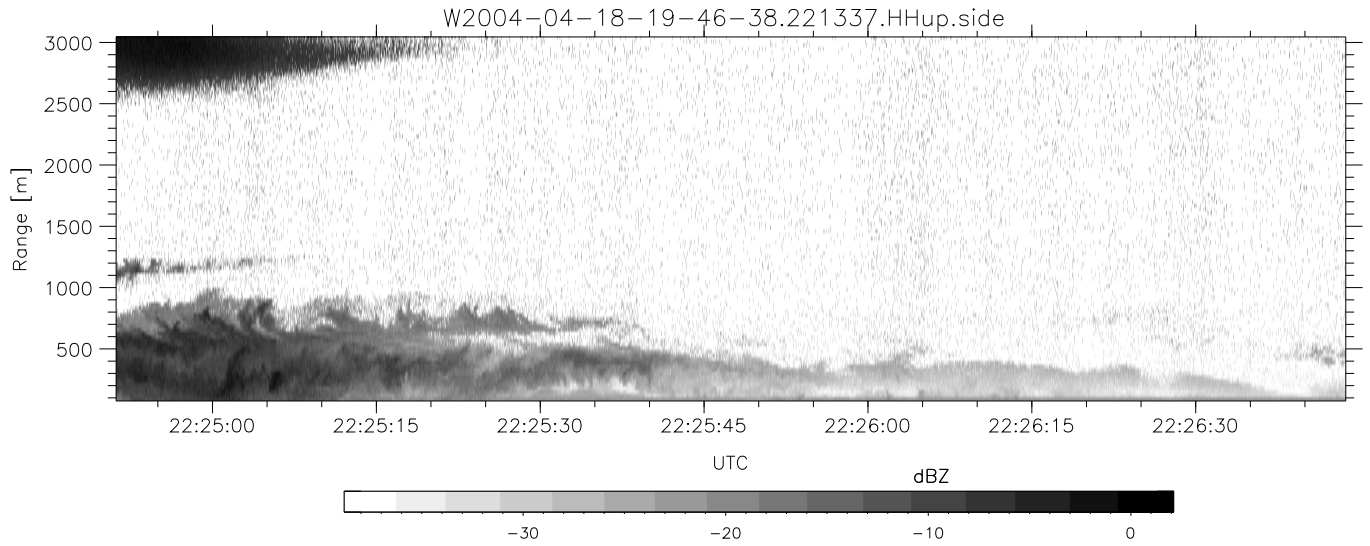
	Min	Max	Mean	Std	Varc%
hhN (dB)	-67.36	-63.82	-65.52	-75.55	9.9
vvN (dB)	-67.41	-63.09	-65.48	-75.07	11.0
hhL (dB)	-0.60	3.24	1.53	-8.10	10.9
vvL (dB)	-3.66	5.91	2.03	-4.35	23.0
ppN (m/s)	-12.90	12.65	-0.10	4.18	
ppT (m/s)	-101.9	99.93	-0.75	33.02	
hh/vv (dB)	NaN	61.03	4.85	31.62	4756
vh/hh (dB)	NaN	-24.51	-37.46	-36.28	131.
hv/vv (dB)	NaN	-33.31	-47.22	-42.86	272.
hn_jmp (dB)			-0.16		
vn_jmp (dB)			-0.15		



CIFEX 2004 Data (cal/250ns+2.5/100ns-3.5/500ns: 53.0,50.0)

W2004-04-18-19-46-38 - PPMAG4, IRIG:1/0/2
 UTC: 19:46:38.65 to 22:40:44.81, Dur: 10446s
 TimeLngth: 10446.66s, TimeInt: 27ms (35.9pps)
 TimeCor=-13.0s, PPS(min,max,med): 35,36,36
 Timeint/DSPdiff(mn,min,mx):27,27,28/27,27,27
 Prof: 630 to 375278, NumProf(r/t): 35142/374648
 ProcTime/Recs: 22:13:37-22:29:57/316278-351419
 ADacqtime: 25ms; DRate: 200.8KB/s; Flags: 1, 0, 0
 Pulse: 275ns, IFilt: 5.0MHz; ppPol: HH HV VV
 TxPol: HHVV, PRF: 20 10 20 10 kHz, NoiseFlg:4,2
 Range: Delay 75m, Spacing 30m, Gates 100
 Ave. Pulses: 84, Rng/Prof Aspect@90m/s: 12.0

	Min	Max	Mean	Std	Varc%
hhN (dB)	-67.36	-63.82	-65.52	-75.55	9.9
vvN (dB)	-67.41	-63.09	-65.48	-75.07	11.0
hhL (dB)	-0.60	3.24	1.53	-8.10	10.9
vvL (dB)	-3.66	5.91	2.03	-4.35	23.0
ppN (m/s)	-12.90	12.65	-0.10	4.18	
ppT (m/s)	-101.9	99.93	-0.75	33.02	
hh/vv (dB)	NaN	61.03	4.85	31.62	4756
vh/hh (dB)	NaN	-24.51	-37.46	-36.28	131.
hv/vv (dB)	NaN	-33.31	-47.22	-42.86	272.
hn_jmp (dB)			-0.16		
vn_jmp (dB)			-0.15		



CIFEX 2004 Data (cal/250ns+2.5/100ns-3.5/500ns: 53.0,50.0)

W2004-04-18-19-46-38 - PPMAG4, IRIG:1/0/2
 UTC: 19:46:38.65 to 22:40:44.81, Dur: 10446s
 TimeLngth: 10446.66s, TimeInt: 27ms (35.9pps)
 TimeCor=-13.0s, PPS(min,max,med): 35,36,36
 Timeint/DSPdiff(mn,min,mx):27,27,28/27,27,27
 Prof: 630 to 375278, NumProf(r/t): 35142/374648
 ProcTime/Recs: 22:13:37-22:29:57/316278-351419
 ADacqtime: 25ms; DRate: 200.8KB/s; Flags: 1, 0, 0
 Pulse: 275ns, IFilt: 5.0MHz; ppPol: HH HV VV
 TxPol: HHVV, PRF: 20 10 20 10 kHz, NoiseFlg:4,2
 Range: Delay 75m, Spacing 30m, Gates 100
 Ave. Pulses: 84, Rng/Prof Aspect@90m/s: 12.0

	Min	Max	Mean	Std	Varc%
hhN (dB)	-67.36	-63.82	-65.52	-75.55	9.9
vvN (dB)	-67.41	-63.09	-65.48	-75.07	11.0
hhL (dB)	-0.60	3.24	1.53	-8.10	10.9
vvL (dB)	-3.66	5.91	2.03	-4.35	23.0
ppN (m/s)	-12.90	12.65	-0.10	4.18	
ppT (m/s)	-101.9	99.93	-0.75	33.02	
hh/vv (dB)	NaN	61.03	4.85	31.62	4756
vh/hh (dB)	NaN	-24.51	-37.46	-36.28	131.
hv/vv (dB)	NaN	-33.31	-47.22	-42.86	272.
hn_jmp (dB)			-0.16		
vn_jmp (dB)			-0.15		