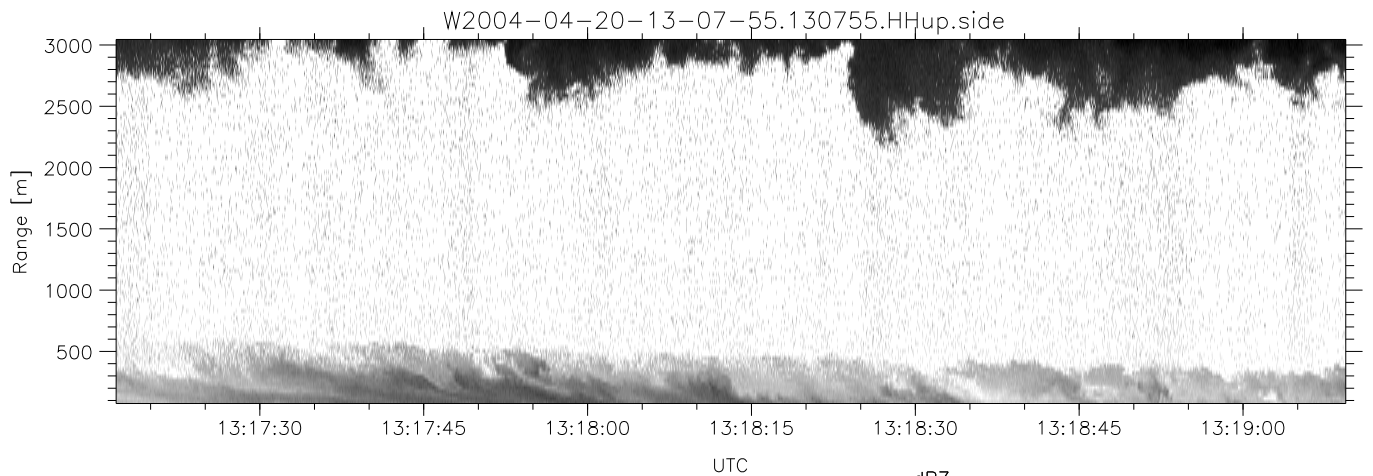
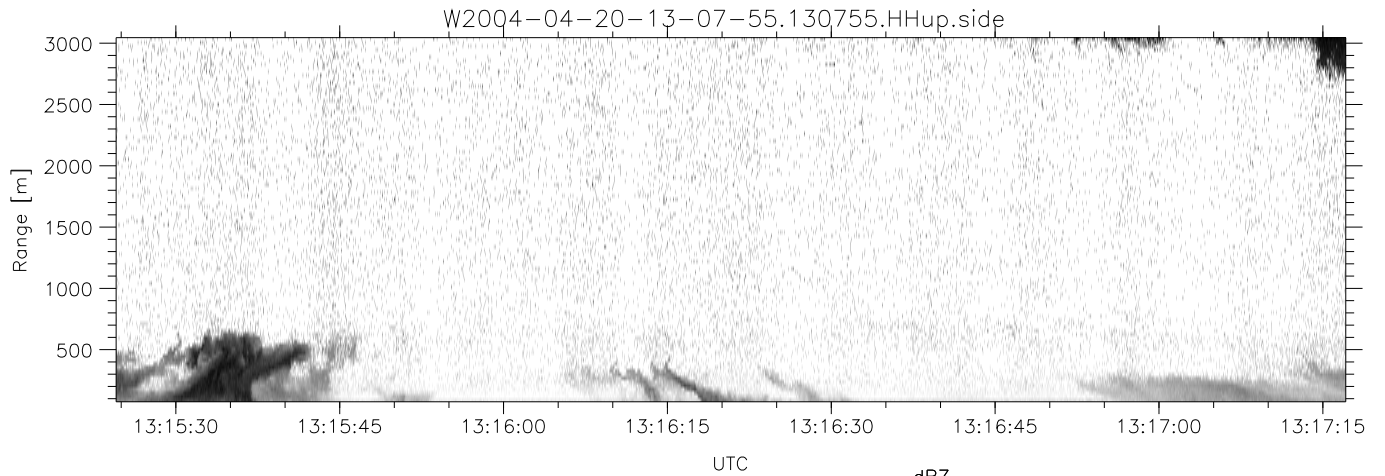
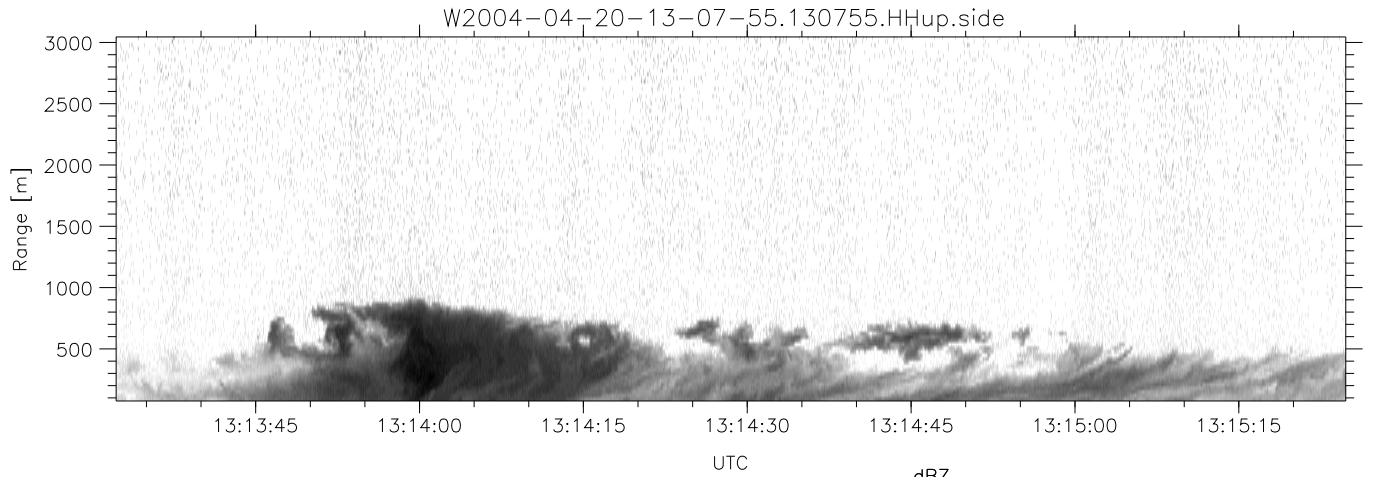


CIFEX 2004 Data (cal/250ns+2.5/100ns-3.5/500ns: 61.0,58.0)

W2004-04-20-13-07-55 - PPMAG4, IRIG:1/0/0  
 UTC: 13:07:55.33 to 14:53:40.51, Dur: 6345s  
 TimeLngth: 6345.16s, TimeInt: 28ms (35.4pps)  
 TimeCor=-13.0s, PPS(min,max,med): 35,36,35  
 Timeint/DSPdiff(mn,min,mx):28,28,28/28,28,28  
 Prof: 254 to 225117, NumProf(r/t): 35142/224863  
 ProcTime/Recs: 13:07:55-13:24:26/0-35141  
 ADacqtime: 25ms; DRate: 198.4KB/s; Flags: 0, 0, 0  
 Pulse: 275ns, IFilt: 5.0MHz; ppPol: HH HV VV  
 TxPol: HHVV, PRF: 20 10 20 10 kHz, NoiseFlg:4,2  
 Range: Delay 75m, Spacing 30m, Gates 100  
 Ave. Pulses: 84, Rng/Prof Aspect@90m/s: 11.8

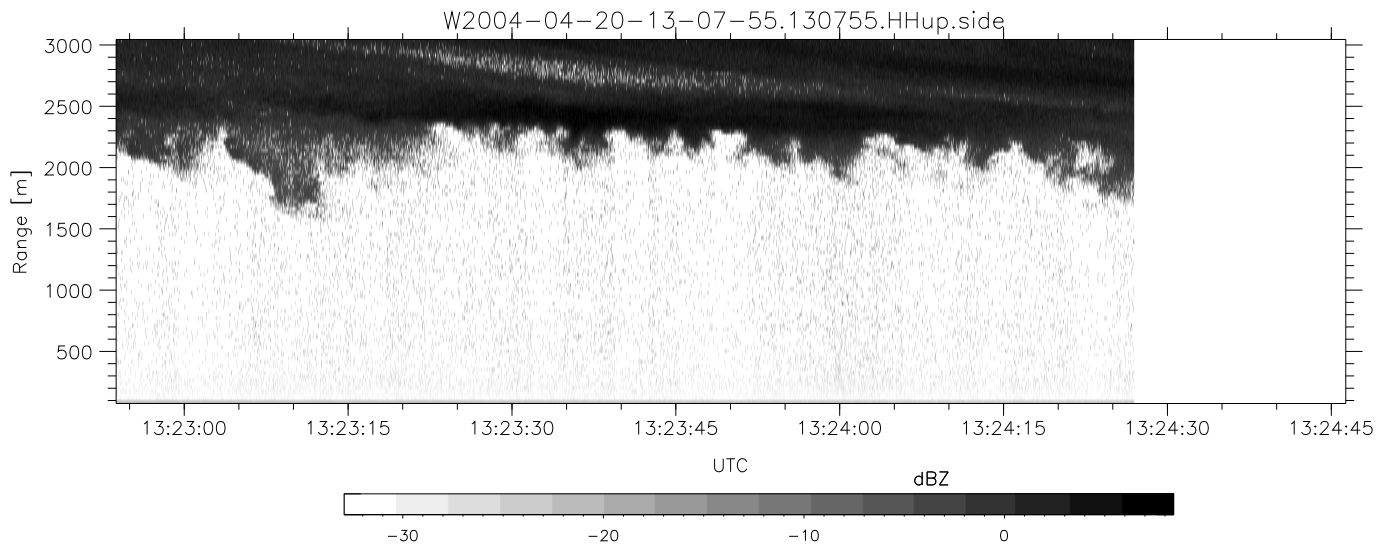
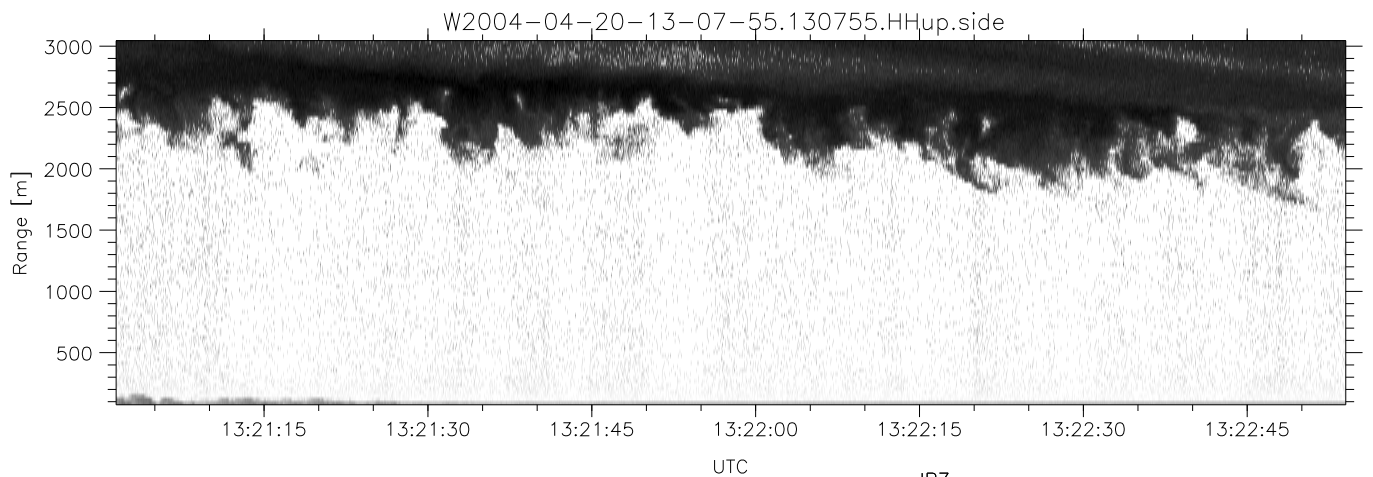
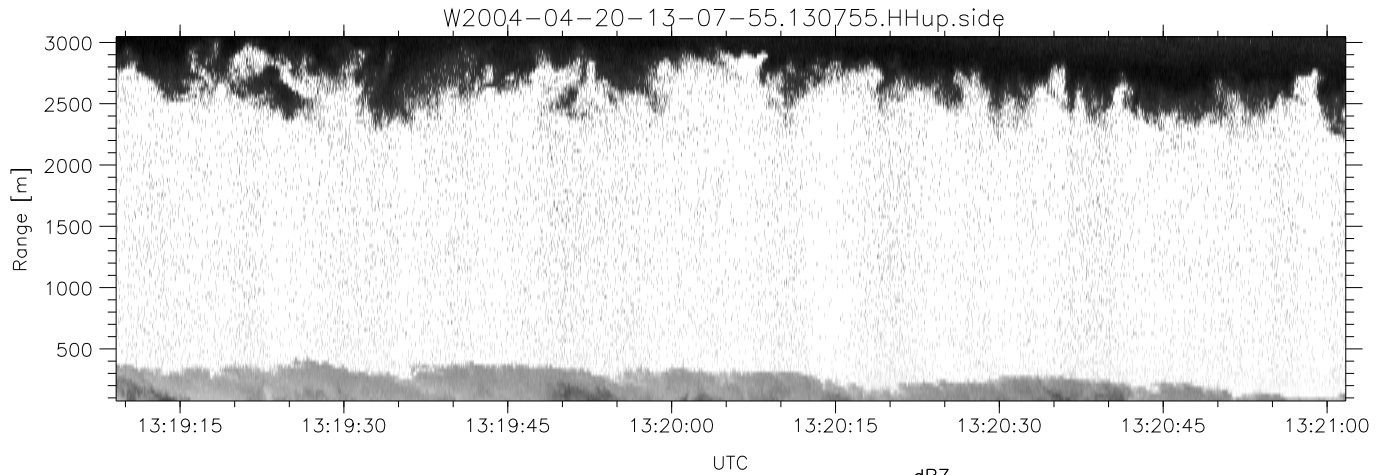
	Min	Max	Mean	Std	Varc%
hhN (dB)	-67.48	-63.44	-65.18	-75.23	9.9
vvN (dB)	-67.00	-62.01	-65.16	-74.44	11.8
hhL (dB)	-25.97	-4.12	-8.45	-10.06	69.1
vvL (dB)	-20.08	2.76	-2.72	-5.45	53.3
ppN (m/s)	-12.40	12.35	-0.12	4.16	
ppT (m/s)	-97.99	97.59	-0.92	32.89	
hh/vv (dB)	NaN	56.80	8.18	34.73	4515
vh/hh (dB)	NaN	-27.98	-37.82	-36.73	128.
hv/vv (dB)	NaN	-33.24	-47.57	-43.16	276.
hnjmp (dB)			-0.15		
vnjmp (dB)			-0.14		



CIFEX 2004 Data (cal/250ns+2.5/100ns-3.5/500ns: 61.0,58.0)

W2004-04-20-13-07-55 - PPMAG4, IRIG:1/0/0  
 UTC: 13:07:55.33 to 14:53:40.51, Dur: 6345s  
 TimeLngth: 6345.16s, TimeInt: 28ms (35.4pps)  
 TimeCor=-13.0s, PPS(min,max,med): 35,36,35  
 Timeint/DSPdiff(mn,min,mx):28,28,28/28,28,28  
 Prof: 254 to 225117, NumProf(r/t): 35142/224863  
 ProcTime/Recs: 13:07:55-13:24:26/0-35141  
 ADacqtime: 25ms; DRate: 198.4KB/s; Flags: 0, 0, 0  
 Pulse: 275ns, IFilt: 5.0MHz; ppPol: HH HV VV  
 TxPol: HHVV, PRF: 20 10 20 10 kHz, NoiseFlg:4,2  
 Range: Delay 75m, Spacing 30m, Gates 100  
 Ave. Pulses: 84, Rng/Prof Aspect@90m/s: 11.8

	Min	Max	Mean	Std	Varc%
hhN (dB)	-67.48	-63.44	-65.18	-75.23	9.9
vvN (dB)	-67.00	-62.01	-65.16	-74.44	11.8
hhL (dB)	-25.97	-4.12	-8.45	-10.06	69.1
vvL (dB)	-20.08	2.76	-2.72	-5.45	53.3
ppN (m/s)	-12.40	12.35	-0.12	4.16	
ppT (m/s)	-97.99	97.59	-0.92	32.89	
hh/vv (dB)	NaN	56.80	8.18	34.73	4515
vh/hh (dB)	NaN	-27.98	-37.82	-36.73	128.
hv/vv (dB)	NaN	-33.24	-47.57	-43.16	276.
hnjmp (dB)			-0.15		
vnjmp (dB)			-0.14		



CIFEX 2004 Data (cal/250ns+2.5/100ns-3.5/500ns: 61.0,58.0)

W2004-04-20-13-07-55 - PPMAG4, IRIG:1/0/0  
 UTC: 13:07:55.33 to 14:53:40.51, Dur: 6345s  
 TimeLngth: 6345.16s, TimeInt: 28ms (35.4pps)  
 TimeCor=-13.0s, PPS(min,max,med): 35,36,35  
 Timeint/DSPdiff(mn,min,mx):28,28,28/28,28,28  
 Prof: 254 to 225117, NumProf(r/t): 35142/224863  
 ProcTime/Recs: 13:07:55-13:24:26/0-35141  
 ADacqtime: 25ms; DRate: 198.4KB/s; Flags: 0, 0, 0  
 Pulse: 275ns, IFfilt: 5.0MHz; ppPol: HH HV VV  
 TxPol: HHVV, PRF: 20 10 20 10 kHz, Noiseflg:4,2  
 Range: Delay 75m, Spacing 30m, Gates 100  
 Ave. Pulses: 84, Rng/Prof Aspect@90m/s: 11.8

	Min	Max	Mean	Std	Varc%
hhN (dB)	-67.48	-63.44	-65.18	-75.23	9.9
vvN (dB)	-67.00	-62.01	-65.16	-74.44	11.8
hhL (dB)	-25.97	-4.12	-8.45	-10.06	69.1
vvL (dB)	-20.08	2.76	-2.72	-5.45	53.3
ppN (m/s)	-12.40	12.35	-0.12	4.16	
ppT (m/s)	-97.99	97.59	-0.92	32.89	
hh/vv (dB)	NaN	56.80	8.18	34.73	4515
vh/hh (dB)	NaN	-27.98	-37.82	-36.73	128.
hv/vv (dB)	NaN	-33.24	-47.57	-43.16	276.
hnjmp (dB)			-0.15		
vnjmp (dB)			-0.14		