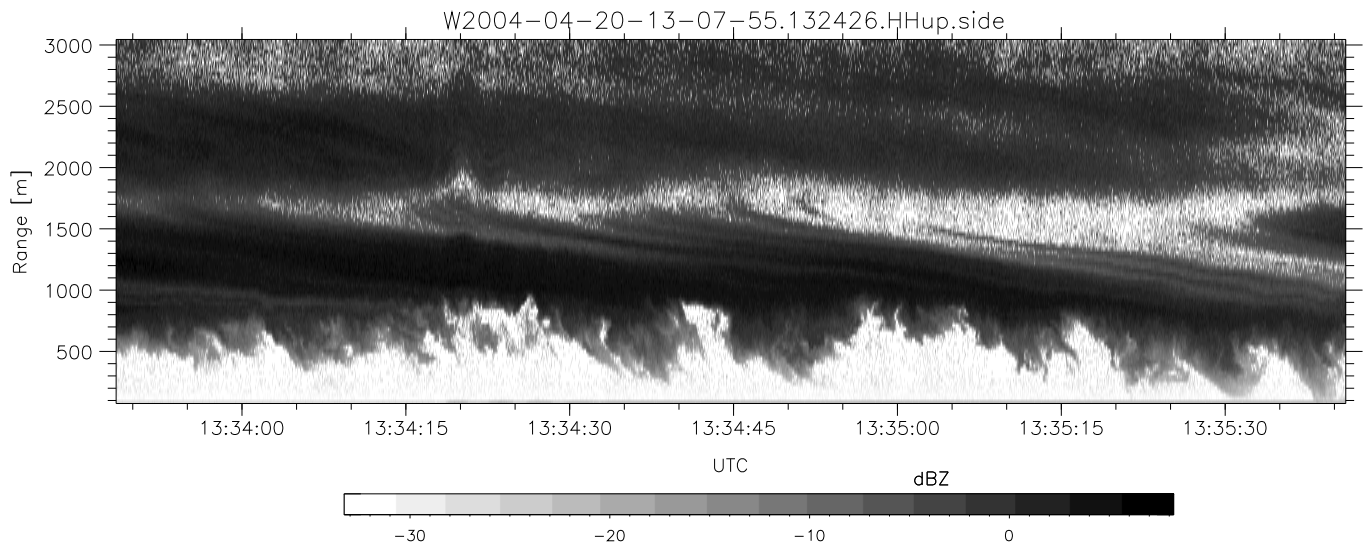
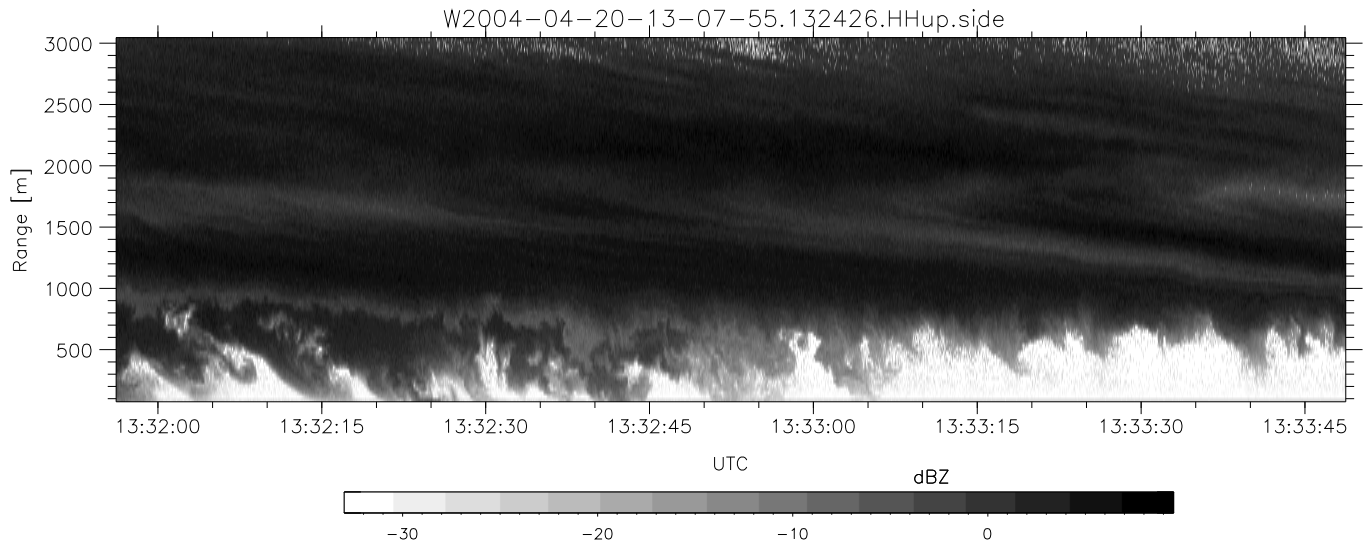
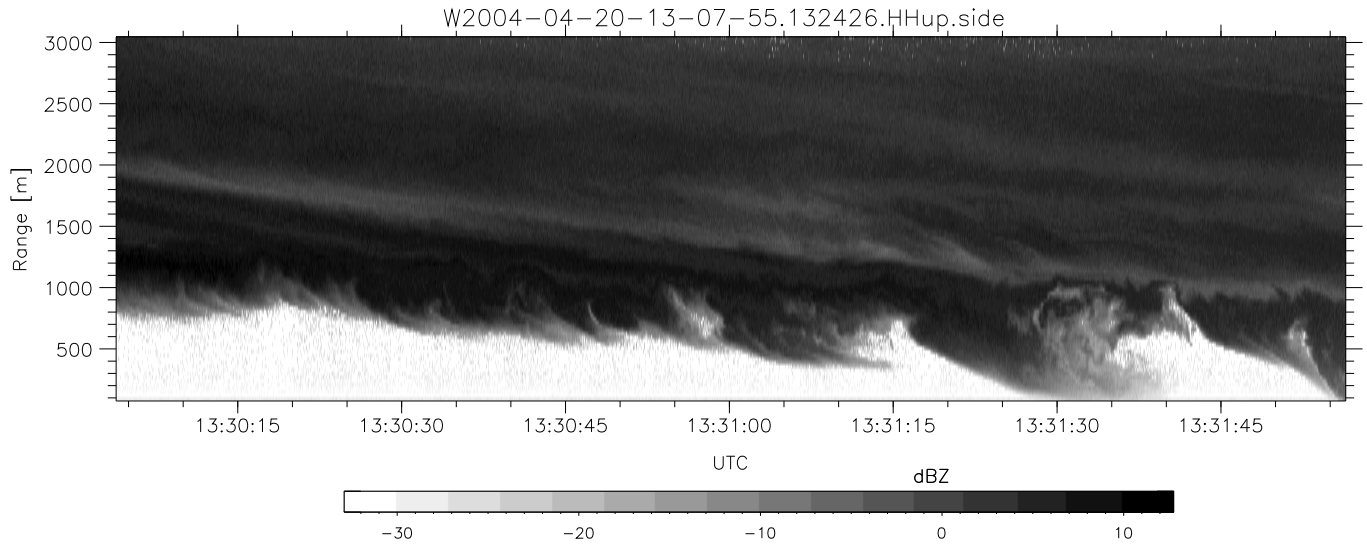


CIFEX 2004 Data (cal/250ns+2.5/100ns-3.5/500ns: 61.0,58.0)

W2004-04-20-13-07-55 - PPMAG4, IRIG:1/0/0
 UTC: 13:07:55.33 to 14:53:40.51, Dur: 6345s
 TimeLngth: 6345.16s, TimeInt: 28ms (35.4pps)
 TimeCor=-13.0s, PPS(min,max,med): 35,36,35
 Timeint/DSPdiff(mn,min,mx):28,28,41/28,28,28
 Prof: 254 to 225117, NumProf(r/t): 35142/224863
 ProcTime/Recs: 13:24:26-13:40:58/35142-70283
 ADacqtime: 25ms; DRate: 198.4KB/s; Flags: 0, 0, 0
 Pulse: 275ns, IFilt: 5.0MHz; ppPol: HH HV VV
 TxPol: HHVV, PRF: 20 10 20 10 kHz, Noiseflg:2,2
 Range: Delay 75m, Spacing 30m, Gates 100
 Ave. Pulses: 84, Rng/Prof Aspect@90m/s: 11.8

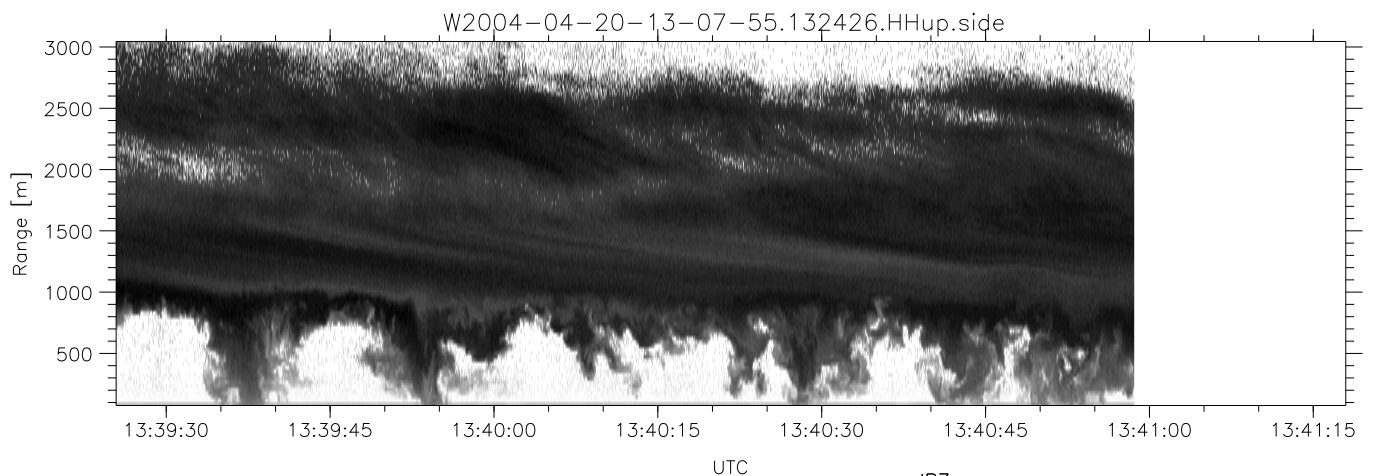
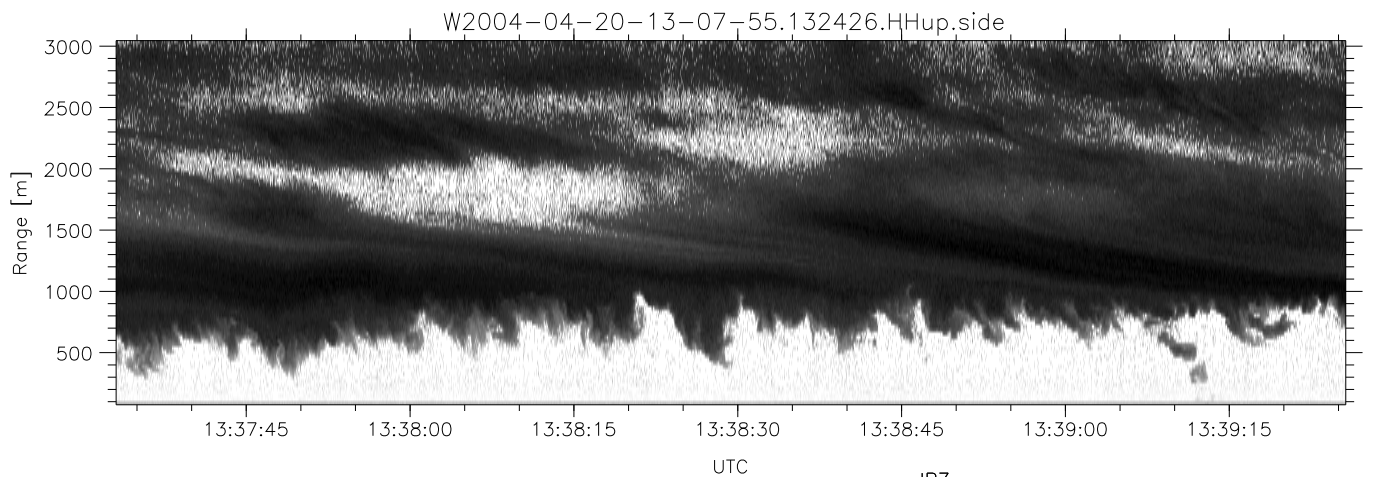
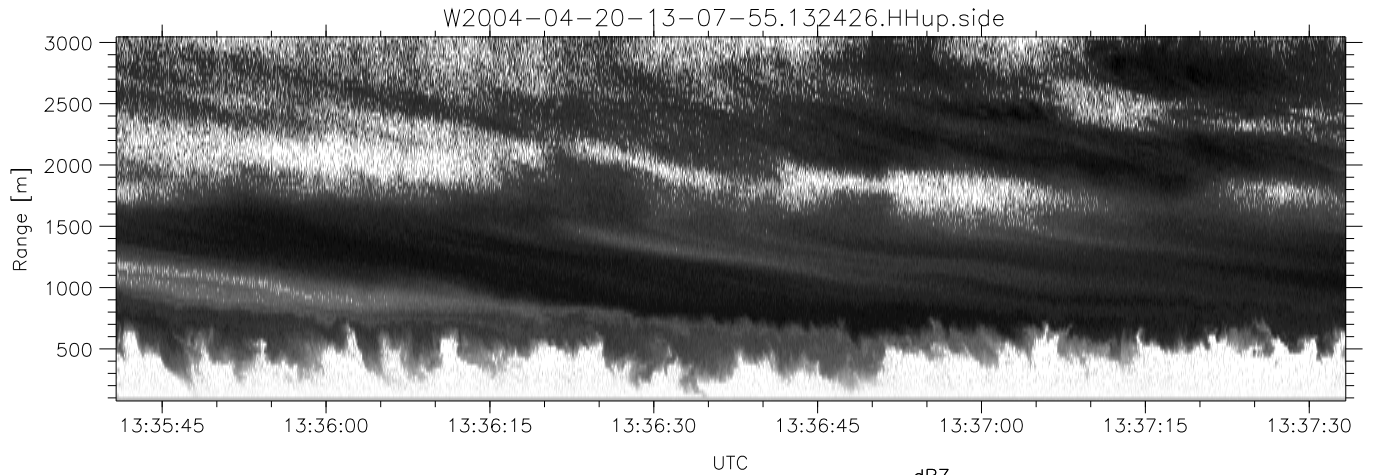
	Min	Max	Mean	Std	Varc%
hhN (dB)	-67.22	-63.67	-65.26	-75.35	9.8
vvN (dB)	-67.09	-63.42	-65.30	-75.28	10.0
hhL (dB)	-12.91	-2.92	-7.45	-10.87	45.4
vvL (dB)	-21.14	-2.58	-7.27	-8.51	75.2
ppN (m/s)	-12.81	12.77	0.00	4.15	
ppT (m/s)	-101.2	100.91	0.02	32.76	
hh/vv (dB)	NaN	76.22	17.61	48.71	1287
vh/hh (dB)	-99	-99	-99	-99	-99
hv/vv (dB)	NaN	-36.61	-57.64	-45.81	1524
hnjmp (dB)			-0.14		
vnjmp (dB)			-0.15		



CIFEX 2004 Data (cal/250ns+2.5/100ns-3.5/500ns: 61.0,58.0)

W2004-04-20-13-07-55 - PPMAG4, IRIG:1/0/0
 UTC: 13:07:55.33 to 14:53:40.51, Dur: 6345s
 TimeLngth: 6345.16s, TimeInt: 28ms (35.4pps)
 TimeCor=-13.0s, PPS(min,max,med): 35,36,35
 Timeint/DSPdiff(mn,min,mx):28,28,41/28,28,28
 Prof: 254 to 225117, NumProf(r/t): 35142/224863
 ProcTime/Recs: 13:24:26-13:40:58/35142-70283
 ADacqtime: 25ms; DRate: 198.4KB/s; Flags: 0, 0, 0
 Pulse: 275ns, IFilt: 5.0MHz; ppPol: HH HV VV
 TxPol: HHVV, PRF: 20 10 20 10 kHz, NoiseFlg:2,2
 Range: Delay 75m, Spacing 30m, Gates 100
 Ave. Pulses: 84, Rng/Prof Aspect@90m/s: 11.8

	Min	Max	Mean	Std	Varc%
hhN (dB)	-67.22	-63.67	-65.26	-75.35	9.8
vvN (dB)	-67.09	-63.42	-65.30	-75.28	10.0
hhL (dB)	-12.91	-2.92	-7.45	-10.87	45.4
vvL (dB)	-21.14	-2.58	-7.27	-8.51	75.2
ppN (m/s)	-12.81	12.77	0.00	4.15	
ppT (m/s)	-101.2	100.91	0.02	32.76	
hh/vv (dB)	NaN	76.22	17.61	48.71	1287
vh/hh (dB)	-99	-99	-99	-99	-99
hv/vv (dB)	NaN	-36.61	-57.64	-45.81	1524
hnjmp (dB)			-0.14		
vnjmp (dB)			-0.15		



CIFEX 2004 Data (cal/250ns+2.5/100ns-3.5/500ns: 61.0,58.0)

W2004-04-20-13-07-55 - PPMAG4, IRIG:1/0/0
 UTC: 13:07:55.33 to 14:53:40.51, Dur: 6345s
 TimeLngth: 6345.16s, TimeInt: 28ms (35.4pps)
 TimeCor=-13.0s, PPS(min,max,med): 35,36,35
 Timeint/DSPdiff(mn,min,mx):28,28,41/28,28,28
 Prof: 254 to 225117, NumProf(r/t): 35142/224863
 ProcTime/Recs: 13:24:26-13:40:58/35142-70283
 ADacqtime: 25ms; DRate: 198.4KB/s; Flags: 0, 0, 0
 Pulse: 275ns, IFilt: 5.0MHz; ppPol: HH HV VV
 TxPol: HHVV, PRF: 20 10 20 10 kHz, NoiseFlg:2,2
 Range: Delay 75m, Spacing 30m, Gates 100
 Ave. Pulses: 84, Rng/Prof Aspect@90m/s: 11.8

	Min	Max	Mean	Std	Varc%
hhN(dB)	-67.22	-63.67	-65.26	-75.35	9.8
vvN(dB)	-67.09	-63.42	-65.30	-75.28	10.0
hhL(dB)	-12.91	-2.92	-7.45	-10.87	45.4
vvL(dB)	-21.14	-2.58	-7.27	-8.51	75.2
ppN(m/s)	-12.81	12.77	0.00	4.15	
ppT(m/s)	-101.2	100.91	0.02	32.76	
hh/vv(dB)	NaN	76.22	17.61	48.71	1287
vh/hh(dB)	-99	-99	-99	-99	-99
hv/vv(dB)	NaN	-36.61	-57.64	-45.81	1524
hnjmp(dB)			-0.14		
vnjmp(dB)			-0.15		