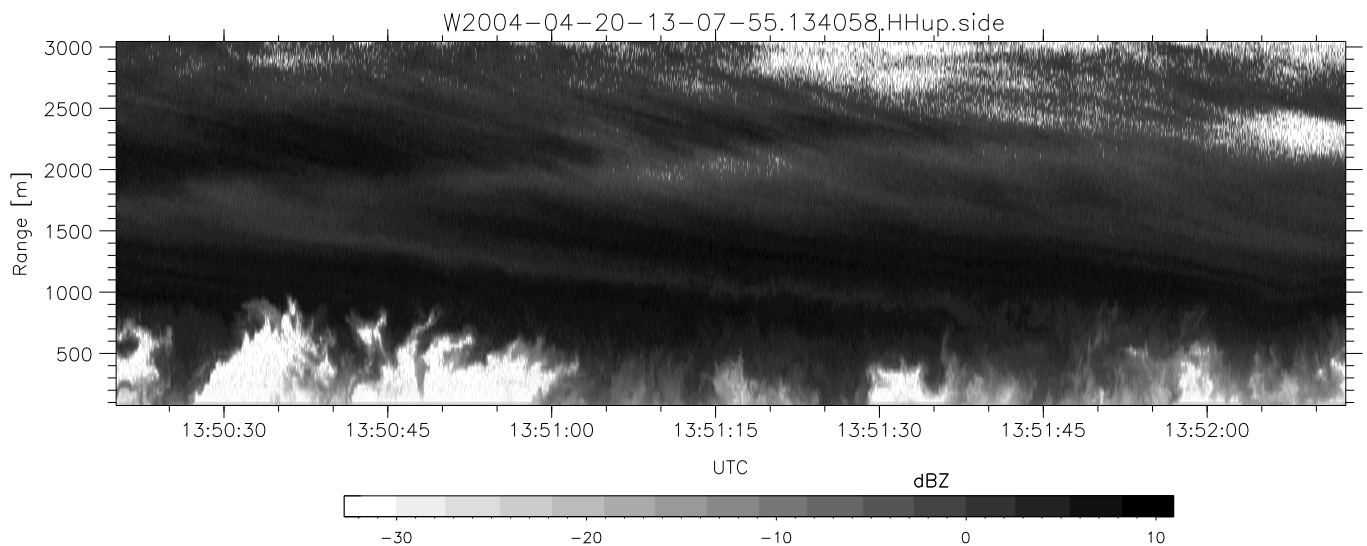
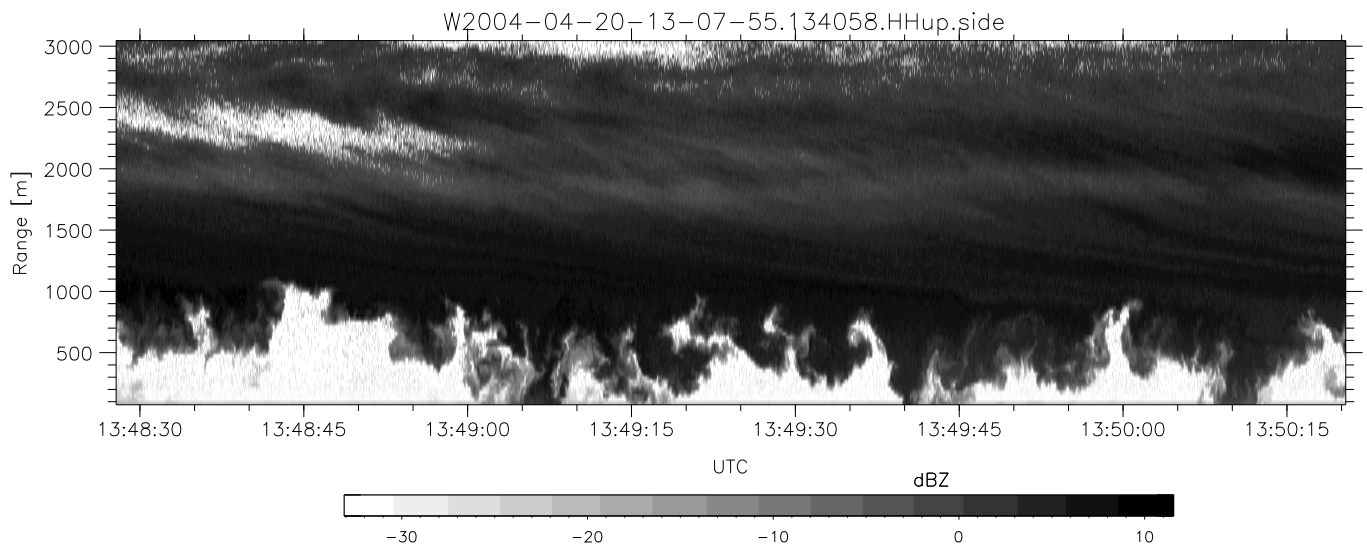
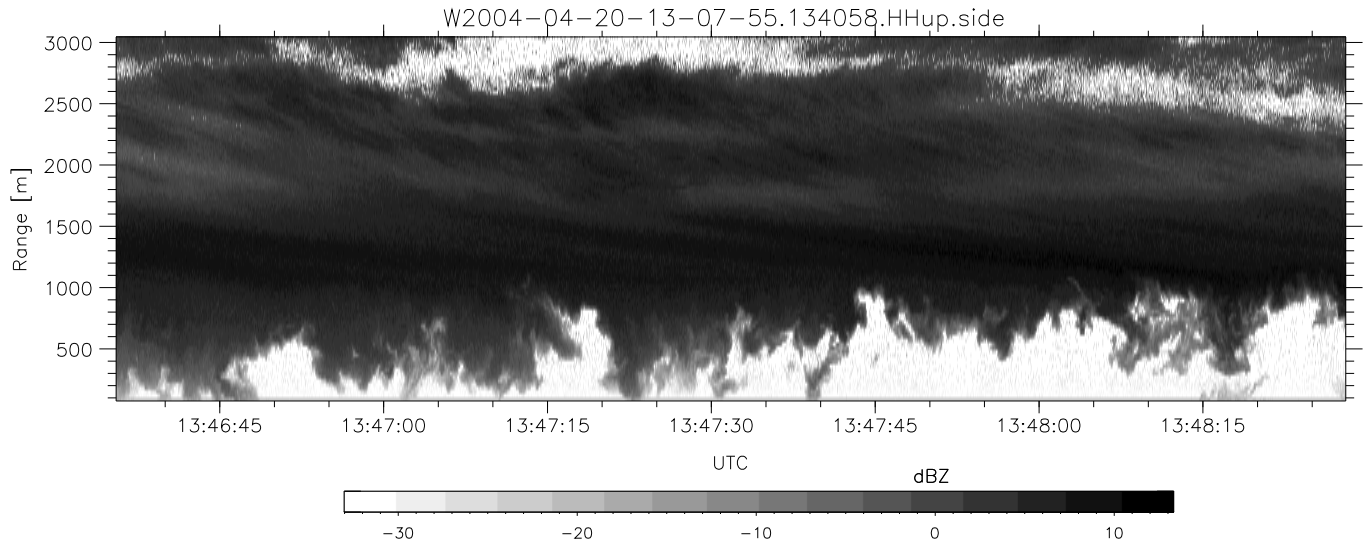


CIFEX 2004 Data (cal/250ns+2.5/100ns-3.5/500ns: 61.0,58.0)

W2004-04-20-13-07-55 - PPMAG4, IRIG:1/0/0  
 UTC: 13:07:55.33 to 14:53:40.51, Dur: 6345s  
 TimeLngth: 6345.16s, TimeInt: 28ms (35.4pps)  
 TimeCor=-13.0s, PPS(min,max,med): 35,36,35  
 Timeint/DSPdiff(mn,min,mx):28,28,31/28,28,28  
 Prof: 254 to 225117, NumProf(r/t): 35142/224863  
 ProcTime/Recs: 13:40:58-13:57:30/70284-105425  
 ADacqtime: 25ms; DRate: 198.4KB/s; Flags: 0, 0, 0  
 Pulse: 275ns, IFilt: 5.0MHz; ppPol: HH HV VV  
 TxPol: HHVV, PRF: 20 10 20 10 kHz, Noiseflg:2,2  
 Range: Delay 75m, Spacing 30m, Gates 100  
 Ave. Pulses: 84, Rng/Prof Aspect@90m/s: 11.8

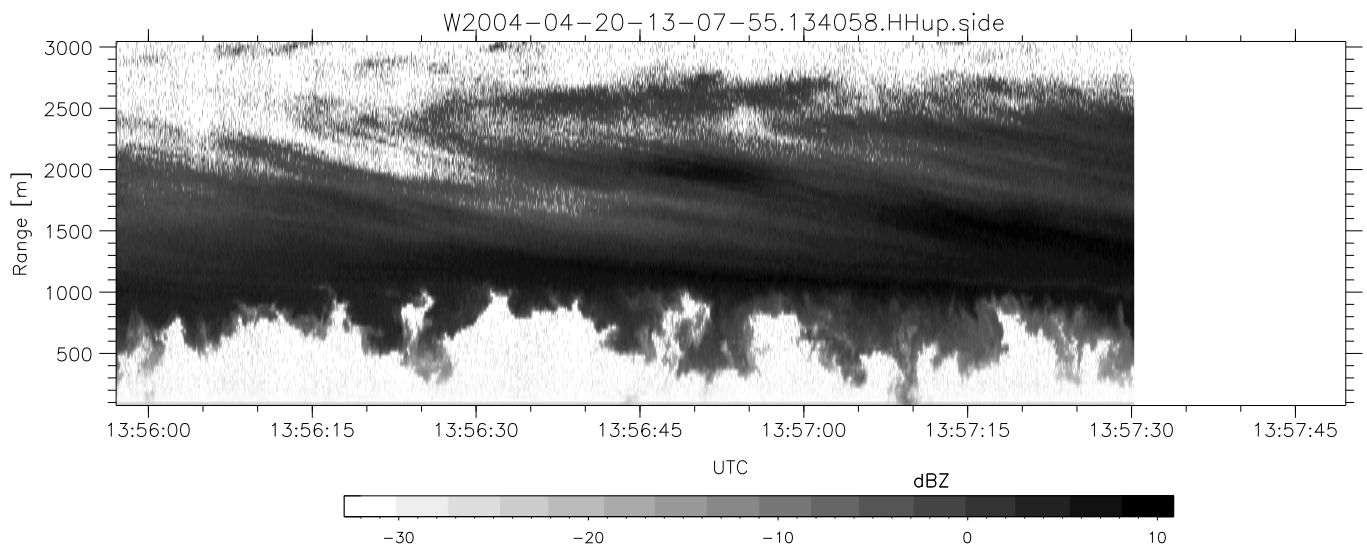
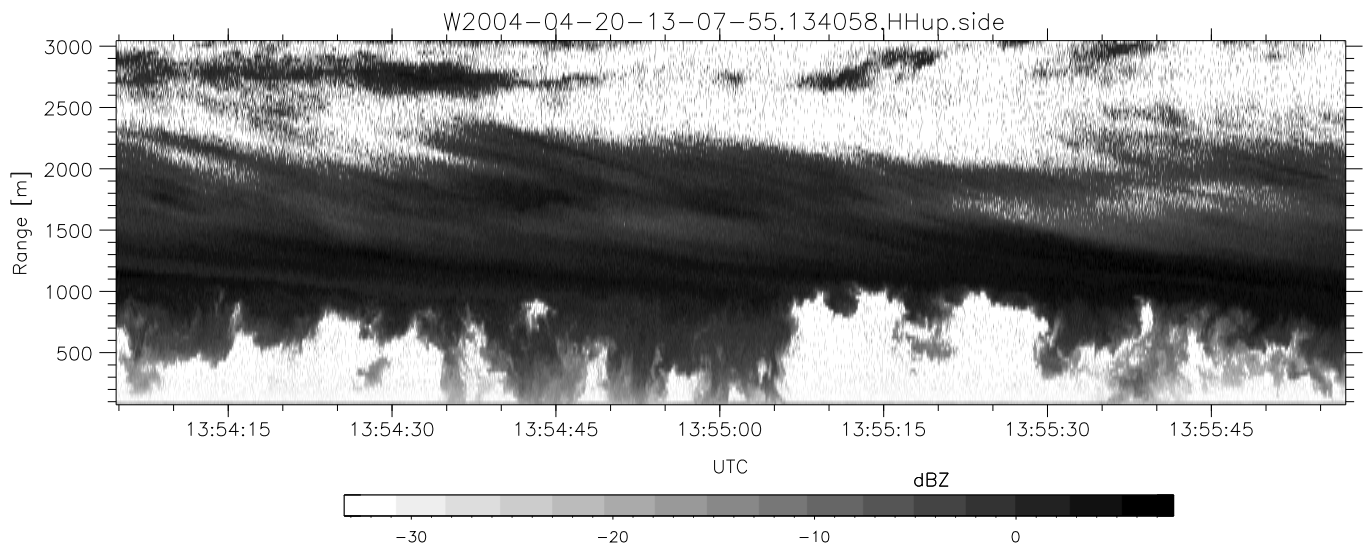
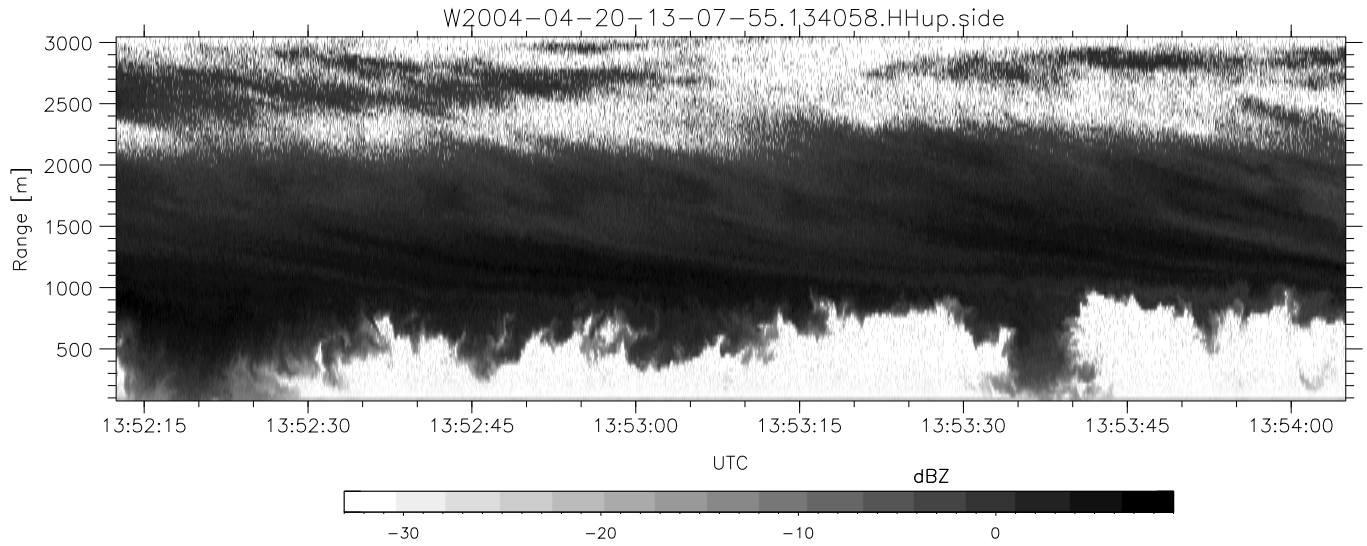
	Min	Max	Mean	Std	Varc%
hhN (dB)	-67.09	-63.74	-65.28	-75.38	9.8
vvN (dB)	-67.24	-63.44	-65.40	-75.40	10.0
hhL (dB)	-9.37	-4.20	-6.31	-15.34	12.5
vvL (dB)	-22.36	-3.84	-9.88	-10.85	79.9
ppN (m/s)	-12.37	12.50	-0.03	4.16	
ppT (m/s)	-97.71	98.72	-0.27	32.88	
hh/vv (dB)	NaN	Inf	Inf	-NaN	-NaN
vh/hh (dB)	NaN	-30.26	-35.60	-35.88	93.7
hv/vv (dB)	-99	-99	-99	-99	-99
hnjmp (dB)			-0.15		
vnjmp (dB)			-0.15		



CIFEX 2004 Data (cal/250ns+2.5/100ns-3.5/500ns: 61.0,58.0)

W2004-04-20-13-07-55 - PPMAG4, IRIG:1/0/0  
 UTC: 13:07:55.33 to 14:53:40.51, Dur: 6345s  
 TimeLngth: 6345.16s, TimeInt: 28ms (35.4pps)  
 TimeCor=-13.0s, PPS(min,max,med): 35,36,35  
 Timeint/DSPdiff(mn,min,mx):28,28,31/28,28,28  
 Prof: 254 to 225117, NumProf(r/t): 35142/224863  
 ProcTime/Recs: 13:40:58-13:57:30/70284-105425  
 ADacqtime: 25ms; DRate: 198.4KB/s; Flags: 0, 0, 0  
 Pulse: 275ns, IFilt: 5.0MHz; ppPol: HH HV VV  
 TxPol: HHVV, PRF: 20 10 20 10 kHz, Noiseflg:2,2  
 Range: Delay 75m, Spacing 30m, Gates 100  
 Ave. Pulses: 84, Rng/Prof Aspect@90m/s: 11.8

	Min	Max	Mean	Std	Varc%
hhN (dB)	-67.09	-63.74	-65.28	-75.38	9.8
vvN (dB)	-67.24	-63.44	-65.40	-75.40	10.0
hhL (dB)	-9.37	-4.20	-6.31	-15.34	12.5
vvL (dB)	-22.36	-3.84	-9.88	-10.85	79.9
ppN (m/s)	-12.37	12.50	-0.03	4.16	
ppT (m/s)	-97.71	98.72	-0.27	32.88	
hh/vv (dB)	NaN	Inf	Inf	-NaN	-NaN
vh/hh (dB)	NaN	-30.26	-35.60	-35.88	93.7
hv/vv (dB)	-99	-99	-99	-99	-99
hnjmp (dB)			-0.15		
vnjmp (dB)			-0.15		



CIFEX 2004 Data (cal/250ns+2.5/100ns-3.5/500ns: 61.0,58.0)

W2004-04-20-13-07-55 - PPMAG4, IRIG:1/0/0  
 UTC: 13:07:55.33 to 14:53:40.51, Dur: 6345s  
 TimeLngth: 6345.16s, TimeInt: 28ms (35.4pps)  
 TimeCor=-13.0s, PPS(min,max,med): 35,36,35  
 Timeint/DSPdiff(mn,min,mx):28,28,31/28,28,28  
 Prof: 254 to 225117, NumProf(r/t): 35142/224863  
 ProcTime/Recs: 13:40:58-13:57:30/70284-105425  
 ADacqtime: 25ms; DRate: 198.4KB/s; Flags: 0, 0, 0  
 Pulse: 275ns, IFilt: 5.0MHz; ppPol: HH HV VV  
 TxPol: HHVV, PRF: 20 10 20 10 kHz, NoiseFlg:2,2  
 Range: Delay 75m, Spacing 30m, Gates 100  
 Ave. Pulses: 84, Rng/Prof Aspect@90m/s: 11.8

	Min	Max	Mean	Std	Varc%
hhN (dB)	-67.09	-63.74	-65.28	-75.38	9.8
vvN (dB)	-67.24	-63.44	-65.40	-75.40	10.0
hhL (dB)	-9.37	-4.20	-6.31	-15.34	12.5
vvL (dB)	-22.36	-3.84	-9.88	-10.85	79.9
ppN (m/s)	-12.37	12.50	-0.03	4.16	
ppT (m/s)	-97.71	98.72	-0.27	32.88	
hh/vv (dB)	NaN	Inf	Inf	-NaN	-NaN
vh/hh (dB)	NaN	-30.26	-35.60	-35.88	93.7
hv/vv (dB)	-99	-99	-99	-99	-99
hnjmp (dB)			-0.15		
vnjmp (dB)			-0.15		