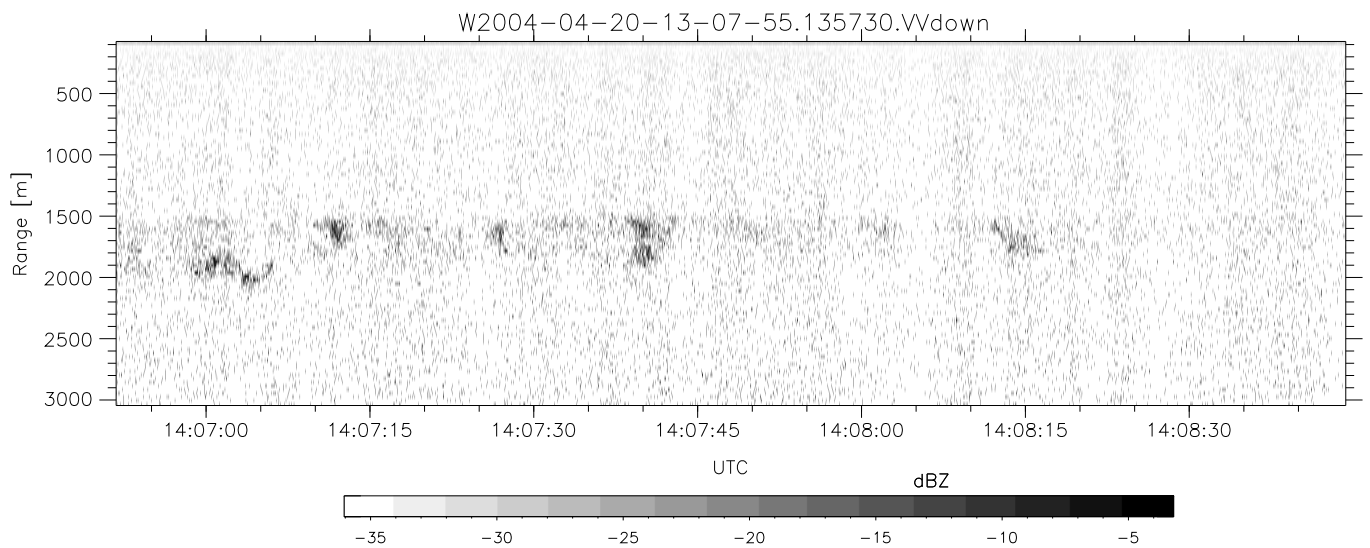
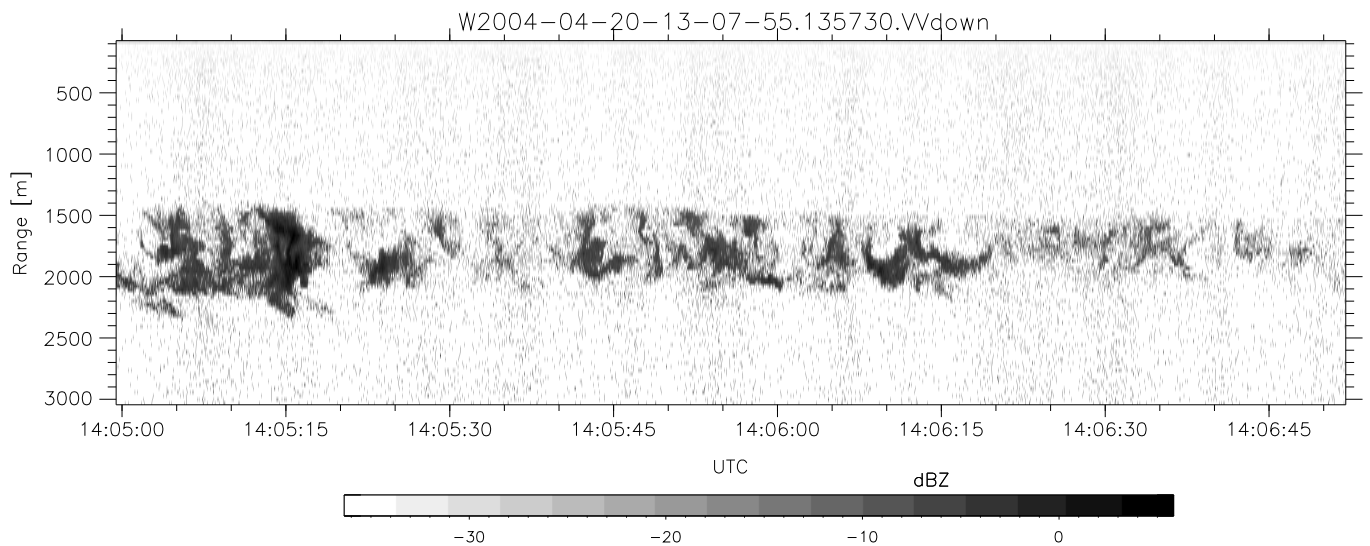
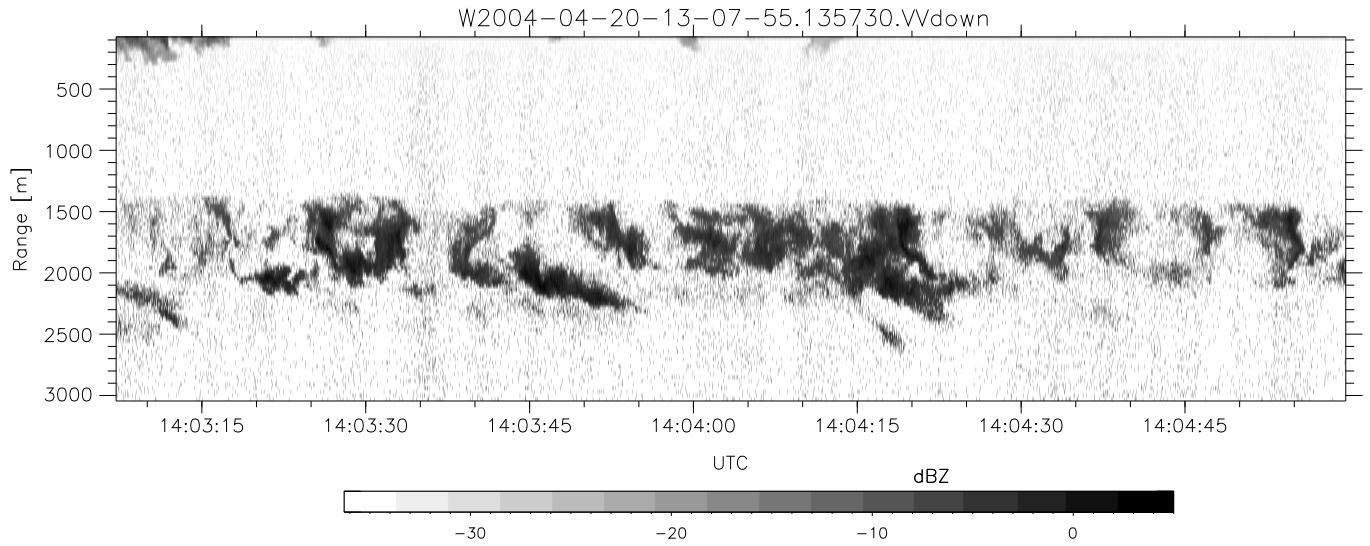


CIFEX 2004 Data (cal/250ns+2.5/100ns-3.5/500ns: 61.0,58.0)

W2004-04-20-13-07-55 - PPMAG4, IRIG:1/0/0
 UTC: 13:07:55.33 to 14:53:40.51, Dur: 6345s
 TimeLngth: 6345.16s, TimeInt: 28ms (35.4pps)
 TimeCor=-13.0s, PPS(min,max,med): 35,36,35
 Timeint/DSPdiff(mn,min,mx):28,28,38/28,28,30
 Prof: 254 to 225117, NumProf(r/t): 35142/224863
 ProcTime/Recs: 13:57:30-14:14:01/105426-140567
 ADacqtime: 25ms; DRate: 198.4KB/s; Flags: 0, 0, 0
 Pulse: 275ns, IFfilt: 5.0MHz; ppPol: HH HV VV
 TxPol: HHVV, PRF: 20 10 20 10 kHz, Noiseflg:4,4
 Range: Delay 75m, Spacing 30m, Gates 100
 Ave. Pulses: 84, Rng/Prof Aspect@90m/s: 11.8

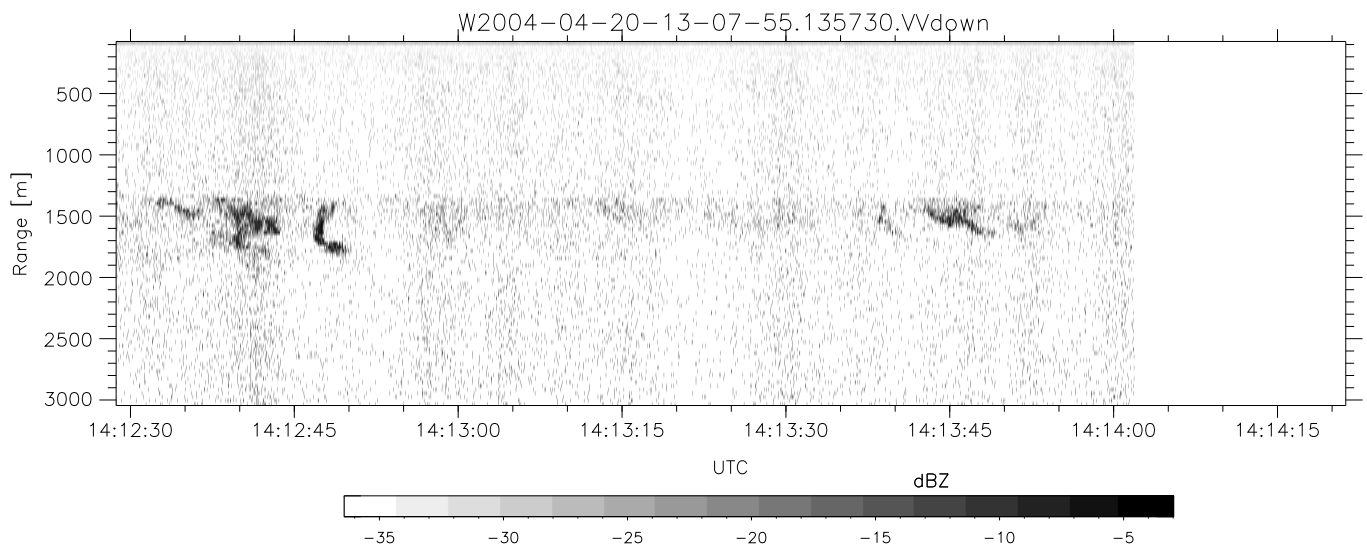
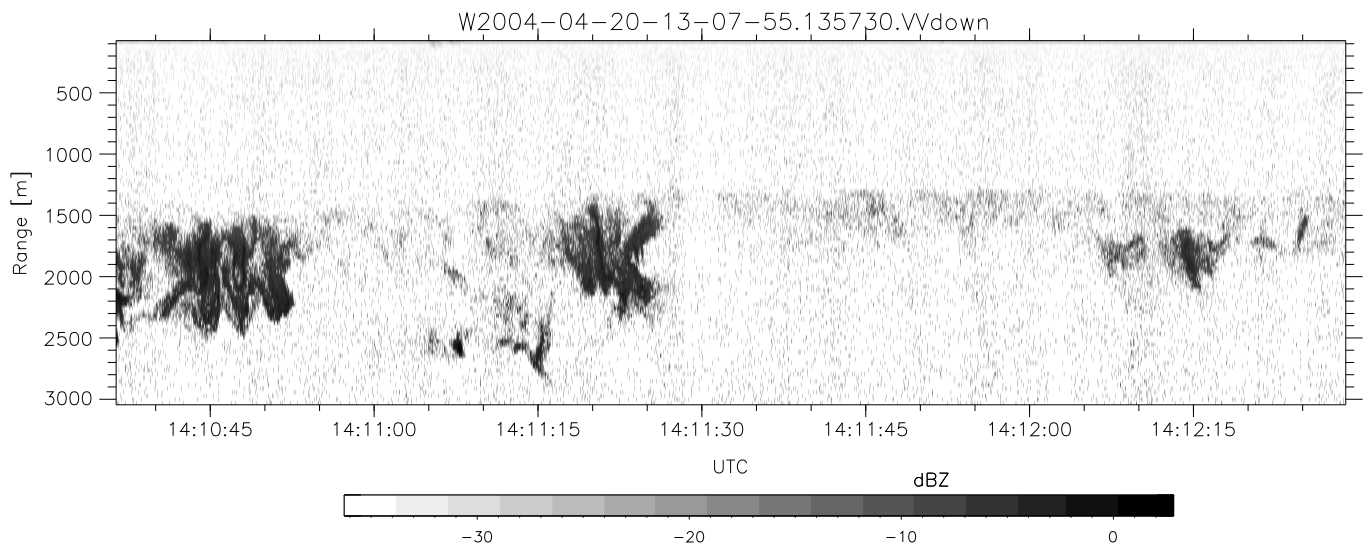
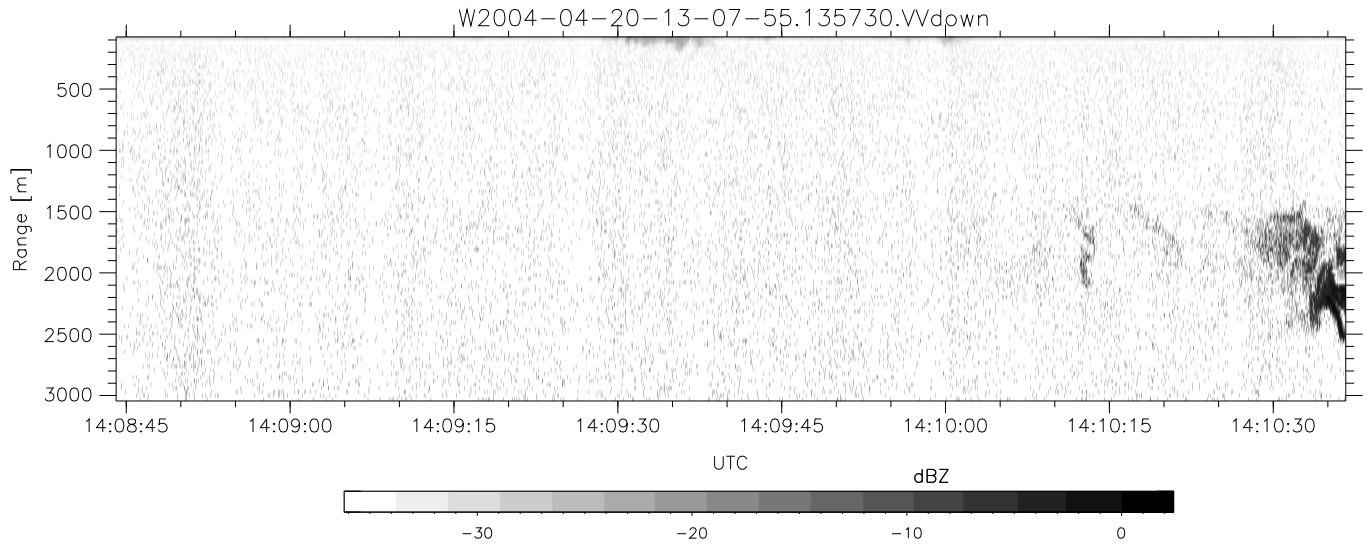
	Min	Max	Mean	Std	Varc%
hhN (dB)	-67.35	-63.57	-65.34	-75.43	9.8
vvN (dB)	-67.31	-63.79	-65.46	-75.50	9.9
hhL (dB)	-10.06	-4.92	-6.64	-15.80	12.1
vvL (dB)	-11.59	-1.72	-5.58	-10.46	32.5
ppN (m/s)	-12.35	12.41	-0.03	4.14	
ppT (m/s)	-97.56	98.06	-0.25	32.74	
hh/vv (dB)	NaN	73.83	22.98	48.12	3267
vh/hh (dB)	NaN	-29.06	-35.61	-34.36	133.
hv/vv (dB)	-99	-99	-99	-99	-99
hnjmp (dB)			-0.15		
vnjmp (dB)			-0.14		



CIFEX 2004 Data (cal/250ns+2.5/100ns-3.5/500ns: 61.0,58.0)

W2004-04-20-13-07-55 - PPMAG4, IRIG:1/0/0
 UTC: 13:07:55.33 to 14:53:40.51, Dur: 6345s
 TimeLngth: 6345.16s, TimeInt: 28ms (35.4pps)
 TimeCor=-13.0s, PPS(min,max,med): 35,36,35
 Timeint/DSPdiff(mn,min,mx):28,28,38/28,28,30
 Prof: 254 to 225117, NumProf(r/t): 35142/224863
 ProcTime/Recs: 13:57:30-14:14:01/105426-140567
 ADacqtime: 25ms; DRate: 198.4KB/s; Flags: 0, 0, 0
 Pulse: 275ns, IFilt: 5.0MHz; ppPol: HH HV VV
 TxPol: HHVV, PRF: 20 10 20 10 kHz, NoiseFlg:4,4
 Range: Delay 75m, Spacing 30m, Gates 100
 Ave. Pulses: 84, Rng/Prof Aspect@90m/s: 11.8

	Min	Max	Mean	Std	Varc%
hhN (dB)	-67.35	-63.57	-65.34	-75.43	9.8
vvN (dB)	-67.31	-63.79	-65.46	-75.50	9.9
hhL (dB)	-10.06	-4.92	-6.64	-15.80	12.1
vvL (dB)	-11.59	-1.72	-5.58	-10.46	32.5
ppN (m/s)	-12.35	12.41	-0.03	4.14	
ppT (m/s)	-97.56	98.06	-0.25	32.74	
hh/vv (dB)	NaN	73.83	22.98	48.12	3267
vh/hh (dB)	NaN	-29.06	-35.61	-34.36	133.
hv/vv (dB)	-99	-99	-99	-99	-99
hnjmp (dB)			-0.15		
vnjmp (dB)			-0.14		



CIFEX 2004 Data (cal/250ns+2.5/100ns-3.5/500ns: 61.0,58.0)

W2004-04-20-13-07-55 - PPMAG4, IRIG:1/0/0
 UTC: 13:07:55.33 to 14:53:40.51, Dur: 6345s
 TimeLngth: 6345.16s, TimeInt: 28ms (35.4pps)
 TimeCor=-13.0s, PPS(min,max,med): 35,36,35
 Timeint/DSPdiff(mn,min,mx):28,28,38/28,28,30
 Prof: 254 to 225117, NumProf(r/t): 35142/224863
 ProcTime/Recs: 13:57:30-14:14:01/105426-140567
 ADacqtime: 25ms; DRate: 198.4KB/s; Flags: 0, 0, 0
 Pulse: 275ns, IFilt: 5.0MHz; ppPol: HH HV VV
 TxPol: HHVV, PRF: 20 10 20 10 kHz, NoiseFlg:4,4
 Range: Delay 75m, Spacing 30m, Gates 100
 Ave. Pulses: 84, Rng/Prof Aspect@90m/s: 11.8

	Min	Max	Mean	Std	Varc%
hhN (dB)	-67.35	-63.57	-65.34	-75.43	9.8
vvN (dB)	-67.31	-63.79	-65.46	-75.50	9.9
hhL (dB)	-10.06	-4.92	-6.64	-15.80	12.1
vvL (dB)	-11.59	-1.72	-5.58	-10.46	32.5
ppN (m/s)	-12.35	12.41	-0.03	4.14	
ppT (m/s)	-97.56	98.06	-0.25	32.74	
hh/vv (dB)	NaN	73.83	22.98	48.12	3267
vh/hh (dB)	NaN	-29.06	-35.61	-34.36	133.
hv/vv (dB)	-99	-99	-99	-99	-99
hnjmp (dB)			-0.15		
vnjmp (dB)			-0.14		