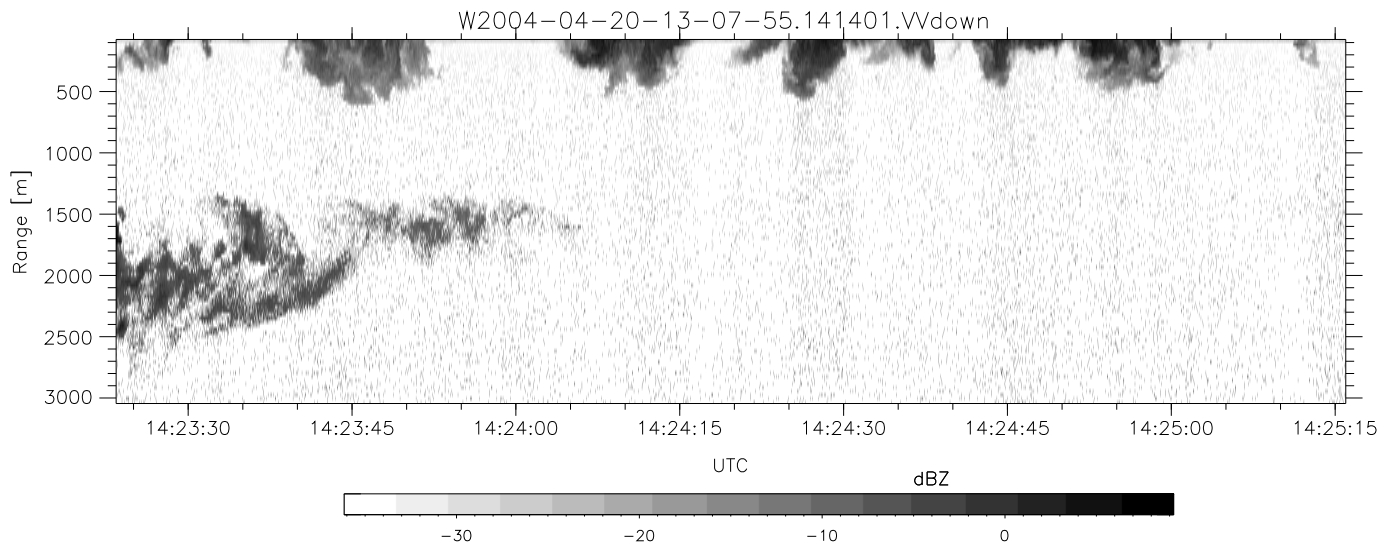
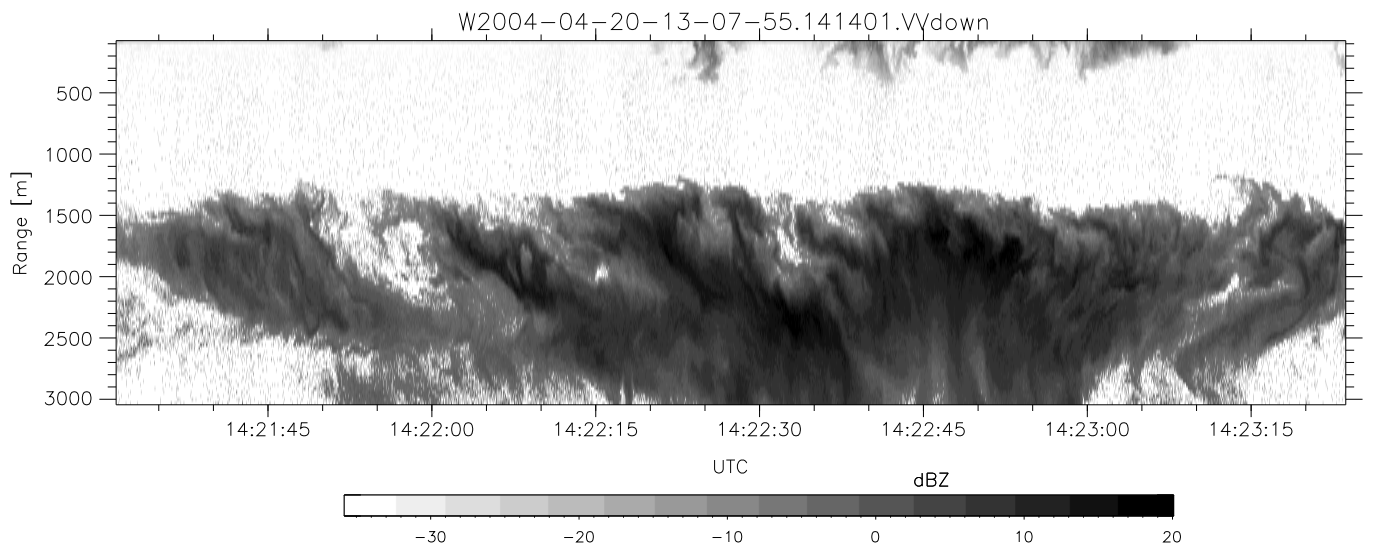
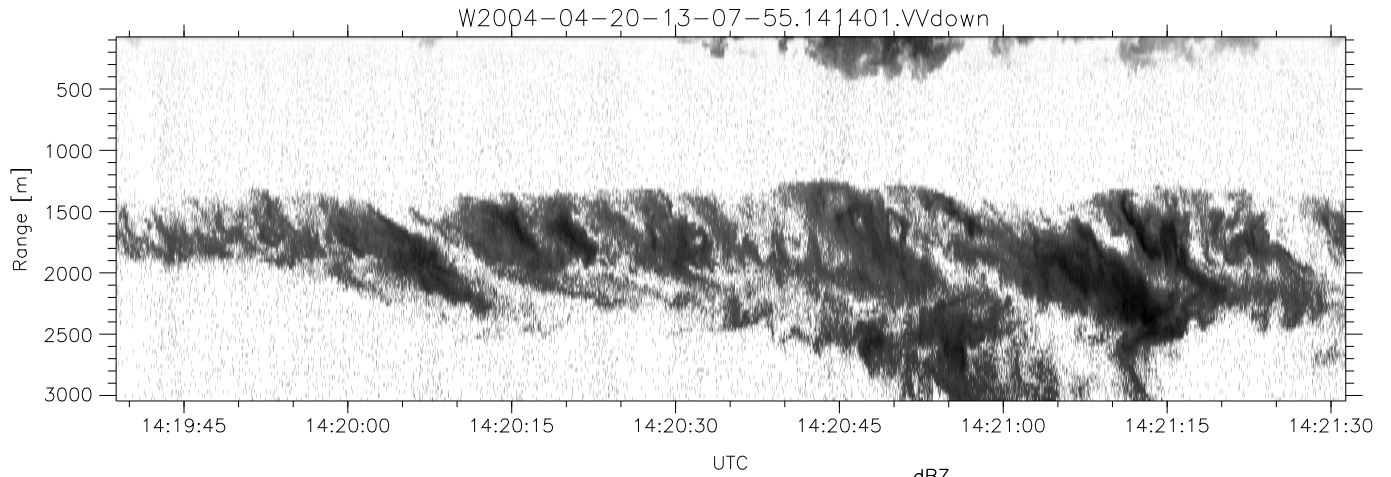


CIFEX 2004 Data (cal/250ns+2.5/100ns-3.5/500ns: 61.0,58.0)

W2004-04-20-13-07-55 - PPMAG4, IRIG:1/0/0
 UTC: 13:07:55.33 to 14:53:40.51, Dur: 6345s
 TimeLngth: 6345.16s, TimeInt: 28ms (35.4pps)
 TimeCor=-13.0s, PPS(min,max,med): 35,36,35
 Timeint/DSPdiff(mn,min,mx):28,28,30/28,28,30
 Prof: 254 to 225117, NumProf(r/t): 35142/224863
 ProcTime/Recs: 14:14:01-14:30:33/140568-175709
 ADacqtime: 25ms; DRate: 198.4KB/s; Flags: 0, 0, 0
 Pulse: 275ns, IFilt: 5.0MHz; ppPol: HH HV VV
 TxPol: HHVV, PRF: 20 10 20 10 kHz, Noiseflg:4,2
 Range: Delay 75m, Spacing 30m, Gates 100
 Ave. Pulses: 84, Rng/Prof Aspect@90m/s: 11.8

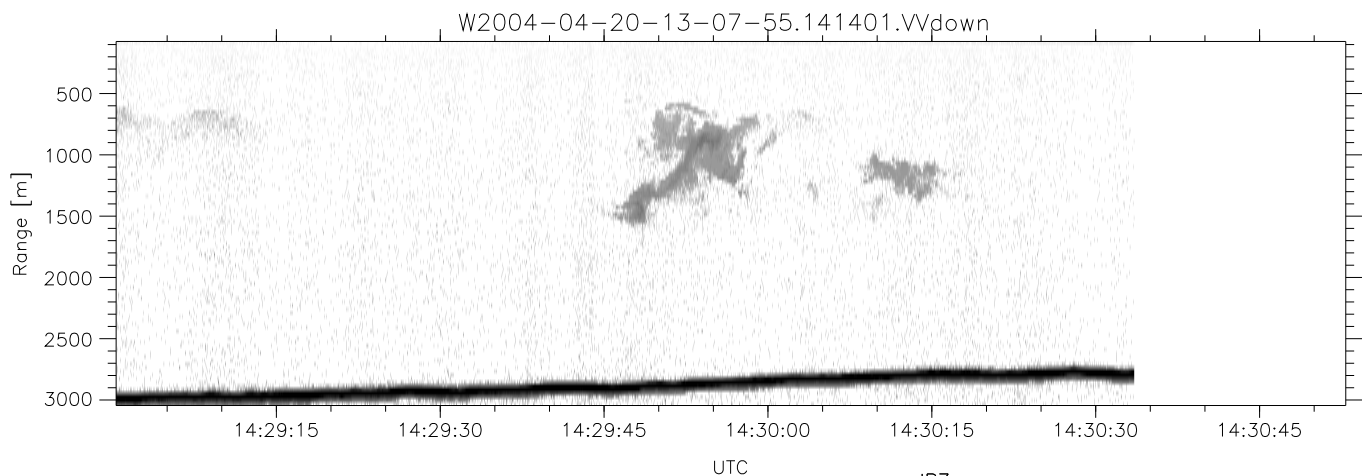
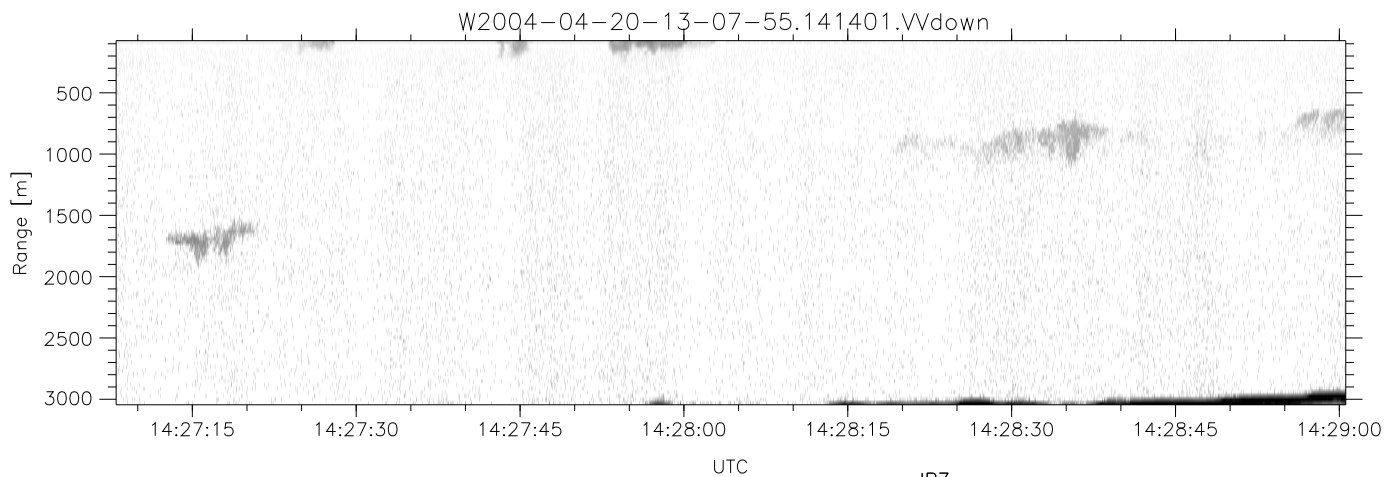
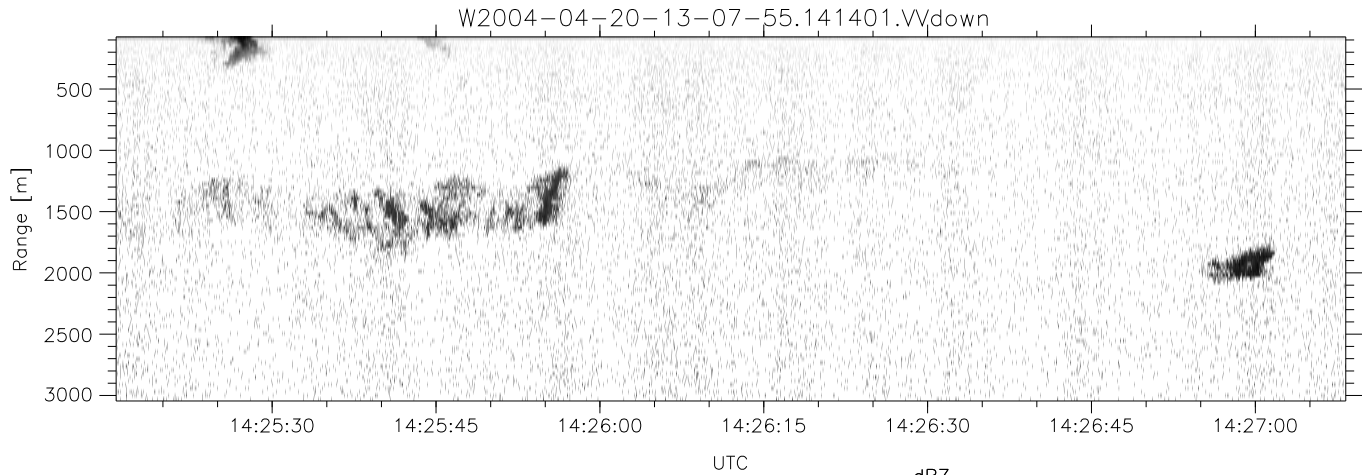
	Min	Max	Mean	Std	Varc%
hhN (dB)	-67.18	-63.77	-65.33	-75.43	9.8
vvN (dB)	-67.52	-63.89	-65.50	-75.54	9.9
hhL (dB)	-13.46	-5.41	-8.18	-13.66	28.3
vvL (dB)	-16.77	-1.21	-4.24	-8.19	40.3
ppN (m/s)	-12.82	12.28	-0.03	4.14	
ppT (m/s)	-101.2	96.98	-0.20	32.72	
hh/vv (dB)	NaN	Inf	Inf	-NaN	-NaN
vh/hh (dB)	NaN	-28.84	-36.11	-35.61	112.
hv/vv (dB)	NaN	-35.88	NaN	-45.15	-114
hn_jmp (dB)			-0.14		
vn_jmp (dB)			-0.14		



CIFEX 2004 Data (cal/250ns+2.5/100ns-3.5/500ns: 61.0,58.0)

W2004-04-20-13-07-55 - PPMAG4, IRIG:1/0/0
 UTC: 13:07:55.33 to 14:53:40.51, Dur: 6345s
 TimeLngth: 6345.16s, TimeInt: 28ms (35.4pps)
 TimeCor=-13.0s, PPS(min,max,med): 35,36,35
 Timeint/DSPdiff(mn,min,mx):28,28,30/28,28,30
 Prof: 254 to 225117, NumProf(r/t): 35142/224863
 ProcTime/Recs: 14:14:01-14:30:33/140568-175709
 ADacqtime: 25ms; DRate: 198.4KB/s; Flags: 0, 0, 0
 Pulse: 275ns, IFfilt: 5.0MHz; ppPol: HH HV VV
 TxPol: HHVV, PRF: 20 10 20 10 kHz, NoiseFlg:4,2
 Range: Delay 75m, Spacing 30m, Gates 100
 Ave. Pulses: 84, Rng/Prof Aspect@90m/s: 11.8

	Min	Max	Mean	Std	Varc%
hhN (dB)	-67.18	-63.77	-65.33	-75.43	9.8
vvN (dB)	-67.52	-63.89	-65.50	-75.54	9.9
hhL (dB)	-13.46	-5.41	-8.18	-13.66	28.3
vvL (dB)	-16.77	-1.21	-4.24	-8.19	40.3
ppN (m/s)	-12.82	12.28	-0.03	4.14	
ppT (m/s)	-101.2	96.98	-0.20	32.72	
hh/vv (dB)	NaN	Inf	Inf	-NaN	-NaN
vh/hh (dB)	NaN	-28.84	-36.11	-35.61	112.
hv/vv (dB)	NaN	-35.88	NaN	-45.15	-114
hnjmp (dB)			-0.14		
vnjmp (dB)			-0.14		



CIFEX 2004 Data (cal/250ns+2.5/100ns-3.5/500ns: 61.0,58.0)

W2004-04-20-13-07-55 - PPMAG4, IRIG:1/0/0
 UTC: 13:07:55.33 to 14:53:40.51, Dur: 6345s
 TimeLngth: 6345.16s, TimeInt: 28ms (35.4pps)
 TimeCor=-13.0s, PPS(min,max,med): 35,36,35
 Timeint/DSPdiff(mn,min,mx):28,28,30/28,28,30
 Prof: 254 to 225117, NumProf(r/t): 35142/224863
 ProcTime/Recs: 14:14:01-14:30:33/140568-175709
 ADacqtime: 25ms; DRate: 198.4KB/s; Flags: 0, 0, 0
 Pulse: 275ns, IFilt: 5.0MHz; ppPol: HH HV VV
 TxPol: HHVV, PRF: 20 10 20 10 kHz, NoiseFlg:4,2
 Range: Delay 75m, Spacing 30m, Gates 100
 Ave. Pulses: 84, Rng/Prof Aspect@90m/s: 11.8

	Min	Max	Mean	Std	Varc%
hhN (dB)	-67.18	-63.77	-65.33	-75.43	9.8
vvN (dB)	-67.52	-63.89	-65.50	-75.54	9.9
hhL (dB)	-13.46	-5.41	-8.18	-13.66	28.3
vvL (dB)	-16.77	-1.21	-4.24	-8.19	40.3
ppN (m/s)	-12.82	12.28	-0.03	4.14	
ppT (m/s)	-101.2	96.98	-0.20	32.72	
hh/vv (dB)	NaN	Inf	Inf	-NaN	-NaN
vh/hh (dB)	NaN	-28.84	-36.11	-35.61	112.
hv/vv (dB)	NaN	-35.88	NaN	-45.15	-114
hnjmp (dB)			-0.14		
vnjmp (dB)			-0.14		