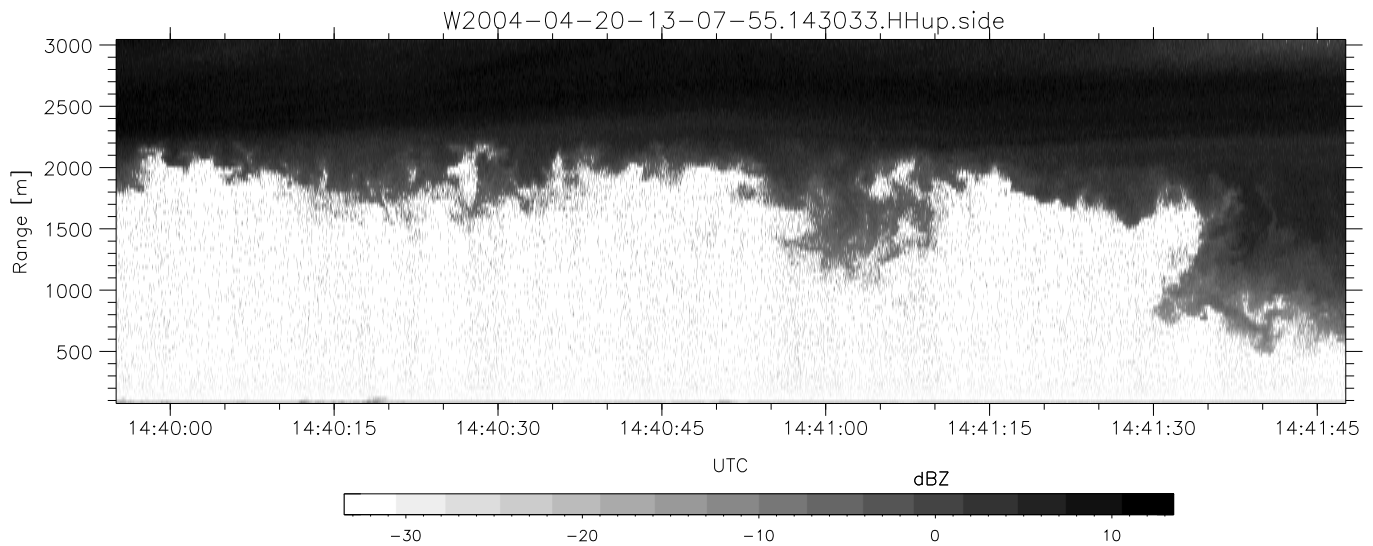
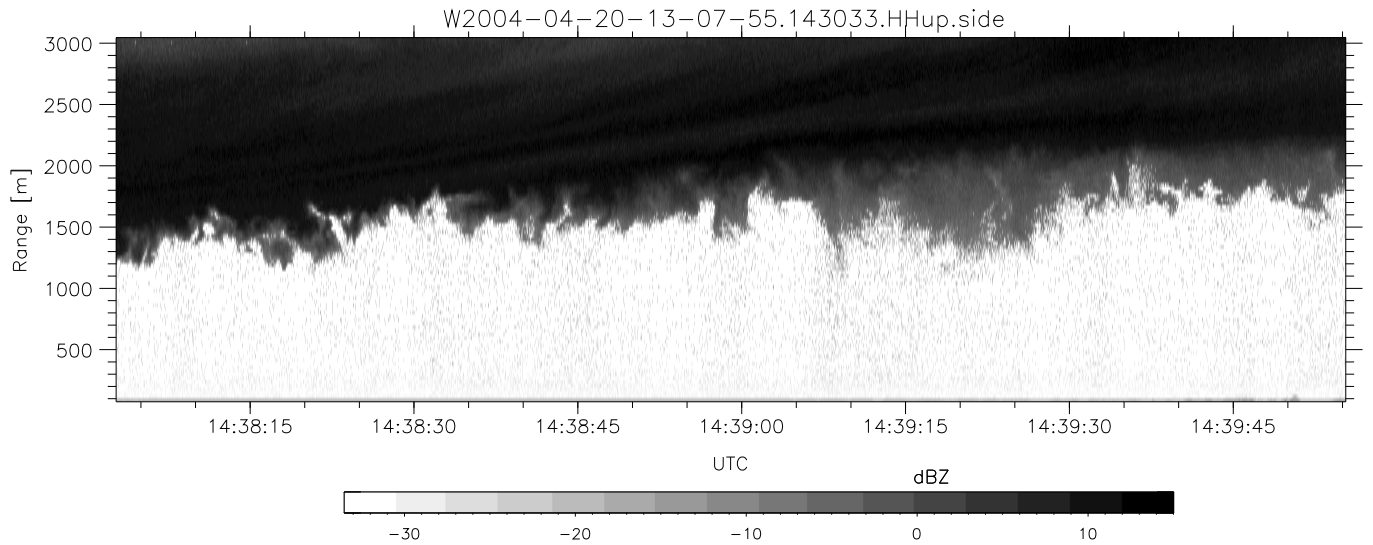
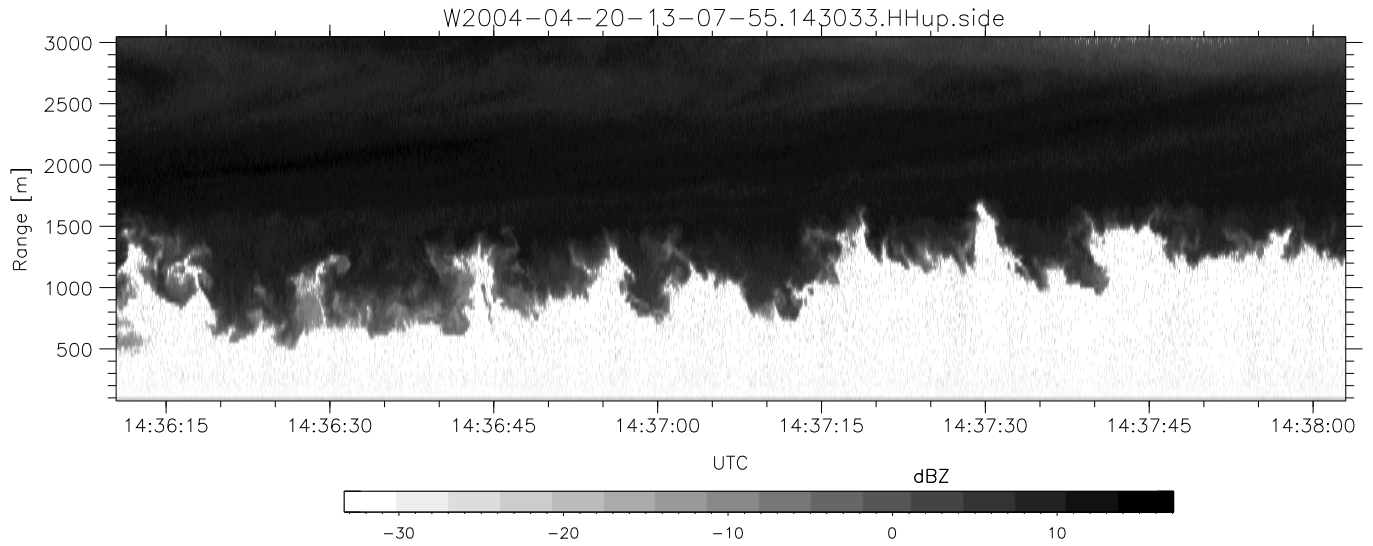


CIFEX 2004 Data (cal/250ns+2.5/100ns-3.5/500ns: 61.0,58.0)

W2004-04-20-13-07-55 - PPMAG4, IRIG:1/0/0  
 UTC: 13:07:55.33 to 14:53:40.51, Dur: 6345s  
 TimeLngth: 6345.16s, TimeInt: 28ms (35.4pps)  
 TimeCor=-13.0s, PPS(min,max,med): 35,36,35  
 Timeint/DSPdiff(mn,min,mx):28,28,29/28,28,29  
 Prof: 254 to 225117, NumProf(r/t): 35142/224863  
 ProcTime/Recs: 14:30:33-14:47:05/175710-210851  
 ADacqtime: 25ms; DRate: 198.4KB/s; Flags: 0, 0, 0  
 Pulse: 275ns, IFilt: 5.0MHz; ppPol: HH HV VV  
 TxPol: HHVV, PRF: 20 10 20 10 kHz, Noiseflg:4,2  
 Range: Delay 75m, Spacing 30m, Gates 100  
 Ave. Pulses: 84, Rng/Prof Aspect@90m/s: 11.8

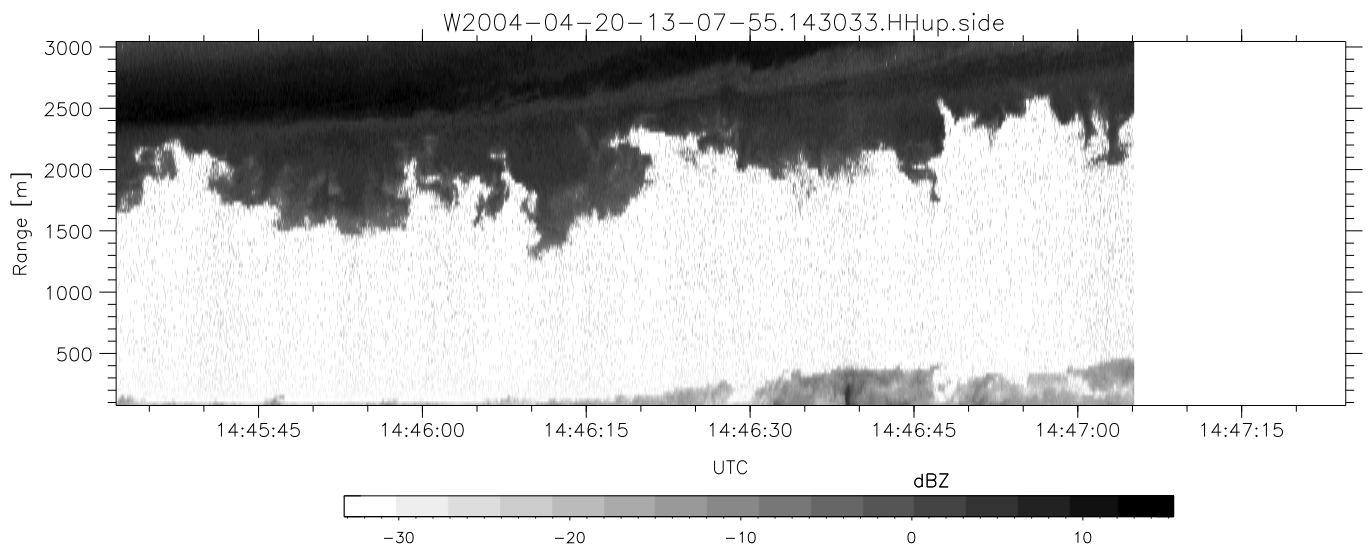
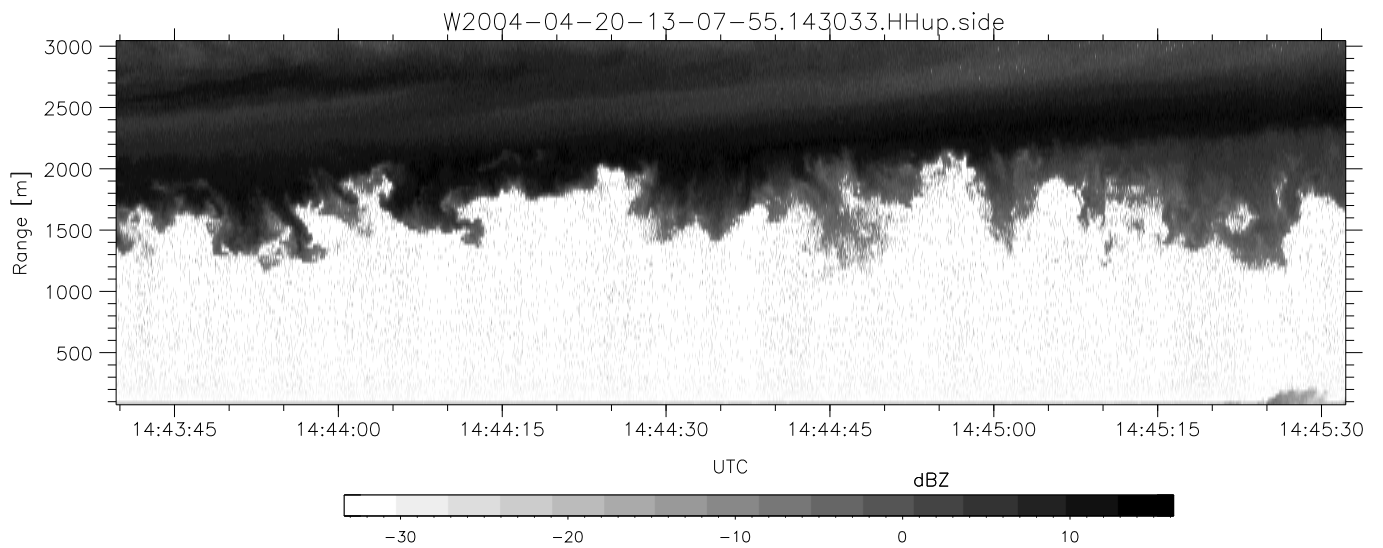
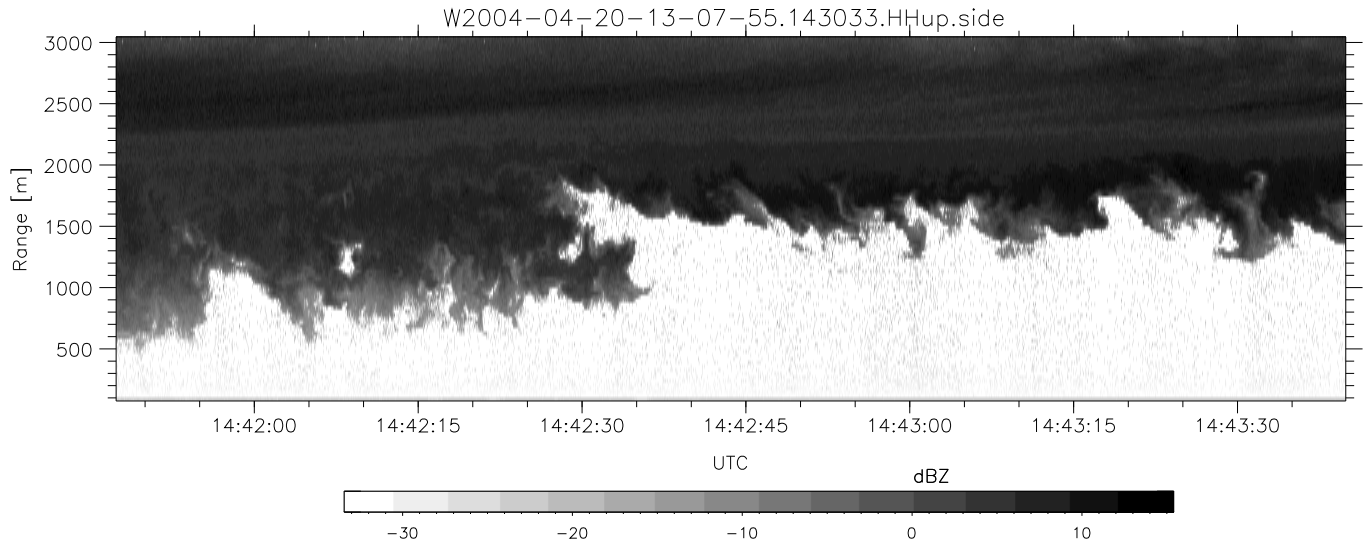
	Min	Max	Mean	Std	Varc%
hhN(dB)	-67.37	-63.72	-65.43	-75.47	9.9
vvN(dB)	-67.33	-63.86	-65.51	-75.52	10.0
hhL(dB)	-14.50	-2.25	-5.82	-10.50	34.0
vvL(dB)	-15.52	-1.59	-6.79	-11.08	37.3
ppN(m/s)	-12.43	12.67	-0.01	4.15	
ppT(m/s)	-98.17	100.06	-0.11	32.77	
hh/vv(dB)	NaN	Inf	Inf	-NaN	-NaN
vh/hh(dB)	NaN	-30.86	-35.59	-33.78	151.
hv/vv(dB)	NaN	-34.24	-58.20	-46.32	1542
hnjmp(dB)			-0.15		
vnjmp(dB)			-0.14		



CIFEX 2004 Data (cal/250ns+2.5/100ns-3.5/500ns: 61.0,58.0)

W2004-04-20-13-07-55 - PPMAG4, IRIG:1/0/0  
 UTC: 13:07:55.33 to 14:53:40.51, Dur: 6345s  
 TimeLngth: 6345.16s, TimeInt: 28ms (35.4pps)  
 TimeCor=-13.0s, PPS(min,max,med): 35,36,35  
 Timeint/DSPdiff(mn,min,mx):28,28,29/28,28,29  
 Prof: 254 to 225117, NumProf(r/t): 35142/224863  
 ProcTime/Recs: 14:30:33-14:47:05/175710-210851  
 ADacqtime: 25ms; DRate: 198.4KB/s; Flags: 0, 0, 0  
 Pulse: 275ns, IFfilt: 5.0MHz; ppPol: HH HV VV  
 TxPol: HHVV, PRF: 20 10 20 10 kHz, Noiseflg:4,2  
 Range: Delay 75m, Spacing 30m, Gates 100  
 Ave. Pulses: 84, Rng/Prof Aspect@90m/s: 11.8

	Min	Max	Mean	Std	Varc%
hhN (dB)	-67.37	-63.72	-65.43	-75.47	9.9
vvN (dB)	-67.33	-63.86	-65.51	-75.52	10.0
hhL (dB)	-14.50	-2.25	-5.82	-10.50	34.0
vvL (dB)	-15.52	-1.59	-6.79	-11.08	37.3
ppN (m/s)	-12.43	12.67	-0.01	4.15	
ppT (m/s)	-98.17	100.06	-0.11	32.77	
hh/vv (dB)	NaN	Inf	Inf	-NaN	-NaN
vh/hh (dB)	NaN	-30.86	-35.59	-33.78	151.
hv/vv (dB)	NaN	-34.24	-58.20	-46.32	1542
hnjmp (dB)			-0.15		
vnjmp (dB)			-0.14		



CIFEX 2004 Data (cal/250ns+2.5/100ns-3.5/500ns: 61.0,58.0)

W2004-04-20-13-07-55 - PPMAG4, IRIG:1/0/0  
 UTC: 13:07:55.33 to 14:53:40.51, Dur: 6345s  
 TimeLngth: 6345.16s, TimeInt: 28ms (35.4pps)  
 TimeCor=-13.0s, PPS(min,max,med): 35,36,35  
 Timeint/DSPdiff(mn,min,mx):28,28,29/28,28,29  
 Prof: 254 to 225117, NumProf(r/t): 35142/224863  
 ProcTime/Recs: 14:30:33-14:47:05/175710-210851  
 ADacqtime: 25ms; DRate: 198.4KB/s; Flags: 0, 0, 0  
 Pulse: 275ns, IFilt: 5.0MHz; ppPol: HH HV VV  
 TxPol: HHVV, PRF: 20 10 20 10 kHz, Noiseflg:4,2  
 Range: Delay 75m, Spacing 30m, Gates 100  
 Ave. Pulses: 84, Rng/Prof Aspect@90m/s: 11.8

	Min	Max	Mean	Std	Varc%
hhN(dB)	-67.37	-63.72	-65.43	-75.47	9.9
vvN(dB)	-67.33	-63.86	-65.51	-75.52	10.0
hhL(dB)	-14.50	-2.25	-5.82	-10.50	34.0
vvL(dB)	-15.52	-1.59	-6.79	-11.08	37.3
ppN(m/s)	-12.43	12.67	-0.01	4.15	
ppT(m/s)	-98.17	100.06	-0.11	32.77	
hh/vv(dB)	NaN	Inf	Inf	-NaN	-NaN
vh/hh(dB)	NaN	-30.86	-35.59	-33.78	151.
hv/vv(dB)	NaN	-34.24	-58.20	-46.32	1542
hnjmp(dB)			-0.15		
vnjmp(dB)			-0.14		