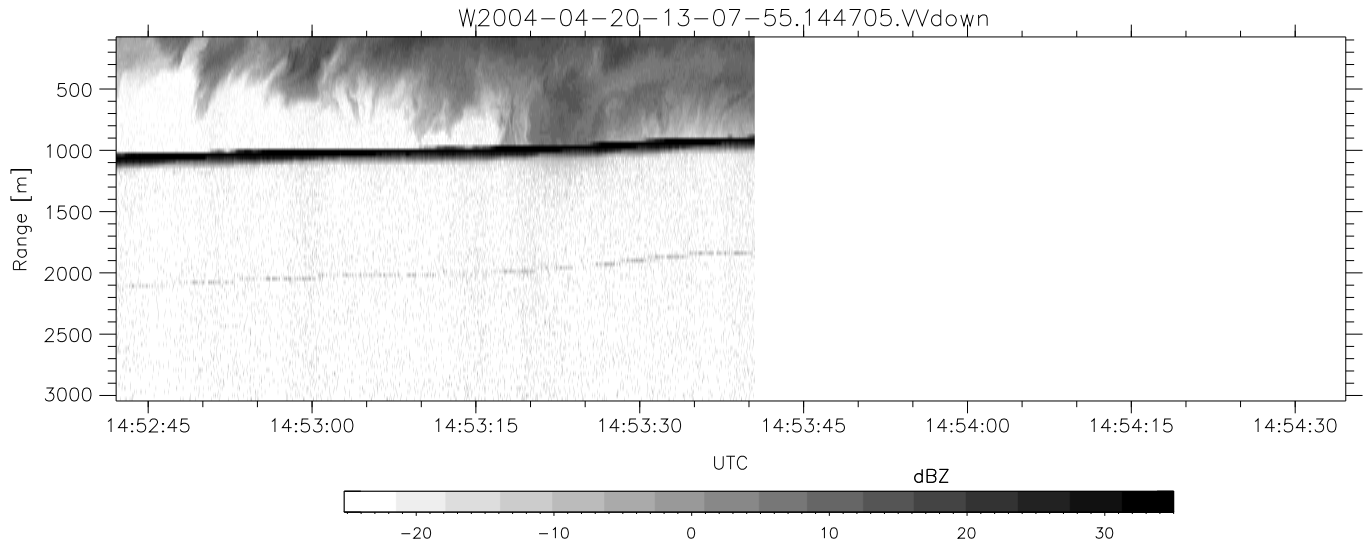


CIFEX 2004 Data (cal/250ns+2.5/100ns-3.5/500ns: 61.0,58.0)

W2004-04-20-13-07-55 - PPMAG4, IRIG:1/0/0  
 UTC: 13:07:55.33 to 14:53:40.51, Dur: 6345s  
 TimeLngth: 6345.16s, TimeInt: 28ms (35.4pps)  
 TimeCor=-13.0s, PPS(min,max,med): 35,36,35  
 Timeint/DSPdiff(mn,min,mx):28,28,34/28,28,34  
 Prof: 254 to 225117, NumProf(r/t): 14011/224863  
 ProcTime/Recs: 14:47:05-14:53:40/210852-224862  
 ADacqtime: 25ms; DRate: 198.4KB/s; Flags: 0, 0, 0  
 Pulse: 275ns, IFilt: 5.0MHz; ppPol: HH HV VV  
 TxPol: HHVV, PRF: 20 10 20 10 kHz, NoiseFlg:4,3  
 Range: Delay 75m, Spacing 30m, Gates 100  
 Ave. Pulses: 84, Rng/Prof Aspect@90m/s: 11.8

	Min	Max	Mean	Std	Varc%
hhN (dB)	-67.26	-63.91	-65.49	-75.58	9.8
vvN (dB)	-67.28	-64.14	-65.54	-75.60	9.9
hhL (dB)	-21.65	-3.60	-6.50	-10.23	42.3
vvL (dB)	-7.75	1.05	-1.11	-8.23	19.4
ppN (m/s)	-12.79	12.51	-0.01	4.19	
ppT (m/s)	-101.0	98.81	-0.10	33.10	
hh/vv (dB)	NaN	61.31	NaN	44.34	-468
vh/hh (dB)	NaN	-27.39	-38.28	-36.56	148.
hv/vv (dB)	NaN	-33.18	-46.64	-42.40	265.
hnjmp (dB)			-0.16		
vnjmp (dB)			-0.14		



CIFEX 2004 Data (cal/250ns+2.5/100ns-3.5/500ns: 61.0,58.0)

W2004-04-20-13-07-55 - PPMAG4, IRIG:1/0/0  
 UTC: 13:07:55.33 to 14:53:40.51, Dur: 6345s  
 TimeLngth: 6345.16s, TimeInt: 28ms (35.4pps)  
 TimeCor=-13.0s, PPS(min,max,med): 35,36,35  
 Timeint/DSPdiff(mn,min,mx):28,28,34/28,28,34  
 Prof: 254 to 225117, NumProf(r/t): 14011/224863  
 ProcTime/Recs: 14:47:05-14:53:40/210852-224862  
 ADacqtime: 25ms; DRate: 198.4KB/s; Flags: 0, 0, 0  
 Pulse: 275ns, IFfilt: 5.0MHz; ppPol: HH HV VV  
 TxPol: HHVV, PRF: 20 10 20 10 kHz, Noiseflg:4,3  
 Range: Delay 75m, Spacing 30m, Gates 100  
 Ave. Pulses: 84, Rng/Prof Aspect@90m/s: 11.8

	Min	Max	Mean	Std	Varc%
hhN(dB)	-67.26	-63.91	-65.49	-75.58	9.8
vvN(dB)	-67.28	-64.14	-65.54	-75.60	9.9
hhL(dB)	-21.65	-3.60	-6.50	-10.23	42.3
vvL(dB)	-7.75	1.05	-1.11	-8.23	19.4
ppN(m/s)	-12.79	12.51	-0.01	4.19	
ppT(m/s)	-101.0	98.81	-0.10	33.10	
hh/vv(dB)	NaN	61.31	NaN	44.34	-468
vh/hh(dB)	NaN	-27.39	-38.28	-36.56	148.
hv/vv(dB)	NaN	-33.18	-46.64	-42.40	265.
hnjmp(dB)			-0.16		
vnjmp(dB)			-0.14		