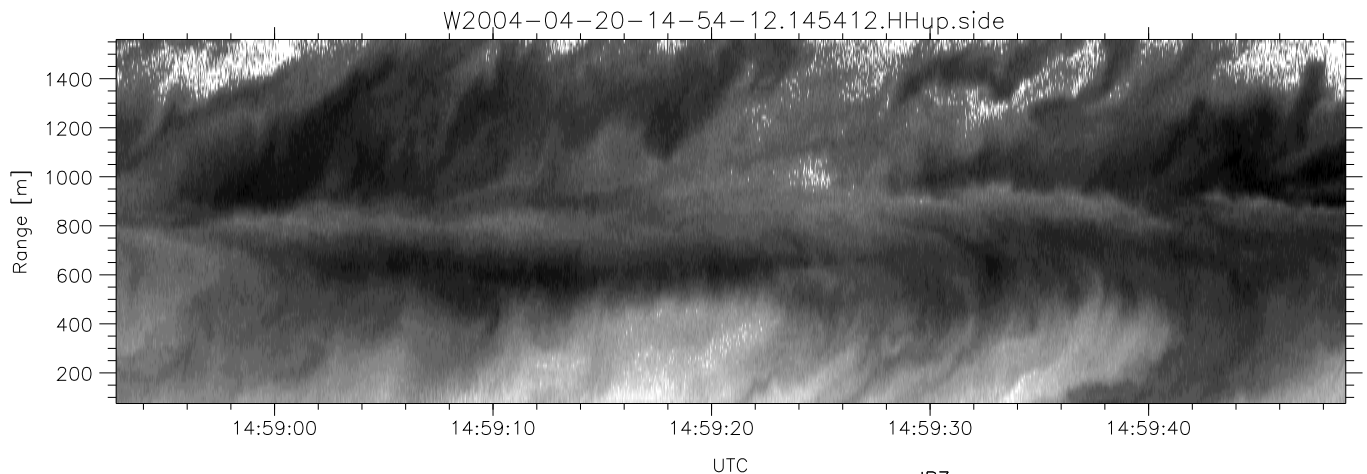
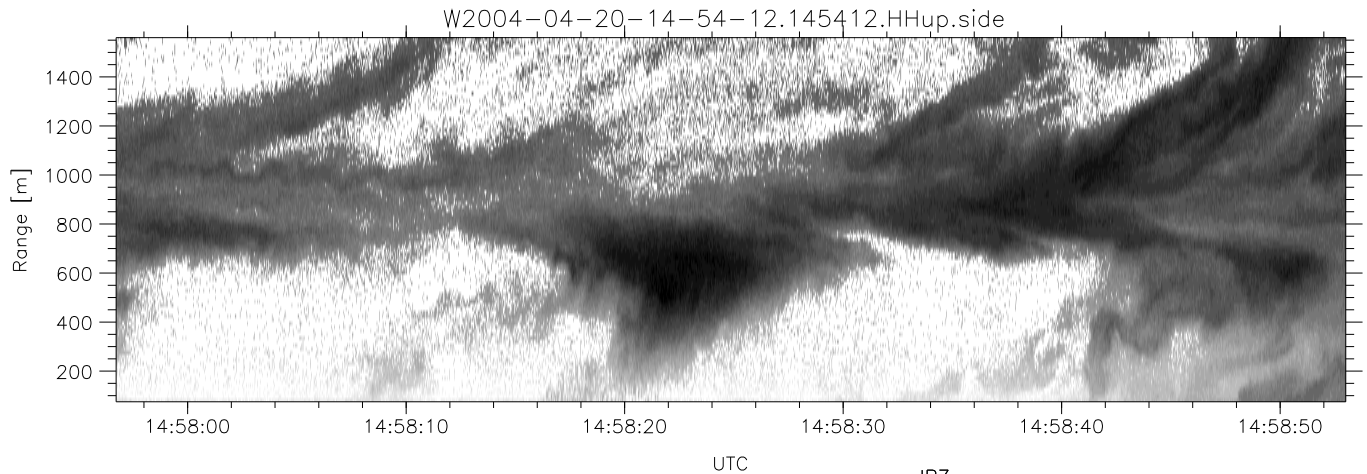
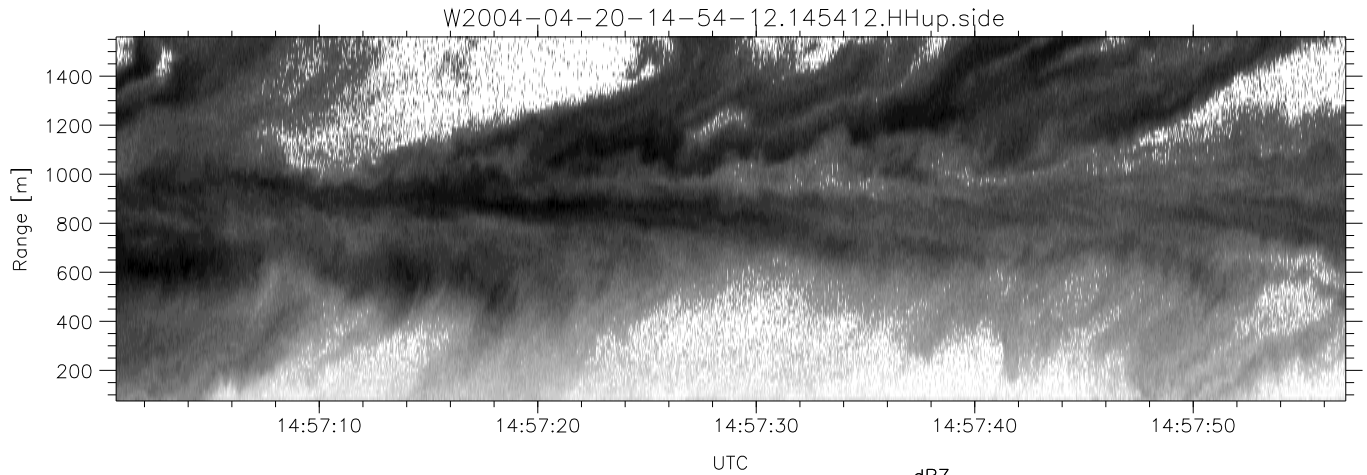


CIFEX 2004 Data (cal/250ns+2.5/100ns-3.5/500ns: 61.0,58.0)

W2004-04-20-14-54-12 - PPMAG4, IRIG:1/0/0
 UTC: 14:54:12.67 to 15:09:57.79, Dur: 945s
 TimeLngth: 945.14s, TimeInt: 28ms (35.4pps)
 TimeCor=-13.0s, PPS(min,max,med): 35,36,35
 Timeint/DSPdiff(mn,min,mx):28,28,28/28,28,28
 Prof: 282 to 33788, NumProf(r/t): 17571/33506
 ProcTime/Recs: 14:54:12-15:02:28/0-17570
 ADacqtime: 25ms; DRate: 198.4KB/s; Flags: 0, 0, 0
 Pulse: 275ns, IFilt: 5.0MHz; ppPol: HH HV VV
 TxPol: HHVV, PRF: 20 10 20 10 kHz, NoiseFlg:4,2
 Range: Delay 75m, Spacing 15m, Gates 100
 Ave. Pulses: 84, Rng/Prof Aspect@90m/s: 5.9

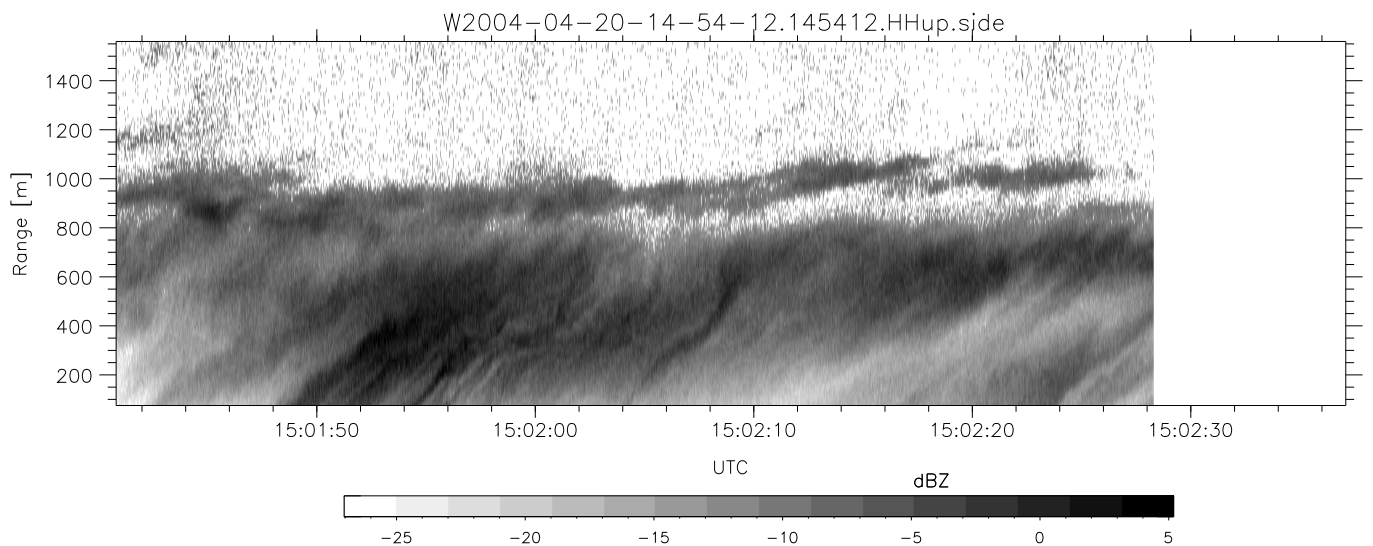
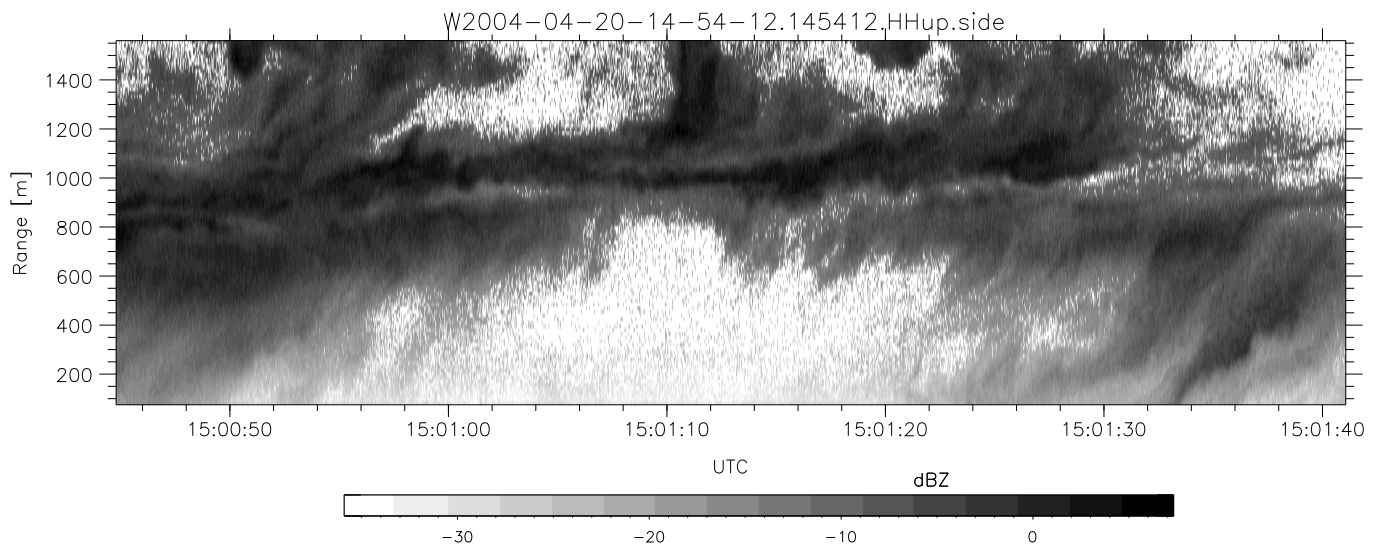
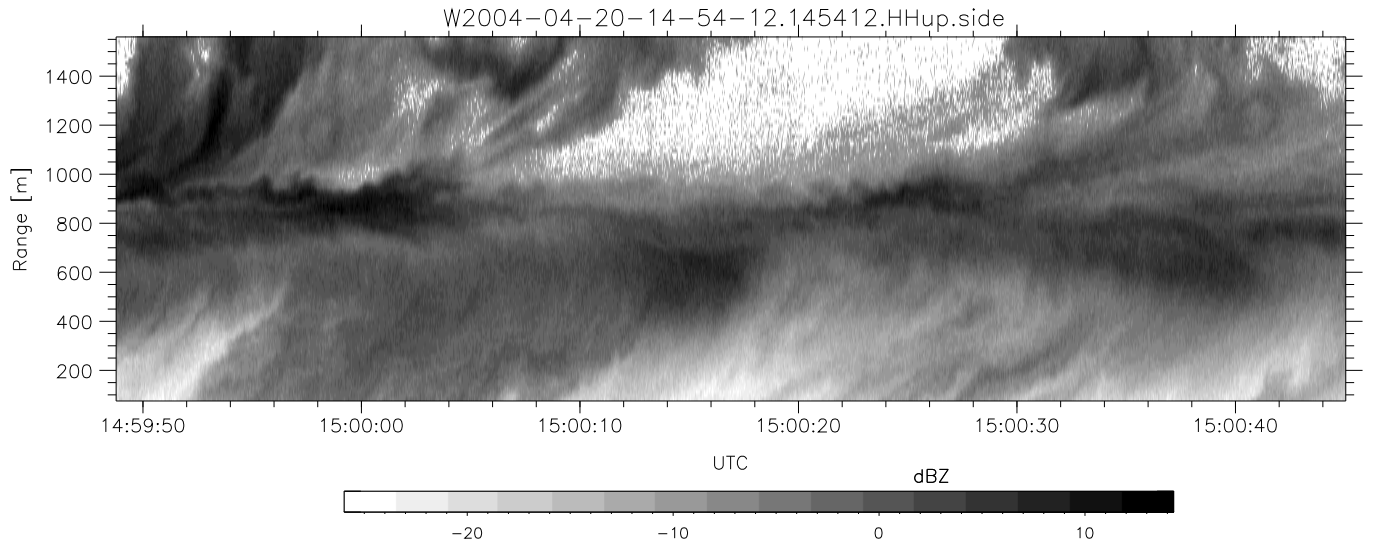
| | Min | Max | Mean | Std | Varc% |
|-----------|--------|--------|--------|--------|-------|
| hhN(dB) | -67.18 | -63.98 | -65.55 | -75.64 | 9.8 |
| vvN(dB) | -67.46 | -63.85 | -65.65 | -75.66 | 10.0 |
| hhL(dB) | -20.78 | -7.36 | -14.70 | -17.35 | 54.4 |
| vvL(dB) | -3.30 | 5.90 | 2.88 | -2.19 | 31.1 |
| ppN(m/s) | -12.06 | 12.34 | -0.02 | 4.13 | |
| ppT(m/s) | -95.28 | 97.51 | -0.14 | 32.63 | |
| hh/vv(dB) | NaN | 69.77 | 11.34 | 49.80 | 7025 |
| vh/hh(dB) | NaN | -12.69 | -36.83 | -33.36 | 222. |
| hv/vv(dB) | NaN | -33.91 | -51.48 | -44.97 | 447. |
| hnjmp(dB) | | | -0.14 | | |
| vnjmp(dB) | | | -0.17 | | |



CIFEX 2004 Data (cal/250ns+2.5/100ns-3.5/500ns: 61.0,58.0)

W2004-04-20-14-54-12 - PPMAG4, IRIG:1/0/0
 UTC: 14:54:12.67 to 15:09:57.79, Dur: 945s
 TimeLngth: 945.14s, TimeInt: 28ms (35.4pps)
 TimeCor=-13.0s, PPS(min,max,med): 35,36,35
 Timeint/DSPdiff(mn,min,mx):28,28,28/28,28,28
 Prof: 282 to 33788, NumProf(r/t): 17571/33506
 ProcTime/Recs: 14:54:12-15:02:28/0-17570
 ADacqtime: 25ms; DRate: 198.4KB/s; Flags: 0, 0, 0
 Pulse: 275ns, IFilt: 5.0MHz; ppPol: HH HV VV
 TxPol: HHVV, PRF: 20 10 20 10 kHz, NoiseFlg:4,2
 Range: Delay 75m, Spacing 15m, Gates 100
 Ave. Pulses: 84, Rng/Prof Aspect@90m/s: 5.9

| | Min | Max | Mean | Std | Varc% |
|------------|--------|--------|--------|--------|-------|
| hhN (dB) | -67.18 | -63.98 | -65.55 | -75.64 | 9.8 |
| vvN (dB) | -67.46 | -63.85 | -65.65 | -75.66 | 10.0 |
| hhL (dB) | -20.78 | -7.36 | -14.70 | -17.35 | 54.4 |
| vvL (dB) | -3.30 | 5.90 | 2.88 | -2.19 | 31.1 |
| ppN (m/s) | -12.06 | 12.34 | -0.02 | 4.13 | |
| ppT (m/s) | -95.28 | 97.51 | -0.14 | 32.63 | |
| hh/vv (dB) | NaN | 69.77 | 11.34 | 49.80 | 7025 |
| vh/hh (dB) | NaN | -12.69 | -36.83 | -33.36 | 222. |
| hv/vv (dB) | NaN | -33.91 | -51.48 | -44.97 | 447. |
| hnjmp (dB) | | | -0.14 | | |
| vnjmp (dB) | | | -0.17 | | |



CIFEX 2004 Data (cal/250ns+2.5/100ns-3.5/500ns: 61.0,58.0)

W2004-04-20-14-54-12 - PPMAG4, IRIG:1/0/0
 UTC: 14:54:12.67 to 15:09:57.79, Dur: 945s
 TimeLngth: 945.14s, TimeInt: 28ms (35.4pps)
 TimeCor=-13.0s, PPS(min,max,med): 35,36,35
 Timeint/DSPdiff(mn,min,mx):28,28,28/28,28,28
 Prof: 282 to 33788, NumProf(r/t): 17571/33506
 ProcTime/Recs: 14:54:12-15:02:28/0-17570
 ADacqtime: 25ms; DRate: 198.4KB/s; Flags: 0, 0, 0
 Pulse: 275ns, IFilt: 5.0MHz; ppPol: HH HV VV
 TxPol: HHVV, PRF: 20 10 20 10 kHz, NoiseFlg:4,2
 Range: Delay 75m, Spacing 15m, Gates 100
 Ave. Pulses: 84, Rng/Prof Aspect@90m/s: 5.9

| | Min | Max | Mean | Std | Varc% |
|-------------|--------|--------|--------|--------|-------|
| hhN (dB) | -67.18 | -63.98 | -65.55 | -75.64 | 9.8 |
| vvN (dB) | -67.46 | -63.85 | -65.65 | -75.66 | 10.0 |
| hhL (dB) | -20.78 | -7.36 | -14.70 | -17.35 | 54.4 |
| vvL (dB) | -3.30 | 5.90 | 2.88 | -2.19 | 31.1 |
| ppN (m/s) | -12.06 | 12.34 | -0.02 | 4.13 | |
| ppT (m/s) | -95.28 | 97.51 | -0.14 | 32.63 | |
| hh/vv (dB) | NaN | 69.77 | 11.34 | 49.80 | 7025 |
| vh/hh (dB) | NaN | -12.69 | -36.83 | -33.36 | 222. |
| hv/vv (dB) | NaN | -33.91 | -51.48 | -44.97 | 447. |
| hn_jmp (dB) | | | -0.14 | | |
| vn_jmp (dB) | | | -0.17 | | |