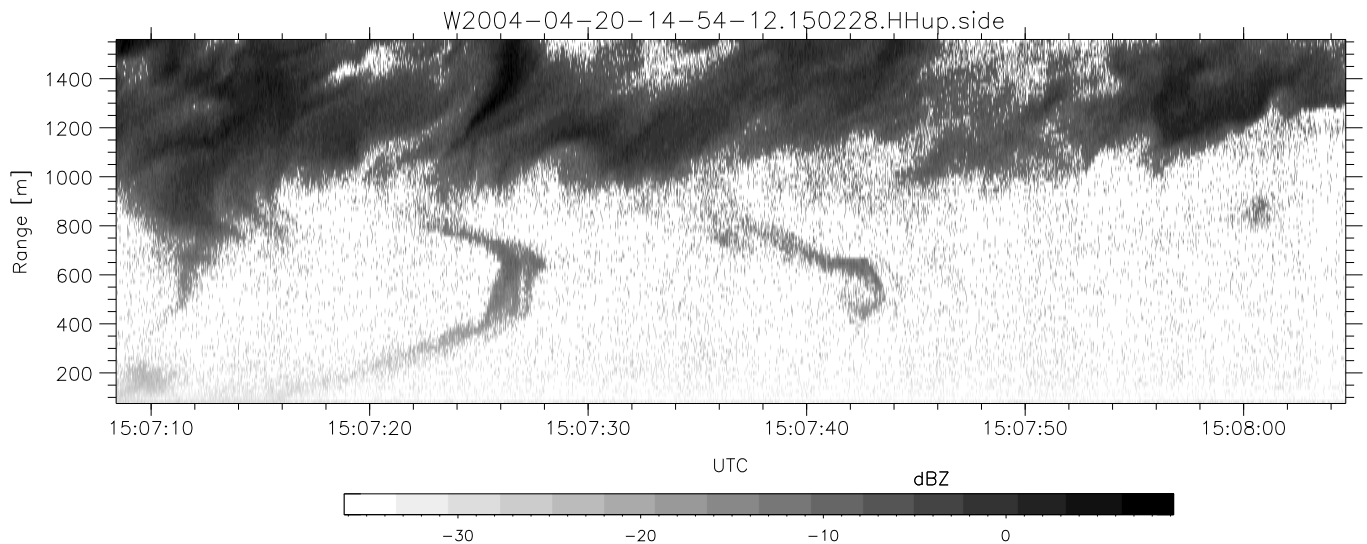
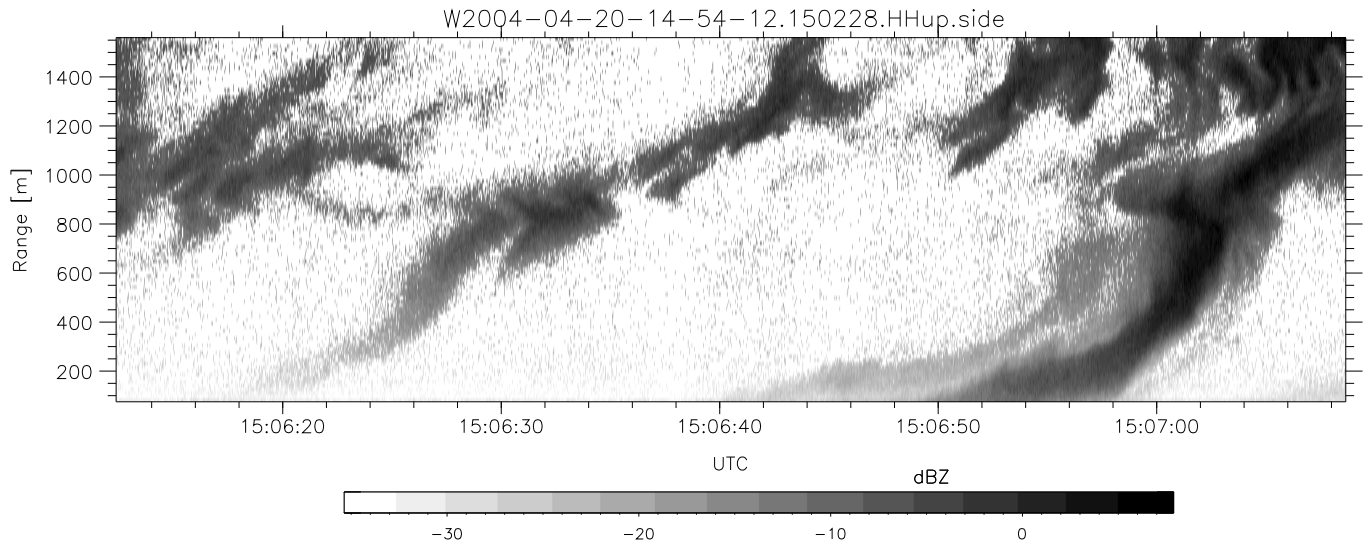
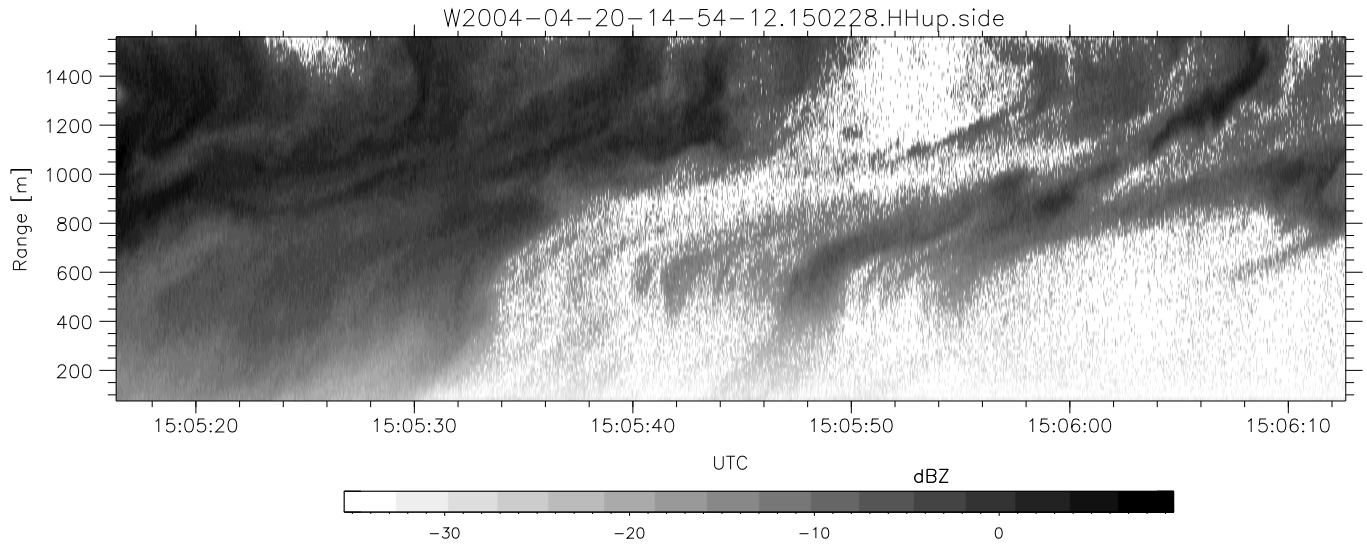


CIFEX 2004 Data (cal/250ns+2.5/100ns-3.5/500ns: 61.0,58.0)

W2004-04-20-14-54-12 - PPMAG4, IRIG:1/0/0  
 UTC: 14:54:12.67 to 15:09:57.79, Dur: 945s  
 TimeLngth: 945.11s, TimeInt: 28ms (35.5pps)  
 TimeCor=-13.0s, PPS(min,max,med): 35,36,35  
 Timeint/DSPdiff(mn,min,mx):28,28,28/28,28,28  
 Prof: 282 to 33788, NumProf(r/t): 15935/33506  
 ProcTime/Recs: 15:02:28-15:09:57/17571-33505  
 ADacqtime: 25ms; DRate: 198.4KB/s; Flags: 0, 0, 0  
 Pulse: 275ns, IFfilt: 5.0MHz; ppPol: HH HV VV  
 TxPol: HHVV, PRF: 20 10 20 10 kHz, Noiseflg:4,2  
 Range: Delay 75m, Spacing 15m, Gates 100  
 Ave. Pulses: 84, Rng/Prof Aspect@90m/s: 5.9

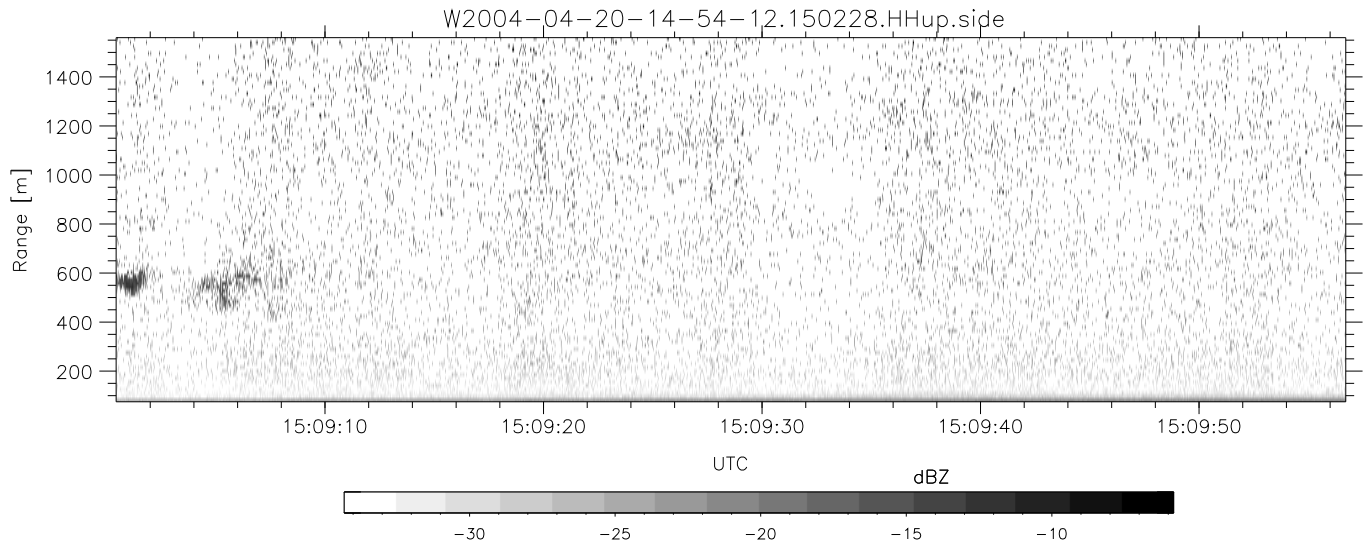
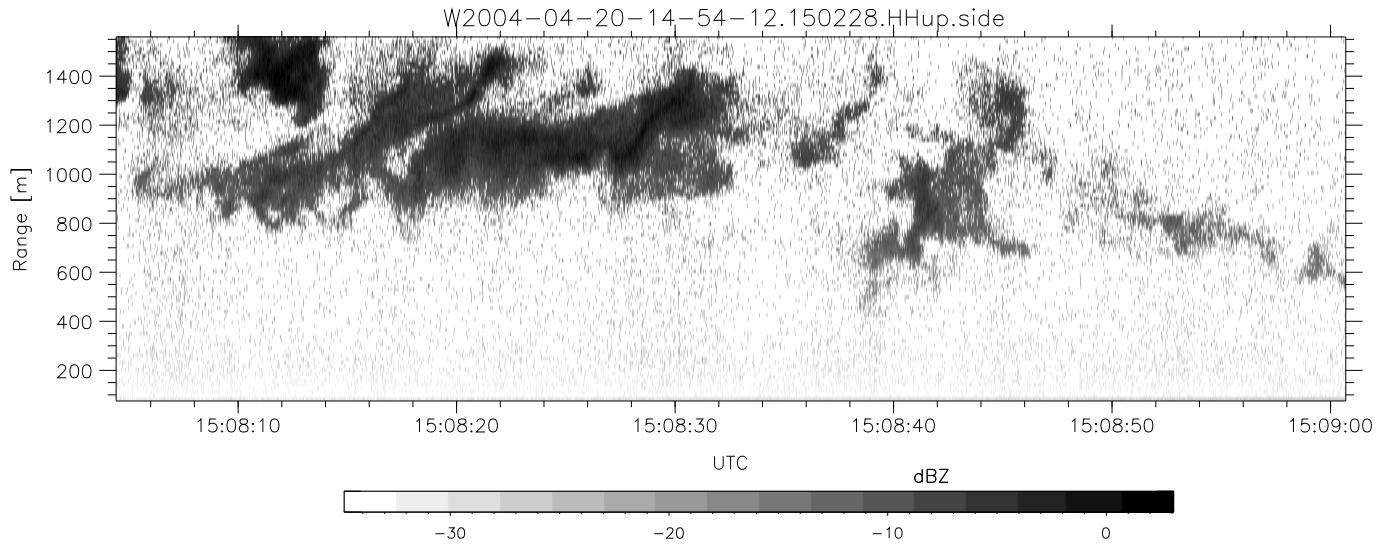
	Min	Max	Mean	Std	Varc%
hhN (dB)	-67.43	-64.08	-65.66	-75.67	10.0
vvN (dB)	-67.59	-64.23	-65.72	-75.76	9.9
hhL (dB)	-19.64	-4.16	-12.55	-11.03	142.
vvL (dB)	-2.88	4.93	2.11	-2.01	38.7
ppN (m/s)	-12.85	12.67	-0.07	4.16	
ppT (m/s)	-101.5	100.12	-0.54	32.85	
hh/vv (dB)	NaN	76.53	29.03	52.59	2268
vh/hh (dB)	NaN	-28.80	-34.50	-35.84	73.5
hv/vv (dB)	NaN	-34.94	-61.12	-47.33	2392
hn_jmp (dB)			0.16		
vn_jmp (dB)			0.16		



CIFEX 2004 Data (cal/250ns+2.5/100ns-3.5/500ns: 61.0,58.0)

W2004-04-20-14-54-12 - PPMAG4, IRIG:1/0/0  
 UTC: 14:54:12.67 to 15:09:57.79, Dur: 945s  
 TimeLngth: 945.11s, TimeInt: 28ms (35.5pps)  
 TimeCor=-13.0s, PPS(min,max,med): 35,36,35  
 Timeint/DSPdiff(mn,min,mx):28,28,28/28,28,28  
 Prof: 282 to 33788, NumProf(r/t): 15935/33506  
 ProcTime/Recs: 15:02:28-15:09:57/17571-33505  
 ADacqtime: 25ms; DRate: 198.4KB/s; Flags: 0, 0, 0  
 Pulse: 275ns, IFfilt: 5.0MHz; ppPol: HH HV VV  
 TxPol: HHVV, PRF: 20 10 20 10 kHz, Noiseflg:4,2  
 Range: Delay 75m, Spacing 15m, Gates 100  
 Ave. Pulses: 84, Rng/Prof Aspect@90m/s: 5.9

	Min	Max	Mean	Std	Varc%
hhN (dB)	-67.43	-64.08	-65.66	-75.67	10.0
vvN (dB)	-67.59	-64.23	-65.72	-75.76	9.9
hhL (dB)	-19.64	-4.16	-12.55	-11.03	142.
vvL (dB)	-2.88	4.93	2.11	-2.01	38.7
ppN (m/s)	-12.85	12.67	-0.07	4.16	
ppT (m/s)	-101.5	100.12	-0.54	32.85	
hh/vv (dB)	NaN	76.53	29.03	52.59	2268
vh/hh (dB)	NaN	-28.80	-34.50	-35.84	73.5
hv/vv (dB)	NaN	-34.94	-61.12	-47.33	2392
hh_jmp (dB)			0.16		
vv_jmp (dB)			0.16		



CIFEX 2004 Data (cal/250ns+2.5/100ns-3.5/500ns: 61.0,58.0)

W2004-04-20-14-54-12 - PPMAG4, IRIG:1/0/0  
 UTC: 14:54:12.67 to 15:09:57.79, Dur: 945s  
 TimeLngth: 945.11s, TimeInt: 28ms (35.5pps)  
 TimeCor=-13.0s, PPS(min,max,med): 35,36,35  
 Timeint/DSPdiff(mn,min,mx):28,28,28/28,28,28  
 Prof: 282 to 33788, NumProf(r/t): 15935/33506  
 ProcTime/Recs: 15:02:28-15:09:57/17571-33505  
 ADacqtime: 25ms; DRate: 198.4KB/s; Flags: 0, 0, 0  
 Pulse: 275ns, IFfilt: 5.0MHz; ppPol: HH HV VV  
 TxPol: HHVV, PRF: 20 10 20 10 kHz, Noiseflg:4,2  
 Range: Delay 75m, Spacing 15m, Gates 100  
 Ave. Pulses: 84, Rng/Prof Aspect@90m/s: 5.9

	Min	Max	Mean	Std	Varc%
hhN(dB)	-67.43	-64.08	-65.66	-75.67	10.0
vvN(dB)	-67.59	-64.23	-65.72	-75.76	9.9
hhL(dB)	-19.64	-4.16	-12.55	-11.03	142.
vvL(dB)	-2.88	4.93	2.11	-2.01	38.7
ppN(m/s)	-12.85	12.67	-0.07	4.16	
ppT(m/s)	-101.5	100.12	-0.54	32.85	
hh/vv(dB)	NaN	76.53	29.03	52.59	2268
vh/hh(dB)	NaN	-28.80	-34.50	-35.84	73.5
hv/vv(dB)	NaN	-34.94	-61.12	-47.33	2392
hnjmp(dB)			0.16		
vnjmp(dB)			0.16		