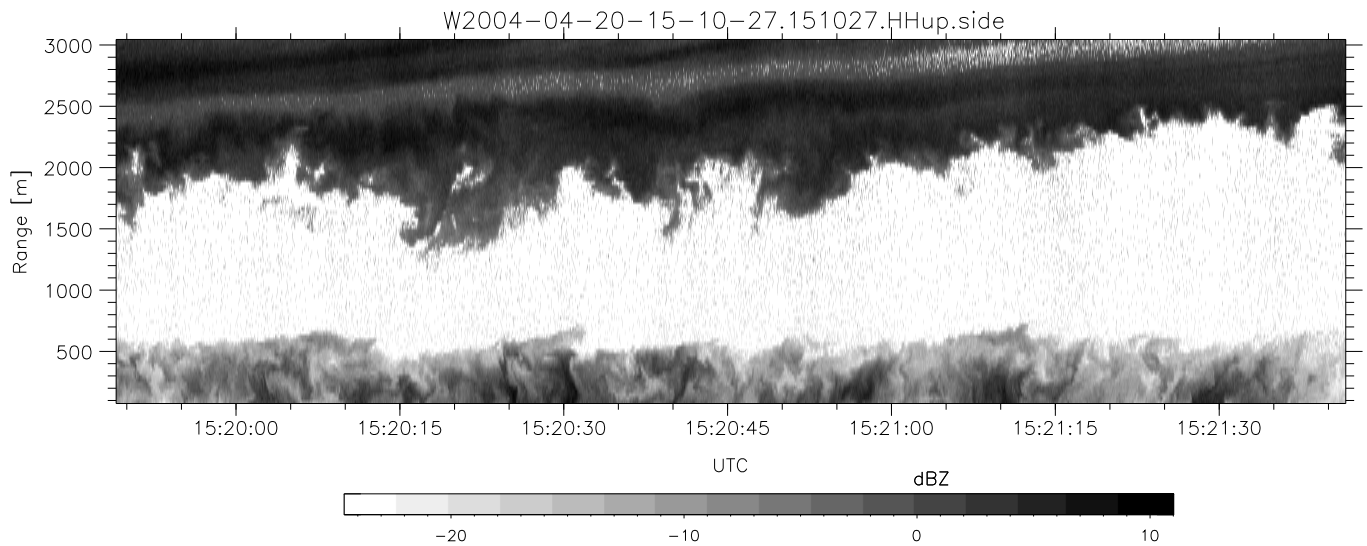
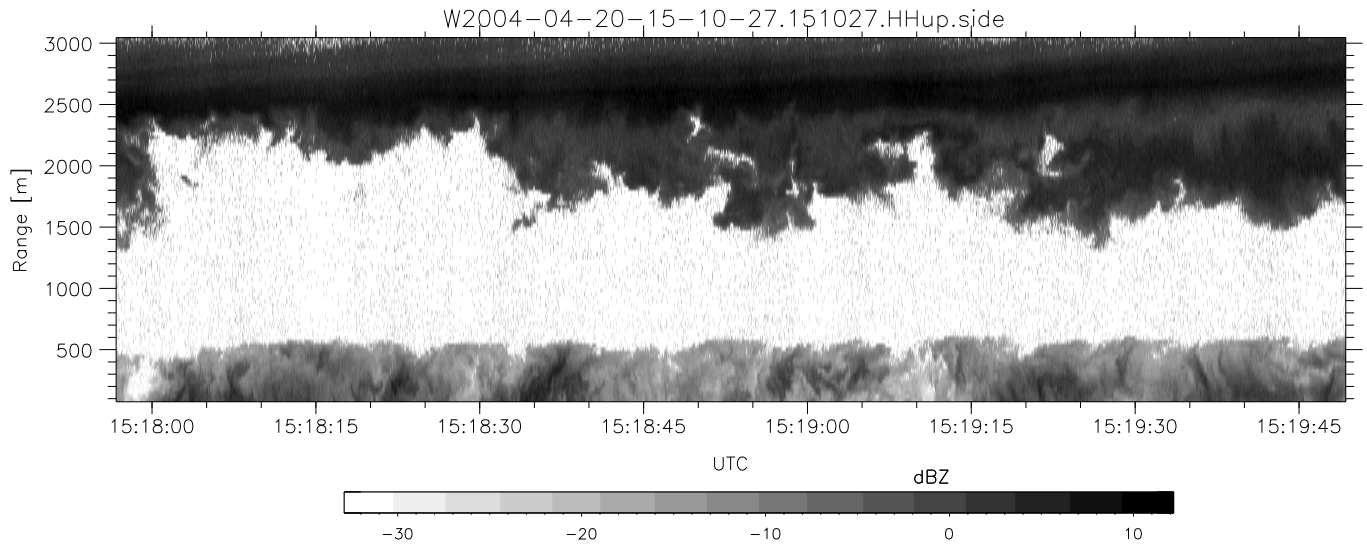
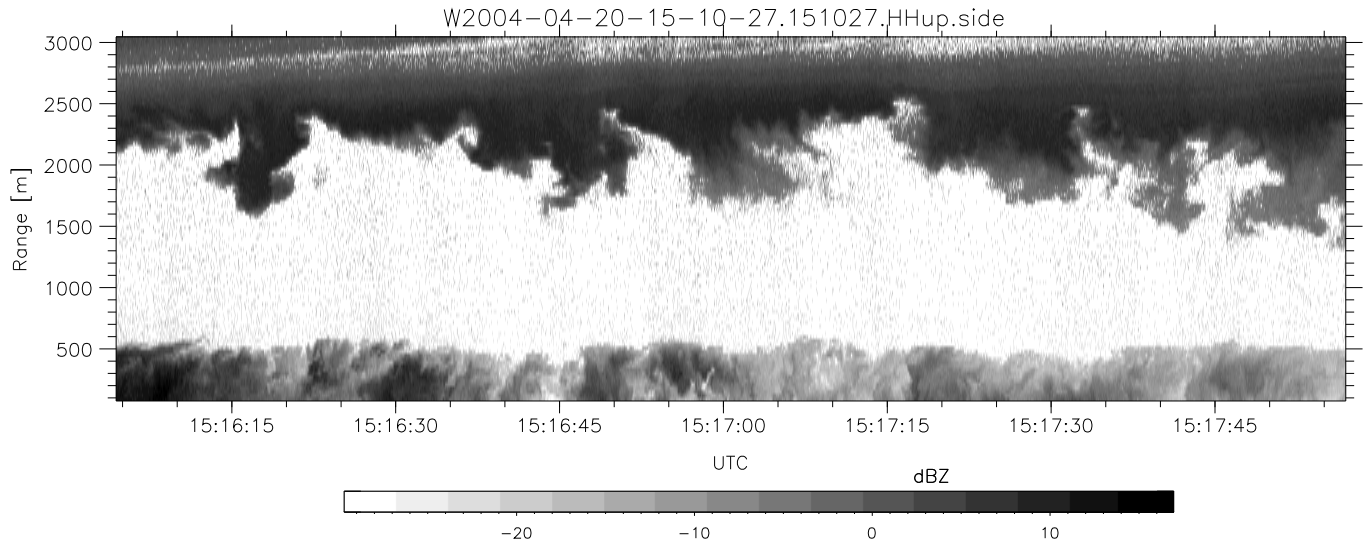


CIFEX 2004 Data (cal/250ns+2.5/100ns-3.5/500ns: 61.0,58.0)

W2004-04-20-15-10-27 - PPMAG4, IRIG:1/0/0
 UTC: 15:10:27.51 to 15:50:09.78, Dur: 2382s
 TimeLngth: 2382.25s, TimeInt: 28ms (35.4pps)
 TimeCor=-13.0s, PPS(min,max,med): 35,36,35
 Timeint/DSPdiff(mn,min,mx):28,28,28/28,28,28
 Prof: 313 to 84737, NumProf(r/t): 35142/84424
 ProcTime/Recs: 15:10:27-15:26:59/0-35141
 ADacqtime: 25ms; DRate: 198.4KB/s; Flags: 0, 0, 0
 Pulse: 275ns, IFfilt: 5.0MHz; ppPol: HH HV VV
 TxPol: HHVV, PRF: 20 10 20 10 kHz, Noiseflg:4,2
 Range: Delay 75m, Spacing 30m, Gates 100
 Ave. Pulses: 84, Rng/Prof Aspect@90m/s: 11.8

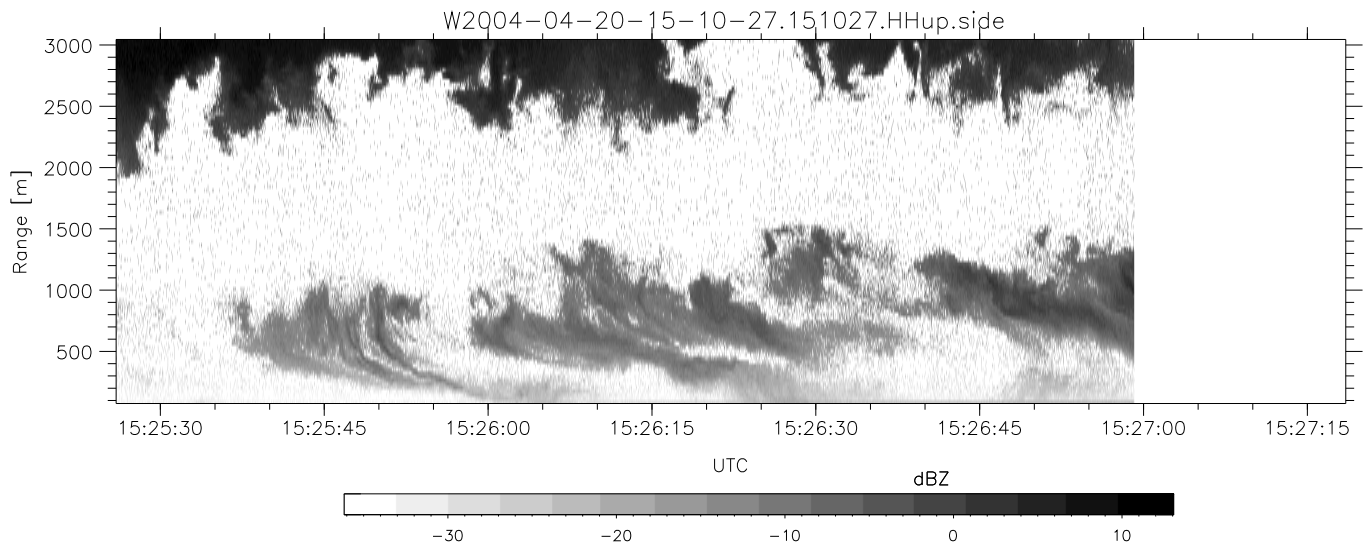
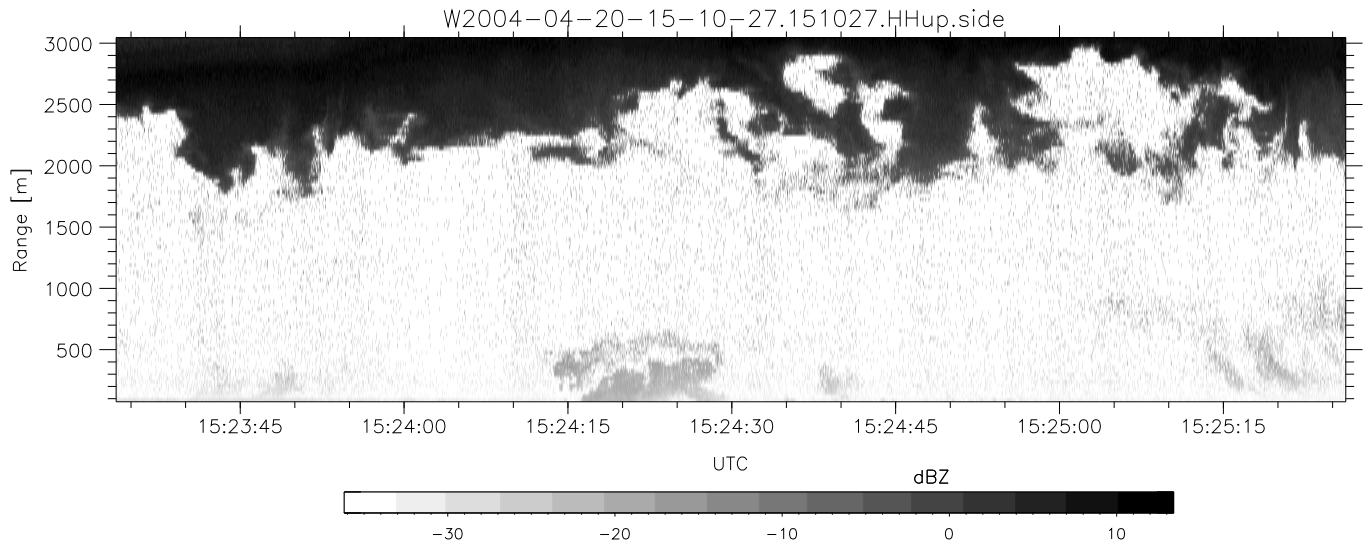
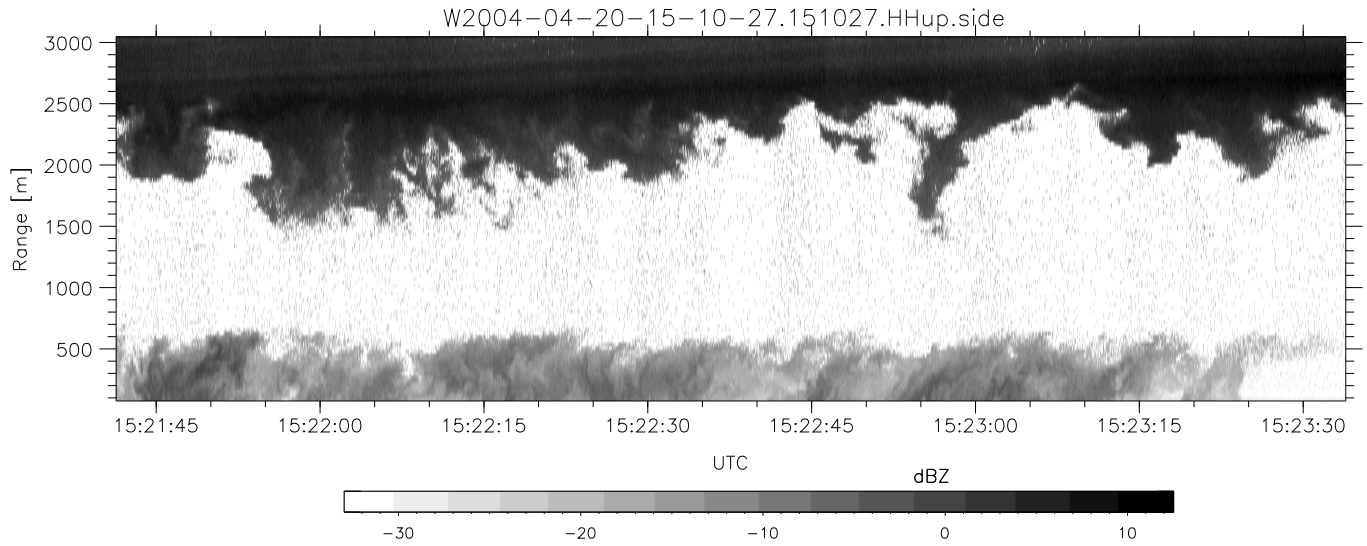
	Min	Max	Mean	Std	Varc%
hhN(dB)	-67.64	-64.27	-65.79	-75.78	10.0
vvN(dB)	-67.64	-64.09	-65.79	-75.71	10.2
hhL(dB)	-21.97	-3.94	-12.13	-12.20	98.3
vvL(dB)	-23.97	2.62	-6.21	-4.48	148.
ppN(m/s)	-12.77	12.43	-0.04	4.16	
ppT(m/s)	-100.8	98.23	-0.34	32.84	
hh/vv(dB)	NaN	57.32	12.21	33.35	1297
vh/hh(dB)	NaN	-27.22	-36.11	-36.56	90.2
hv/vv(dB)	NaN	-34.15	-49.54	-43.91	365.
hnjmp(dB)				0.16	
vnjmp(dB)				0.16	



CIFEX 2004 Data (cal/250ns+2.5/100ns-3.5/500ns: 61.0,58.0)

W2004-04-20-15-10-27 - PPMAG4, IRIG:1/0/0
 UTC: 15:10:27.51 to 15:50:09.78, Dur: 2382s
 TimeLngth: 2382.25s, TimeInt: 28ms (35.4pps)
 TimeCor=-13.0s, PPS(min,max,med): 35,36,35
 Timeint/DSPdiff(mn,min,mx):28,28,28/28,28,28
 Prof: 313 to 84737, NumProf(r/t): 35142/84424
 ProcTime/Recs: 15:10:27-15:26:59/0-35141
 ADacqtime: 25ms; DRate: 198.4KB/s; Flags: 0, 0, 0
 Pulse: 275ns, IFilt: 5.0MHz; ppPol: HH HV VV
 TxPol: HHVV, PRF: 20 10 20 10 kHz, Noiseflg:4,2
 Range: Delay 75m, Spacing 30m, Gates 100
 Ave. Pulses: 84, Rng/Prof Aspect@90m/s: 11.8

	Min	Max	Mean	Std	Varc%
hhN(dB)	-67.64	-64.27	-65.79	-75.78	10.0
vvN(dB)	-67.64	-64.09	-65.79	-75.71	10.2
hhL(dB)	-21.97	-3.94	-12.13	-12.20	98.3
vvL(dB)	-23.97	2.62	-6.21	-4.48	148.
ppN(m/s)	-12.77	12.43	-0.04	4.16	
ppT(m/s)	-100.8	98.23	-0.34	32.84	
hh/vv(dB)	NaN	57.32	12.21	33.35	1297
vh/hh(dB)	NaN	-27.22	-36.11	-36.56	90.2
hv/vv(dB)	NaN	-34.15	-49.54	-43.91	365.
hnjmp(dB)				0.16	
vnjmp(dB)				0.16	



CIFEX 2004 Data (cal/250ns+2.5/100ns-3.5/500ns: 61.0,58.0)

W2004-04-20-15-10-27 - PPMAG4, IRIG:1/0/0
 UTC: 15:10:27.51 to 15:50:09.78, Dur: 2382s
 TimeLngth: 2382.25s, TimeInt: 28ms (35.4pps)
 TimeCor=-13.0s, PPS(min,max,med): 35,36,35
 Timeint/DSPdiff(mn,min,mx):28,28,28/28,28,28
 Prof: 313 to 84737, NumProf(r/t): 35142/84424
 ProcTime/Recs: 15:10:27-15:26:59/0-35141
 ADacqtime: 25ms; DRate: 198.4KB/s; Flags: 0, 0, 0
 Pulse: 275ns, IFfilt: 5.0MHz; ppPol: HH HV VV
 TxPol: HHVV, PRF: 20 10 20 10 kHz, NoiseFlg:4,2
 Range: Delay 75m, Spacing 30m, Gates 100
 Ave. Pulses: 84, Rng/Prof Aspect@90m/s: 11.8

	Min	Max	Mean	Std	Varc%
hhN (dB)	-67.64	-64.27	-65.79	-75.78	10.0
vvN (dB)	-67.64	-64.09	-65.79	-75.71	10.2
hhL (dB)	-21.97	-3.94	-12.13	-12.20	98.3
vvL (dB)	-23.97	2.62	-6.21	-4.48	148.
ppN (m/s)	-12.77	12.43	-0.04	4.16	
ppT (m/s)	-100.8	98.23	-0.34	32.84	
hh/vv (dB)	NaN	57.32	12.21	33.35	1297
vh/hh (dB)	NaN	-27.22	-36.11	-36.56	90.2
hv/vv (dB)	NaN	-34.15	-49.54	-43.91	365.
hh_jmp (dB)			0.16		
vv_jmp (dB)			0.16		