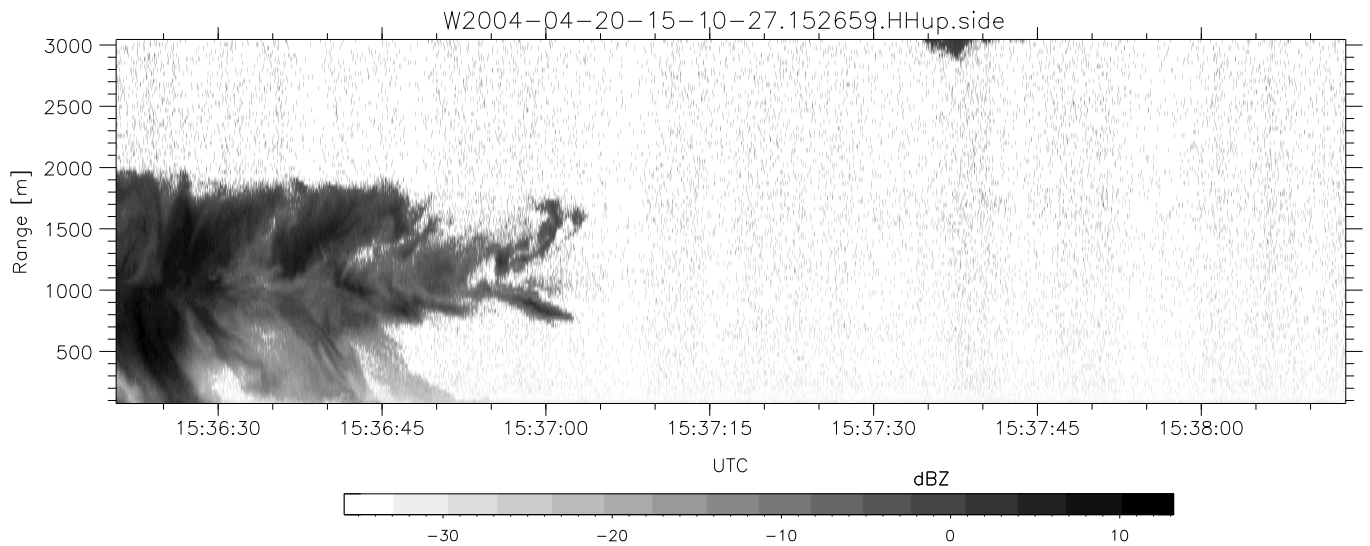
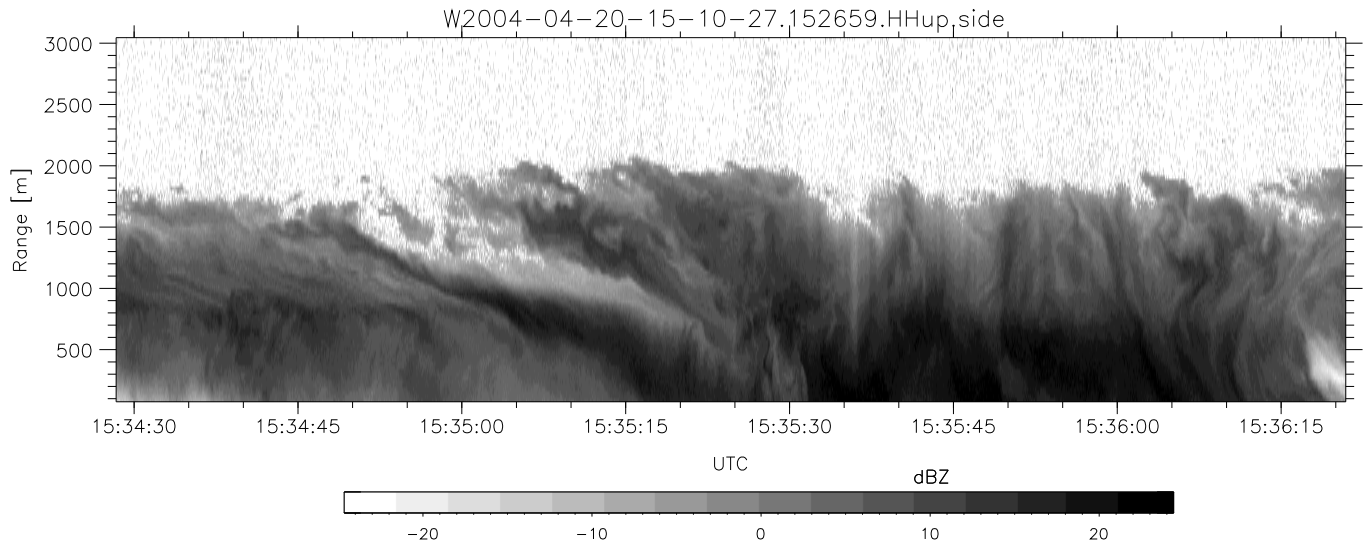
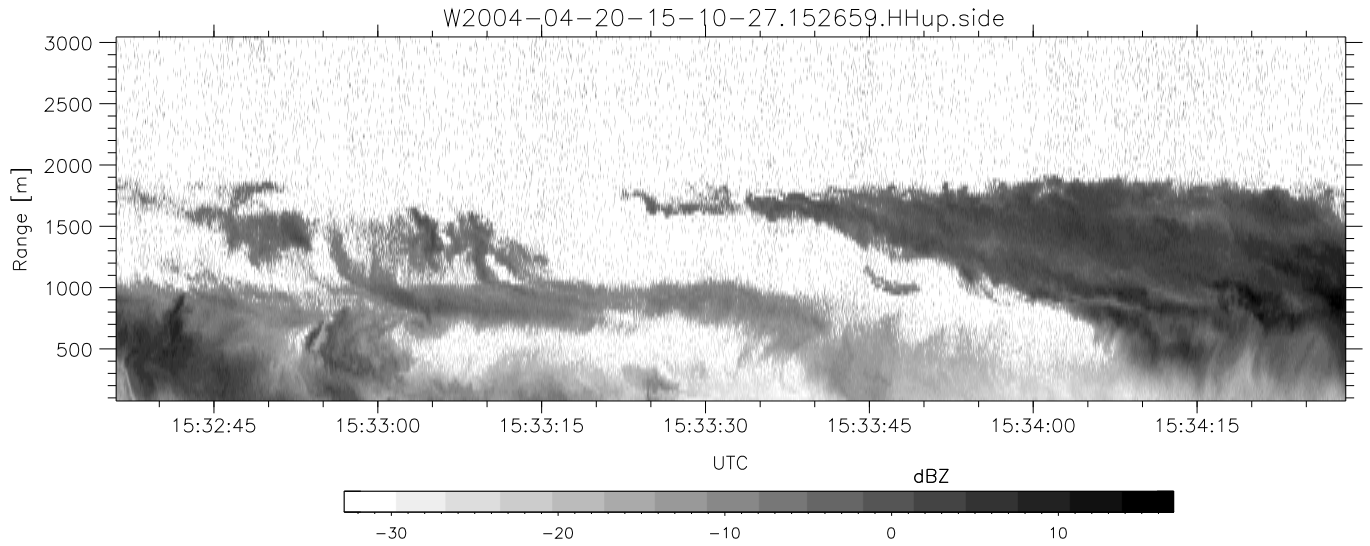


CIFEX 2004 Data (cal/250ns+2.5/100ns-3.5/500ns: 61.0,58.0)

W2004-04-20-15-10-27 - PPMAG4, IRIG:1/0/0
 UTC: 15:10:27.51 to 15:50:09.78, Dur: 2382s
 TimeLngth: 2382.25s, TimeInt: 28ms (35.4pps)
 TimeCor=-13.0s, PPS(min,max,med): 35,36,35
 Timeint/DSPdiff(mn,min,mx):28,28,38/28,28,38
 Prof: 313 to 84737, NumProf(r/t): 35142/84424
 ProcTime/Recs: 15:26:59-15:43:30/35142-70283
 ADacqtime: 25ms; DRate: 198.4KB/s; Flags: 0, 0, 0
 Pulse: 275ns, IFilt: 5.0MHz; ppPol: HH HV VV
 TxPol: HHVV, PRF: 20 10 20 10 kHz, NoiseFlg:4,2
 Range: Delay 75m, Spacing 30m, Gates 100
 Ave. Pulses: 84, Rng/Prof Aspect@90m/s: 11.8

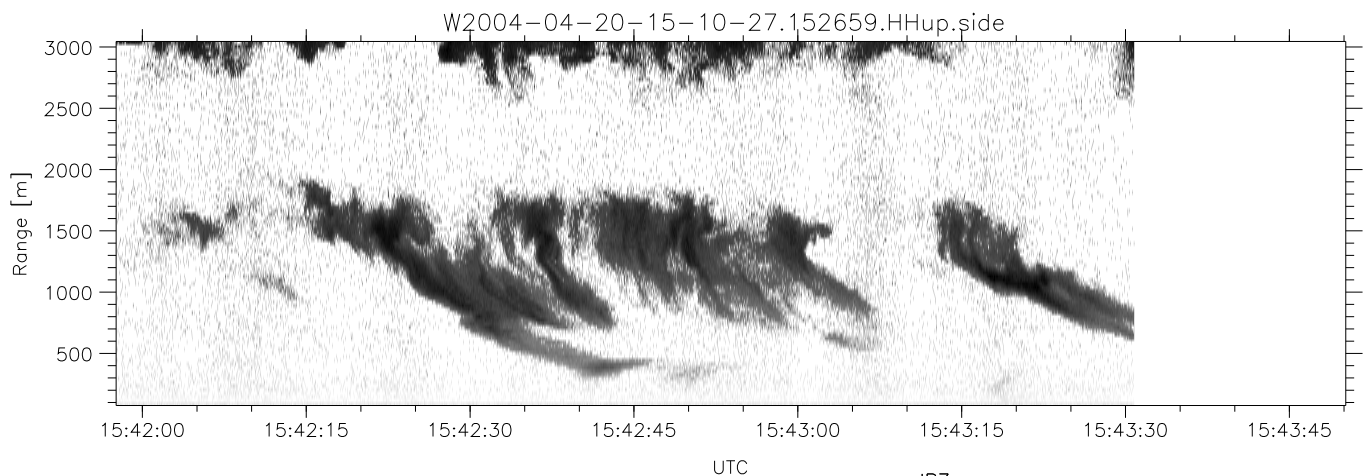
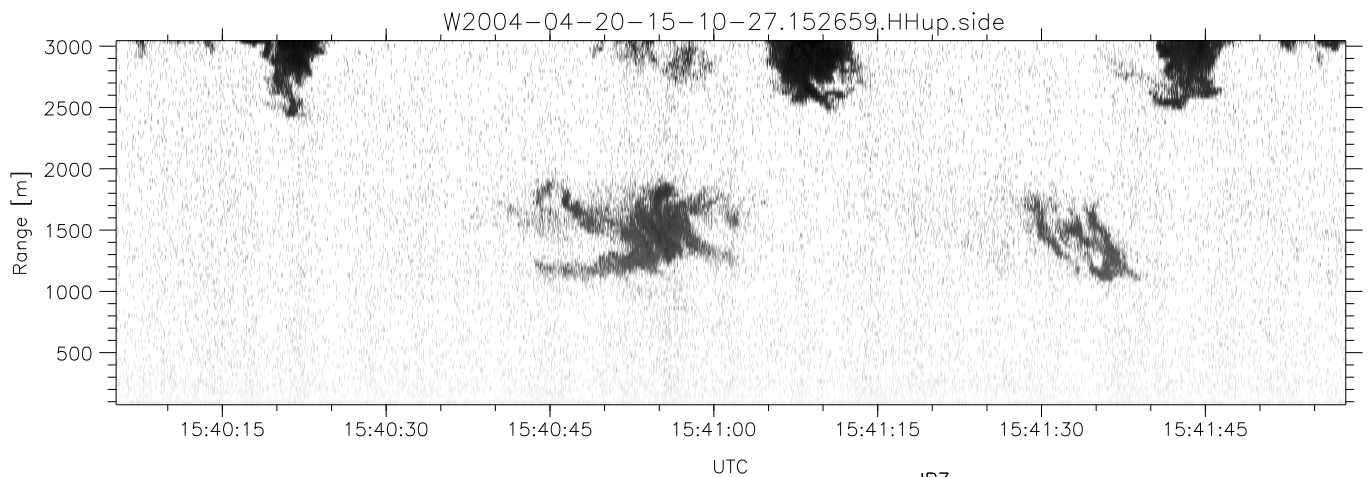
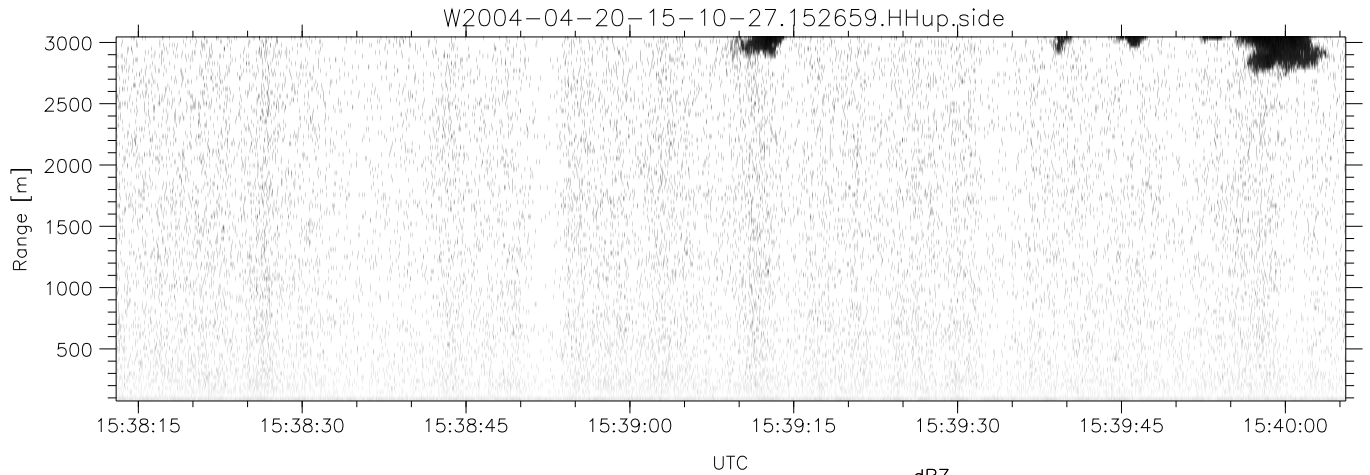
	Min	Max	Mean	Std	Varc%
hhN (dB)	-67.62	-64.12	-65.87	-75.87	10.0
vvN (dB)	-67.84	-64.28	-65.95	-75.90	10.1
hhL (dB)	-19.31	-5.07	-12.89	-12.26	115.
vvL (dB)	-4.25	2.35	-0.22	-7.45	18.9
ppN (m/s)	-12.89	12.77	0.01	4.14	
ppT (m/s)	-101.8	100.90	0.11	32.69	
hh/vv (dB)	NaN	73.00	23.16	46.01	1925
vh/hh (dB)	NaN	-8.56	-30.31	-23.66	461.
hv/vv (dB)	NaN	-32.56	-51.39	-45.47	390.
hn_jmp (dB)				0.16	
vn_jmp (dB)				0.16	



CIFEX 2004 Data (cal/250ns+2.5/100ns-3.5/500ns: 61.0,58.0)

W2004-04-20-15-10-27 - PPMAG4, IRIG:1/0/0
 UTC: 15:10:27.51 to 15:50:09.78, Dur: 2382s
 TimeLngth: 2382.25s, TimeInt: 28ms (35.4pps)
 TimeCor=-13.0s, PPS(min,max,med): 35,36,35
 Timeint/DSPdiff(mn,min,mx):28,28,38/28,28,38
 Prof: 313 to 84737, NumProf(r/t): 35142/84424
 ProcTime/Recs: 15:26:59-15:43:30/35142-70283
 ADacqtime: 25ms; DRate: 198.4KB/s; Flags: 0, 0, 0
 Pulse: 275ns, IFilt: 5.0MHz; ppPol: HH HV VV
 TxPol: HHVV, PRF: 20 10 20 10 kHz, NoiseFlg:4,2
 Range: Delay 75m, Spacing 30m, Gates 100
 Ave. Pulses: 84, Rng/Prof Aspect@90m/s: 11.8

	Min	Max	Mean	Std	Varc%
hhN (dB)	-67.62	-64.12	-65.87	-75.87	10.0
vvN (dB)	-67.84	-64.28	-65.95	-75.90	10.1
hhL (dB)	-19.31	-5.07	-12.89	-12.26	115.5
vvL (dB)	-4.25	2.35	-0.22	-7.45	18.9
ppN (m/s)	-12.89	12.77	0.01	4.14	
ppT (m/s)	-101.8	100.90	0.11	32.69	
hh/vv (dB)	NaN	73.00	23.16	46.01	1925
vh/hh (dB)	NaN	-8.56	-30.31	-23.66	461.5
hv/vv (dB)	NaN	-32.56	-51.39	-45.47	390.5
hh_jmp (dB)				0.16	
vv_jmp (dB)				0.16	



CIFEX 2004 Data (cal/250ns+2.5/100ns-3.5/500ns: 61.0,58.0)

W2004-04-20-15-10-27 - PPMAG4, IRIG:1/0/0
 UTC: 15:10:27.51 to 15:50:09.78, Dur: 2382s
 TimeLngth: 2382.25s, TimeInt: 28ms (35.4pps)
 TimeCor=-13.0s, PPS(min,max,med): 35,36,35
 Timeint/DSPdiff(mn,min,mx):28,28,38/28,28,38
 Prof: 313 to 84737, NumProf(r/t): 35142/84424
 ProcTime/Recs: 15:26:59-15:43:30/35142-70283
 ADacqtime: 25ms; DRate: 198.4KB/s; Flags: 0, 0, 0
 Pulse: 275ns, IFilt: 5.0MHz; ppPol: HH HV VV
 TxPol: HHVV, PRF: 20 10 20 10 kHz, NoiseFlg:4,2
 Range: Delay 75m, Spacing 30m, Gates 100
 Ave. Pulses: 84, Rng/Prof Aspect@90m/s: 11.8

	Min	Max	Mean	Std	Varc%
hhN(dB)	-67.62	-64.12	-65.87	-75.87	10.0
vvN(dB)	-67.84	-64.28	-65.95	-75.90	10.1
hhL(dB)	-19.31	-5.07	-12.89	-12.26	115.
vvL(dB)	-4.25	2.35	-0.22	-7.45	18.9
ppN(m/s)	-12.89	12.77	0.01	4.14	
ppT(m/s)	-101.8	100.90	0.11	32.69	
hh/vv(dB)	NaN	73.00	23.16	46.01	1925
vh/hh(dB)	NaN	-8.56	-30.31	-23.66	461.
hv/vv(dB)	NaN	-32.56	-51.39	-45.47	390.
hnjmp(dB)				0.16	
vnjmp(dB)				0.16	