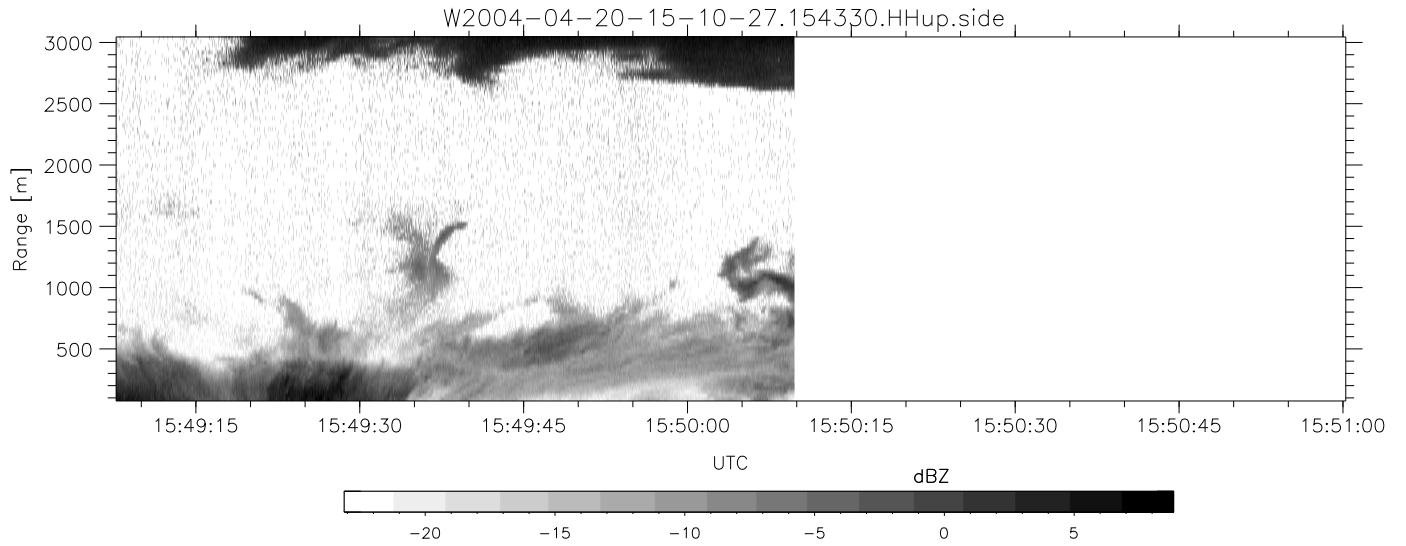


CIFEX 2004 Data (cal/250ns+2.5/100ns-3.5/500ns: 61.0,58.0)

W2004-04-20-15-10-27 - PPMAG4, IRIG:1/0/0
 UTC: 15:10:27.51 to 15:50:09.78, Dur: 2382s
 TimeLngth: 2382.25s, TimeInt: 28ms (35.4pps)
 TimeCor=-13.0s, PPS(min,max,med): 35,36,35
 Timeint/DSPdiff(mn,min,mx):28,28,29/28,28,29
 Prof: 313 to 84737, NumProf(r/t): 14140/84424
 ProcTime/Recs: 15:43:30-15:50:09/70284-84423
 ADacqtime: 25ms; DRate: 198.4KB/s; Flags: 0, 0, 0
 Pulse: 275ns, IFilt: 5.0MHz; ppPol: HH HV VV
 TxPol: HHVV, PRF: 20 10 20 10 kHz, NoiseFlg:4,2
 Range: Delay 75m, Spacing 30m, Gates 100
 Ave. Pulses: 84, Rng/Prof Aspect@90m/s: 11.8

	Min	Max	Mean	Std	Varc%
hhN(dB)	-67.56	-64.45	-65.98	-76.02	9.9
vvN(dB)	-68.14	-64.45	-66.05	-76.05	10.0
hhL(dB)	-18.28	-13.25	-15.26	-23.82	13.9
vvL(dB)	-2.98	1.33	-0.18	-8.31	15.4
ppN(m/s)	-12.34	12.74	0.02	4.13	
ppT(m/s)	-97.49	100.61	0.19	32.64	
hh/vv(dB)	NaN	61.97	19.54	42.65	2046
vh/hh(dB)	NaN	-6.24	-27.92	-19.80	649.
hv/vv(dB)	NaN	-34.86	-55.30	-46.24	805.
hh_jmp(dB)				0.16	
vv_jmp(dB)				0.17	



CIFEX 2004 Data (cal/250ns+2.5/100ns-3.5/500ns: 61.0,58.0)

W2004-04-20-15-10-27 - PPMAG4, IRIG:1/0/0
 UTC: 15:10:27.51 to 15:50:09.78, Dur: 2382s
 TimeLngth: 2382.25s, TimeInt: 28ms (35.4pps)
 TimeCor=-13.0s, PPS(min,max,med): 35,36,35
 Timeint/DSPdiff(mn,min,mx):28,28,29/28,28,29
 Prof: 313 to 84737, NumProf(r/t): 14140/84424
 ProcTime/Recs: 15:43:30-15:50:09/70284-84423
 ADacqtime: 25ms; DRate: 198.4KB/s; Flags: 0, 0, 0
 Pulse: 275ns, IFilt: 5.0MHz; ppPol: HH HV VV
 TxPol: HHVV, PRF: 20 10 20 10 kHz, NoiseFlg:4,2
 Range: Delay 75m, Spacing 30m, Gates 100
 Ave. Pulses: 84, Rng/Prof Aspect@90m/s: 11.8

	Min	Max	Mean	Std	Varc%
hhN(dB)	-67.56	-64.45	-65.98	-76.02	9.9
vvN(dB)	-68.14	-64.45	-66.05	-76.05	10.0
hhL(dB)	-18.28	-13.25	-15.26	-23.82	13.9
vvL(dB)	-2.98	1.33	-0.18	-8.31	15.4
ppN(m/s)	-12.34	12.74	0.02	4.13	
ppT(m/s)	-97.49	100.61	0.19	32.64	
hh/vv(dB)	NaN	61.97	19.54	42.65	2046
vh/hh(dB)	NaN	-6.24	-27.92	-19.80	649.
hv/vv(dB)	NaN	-34.86	-55.30	-46.24	805.
hnjmp(dB)			0.16		
vnjmp(dB)			0.17		