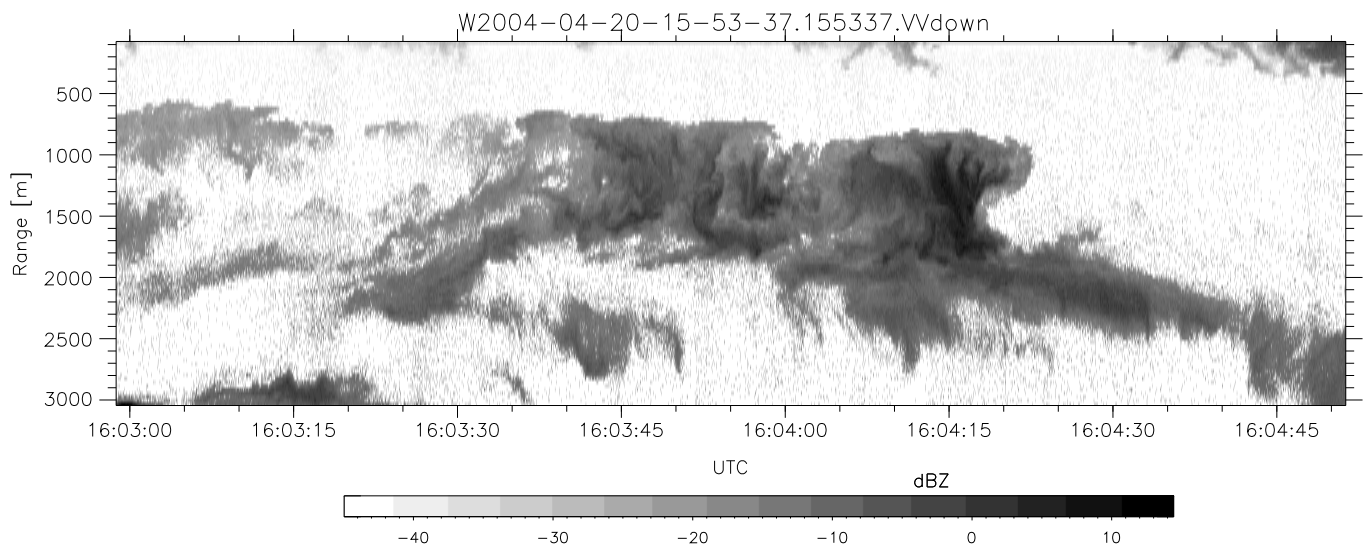
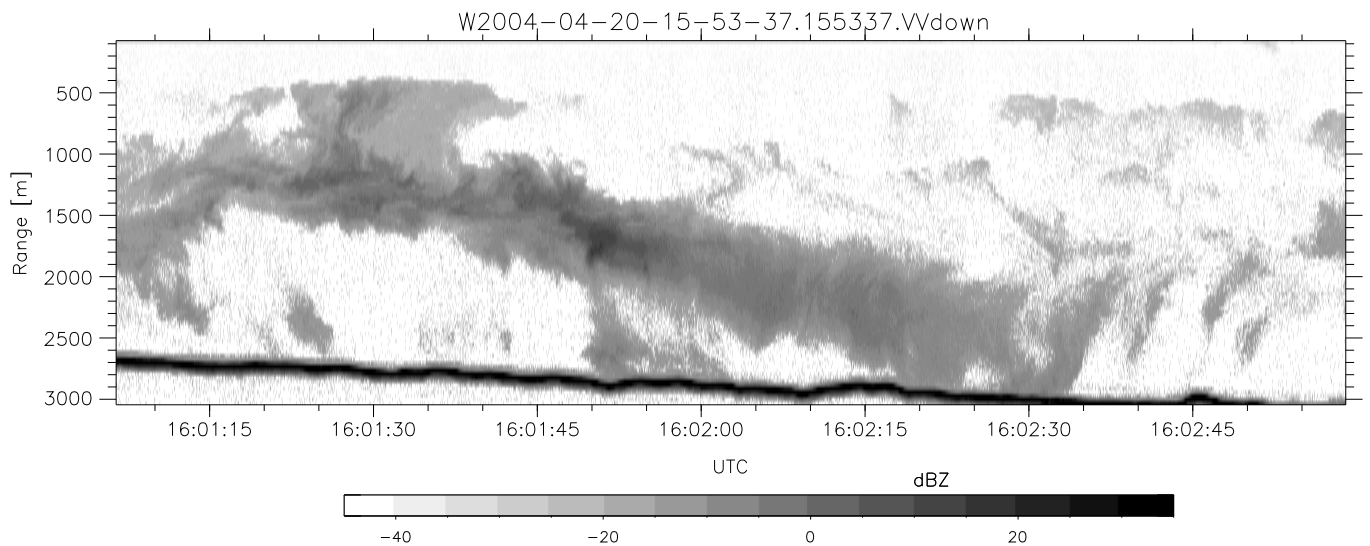
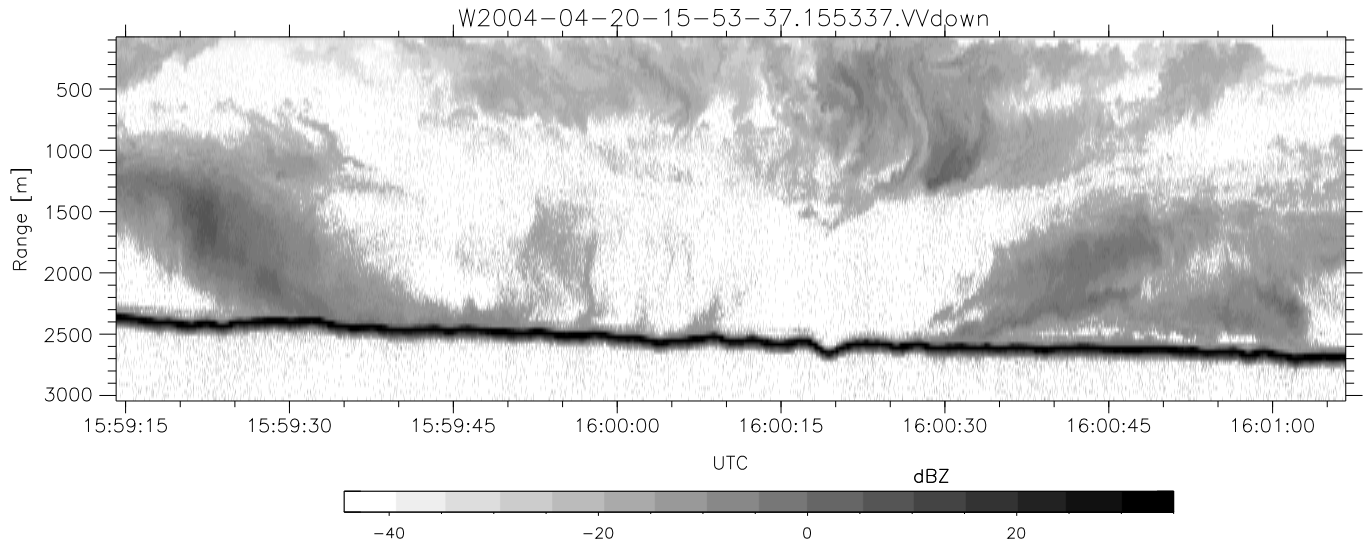


CIFEX 2004 Data (cal/250ns+2.5/100ns-3.5/500ns: 53.0,50.0)

W2004-04-20-15-53-37 - PPMAG4, IRIG:1/0/0
 UTC: 15:53:37.23 to 16:38:56.62, Dur: 2719s
 TimeLngth: 2719.37s, TimeInt: 28ms (35.4pps)
 TimeCor=-13.0s, PPS(min,max,med): 35,36,35
 Timeint/DSPdiff(mn,min,mx):28,28,31/28,28,31
 Prof: 3677 to 100048, NumProf(r/t): 35142/96371
 ProcTime/Recs: 15:53:37-16:10:08/0-35141
 ADacqtime: 25ms; DRate: 198.4KB/s; Flags: 0, 0, 0
 Pulse: 275ns, IFfilt: 5.0MHz; ppPol: HH HV VV
 TxPol: HHVV, PRF: 20 10 20 10 kHz, NoiseFlg:1,2
 Range: Delay 75m, Spacing 30m, Gates 100
 Ave. Pulses: 84, Rng/Prof Aspect@90m/s: 11.8

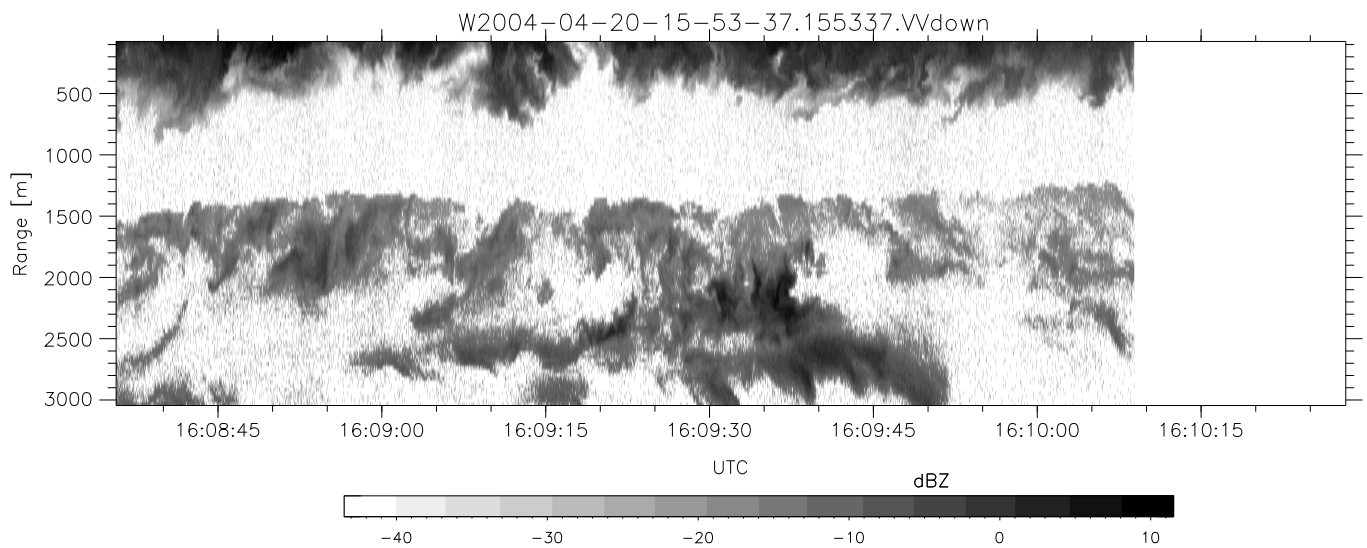
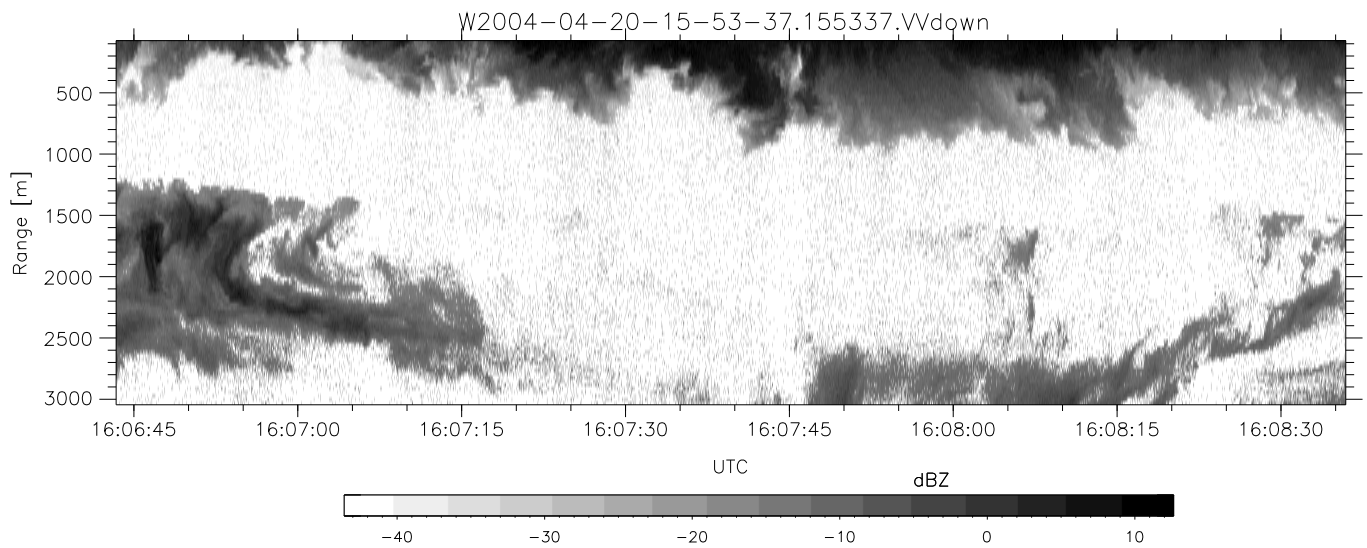
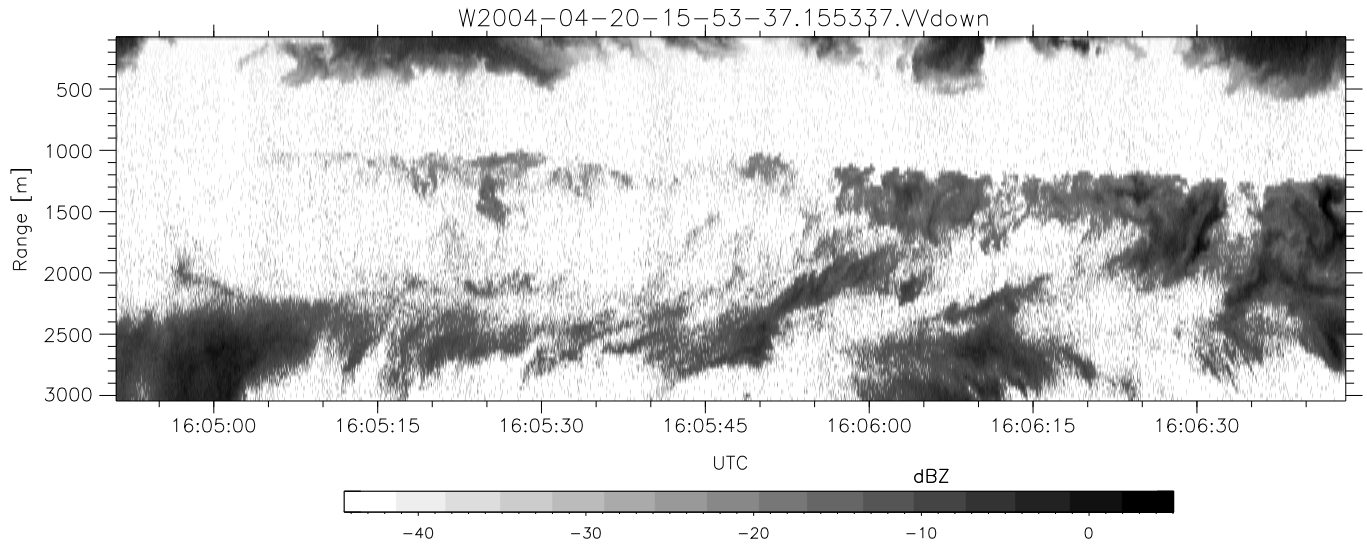
	Min	Max	Mean	Std	Varc%
hhN(dB)	-68.26	-64.41	-66.03	-76.05	10.0
vvN(dB)	-68.14	-64.42	-66.21	-76.13	10.2
hhL(dB)	-18.04	2.64	-1.30	-3.12	65.7
vvL(dB)	-17.13	6.00	-0.39	-0.25	103.
ppN(m/s)	-12.47	12.43	-0.04	4.13	
ppT(m/s)	-98.49	98.23	-0.35	32.66	
hh/vv(dB)	NaN	Inf	Inf	-NaN	-NaN
vh/hh(dB)	NaN	-29.12	-44.03	-37.94	406.
hv/vv(dB)	NaN	-33.31	-47.88	-43.21	292.
hnjmp(dB)			0.17		
vnjmp(dB)			0.17		



CIFEX 2004 Data (cal/250ns+2.5/100ns-3.5/500ns: 53.0,50.0)

W2004-04-20-15-53-37 - PPMAG4, IRIG:1/0/0
 UTC: 15:53:37.23 to 16:38:56.62, Dur: 2719s
 TimeLngth: 2719.37s, TimeInt: 28ms (35.4pps)
 TimeCor=-13.0s, PPS(min,max,med): 35,36,35
 Timeint/DSPdiff(mn,min,mx):28,28,31/28,28,31
 Prof: 3677 to 100048, NumProf(r/t): 35142/96371
 ProcTime/Recs: 15:53:37-16:10:08/0-35141
 ADacqtime: 25ms; DRate: 198.4KB/s; Flags: 0, 0, 0
 Pulse: 275ns, IFilt: 5.0MHz; ppPol: HH HV VV
 TxPol: HHV, PRF: 20 10 20 10 kHz, NoiseFlg:1,2
 Range: Delay 75m, Spacing 30m, Gates 100
 Ave. Pulses: 84, Rng/Prof Aspect@90m/s: 11.8

	Min	Max	Mean	Std	Varc%
hhN (dB)	-68.26	-64.41	-66.03	-76.05	10.0
vvN (dB)	-68.14	-64.42	-66.21	-76.13	10.2
hhL (dB)	-18.04	2.64	-1.30	-3.12	65.7
vvL (dB)	-17.13	6.00	-0.39	-0.25	103.
ppN (m/s)	-12.47	12.43	-0.04	4.13	
ppT (m/s)	-98.49	98.23	-0.35	32.66	
hh/vv (dB)	NaN	Inf	Inf	-NaN	-NaN
vh/hh (dB)	NaN	-29.12	-44.03	-37.94	406.
hv/vv (dB)	NaN	-33.31	-47.88	-43.21	292.
hnjmp (dB)			0.17		
vnjmp (dB)			0.17		



CIFEX 2004 Data (cal/250ns+2.5/100ns-3.5/500ns: 53.0,50.0)

W2004-04-20-15-53-37 - PPMAG4, IRIG:1/0/0
 UTC: 15:53:37.23 to 16:38:56.62, Dur: 2719s
 TimeLngth: 2719.37s, TimeInt: 28ms (35.4pps)
 TimeCor=-13.0s, PPS(min,max,med): 35,36,35
 Timeint/DSPdiff(mn,min,mx):28,28,31/28,28,31
 Prof: 3677 to 100048, NumProf(r/t): 35142/96371
 ProcTime/Recs: 15:53:37-16:10:08/0-35141
 ADacqtime: 25ms; DRate: 198.4KB/s; Flags: 0, 0, 0
 Pulse: 275ns, IFilt: 5.0MHz; ppPol: HH HV VV
 TxPol: HHVV, PRF: 20 10 20 10 kHz, NoiseFlg:1,2
 Range: Delay 75m, Spacing 30m, Gates 100
 Ave. Pulses: 84, Rng/Prof Aspect@90m/s: 11.8

	Min	Max	Mean	Std	Varc%
hhN (dB)	-68.26	-64.41	-66.03	-76.05	10.0
vvN (dB)	-68.14	-64.42	-66.21	-76.13	10.2
hhL (dB)	-18.04	2.64	-1.30	-3.12	65.7
vvL (dB)	-17.13	6.00	-0.39	-0.25	103.
ppN (m/s)	-12.47	12.43	-0.04	4.13	
ppT (m/s)	-98.49	98.23	-0.35	32.66	
hh/vv (dB)	NaN	Inf	Inf	-NaN	-NaN
vh/hh (dB)	NaN	-29.12	-44.03	-37.94	406.
hv/vv (dB)	NaN	-33.31	-47.88	-43.21	292.
hn_jmp (dB)			0.17		
vn_jmp (dB)			0.17		