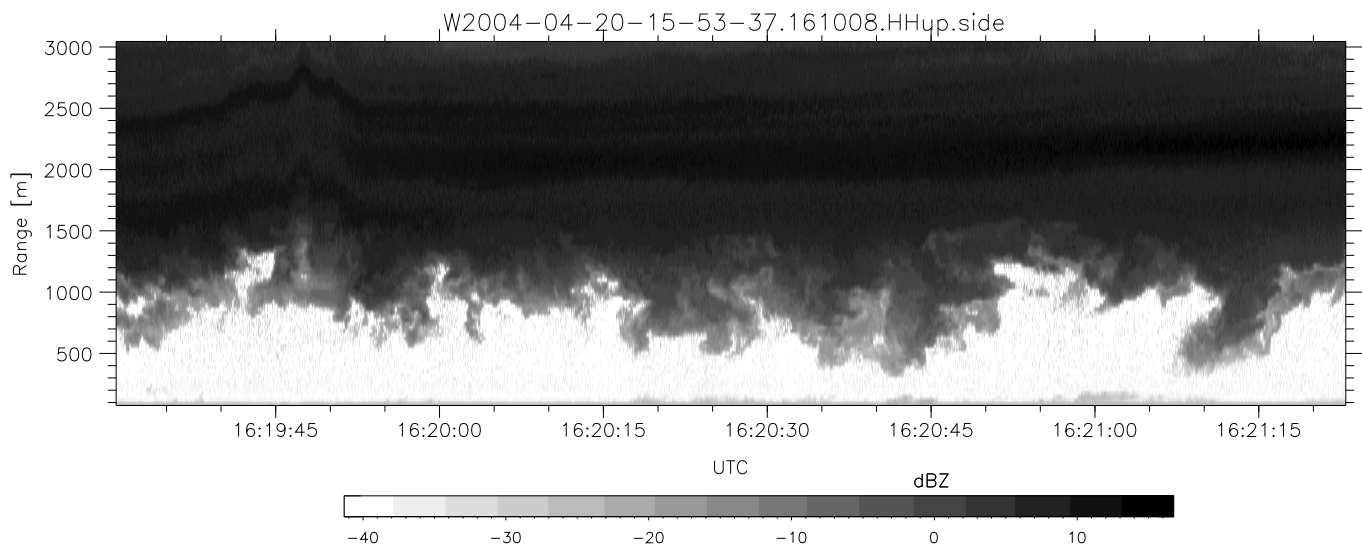
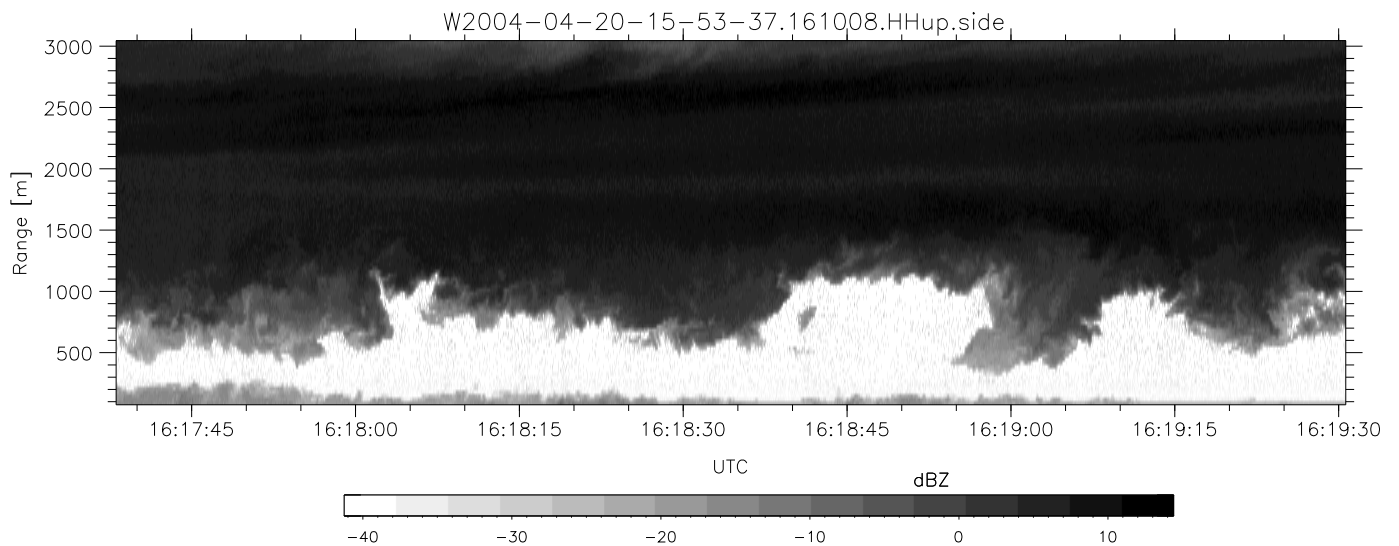
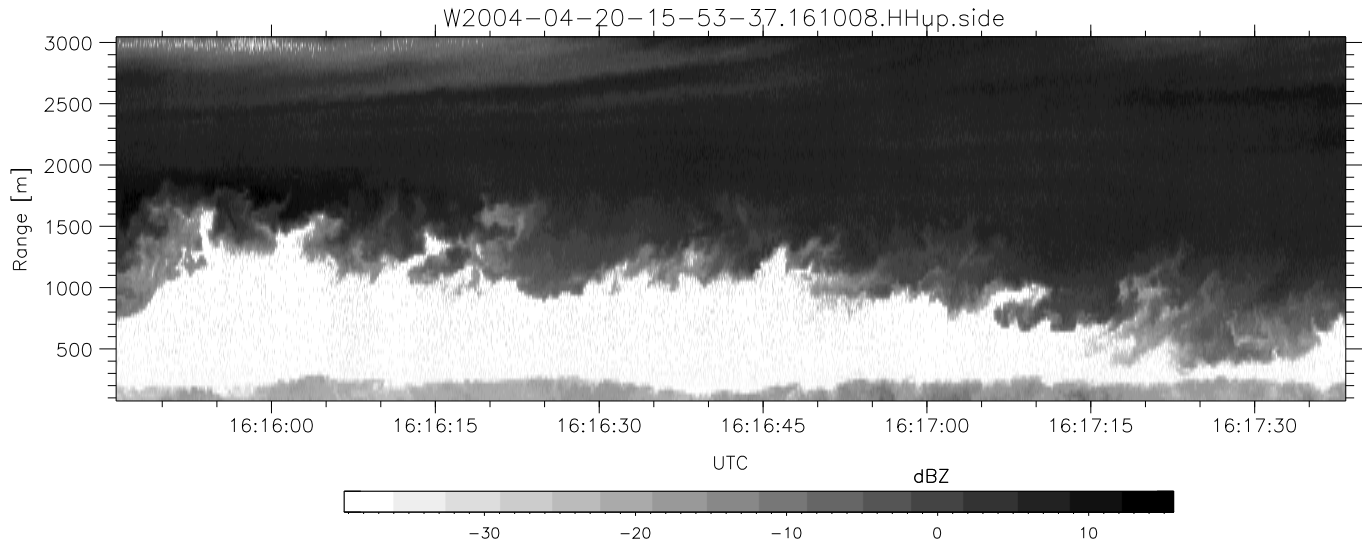


CIFEX 2004 Data (cal/250ns+2.5/100ns-3.5/500ns: 53.0,50.0)

W2004-04-20-15-53-37 - PPMAG4, IRIG:1/0/0
 UTC: 15:53:37.23 to 16:38:56.62, Dur: 2719s
 TimeLngth: 2719.37s, TimeInt: 28ms (35.4pps)
 TimeCor=-13.0s, PPS(min,max,med): 35,36,35
 Timeint/DSPdiff(mn,min,mx):28,28,32/28,28,32
 Prof: 3677 to 100048, NumProf(r/t): 35142/96371
 ProcTime/Recs: 16:10:08-16:26:40/35142-70283
 ADacqtime: 25ms; DRate: 198.4KB/s; Flags: 0, 0, 0
 Pulse: 275ns, IFilt: 5.0MHz; ppPol: HH HV VV
 TxPol: HHVV, PRF: 20 10 20 10 kHz, Noiseflg:4,2
 Range: Delay 75m, Spacing 30m, Gates 100
 Ave. Pulses: 84, Rng/Prof Aspect@90m/s: 11.8

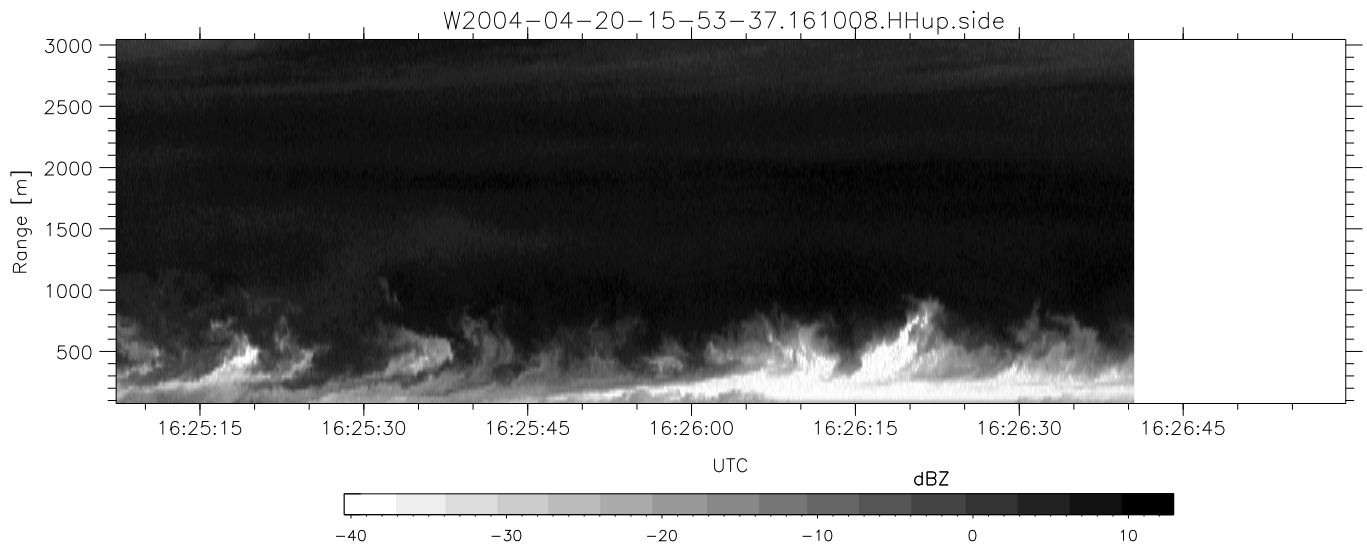
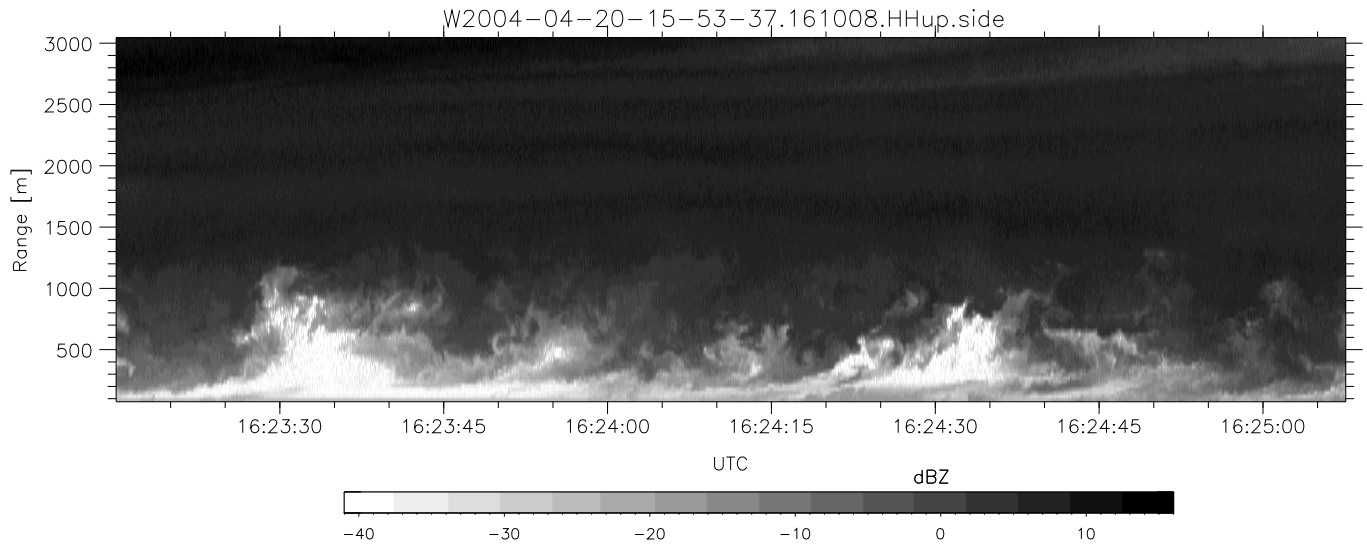
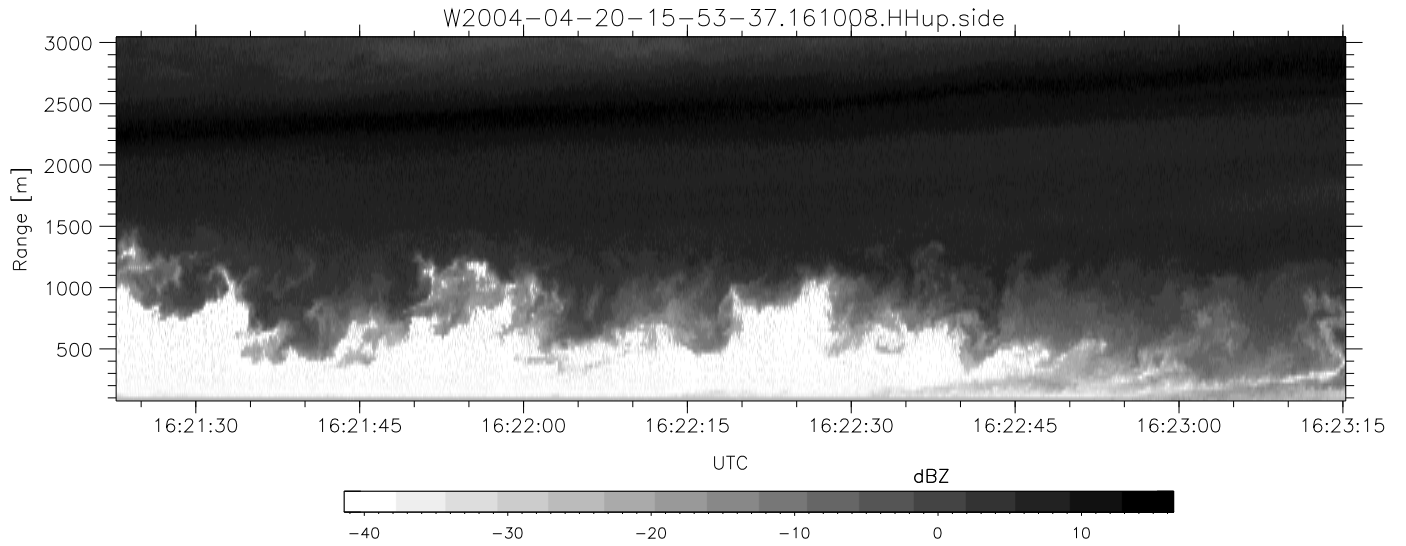
	Min	Max	Mean	Std	Varc%
hhN(dB)	-67.89	-64.45	-66.09	-76.04	10.1
vvN(dB)	-68.16	-64.65	-66.32	-76.24	10.2
hhL(dB)	-8.06	1.40	-0.69	-8.61	16.1
vvL(dB)	-16.97	4.08	-4.02	-5.73	67.5
ppN(m/s)	-12.40	12.40	-0.04	4.15	
ppT(m/s)	-97.97	97.98	-0.35	32.82	
hh/vv(dB)	NaN	Inf	Inf	-NaN	-NaN
vh/hh(dB)	NaN	-29.49	-41.86	-37.94	246.
hv/vv(dB)	NaN	-34.97	-57.84	-46.19	1462
hnjmp(dB)			0.17		
vnjmp(dB)			0.17		



CIFEX 2004 Data (cal/250ns+2.5/100ns-3.5/500ns: 53.0,50.0)

W2004-04-20-15-53-37 - PPMAG4, IRIG:1/0/0
 UTC: 15:53:37.23 to 16:38:56.62, Dur: 2719s
 TimeLngth: 2719.37s, TimeInt: 28ms (35.4pps)
 TimeCor=-13.0s, PPS(min,max,med): 35,36,35
 Timeint/DSPdiff(mn,min,mx):28,28,32/28,28,32
 Prof: 3677 to 100048, NumProf(r/t): 35142/96371
 ProcTime/Recs: 16:10:08-16:26:40/35142-70283
 ADacqtime: 25ms; DRate: 198.4KB/s; Flags: 0, 0, 0
 Pulse: 275ns, IFfilt: 5.0MHz; ppPol: HH HV VV
 TxPol: HHV, PRF: 20 10 20 10 kHz, Noiseflg:4,2
 Range: Delay 75m, Spacing 30m, Gates 100
 Ave. Pulses: 84, Rng/Prof Aspect@90m/s: 11.8

	Min	Max	Mean	Std	Varc%
hhN(dB)	-67.89	-64.45	-66.09	-76.04	10.1
vvN(dB)	-68.16	-64.65	-66.32	-76.24	10.2
hhL(dB)	-8.06	1.40	-0.69	-8.61	16.1
vvL(dB)	-16.97	4.08	-4.02	-5.73	67.5
ppN(m/s)	-12.40	12.40	-0.04	4.15	
ppT(m/s)	-97.97	97.98	-0.35	32.82	
hh/vv(dB)	NaN	Inf	Inf	-NaN	-NaN
vh/hh(dB)	NaN	-29.49	-41.86	-37.94	246.
hv/vv(dB)	NaN	-34.97	-57.84	-46.19	1462
hnjmp(dB)			0.17		
vnjmp(dB)			0.17		



CIFEX 2004 Data (cal/250ns+2.5/100ns-3.5/500ns: 53.0,50.0)

W2004-04-20-15-53-37 - PPMAG4, IRIG:1/0/0
 UTC: 15:53:37.23 to 16:38:56.62, Dur: 2719s
 TimeLngth: 2719.37s, TimeInt: 28ms (35.4pps)
 TimeCor=-13.0s, PPS(min,max,med): 35,36,35
 Timeint/DSPdiff(mn,min,mx):28,28,32/28,28,32
 Prof: 3677 to 100048, NumProf(r/t): 35142/96371
 ProcTime/Recs: 16:10:08-16:26:40/35142-70283
 ADacqtime: 25ms; DRate: 198.4KB/s; Flags: 0, 0, 0
 Pulse: 275ns, IFfilt: 5.0MHz; ppPol: HH HV VV
 TxPol: HHVV, PRF: 20 10 20 10 kHz, Noiseflg:4,2
 Range: Delay 75m, Spacing 30m, Gates 100
 Ave. Pulses: 84, Rng/Prof Aspect@90m/s: 11.8

	Min	Max	Mean	Std	Varc%
hhN (dB)	-67.89	-64.45	-66.09	-76.04	10.1
vvN (dB)	-68.16	-64.65	-66.32	-76.24	10.2
hhL (dB)	-8.06	1.40	-0.69	-8.61	16.1
vvL (dB)	-16.97	4.08	-4.02	-5.73	67.5
ppN (m/s)	-12.40	12.40	-0.04	4.15	
ppT (m/s)	-97.97	97.98	-0.35	32.82	
hh/vv (dB)	NaN	Inf	Inf	-NaN	-NaN
vh/hh (dB)	NaN	-29.49	-41.86	-37.94	246.
hv/vv (dB)	NaN	-34.97	-57.84	-46.19	1462
hn_jmp (dB)			0.17		
vn_jmp (dB)			0.17		