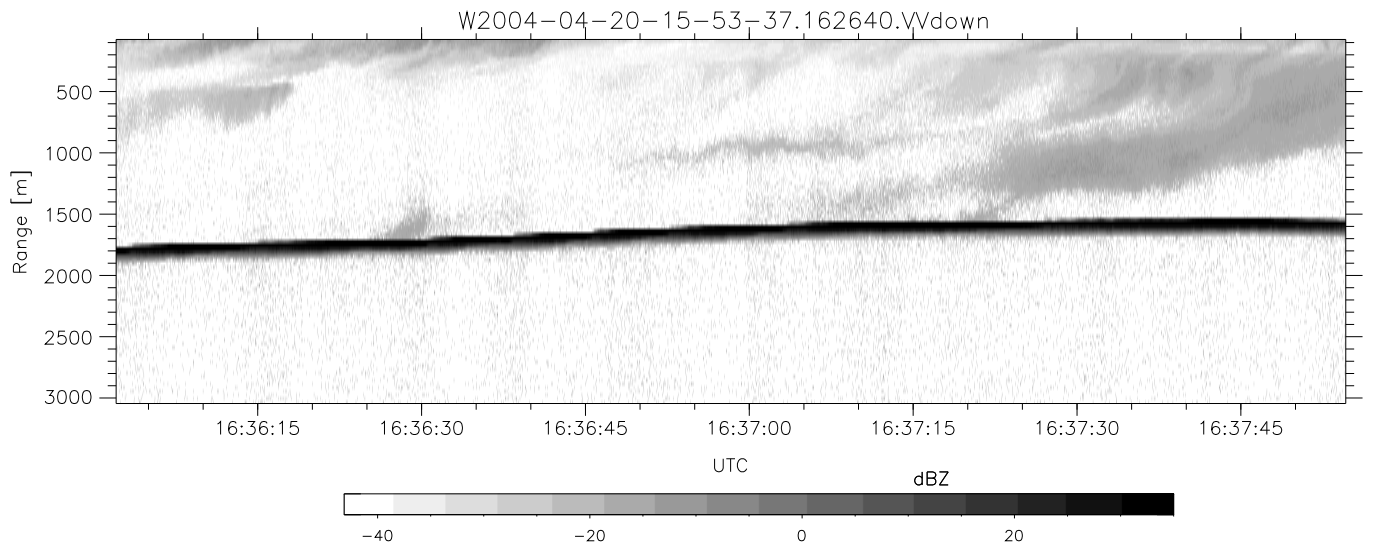
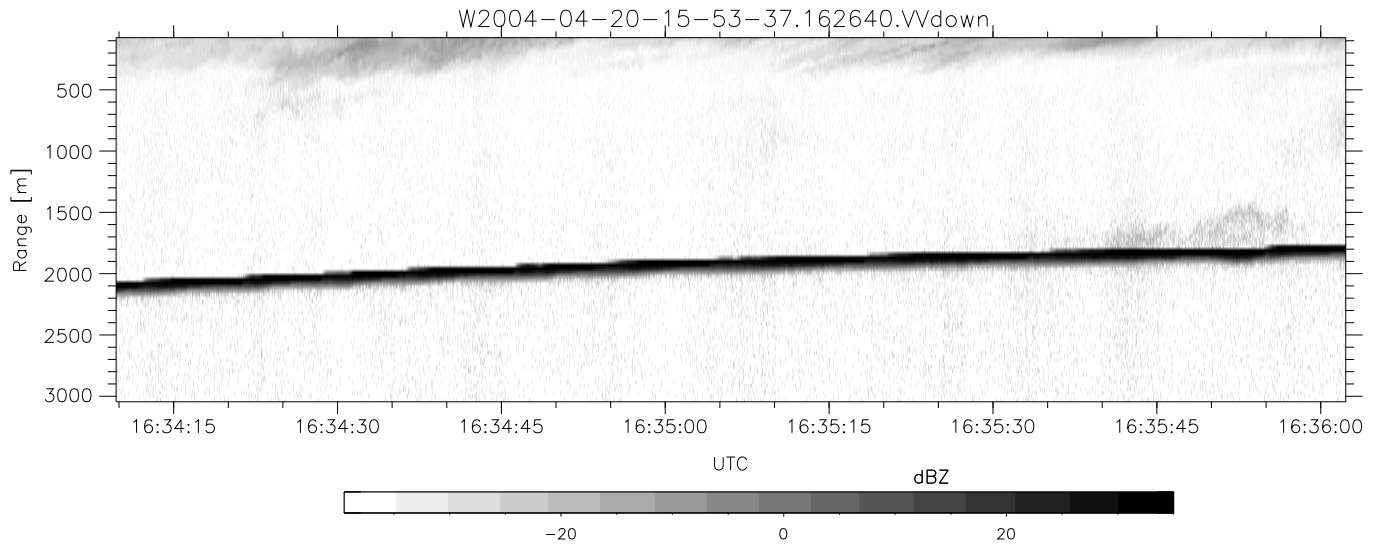
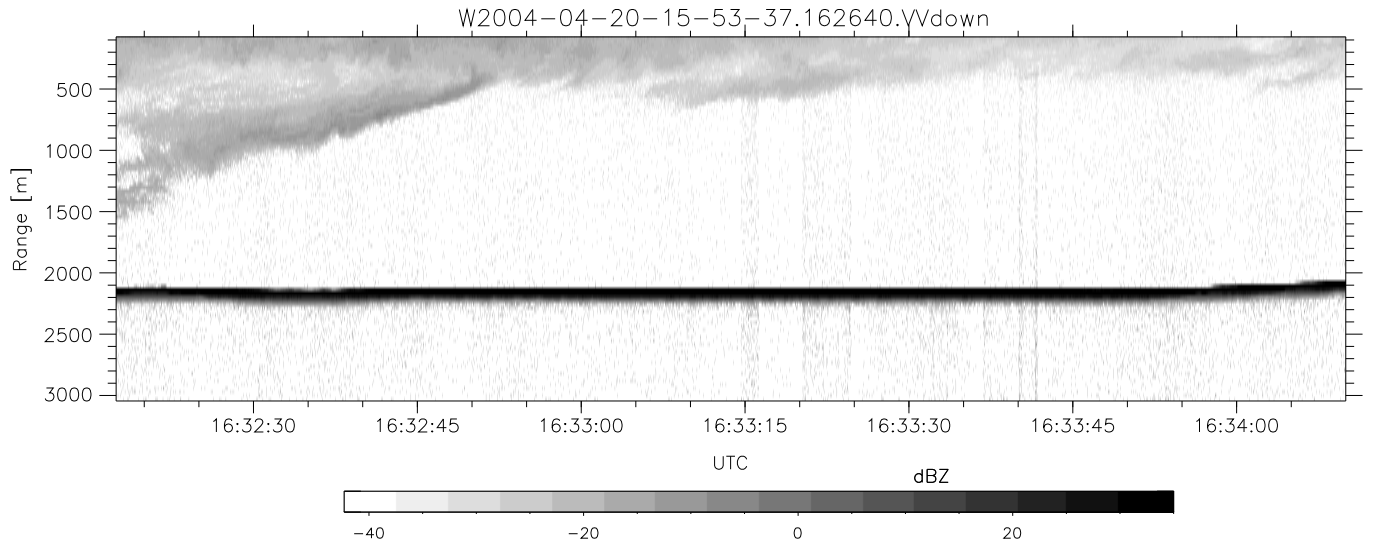


CIFEX 2004 Data (cal/250ns+2.5/100ns-3.5/500ns: 53.0,50.0)

W2004-04-20-15-53-37 - PPMAG4, IRIG:1/0/0
 UTC: 15:53:37.23 to 16:38:56.62, Dur: 2719s
 TimeLngth: 2719.37s, TimeInt: 28ms (35.4pps)
 TimeCor=-13.0s, PPS(min,max,med): 35,36,35
 Timeint/DSPdiff(mn,min,mx):28,28,28/28,28,28
 Prof: 3677 to 100048, NumProf(r/t): 26087/96371
 ProcTime/Recs: 16:26:40-16:38:56/70284-96370
 ADacqtime: 25ms; DRate: 198.4KB/s; Flags: 0, 0, 0
 Pulse: 275ns, IFfilt: 5.0MHz; ppPol: HH HV VV
 TxPol: HHVV, PRF: 20 10 20 10 kHz, NoiseFlg:4,2
 Range: Delay 75m, Spacing 30m, Gates 100
 Ave. Pulses: 84, Rng/Prof Aspect@90m/s: 11.8

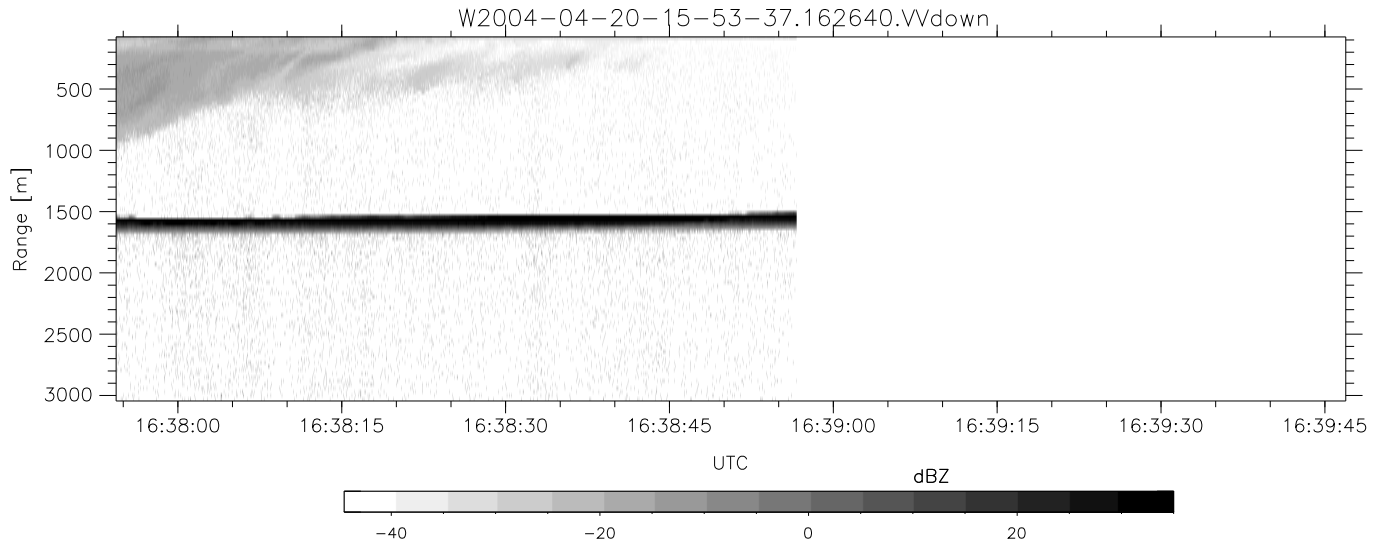
	Min	Max	Mean	Std	Varc%
hhN (dB)	-68.74	-64.35	-66.12	-76.11	10.0
vvN (dB)	-68.09	-64.49	-66.31	-76.19	10.3
hhL (dB)	-22.01	0.39	-3.12	-4.97	65.3
vvL (dB)	-16.61	1.56	-4.54	-6.53	63.3
ppN (m/s)	-12.21	12.73	-0.06	4.11	
ppT (m/s)	-96.43	100.57	-0.51	32.50	
hh/vv (dB)	NaN	86.53	25.82	56.90	1280
vh/hh (dB)	NaN	-28.71	-39.55	-36.40	206.
hv/vv (dB)	NaN	-34.09	-54.19	-45.26	781.
hnjmp (dB)			0.15		
vnjmp (dB)			0.17		



CIFEX 2004 Data (cal/250ns+2.5/100ns-3.5/500ns: 53.0,50.0)

W2004-04-20-15-53-37 - PPMAG4, IRIG:1/0/0
 UTC: 15:53:37.23 to 16:38:56.62, Dur: 2719s
 TimeLngth: 2719.37s, TimeInt: 28ms (35.4pps)
 TimeCor=-13.0s, PPS(min,max,med): 35,36,35
 Timeint/DSPdiff(mn,min,mx):28,28,28/28,28,28
 Prof: 3677 to 100048, NumProf(r/t): 26087/96371
 ProcTime/Recs: 16:26:40-16:38:56/70284-96370
 ADacqtime: 25ms; DRate: 198.4KB/s; Flags: 0, 0, 0
 Pulse: 275ns, IFilt: 5.0MHz; ppPol: HH HV VV
 TxPol: HHVV, PRF: 20 10 20 10 kHz, NoiseFlg:4,2
 Range: Delay 75m, Spacing 30m, Gates 100
 Ave. Pulses: 84, Rng/Prof Aspect@90m/s: 11.8

	Min	Max	Mean	Std	Varc%
hhN (dB)	-68.74	-64.35	-66.12	-76.11	10.0
vvN (dB)	-68.09	-64.49	-66.31	-76.19	10.3
hhL (dB)	-22.01	0.39	-3.12	-4.97	65.3
vvL (dB)	-16.61	1.56	-4.54	-6.53	63.3
ppN (m/s)	-12.21	12.73	-0.06	4.11	
ppT (m/s)	-96.43	100.57	-0.51	32.50	
hh/vv (dB)	NaN	86.53	25.82	56.90	1280
vh/hh (dB)	NaN	-28.71	-39.55	-36.40	206.
hv/vv (dB)	NaN	-34.09	-54.19	-45.26	781.
hnjmp (dB)			0.15		
vnjmp (dB)			0.17		



CIFEX 2004 Data (cal/250ns+2.5/100ns-3.5/500ns: 53.0,50.0)

W2004-04-20-15-53-37 - PPMAG4, IRIG:1/0/0
 UTC: 15:53:37.23 to 16:38:56.62, Dur: 2719s
 TimeLngth: 2719.37s, TimeInt: 28ms (35.4pps)
 TimeCor=-13.0s, PPS(min,max,med): 35,36,35
 Timeint/DSPdiff(mn,min,mx):28,28,28/28,28,28
 Prof: 3677 to 100048, NumProf(r/t): 26087/96371
 ProcTime/Recs: 16:26:40-16:38:56/70284-96370
 ADacqtime: 25ms; DRate: 198.4KB/s; Flags: 0, 0, 0
 Pulse: 275ns, IFfilt: 5.0MHz; ppPol: HH HV VV
 TxPol: HHVV, PRF: 20 10 20 10 kHz, NoiseFlg:4,2
 Range: Delay 75m, Spacing 30m, Gates 100
 Ave. Pulses: 84, Rng/Prof Aspect@90m/s: 11.8

	Min	Max	Mean	Std	Varc%
hhN(dB)	-68.74	-64.35	-66.12	-76.11	10.0
vvN(dB)	-68.09	-64.49	-66.31	-76.19	10.3
hhL(dB)	-22.01	0.39	-3.12	-4.97	65.3
vvL(dB)	-16.61	1.56	-4.54	-6.53	63.3
ppN(m/s)	-12.21	12.73	-0.06	4.11	
ppT(m/s)	-96.43	100.57	-0.51	32.50	
hh/vv(dB)	NaN	86.53	25.82	56.90	1280
vh/hh(dB)	NaN	-28.71	-39.55	-36.40	206.
hv/vv(dB)	NaN	-34.09	-54.19	-45.26	781.
hnjmp(dB)			0.15		
vnjmp(dB)			0.17		