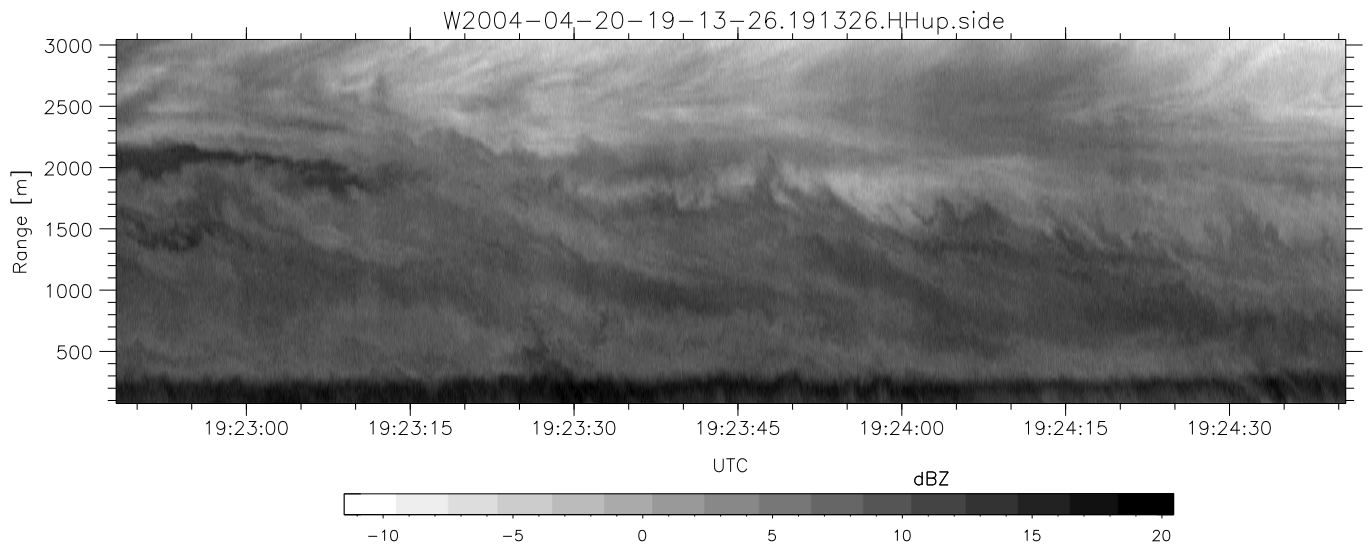
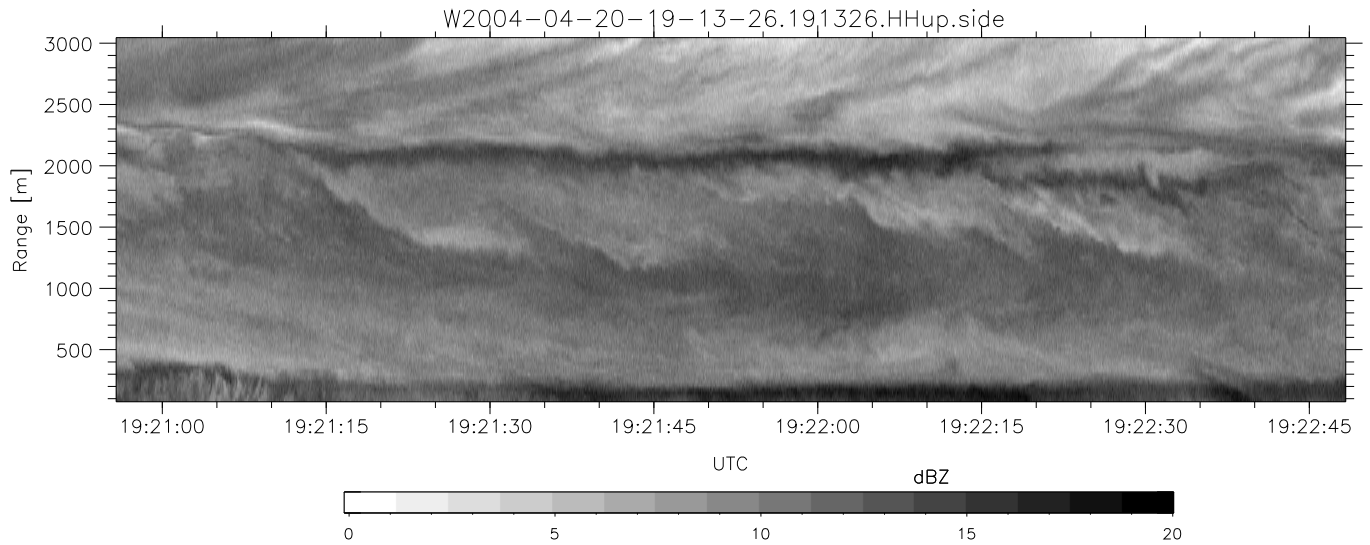
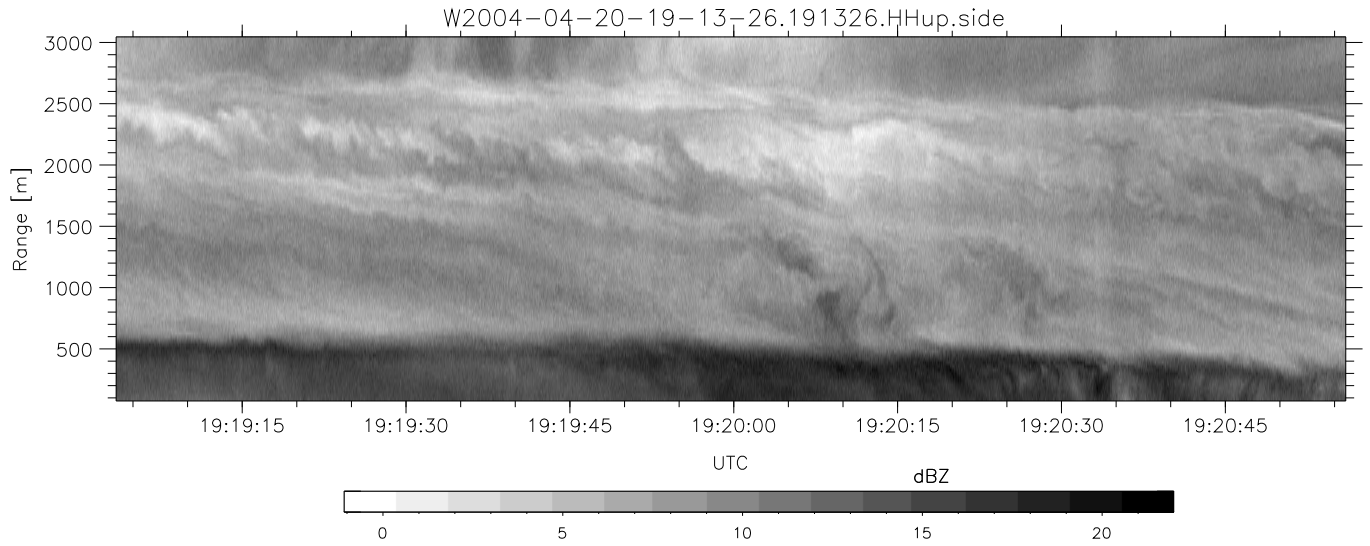


CIFEX 2004 Data (cal/250ns+2.5/100ns-3.5/500ns: 53.0,50.0)

W2004-04-20-19-13-26 - PPMAG4, IRIG:1/0/2  
 UTC: 19:13:26.57 to 19:56:14.79, Dur: 2568s  
 TimeLngth: 2568.21s, TimeInt: 28ms (35.4pps)  
 TimeCor=-13.0s, PPS(min,max,med): 35,36,35  
 Timeint/DSPdiff(mn,min,mx):28,28,29/28,28,29  
 Prof: 309 to 91323, NumProf(r/t): 35142/91014  
 ProcTime/Recs: 19:13:26-19:29:58/0-35141  
 ADacqtime: 25ms; DRate: 198.4KB/s; Flags: 0, 0, 0  
 Pulse: 275ns, IFfilt: 5.0MHz; ppPol: HH HV VV  
 TxPol: HHVV, PRF: 20 10 20 10 kHz, Noiseflg:1,3  
 Range: Delay 75m, Spacing 30m, Gates 100  
 Ave. Pulses: 84, Rng/Prof Aspect@90m/s: 11.8

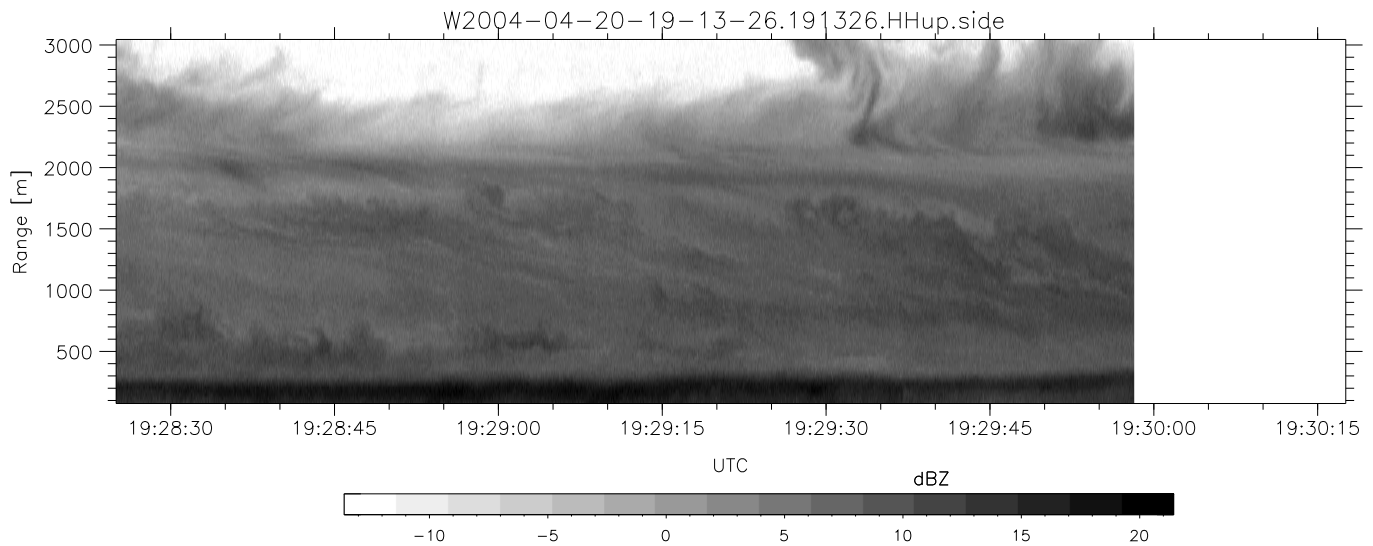
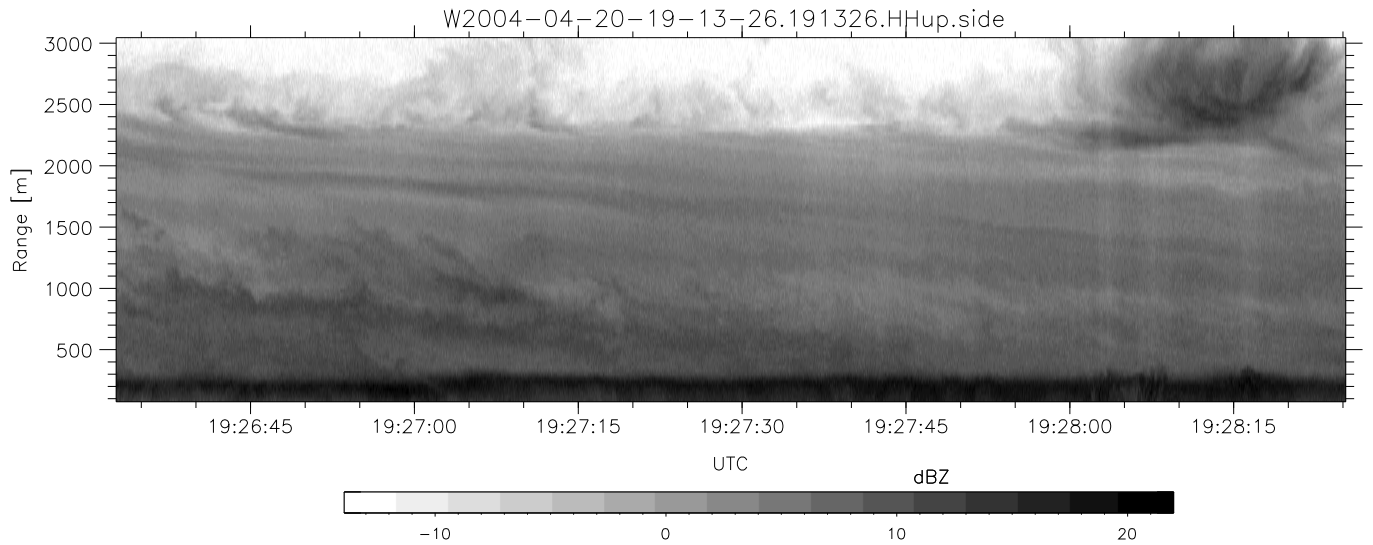
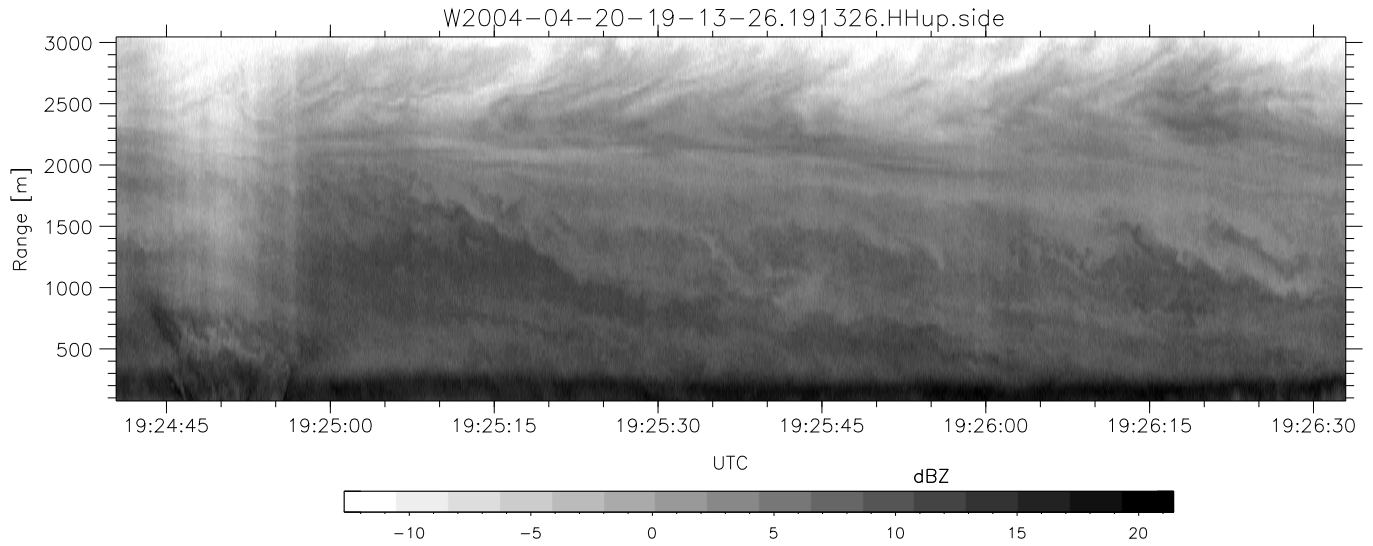
	Min	Max	Mean	Std	Varc%
hhN(dB)	-67.28	-63.83	-65.49	-75.41	10.2
vvN(dB)	-67.32	-63.93	-65.60	-75.59	10.0
hhL(dB)	-9.85	2.43	-0.98	-3.05	62.1
vvL(dB)	1.91	6.00	5.31	-1.90	19.0
ppN(m/s)	-12.70	12.69	-0.02	4.16	
ppT(m/s)	-100.3	100.29	-0.12	32.87	
hh/vv(dB)	NaN	77.97	20.24	50.84	1148
vh/hh(dB)	NaN	-1.80	-29.87	-19.36	1126
hv/vv(dB)	NaN	-31.82	-51.16	-43.96	524.
hnjmp(dB)			0.16		
vnjmp(dB)			0.17		



CIFEX 2004 Data (cal/250ns+2.5/100ns-3.5/500ns: 53.0,50.0)

W2004-04-20-19-13-26 - PPMAG4, IRIG:1/0/2  
 UTC: 19:13:26.57 to 19:56:14.79, Dur: 2568s  
 TimeLngth: 2568.21s, TimeInt: 28ms (35.4pps)  
 TimeCor=-13.0s, PPS(min,max,med): 35,36,35  
 Timeint/DSPdiff(mn,min,mx):28,28,29/28,28,29  
 Prof: 309 to 91323, NumProf(r/t): 35142/91014  
 ProcTime/Recs: 19:13:26-19:29:58/0-35141  
 ADacqtime: 25ms; DRate: 198.4KB/s; Flags: 0, 0, 0  
 Pulse: 275ns, IFilt: 5.0MHz; ppPol: HH HV VV  
 TxPol: HHVV, PRF: 20 10 20 10 kHz, NoiseFlg:1,3  
 Range: Delay 75m, Spacing 30m, Gates 100  
 Ave. Pulses: 84, Rng/Prof Aspect@90m/s: 11.8

	Min	Max	Mean	Std	Varc%
hhN (dB)	-67.28	-63.83	-65.49	-75.41	10.2
vvN (dB)	-67.32	-63.93	-65.60	-75.59	10.0
hhL (dB)	-9.85	2.43	-0.98	-3.05	62.1
vvL (dB)	1.91	6.00	5.31	-1.90	19.0
ppN (m/s)	-12.70	12.69	-0.02	4.16	
ppT (m/s)	-100.3	100.29	-0.12	32.87	
hh/vv (dB)	NaN	77.97	20.24	50.84	1148
vh/hh (dB)	NaN	-1.80	-29.87	-19.36	1126
hv/vv (dB)	NaN	-31.82	-51.16	-43.96	524.
hnjmp (dB)			0.16		
vnjmp (dB)			0.17		



CIFEX 2004 Data (cal/250ns+2.5/100ns-3.5/500ns: 53.0,50.0)

W2004-04-20-19-13-26 - PPMAG4, IRIG:1/0/2	Min	Max	Mean	Std	Varc%	
UTC: 19:13:26.57 to 19:56:14.79, Dur: 2568s	hhN (dB)	-67.28	-63.83	-65.49	-75.41	10.2
TimeLngth: 2568.21s, TimeInt: 28ms (35.4pps)	vvN (dB)	-67.32	-63.93	-65.60	-75.59	10.0
TimeCor=-13.0s, PPS(min,max,med): 35,36,35	hhL (dB)	-9.85	2.43	-0.98	-3.05	62.1
Timeint/DSPdiff(mn,min,mx):28,28,29/28,28,29	vvL (dB)	1.91	6.00	5.31	-1.90	19.0
Prof: 309 to 91323, NumProf(r/t): 35142/91014	ppN (m/s)	-12.70	12.69	-0.02	4.16	
ProcTime/Recs: 19:13:26-19:29:58/0-35141	ppT (m/s)	-100.3	100.29	-0.12	32.87	
ADacqtime: 25ms; DRate: 198.4KB/s; Flags: 0, 0, 0	hh/vv (dB)	NaN	77.97	20.24	50.84	1148
Pulse: 275ns, IFilt: 5.0MHz; ppPol: HH HV VV	vh/hh (dB)	NaN	-1.80	-29.87	-19.36	1126
TxPol: HHVV, PRF: 20 10 20 10 kHz, NoiseFlg:1,3	hv/vv (dB)	NaN	-31.82	-51.16	-43.96	524.
Range: Delay 75m, Spacing 30m, Gates 100	hn_jmp (dB)			0.16		
Ave. Pulses: 84, Rng/Prof Aspect@90m/s: 11.8	vn_jmp (dB)			0.17		