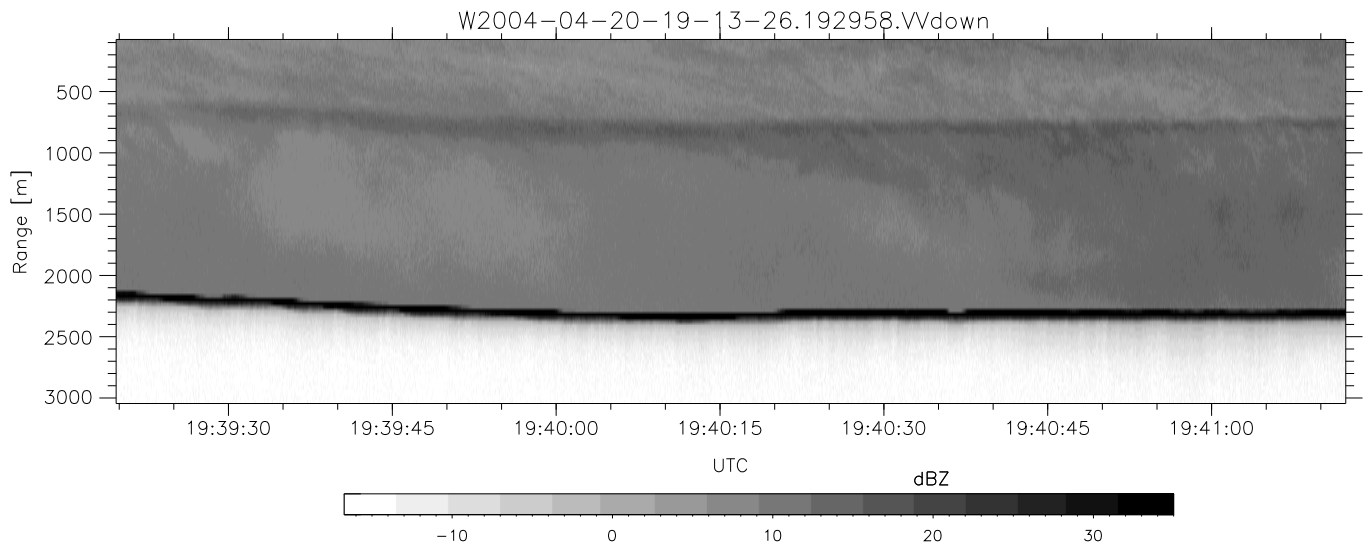
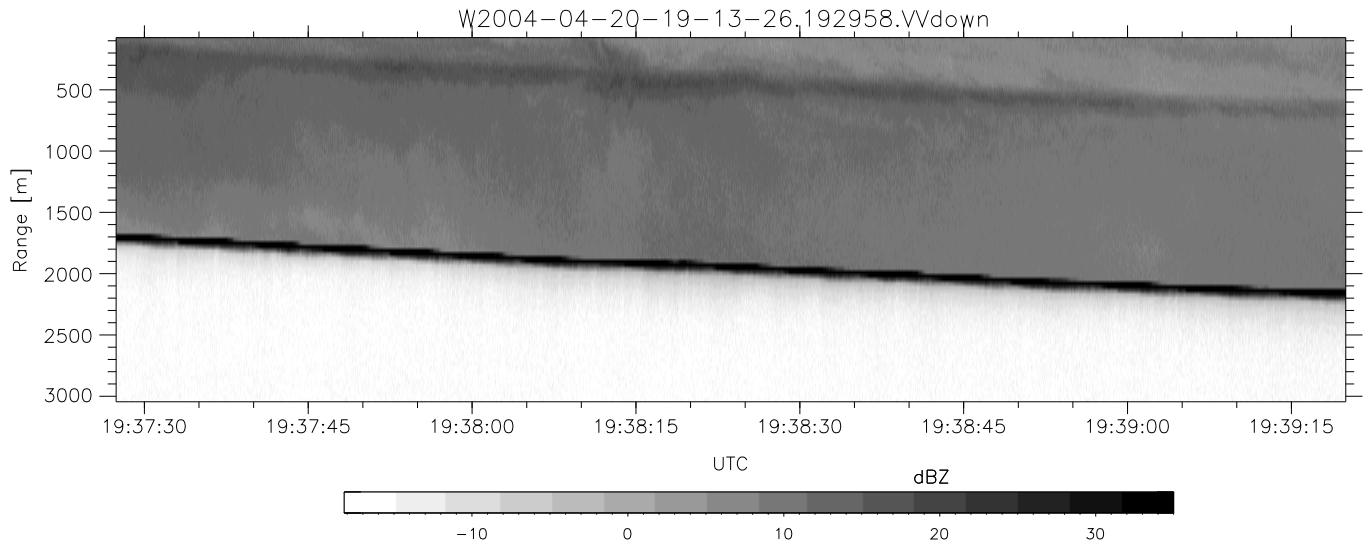
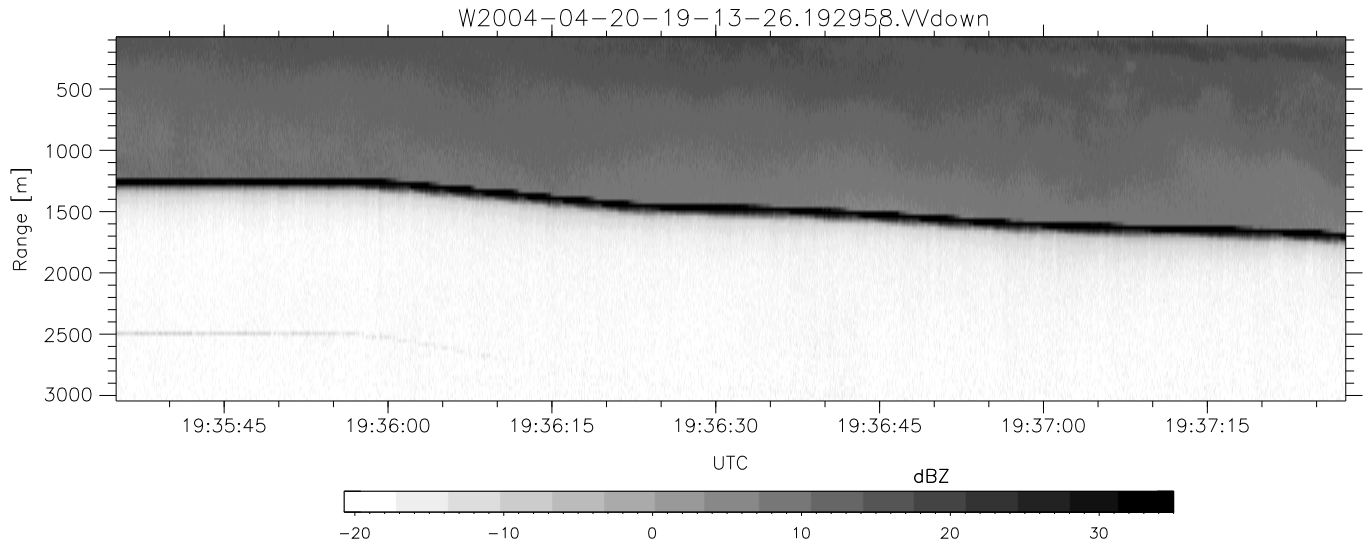


CIFEX 2004 Data (cal/250ns+2.5/100ns-3.5/500ns: 53.0,50.0)

W2004-04-20-19-13-26 - PPMAG4, IRIG:1/0/2  
 UTC: 19:13:26.57 to 19:56:14.79, Dur: 2568s  
 TimeLngth: 2568.29s, TimeInt: 28ms (35.4pps)  
 TimeCor=-13.0s, PPS(min,max,med): 35,36,35  
 Timeint/DSPdiff(mn,min,mx):28,28,30/28,28,30  
 Prof: 309 to 91323, NumProf(r/t): 35142/91014  
 ProcTime/Recs: 19:29:58-19:46:29/35142-70283  
 ADacqtime: 25ms; DRate: 198.4KB/s; Flags: 0, 0, 0  
 Pulse: 275ns, IFfilt: 5.0MHz; ppPol: HH HV VV  
 TxPol: HHVV, PRF: 20 10 20 10 kHz, Noiseflg:4,2  
 Range: Delay 75m, Spacing 30m, Gates 100  
 Ave. Pulses: 84, Rng/Prof Aspect@90m/s: 11.8

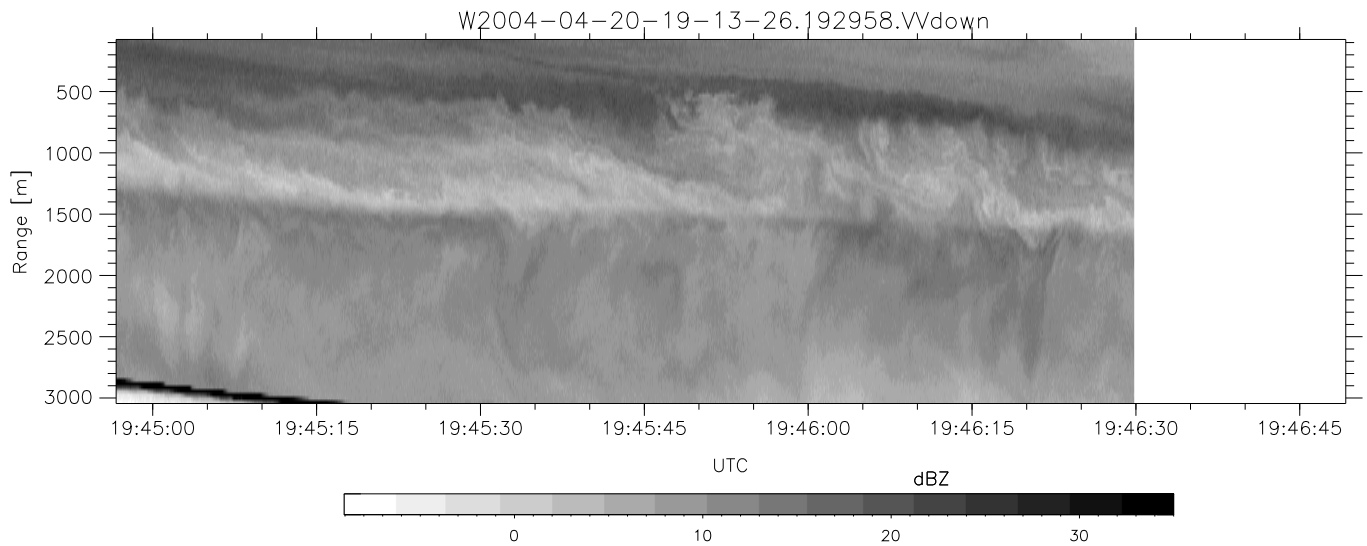
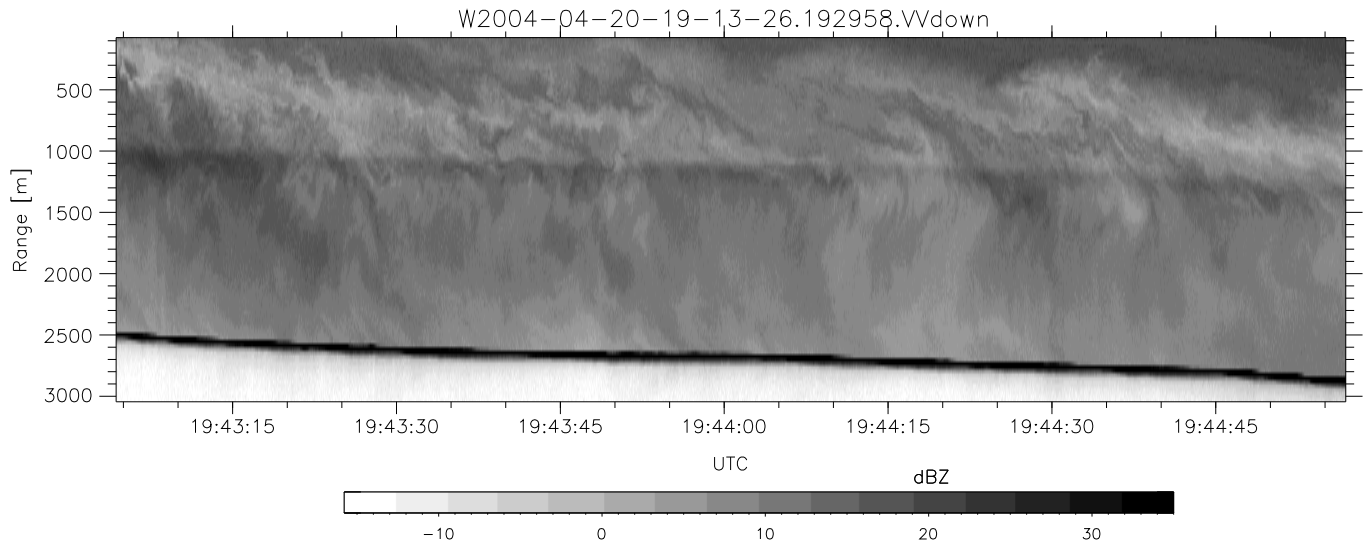
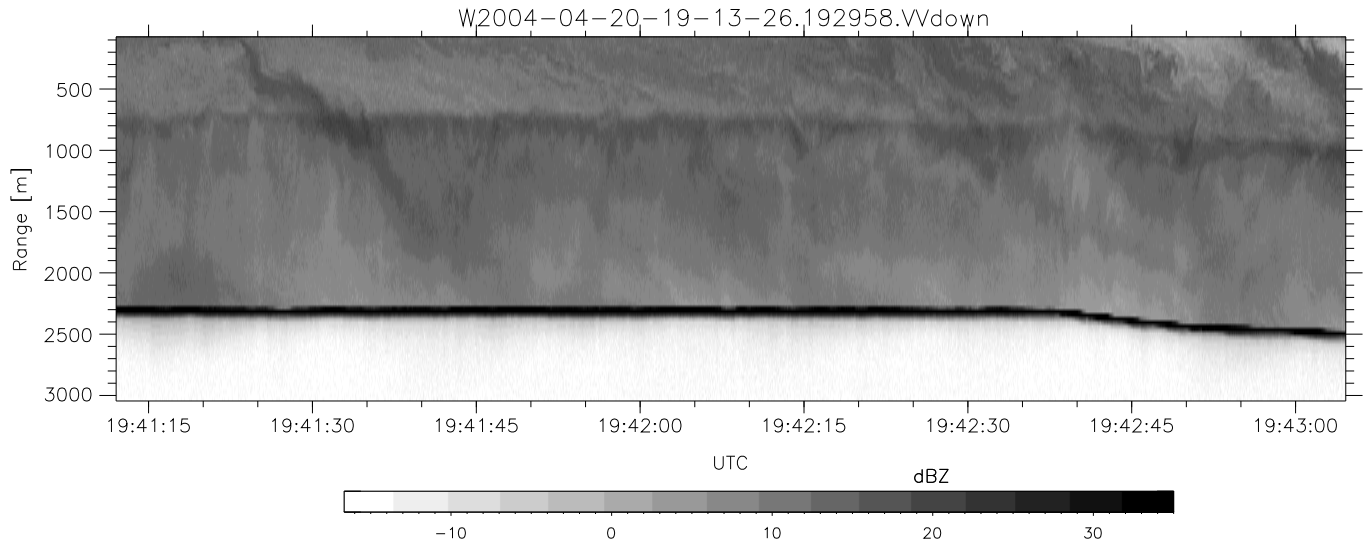
	Min	Max	Mean	Std	Varc%
hhN (dB)	-67.69	-64.19	-65.76	-75.75	10.0
vvN (dB)	-67.79	-63.93	-65.76	-75.75	10.0
hhL (dB)	-10.74	2.95	-0.29	-3.95	43.1
vvL (dB)	-13.40	6.00	4.30	0.71	43.8
ppN (m/s)	-12.82	12.53	-0.03	4.15	
ppT (m/s)	-101.2	99.02	-0.23	32.75	
hh/vv (dB)	NaN	Inf	Inf	-NaN	-NaN
vh/hh (dB)	NaN	-8.07	-40.25	-29.36	1228
hv/vv (dB)	NaN	-32.75	-48.88	-43.45	348.
hnjmp (dB)			0.17		
vnjmp (dB)			0.17		



CIFEX 2004 Data (cal/250ns+2.5/100ns-3.5/500ns: 53.0,50.0)

W2004-04-20-19-13-26 - PPMAG4, IRIG:1/0/2  
 UTC: 19:13:26.57 to 19:56:14.79, Dur: 2568s  
 TimeLngth: 2568.29s, TimeInt: 28ms (35.4pps)  
 TimeCor=-13.0s, PPS(min,max,med): 35,36,35  
 Timeint/DSPdiff(mn,min,mx):28,28,30/28,28,30  
 Prof: 309 to 91323, NumProf(r/t): 35142/91014  
 ProcTime/Recs: 19:29:58-19:46:29/35142-70283  
 ADacqtime: 25ms; DRate: 198.4KB/s; Flags: 0, 0, 0  
 Pulse: 275ns, IFfilt: 5.0MHz; ppPol: HH HV VV  
 TxPol: HHVV, PRF: 20 10 20 10 kHz, Noiseflg:4,2  
 Range: Delay 75m, Spacing 30m, Gates 100  
 Ave. Pulses: 84, Rng/Prof Aspect@90m/s: 11.8

	Min	Max	Mean	Std	Varc%
hhN (dB)	-67.69	-64.19	-65.76	-75.75	10.0
vvN (dB)	-67.79	-63.93	-65.76	-75.75	10.0
hhL (dB)	-10.74	2.95	-0.29	-3.95	43.1
vvL (dB)	-13.40	6.00	4.30	0.71	43.8
ppN (m/s)	-12.82	12.53	-0.03	4.15	
ppT (m/s)	-101.2	99.02	-0.23	32.75	
hh/vv (dB)	NaN	Inf	Inf	-NaN	-NaN
vh/hh (dB)	NaN	-8.07	-40.25	-29.36	1228
hv/vv (dB)	NaN	-32.75	-48.88	-43.45	348.
hnjmp (dB)			0.17		
vnjmp (dB)			0.17		



CIFEX 2004 Data (cal/250ns+2.5/100ns-3.5/500ns: 53.0,50.0)

W2004-04-20-19-13-26 - PPMAG4, IRIG:1/0/2  
 UTC: 19:13:26.57 to 19:56:14.79, Dur: 2568s  
 TimeLngth: 2568.29s, TimeInt: 28ms (35.4pps)  
 TimeCor=-13.0s, PPS(min,max,med): 35,36,35  
 Timeint/DSPdiff(mn,min,mx):28,28,30/28,28,30  
 Prof: 309 to 91323, NumProf(r/t): 35142/91014  
 ProcTime/Recs: 19:29:58-19:46:29/35142-70283  
 ADacqtime: 25ms; DRate: 198.4KB/s; Flags: 0, 0, 0  
 Pulse: 275ns, IFilt: 5.0MHz; ppPol: HH HV VV  
 TxPol: HHVV, PRF: 20 10 20 10 kHz, Noiseflg:4,2  
 Range: Delay 75m, Spacing 30m, Gates 100  
 Ave. Pulses: 84, Rng/Prof Aspect@90m/s: 11.8

	Min	Max	Mean	Std	Varc%
hhN (dB)	-67.69	-64.19	-65.76	-75.75	10.0
vvN (dB)	-67.79	-63.93	-65.76	-75.75	10.0
hhL (dB)	-10.74	2.95	-0.29	-3.95	43.1
vvL (dB)	-13.40	6.00	4.30	0.71	43.8
ppN (m/s)	-12.82	12.53	-0.03	4.15	
ppT (m/s)	-101.2	99.02	-0.23	32.75	
hh/vv (dB)	NaN	Inf	Inf	-NaN	-NaN
vh/hh (dB)	NaN	-8.07	-40.25	-29.36	1228
hv/vv (dB)	NaN	-32.75	-48.88	-43.45	348.
hnjmp (dB)			0.17		
vnjmp (dB)			0.17		