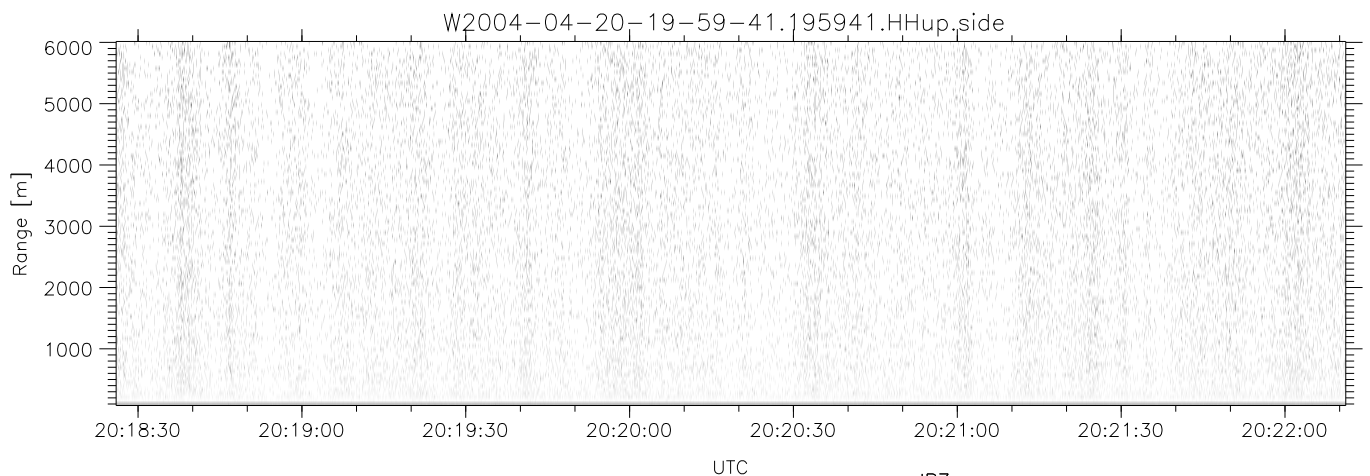
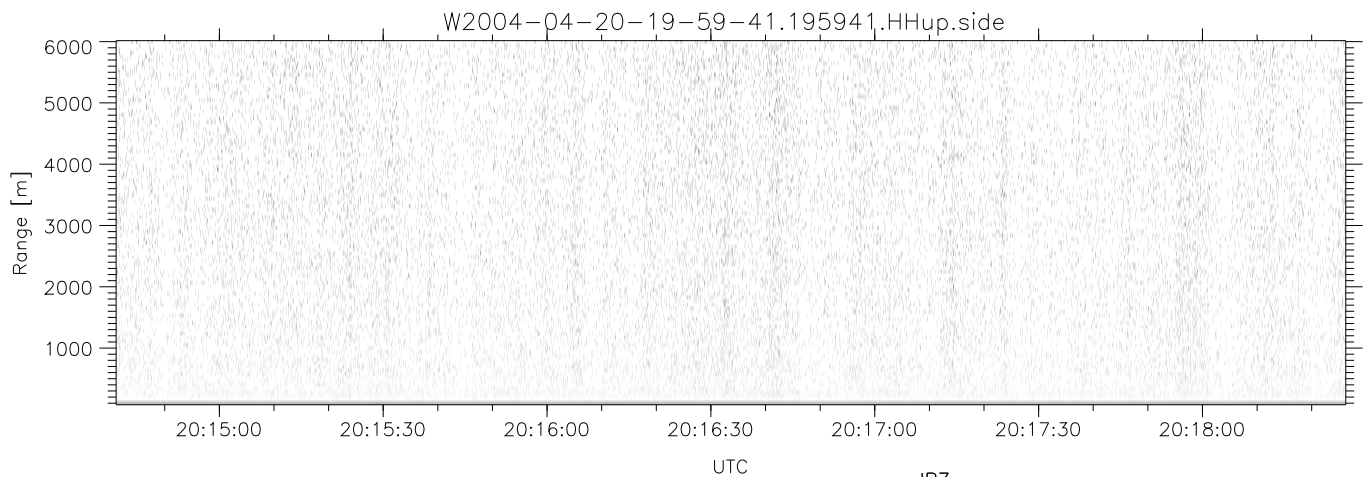
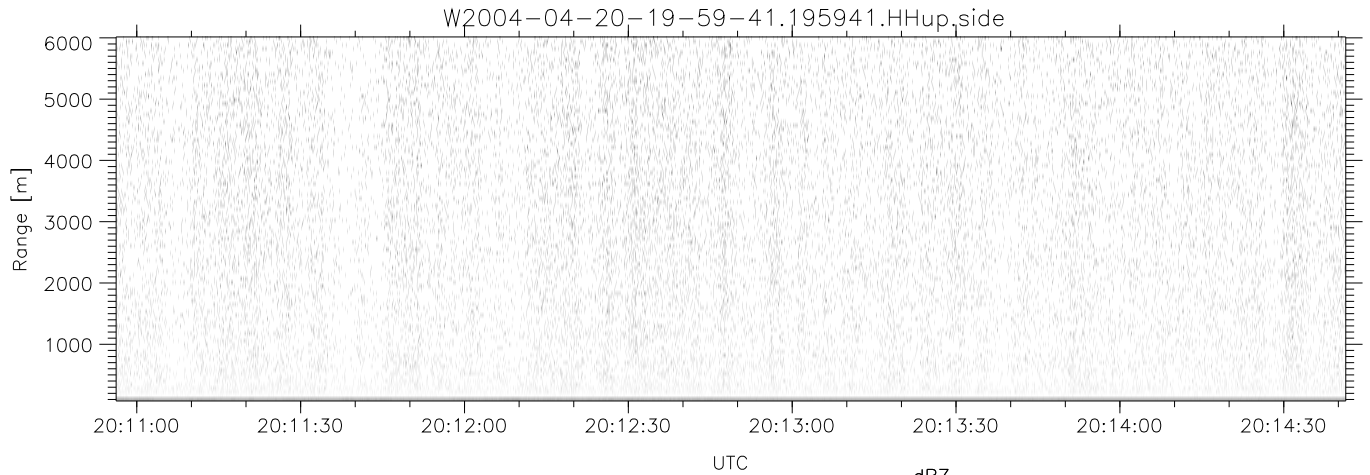


CIFEX 2004 Data (cal/250ns+2.5/100ns-3.5/500ns: 53.0,50.0)

W2004-04-20-19-59-41 - PPMAG4, IRIG:1/0/2  
 UTC: 19:59:41.59 to 20:41:11.85, Dur: 2490s  
 TimeLngth: 2490.29s, TimeInt: 28ms (35.4pps)  
 TimeCor=-13.0s, PPS(min,max,med): 35,36,35  
 Timeint/DSPdiff(mn,min,mx):28,28,41/28,28,28  
 Prof: 320 to 88510, NumProf(r/t): 70285/88190  
 ProcTime/Recs: 19:59:41-20:32:46/0-70284  
 ADacqtime: 25ms; DRate: 198.2KB/s; Flags: 0, 0, 0  
 Pulse: 275ns, IFfilt: 5.0MHz; ppPol: HH HV VV  
 TxPol: HHVV, PRF: 20 10 20 10 kHz, Noiseflg:2,2  
 Range: Delay 75m, Spacing 60m, Gates 100  
 Ave. Pulses: 84, Rng/Prof Aspect@90m/s: 23.6

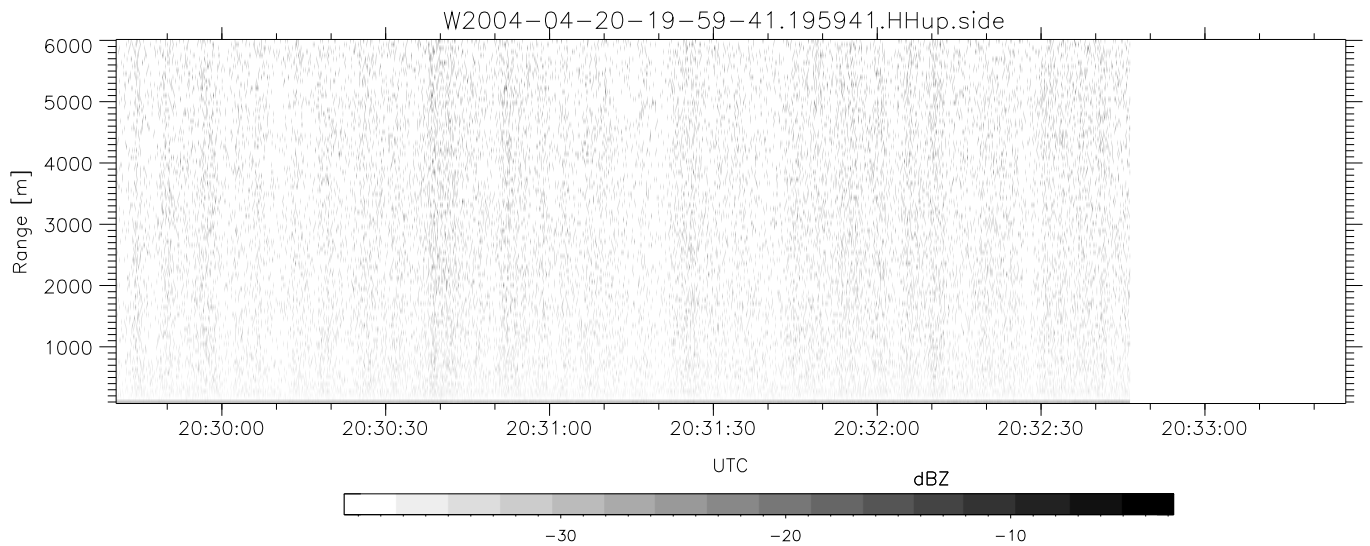
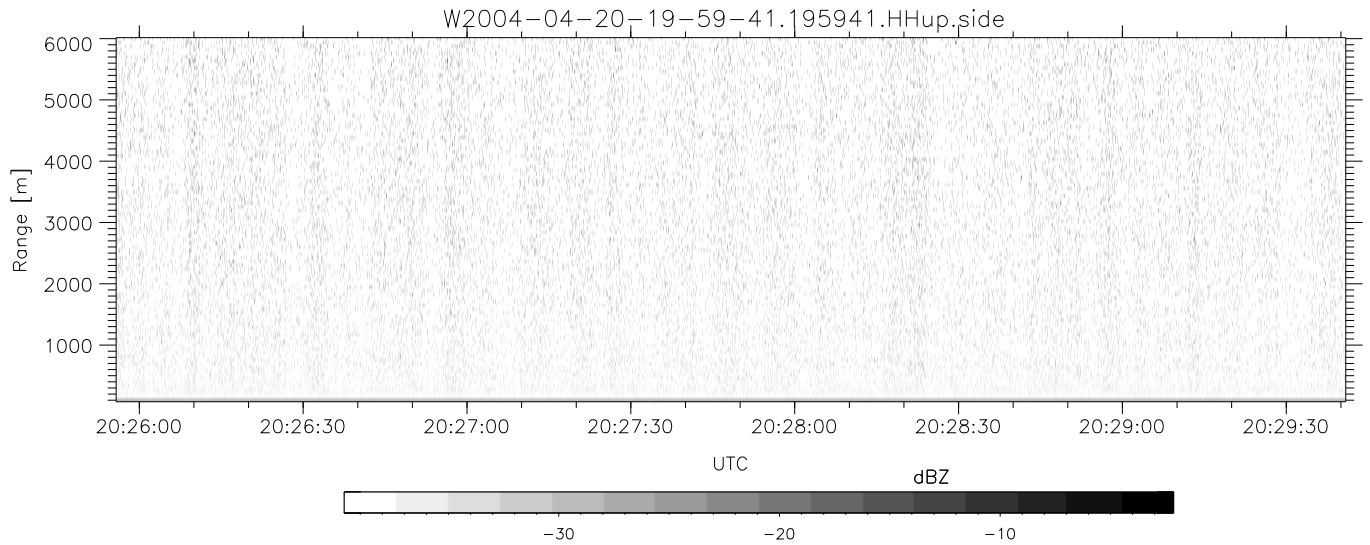
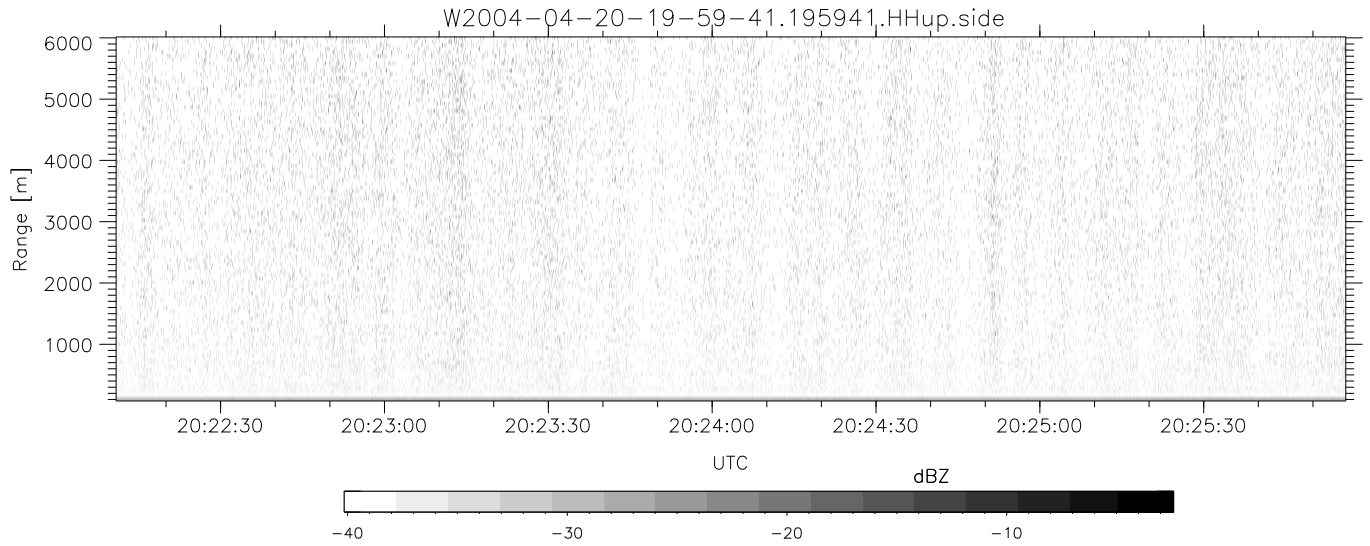
	Min	Max	Mean	Std	Varc%
hhN(dB)	-68.15	-64.09	-66.08	-76.00	10.2
vvN(dB)	-67.94	-62.72	-65.90	-75.78	10.3
hhL(dB)	-5.77	-0.66	-3.15	-10.22	19.6
vvL(dB)	-11.14	4.44	-3.91	-5.68	66.5
ppN(m/s)	-12.57	12.73	-0.02	4.14	
ppT(m/s)	-99.30	100.59	-0.18	32.69	
hh/vv(dB)	-26.12	0.98	-8.67	-6.68	158.
vh/hh(dB)	-99	-99	-99	-99	-99
hv/vv(dB)	NaN	-35.75	NaN	-44.27	-523
hnjmp(dB)			-0.15		
vnjmp(dB)			-0.16		



CIFEX 2004 Data (cal/250ns+2.5/100ns-3.5/500ns: 53.0,50.0)

W2004-04-20-19-59-41 - PPMAG4, IRIG:1/0/2  
 UTC: 19:59:41.59 to 20:41:11.85, Dur: 2490s  
 TimeLngth: 2490.29s, TimeInt: 28ms (35.4pps)  
 TimeCor=-13.0s, PPS(min,max,med): 35,36,35  
 Timeint/DSPdiff(mn,min,mx):28,28,41/28,28,28  
 Prof: 320 to 88510, NumProf(r/t): 70285/88190  
 ProcTime/Recs: 19:59:41-20:32:46/0-70284  
 ADacqtime: 25ms; DRate: 198.2KB/s; Flags: 0, 0, 0  
 Pulse: 275ns, IFilt: 5.0MHz; ppPol: HH HV VV  
 TxPol: HHVV, PRF: 20 10 20 10 kHz, NoiseFlg:2,2  
 Range: Delay 75m, Spacing 60m, Gates 100  
 Ave. Pulses: 84, Rng/Prof Aspect@90m/s: 23.6

	Min	Max	Mean	Std	Varc%
hhN(dB)	-68.15	-64.09	-66.08	-76.00	10.2
vvN(dB)	-67.94	-62.72	-65.90	-75.78	10.3
hhL(dB)	-5.77	-0.66	-3.15	-10.22	19.6
vvL(dB)	-11.14	4.44	-3.91	-5.68	66.5
ppN(m/s)	-12.57	12.73	-0.02	4.14	
ppT(m/s)	-99.30	100.59	-0.18	32.69	
hh/vv(dB)	-26.12	0.98	-8.67	-6.68	158.
vh/hh(dB)	-99	-99	-99	-99	-99
hv/vv(dB)	NaN	-35.75	NaN	-44.27	-523
hnjmp(dB)			-0.15		
vnjmp(dB)			-0.16		



CIFEX 2004 Data (cal/250ns+2.5/100ns-3.5/500ns: 53.0,50.0)

W2004-04-20-19-59-41 - PPMAG4, IRIG:1/0/2  
 UTC: 19:59:41.59 to 20:41:11.85, Dur: 2490s  
 TimeLngth: 2490.29s, TimeInt: 28ms (35.4pps)  
 TimeCor=-13.0s, PPS(min,max,med): 35,36,35  
 Timeint/DSPdiff(mn,min,mx):28,28,41/28,28,28  
 Prof: 320 to 88510, NumProf(r/t): 70285/88190  
 ProcTime/Recs: 19:59:41-20:32:46/0-70284  
 ADacqtime: 25ms; DRate: 198.2KB/s; Flags: 0, 0, 0  
 Pulse: 275ns, IFilt: 5.0MHz; ppPol: HH HV VV  
 TxPol: HHVV, PRF: 20 10 20 10 kHz, NoiseFlg:2,2  
 Range: Delay 75m, Spacing 60m, Gates 100  
 Ave. Pulses: 84, Rng/Prof Aspect@90m/s: 23.6

	Min	Max	Mean	Std	Varc%
hhN (dB)	-68.15	-64.09	-66.08	-76.00	10.2
vvN (dB)	-67.94	-62.72	-65.90	-75.78	10.3
hhL (dB)	-5.77	-0.66	-3.15	-10.22	19.6
vvL (dB)	-11.14	4.44	-3.91	-5.68	66.5
ppN (m/s)	-12.57	12.73	-0.02	4.14	
ppT (m/s)	-99.30	100.59	-0.18	32.69	
hh/vv (dB)	-26.12	0.98	-8.67	-6.68	158.
vh/hh (dB)	-99	-99	-99	-99	-99
hv/vv (dB)	NaN	-35.75	NaN	-44.27	-523
hnjmp (dB)			-0.15		
vnjmp (dB)			-0.16		